

GOLD TREE RESOURCES LTD.

Management's Discussion and Analysis

For the years ended October 31, 2022 and 2021

(Expressed in Canadian Dollars)

**GOLD TREE RESOURCES LTD.
MANAGEMENT DISCUSSION & ANALYSIS
FOR THE YEARS ENDED OCTOBER 31, 2022 AND 2021**

This management's discussion and analysis provides an analysis of our financial situation which will enable the reader to evaluate important variations in our financial situation for the year ended October 31, 2022, compared to the year ended October 31, 2021. This report prepared as at February 28, 2023 intends to complement and supplement our financial statements (the "financial statements") as at October 31, 2022 and should be read in conjunction with the financial statements and the accompanying notes.

Our financial statements and the management's discussion and analysis are intended to provide a reasonable base for the investor to evaluate our financial situation.

Our financial statements have been prepared using accounting policies consistent with International Financial Reporting Standards ("IFRS"). All dollar amounts contained in this MD&A are expressed in Canadian dollars, unless otherwise specified.

Where we say "we", "us", "our", the "Company" or "Gold Tree", we mean Gold Tree Resources Ltd. and/or its subsidiaries, as it may apply.

OVERVIEW AND DESCRIPTION OF BUSINESS

Gold Tree Resources Ltd. (the "Company") was incorporated under the Business Corporations Act of British Columbia on June 21, 2019. The Company is in the business of exploring resource properties. The Company's resource properties are located in British Columbia, Canada and Nevada, USA. The Company's head office, principal address and records of office is 21 - 2986 Coast Meridian Road, Port Coquitlam, BC, V3B 3M8. On March 28, 2022, the Company was approved for its listing on the Canadian Securities Exchange ("CSE") under the stock symbol "GTX".

On September 10, 2019, the Company entered into an Option Agreement (the "Option Agreement") with Divitiae Resources Ltd. ("Divitiae") for the option to acquire the 100% legal and beneficial interest in certain mining claims situated in the Quesnel Terrane in north central British Columbia, referred to as Skygold Project, or the "Property".

On July 7, 2022, the Company acquired, through the purchase of 1314836 BC Ltd. ("1314836"), the McDermitt Lithium Property (the "McDermitt Property") located in Nevada, USA.

CORPORATE DEVELOPMENTS AND SIGNIFICANT TRANSACTIONS AND FACTORS AFFECTING RESULTS OF OPERATIONS

Acquisition – 1314836 BC LTD.

On July 7, 2022, the Company acquired, through the purchase of 1314836, the McDermitt Property located in Nevada, USA.

Under the terms of the agreement, the Company issued 3,000,000 common shares with a fair value of \$0.0255 per share to the shareholders of 1314836.

This acquisition did not meet the definition of a business under IFRS 3; therefore the acquisition of 1314836 was treated as an acquisition of assets. The fair value of the assets acquired as at the date of acquisition were as follows:

Consideration	
Fair value of 3,000,000 common shares issued	\$ 765,000
<hr/>	
Net assets acquired	
Exploration and evaluation assets	\$ 765,000

**GOLD TREE RESOURCES LTD.
MANAGEMENT DISCUSSION & ANALYSIS
FOR THE YEARS ENDED OCTOBER 31, 2022 AND 2021**

CORPORATE DEVELOPMENTS AND SIGNIFICANT TRANSACTIONS AND FACTORS AFFECTING RESULTS OF OPERATIONS (CONTINUED)

The Company sees the acquisition of 1314836 as a strategic acquisition of a key North American property located within one of the most sought-after lithium basins in North America, which already hosts two of the largest lithium deposits in the USA. The Company sees the potential to host a large-scale and long-life source of lithium at this site and is located within favourable mining jurisdictions with significant domestic demand.

Skygold Property

On September 10, 2019 (the “Effective Date”), the Company entered into the Option Agreement, as amended September 9, 2020 and September 9, 2021 with Divitiae, a related party to the Company, for the option to acquire the 100% legal and beneficial interest in the Property, subject to 1.5% Net Smelter Return.

In order to maintain the Option Agreement in good standing and earn a 100% right, title and undivided interest in and to the Property, the Company will pay certain amounts to the Divitiae, issue common shares and complete minimum work expenditures as follows: make cash payments to and as directed by Divitiae, as follows:

- (a) make cash payments to and as directed by Divitiae, as follows:
 - (i) \$8,000 within six months of the Effective Date (paid);
 - (ii) An additional \$10,000 on or before February 28, 2021 (paid);
 - (iii) an additional \$20,000 on or before February 28, 2022 (paid);
 - (iv) an additional \$40,000 on or before June 30, 2023*;
 - (v) an additional \$100,000 on or before the fourth anniversary of the Effective Date;

*On September 9, 2022, the Company entered an Amendment Agreement where the payment on or before the third anniversary of the effective date was amended to be paid on or before June 30, 2023.

- (b) allot and issue to Divitiae, as fully paid and non-assessable, 2,000,000 common shares, as follows:
 - (i) 100,000 shares on or before February 28, 2021 (issued);
 - (ii) an additional 200,000 shares on or before February 28, 2022 (issued);
 - (iii) an additional 400,000 shares on or before the third anniversary of the Effective Date (issued);
 - (iv) an additional 1,300,000 shares on or before the fourth anniversary of the Effective Date;
- (c) complete minimum work expenditures on the Property as follows:
 - (i) \$20,000 on or before February 28, 2021 (completed);
 - (ii) \$40,000 on or before February 28, 2022 (completed); and
 - (iii) \$60,000 on or before the third anniversary of the Effective Date.

Upon exercise of the option, Divitiae is entitled to receive a royalty equal to 1.5% of the net smelter returns (“NSR”) from the Property. The Company may repurchase 1% of the NSR from Divitiae for \$1,000,000.

On September 19, 2022, the Company announced the results from the initial exploration program on its Skygold Project. Key highlights include:

- Highly anomalous concentration in till heavy mineral concentrate of up to 420.79 g/t (see Table 1) in sample SG-22-Til-04, collected to the northeast of Frost Lake. This result expands the pre-existing anomaly “B” to approximately 1,600 meters by 1,100 meters (See Figure 1). Anomaly “B” is now composed of both pristine and reshaped gold in till anomalies identified by the Company in 2019, including pristine grain samples up to 4.58 g/t gold in sample SGHM-19-20, and 180 pristine grains in sample SGHM-19-19.
- Additional regional scale faulting identified through geological mapping and airborne magnetic data forms a direct correlation with anomaly “B” which also presents a favorable environment for gold deposition.

**GOLD TREE RESOURCES LTD.
MANAGEMENT DISCUSSION & ANALYSIS
FOR THE YEARS ENDED OCTOBER 31, 2022 AND 2021**

**CORPORATE DEVELOPMENTS AND SIGNIFICANT TRANSACTIONS AND FACTORS AFFECTING
RESULTS OF OPERATIONS (CONTINUED)**

Skygold Property (continued)

Figure 1 - Plan view map of till sample locations and associated anomalies:

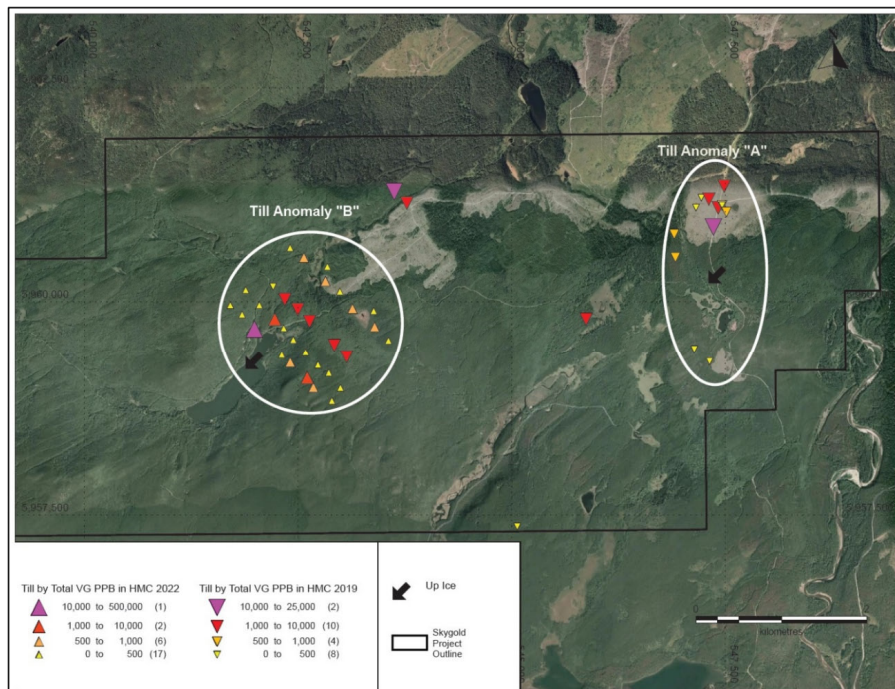


Table 1 – Gold Grain in Till Summary 2022:

Sample Number	Number of Visible Gold Grains				Nonmag HMC Weight (g)*	Calculated PPB Visible Gold in HMC			
	Total	Reshaped	Modified	Pristine		Total	Reshaped	Modified	Pristine
SG-22-TIL-00	51	39	10	2	28.4	785	753	31	1
SG-22-TIL-01	41	39	1	1	35.6	1,028	1,018	<1	10
SG-22-TIL-02	31	26	5	0	35.2	544	531	13	0
SG-22-TIL-03	8	6	2	0	30.0	216	208	9	0
SG-22-TIL-04	22	20	2	0	24.8	420,790	420,775	15	0
SG-22-TIL-05	7	5	2	0	29.2	497	235	262	0
SG-22-TIL-06	39	24	12	3	32.4	574	453	119	3
SG-22-TIL-07	33	18	8	7	32.0	100	72	23	6
SG-22-TIL-08	24	13	4	7	30.0	586	527	22	38
SG-22-TIL-09	13	10	3	0	36.4	256	252	4	0
SG-22-TIL-10	18	16	2	0	35.6	925	914	11	0
SG-22-TIL-11	14	9	3	2	35.2	345	342	3	<1
SG-22-TIL-12	7	6	0	1	26.4	582	579	0	3
SG-22-TIL-13	41	24	11	6	30.4	296	217	45	35
SG-22-TIL-14	30	20	7	3	35.6	387	374	11	2
SG-22-TIL-15	28	18	9	1	33.2	209	195	14	<1
SG-22-TIL-16	5	5	0	0	38.0	66	66	0	0
SG-22-TIL-17	37	28	5	4	34.0	413	352	55	5
SG-22-TIL-18	49	32	12	5	30.8	483	380	95	8
SG-22-TIL-19	29	10	12	7	32.4	441	85	347	9
SG-22-TIL-20	28	9	13	6	34.0	489	342	72	75
SG-22-TIL-21	11	3	5	3	31.6	299	286	10	3
SG-22-TIL-22	5	5	0	0	28.8	404	404	0	0
SG-22-TIL-23	30	22	5	3	32.4	1,808	1,787	14	7
SG-22-TIL-24	5	2	3	0	26.4	144	5	138	0
SG-22-TIL-25	27	19	8	0	33.6	182	170	13	0

**GOLD TREE RESOURCES LTD.
MANAGEMENT DISCUSSION & ANALYSIS
FOR THE YEARS ENDED OCTOBER 31, 2022 AND 2021**

CORPORATE DEVELOPMENTS AND SIGNIFICANT TRANSACTIONS AND FACTORS AFFECTING RESULTS OF OPERATIONS (CONTINUED)

McDermitt Lithium Property

On July 7, 2022, the Company acquired, through the purchase of 1314836, the McDermitt Lithium Property which is comprised of 315 lode claims located in Humboldt County, Nevada, USA.

The Company capitalized the following costs during the year ended October 31, 2022:

	Skygold Property -\$-	McDermitt Lithium Property -\$-	Total -\$-
Acquisition costs			
Balance, October 31, 2020	8,000	-	8,000
Additions	20,000	-	20,000
Balance, October 31, 2021	28,000	-	28,000
Additions	170,000	765,000	935,000
Balance, October 31, 2022	198,000	765,000	963,000
Exploration costs			
Balance, October 31, 2020	84,322	-	84,322
Sampling	831	-	831
Technical Report	1,000	-	1,000
Balance, October 31, 2021	86,153	-	86,153
Geological	17,137	9,488	26,625
Travel	11,221	69,031	80,252
Balance, October 31, 2022	114,511	78,519	193,030
Total costs October 31, 2021	114,153	-	114,153
Total costs October 31, 2022	312,511	843,519	1,156,030

Analysis of the locally derived till material indicates that a previously unidentified felsic intrusion is present a short distance up-ice from (to the southwest of) the sites where the gold-rich till samples (SGHM-19-19 & SGHM-19-20) were collected.

Equity Financing

On September 10, 2022, the Company issued 400,000 common shares with a fair value of \$130,000 pursuant to the terms of the Skygold Option Agreement.

On July 7, 2022, the Company issued 3,000,000 common shares with a fair value of \$765,000 pursuant to the acquisition of 1314836 BC Inc.

On May 5, 2022, the Company issued 100,000 common shares, pursuant to the exercise of warrants for total proceeds of \$10,000.

On February 28, 2022, the Company issued 200,000 common shares with a fair value of \$20,000, pursuant to the terms of the Skygold Option Agreement.

On December 1, 2021, the 355,000 special warrants were converted into common shares of the Company for \$Nil proceeds.

On February 28, 2021, the Company issued 100,000 common shares fair valued at \$10,000, pursuant to the terms of the Skygold Option Agreement.

**GOLD TREE RESOURCES LTD.
MANAGEMENT DISCUSSION & ANALYSIS
FOR THE YEARS ENDED OCTOBER 31, 2022 AND 2021**

CORPORATE DEVELOPMENTS AND SIGNIFICANT TRANSACTIONS AND FACTORS AFFECTING RESULTS OF OPERATIONS (CONTINUED)

Equity Financing (continued)

On June 14, 2021, the Company completed a private placement with the issuance of 115,500 common shares at a price of \$0.10 for gross proceeds of \$11,550, of which \$7,450 was received during the year ended October 31, 2020.

On August 16, 2021, the Company completed a private placement with the issuance of 5,100,000 units at a price of \$0.10 for gross proceeds of \$510,000. Each unit consisted of one common share and one share purchase warrant. Each whole warrant entitles the unitholder to purchase one additional common share at a price of \$0.10 per share at any time within 2 years of the closing.

OVERALL PERFORMANCE

The Company holds the Option Agreement with Divitiae and the mineral claims for the McDermitt Property. The Company has no earnings and therefore finances exploration and development activities by the sale of shares. The key determinants of the Company's operating results are the following:

- (a) success of its exploration and development programs and putting these into production;
- (b) the state of capital markets, which affects the ability of the Company to finance its exploration activities;
- (c) the market price of gold and silver; and
- (d) political and social issues which have affected and could further affect the ability of the Company to conduct exploration and mine development activities on its projects in Canada.

All of the balances set out in this and following sections, including the Summary of quarterly results conform to IFRS standards.

SELECTED ANNUAL INFORMATION

	As at October 31, 2022 (\$)	As at October 31, 2021 (\$)	As at October 31, 2020 (\$)
Total revenues	-	-	-
Net loss	(179,791)	(25,625)	(6,069)
Comprehensive loss	(179,791)	(25,625)	(6,069)
Net loss per share	(0.01)	(0.00)	(0.00)
Total assets	1,515,635	700,741	187,266
Total liabilities	(87,507)	(17,822)	(2,822)

**GOLD TREE RESOURCES LTD.
MANAGEMENT DISCUSSION & ANALYSIS
FOR THE YEARS ENDED OCTOBER 31, 2022 AND 2021**

SUMMARY OF QUARTERLY RESULTS

Quarter Ended	Total Assets (\$)	Revenue (\$)	Comprehensive loss for the period (\$)	Loss per Share (Basic & Diluted) (\$)
July 31, 2020	145,238	-	(270)	(0.00)
October 31, 2020	187,266	-	(301)	(0.00)
January 31, 2021	187,921	-	(175)	(0.00)
April 30, 2021	168,376	-	(8,428)	(0.00)
July 31, 2021	192,462	-	(15)	(0.00)
October 31, 2021	700,741	-	(17,022)	(0.00)
January 31, 2022	691,688	-	(9,053)	(0.00)
April 30, 2022	673,153	-	(59,145)	(0.00)
July 31, 2022	1,392,975	-	(19,568)	(0.00)
October 31, 2022	1,515,635	-	(92,025)	(0.01)

Fluctuations in assets are mostly due to cash from financing activities and the acquisition of exploration and evaluation assets during a specific quarter. The amount and timing of expenses and availability of capital resources vary substantially from quarter to quarter, depending on the availability of funding from investors or collaboration partners.

During the period ended July 31, 2022, total assets increased by \$524,153 as a result of the acquisition of 1314836. The Company's expenditure for the period remains low as the Company focuses its effort to explore its exploration properties.

For the years ended October 31, 2022 and 2021:

The Company recorded a net loss of \$179,971 for the year ended October 31, 2022 compared to a net loss of \$25,625 for the corresponding period in 2021. Some of the significant charges to operations are as follows:

- Professional fees of \$20,550 (2021 - \$25,317) decreased this period as the Company incurred some additional accounting services in the prior year which were recorded as professional fees.
- General administrative and office fees of \$11,186 (2021 - \$208) increased this period due to expenditures including website costs of \$2,020, travel expenses of \$7,373 and bank charges of \$532.
- Accounting fees of \$84,018 (2021 - \$Nil) increased due to audit, financial reporting fees and review fees.
- Legal fees of \$31,371 (2021 - \$10,700) increased due to increased overall activity in the Company in the current period.
- Transfer agent and filing fees of \$32,666 (2021 - \$Nil) as the Company commenced trading on CSE in 2022.

LIQUIDITY AND CAPITAL RESOURCES

The financial statements have been prepared on a going-concern basis, which assumes the realization of assets and liquidation of liabilities in the normal course of business. Continuing operations, as intended, are dependent on management's ability to raise required funding through future equity issuances, its ability to acquire resource property or business interests and develop profitable operations or a combination thereof, which is not assured, given today's volatile and uncertain financial markets. The Company may revise exploration and development programs depending on its working capital position.

As at October 31, 2022, the Company had working capital of \$272,098 (October 31, 2021 - \$568,766) which primarily consisted of cash of \$352,052 (October 31, 2021 - \$586,588). Current liabilities, being accounts payable and accrued liabilities of \$71,406 (October 31, 2021 - \$15,000) and due to related parties of \$16,101 (October 31, 2021 - \$2,822). Refer to the Financial Statements for more information on the use of cash in operating, investing and financing activities for the period ended October 31, 2022.

**GOLD TREE RESOURCES LTD.
MANAGEMENT DISCUSSION & ANALYSIS
FOR THE YEARS ENDED OCTOBER 31, 2022 AND 2021**

LIQUIDITY AND CAPITAL RESOURCES (CONTINUED)

Other than the above-mentioned current liabilities, the Company has no short-term capital spending requirements and future plans and expectations are based on the assumption that the Company will realize its assets and discharge its liabilities in the normal course of business rather than through a process of forced liquidation. There can be no assurance that the Company will be able to obtain adequate financing in the future or if available that such financing will be on acceptable terms. If adequate financing is not available when required, the Company may be required to delay, scale back or eliminate various programs and may be unable to continue in operation. The Company may seek such additional financing through debt or equity offerings. Any equity offering will result in dilution to the ownership interests of the Company's shareholders and may result in dilution to the value of such interests. The Company's future revenues, if any, are expected to be from the mining and sale of mineral products or interests related there to. The economics of developing and producing mineral products are affected by many factors including the cost of operations, variations in the grade of ore mined, and the price of metals.

Depending on the price of metals, the Company may determine that it is impractical to continue commercial production. The price of metals has fluctuated widely in recent years and is affected by many factors beyond the Company's control including changes in international investment patterns and monetary systems, economic growth rates, political developments, the extent of sales or accumulation of reserves by governments and shifts in private supplies of and demands for metals.

The supply of metals consists of a combination of mine production, recycled material, and existing stocks held by governments, producers, financial institutions and consumers. If the market price for metals falls below the Company's full production costs and remains at such levels for any sustained period of time, the Company will experience losses and may decide to discontinue operations or development of other projects or mining at one or more of its properties at that time.

LIQUIDITY AND CAPITAL RESOURCES – CASH FLOW

OPERATING ACTIVITIES:

Cash used in operating activities for period ended was \$117,659 as compared to \$7,075 in the comparative period. Fluctuations in operating activities is attributed to a higher number of expenditures occurring in the current year compared to the prior year.

INVESTING ACTIVITIES:

Cash used in investing activities for the period ended October 31, 2022 was \$126,877 as compared to \$11,831 in the prior period, resulted from an increase in exploration and evaluation expenditures.

FINANCING ACTIVITIES:

Cash provided by financing activities for the period ended October 31, 2022 was \$10,000 as compared to \$514,100 in the prior period. Proceeds for the current period resulted from the exercise of warrants and private placements in the prior period.

TRANSACTIONS WITH RELATED PARTIES

The Directors and Executive Officers of the Company are as follows:

Adrian Smith	Chief Executive Officer and President
James Henning	Chief Financial Officer
Brett Matich	Director
Gerald Kelly	Director
Kostantinos Tsoutsis	Director

**GOLD TREE RESOURCES LTD.
MANAGEMENT DISCUSSION & ANALYSIS
FOR THE YEARS ENDED OCTOBER 31, 2022 AND 2021**

TRANSACTIONS WITH RELATED PARTIES (CONTINUED)

The Company incurred the following related party transactions, with associated persons or corporations, which were undertaken in the normal course of operations and were measured at the exchange amount as follows:

- a) Key management includes directors, executive officers and officers which constitutes the management team. The Company did not pay or accrue compensation in form of consulting fees to companies controlled by directors, executive officers and officers.

Related party balances

As at October 31, 2022, Company had amounts due to related parties of \$16,101 (October 31, 2021 - \$2,822), which was payable to directors and officers of the Company. The amounts are unsecured, non-interest bearing and due on demand. The total amounts due to related parties as at October 31, 2022 is \$16,101 (October 31, 2021 - \$2,822).

Related party transactions

Management fees charged by a company controlled by a director totaled \$4,250 during the year ended October 31, 2022 (October 31, 2022 - \$Nil).

FINANCIAL INSTRUMENTS AND RISKS

The Company's financial instruments consist of cash, subscriptions receivable, and due to related parties. The fair value of these financial instruments approximates their carrying values, unless otherwise noted.

The Company's risk exposures and the impact on the Company's financial instruments are summarized below:

Credit risk

Credit risk arises from the non-performance by counterparties of contractual financial obligations. The Company's exposure to credit risk includes cash. The Company reduces its credit risk by maintaining its bank accounts at large international financial institutions. The maximum exposure to credit risk is equal to the fair value or carrying value of the financial assets. The Company has assessed credit risk as low.

Liquidity risk

Liquidity risk is the risk that the Company will not have sufficient liquidity to meet its financial obligations as they come due. The Company has a planning and budgeting process in place to help determine the funds required to support the Company's normal operating requirements on an ongoing basis. The Company cautions that there are no cash flows from operations. The Company feels that its current cash holdings is adequate to meet its anticipated short-term obligations.

Historically, the Company's sole source of funding has been the issuance of equity securities for cash, primarily through private placements. The Company's access to financing is always uncertain. There can be no assurance of continued access to significant equity funding. As at October 31, 2022, the Company had a cash balance of \$352,052 (October 31, 2021 - \$586,588) to settle current liabilities of \$87,507 (October 31, 2021 - \$17,822).

FINANCIAL INSTRUMENTS AND RISKS (CONTINUED)

Market risk

Market risk is the risk of loss that may arise from changes in market factors such as interest rates, foreign currency and price risk.

a) Interest rate risk

Interest rate risk is the risk that the fair value of future cash flows of a financial instrument will fluctuate because of changes in the market interest rates. The Company has no material exposure at October 31, 2022 to interest rate risk through its financial instruments.

b) Foreign currency risk

Foreign currency risk is the risk that the fair values of future cash flows of a financial instrument will fluctuate because they are denominated in currencies that differ from the respective functional currency. The Company does not have any financial instruments denominated in a foreign currency as at October 31, 2022. Foreign currency risk is assessed as low.

c) Price risk

The Company's exposure to price risk with respect to commodity and equity prices is minimal due to the fact that the Company is still in the exploration stage with no earnings. Equity price risk is defined as the potential adverse impact on the Company's earnings due to movements in individual equity prices or general movements in the level of the stock market. Commodity price risk is defined as the potential adverse impact on earnings and economic value due to commodity price movements and volatilities. The Company intends to closely monitor commodity prices of gold and other precious and base metals, individual equity movements, and the stock market to determine the appropriate course of action to be taken by the Company when warranted.

OTHER INFORMATION

Off Balance Sheet Items

The Company has no off-balance sheet arrangements.

Going Concern

These financial statements have been prepared on a going-concern basis, which assumes the realization of assets and liquidation of liabilities in the normal course of business. Several material uncertainties lend significant doubt on the validity of this assumption. The Company has incurred losses since inception and has no current source of revenue. Continuing operations, as intended, are dependent on management's ability to raise required funding through future equity issuances, its ability to acquire resource property or business interests and develop profitable operations or a combination thereof, which is not assured given the volatile and uncertain financial markets.

These financial statements do not include any adjustments to the recoverability and classification of recorded asset amounts and classification of liabilities that might be necessary should the Company be unable to continue as a going concern. At October 31, 2022, the Company had a deficit of \$211,873 (October 31, 2021 – \$32,082) and a working capital of \$272,098 (October 31, 2021 - \$568,766). There can be no assurance that the Company will be able to continue to raise funds, in which case the Company may be unable to meet its obligations. Should the Company be unable to continue as a going concern, the net realizable values of its assets may be materially less than the amounts recorded on the statements of financial position.

**GOLD TREE RESOURCES LTD.
MANAGEMENT DISCUSSION & ANALYSIS
FOR THE YEARS ENDED OCTOBER 31, 2022 AND 2021**

OTHER INFORMATION (CONTINUED)

Management of capital

The Company's objectives when managing capital are to safeguard the Company's ability to continue as a going concern in order to pursue suitable business opportunities and to maintain a flexible capital structure for its projects for the benefit of its stakeholders. As the Company is in the exploration stage and has not achieved commercial operations from its projects, its principal source of funds is from the issuance of common shares.

In the management of capital, the Company includes the components of shareholders' equity (deficiency). The Company manages the capital structure and makes adjustments to it in light of changes in economic conditions and the risk characteristics of the underlying assets. To maintain or adjust the capital structure, the Company may attempt to issue new shares, enter into joint venture property arrangements, acquire or dispose of assets or adjust the amount of cash and cash equivalents and investments.

In order to facilitate the management of its capital requirements, the Company prepares monthly and annual expenditure budgets that are updated as necessary depending on various factors, including successful capital deployment and general industry conditions. The annual and updated budgets are approved by the Board of Directors. The Company's investment policy is to invest its cash in highly liquid short-term interest-bearing investments with maturities of three months or less from the original date of acquisition, selected with regards to the expected timing of expenditures from continuing operations. The Company is uncertain as to whether its current capital resources will be sufficient to carry its exploration and development plans and operations through its current operating period and, accordingly, management is reviewing the timing and scope of current exploration plans and is also pursuing other financing alternatives to fund the Company's operations.

The Company is not currently subject to externally imposed capital requirements. There are no changes in the Company's approach to capital management.

OTHER INFORMATION (CONTINUED)

Outstanding Share Data

The table below presents the Company's common share data as of the date of this MD&A.

	Number
Common Shares, issued and outstanding	17,020,501
Stock options convertible into common shares	Nil
Warrants	5,100,000

RISKS AND UNCERTAINTIES

Early Stage – Need for Additional Funds

The Company has no history of profitable operations and its present business is at an early stage. As such, the Company is subject to many risks common to such enterprises, including undercapitalization, cash shortages and limitations with respect to personnel, financial and other resources and the lack of revenues. There is no assurance that the Company will be successful in achieving a return on shareholders' investments and the likelihood of success must be considered in light of its early stage of operations. The Company has no source of operating cash flow and no assurance that additional funding will be available to it for further exploration and development of its projects when required. Although the Company has been successful in the past in obtaining financing through the sale of equity securities, there can be no assurance that the Company will be able to obtain adequate financing in the future or that the terms of such financing will be favorable, especially in today's volatile and uncertain financial markets. Failure to obtain such additional financing could result in the delay or indefinite postponement of further exploration and development of its properties.

COVID-19

In March 2020, the World Health Organization declared the outbreak of COVID-19 a global pandemic. Government measures to limit the spread of COVID-19, including the closure of non-essential businesses, did not materially disrupt the Company's operations during the period ended October 31, 2022. As at October 31, 2022, we have also not observed any material impairments of our assets or a significant change in the fair value of assets due to the COVID-19 pandemic.

Due to the rapid developments and uncertainty surrounding COVID-19, it is not possible to predict the impact that COVID-19 will have on our business, financial position and operating results in the future. In addition, it is possible that estimates in the Company's financial statements will change in the near term as a result of COVID-19 and the effect of any such changes could be material. The Company is closely monitoring the impact of the pandemic on all aspects of its business.

Exploration and Development

Exploration for minerals is a speculative venture involving substantial risk. There is no certainty that the expenditures made by the Company and/or its subsidiaries will result in discoveries of commercial metal reserves.

Mining and development risks always accompany anticipated rewards, and uncertainties always exist where mineral properties are concerned. Uncertainties include the size, grade and recovery of naturally occurring mineral deposits. Although exploration and development efforts can outline a mineral deposit with a degree of certainty, ultimate grade and tonnages are never fully known until mining has been completed. Metal prices are also a significant factor in the development decision for a mineral property, as a mine may not be economically feasible in a period of depressed prices. Factors beyond the control of the Company may affect the marketability of any minerals discovered.

Pricing is affected by numerous factors such as international economic and political trends, global or regional consumption and demand patterns, and increased production by current producers.

RISKS AND UNCERTAINTIES (CONTINUED)

Operating Hazards and Risks

Mining operations involve many risks, which even a combination of experience, knowledge and careful evaluation may not be able to overcome. In the course of exploration, development and production of mineral properties, certain risks, and in particular, unexpected or unusual geological operating conditions including rock bursts, cave-ins, fires, flooding and earthquakes may occur. Operations in which the Company has a direct or indirect interest will be subject to all the hazards and risks normally incidental to exploration, development and production of metals, any of which could result in damage to or destruction of mines and other producing facilities, damage to life and property, environmental damage and possible legal liability for any or all damage.

Foreign Country and Political Risk

The Company might from time to time pursue mineral properties in unstable political or economic countries. The Company would be subject to certain risks, including currency fluctuations and possible political or economic instability in certain jurisdictions, which may result in the impairment or loss of mineral concessions or other mineral rights. Mineral exploration and mining activities may be affected in varying degrees by political instability and government regulations relating to the mining industry. Any changes in regulations or shifts in political attitudes may also adversely affect the Company's business. Exploration may be affected in varying degrees by government regulations with respect to restrictions on future exploitation and production, price controls, export controls, foreign exchange controls, income taxes, expropriation of property, environmental legislation and mine and/or site safety. The Company does not presently own/pursue foreign exploration projects.

Competition and Agreements with Other Parties

The mining industry is intensely competitive in all its phases. The Company competes with other companies that have greater financial resources and technical capacity. Competition could adversely affect the Company's ability to acquire suitable properties or prospects in the future.

The Company may, in the future, be unable to meet its share of costs incurred under agreements to which it is a party, and it may have its interest in the properties subject to such agreements reduced as a result. Also, if other parties to such agreements do not meet their share of such costs, the Company may not be able to finance the expenditures required to complete recommended programs.

Environmental Regulations, Permits and Licenses

The Company's operations are subject to various laws and regulations governing the protection of the environment, exploration, development, production, taxes, labour standards, occupational health and safety, waste disposal, and other matters. Environmental legislation provides for restrictions and prohibitions on spills, releases or emissions of various substances produced in association with certain mining industry operations, such as seepage from tailings disposal areas, which would result in environmental pollution. A breach of such legislation may result in impositions of fines and penalties. In addition, certain types of operations require the submission and approval of environmental impact assessments. Environmental legislation is evolving in a direction of stricter standards, and enforcement, and higher fines and penalties for non-responsibility for companies including its directors, officers and employees. The cost of compliance with changes in governmental regulations has the potential to reduce the profitability for the Company and its directors, officers and employees. The Company intends to fully comply with all environmental regulations.

RISKS AND UNCERTAINTIES (CONTINUED)

Environmental Regulations, Permits and Licenses (continued)

Failure to comply with applicable laws, regulations, and permitting requirements may result in enforcement actions thereunder, including orders issued by regulatory or judicial authorities causing operations to cease or be curtailed, and may include corrective measures requiring capital expenditures, installation of additional equipment, or remedial actions. Parties engaged in mining operations may be required to compensate those

suffering loss or damage by reason of mining activities and may have civil or criminal fines or penalties imposed for violations of applicable laws or regulations and, in particular, environmental laws.

Amendments to current laws, regulations and permits governing operations and activities of mining companies, or more stringent implementation thereof, could have a material adverse impact on the Company and cause increases in capital expenditures or production costs or reduction in levels of production at producing properties, or requirements abandonment, or delays in development of new mining properties.

Title Risks

Title to exploration and evaluation assets involves certain inherent risks due to the difficulties of determining the validity of certain claims as well as the potential for problems arising from the frequently ambiguous conveyancing history characteristic of many mineral properties. The Company has investigated title to all of its mineral properties and, to the best of its knowledge, title to all of its properties are in good standing.

Price Volatility of Public Stock

In recent years, securities markets have experienced extremes in price and volume volatility. The market price of securities of many early-stage companies, among others, have experienced fluctuations in price which may not necessarily be related to the operating performance, underlying asset values or prospects of such companies. It may be anticipated that any market for the Company's shares will be subject to market trends generally and the value of the Company's shares on a stock exchange may be affected by such volatility.

Economic Conditions

Unfavorable economic conditions may negatively impact the Company's financial viability as a result of increased financing costs and limited access to capital markets.

Dependence on Management

The Company is very dependent upon the personal efforts and commitment of its existing management. To the extent that management's services would be unavailable for any reason, a disruption to the operations of the Company could result, and other persons would be required to manage and operate the Company.

Conflicts of Interest

The Company's directors and officers may serve as directors and officers or may be associated with other reporting companies or have significant shareholdings in other public companies. To the extent that such other companies may participate in business or asset acquisitions, dispositions, or ventures in which the Company may participate, the directors and officers of the Company may have a conflict of interest in negotiating and concluding terms respecting the transaction. If a conflict of interest arises, the Company will follow the provisions of the Business Corporations Act, British Columbia ("Corporations Act") in dealing with conflicts of interest.

RISKS AND UNCERTAINTIES (CONTINUED)

Conflicts of Interest (continued)

These provisions state, where a director/officer has such a conflict, that the director/officer must at a meeting of the board, disclose his interest and refrain from voting on the matter unless otherwise permitted by the Corporations Act. In accordance with the laws of the Province of British Columbia, the directors and officers of the Company are required to act honestly, in good faith and in the best interests of the Company.

ADDITIONAL DISCLOSURE FOR VENTURE ISSUERS WITHOUT SIGNIFICANT REVENUE

Additional disclosure concerning the Company's general and administrative expenses and exploration and evaluation costs is provided in the Company's statement of loss and note disclosures contained in its financial statements for the period ended October 31, 2022.

Dividends

The Company has no earnings or dividend record and is unlikely to pay any dividends in the foreseeable future as it intends to employ available funds for mineral exploration and development. Any future determination to pay dividends will be at the discretion of the board of directors and will depend on the Company's financial condition, results of operations, capital requirements and such other factors as the board of directors deem relevant.

Management's Responsibility for Financial Statements

The information provided in this report, including the financial statements, is the responsibility of management. In the preparation of these statements, estimates are sometimes necessary to make a determination of future values for certain assets or liabilities. Management believes such estimates have been based on careful judgments and have been properly reflected in the accompanying financial statements.

Nature of the Securities

The purchase of the Company's securities involves a high degree of risk and should be undertaken only by investors whose financial resources are sufficient to enable them to assume such risks. The Company's securities should not be purchased by persons who cannot afford the possibility of the loss of their entire investment. Furthermore, an investment in the Company's securities should not constitute a major portion of an investor's portfolio.

Proposed Transactions

There are currently no significant proposed transactions except as otherwise disclosed in this MD&A. Confidentiality agreements and non-binding agreements may be entered into from time to time, with independent entities to allow for discussions of the potential acquisition and/or development of certain properties.

Approval

The Board of Directors oversees management's responsibility for financial reporting and internal control systems through an Audit Committee. This Committee meets periodically with management and annually with the independent auditors to review the scope and results of the annual audit and to review the financial statements and related financial reporting and internal control matters before the financial statements are approved by the Board of Directors and submitted to the shareholders of the Company. The Board of Directors of the Company has approved the financial statements and the disclosure contained in this MD&A. A copy of this MD&A will be provided to anyone who requests it.

**ADDITIONAL DISCLOSURE FOR VENTURE ISSUERS WITHOUT SIGNIFICANT REVENUE
(CONTINUED)**

Forward Looking Information

Certain statements in this document constitute “forward-looking statements” and are based on current expectations and involve risks and uncertainties, referred to above and or in Gold Tree’s financial statements for the period ended October 31, 2022, that could cause actual events or results to differ materially from estimated or anticipated events or results reflected in the forward-looking statements. Examples of such forward looking statements include statements regarding future anticipated results of exploration programs and development programs, including, but not limited to, the geology, grade and continuity of mineral deposits and conclusions of economic evaluations, and the possibility that future exploration, development or mining results will not be consistent with the Company’s expectations, metal prices, demand for metals, currency exchange rates, political and operational risks inherent in mining or development activities, legislative factors relating to prices, taxes, royalties, land use, title and permits, importing and exporting of minerals, environmental protection, expenditures on property, plant and equipment, increases and decreases in reserves and/or resources and anticipated grades and recovery rates and are or may be based on assumptions and/or estimates related to future economic, market and other conditions.

This list is not exhaustive and should be considered carefully by prospective investors, who should not place undue reliance on such forward-looking statements. Factors that could cause actual results, developments or events to differ materially from those anticipated include, among others, the factors described or referred to elsewhere herein including, without limitation, under the heading “Risks and Uncertainties” and/or the financial statements and include unanticipated and/or unusual events as well as actual results of planned exploration and development programs and associated risk. Many of such factors are beyond the Company’s ability to control or predict. Actual results may differ materially from those anticipated. Readers of this MD&A are cautioned not to put undue reliance on forward looking statements due to their inherent uncertainty. Forward-looking statements are made based upon management’s beliefs, estimates and opinions on the date the statements are made, which management believes are reasonable, and the Company undertakes no obligation to update forward-looking statements if these beliefs, estimates and opinions or other circumstances should change, except as otherwise required by applicable law. These forward-looking statements should not be relied upon as representing management’s views as of any date subsequent to the date of this MD&A. Additional information, including interim and annual financial statements, the management information circulars and other disclosure documents, may also be examined and/or obtained through the Internet by accessing Gold Tree’s website at www.goldtreeresources.com.