

No securities regulatory authority has expressed an opinion about these securities and it is an offence to claim otherwise. This prospectus does not constitute a public offering of securities.

The securities offered hereby have not been and will not be registered under the United States Securities Act of 1933, as amended (the “U.S. Securities Act”), or any state securities laws, and except pursuant to an exemption from registration under the U.S. Securities Act and applicable state securities laws, may not be offered or sold, directly or indirectly, within the United States or to, or for the account or benefit of, a U.S. Person (as that term is defined in Regulation S under the U.S. Securities Act). This prospectus does not constitute an offer to sell or a solicitation of an offer to buy any of the securities offered hereby within the United States or to, or for the account or benefit of, any U.S. Persons.

New Issue

January 8, 2021

PROSPECTUS

SNOWY OWL GOLD CORP.

815,000 Common Shares issuable on deemed conversion of 815,000 Special Warrants

This long form prospectus (the “**Prospectus**”) of Snowy Owl Gold Corp. (the “**Company**”), is being filed with the British Columbia Securities Commission (the “**BCSC**”) for the purposes of the Company becoming a reporting issuer pursuant to applicable securities legislation in the Province of British Columbia and to qualify the distribution of the following securities: 815,000 common shares (the “**Common Shares**”) in the capital of the Company issuable upon the deemed conversion of all of the currently issued and outstanding special warrants (the “**Special Warrants**”) of the Company. Upon the final receipt of this Prospectus by the BCSC, the Company will become a reporting issuer in British Columbia. Since no securities are being offered pursuant to this Prospectus, no proceeds will be raised and all expenses in connection with the preparation and filing of this Prospectus will be paid by the Company from its general corporate funds.

The Special Warrants were issued, on a private placement basis, on April 19, 2019, at a price of \$0.05 per Special Warrant, to purchasers in the Province of British Columbia and to Vested Technology Corp. (a start-up equity crowdfunding portal), pursuant to certain prospectus exemptions under applicable securities legislation in the Province of British Columbia (collectively the “**Private Placement**”). Collectively, the Common Shares issuable upon the conversion of the Special Warrants are referred to herein as the “**Qualified Securities**”. **The Special Warrants are not available for purchase pursuant to this prospectus and no additional funds are to be received by the Company from the distribution of the Qualified Securities.**

Each Special Warrant is represented by a Special Warrant Certificate and will be deemed converted and exchanged, without payment of any additional consideration and without any further action by the holder, for one Common Share, on the third business day after the Prospectus Receipt Date (defined herein). The Special Warrants and the conditions necessary for them to be converted for Common Shares are described in more detail under the heading “*Description of Securities*” in this prospectus.

The Company has granted to each holder of a Special Warrant a contractual right of rescission of the prospectus-exempt transaction under which the Special Warrant was initially acquired. The contractual right of rescission provides that if a holder of a Special Warrant who acquires another security of the

Company on exercise of the Special Warrant as provided for in this Prospectus is, or becomes, entitled under the securities legislation of a jurisdiction to the remedy of rescission because of this Prospectus or an amendment to this Prospectus containing a misrepresentation, (a) the holder is entitled to rescission of both the holder's exercise of its Special Warrant and the private placement transaction under which the Special Warrant was initially acquired, (b) the holder is entitled in connection with the rescission to a full refund of all consideration paid to the Company on the acquisition of the Special Warrant, and (c) if the holder is a permitted assignee of the interest of the original Special Warrant subscriber, the holder is entitled to exercise the rights of rescission and refund as if the holder was the original subscriber.

There is no market through which the securities of the Company may be sold. This may affect the pricing of the Company's securities in the secondary markets, the transparency and availability of trading prices, the liquidity of the Company's securities and the extent of issuer regulations. See "Risk Factors" and "Forward-Looking Information".

The Canadian Securities Exchange (the "CSE") has conditionally approved the listing (the "**Listing**") of the Company's Common Shares under the symbol "SNOW". The Listing is subject to the Company fulfilling all of the listing requirements of the CSE and meeting all minimum requirements. As at the date of this Prospectus, the Company does not have any of its securities listed or quoted, has not applied to list or quote any of its securities, and does not intend to apply to list or quote any of its securities, on the Toronto Stock Exchange, Aequitas Neo Exchange Inc., a U.S. marketplace, or a marketplace outside Canada and the United States of America.

No underwriter has been involved in the preparation of this Prospectus or performed any review or independent due diligence of the contents of this Prospectus.

This Prospectus does not constitute an offer to sell or a solicitation of an offer to buy any securities.

An investment in Common Shares of the Company is highly speculative due to various factors, including the nature and stage of development of the business of the Company. An investment in these securities should only be made by persons who can afford the total loss of their investment. See "Risk Factors".

Investors are advised to consult their own tax advisors regarding the application of Canadian federal income tax laws to their particular circumstances, as well as any other provincial, foreign and other tax consequences of acquiring, holding, or disposing of Common Shares, including the Canadian federal income tax consequences applicable to a foreign controlled Canadian corporation that acquires Common Shares.

Prospective investors should rely only on the information contained in this Prospectus. The Company has not authorized anyone to provide you with different information. Readers should assume that the information appearing in this Prospectus is accurate only as of its date, regardless of its time of delivery. The Company's business, financial condition, results of operations and prospects may have changed since that date.

In this Prospectus, "we", "us", "our" and the "Company" refers to Snowy Owl Gold Corp., a corporation existing pursuant to the *Business Corporations Act* (British Columbia).

The Company's head office is located at 1100 - 1111 Melville St., Vancouver, B.C. V6E 3V6 and the Company's registered office is located at 1055 West Georgia Street, 1500 Royal Centre, P.O. Box 11117, Vancouver, B.C. V6E 4N7.

TABLE OF CONTENTS

GLOSSARY	1
GLOSSARY OF TECHNICAL TERMS	5
CURRENCY.....	7
FORWARD-LOOKING INFORMATION	7
PROSPECTUS SUMMARY	9
CORPORATE STRUCTURE	12
DESCRIPTION OF THE BUSINESS.....	12
HISTORY	12
THE PROPERTY	14
USE OF AVAILABLE FUNDS.....	35
DIVIDENDS OR DISTRIBUTIONS	36
SELECTED FINANCIAL INFORMATION AND MANAGEMENT’S DISCUSSION AND ANALYSIS	36
DESCRIPTION OF SECURITIES.....	40
CONSOLIDATED CAPITALIZATION.....	42
OPTIONS TO PURCHASE SECURITIES	42
PRIOR SALES.....	43
ESCROWED SECURITIES AND SECURITIES SUBJECT TO CONTRACTUAL RESTRICTION ON TRANSFER	43
PRINCIPAL SECURITYHOLDERS	45
DIRECTORS AND EXECUTIVE OFFICERS.....	45
EXECUTIVE COMPENSATION	49
INDEBTEDNESS OF DIRECTORS AND EXECUTIVE OFFICERS	51
AUDIT COMMITTEE AND CORPORATE GOVERNANCE.....	51
CORPORATE GOVERNANCE	53
RISK FACTORS	54
PROMOTER.....	59
LEGAL PROCEEDINGS	60
INTEREST OF MANAGEMENT AND OTHERS IN MATERIAL TRANSACTIONS.....	60
AUDITORS	60
REGISTRAR AND TRANSFER AGENT.....	61
MATERIAL CONTRACTS	61
EXPERTS	61
OTHER MATERIAL FACTS	61
FINANCIAL STATEMENTS	61
SCHEDULE “A” SNOWY OWL GOLD CORP. FINANCIAL STATEMENTS.....	A-1
SCHEDULE “B” AUDIT COMMITTEE CHARTER.....	B-1
CERTIFICATE OF SNOWY OWL GOLD CORP.....	B-1
CERTIFICATE OF THE PROMOTER	B-1

GLOSSARY

The following is a glossary of certain terms used in this Prospectus. Terms and abbreviations used in the financial statements of the Company may be defined separately and the terms defined below may not be used therein.

“**2020 Private Placement**” means the non-brokered private placement by the Company of: (i) 7,000,000 Units at a price of \$0.05 per Unit; and (ii) 3,250,000 FT Shares at a price of \$0.05 per FT Share, for aggregate gross proceeds of \$512,500, which closed on June 25, 2020;

“**Authors**” means Alain-Jean Beaugard, P. Geo. (OGQ # 227) (Ordre des géologues du Québec) and Daniel Gaudreault, P. Eng. (OIQ # 39834) (Ordre des ingénieurs du Québec) from Geologica Groupe-Conseil Inc., the authors of the Technical Report;

“**BCBCA**” means the *Business Corporations Act* (British Columbia), as amended, together with all regulations promulgated thereto;

“**Board**” means the board of directors of the Company;

“**Finder Shares**” means the 372,000 Common Shares issued to registered dealers in connection with the closing of the 2020 Private Placement;

“**Finder Warrants**” means the 364,000 common share purchase warrants of the Company issued to registered dealers in connection with the closing of the 2020 Private Placement. Each Finder Warrant entitles the holder thereof to acquire one Common Share, at an exercise price of \$0.10, until June 25, 2022;

“**CEO**” means chief executive officer;

“**CFO**” means chief financial officer;

“**Common Shares**” means the common shares in the capital of the Company and “**Common Share**” means any one of them;

“**Company**” means Snowy Owl Gold Corp.;

“**December 2020 Private Placement**” means the non-brokered private placement by the Company of: (i) 5,300,000 December Units at a price of \$0.05 per Unit; and (ii) 1,970,000 December FT Shares at a price of \$0.05 per December FT Share, for aggregate gross proceeds of \$363,500, which closed on December 15, 2020;

“**December Finder Shares**” means the 564,000 Common Shares issued to registered dealers in connection with the closing of the December 2020 Private Placement;

“**December Finder Warrants**” means the 564,000 common share purchase warrants of the Company issued to registered dealers in connection with the closing of the December 2020 Private Placement. Each December Finder Warrant entitles the holder thereof to acquire one Common Share, at an exercise price of \$0.10, until December 15, 2022;

“**December FT Shares**” means the 1,970,000 Common Shares issued on a “flow-through” basis, at a price of \$0.05 per FT Share, as part of the December 2020 Private Placement;

“**December Units**” means the 5,300,000 units, issued at a price of \$0.05 per Unit, as part of the December 2020 Private Placement, with each December Unit consisting of (i) one Common Share and (ii) one-half of one December Warrant;

“**December Warrants**” means the 2,650,000 warrants to purchase up to 2,650,000 Common Shares, at an exercise price of \$0.10, until December 15, 2022;

“**December Warrant Shares**” means the 2,650,000 Common Shares issuable upon the exercise of the December Warrants comprised in the Units issued as part of the December 2020 Private Placement;

“**Escrow Agreements**” means the NP 46-201 escrow agreement to be entered into on or before the Prospectus Receipt Date among the Company, the escrow agent and certain shareholders of the Company;

“**Exchange**” or “**CSE**” means the Canadian Securities Exchange;

“**FT Shares**” means the 3,250,000 Common Shares issued on a “flow-through” basis, at a price of \$0.05 per FT Share, as part of the 2020 Private Placement;

“**Listing**” means the proposed listing of the Common Shares on the CSE for trading;

“**Listing Date**” means the date on which the Common Shares of the Company are listed for trading on the Exchange;

“**MD&A**” means management’s discussion and analysis of financial condition and operating results;

“**Named Executive Officers**” or “**NEOs**” has the meaning set forth under “Executive Compensation”;

“**NI 41-101**” means National Instrument 41-101 *General Prospectus Requirements* of the Canadian Securities Administrators;

“**NI 43-101**” means National Instrument 43-101 *Standards of Disclosure for Mineral Properties* of the Canadian Securities Administrators;

“**NI 52-110**” means National Instrument 52-110 *Audit Committees* of the Canadian Securities Administrators;

“**NI 58-101**” means National Instrument 58-101 *Disclosure of Corporate Governance Practices* of the Canadian Securities Administrators;

“**NP 46-201**” means National Policy 46-201 *Escrow for Initial Public Offerings* of the Canadian Securities Administrators;

“**NP 58-201**” means National Policy 58-201 *Corporate Governance Guidelines* of the Canadian Securities Administrators;

“**Options**” means options to purchase Common Shares issued pursuant to the Option Plan;

“**Option Plan**” means the Company’s share option plan adopted on June 4, 2020 by the Board, and providing for the granting of incentive options to the Company’s directors, officers, employees and consultants in accordance with the rules and policies of the Exchange;

“**Phase 1**” means the first phase of the exploration program for the Property proposed by the Authors in the Technical Report. See “The Property –Proposed Budget”;

“**Phase 2**” means the second phase of the exploration program for the Property proposed by the Authors in the Technical Report. See “The Property –Proposed Budget”;

“Principal” of an issuer means:

- (a) a person or company who acted as a promoter of the Company within two years before the prospectus;
- (b) a director or senior officer of the Company or any of its material operating subsidiaries at the time of the prospectus;
- (c) a person or company that holds securities carrying more than 20% of the voting rights attached to the Company’s outstanding securities immediately before and immediately after the Company’s Listing Date; or
- (d) a person or company that:
 - (i) holds securities carrying more than 10% of the voting rights attached to the Company’s outstanding securities immediately before and immediately after the Company’s Listing Date, and
 - (ii) has elected or appointed, or has the right to elect or appoint, one or more directors or senior officers of the Company or any of its material operating subsidiaries;

“Private Placement” means the non-brokered private placement of the Company of 815,000 Special Warrants (665,000 Special Warrants issued to subscribers and 150,000 Special Warrants issued to Vested Technology Corp. as compensation) for gross proceeds to the Company of \$33,250, which closed on April 19, 2019, and which will result in the deemed conversion of the 815,000 Special Warrants for 815,000 Common Shares;

“Property” means the Golden Eagle Property located in the Abitibi region in the Province of Quebec, consisting of 161 mineral claims, and all mining leases and other mining interests derived from any such claims, including any mineral leases or other interests into which such mineral claims may have been converted;

“Prospectus” means this prospectus dated January 8, 2021;

“Prospectus Receipt Date” means the date that a receipt for a final prospectus qualifying the distribution of the Qualified Securities is issued to the Resulting Issuer from the securities regulatory authority in British Columbia;

“Purchase Agreement” means the arm’s length purchase and sale agreement entered into on April 17, 2020, between the Company and the Sellers;

“Qualified Person” has the meaning given to it in NI 43-101;

“Qualified Securities” has the meaning as set forth on the face page of this Prospectus;

“SEDAR” means the System for Electronic Document Analysis and Retrieval (www.sedar.com);

“Sellers” means Jean-François Montreuil, Quentin Yarie, Eric Steffler, Jegudiel Holdings Inc., 514 Finance Inc., Fiducie Ananke and David Patterson;

“Special Warrants” means the special warrants issued by the Company, at a price of \$0.05 per Special Warrant, pursuant to the Private Placement and entitling the holder thereof to acquire, for no additional consideration, one Common Share pursuant to the terms and conditions in the Special Warrant Certificates;

“**Special Warrant Certificate**” means a certificate representing Special Warrants;

“**Special Warrant Exercise Date**” means the date the Special Warrants are deemed to have been converted into one Common Share, which is the third business day after the Prospectus Receipt Date;

“**Technical Report**” means the report on the Property entitled “*NI 43-101 Technical Report on the Golden Eagle Property (According NI 43-101F1)*” dated December 4, 2020, prepared for the Company by the Authors, in accordance with NI 43-101;

“**Units**” means the 7,000,000 units, issued at a price of \$0.05 per Unit, as part of the 2020 Private Placement, with each Unit consisting of (i) one Common Share and (ii) one-half of one Warrant;

“**Warrants**” means the 3,500,000 warrants to purchase up to 3,500,000 Common Shares, at an exercise price of \$0.10, until June 25, 2022; and

“**Warrant Shares**” means the 3,500,000 Common Shares issuable upon the exercise of the Warrants comprised in the Units issued as part of the 2020 Private Placement.

GLOSSARY OF TECHNICAL TERMS

- “<” means less than;
- “>” means greater than;
- “%” means percent;
- “**2VD**” means 2nd calculated vertical derivative;
- “**AA**” means atomic absorption.
- “**AEM**” means airborne electromagnetic;
- “**Ag**” is the chemical symbol for the element silver;
- “**As**” is the chemical symbol for the element arsenic;
- “**Au**” is the chemical symbol for the element gold;
- “**Bi**” is the chemical symbol for the element bismuth;
- “**Cu**” is the chemical symbol for the element copper;
- “**CVG**” means calculated vertical gradient;
- “**DDH**” means diamond drill hole;
- “**DEM**” means digital terrain model
- “**ft**” means feet;
- “**g/t**” means grams per metric ton;
- “**Ga**” means giga-annum;
- “**GQC**” means greenstone quartz-carbonate;
- “**H₂O**” is the chemical symbol for water;
- “**Ha**” means hectares;
- “**Hg**” is the chemical symbol for the element mercury;
- “**K₂O**” is the chemical symbol for potassium oxide;
- “**Mo**” is the chemical symbol for the element molybdenum;
- “**Mt**” means metric tonnes;
- “**Na₂O**” is the chemical symbol for sodium oxide;
- “**NaCl**” is the chemical symbol for sodium chloride;
- “**Pb**” is the chemical symbol for the element lead;
- “**S**” is the chemical symbol for the element sulfur;
- “**Sb**” is the chemical symbol for the element antimony;
- “**Se**” is the chemical symbol for the element selenium;
- “**Te**” is the chemical symbol for the element tellurium;
- “**TiltDry**” means magnetic tilt-angle derivative;
- “**TMI**” means total magnetic intensity;

“**VMS**” means volcanogenic massive sulphide;

“**VTEM**” means versatile time domain electromagnetic;

“**W**” is the chemical symbol for the element tungsten;

“**wt%**” means weight percent;

“**Zn**” is the chemical symbol for the element zinc.

CURRENCY

In this Prospectus, unless otherwise indicated, all dollar amounts are expressed in Canadian dollars and references to \$ are to Canadian dollars.

FORWARD-LOOKING INFORMATION

Except for statements of historical fact relating to the Company, certain statements in this Prospectus may constitute forward-looking information, future oriented financial information, or financial outlooks (collectively, “forward-looking information”) within the meaning of Canadian securities laws. Forward-looking information may relate to this Prospectus, the Company’s future outlook and anticipated events or results and, in some cases, can be identified by terminology such as “may”, “could”, “should”, “expect”, “plan”, “anticipate”, “believe”, “intend”, “estimate”, “projects”, “predict”, “potential”, “targeted”, “possible”, “continue” or other similar expressions concerning matters that are not historical facts and include, but are not limited in any manner to, those with respect to commodity prices, mineral resources, mineral reserves, realization of mineral reserves, existence or realization of mineral resource estimates, the timing and amount of future production, the timing of construction of any proposed mine and process facilities, capital and operating expenditures, the timing of receipt of permits, rights and authorizations, and any and all other timing, development, operational, financial, economic, legal, regulatory and political factors that may influence future events or conditions, as such matters may be applicable. The forward-looking information includes, among other things, statements relating to:

- the Company’s intention to complete the listing of the Common Shares on the Exchange;
- the Company’s business plans focussed on the exploration and development of the Property;
- the proposed work program on the Property;
- costs and timing of future exploration and development activities;
- timing and receipt of approvals, consents and permits under applicable legislation;
- use of available funds and ability for the Company to raise additional funds;
- business objectives and milestones; and
- adequacy of financial resources.

Such forward-looking statements are based on a number of material factors and assumptions, and include the ultimate determination of mineral reserves, if any, the availability and final receipt of required approvals, licenses and permits, sufficient working capital to develop and operate any proposed mine, access to adequate services and supplies, economic conditions, commodity prices, foreign currency exchange rates, interest rates, access to capital and debt markets and associated costs of funds, availability of a qualified work force, and the ultimate ability to mine, process and sell mineral products on economically favourable terms. While the Company considers these assumptions to be reasonable based on information currently available to it, they may prove to be incorrect. Actual results may vary from such forward-looking information for a variety of reasons, including but not limited to risks and uncertainties disclosed in this Prospectus. See “Risk Factors”. Forward-looking statements are based upon management’s beliefs, estimates and opinions on the date the statements are made and, other than as required by law, the Company does not intend, and undertakes no obligation to update any forward looking information to reflect, among other things, new information or future events.

Upon becoming a reporting issuer, the Company intends to discuss in its quarterly and annual reports referred to as the Company's MD&A documents, any events and circumstances that occurred during the period to which such document relates that are reasonably likely to cause actual events or circumstances to differ materially from those disclosed in the Prospectus. New factors emerge from time to time, and it is not possible for management to predict all of such factors and to assess in advance the impact of each such factor on the Company's business or the extent to which any factor, or combination of factors, may cause actual results to differ materially from those contained in any forward-looking statement.

Investors are cautioned against placing undue reliance on forward-looking statements.

All of the forward-looking information contained in this Prospectus is expressly qualified by the foregoing cautionary statements. Investors should read this entire Prospectus and consult their own professional advisors to ascertain and assess the income tax, legal, risk factors and other aspects of their investment.

PROSPECTUS SUMMARY

The following is a summary of the principal features of this distribution and should be read together with the more detailed information and financial data and statements contained elsewhere in this Prospectus. You should read this entire prospectus carefully, especially the “Risk Factors” section of this prospectus.

The Company:	Snowy Owl Gold Corp. is a corporation existing under the BCBCA. See “Corporate Structure”.
Business of the Company:	The Company is engaged in the business of mineral exploration with a focus on precious metals. The Company’s current objective is to explore and, if warranted, develop the Property, an exploration stage gold property that consists of 161 claims located in the Abitibi region of the Province of Quebec, Canada. Should the Property not be deemed viable, the Company shall explore other financially viable business opportunities. See “Description of the Business” and “The Property”.
The Private Placement	Pursuant to the Private Placement, the Company issued 815,000 Special Warrants for gross proceeds of \$33,250 on April 19, 2019. See “Description of Securities”.
Issue Price:	\$0.05 per Special Warrant
Qualified Securities	This Prospectus is being filed to qualify the distribution of 815,000 Common Shares issuable upon the deemed conversion of 815,000 issued and outstanding Special Warrants.
Listing	The Company intends to list its Common Shares on the CSE under the trading symbol “SNOW” or such other symbol accepted by the CSE. Listing is subject to the Company fulfilling all of the requirements of the Exchange, including minimum public distribution requirements. See “Description of Securities.”
Available Funds and Principal Purposes:	It is anticipated that the Company will have available funds of approximately \$782,116, based on the current assets and cash position as of December 31, 2020, representing a working capital position of \$669,382. The Company’s working capital position increased since August 31, 2020, the most recent interim period, as a result of the closing of the December 2020 Private Placement. Upon the Listing, the principal purposes for the foregoing available funds are anticipated to be as follows:

Principal Purposes	Funds (\$)
General and administrative costs ⁽¹⁾	150,000
Phase 1 exploration program expenditures on the Property ⁽²⁾	293,250
Balance of estimated expenses for listing on the CSE	49,350
Payment of outstanding liabilities	112,734
Total use of available funds	605,334
Unallocated funds (unaudited)	176,782

Notes:

(1) This figure is for a forecasted period of 12 months and is comprised of: (i) \$24,000 of consulting fees to the CEO and CFO (\$12,000 each); (ii) \$66,000 of office and administrative costs, including office space use, office services and filing fees; and (iii) \$60,000 of professional fees, including accounting, audit and legal fees.

(2) See “The Property –Proposed Budget”. This figure is the recommended budget for Phase 1. As at the date of this Prospectus, the Company has incurred a total of \$84,000 in qualified expenditures on the Property, which are in addition to and do not form part of the recommended budget for Phase 1.

The Company intends to spend the funds available to it as stated in this Prospectus. There may be circumstances, however, where for sound business reasons a reallocation of funds may be necessary. Use of funds will be subject to the discretion of management. For further details, see “*Use of Available Funds - Available Funds and Principal Purposes*”.

The Company had negative cash flow from operating activities for the financial year ended May 31, 2020. To the extent that the Company has negative cash flow from operating activities in future periods, the Company may need to use a portion of proceeds from any offering to fund such negative cash flow. See “*Risk Factors – Negative Cash Flows From Operations*”.

Management, Directors & Officers:

The Board of Directors of the Company consists of Raymond Wladichuk, Elyssia Patterson, Edward Ierfino, David Patterson and Solomon Elimimian. The officers of the Company are Raymond Wladichuk (President and CEO), and Elyssia Patterson (CFO and Secretary). See “*Directors and Executive Officers*”.

Selected Consolidated Financial Information:

The following selected financial information has been derived from and is qualified in its entirety by the financial statements of the Company for the period from incorporation to May 31, 2019 (audited), annual financial statements of the Company for the year ended May 31, 2020 (audited), financial statements for the three month period ended August 31, 2020 (unaudited) and notes thereto included in this Prospectus, and should be read in conjunction with such financial statements and the related notes thereto included in Schedule A of this Prospectus. All financial statements of the Company are prepared in accordance with International Financial Reporting Standards. All amounts referred to as being derived from the financial statements of the Company are denoted in Canadian Dollars.

	As at and for the 3 months ended August 31, 2020 (unaudited) (\$)	As at and for the year ended May 31, 2020 (audited) (\$)	As at and for the period from incorporation to May 31, 2019 (audited) (\$)
Total Assets	\$909,973	\$444,551	\$73,466
Total Liabilities	\$141,966	\$42,632	-
Total Equity	\$768,007	\$401,919	\$73,466
Revenue	-	-	-
Net Loss and Comprehensive Loss for the Period	\$73,114	\$46,547	\$6,907

See “*Selected Financial Information and Management’s Discussion and Analysis.*”

Risk Factors:

Due to the nature of the Company’s business and the present stage of development of its business, the Company is subject to significant risks. Readers should carefully consider all such risks. Risk factors include, but are not limited to, limited operating history, speculative nature of mineral exploration, dilution, mineral titles, loss of interest in properties, permits and government regulations, environmental and safety regulations and risks, fluctuating

mineral prices, financing risks and competition. For a detailed description of these and other risks, please see “*Risk Factors*”.

CORPORATE STRUCTURE

Name and Incorporation

The Company was incorporated under the *Business Corporations Act* (British Columbia) on November 9, 2018 under the name 56 Acquisitions Inc. and subsequently changed its name to Snowy Owl Gold Corp. on May 20, 2020.

The Company's head office is located at 1100 - 1111 Melville St., Vancouver, B.C. V6E 3V6 and the Company's registered office is located at 1055 West Georgia Street, 1500 Royal Centre, P.O. Box 11117, Vancouver, B.C. V6E 4N7.

Inter-corporate Relationships

The Company does not have any subsidiaries.

DESCRIPTION OF THE BUSINESS

The principal business carried on and intended to be carried on by the Company is mineral exploration, focusing initially on the exploration and development of the Company's Property. The Company will continue to consider other opportunities to acquire and explore mining claims as they arise.

The Company owns the Property, which is located in the Province of Quebec and consists of 161 mining claims, acquired from the Sellers. The acquisition of the Property from the Sellers pursuant to the terms and conditions of the Purchase Agreement was an arm's length transaction. See "The Property".

Stated Business Objectives and Competitive Conditions

The Company's Property is in the exploration stage. The Company intends to use its available funds to carry out the Phase 1 of the exploration program for the Property, which is budgeted for \$293,250. See "The Property" and "USE OF AVAILABLE FUNDS".

As at the date of this Prospectus, the Company has incurred \$84,000 in qualified expenditures on the Property consisting primarily of an airborne high-resolution magnetic survey over the Property by Precision GeoSurveys Inc. The foregoing expenditures do not form part of Phase 1 of the exploration program for the Property.

The Company competes with other entities in the search for and acquisition of mineral properties. As a result of this competition, the majority of which is with companies with greater financial resources, the Company may be unable to acquire attractive properties in the future on terms it considers acceptable. The Company also competes for financing with other resource companies, many of whom have more advanced properties. There is no assurance that additional capital or other types of financing will be available to the Company if needed or that, if available, the terms of such financing will be favourable to the Company. See "Risk Factors".

HISTORY

Financings

On November 9, 2018, the Company completed a private placement (the "**Founder Round**") issuing 2,000,000 Common Shares at a price of \$0.025 per Common Share for aggregate gross proceeds of \$50,000.

On April 19, 2019, the Company completed the Private Placement issuing 815,000 Special Warrants, at a price of \$0.05 per Special Warrant, with each Special Warrant automatically converting into one Common

Share (the “**Special Warrant Shares**”) of the Company at no additional cost on the Special Warrants Exercise Date. Aggregate gross proceeds from the Private Placement were equal to \$33,250. Of the 815,000 Special Warrants, 150,000 Special Warrants were issued to Vested Technology Corp., a start-up equity crowdfunding portal, as compensation.

On June 25, 2020, the Company completed a private placement (the “**2020 Private Placement**”) of: (i) 7,000,000 units (each a “**Unit**”) at a price of \$0.05 per Unit; and (ii) 3,250,000 Common Shares on a “flow-through” basis (each a “**FT Share**”) at a price of \$0.05 per FT Share, for aggregate gross proceeds of \$512,500. Each Unit consists of (i) one Common Share and (ii) one-half of one transferable Common Share purchase warrant (each whole warrant, a “**Warrant**”). Each Warrant entitles the holder thereof to acquire one additional Common Share (the “**Warrant Shares**”) in the capital of the Company at a price of \$0.10 per Warrant Share until June 25, 2022. In connection with the 2020 Private Placement, the Company paid finder’s fees to registered dealers totalling \$36,600 and issued an aggregate of 364,000 Finder Warrants and 372,000 Finder Shares. All of the securities issued in connection with the 2020 Private Placement are subject to a statutory hold period.

On December 15, 2020, the Company completed a private placement (the “**December 2020 Private Placement**”) of: (i) 5,300,000 units (each a “**December Unit**”) at a price of \$0.05 per December Unit; and (ii) 1,970,000 Common Shares on a “flow-through” basis (each a “**December FT Share**”) at a price of \$0.05 per December FT Share, for aggregate gross proceeds of \$363,500. Each December Unit consists of (i) one Common Share and (ii) one-half of one transferable Common Share purchase warrant (each whole warrant, a “**December Warrant**”). Each Warrant entitles the holder thereof to acquire one additional Common Share (the “**December Warrant Shares**”) in the capital of the Company at a price of \$0.10 per Warrant Share until December 15, 2022. In connection with the December 2020 Private Placement, the Company issued an aggregate of 564,000 December Finder Warrants and 564,000 December Finder Shares to registered dealers. All of the securities issued in connection with the December 2020 Private Placement are subject to a statutory hold period. The Company did not pay any cash finder’s fees in connection with the December 2020 Private Placement.

Property Acquisition

On April 17, 2020, the Company entered into an arm’s length Purchase Agreement with the Sellers pursuant to which the Company acquired a 100% interest in and to the Property in consideration for the issuance of 6,500,000 Common Shares allocated to the individual Sellers in proportion with their respective interest in the Property.

The Purchase Agreement also contains an area-of-mutual influence (“**AMI**”) provision applicable to the one (1) kilometer-wide area surrounding the Property boundary and pursuant to which, if any one or more of the Sellers, or their affiliates (the “**Acquiring Party**”), acquires any mineral or property interests within the AMI, or if the Acquiring Party enters into any type of agreement by which such an interest may be earned or otherwise acquired therein, then the Acquiring Party must promptly notify the Company in writing of such acquisition or such agreement. The Company will have thirty (30) calendar days from the date of receipt of the written notice to inform the Acquiring Party of its decision to participate or decline participation in the new property or interests.

There are no other royalties, back-in rights, payments, or other agreements to which the Property is subject.

THE PROPERTY

Technical Report

The information in this Prospectus with respect to the Property is derived from a NI 43-101 compliant report entitled “*NI 43-101 Technical Report on the Golden Eagle Property (According NI 43-101F1)*” prepared by Geologica Groupe-Conseil Inc. (“**Geologica**”) and dated December 4, 2020. Geologica is an independent mining exploration consulting firm based in Val-d’Or, Quebec. The independent “Qualified Persons” (QPs) and Authors of the Technical Report are Messrs. Alain-Jean Beauregard, P. Geo. (OGQ # 00227) and Daniel Gaudreault, P. Eng. (OIQ # 39834) from Geologica. The full text of the Technical Report is available for review at the registered office of the Company at 1100 - 1111 Melville St., Vancouver, B.C. V6E 3V6 and may also be accessed online, under the Company’s SEDAR profile at www.sedar.com.

Property Location

The Property is located in the Abitibi region approximately 190 kilometers NE of Val-d’Or and 120 kilometers ESE of Lebel-sur-Quévillon (Highways 117 & 113). The all season R0853 gravel road provides access, via Lebel-sur-Quévillon, to the south part of the property. A network of tertiary roads, such as forestry trails, provides easy access to this part of the property by all-terrain vehicles (ATV). Tertiary trails are almost non-existent in the northeast part of the property making it very difficult to access.

The Property is part of Bailly, Barry, Coursol and Lacroix Townships in National Topographic System (NTS) map sheets 32B13 & 32B14. The center of the Property is located approximately at UTM NAD 83 Zone 18 coordinates 461,000 mE & 5,420,000 mN.

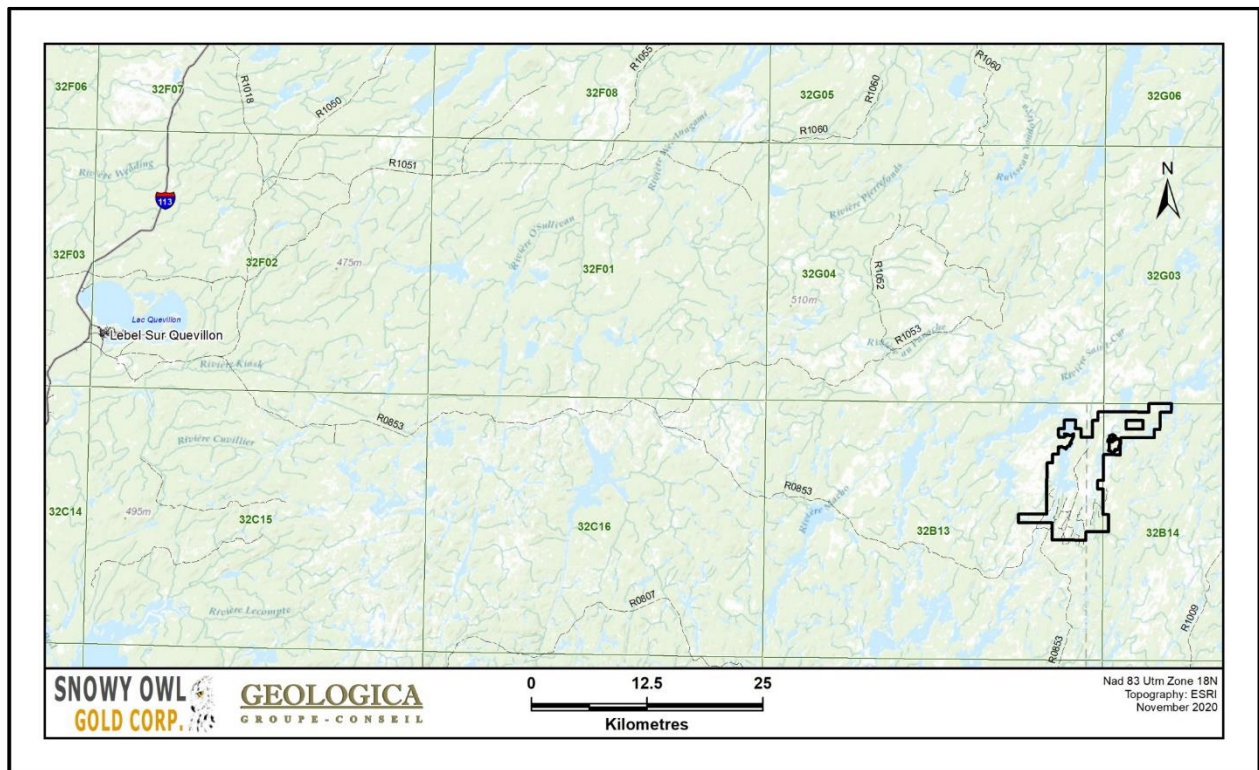


Figure 2 - Detailed Property Location

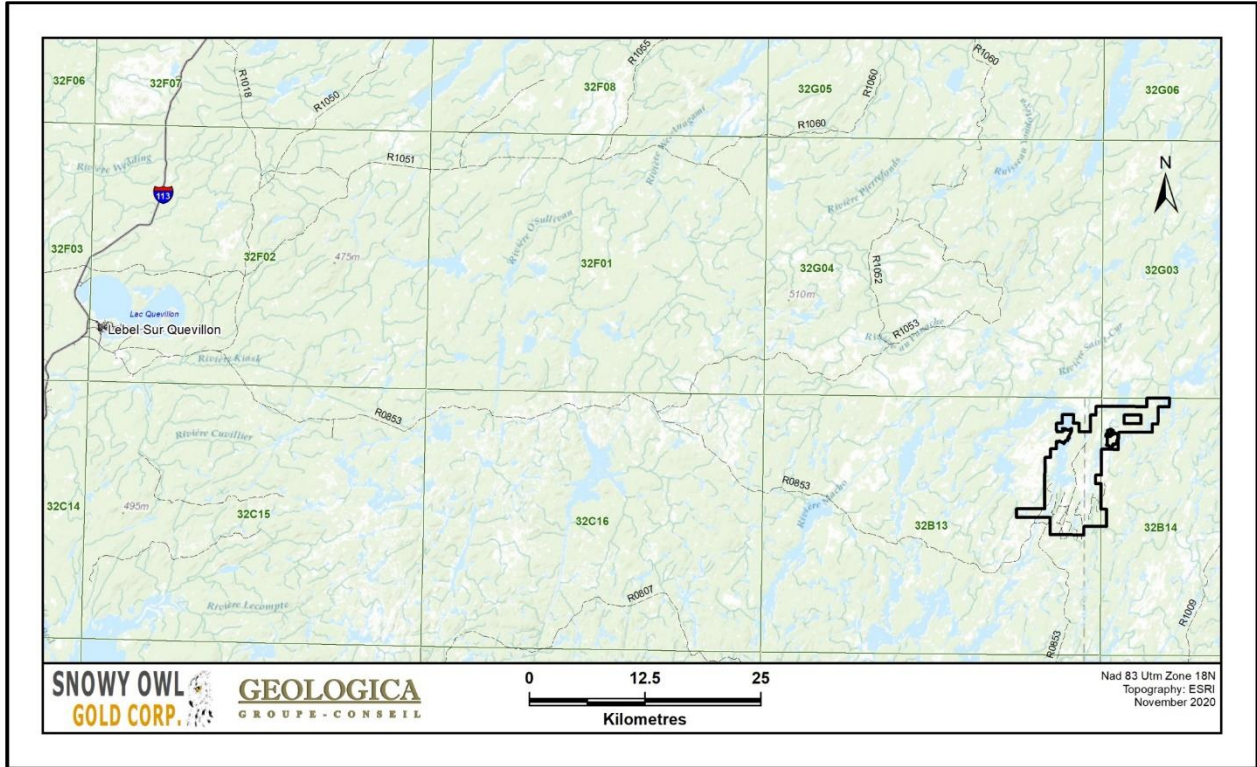


Figure 3 – Property Access

Claim Status

The Property consists of 161 map designated mineral claims (“CDC”) covering a total area of 8,887.66 hectares. All claims are in good standing and are 100% registered to the Company. The status of the claims was validated using “GESTIM”, the official Quebec government system for mining titles management, easily available on the Quebec Natural Resources Ministry Website (www.gestim.mines.gouv.qc.ca). No surface rights are associated to the land holdings.

Table 1 - Mining Title List of the Golden Eagle Property

Snowy Owl Gold Corp. (99576) 100 % (responsible)						
	Title No	Expiry Date	Area (Ha)	Excess Work	Required Work	Required Fees
1	2553896	2023-01-30 23:59	56.61	\$0.00	\$1,200.00	\$66.25
2	2553897	2023-01-30 23:59	56.61	\$0.00	\$1,200.00	\$66.25
3	2553898	2023-01-30 23:59	56.61	\$0.00	\$1,200.00	\$66.25
4	2553899	2023-01-30 23:59	56.61	\$0.00	\$1,200.00	\$66.25
5	2553900	2023-01-30 23:59	56.61	\$0.00	\$1,200.00	\$66.25
6	2553901	2023-01-30 23:59	56.61	\$0.00	\$1,200.00	\$66.25
7	2553902	2023-01-30 23:59	56.6	\$0.00	\$1,200.00	\$66.25
8	2553903	2023-01-30 23:59	56.6	\$0.00	\$1,200.00	\$66.25
9	2553904	2023-01-30 23:59	56.6	\$0.00	\$1,200.00	\$66.25
10	2553905	2023-01-30 23:59	56.6	\$0.00	\$1,200.00	\$66.25
11	2553906	2023-01-30 23:59	56.6	\$0.00	\$1,200.00	\$66.25
12	2553907	2023-01-30 23:59	56.6	\$0.00	\$1,200.00	\$66.25
13	2553908	2023-01-30 23:59	56.6	\$0.00	\$1,200.00	\$66.25
14	2553909	2023-01-30 23:59	56.6	\$0.00	\$1,200.00	\$66.25
15	2553910	2023-01-30 23:59	56.6	\$0.00	\$1,200.00	\$66.25

Snowy Owl Gold Corp. (99576) 100 % (responsible)						
	Title No	Expiry Date	Area (Ha)	Excess Work	Required Work	Required Fees
16	2553911	2023-01-30 23:59	56.59	\$0.00	\$1,200.00	\$66.25
17	2553912	2023-01-30 23:59	56.59	\$0.00	\$1,200.00	\$66.25
18	2553913	2023-01-30 23:59	56.59	\$0.00	\$1,200.00	\$66.25
19	2553914	2023-01-30 23:59	56.59	\$0.00	\$1,200.00	\$66.25
20	2553915	2023-01-30 23:59	56.59	\$0.00	\$1,200.00	\$66.25
21	2553916	2023-01-30 23:59	56.59	\$0.00	\$1,200.00	\$66.25
22	2553917	2023-01-30 23:59	56.59	\$0.00	\$1,200.00	\$66.25
23	2553918	2023-01-30 23:59	56.59	\$0.00	\$1,200.00	\$66.25
24	2553919	2023-01-30 23:59	56.59	\$0.00	\$1,200.00	\$66.25
25	2553920	2023-01-30 23:59	56.59	\$0.00	\$1,200.00	\$66.25
26	2553921	2023-01-30 23:59	56.59	\$0.00	\$1,200.00	\$66.25
27	2553922	2023-01-30 23:59	56.59	\$0.00	\$1,200.00	\$66.25
28	2553923	2023-01-30 23:59	56.59	\$0.00	\$1,200.00	\$66.25
29	2553924	2023-01-30 23:59	56.59	\$0.00	\$1,200.00	\$66.25
30	2553925	2023-01-30 23:59	56.59	\$0.00	\$1,200.00	\$66.25
31	2553926	2023-01-30 23:59	56.58	\$0.00	\$1,200.00	\$66.25
32	2553927	2023-01-30 23:59	56.58	\$0.00	\$1,200.00	\$66.25
33	2553928	2023-01-30 23:59	56.58	\$0.00	\$1,200.00	\$66.25
34	2553929	2023-01-30 23:59	56.58	\$0.00	\$1,200.00	\$66.25
35	2553930	2023-01-30 23:59	56.58	\$0.00	\$1,200.00	\$66.25
36	2553931	2023-01-30 23:59	56.58	\$0.00	\$1,200.00	\$66.25
37	2553932	2023-01-30 23:59	56.58	\$0.00	\$1,200.00	\$66.25
38	2553933	2023-01-30 23:59	56.58	\$0.00	\$1,200.00	\$66.25
39	2553934	2023-01-30 23:59	56.6	\$0.00	\$1,200.00	\$66.25
40	2553935	2023-01-30 23:59	56.59	\$0.00	\$1,200.00	\$66.25
41	2553936	2023-01-30 23:59	56.58	\$0.00	\$1,200.00	\$66.25
42	2553937	2023-01-30 23:59	56.58	\$0.00	\$1,200.00	\$66.25
43	2553938	2023-01-30 23:59	56.57	\$0.00	\$1,200.00	\$66.25
44	2553939	2023-01-30 23:59	56.57	\$0.00	\$1,200.00	\$66.25
45	2553940	2023-01-30 23:59	56.57	\$0.00	\$1,200.00	\$66.25
46	2553941	2023-01-30 23:59	56.57	\$0.00	\$1,200.00	\$66.25
47	2553942	2023-01-30 23:59	56.57	\$0.00	\$1,200.00	\$66.25
48	2553943	2023-01-30 23:59	56.57	\$0.00	\$1,200.00	\$66.25
49	2553944	2023-01-30 23:59	56.57	\$0.00	\$1,200.00	\$66.25
50	2553945	2023-01-30 23:59	56.57	\$0.00	\$1,200.00	\$66.25
51	2553946	2023-01-30 23:59	56.57	\$0.00	\$1,200.00	\$66.25
52	2553947	2023-01-30 23:59	56.57	\$0.00	\$1,200.00	\$66.25
53	2553948	2023-01-30 23:59	56.57	\$0.00	\$1,200.00	\$66.25
54	2553949	2023-01-30 23:59	56.57	\$0.00	\$1,200.00	\$66.25
55	2553950	2023-01-30 23:59	56.56	\$0.00	\$1,200.00	\$66.25
56	2553951	2023-01-30 23:59	56.56	\$0.00	\$1,200.00	\$66.25
57	2553952	2023-01-30 23:59	56.56	\$0.00	\$1,200.00	\$66.25
58	2553953	2023-01-30 23:59	56.56	\$0.00	\$1,200.00	\$66.25
59	2553954	2023-01-30 23:59	56.56	\$0.00	\$1,200.00	\$66.25
60	2553955	2023-01-30 23:59	56.56	\$0.00	\$1,200.00	\$66.25
61	2553956	2023-01-30 23:59	56.56	\$0.00	\$1,200.00	\$66.25
62	2553957	2023-01-30 23:59	56.56	\$0.00	\$1,200.00	\$66.25
63	2553958	2023-01-30 23:59	56.56	\$0.00	\$1,200.00	\$66.25
64	2553959	2023-01-30 23:59	56.56	\$0.00	\$1,200.00	\$66.25
65	2553960	2023-01-30 23:59	56.56	\$0.00	\$1,200.00	\$66.25
66	2553961	2023-01-30 23:59	56.56	\$0.00	\$1,200.00	\$66.25
67	2553962	2023-01-30 23:59	56.56	\$0.00	\$1,200.00	\$66.25

Snowy Owl Gold Corp. (99576) 100 % (responsible)						
	Title No	Expiry Date	Area (Ha)	Excess Work	Required Work	Required Fees
68	2553963	2023-01-30 23:59	56.56	\$0.00	\$1,200.00	\$66.25
69	2553964	2023-01-30 23:59	56.56	\$0.00	\$1,200.00	\$66.25
70	2553965	2023-01-30 23:59	56.56	\$0.00	\$1,200.00	\$66.25
71	2553966	2023-01-30 23:59	56.56	\$0.00	\$1,200.00	\$66.25
72	2553967	2023-01-30 23:59	56.55	\$0.00	\$1,200.00	\$66.25
73	2553968	2023-01-30 23:59	56.55	\$0.00	\$1,200.00	\$66.25
74	2553969	2023-01-30 23:59	56.55	\$0.00	\$1,200.00	\$66.25
75	2553970	2023-01-30 23:59	56.55	\$0.00	\$1,200.00	\$66.25
76	2553971	2023-01-30 23:59	56.55	\$0.00	\$1,200.00	\$66.25
77	2553972	2023-01-30 23:59	56.55	\$0.00	\$1,200.00	\$66.25
78	2553973	2023-01-30 23:59	56.55	\$0.00	\$1,200.00	\$66.25
79	2553974	2023-01-30 23:59	56.55	\$0.00	\$1,200.00	\$66.25
80	2553975	2023-01-30 23:59	56.55	\$0.00	\$1,200.00	\$66.25
81	2553976	2023-01-30 23:59	56.55	\$0.00	\$1,200.00	\$66.25
82	2553977	2023-01-30 23:59	56.54	\$0.00	\$1,200.00	\$66.25
83	2553978	2023-01-30 23:59	56.54	\$0.00	\$1,200.00	\$66.25
84	2553979	2023-01-30 23:59	56.54	\$0.00	\$1,200.00	\$66.25
85	2553980	2023-01-30 23:59	56.54	\$0.00	\$1,200.00	\$66.25
86	2553981	2023-01-30 23:59	56.54	\$0.00	\$1,200.00	\$66.25
87	2553982	2023-01-30 23:59	56.54	\$0.00	\$1,200.00	\$66.25
88	2553983	2023-01-30 23:59	56.54	\$0.00	\$1,200.00	\$66.25
89	2553984	2023-01-30 23:59	56.54	\$0.00	\$1,200.00	\$66.25
90	2553985	2023-01-30 23:59	56.54	\$0.00	\$1,200.00	\$66.25
91	2553986	2023-01-30 23:59	56.54	\$0.00	\$1,200.00	\$66.25
92	2553987	2023-01-30 23:59	56.53	\$0.00	\$1,200.00	\$66.25
93	2553988	2023-01-30 23:59	56.53	\$0.00	\$1,200.00	\$66.25
94	2553989	2023-01-30 23:59	56.53	\$0.00	\$1,200.00	\$66.25
95	2553990	2023-01-30 23:59	56.53	\$0.00	\$1,200.00	\$66.25
96	2553991	2023-01-30 23:59	56.53	\$0.00	\$1,200.00	\$66.25
97	2553992	2023-01-30 23:59	56.53	\$0.00	\$1,200.00	\$66.25
98	2553993	2023-01-30 23:59	56.53	\$0.00	\$1,200.00	\$66.25
99	2553994	2023-01-30 23:59	56.53	\$0.00	\$1,200.00	\$66.25
100	2553995	2023-01-30 23:59	56.53	\$0.00	\$1,200.00	\$66.25
101	2553996	2023-01-30 23:59	47.98	\$0.00	\$1,200.00	\$66.25
102	2553997	2023-01-30 23:59	49.36	\$0.00	\$1,200.00	\$66.25
103	2553998	2023-01-30 23:59	56.52	\$0.00	\$1,200.00	\$66.25
104	2553999	2023-01-30 23:59	56.52	\$0.00	\$1,200.00	\$66.25
105	2554000	2023-01-30 23:59	56.52	\$0.00	\$1,200.00	\$66.25
106	2554001	2023-01-30 23:59	56.52	\$0.00	\$1,200.00	\$66.25
107	2554002	2023-01-30 23:59	56.52	\$0.00	\$1,200.00	\$66.25
108	2554003	2023-01-30 23:59	56.52	\$0.00	\$1,200.00	\$66.25
109	2554004	2023-01-30 23:59	43.06	\$0.00	\$1,200.00	\$66.25
110	2554005	2023-01-30 23:59	56.51	\$0.00	\$1,200.00	\$66.25
111	2554006	2023-01-30 23:59	56.51	\$0.00	\$1,200.00	\$66.25
112	2554007	2023-01-30 23:59	56.51	\$0.00	\$1,200.00	\$66.25
113	2554008	2023-01-30 23:59	56.51	\$0.00	\$1,200.00	\$66.25
114	2554009	2023-01-30 23:59	56.51	\$0.00	\$1,200.00	\$66.25
115	2554010	2023-01-30 23:59	56.19	\$0.00	\$1,200.00	\$66.25
116	2554011	2023-01-30 23:59	19.92	\$0.00	\$500.00	\$33.75
117	2554012	2023-01-30 23:59	40.27	\$0.00	\$1,200.00	\$66.25
118	2554013	2023-01-30 23:59	53.97	\$0.00	\$1,200.00	\$66.25
119	2554014	2023-01-30 23:59	8.57	\$0.00	\$500.00	\$33.75

Snowy Owl Gold Corp. (99576) 100 % (responsible)						
	Title No	Expiry Date	Area (Ha)	Excess Work	Required Work	Required Fees
120	2554015	2023-01-30 23:59	13.45	\$0.00	\$500.00	\$33.75
121	2554016	2023-01-30 23:59	55.81	\$0.00	\$1,200.00	\$66.25
122	2554017	2023-01-30 23:59	42.55	\$0.00	\$1,200.00	\$66.25
123	2554018	2023-01-30 23:59	46.11	\$0.00	\$1,200.00	\$66.25
124	2554019	2023-01-30 23:59	56.5	\$0.00	\$1,200.00	\$66.25
125	2554020	2023-01-30 23:59	56.5	\$0.00	\$1,200.00	\$66.25
126	2554021	2023-01-30 23:59	56.5	\$0.00	\$1,200.00	\$66.25
127	2554022	2023-01-30 23:59	56.49	\$0.00	\$1,200.00	\$66.25
128	2554023	2023-01-30 23:59	56.49	\$0.00	\$1,200.00	\$66.25
129	2554024	2023-01-30 23:59	56.49	\$0.00	\$1,200.00	\$66.25
130	2554025	2023-01-30 23:59	56.49	\$0.00	\$1,200.00	\$66.25
131	2554026	2023-01-30 23:59	56.48	\$0.00	\$1,200.00	\$66.25
132	2554027	2023-01-30 23:59	56.5	\$0.00	\$1,200.00	\$66.25
133	2554028	2023-01-30 23:59	41.92	\$0.00	\$1,200.00	\$66.25
134	2554029	2023-01-30 23:59	56.34	\$0.00	\$1,200.00	\$66.25
135	2554030	2023-01-30 23:59	56.5	\$0.00	\$1,200.00	\$66.25
136	2554031	2023-01-30 23:59	56.5	\$0.00	\$1,200.00	\$66.25
137	2554032	2023-01-30 23:59	56.5	\$0.00	\$1,200.00	\$66.25
138	2554033	2023-01-30 23:59	56.5	\$0.00	\$1,200.00	\$66.25
139	2554034	2023-01-30 23:59	56.5	\$0.00	\$1,200.00	\$66.25
140	2554035	2023-01-30 23:59	56.5	\$0.00	\$1,200.00	\$66.25
141	2554036	2023-01-30 23:59	56.49	\$0.00	\$1,200.00	\$66.25
142	2554037	2023-01-30 23:59	56.49	\$0.00	\$1,200.00	\$66.25
143	2554038	2023-01-30 23:59	56.49	\$0.00	\$1,200.00	\$66.25
144	2554039	2023-01-30 23:59	56.49	\$0.00	\$1,200.00	\$66.25
145	2554040	2023-01-30 23:59	56.49	\$0.00	\$1,200.00	\$66.25
146	2554041	2023-01-30 23:59	56.49	\$0.00	\$1,200.00	\$66.25
147	2554042	2023-01-30 23:59	56.49	\$0.00	\$1,200.00	\$66.25
148	2554043	2023-01-30 23:59	56.48	\$0.00	\$1,200.00	\$66.25
149	2554044	2023-01-30 23:59	56.48	\$0.00	\$1,200.00	\$66.25
150	2554045	2023-01-30 23:59	56.48	\$0.00	\$1,200.00	\$66.25
151	2554046	2023-01-30 23:59	56.48	\$0.00	\$1,200.00	\$66.25
152	2554047	2023-01-30 23:59	56.48	\$0.00	\$1,200.00	\$66.25
153	2554048	2023-01-30 23:59	56.48	\$0.00	\$1,200.00	\$66.25
154	2554049	2023-01-30 23:59	56.48	\$0.00	\$1,200.00	\$66.25
155	2554050	2023-01-30 23:59	56.48	\$0.00	\$1,200.00	\$66.25
156	2554051	2023-01-30 23:59	56.48	\$0.00	\$1,200.00	\$66.25
157	2554052	2023-01-30 23:59	56.48	\$0.00	\$1,200.00	\$66.25
158	2554053	2023-01-30 23:59	56.47	\$0.00	\$1,200.00	\$66.25
159	2554054	2023-01-30 23:59	56.47	\$0.00	\$1,200.00	\$66.25
160	2554055	2023-01-30 23:59	56.47	\$0.00	\$1,200.00	\$66.25
161	2554056	2023-01-30 23:59	56.47	\$0.00	\$1,200.00	\$66.25

Total:	8887.65	\$0.00	\$191,100.00	\$10,568.75
---------------	----------------	---------------	---------------------	--------------------

From: Gestim, M.R.N.Q., November 2020
--

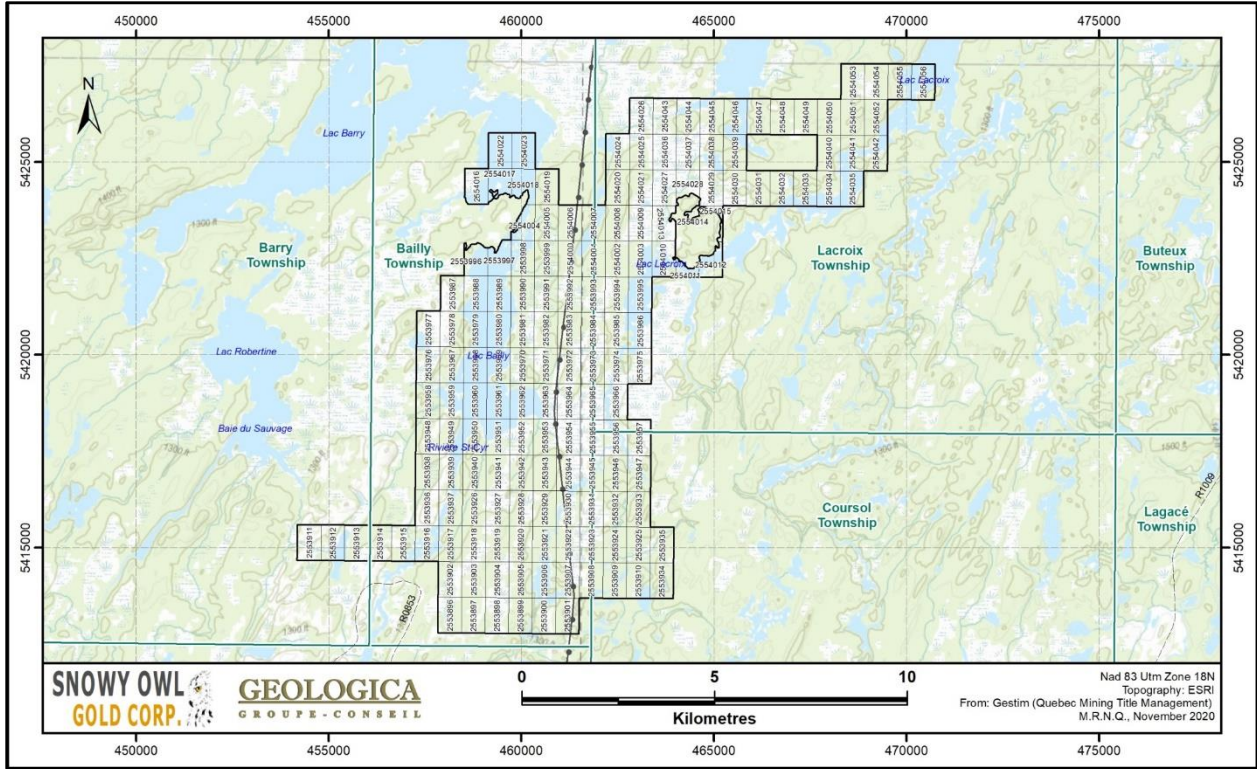


Figure 4 - Claim Map of the Golden Eagle Property

Environmental obligations, permits and other relevant factors

There are no known environmental concerns or land claim issues pending with respect to the Property. It is understood and agreed that the Property was received by the Company “as is” and that the Company shall ensure that all exploration programs on the Property are conducted in an environmentally sound manner.

The Authors are unaware of any environmental liabilities associated with the claims of the Property. However, the Authors have not conducted a thorough inspection of these claims. The exploration activities were planned to have a minimum impact on the environment.

Snowy Owl is responsible for obtaining all authorizations and permits from the “*Ministère de l’Energie et des Ressources Naturelles du Québec*” in the event of outcrop stripping and drilling activities.

To the best of the Authors’ knowledge, no other significant factors and risks are known that could affect the exploration work, except an economic risk, for example with the decline in metal prices resulting in a lack of liquidity through inadequate funding to achieve the exploration work.

Accessibility, local resources, infrastructure and physiography

The Property is located in the Abitibi region approximately 190 kilometres ENE of Val-d’Or and 120 kilometres east of the town of Lebel-sur-Quévillon. A network of tertiary forestry roads provides limited access to the southern part of the property by 4X4 vehicle. A high-tension power line crosses the central part of the property in a north-south orientation.

The property is located within a flat to low relief area with average altitude of 400 metres. The overburden mainly consists of Pleistocene glacial deposits. Few outcrops are located on the shores of the Lakes (Lacroix, Mista (Atikamekwranan) and Bailly), on hills and along logging forestry roads in the southern

parts. Climatic conditions are typical of the Canadian Shield with short and mild summers and long cold winters.

The Abitibi region, which has a population of approximately 145,000 people and a total area of 64,656 km² (Québec Statistic Institute, 2010), is a vast region that was created through mining and forestry development. The district is well known for its mineral deposits containing gold, silver, copper and zinc mineralization. Many of these deposits have been in production since the 1930s throughout the district. Specialized manpower and qualified mining contractors are present and readily available in the region. Mining, but mostly the forestry sector, also create an important road network providing access to the entire territory (primary, secondary and tertiary roads).

Lebel-sur-Quévillon is the largest community in the immediate area with a population of 2,160 people (census of 2016). The town was built at the beginning of the 1960s to house the employees of the Domtar pulp and paper mill, which was closed in 2008 due to the decline of the financial markets and purchased in 2012 by Fortress Paper Ltd. In 2016, a cogeneration project is being planned by Nexolia Bioenergy Inc. on the current site in order to produce thermal and mechanical energy. In 2018, the family-owned company Chantiers Chibougamau has completed the purchase of the energy production equipment, the land and the Kraft pulp and paper mill in order to produce cardboard packaging and specialized papers following the opening of new markets for Kraft pulp derivative products.

The Langlois Mine held by Nyrstar and located northeast of Lebel-sur-Quévillon is still in operation and Osisko Mining, which holds the Windfall Lake project, recently installed its administrative office and coreshack in Lebel-sur-Quévillon.

Climatic conditions are typical for the Canadian Shield, with short, mild summers and long, cold winters. Mean temperatures range from -16°C in January, to +17°C in July. The mean annual precipitation throughout the region ranges from 850 to 950 mm.

History

The Golden Eagle Property area in the southeastern part of the Urban-Barry Gold Belt, was very little explored for gold and base metals until today.

In 2003, the Ministry of Energy and Natural Resources of Quebec published the results of a rocks and sediments program sampling performed in the neighborhood of the Property (Figures 6 and 7 hereinbelow). An anomalous gold value of 280 ppb was obtained from a creek sediment sample in the south part of the Property near an outcrop described as being an altered gneiss with quartz vein and iron oxides previously recognized by the Ministry during a reconnaissance mapping in 2000 along a secondary logging road access (outcrop No. 3263 in SIGEOM).

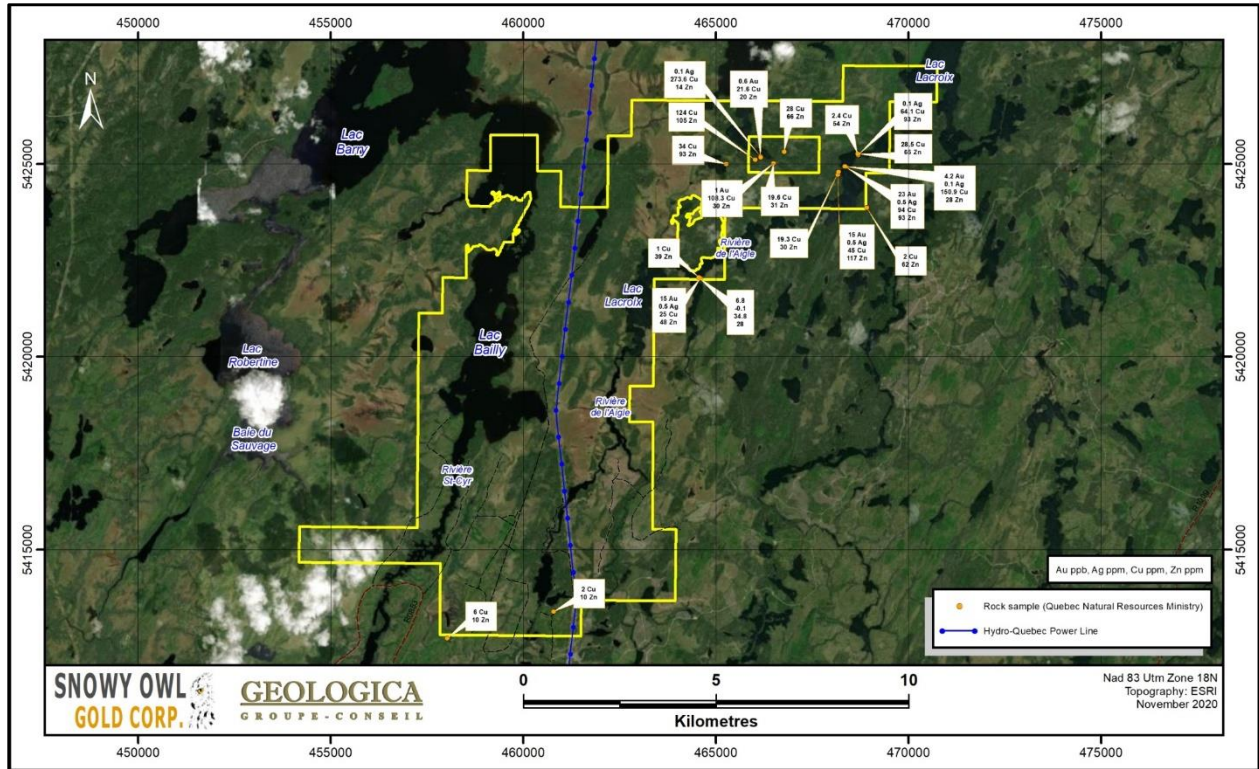


Figure 5 - Rock samples collected in the past by Quebec MERN

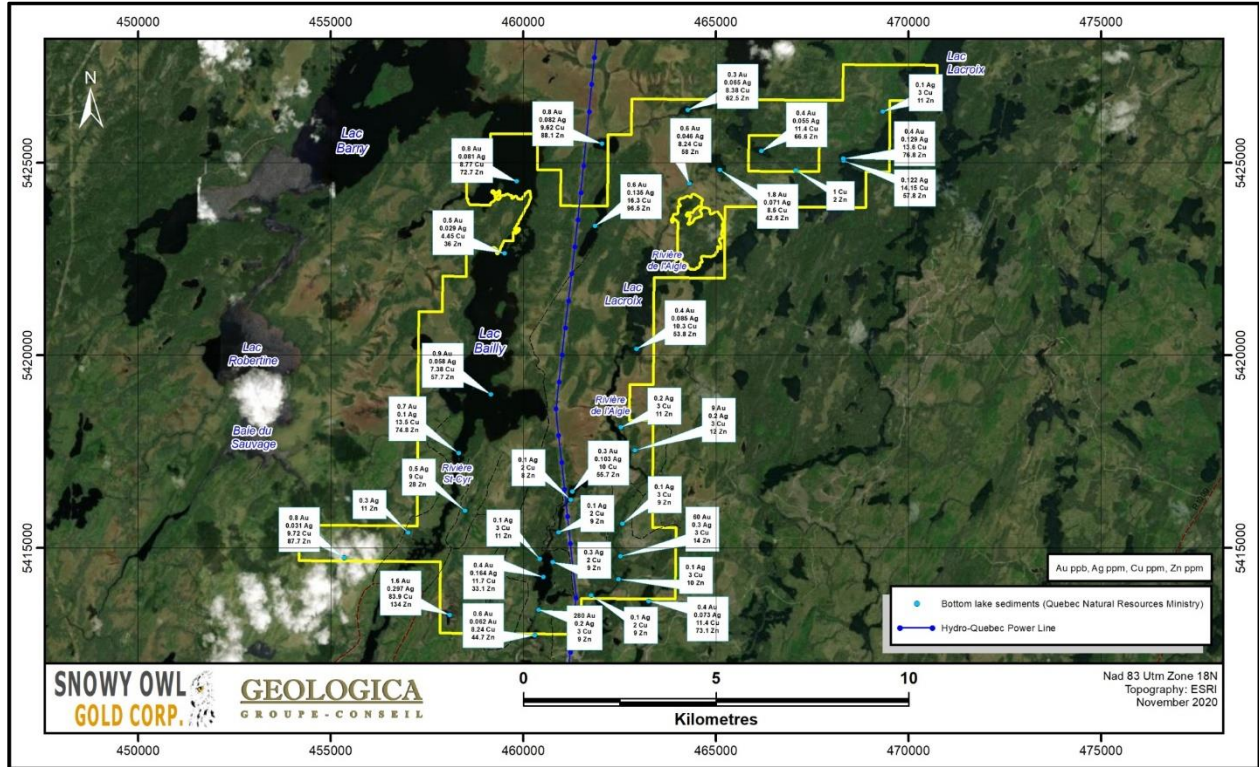


Figure 6 – Lake Bottom and Creek Sediments collected in the past by Quebec MERN

Geological Setting

Regional Geology

The Urban-Barry Belt is located in the SE portion of the Northern Volcanic Zone of the Abitibi Subprovince and is the host of several types of gold mineralization. Four (4) promising deposits are located in the area such as Windfall Lake and the Souart-Nubar Deposits of Osisko Mining and the Barry Gold and Gladiator Deposits owned by Bonterra (Figure 7).

The Belt is composed of imbricated structural blocks emplaced by NNW oriented thrusting. The age of the volcanic rocks that makes up the structural blocks increases progressively from the north (2707 Ma) to the south (2791 Ma). These units are cut by the EW to ENE-WSW direction faults on which an oblique thrust motion of the SE to NW occurs.

The main recognized volcanic units are, from NNW to SSE, the Urban, Macho, Chanceux, Lacroix and Fecteau Formations. The temporal succession of geodynamic settings inferred for these units suggests a relatively complete Wilson Cycle. The cycle comprises the formation of pre-Abitibi basement consisting of ancient volcanic rocks (Fecteau Formation, 2791 Ma), the opening of an ocean basin and the formation of oceanic crust with the periodic development of island arcs between 2730 and 2707 Ma and the closing and imbrication of this basin during the Kenoran Orogeny. The predominant mafic and intermediate volcanic rocks of the Fecteau Formation are the oldest sequences: They are comparable in age to certain greenstone belts of the Opatica Subprovince. The onset of rifting was marked by the eruption of komatiites (Lacroix Formation) and possibly by the intrusion of carbonatites (Lacroix carbonatite), suggesting the involvement of a mantle plume in the opening of the Northern Volcanic Zone. The younger units, ranging in age from 2727 to 2707 Ma, may represent the formation of island arcs on typical Northern Volcanic Zone oceanic crust.

The most recent studies completed by the Québec Ministry of Natural Resources (2006) permitted to subdivide the volcanic and sedimentary rocks in five (5) major lithostratigraphic units named Fecteau, Lacroix, Chanceux, Macho and Urban Formations. These units differ from each other by their age, their lithochemical signature, the presence of certain key facies such as glomeroporphyritic lavas or komatiites as well as the relative proportions of the various host lithologies.

The Fecteau Formation, which is the oldest unit of the Urban-Barry Belt, is mainly composed of 45% tholeiitic basalt, less than 1% of syn-volcanic gabbro, 40% tuffs of andesitic or andesitic-basaltic composition of transitional affinity, 15% felsic tuffs of dacitic composition or rhyolitic to calc-alkaline to transitional affinity and less than 1% sandstone sediments.

The Lacroix Formation consists of 8% komatiites, 90% komatiitic or tholeiitic glomeroporphyritic basalts and 2% calco-alkaline andesitic tuff to transitional.

The Chanceux Formation is mainly composed of greywackes, mudstones and tuffs. The greywackes, sometimes magnetite rich, are laminar or massive, often grano-classified and crossed laminated. Their chemical composition are similar to the mafic, intermediate and felsic volcanic rocks and are particularly abundant between the Barry and St-Cyr faults and to the southwest of the Chanceux Lake. These sediments are unfortunately not visible due to the high thickness of the overburden but were observed in diamond drill hole cores. The formation also contains thin, stratabound packages of aphyric or porphyritic basalt of tholeiitic affinity, syn-volcanic gabbro, rhyodacitic or rhyolitic tuffs of calc-alkaline affinity.

The Macho Formation consists of volcanic rocks, mainly mafic, located between the Milner fault to the north and the St-Cyr fault to the south. Most recent studies on the chemical rock compositions highlighted

the insular character of this unit which was not apparent in previous work. This Formation consists of 3% tholeiitic glomeroporphyritic basalt, 90% basalt, andesite, and basaltic-andesite of transitional arc islands affinity, 2% synvolcanic gabbro, and less than 1% felsic volcanics calc-alkaline, medium to fine sediments, massive sulphides and metasomatic rocks. The Macho Formation contains two separate lithostratigraphic units: the Windfall Member and the Rouleau Member, both established by Bandyayera et al. in 2002.

The Windfall Member, which andesitic rocks are originally located at the base, is now assigned to the Macho Formation. Within the Windfall Member, the following units are now recognized: Awin1 which consists of dacite, rhyodacite and calco-alkaline trachyandesite, Awin2 which consists of tuffs and tholeiitic felsic lavas, Awin3 which is a calc-alkaline subvolcanic, quartzo-feldspathic porphyry and tholeiitic Complex and Awin4, which includes porphyritic andesites of tholeiitic to transitional affinities, tholeiitic and andesitic tuffs and iron formations.

The Rouleau Member was mainly investigated using diamond drill hole core and is mainly composed of calc-alkaline to transitional andesitic or andesitic-basaltic composition lapilli to blocky tuffs and is locally interspersed by arc islands tholeiitic basalts or by ocean floor basalts as well as mudstones.

Of all the formations belonging to the Urban-Barry Belt, the Urban Formation is the largest, extending over 125 km from Lake Wilson (N.T.S. 32F01) to Lake Roy (N.T.S. 32G02). It consists of 95% tholeiitic glomeroporphyritic basalt followed by minor amounts of synvolcanic gabbro, felsic volcanics, and sediments.

The Urban Formation contains two important felsic members: The Novellet Member, dated at 2714 Ma, which includes rhyodacites and transitional rhyolites to Calc-Alkaline and Freeman Member, dated at 2707 Ma and consisting of rhyodacites and calc-alkaline rhyolites.

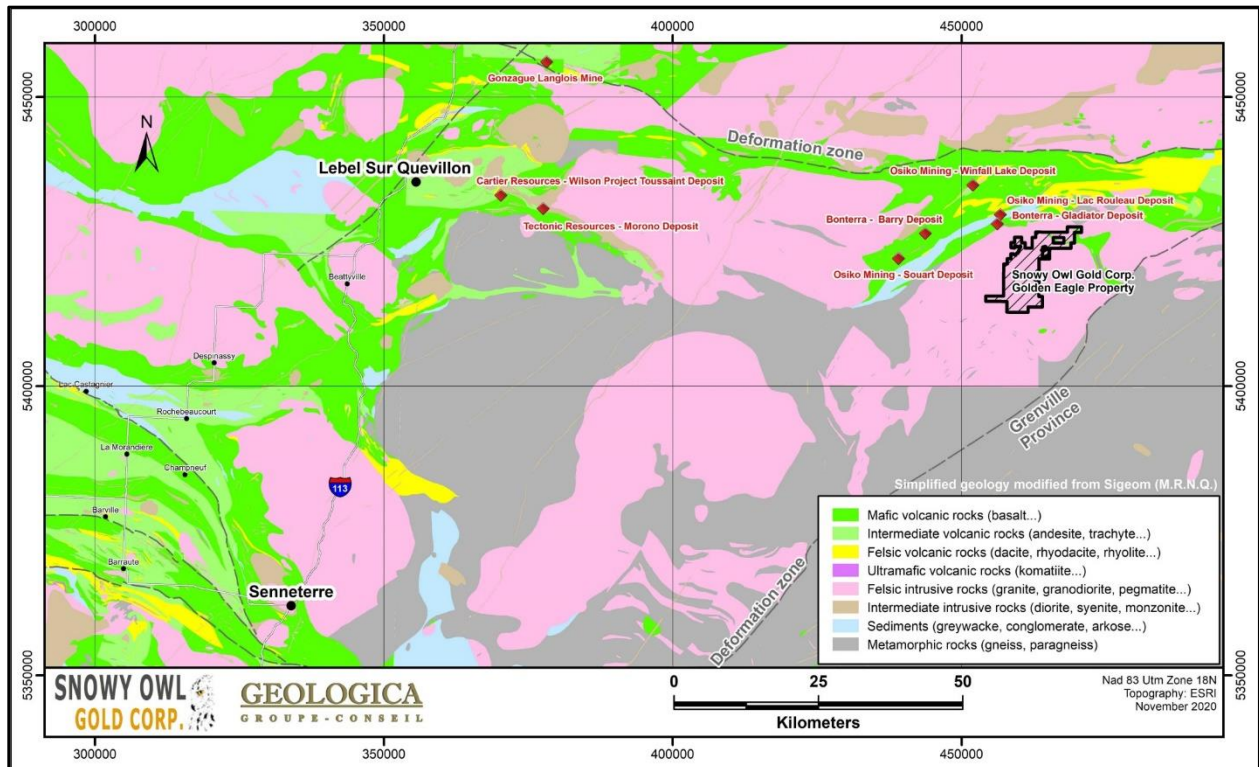


Figure 7 - Simplified Regional Geology

Property Geology

The Property geology mostly consists of strongly deformed, locally schistozed paragneisses and paraschists in the southern third of the Property. They are intruded by massive granodiorite and tonalite in the central and northern parts of the Property and tonalite with massive granodiorite in the northeast corner of the Property. Local mafic volcanic segments are located in the north-northeastern third of the Property and could be favourable lithostratigraphic host for precious and base metal mineralization. Another thin mafic volcanic enclave, which is oriented WNW-ESE, is located in the northeastern of the Property. In the south central part of the Property a small amphibolite enclave is present and oriented NE-SW (Figure 8).

The paragneisses are usually of medium grey to whitish grey on altered surfaces and dark grey on fresh breaks. They essentially consist of quartzo-feldspathic matrix with granoblastic texture. Biotite, amphibole and garnets are quite common minerals in the paragneiss unit.

The amphibolites are green on altered surfaces and greenish grey on fresh surfaces. They are strongly deformed and cross-cut by granite or pegmatite dykes.

The migmatized tonalitic gneiss contains 1-20% of granitic and/or pegmatitic composition and, some places, magnetite. The rock is greyish-white on the altered surface and whitish grey on fresh surfaces. This rock unit is strongly deformed with 2 to 10% folded amphibolite or diorite enclaves and exhibits a gneissic texture or foliation with schlierens rich in amphibole and biotite and well-developed quartz ribbons.

Structurally, the area is characterized by an important variation in the orientation of the foliations (mainly gneissic texture). Lithological assemblages are characterized by the development of an intense fabric oriented WNW-ESE in the northern part, N-S in the center part and, E-W to NW-SE in the southern part of the Property. These variations are interpreted as probably being due to structures in domes and basins.

Mineralization

No significant mineralization was recognized on the Property in the past. However, during the recent property visit on November 9, 2020, one of the Authors (Alain-Jean Beauregard) collected two samples. They were collected in a favourable lithostratigraphic mafic volcanic environment in the northeast part of the Property, on outcrops bordering the Lac Lacroix and Rivière de l'Aigle area previously prospected by the Quebec Ministry of Natural Resources. The first sample (V437869) consists of fine-grained basalt, locally chloritic and sheared, subvertical, with jointing parallel to schistosity. The second sample (V437870) consists of a rusty (15-20 cm) quartz-tourmaline-pyrite (1-2%) vein with subvertical dip oriented north-south hosted within massive basalt (Figure 9).

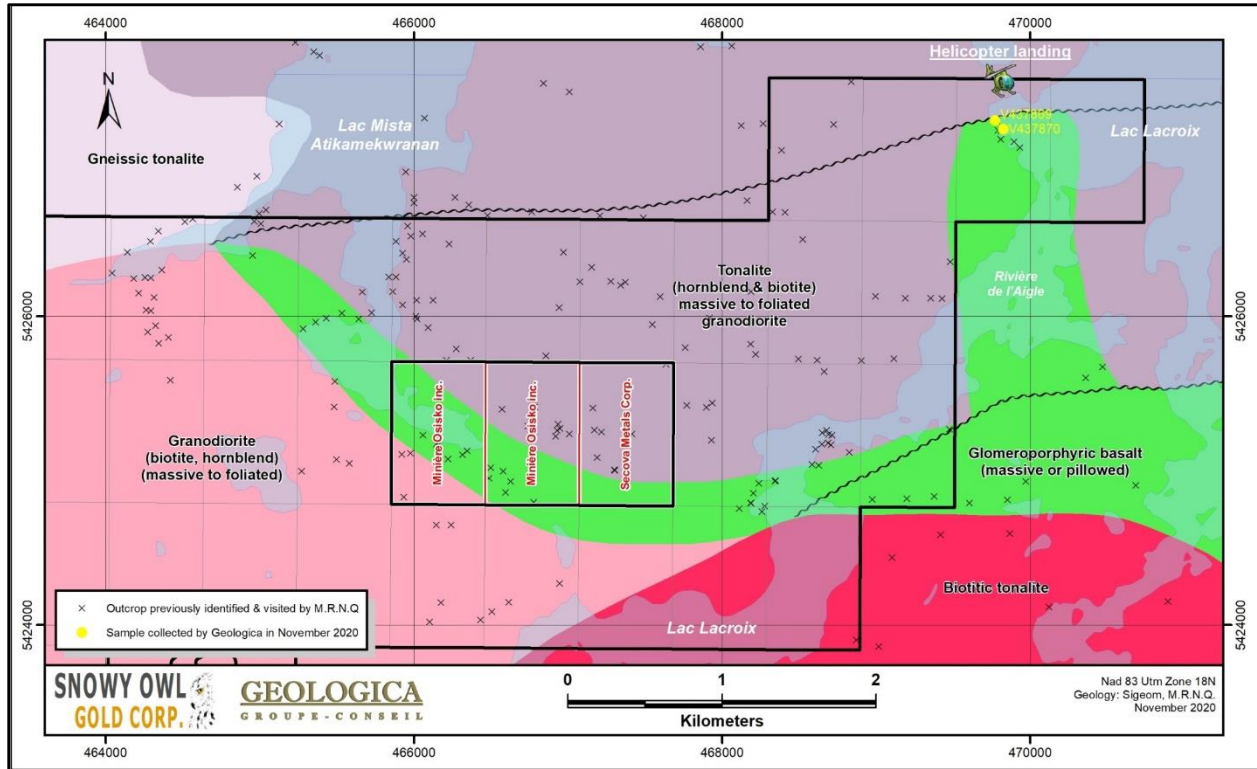


Figure 9 - Favourable Geological Area

Deposit types

Recent work by several exploration companies (Osisko Mining, Metanor Resources, Beaufield Resources, Bonterra Resources, etc.) has led to the recognition that an extensive band of felsic volcanic and volcanoclastic rocks occur in the central portion of the belt (including the Lac Rouleau area). Numerous gold, and minor base metal occurrences, lie along a prominent northeast trending feature which transects this area, including the Barry, Souart (Nubar) and Windfall gold deposits. Geological mapping, outcrop stripping, channel sampling and diamond drilling have identified felsic rocks along the entire trend.

The characteristics of the gold mineralization in the Urban-Barry area are similar to intrusion-related gold mineralization described as atypical greenstone-hosted deposits by Robert (2007). Although these atypical deposits display similar regional-scale controls and commonly occur in the same camps as orogenic deposits, they differ in styles of mineralization, metal association, interpreted crustal levels of emplacement, and relative age. Those gold deposits show a close spatial association with high level porphyry stocks and dykes.

Deposits of this group, typified by the Mother Lode and Grass Valley and including many important Precambrian examples, consist of quartz-carbonate veins in moderately to steeply dipping brittle-ductile shear zones and locally in related shallow-dipping extensional fractures. They are commonly distributed along major fault zones in deformed greenstone terranes of all ages. Veins have strike- and dip-lengths of 100 m to 1,000 m, sometimes locally but generally in complex vein networks. They are hosted by a wide variety of lithologies but there are district specific lithologic associations (Figure 10).

Generally, lode gold deposits (gold from bedrock sources) occur dominantly in terranes with an abundance of volcanic and clastic sedimentary rocks of a low to medium metamorphic grade (Poulsen, 1996).

Greenstone-hosted quartz-carbonate vein deposits are a subtype of lode-gold deposits (Poulsen et al., 2000). They correspond to structurally controlled, complex epigenetic deposits hosted in deformed metamorphosed terranes (Dubé and Gosselin, 2007).

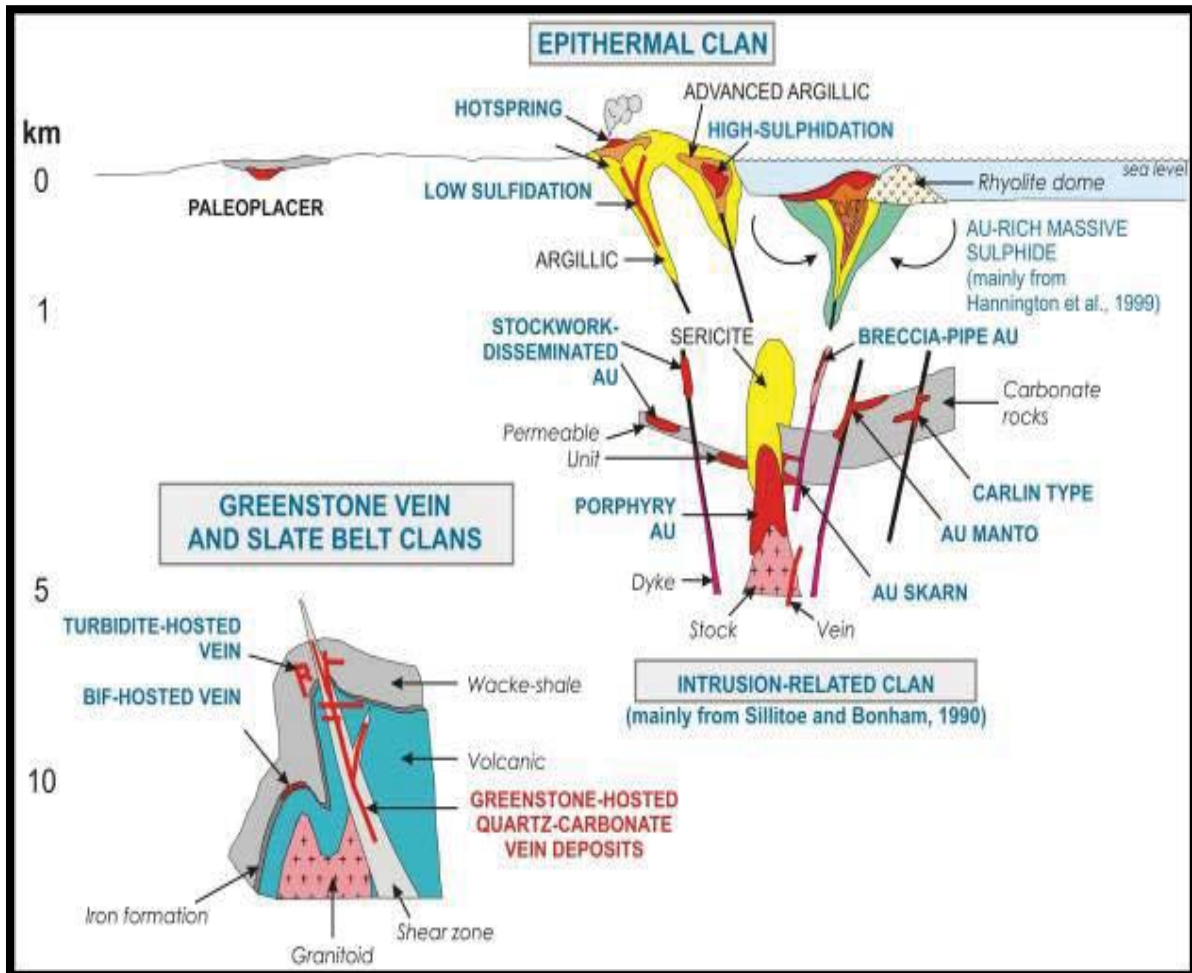


Figure 10 - Inferred Crustal Levels of Gold Deposition
Different Types of Lode Gold Deposits and the Inferred Deposit Clan
(From Dubé et al., 2001; Poulsen et al., 2000)

Greenstone-hosted quartz-carbonate vein deposits consist of simple to complex networks of gold-bearing, laminated quartz-carbonate fault-fill veins in moderately to steeply dipping, compressional brittle-ductile shear zones and faults with locally associated shallow-dipping extensional veins and hydrothermal breccias. They are hosted by greenschist to locally amphibolite facies metamorphic rocks of dominantly mafic composition and formed at intermediate depth in the crust (5-10 km). They are distributed along major compressional to tensional crustal-scale fault zones (Figure 11) in deformed greenstone terranes of all ages, but are more abundant and significant, in terms of total gold content, in Archean terranes. Greenstone-hosted quartz-carbonate veins are thought to represent a major component of the greenstone deposit clan (Dubé and Gosselin, 2007). They can coexist regionally with iron formation-hosted vein and disseminated deposits, as well as with turbiditic-hosted quartz-carbonate vein deposits.

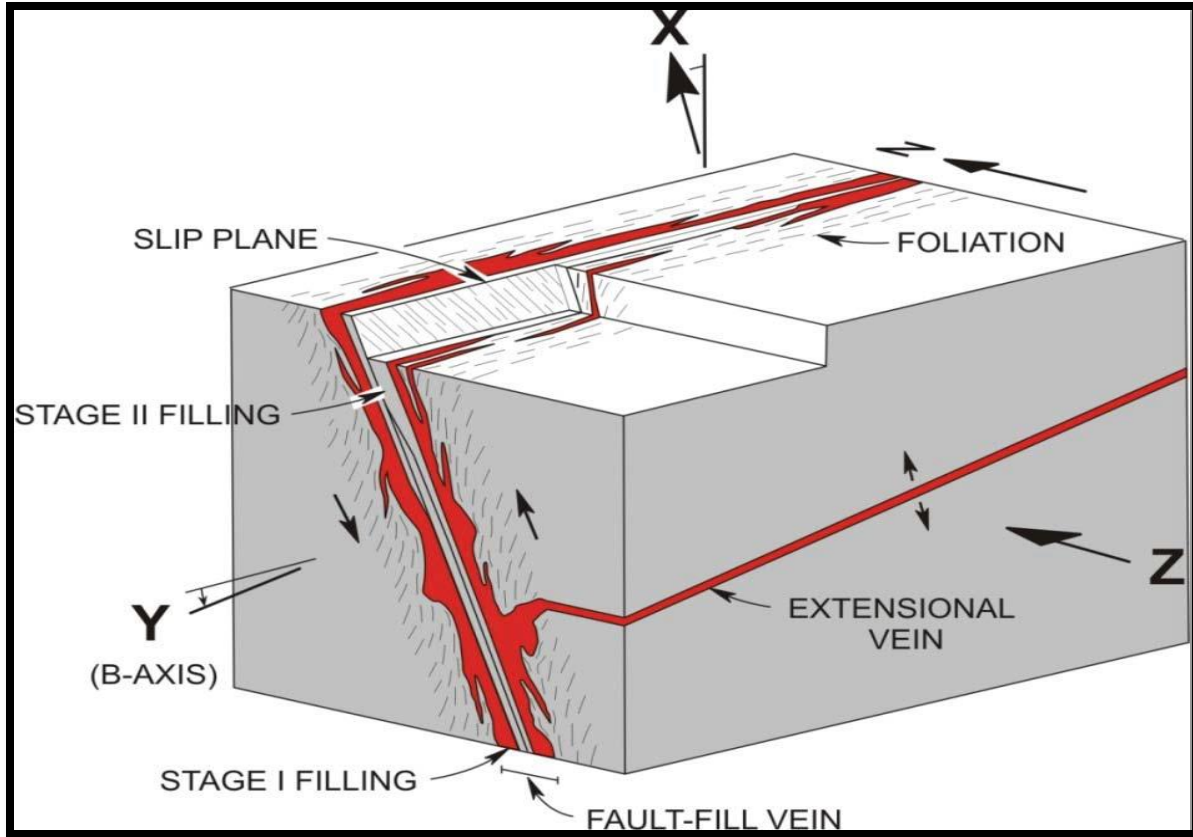


Figure 11 - Schematic Diagram of the Geometric Relationships Between the Structural Elements of Veins and Shear Zones and the Deposit-Scale Strain Axes (Robert, 1990)

Bandyayera, Th  berge and Fallara (Quebec, RG 2001-14) recognize five types of mineralization and deposit types in the area of the Property (Table 2).

Table 2 - Types of mineralization and deposit types in the Property Area

Gold Mineralization	Sub-Type	Deposit
Type 1 (Au rich VMS)	Associated with felsic volcanics	Osisko Mining (Windfall Lake Project)
	Associated with andesitic tuffs	
Type 2 (Cu-Au-Ag rich VMS)	Conjugated synvolcanic fractures filled with white quartz and local concentrations of Au rich chalcopyrite-pyrite sulphides	West macho showing, several showings on the Urban Township Property
	Chalcopyrite or disseminations	

Gold Mineralization	Sub-Type	Deposit
Type 3 (Au rich Volcanogenic Veins)	Pyrite-pyrrhotite veins, blobs carbonate-quartz-sericite-tourmaline- pyrite with chalcopyrite	Metanor Resources (Barry deposit)
	Quartz vein-sericite-tourmaline-pyrite- pyrrhotite-chalcopyrite	Alto showing
Type 4 (Au rich Shear Zones)	Locally rich ankerite and disseminated sulphides with quartz-albite- carbonates-tourmaline-fuschite and mafic to intermediate dykes	Beaufield Resources (Zone 18 Lac Rouleau Claim Block)
Type 5 (Au-Cu-Zn rich Metaplites)	Pyrite-Chalcopyrite-sphalerite-galena- pyrrhotite-arsenopyrite-magnetite disseminated and veinlets in an actinolite-chlorite-quartz matrix	Osisko Mining (Souart-Nubar Zone)

Exploration

In 2020, Snowy Owl commissioned Precision GeoSurveys Inc. to fly a high-resolution magnetic survey over the Golden Eagle Property (Figure 12).

The Golden Eagle survey block is centered approximately 190 km northeast of Val-d'Or, Quebec. A total of 1,033.9 line-km of gradient magnetic data was collected over an area of 91.7 km². The survey was flown at 100 m line spacing at a heading of 000°/180° normal to dominant geological structures; tie lines were flown at 1,000 m spacing at a heading of 090°/270°.

The Golden Eagle aeromagnetic survey data received from Precision is presented as digital databases, maps, and a logistics report. Precision GeoSurveys Inc. did not provide a data interpretation with their deliverables.

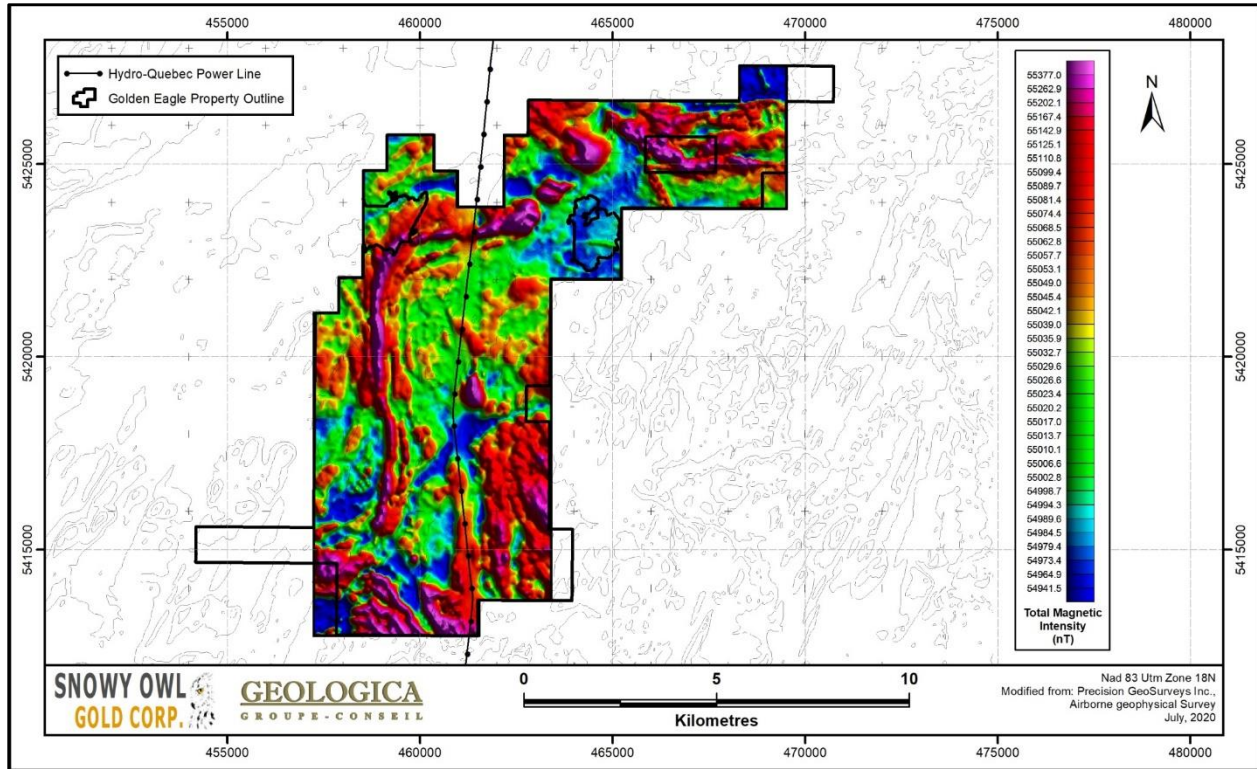


Figure 12 - July 2020 Airborne Geophysical Survey

Diamond Drilling

No diamond drilling was carried out by Snowy Owl Gold Corp. on the Golden Eagle Property.

Preparation, analysis and security

The Property visit and sampling was carried out by Geologica for the Company. The samples were carefully prepared and sent to ALS Minerals Laboratory in Val-d'Or (Quebec) for analysis.

Procedures for routine fire assaying are to initially crush the entire sample to – 10 mesh, then a 300 g sub-sample is split and pulverized to 95 % - 150 mesh, and a 30 g sub-sample is fire assayed using standard industry procedures, with the gold content determined by atomic absorption spectrometry. For gold (Au), each sample was assayed by Fire Assay and AA Finish, when values reporting ≥ 10 ppm Au are repeated by Fire Assay with a gravimetric Finish upper reporting limit of 100 g/t Au. Thirty-five (35) other elements were assayed by the Aqua Regia ICP-AES method.

For security and quality control, grab samples were catalogued on sample shipment memos, which were completed at the time samples, were being packed for shipment.

The Authors believe that the sample preparation, security and analytical procedures are correctly applied by the laboratory.

Data verification

The Authors have verified existing data of previous reports. Although the techniques were not described in the reports, data reported in assessment files, sampling and analysis appears to have been conducted with the norms and standards employed at that period and still valid to this day.

The Authors have reviewed all pertinent documents prepared by the Company and did not find elements not in line with current norms and standards.

The sampling or surveying approach, methods and procedures used by the Company or by its agents are considered to be appropriate, well done and conform to the mining standards of the industry.

The area within the agreement and the history of prior work on the Property is very significant over several decades and by numerous workers. Sampling of a few isolated outcrops would not be significant in relation to the size of the database and materially irrelevant.

During the recent property site visit by Geologica, on November 9, 2020, on key mineralization, visual observations and photos of the most significant altered and mineralized outcrops were taken. Two (2) grab samples were collected during the visit and sent to ALS Chemex in Val-d'Or for analysis under the supervision of one of the Authors, Alain-Jean Beauregard. No Standards, Blanks or Duplicates had been taken during this sampling. The complete laboratory assay results appear in Appendix II to the Technical Report but some results obtained are shown in table hereinbelow.

Table 3 - Samples collected by Geologica in November 2020

Sample No.	UTM Easting	UTM Northing	Au (ppm)	Ag (g/t)	Cu (ppm)	Zn (ppm)
V437869	469772	5427269	0.015	0.17	42.9	95
V437870	469825	5427213	<0.001	0.04	13.5	11

During this visit, one of the Authors, Alain-Jean Beauregard, completed a north-south flight over the Property. No material change to the cultural, scientific and technical information about the Property was observed. On the ground, photos of the helicopter landing and sites of collected samples were taken. Sample No. V437869 corresponds with fine grained basalt, locally chloritic and sheared, jointing parallel to schistosity, subvertical; sample V437870 is basalt hosting a north-south subvertical quartz-tourmaline vein (15-20 cm), 1-2% pyrite, rusty. These two samples were collected along the shoreline of Lacroix Lake.

Mineral processing and metallurgical testing

No mineral processing and metallurgical testing has yet been undertaken on the Property by the Company.

Mineral resource and mineral reserve estimates

No mineral resource and mineral reserve estimates have yet been undertaken on the Property by the Company.

Adjacent properties

The favorable mineral context of the Urban-Barry Belt has prompted many exploration companies and prospectors to stake claims in the area (Figure 14). North of the Property, two major mining holders (Osisko Mining and Bonterra Resources) hold four promising gold deposits; they are presented hereinbelow.

Osisko Mining - Windfall Lake Gold Deposit

The Windfall Lake Deposit, originally called the Alto Showing was discovered in the 1990's by Alto Minerals and Noront. The deposit which was acquired from Eagle Hill Exploration is located, by air, approximately 12 km NE of the Golden Eagle Property. The more recent (2018) NI 43-101 mineral resource estimate, prepared by Micon International Ltd. for Osisko, shows indicated mineral resources of 2.87 Mt @ 8.17 g/t Au for a total of 754,000 ounces of gold and inferred mineral resources of 10.35 Mt @ 7.11 g/t Au for a total of 2,366,000 ounces of gold (Press Release, November 27, 2018). (<https://www.osiskominig.com/news/osisko-releases-mineral-resource-update-for-lynx/>)

Bonterra Resources - Gladiator Gold Deposit (formerly Eastern Extension)

The Gladiator Gold Deposit is located, by air, approximately 4 km NW of the Property, which is at an early-stage exploration. It was discovered by drilling in 1990's by Abitex Resources of Val-d'Or, Quebec (Xemac Showing). The acquisition in 2010 of Urban-Barry Claim Block, previously held by North American Exploration and Lavoie property held by Mike Lavoie, permitted Bonterra to obtain a strategic position in the Urban-Barry mining camp providing access to the potential eastern and western extensions. The 2019 NI 43-101 Resource Estimates prepared by SGS shows indicated mineral resources of 743,000 tonnes @ 8.5 g/t Au (202,000 ounces of gold) and Inferred mineral resources of 3,065,000 tonnes @ 9.1 g/t Au (897,000 ounces of gold). (<http://btrgold.com/fr/projects/gite-gladiator/>)

Bonterra Resources – Barry Gold Deposit

The Barry Gold Deposit is located, by air, approximately, 15 km west of the Property and was discovered at the beginning of the 1990s by Murgor Resources following numerous prospecting, geological and geophysical surveys carried out by previous holders. Thereafter, an intense diamond drilling program permitted Murgor to better define the deposit. The property consists of one mining lease covering an area of 112.04 hectares which is surrounded by 179 claims covering an area of 8,075 hectares. A NI 43-101 updated Mineral Resource Estimate carried out by SGS in 2019 reported indicated mineral resources of 2.05 Mt @ 5.84 g/t Au (385,000 ounces of gold) and inferred mineral resources of 2.74 Mt @ 5.14 g/t Au (453,000 ounces) of gold). (<http://btrgold.com/projects/barry-deposit/>)

Osisko Mining – Souart (Nubar) Deposit

About 20 kilometres, by air to the east, Osisko also holds the former Key Gold Holding Souart Property now named Black Dog Project. Three zones have been defined by historical work on the property, including the Nubar Zone with historical estimated resources (that have not been prepared in accordance with NI 43-101) of 564,000 tonnes @ 6.2 g/t Au. (http://www.osiskominig.com/projects/urban_barry)

The resource estimate for the Souart Deposit, indicated above, is of a historical nature and is non-compliant with the new version of 43-101. However, the Authors believe that this information gives a conceptual indication of the potential of the area and that it is pertinent to the Technical Report. The Authors have been unable to verify the information and the information is not necessarily indicative of the mineralization on the Property that is the subject of the Technical Report.

Others

East and contiguous to the Golden Eagle Property, Secova Metals Corp. occupies a large property and Durango Resources inc. is contiguous to the NW (see Figure 14 herebelow).

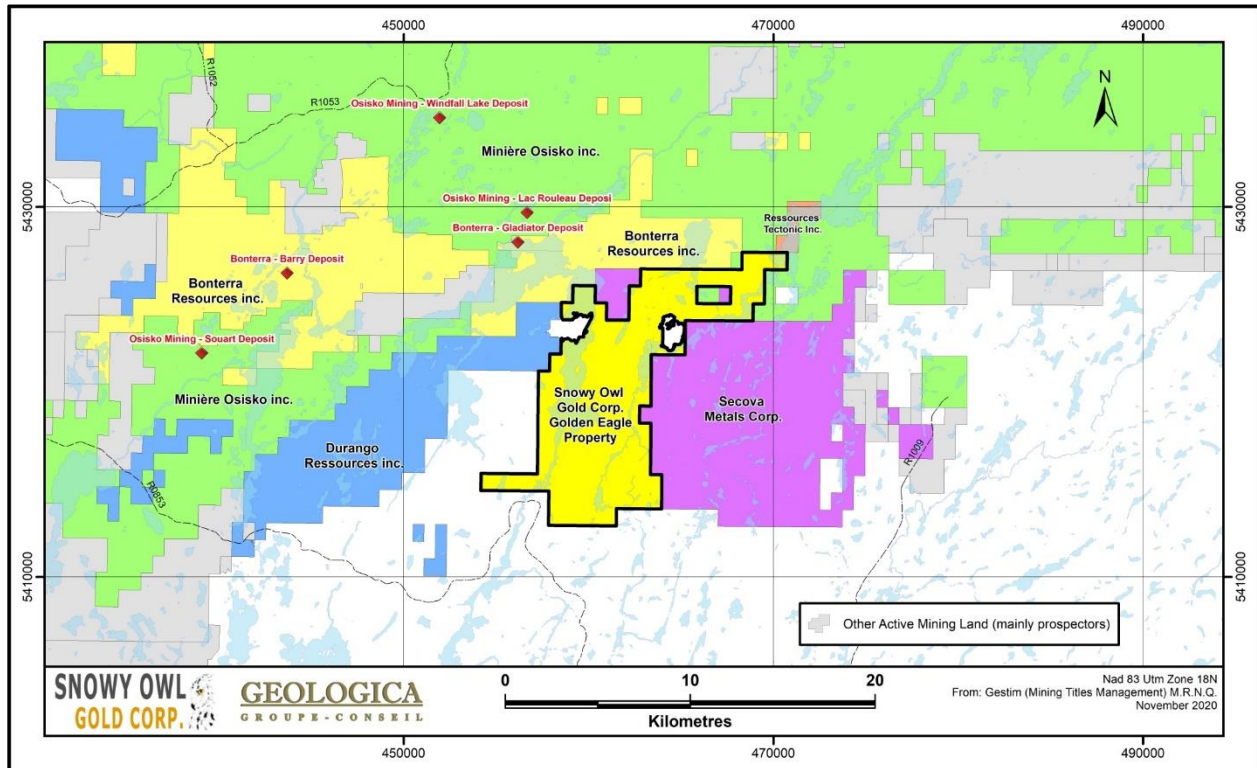


Figure 14 - Adjacent Properties

Other relevant data and information

No historical environment liabilities were found to exist on the Golden Eagle Property. In terms of permitting, the Company will have to obtain permits from competent authorities (Ministries or others) before carrying out fieldwork such as drilling, outcrop stripping, trenching, logging, trail opening etc.

Interpretation and conclusions

Based on the airborne magnetometer survey, several highly magnetic zones could correspond to mafic volcanics. These magnetic axes vary in orientation from NW-SE to N-S to E-W and will need to be visited with reconnaissance mapping and prospecting. Several structural features such as folds and faults of various orientations can be observed on the magnetic susceptibility map, which are suggestive of some tectonic activities and displacements.

There are favourable and potentially mineralized zones or veins in the host felsic to mafic volcanic units which were observed and mapped by the author (see sampled quartz-tourmaline-pyrite vein and photo by A.J. Beauregard) and by the MRNQ mapping.

Also, an anomalous value of gold (280 ppb Au) was obtained within a creek sediment sample in the south part of the Property where immediately to the east an outcrop of altered gneiss with a quartz vein with iron

oxides was identified by the Ministry during a reconnaissance mapping program in 2000 along secondary logging road.

Recommendations

Based on the recent and past results obtained on the Property, Geologica recommends an exploration program in two phases:

PHASE 1: Surface Exploration Work

In Phase 1, a reconnaissance mapping, prospecting, beep mat surveying and sampling on the favourable volcanic segments and amphibolitic enclaves as well as on selected structural features such as fault junctions and folds, and provision of 40 line-km IP-Resistivity survey at \$2,500 per line-km on selected priority anomalous areas such as mag structural features coincident with surface favourable geological targets are recommended. Since access to the northern part of the Property is difficult, a provision of 10 days of helicopter service at \$5,500 per day for three (3) hours minimum per day will be required (including fuel, room and board for the pilot and his mechanical assistant).

2 geologists, 2 assistant geologists, including room and board, salaries and transport (pick up truck, boat).

25 days @ \$4,000/day for 4 employees	\$100,000
---------------------------------------	-----------

IP-Resistivity survey

40 line-km @ \$2,500 per line-km	\$100,000
----------------------------------	-----------

Provision of helicopter 10 days at \$5,500/day	\$55,000
--	----------

Supervision, Administration and Contingencies (15%):	\$38,250
--	----------

<u>Total Phase 1:</u>	<u>\$293,250</u>
-----------------------	------------------

PHASE 2: (If warranted by Phase 1 significant results)

In Phase 2, a provision of 5,000 meters of drilling to validate best geological and geophysical results obtained in Phase 1, if warranted.

Diamond drilling (BQ Size)

5,000m @ \$200/m (all included)	\$1,000,000
---------------------------------	-------------

Management and Contingencies (15%)	\$150,000
------------------------------------	-----------

<u>Total Phase 2:</u>	<u>\$1,150,000</u>
-----------------------	--------------------

<u>Total Phases 1 and 2:</u>	<u>\$1,443,250</u>
------------------------------	--------------------

USE OF AVAILABLE FUNDS

Funds Available and Principal Purposes

It is anticipated that the Company will have available funds of approximately \$782,116, based on the current assets and cash position as of December 31, 2020, representing a working capital position of \$669,382. The Company's working capital position increased since August 31, 2020, the most recent interim period, as a result of the closing of the December 2020 Private Placement. Upon the Listing, the principal purposes for the foregoing available funds are anticipated to be as follows:

Principal Purposes	Funds (\$)
General and administrative costs ⁽¹⁾	150,000
Phase 1 exploration program expenditures on the Property ⁽²⁾	293,250
Balance of estimated expenses for listing on the CSE	49,350
Payment of outstanding liabilities	112,734
Total use of available funds	605,334
Unallocated funds (unaudited)	176,782

Notes:

(1) This figure is for a forecasted period of 12 months and is comprised of: (i) \$24,000 of consulting fees to the CEO and CFO (\$12,000 each); (ii) \$66,000 of office and administrative costs, including office space use, office services and filing fees; and (iii) \$60,000 of professional fees, including accounting, audit and legal fees.

(2) See "The Property –Proposed Budget". This figure is the recommended budget for Phase 1. As at the date of this Prospectus, the Company has incurred a total of \$84,000 in qualified expenditures on the Property, which are in addition to and do not form part of the recommended budget for Phase 1.

It is anticipated that the Company will have sufficient cash available upon Listing to execute its business plan and to pay its operating and administrative costs for at least twelve months after the completion of the Listing.

Unallocated funds will be deposited in the Company's bank account and added to the working capital of the Company. The CFO of the Company will be responsible for the supervision of all financial assets of the Company. Based on the Company's cash flow requirements, management will determine the appropriate level of liquidity required for operations and will draw down such funds as necessary.

There may be circumstances, where for business reasons, a reallocation of funds may be necessary in order for the Company to achieve its stated business objectives.

The Company had negative cash flow from operating activities for the financial year ended May 31, 2020. Company cannot guarantee it will have a cash flow positive status from operating activities in future periods. As a result, the Company continues to rely on the issuance of securities or other sources of financing to generate sufficient funds to fund its working capital requirements and for corporate expenditures. The Company may continue to have negative cash flow from operating activities until sufficient levels of sales are achieved. To the extent that the Company has negative cash flow from operating activities in future periods, the Company may need to use a portion of proceeds from any offering to fund such negative cash flow. See "*Risk Factors –Negative Cash Flow*".

Business Objectives and Milestones

The Company completed an airborne high resolution magnetic survey over the Property in the summer of 2020. The Company's sole intended business objective and milestone following the Listing is to complete the Phase 1 recommended exploration program on the Property, as described herein. The Company intends to complete the foregoing business objective in the forthcoming 12 month period. The Company intends to spend a significant portion of the funds available to it for exploration on the Property, as stated in this Prospectus. There may be circumstances however, where, for sound business reasons, a reallocation of funds may be necessary. In addition, Phase 2 of the recommended exploration program on the Property will only be undertaken (i) if warranted by the results obtained from Phase 1 and (ii) if the Company is able to secure additional financing to cover the estimated cost of such program. Management believes that it will be able to secure such additional financing if the results of Phase 1 identify promising drill targets.

The junior mining industry has been significantly affected by the COVID-19 pandemic in that certain exploration companies, such as the Company, were unable to access or conduct operations on their projects in late winter and early spring of 2020. The Property is located in the Province of Québec and the government of Québec required that all mining issuers scale down operations to a minimum in its initial directive on March 23, 2020. However, on April 13, 2020, the provincial government reversed course and allowed mining operations in the province to resume, subject to compliance with health and safety orders and recommendations. Accordingly, the Company was able to arrange and complete an airborne high resolution magnetic survey over the Property in the summer of 2020. In addition, the MERN took unprecedented measures to extend all mineral claims from April 9, 2020 onward for a period of 12 months as a direct result of travel restrictions put in place to prevent the spread of the COVID-19 virus. These measures will allow title holders, such as the Company, to have additional time to carry out required assessment work on their mining claims to keep them in good standing. Notwithstanding the foregoing, management has strong relationships with Québec based exploration service providers and does not anticipate any material delays in executing Phase 1 of the exploration program because of COVID-19.

DIVIDENDS OR DISTRIBUTIONS

Dividends

The Company has neither declared nor paid any dividends on its Common Shares. The Company intends to retain its earnings to finance growth and expand its operations and does not anticipate paying any dividends on its Common Shares in the foreseeable future.

SELECTED FINANCIAL INFORMATION AND MANAGEMENT'S DISCUSSION AND ANALYSIS

Selected Financial Information

The following selected financial information has been derived from and is qualified in its entirety by the financial statements of the Company for the period from incorporation to May 31, 2019 (audited), annual financial statements of the Company for the years ended May 31, 2020 (audited), financial statements of the Company for the three months ended August 31, 2020 (unaudited) and notes thereto included in this Prospectus, and should be read in conjunction with such financial statements and the related notes thereto included in Schedule A of this Prospectus. All financial statements of the Company are prepared in accordance with International Financial Reporting Standards. All amounts referred to as being derived from the financial statements of the Company are denoted in Canadian Dollars.

	As at and for the three months ended August 31, 2020 (unaudited) (\$)	As at and for the year ended May 31, 2020 (audited) (\$)	As at and for the period from incorporation to May 31, 2019 (audited) (\$)
Total Assets	\$909,973	\$444,551	\$73,466
Total Liabilities	\$141,966	\$42,632	-
Total Equity	\$768,007	\$401,919	\$73,466
Revenue	-	-	-
Net Loss and Comprehensive Loss for the Period	\$73,114	\$46,547	\$6,907

As an exploration stage company, the Company has not generated revenue from its property interest and does not anticipate it will do so for the foreseeable future. The Company has recently acquired the Property and Management anticipates that expenses related to mineral exploration and administration of the Company will materially increase following closing of the Listing. Management anticipates that such expenses will include increased exploration expenditures with respect to the Property and increased professional fees, and other costs associated with compliance with applicable securities laws following closing of the Listing.

Management's Discussion and Analysis

The MD&A of the Company from the date of incorporation (November 9, 2018) to May 31, 2019, and for the fiscal year ended May 31, 2020 is as follows.

As reflected in the Company's financial statements, the Company has not carried on any active business other than: (i) the raising of funds for the purpose of identifying and evaluating assets, properties or businesses with a view to acquiring or participating therein; and (ii) the review and analysis of various business opportunities. As such, its principal asset is cash, and its expenses are primarily for costs of raising capital, professional fees, and investigating business opportunities.

For the year ended May 31, 2020, the Company reported a loss of \$46,547 compared to a loss of \$6,907 for the period from incorporation on November 9, 2018 to May 31, 2019. The Company's loss per share was \$0.02 (2019 - \$0.00).

The significant expenses incurred were as follows:

- \$1,575 (2019- \$1,907) of general and administrative costs. These costs included administrative fees of \$1,575 (2019 - \$nil); and promotion and marketing costs of \$nil (2019 - \$1,907); and
- \$44,972 (2019 - \$5,000) of professional fees comprised of \$7,500 (2019 - \$nil) for accounting and audit fees, and \$37,472 (2019 - \$5,000) incurred for legal fees.

The MD&A of the Company for the three months ended August 31, 2020 and for the three months ended August 31, 2019 is as follows.

For the three months ended August 31, 2020, the Company reported a loss of \$73,114 compared to a loss of \$525 for the three months ended August 31, 2019, The Company's loss per share was \$0.00 (2019 - \$0.00).

During the three months ended August 31, 2020 the Company undertook an airborne magnetic geophysical survey over the Property at a cost of \$84,000.

The Company incurred \$48,186 of professional fees, which fees were incurred as part of the Company's effort to list the Company on the CSE. The Company also incurred \$24,900 of share-based payments as a result of the grant of stock options to its management and board of directors during the period. The Company was relatively inactive in the three months ended August 31, 2019.

Financial Condition, Liquidity and Capital Resources

The Company's working capital position at May 31, 2020 was \$76,919 compared to \$73,466 at May 31, 2019. The Company's working capital position at August 31, 2020 was \$354,007. Working capital increased at August 31, 2020 due to the proceeds raised in the 2020 Private Placement, partially offset by expenditures on the Property between June 1 and August 31, 2020.

The Company received \$50,000 in share subscriptions, pursuant to the 2020 Private Placement that closed June 25, 2020, during the year ended May 31, 2020. During the period from incorporation on November 9, 2018 to May 31, 2019, the Company received \$33,250 for the issuance of 665,000 Special Warrants at a price of \$0.05 per Special Warrant, and the Company issued 2,000,000 Common Shares for cash proceeds of \$45,000 and legal services provided of \$5,000.

On June 25, 2020, the Company completed the 2020 Private Placement of: (i) 7,000,000 Units at a price of \$0.05 per Unit; and (ii) 3,250,000 FT Shares at a price of \$0.05 per FT Share, for aggregate gross proceeds of \$512,500. Each Unit consists of (i) one Common Share and (ii) one-half of one Warrant. Each Warrant entitles the holder thereof to acquire one Warrant Share a price of \$0.10 per Warrant Share until June 25, 2022. In connection with the 2020 Private Placement, the Company paid finder's fees to registered dealers totalling \$36,600 and issued an aggregate of 364,000 Finder Warrants and 372,000 Finder Shares.

On December 15, 2020, the Company completed the December 2020 Private Placement of: (i) 5,300,000 December Units at a price of \$0.05 per December Unit; and (ii) 1,970,000 December FT Share at a price of \$0.05 per December FT Share, for aggregate gross proceeds of \$363,500. Each December Unit consists of (i) one Common Share and (ii) one-half of one December Warrant. Each December Warrant entitles the holder thereof to acquire one December Warrant Share at a price of \$0.10 per Warrant Share until December 15, 2022. In connection with the December 2020 Private Placement, the Company issued an aggregate of 564,000 December Finder Warrants and 564,000 December Finder Shares to registered dealers. All of the securities issued in connection with the December 2020 Private Placement are subject to a statutory hold period. The Company did not pay any cash finder's fees in connection with the December 2020 Private Placement.

The Company did not pursue any financing activities during the three months ended August 31, 2019.

Risk Management and Financial Risks

Capital Management

The Company's capital currently consists of common shares and special warrants and its principal source of cash is from the issuance of common shares and special warrants. The Company's capital management objectives are to safeguard its ability to continue as a going concern and to have sufficient capital to be able to acquire and explore mineral property assets. The Company does not have any externally imposed capital

requirements to which it is subject. The Company manages the capital structure and makes adjustments to it in light of changes in economic conditions and the risk characteristics of the underlying assets. To maintain or adjust the capital structure, the Company may attempt to issue new shares or special warrants.

As the Company's mineral property is in the exploration stage, the Company is dependent on external financing to fund its activities. In order to carry out its operations, the Company will spend its existing working capital and raise additional amounts as needed.

Financial Risks

The Company's risk exposures and the impact on its financial instruments are summarized below:

Liquidity Risk

The Company's approach to managing liquidity risk is to ensure that it will have sufficient liquidity to meet liabilities when due. As at May 31, 2020, the Company had current assets of \$119,551 (May 31, 2019 - \$73,466) to settle current liabilities of \$42,632 (May 31, 2019 - \$nil). As at August 31, 2020, the Company had current assets of \$495,973 to settle current liabilities of \$141,966.

Credit Risk

Credit risk is the risk that one party to a financial instrument will cause a financial loss for the other party by failing to discharge an obligation. The Company's cash is exposed to credit risk, with the carrying value being the Company's maximum exposure. The Company's cash consists of funds held in trust with the Company's corporate lawyer. Management believes the Company's exposure to credit risk is minimal.

The MD&A of the Company should be read in conjunction with the respective financial statements and the accompanying notes thereto included in this Prospectus. Certain information contained in the MD&A constitutes forward-looking statements. These statements relate to future events or to our future financial performance and involve known and unknown risks, uncertainties and other factors that may cause our actual results, levels of activity, performance or achievements to be materially different from any future results, levels of activity, performance or achievements expressed or implied by such forward looking statements. See "Forward-Looking Information" and "Risk Factors".

COVID-19

During the first quarter of 2020, there was a global outbreak of a novel coronavirus identified as "COVID-19". On March 11, 2020, the World Health Organization declared a global pandemic. In order to combat the spread of COVID-19, governments worldwide have enacted emergency measures including travel bans, legally enforced or self-imposed quarantine periods, social distancing and business and organization closures. These measures have caused material disruptions to businesses, governments and other organizations resulting in an economic slowdown and increased volatility in national and global equity and commodity markets.

Central banks and governments, including Canadian federal and provincial governments, have reacted with significant monetary and fiscal interventions designed to stabilize economic conditions. The duration and impact of the COVID-19 outbreak is unknown at this time, as is the efficacy of any interventions. It is not possible to reliably estimate the length and severity of these developments and the impact on the financial results and condition of the Company and its operations in future periods.

The junior mining industry has been significantly affected by the COVID-19 pandemic in that certain exploration companies, such as the Company, were unable to access or conduct operations on their projects in late winter and early spring of 2020. The Property is located in the Province of Québec and the

government of Québec required that all mining issuers scale down operations to a minimum in its initial directive on March 23, 2020. However, on April 13, 2020, the provincial government reversed course and allowed mining operations in the province to resume, subject to compliance with health and safety orders and recommendations. Accordingly, the Company was able to arrange and complete an airborne high resolution magnetic survey over the Property in the summer of 2020. In addition, the MERN took unprecedented measures to extend all mineral claims from April 9, 2020 onward for a period of 12 months as a direct result of travel restrictions put in place to prevent the spread of the COVID-19 virus. These measures will allow title holders, such as the Company, to have additional time to carry out required assessment work on their mining claims to keep them in good standing. Notwithstanding the foregoing, management has strong relationships with Québec based exploration service providers and does not anticipate any material delays in executing Phase 1 of the exploration program because of COVID-19.

Related Party Transactions

During the year ended May 31, 2020 and for the period from incorporation on November 9, 2018 to May 31, 2019, key management personnel did not receive any short-term employee benefits from the Company. Also, key management personnel were not paid post-employment benefits, termination benefits, or other long-term benefits during these periods.

During the year ended May 31, 2020, the Company incurred \$1,575 (2019 - \$nil) of administrative fees to Elyssian Management Ltd., a company related to Mr. David Patterson, a director of the Company.

During the year ended May 31, 2020, the Company issued 1,500,000 common shares at a price of \$0.05 per share to Mr. David Patterson, a director of the Company, in exchange for mineral claims. At the time of the transaction, Mr. Patterson was acting at arm's length since he had not yet been appointed to the board of directors of the Company.

During the three months ended August 31, 2020, the Company granted 1,000,000 stock options to officers and directors of the Company. Each stock option is exercisable to acquire one common share at an exercise price of \$0.10 expiring June 4, 2025. The stock options vested immediately upon grant.

DESCRIPTION OF SECURITIES

Common Shares

The Company's authorized capital consists of an unlimited number of Common Shares and an unlimited number of preferred shares, of which only 26,956,000 Common Shares are issued and outstanding as at the date of this Prospectus as fully paid and non-assessable. Holders of the Common Shares are entitled to vote at all meetings of the holders of the Common Shares, to receive any dividend declared by the Company and, subject to the rights of holders of any shares ranking in priority to or on a parity with the Common Shares, to participate rateably in any distribution of our property or assets upon liquidation or wind-up.

The Board is authorized to issue additional Common Shares on such terms and conditions and for such consideration as the Board may deem appropriate without further security holder action.

Special Warrants

On April 19, 2019, the Company closed the Special Warrant Private Placement and issued 815,000 Special Warrants. As of the Special Warrant Exercise Date, the Special Warrants will automatically convert into Special Warrant Shares, pursuant to the automatic conversion provision of the Special Warrants.

Upon conversion of the Special Warrants into Special Warrant Shares, holders are entitled to vote at all meetings of the holders of Common Shares and, subject to the rights of holders of any shares ranking in

priority to or on a parity with the Common Shares, to participate rateably in any distribution of the Company's property or assets upon liquidation or winding-up.

Warrants

On June 25, 2020, the Company completed the 2020 Private Placement and issued 3,500,000 Warrants. Each Warrant entitles the holder thereof to acquire one Warrant Share, at an exercise price of \$0.10 per share, until June 25, 2022.

Upon conversion of the Warrants into Warrant Shares, holders are entitled to vote at all meetings of the holders of Common Shares and, subject to the rights of holders of any shares ranking in priority to or on a parity with the Common Shares, to participate rateably in any distribution of the Company's property or assets upon liquidation or winding-up.

In connection with the closing of the 2020 Private Placement, the Company issued 364,000 Finder Warrants to registered dealers in connection with the closing of the 2020 Private Placement. Each Finder Warrant entitles the holder thereof to acquire one Common Share, at an exercise price of \$0.10 per share, until June 25, 2022.

On December 15, 2020, the Company completed the December 2020 Private Placement and issued 2,650,000 December Warrants. Each December Warrant entitles the holder thereof to acquire one December Warrant Share, at an exercise price of \$0.10 per share, until December 15, 2022.

Upon conversion of the December Warrants into December Warrant Shares, holders are entitled to vote at all meetings of the holders of Common Shares and, subject to the rights of holders of any shares ranking in priority to or on a parity with the Common Shares, to participate rateably in any distribution of the Company's property or assets upon liquidation or winding-up.

In connection with the closing of the December 2020 Private Placement, the Company issued 564,000 December Finder Warrants to registered dealers in connection with the closing of the December 2020 Private Placement. Each December Finder Warrant entitles the holder thereof to acquire one Common Share, at an exercise price of \$0.10 per share, until December 15, 2022.

Options

The Board has approved an Option Plan, designed for selected employees, officers, directors, consultants and contractors, to incentivize such individuals to contribute toward our long-term goals, and to encourage such individuals to acquire Common Shares as long-term investments. The Option Plan is administered by the Board and 1,000,000 Options are currently outstanding, with each Option convertible into a Common Share of the Company at a price of \$0.10 per Common Share. The terms of any award are determined by the Board, provided that no options may be granted with an exercise price lower than the greater of the closing market prices of the Common Shares on (a) the trading day prior to the date of grant of the stock options, and (b) the date of grant of the stock options. As of the date of this Prospectus, there are 1,000,000 outstanding options to purchase Common Shares under the Option Plan. See "Options to Purchase Securities".

CONSOLIDATED CAPITALIZATION

The following table sets out the share capitalization of the Company as at the dates specified below.

Description	Authorized	Outstanding as at May 31, 2019 ⁽¹⁾⁽²⁾	Outstanding as at May 31, 2020 ⁽¹⁾⁽²⁾	Outstanding as at August 31, 2020 ⁽¹⁾⁽²⁾	Outstanding as at the date of this Prospectus ⁽¹⁾⁽²⁾
Common Shares	Unlimited	2,000,000	8,500,000	19,122,000	26,956,000
Preferred Shares	Unlimited	Nil	Nil	Nil	Nil

Notes:

- (1) See "Prior Sales".
(2) On an undiluted basis.

Fully Diluted Share Capitalization

Common Shares	Amount of Securities	Percentage of Total
Issued and outstanding as at the date of this Prospectus	26,956,000	75.19%
Common Shares reserved for issuance upon conversion of Special Warrants	815,000	2.27%
Common Shares reserved for issuance upon exercise of Warrants and December Warrants	6,150,000	17.16%
Common Shares reserved for issuance upon exercise of Finder Warrants and December Finder Warrants	928,000	2.59%
Common Shares reserved for issuance upon exercise of Options	1,000,000	2.79%
Total Fully Diluted Share Capitalization after the Listing	35,849,000	100%

OPTIONS TO PURCHASE SECURITIES

Outstanding Options

The following table sets out information about the Options issued and outstanding pursuant to the Option Plan as of the date hereof:

Name of Optionee	Designation of Securities under Option	Number of Common Shares under Option	Exercise Price	Expiry Date
All executive officers and past executive officers as a group (4 people)	Common Shares	1,000,000	\$0.10	June 4, 2025

Option Plan

The Option Plan was adopted by the Board on June 4, 2020. The purpose of the Option Plan is to advance the interests of the Company and its shareholders by attracting, retaining and motivating the performance of selected directors, officers, employees or consultants of the Company of high caliber and potential and to encourage and enable such persons to acquire and retain a proprietary interest in the Company by

ownership of its Common Shares. The Option Plan provides that, subject to the requirements of the Exchange, the aggregate number of securities reserved for issuance, set aside and made available for issuance under the Option Plan may not exceed 10% of the number of Common Shares of the Company issued and outstanding from time to time.

The Option Plan will be administered by the Board or a committee of the Board, either of which will have full and final authority with respect to the granting of all Options thereunder. Options may be granted under the Option Plan to such directors, officers, employees or consultants of the Company, as the Board may from time to time designate.

The exercise price of any Options granted under the Option Plan shall be determined by the Board, but may not have an exercise price lower than the greater of the closing market prices of the underlying securities on (a) the trading day prior to the date of grant of the Options; and (b) the date of grant of the Options. The term of any Options granted under the Option Plan shall be determined by the Board at the time of grant but, subject to earlier termination in the event of termination or in the event of death, the term of any Options granted under the Option Plan may not exceed ten years. Options granted under the Option Plan are not to be transferable or assignable. Subject to certain exceptions, in the event that a director or officer ceases to hold office, options granted to such director or officer under the Option Plan will expire 60 days after such director or officer ceases to hold office. Subject to certain exceptions, in the event that an employee, or consultant ceases to act in that capacity in relation to the Company, Options granted to such employee, consultant or management company employee under the Option Plan will expire 60 days after such individual or entity ceases to act in that capacity in relation to the Company.

PRIOR SALES

The following table summarizes the issuance of Common Shares of the Company in the 12 months prior to the date of this Prospectus:

Date of Issue	Price per Security	Number of Securities
December 15, 2020	\$0.05	5,300,000 Units (comprised of 5,300,000 Common Shares and 2,650,000 December Warrants)
December 15, 2020	\$0.05	1,970,000 December FT Shares
December 15, 2020	\$0.05	564,000 December Finder Shares
June 25, 2020	\$0.05	7,000,000 Units (comprised of 7,000,000 Common Shares and 3,500,000 Warrants)
June 25, 2020	\$0.05	3,250,000 FT Shares
June 25, 2020	\$0.05	372,000 Finder Shares
April 17, 2020	\$0.05	6,500,000 Common Shares

ESCROWED SECURITIES AND SECURITIES SUBJECT TO CONTRACTUAL RESTRICTION ON TRANSFER

As at the date of this Prospectus, the Common Shares subject to contractual restriction and escrow are as shown in the following table:

Name	Designation of class	Number of securities held in escrow or that are subject to a contractual restriction on transfer ⁽¹⁾	Percentage of class ⁽²⁾
Solomon Elimimian	Common Shares	260,000	0.96%
Raymond Wladichuk	Common Shares	100,000 ⁽³⁾	0.37%
David Patterson	Common Shares	1,500,000 ⁽⁴⁾	5.56%

Notes:

- (1) These Common Shares are held under the Escrow Agreements in accordance with NP 46-201. The escrow agent is Endeavor Trust Corporation.
- (2) Based on 26,956,000 Common Shares issued and outstanding as at the date of this Prospectus.
- (3) Mr. Wladichuk also holds 2,500 Special Warrants.
- (4) Mr. Patterson also holds 30,000 Special Warrants.

Escrow Agreements

NP 46-201 provides that all shares of an issuer owned or controlled by its Principals will be escrowed at the time of the issuer’s initial public offering. At the time of its initial public offering, an issuer will be classified for the purposes of escrow as either an “exempt issuer”, an “established issuer” or an “emerging issuer” as those terms are defined in NP 46-201.

Uniform terms of automatic timed release escrow apply to Principals of exchange listed issuers, differing only according to the classification of the issuer. As the Company anticipates that its Common Shares will be listed on the Exchange, it will be classified as an “emerging issuer”. As such, the following automatic timed releases will apply to the securities held by its Principals:

Date of Automatic Timed Release	Amount of Escrowed Securities Released
On the Listing Date	1/10 of the escrowed securities
6 months after the Listing Date	1/6 of the remaining escrowed securities
12 months after the Listing Date	1/5 of the remaining escrowed securities
18 months after the Listing Date	1/4 of the remaining escrowed securities
24 months after the Listing Date	1/3 of the remaining escrowed securities
30 months after the Listing Date	1/2 of the remaining escrowed securities
36 months after the Listing Date	The remaining escrowed securities

Assuming there are no changes to the escrowed securities initially deposited and no additional escrowed securities are deposited, automatic timed release escrow applicable to the Company will result in a 10% release on the Listing Date, with the remaining escrowed securities being released in 15% tranches every six months thereafter.

The automatic timed release provisions under NP 46-201 pertaining to “established issuers” provide that 25% of each Principal’s and shareholder’s escrowed securities are released on the Listing Date, with an additional 25% being released in equal tranches at six month intervals over eighteen months. If, within eighteen months of the Listing Date, the Company meets the “established issuer” criteria as set out in NP 46-201, the escrowed securities will be eligible for accelerated release available for established issuers. In such a scenario, that number of escrowed securities that would have been eligible for release from escrow if the Company had been an “established issuer” on the Listing Date will be immediately released from

escrow. The remaining escrowed securities would be released in accordance with the timed release provisions for established issuers, with all escrowed securities being released eighteen months from the Listing Date. The Company does not expect to become an established issuer within 18 months of the Listing Date.

Pursuant to the terms of the Escrow Agreement, 1,860,000 Common Shares will be held in escrow on the Listing Date.

PRINCIPAL SECURITYHOLDERS

To the knowledge of the directors and officers of the Company, no person directly or indirectly beneficially owns, or exercises control or direction over, Common Shares carrying more than 10% of the voting rights attaching to all the outstanding Common Shares as at the date of this Prospectus.

DIRECTORS AND EXECUTIVE OFFICERS

Name, Occupation and Security Holdings

The following table provides the names, municipalities of residence, position, principal occupations and the number of voting securities of the Company that each of the directors and executive officers beneficially owns, directly or indirectly, or exercises control over, as of the date hereof:

Name and Municipality of Residence and Position with the Company	Director/Officer Since	Principal Occupations Held During the Last 5 Years	Number and Percentage of Common Shares Beneficially Owned or Controlled, Directly or Indirectly ⁽¹⁾
Solomon Elimimian, Surrey, BC, Director	November 2018	Entrepreneur Professional football player and President of the Canadian Football League Players' Association	260,000 (0.96%)
Raymond Wladichuk, Vernon, BC CEO and Director	May 2020	Registered Professional Geoscientist Consultant	100,000 (0.37%)
Elyssia Patterson, Vancouver, BC CFO and Director	May 2020	Director at VLCTY Capital Inc. Co-CEO at Urbane Capital Corp. Manager of Investor Relations at Ynvisible Interactive Inc. Manager of Client Services at Vested Technology Corp. Regional Coordinator at CIBC Private Banking BC	Nil

Name and Municipality of Residence and Position with the Company	Director/Officer Since	Principal Occupations Held During the Last 5 Years	Number and Percentage of Common Shares Beneficially Owned or Controlled, Directly or Indirectly ⁽¹⁾
Edward Ierfino, Saint-Bruno de Montarville, QC Director	May 2020	Director, Corporate Development, Kintavar Exploration Inc. Investor relations specialist and advisor to various mining and life sciences companies	Nil
David Patterson, Vancouver, BC Director	May 2020	CEO of Vested Technology Corp.	1,500,000 (5.56%)

Notes:

(1) Percentage is based on 26,956,000 Common Shares issued and outstanding as of the date of this Prospectus.

The term of office of the directors expires annually at the time of the Company’s next annual general meeting. As at the date of this Prospectus, the directors and executive officers of the Company as a group beneficially own, directly or indirectly, or exercised control or discretion over an aggregate of 1,860,000 Common Shares of the Company, which is equal to 6.90% of the Common Shares issued and outstanding as at the date hereof.

Background

The following is a brief description of each of the directors and executive officers of the Company, including their names, positions and responsibilities with the Company, relevant educational background, principal occupations or employment during the five years preceding the date hereof, experience in the Company’s industry and the amount of time intended to be devoted to the affairs of the Company:

Raymond Wladichuk – Director and CEO, 32 years old.

Mr. Wladichuk, a British Columbia registered Professional Geoscientist, is a technical and managerial consultant in the natural resource, engineering, and construction industries. He has held executive and director positions for a number of publicly traded exploration companies. He is the principal of Waldo Sciences Inc., a science and engineering consulting company head quartered in the North Okanagan, BC, Canada. He holds a Bachelor of Science in earth sciences and a graduate diploma in business administration from Simon Fraser University.

As the CEO of the Company, Mr. Wladichuk is responsible for the day-to-day operations, outside contractors and service providers, acquisitions and project development, and of the financial operations of the Company in conjunction with the CFO and with outside accounting, tax and auditing firms. Mr. Wladichuk anticipates devoting approximately 50% of his working time for the benefit of the Company. Mr. Wladichuk is an independent contractor of the Company.

Elyssia Patterson – Director and CFO, 34 years old.

Ms. Patterson has extensive experience with the going public process of private start-ups. She works closely with private companies to implement strategies to become listed on the Toronto Stock Exchange, the TSX Venture Exchange (“TSXV”) or the CSE. She currently works as co-CEO of Urbane Capital Corp. and is

a director of VLCTY Capital Inc. (VLCY.P on the TSXV), and formerly worked at Vested Technology Corp. and CIBC Private Banking and has developed diverse partnerships over the years.

She holds a bachelor's degree in Communications from Simon Fraser University and a Masters of Business Administration from Queensland University.

As the CFO of the Company, Ms. Patterson is responsible for coordination of the financial operations of the Company in conjunction with the Chief Executive Officer and with outside accounting, tax and auditing firms. Ms. Patterson anticipates devoting approximately 50% of her working time for the benefit of the Company. Ms. Patterson is an independent contractor of the Company.

Edward Ierfino – Director, 52 years old.

Mr. Ierfino has more than 15 years of capital markets experience as a director or advisor in numerous going public transactions. Since 2003, he has been president of E G I Holdings Corporation, a consultancy firm providing advisory services to executive management and directors of publicly-traded companies in the areas of financing, investor relations, regulatory compliance and strategic development. Mr. Ierfino has developed specific experience in the health, natural resources, financial transaction services and technology industries. He has also served on the board of directors of several issuers listed on the TSXV and founded two Capital Pool Companies: Ovid Capital Ventures Inc. (which completed a Qualifying Transaction and is now doing business as Relevium Technologies Inc.) and Element 79 Capital Inc. (which completed a Qualifying Transaction and is now doing business as Lumiera Health Inc.).

Mr. Ierfino holds a Bachelor of Commerce majoring in finance from Concordia University in Montreal, Quebec. He anticipates devoting approximately 10% of his working time for the benefit of the Company.

David Patterson – Director, 67 years old.

Mr. Patterson is the Co-founder and CEO of Vested Technology Corp., a start-up equity crowdfunding portal. Mr. Patterson is currently an independent director of BlockMint Technologies Corp. (from February 2019) and Xplore Resources Corp. (formerly VON Capital Corp.) an exploration and development company listed on the TSXV (from September 2017).

Mr. Patterson is a former CEO (from October 2009 to January 2013) of Emerita Resources Corp., an exploration and development company listed on the TSXV. Mr. Patterson was also CFO of Donner Metals Ltd., a mineral exploration and development company listed on the TSXV, from August 2005 to October 2012.

He holds a Masters of Business Administration from Simon Fraser University (1991). For more than 30 years he has been involved in the administration and financing of exploration companies based in North America. Mr. Patterson anticipates devoting approximately 10% of his working time for the benefit of the Company.

Solomon Elimimian – Director, 33 years old.

Mr. Elimimian is an entrepreneur and investor. He is the founder of 56 Acquisitions Inc. (now Snowy Owl Gold Corp.). Mr. Elimimian has an extensive network of individuals across Canada that will be instrumental in the success of the company.

Mr. Elimimian is a Canadian Football League (CFL) veteran and current president of the CFL Players' Association.

He holds a bachelor's degree in English from the University of Hawaii.

Mr. Elimimian anticipates devoting approximately 10% of his working time for the benefit of the Company.

Corporate Cease Trade Orders or Bankruptcies

No director or executive officer of the Company is, as at the date of this Prospectus, or was within ten years before the date hereof, a director, CEO or CFO of any company, including the Company, that:

- (a) was subject to a cease trade order, an order similar to cease trade order or an order that denied the relevant company access to any exemption under securities legislation, that was in effect for a period for more than 30 consecutive days, that was issued while the director or executive officer was acting in the capacity as director, CEO or CFO; or
- (b) was subject to an a cease trade order, an order similar to cease trade order or an order that denied the relevant company access to any exemption under securities legislation, that was in effect for a period for more than 30 consecutive days, that was issued after the director or executive officer ceased to be a director, CEO or CFO and which resulted from an event that occurred while that person was acting in the capacity as director, CEO or CFO.

Penalties or Sanctions

Other than as disclosed below, no director or executive officer of the Company or a shareholder holding a sufficient number of securities of the Company to affect materially the control of the Company, has been subject to:

- (a) any penalties or sanctions imposed by a court relating to securities legislation or by a securities regulatory authority or has entered into a settlement with a regulatory authority; or
- (b) any other penalties or sanctions imposed by a court or regulatory body that would be likely to be considered important to a reasonable investor in making an investment decision.

Mr. David Patterson entered into a settlement agreement and agreed statement of facts with the BCSC on October 13, 2000 for failing to file certain insider trading reports pertaining to trades by a trust over which he had direction or control. Mr. Patterson was fined \$40,000 (and \$10,000 costs) and was prohibited from acting as a director or officer of public companies for a period of 15 months (expired January 14, 2002).

Bankruptcies

No director or executive officer of the Company or a shareholder holding a sufficient number of securities of the Company to affect materially the control of the Company:

- (a) is, as at the date of this Prospectus, or has been within the ten years before the date hereof, a director or executive officer of any company, including the Company, that, while that person was acting in that capacity, or within a year of that person ceasing to act in that capacity, became bankrupt, made a proposal under any legislation relating to bankruptcy or insolvency or was subject to or instituted any proceedings, arrangement or compromise with creditors or had a receiver, receiver manager or trustee appointed to hold its assets; or
- (b) has, within the ten years before the date hereof, become bankrupt, made a proposal under any legislation relating to bankruptcy or insolvency, or become subject to or instituted any proceedings, arrangement or compromise with creditors, or had a receiver, receiver manager or trustee appointed to hold the assets of the director, executive officer or shareholder.

Conflicts of Interest

The directors of the Company are required by law to act honestly and in good faith with a view to the best interests of the Company and to disclose any interests, which they may have in any project or opportunity of the Company. If a conflict of interest arises at a meeting of the Board, any director in a conflict will disclose his interest and abstain from voting on such matter.

To the best of the Company's knowledge, and other than as disclosed herein, there are no known existing or potential conflicts of interest among the Company, its promoters, directors and officers or other members of management of the Company or of any proposed promoter, director, officer or other member of management as a result of their outside business interests except that certain of the directors and officers serve as directors and officers of other companies, and therefore it is possible that a conflict may arise between their duties to the Company and their duties as a director or officer of such other companies.

The directors and officers of the Company will not be devoting all of their time to the affairs of the Company. Some of the directors and officers of the Company are directors and officers of other companies, some of which are in the same business as the Company. The directors and officers of the Company are required by law to act in the best interests of the Company. They have the same obligations to the other companies in respect of which they act as directors and officers. Discharge by the directors and officers of their obligations to the Company may result in a breach of their obligations to the other companies, and in certain circumstances this could expose the Company to liability to those companies. Similarly, discharge by the directors and officers of their obligations to the other companies could result in a breach of their obligations to act in the best interests of the Company. Such conflicting legal obligations may expose the Company to liability to others and impair its ability to achieve its business objectives.

EXECUTIVE COMPENSATION

The Company was not a reporting issuer at any time during the fiscal year ended May 31, 2020, the Company's most recently completed financial year. Accordingly, and in accordance with Form 51-102F6 Statement of Executive Compensation ("**Form 51-102F6**"), the following is a discussion of all significant elements of compensation to be awarded to, earned by, paid to or payable to Named Executive Officers of the Company, once the Company becomes a reporting issuer, to the extent this compensation has been determined.

For the purposes hereof, the term Named Executive Officer, or NEO, means each CEO, each CFO and each of the Company's three most highly compensated executive officers, other than the CEO and the CFO, who were serving as executive officers as at the end of the Company's most recently completed financial year ended May 31, 2020 and whose total salary and bonus exceeds \$150,000 and any additional individuals for whom disclosure would have been provided except that the individual was not serving as an officer of the Company at the end of the Company's most recently completed financial year.

Compensation Discussion and Analysis

At its present stage of development, the Company does not have any formal objectives, criteria and analysis for determining the compensation of its Named Executive Officers and primarily relies on the discussions and determinations of the Board. With a view to minimizing its cash expenditures not directed at the exploration of the Property, the emphasis in compensating the Named Executive Officers shall be the grant of incentive Options under the Option Plan set forth below. The type and amount of future compensation to be paid to NEOs and directors has not been determined and the Board has not considered the implications of the risks associated with the compensation policies and practices. The Company has not considered the implications of the risks associated with the Company's compensation policies and practices. Neither

NEOs nor directors are permitted to purchase financial instruments that are designed to hedge or offset a decrease in the market value of equity securities offered as compensation.

As of the date of this Prospectus, the Board has not established any benchmark or performance goals to be achieved or met by Named Executive Officers; however, such Named Executive Officers are expected to carry out their duties in an effective and efficient manner so as to advance the business objectives of the Issuer. The satisfactory discharge of such duties is subject to ongoing monitoring by the Company's directors.

Option Based Awards and Other Compensation Securities

On June 4, 2020, the Company implemented the Option Plan in order to provide effective incentives to directors, officers and employees of the Company and to enable the Company to attract and retain experienced and qualified individuals in those positions by permitting such individuals to directly participate in an increase in per share value created for the Company's shareholders. The Company has no equity incentive plans other than the Option Plan. The size of Option grants is dependent on each officer's level of responsibility, authority and importance to the Company and the degree to which such officer's long-term contribution to the Company will be key to its long-term success.

On June 4, 2020, the Company granted 1,000,000 Options to certain directors and officers of the Company:

Compensation Securities							
Name and Position	Type of compensation security	Number of compensation securities and percentage of class	Date of issue or grant	Issue conversion of exercise price	Closing price of security on date of grant	Closing price of security at year-end	Expiry Date
Raymond Wladichuk, Director and CEO	Options	300,000 (30%)	June 4, 2020	\$0.10	N/A	N/A	June 4, 2025
Elyssia Patterson, Director and CFO	Options	300,000 (30%)	June 4, 2020	\$0.10	N/A	N/A	June 4, 2025
Edward Ierfino, Director	Options	200,000 (20%)	June 4, 2020	\$0.10	N/A	N/A	June 4, 2025
Solomon Elimimian, Director	Options	200,000 (20%)	June 4, 2020	\$0.10	N/A	N/A	June 4, 2025

Defined Benefit Plans

The Company does not have any defined benefit or actuarial plan.

Termination and Change of Control Benefits

The Company does not have any contracts, agreements, plans or arrangements in place with any NEOs that provides for payment following or in connection with any termination (whether voluntary, involuntary or

constructive) resignation, retirement, a change of control of the Company or a change in a NEO’s responsibilities.

Director Compensation

The Company does not have any arrangements, standard or otherwise, pursuant to which directors are compensated by the Company for their services in their capacity as directors, or for committee participation, involvement in special assignments or for services as consultants or experts. As with the Named Executive Officers, the Board intends to compensate directors primarily through the grant of Options and reimbursement of expenses incurred by such persons acting as directors of the Company.

INDEBTEDNESS OF DIRECTORS AND EXECUTIVE OFFICERS

Aggregate Indebtedness

Other than as disclosed herein and other than routine indebtedness, as that term is defined in paragraph 10.3(c) of Form 51-102F5 Information Circular (“**Form 51-102F5**”), no directors, executive officers and employees and no former directors, executive officers and employees of the Company are or were indebted to the Company in connection with a purchase of securities and all other indebtedness as at the date of this Prospectus.

Indebtedness of Directors and Executive Officers under Securities Purchase and Other Programs

Other than as disclosed herein, or other than routine indebtedness, as that term is defined in paragraph 10.3(c) of Form 51-102F5, no directors or executive officers of the Company, and associates of such directors or executive officers are or were indebted to the Company as at the date of this Prospectus.

AUDIT COMMITTEE AND CORPORATE GOVERNANCE

Audit Committee

The Audit Committee’s role is to act in an objective, independent capacity as a liaison between the auditors, management and the Board and to ensure the auditors have a facility to consider and discuss governance and audit issues with parties not directly responsible for operations. NI 52-110, NI 41-101 and Form 52-110F2 require the Company, as an IPO venture issuer, to disclose certain information relating to the Company’s audit committee and its relationship with the Company’s independent auditors. David Patterson is the chair of the audit committee.

Audit Committee Charter

The text of the Audit Committee’s charter is attached as Schedule “B” to this Prospectus.

Composition of Audit Committee

The members of the Company’s Audit Committee are:

David Patterson	Independent ⁽¹⁾	Financially literate ⁽²⁾
Edward Ierfino	Independent ⁽¹⁾	Financially literate ⁽²⁾
Raymond Wladichuk	Not independent ⁽¹⁾	Financially literate ⁽²⁾

Notes:

(1) A member of an audit committee is independent if the member has no direct or indirect material relationship with the Company, which could, in the view of the Board, reasonably interfere with the exercise of a member’s independent judgment.

- (2) An individual is financially literate if he has the ability to read and understand a set of financial statements that present a breadth of complexity of accounting issues that are generally comparable to the breadth and complexity of the issues that can reasonably be expected to be raised by the Company's financial statements.

Relevant Education and Experience

Each member of the Company's present Audit Committee has adequate education and experience that is relevant to his performance as an Audit Committee member and, in particular, the requisite education and experience that have provided the member with:

- (a) an understanding of the accounting principles used by the Company to prepare its financial statements and the ability to assess the general application of those principles in connection with estimates, accruals and reserves;
- (b) experience preparing, auditing, analyzing or evaluating financial statements that present a breadth and level of complexity of accounting issues that are generally comparable to the breadth and complexity of issues that can reasonably be expected to be raised by the Company's financial statements or experience actively supervising individuals engaged in such activities; and
- (c) an understanding of internal controls and procedures for financial reporting. See "Directors and Executive Officers" for further details.

For a summary of the experience and education of the Audit Committee members see "*Directors and Executive Officers*".

Audit Committee Oversight

At no time since the commencement of the Company's most recently completed financial year was a recommendation of the Audit Committee to nominate or compensate an external auditor not adopted by the Board.

Pre-Approval Policies and Procedures

The Audit Committee is authorized by the Board to review the performance of the Company's external auditors and approve in advance provision of services other than auditing and to consider the independence of the external auditors, including a review of the range of services provided in the context of all consulting services bought by the Company. The Audit Committee is authorized to approve in writing any non-audit services or additional work which the Chairman of the Audit Committee deems is necessary, and the Chairman will notify the other members of the Audit Committee of such non-audit or additional work and the reasons for such non-audit work for the Committee's consideration, and if thought fit, approval in writing.

External Auditor Service Fees

Baker Tilly WM LLP, the Company's external auditor, has billed the Company \$9,000 for its services in connection with the audit of the periods ended May 31, 2019 and May 31, 2020 and this Prospectus.

Exemption

At no time since the commencement of the Company's most recently completed financial year has the Company relied on the exemption in Section 2.4 of NI 52-110 (De Minimis Non-audit Services).

The Company has relied upon the exemption provided by section 6.1 of NI 52-110, which states that the Company, as an IPO Venture Issuer, is not required to comply with Part 3 (Composition of the Audit Committee) and Part 5 (Reporting Obligations).

CORPORATE GOVERNANCE

General

The Board believes that good corporate governance improves corporate performance and benefits all shareholders. NP 58-201 provides non-prescriptive guidelines on corporate governance practices for reporting issuers such as the Company. In addition, NI 58-101 prescribes certain disclosure by the Company of its corporate governance practices. This disclosure is presented below.

Board of Directors

The Board facilitates its exercise of independent supervision over the Company's management through frequent meetings of the Board. The Board is comprised of five directors: Raymond Wladichuk, Elyssia Patterson, David Patterson, Solomon Elimimian and Edward Ierfino. As the size of the Board is small, the Board has no formal procedures designed to facilitate the exercise of independent supervision over management, relying instead on the integrity of the individual members of its management team to act in the best interests of the Company.

Raymond Wladichuk is not independent as he is the CEO. Elyssia Patterson is not independent as she is the CFO of the Company.

Directorships

Currently, the following directors are also directors of the following other reporting issuers:

David Patterson	Xplore Resources Corp.
	BlockMint Technologies Inc.
Elyssia Patterson	VLCTY Capital Inc.

Orientation and Continuing Education

New Board members receive an orientation package, which includes reports on operations and results, and any public disclosure filings by the Company, as may be applicable. Board meetings are sometimes held at the Company's offices and, from time to time, are combined with presentations by the Company's management to give the directors additional insight into the Company's business. In addition, management of the Company makes itself available for discussion with all Board members.

Ethical Business Conduct

The Board has found that the fiduciary duties placed on individual directors by the Company's governing corporate legislation and the common law and the restrictions placed by applicable corporate legislation on an individual director's participation in decisions of the Board in which the director has an interest have been sufficient to ensure that the Board operates independently of management and in the best interests of the Company.

Nomination of Directors

The Board considers its size each year when it considers the number of directors to recommend to the shareholders for election at the annual meeting of shareholders, taking into account the number required to carry out the Board's duties effectively and to maintain a diversity of view and experience.

The Board does not have a nominating committee, and these functions are currently performed by the Board as a whole. However, if there is a change in the number of directors required by the Company, this policy will be reviewed.

Compensation

The Board is responsible for determining compensation for the directors of the Company to ensure it reflects the responsibilities and risks of being a director of a public company.

Other Board Committees

The Board has no committees, other than the Audit Committee.

Assessments

Due to the minimal size of the Board, no formal policy has been established to monitor the effectiveness of the directors, the Board and its committees.

RISK FACTORS

General

The Company is in the business of exploring and, if warranted, developing mineral properties, which is a highly speculative endeavor. A purchase of any of the securities offered hereunder involves a high degree of risk and should be undertaken only by purchasers whose financial resources are sufficient to enable them to assume such risks and who have no need for immediate liquidity in their investment. An investment in the securities offered hereunder should not constitute a significant portion of an individual's investment portfolio and should only be made by persons who can afford a total loss of their investment. Prospective investors should evaluate carefully the following risk factors associated with an investment in the Company's securities prior to purchasing any of the securities offered hereunder.

Limited Operating History

The Company has no history of earnings. There are no known commercial quantities of mineral reserves on any properties optioned by the Company. There is no guarantee that economic quantities of mineral reserves will be discovered on the Property by the Company in the near future or at all. If the Company does not generate revenue, it may be unable to sustain its operations in which case it may become insolvent and you may lose your investment.

Dilution

Common Shares, including rights, warrants, special warrants, subscription receipts and other securities to purchase, to convert into or to exchange into Common Shares, may be created, issued, sold and delivered on such terms and conditions and at such times as the Board may determine. In addition, the Company will issue additional Common Shares from time to time pursuant to the options to purchase Common Shares issued from time to time by the Board. The issuance of these Common Shares will result in dilution to holders of Common Shares.

Speculative Nature of Mineral Exploration

Resource exploration is a speculative business, characterized by a number of significant risks including, among other things, unprofitable efforts resulting not only from the failure to discover mineral deposits but also from finding mineral deposits that, though present, are insufficient in quantity and quality to return a profit from production. The marketability of minerals acquired or discovered by the Company may be affected by numerous factors which are beyond the control of the Company and which cannot be accurately predicted, such as market fluctuations, the proximity and capacity of milling facilities, mineral markets and processing equipment, and such other factors as government regulations, including regulations relating to royalties, allowable production, importing and exporting of minerals, and environmental protection, the combination of which factors may result in the Company not receiving an adequate return of investment capital. There is no assurance that the Company's mineral exploration activities will result in any discoveries of commercial bodies of ore. The long-term profitability of the Company's operations will in part be directly related to the costs and success of its exploration programs, which may be affected by a number of factors. Substantial expenditures are required to establish reserves through drilling and to develop the mining and processing facilities and infrastructure at any site chosen for mining. Although substantial benefits may be derived from the discovery of a major mineralized deposit, no assurance can be given that minerals will be discovered in sufficient quantities to justify commercial operations or that funds required for development can be obtained on a timely basis.

Acquisition of Additional Mineral Properties

If the Company abandons the exploration and development of the Property, there is no assurance that it will be able to acquire another mineral property of merit or that such an acquisition would be approved by the Exchange. There is also no guarantee that the Exchange will approve the acquisition of any additional properties by the Company, whether by way of option or otherwise, should the Company wish to acquire any additional properties.

Commercial Ore Deposits

The Property is in the exploration stage only and is without a known body of commercial ore. Development of this property would follow only if favourable exploration results are obtained. The business of exploration for minerals and mining involves a high degree of risk. Few properties that are explored are ultimately developed into producing mines.

Uninsurable Risks

In the course of exploration, development and production of mineral properties, certain risks, and in particular, unexpected or unusual geological operating conditions including rock bursts, cave-ins, fires, flooding and earthquakes may occur. It is not always possible to fully insure against such risks and the Company may decide not to take out insurance against such risks as a result of high premiums or other reasons. Should such liabilities arise, they could reduce or eliminate any future profitability and result in increasing costs and a decline in the value of the securities of the Company.

Permits and Government Regulations

The future operations of the Company may require permits from various federal, provincial and local governmental authorities and will be governed by laws and regulations governing prospecting, development, mining, production, export, taxes, labour standards, occupational health, waste disposal, land use, environmental protections, mine safety and other matters. There can be no guarantee that the Company will be able to obtain all necessary permits and approvals that may be required to undertake exploration activity or commence construction or operation of mine facilities on the Property.

Environmental and Safety Regulations and Risks

Environmental laws and regulations may affect the operations of the Company. These laws and regulations set various standards regulating certain aspects of health and environmental quality. They provide for penalties and other liabilities for the violation of such standards and establish, in certain circumstances, obligations to rehabilitate current and former facilities and locations where operations are or were conducted. The permission to operate can be withdrawn temporarily where there is evidence of serious breaches of health and safety standards, or even permanently in the case of extreme breaches. Significant liabilities could be imposed on the Company for damages, clean-up costs or penalties in the event of certain discharges into the environment, environmental damage caused by previous owners of acquired properties or noncompliance with environmental laws or regulations. In all major developments, the Company generally relies on recognized designers and development contractors from which the Company will, in the first instance, seek indemnities. The Company intends to minimize risks by taking steps to ensure compliance with environmental, health and safety laws and regulations and operating to applicable environmental standards. There is a risk that environmental laws and regulations may become more onerous, making the Company's operations more expensive.

Key Person Insurance

The Company does not maintain key person insurance on any of its directors or officers, and as result the Company would bear the full loss and expense of hiring and replacing any director or officer in the event the loss of any such persons by their resignation, retirement, incapacity, or death, as well as any loss of business opportunity or other costs suffered by the Company from such loss of any director or officer.

Mineral Titles

The Company is satisfied that evidence of title to the Property is adequate and acceptable by prevailing industry standards with respect to the current stage of exploration on the Property. The Company may face challenges to the title the Property or subsequent properties it may acquire, which may prove to be costly to defend or could impair the advancement of the Company's business plan.

Loss of Interest in Properties

The Company's ability to maintain an interest in the properties owned by the Company will be dependent on its ability to raise additional funds by equity financing. Failure to obtain additional financing may result in the Issuer being unable to make the periodic payments required to keep the Property in good standing and could result in the delay or postponement of further exploration and or the partial or total loss of the Company's interest in the properties transferred to or optioned by the Company.

Failure to obtain additional financing may result in the Company being unable to complete the required work required to keep the Property interests in good standing and could result in the delay or postponement of further exploration and or the partial or total loss of the Company's interest in the Property.

Aboriginal Title

The Property or other properties owned or optioned by the Company may in the future be the subject of First Nations land claims. The legal nature of aboriginal land claims is a matter of considerable complexity. The impact of any such claim on the Company's ownership interest in the properties optioned or owned by the Company cannot be predicted with any degree of certainty and no assurance can be given that a broad recognition of aboriginal rights in the area in which the properties optioned or purchased by the Company are located, by way of a negotiated settlement or judicial pronouncement, would not have an adverse effect on the Company's activities. Even in the absence of such recognition, the Company may at some point be

required to negotiate with First Nations in order to facilitate exploration and development work on the properties optioned or owned by the Company.

Fluctuating Mineral Prices

The Company's revenues in the future, if any, are expected to be in large part derived from the extraction and sale of precious and base minerals and metals, which in turn depend on the results of the Company's exploration on these properties and whether development will be commercially viable or even possible. Factors beyond the control of the Company may affect the marketability of metals discovered, if any. Metal prices have fluctuated widely, particularly in recent years. Consequently, the economic viability of any of the Company's exploration projects cannot be accurately predicted and may be adversely affected by fluctuations in mineral prices.

Competition

The mining industry is intensely competitive in all its phases. The Company competes for the acquisition of mineral properties, claims, leases and other mineral interests as well as for the recruitment and retention of qualified employees with many companies possessing greater financial resources and technical facilities than the Company. The competition in the mineral exploration and development business could have an adverse effect on the Company's ability to hire or maintain experienced and expert personnel or acquire suitable properties or prospects for mineral exploration in the future.

Management

The success of the Company is currently largely dependent on the performance of its directors and officers. The loss of the services of any of these persons could have a materially adverse effect on the Company's business and prospects. There is no assurance the Company can maintain the services of its directors, officers or other qualified personnel required to operate its business.

Financing Risks

The Company has no history of significant earnings and, due to the nature of its business, there can be no assurance that the Company will be profitable. The Company has paid no dividends on its shares since incorporation and does not anticipate doing so in the foreseeable future. The only present source of funds available to the Company is through the sale of its securities. Even if the results of exploration are encouraging, the Company may not have sufficient funds to conduct the further exploration that may be necessary to determine whether or not a commercially mineable deposit exists on the properties owned by the Company. While the Company may generate additional working capital through further equity offerings or through the sale or possible syndication of the property owned by the Company, there is no assurance that any such funds will be available. At present it is impossible to determine what amounts of additional funds, if any, may be required.

Negative Cash Flows from Operations

For the year ended May 31, 2020, the Company sustained net losses from operations and had negative cash flow from operating activities of \$3,915. The Company continues to have negative operating cash flow. It is highly likely the Company may have negative cash flow in any future period and as a result, the Company will need to use available cash, including proceeds to fund any such negative cash flow.

Resale of Common Shares

The continued operation of the Company will be dependent upon its ability to generate operating revenues and to procure additional financing. There can be no assurance that any such revenues can be generated or

that other financing can be obtained. If the Company is unable to generate such revenues or obtain such additional financing, any investment in the Company may be lost. In such event, the probability of resale of the Common Shares purchased would be diminished.

Price Volatility of Publicly Traded Securities

In recent years, the securities markets in Canada have experienced a high level of price and volume volatility, and the market prices of securities of many companies have experienced wide fluctuations in price which have not necessarily been related to the operating performance, underlying asset values or prospects of such companies. There can be no assurance that continual fluctuations in price will not occur. It may be anticipated that any quoted market for the Common Shares will be subject to market trends generally, notwithstanding any potential success of the Company in creating revenues, cash flows or earnings. If an active public market for the Common Shares does not develop, the liquidity of a shareholder's investment may be limited and the share price may decline below the initial purchase price.

Conflicts of Interest

Some of the directors and officers are engaged and will continue to be engaged in the search for additional business opportunities on behalf of other corporations, and situations may arise where these directors and officers will be in direct competition with the Company. Conflicts, if any, will be dealt with in accordance with the relevant provisions of the *Business Corporations Act* (British Columbia). Some of the directors and officers of the Company are or may become directors or officers of other companies engaged in other business ventures. In order to avoid the possible conflict of interest which may arise between the directors' duties to the Company and their duties to the other companies on whose boards they serve, the directors and officers of the Company have agreed to the following:

- Participation in other business ventures offered to the directors will be allocated between the various companies and on the basis of prudent business judgment and the relative financial abilities and needs of the companies to participate;
- No commissions or other extraordinary consideration will be paid to such directors and officers; and business opportunities formulated by or through other companies in which the directors and officers are involved will not be offered to the Company except on the same or better terms than the basis on which they are offered to third party participants.

Public Health Crises

The Company may be adversely affected by public health crises and other events outside its control. Public health crises, such as epidemics and pandemics, acts of terrorism, war or other conflicts and other events outside of our control, may adversely impact the activities of the Company as well as operating results. In addition to the direct impact that such events could have on the Company's facilities and workforce, these types of events could negatively impact capital expenditures and overall economic activity in impacted regions or, depending on the severity of the event, globally, which could impact the demand for and prices of commodities. The recent outbreak of the novel coronavirus known as COVID-19 initially impacted access to and from, and overall economic activity in, parts of China and has since spread globally. To date, the Company has not been materially adversely impacted by the outbreak. However, a prolonged continuance of this public health crisis, an increase in its breadth or in its overall severity, could adversely affect our workforce and ability to operate generally as well as cause significant investment decisions to be delayed or postponed. A prolonged continuance of this public health crisis could also have a material adverse effect on overall economic growth and impact the stability of the financial markets and availability of credit. Any of these developments could have a material adverse effect on the Company's business, financial position, liquidity and results of operations.

Tax Issues

Income tax consequences in relation to the Common Shares will vary according to circumstances of each investor. Prospective investors should seek independent advice from their own tax and legal advisers prior to investing in Common Shares of the Company.

Dividends

The Company does not anticipate paying any dividends on its Common Shares in the foreseeable future.

PROMOTER

Solomon Elimimian, one of the Company's directors, may be considered to be a Promoter of the Company in that he took the initiative in founding and organizing the business of the Company. Mr. Elimimian is the registered and beneficial owner of 260,000 Common Shares of the Company and 200,000 Options, which is equal to 0.96% of the Common Shares issued and outstanding as at the date hereof on a fully-diluted basis.

Other than as disclosed above, no person who was a Promoter of the Company:

1. received anything of value directly or indirectly from the Company;
2. sold or otherwise transferred any asset to the Company within the last 2 years;
3. is at of the date hereof, or was within 10 years before the date hereof, a director, CEO or CFO of any person or company that was the subject of a cease trade order or similar order or an order that denied the relevant person or company access to any statutory exemptions for a period of more than 30 consecutive days while that person was acting in the capacity as director, CEO or CFO;
4. is at of the date hereof, or was within 10 years before the date hereof, a director, CEO or CFO of any person or company that was the subject of a cease trade order or similar order or an order that denied the relevant person or company access to any statutory exemptions for a period of more than 30 consecutive days that was issued after the person ceased to be a director, CEO or CFO and which resulted from an event that occurred while the person was acting in the capacity as director, CEO or CFO;
5. is at of the date hereof, or was within 10 years before the date hereof, a director or executive officer of any person or company that, while the person was acting in that capacity, or within a year of that person ceasing to act in the capacity, became bankrupt, made a proposal under any legislation relating to bankruptcy or insolvency or was subject to or instituted any proceedings, arrangement or compromise with creditors or had a receiver or receiver manager or trustee appointed to hold its assets;
6. has, within 10 years before the date hereof, become bankrupt, made a proposal under any legislation relating to bankruptcy or insolvency, or become subject to or instituted any proceedings, arrangement or compromise with creditors, or had a receiver, receiver manager or trustee appointed to hold the assets of the person;
7. has been subject to any penalties or sanctions imposed by a court relating to Canadian securities legislation or by a Canadian securities regulatory authority or has entered into a settlement agreement with a Canadian securities regulatory authority;

8. has been subject to any other penalties or sanctions imposed by a court or regulatory body that would be likely to be considered important to a reasonable investor making an investment decision; or
9. has within the past 10 years become bankrupt, made a proposal under any legislation relating to bankruptcy or insolvency or been subject to or instituted any proceedings, arrangement or compromise with creditors or had a receiver or receiver manager or trustee appointed to hold its assets.

LEGAL PROCEEDINGS

Legal Proceedings

The Company is not currently a party to any legal proceedings, nor is the Company currently contemplating any legal proceedings, which are material to its business. Management of the Company is not currently aware of any legal proceedings contemplated against the Company.

Regulatory Actions

From incorporation to the date of this Prospectus, management knows of no:

- (a) penalties or sanctions imposed against the Company by a court relating to provincial and territorial securities legislation or by a securities regulatory authority;
- (b) other penalties or sanctions imposed by a court or regulatory body against the Company necessary for the Prospectus to contain full, true and plain disclosure of all material facts relating to the securities being distributed; and
- (c) settlement agreements the Company entered into before a court relating to provincial and territorial securities legislation or with a securities regulatory authority.

INTEREST OF MANAGEMENT AND OTHERS IN MATERIAL TRANSACTIONS

Except as set forth below, from incorporation on November 9, 2018 to the date of this Prospectus, none of the following persons or companies has had any material interest, direct or indirect, in any transaction which has materially affected or is reasonably expected to materially affect the Company: (a) any director or executive officer of the Company; (b) any person or company that is the direct or indirect beneficial owner of, or who exercises control or direction over, more than 10% of any class or series of the Company's outstanding voting securities; and (c) any associate or affiliate of any of the persons or companies referred to in paragraphs (a) or (b).

- Mr. David Patterson, a director of the Company, was one of the Sellers pursuant to the Purchase Agreement between the Company and the Sellers. At the time, Mr. Patterson was not a director, officer or insider of the Company.

AUDITORS

The auditors of the Company are Baker Tilly WM LLP, having an address at 900 - 400 Burrard St. Vancouver, BC, Canada V6C 3B7. Such firm is independent of the Company within the meaning of the Code of Professional Conduct of the Chartered Professional Accountants of British Columbia.

REGISTRAR AND TRANSFER AGENT

The registrar and transfer agent of the Company is Endeavor Trust Corporation at its principal office at 777 Hornby Street, Unit 702, Vancouver, BC V6Z 1S4.

MATERIAL CONTRACTS

Except for contracts made in the ordinary course of business, the Purchase Agreement is the only material contract entered into by the Company from its incorporation to the date of this Prospectus.

EXPERTS

The following persons or companies whose profession or business gives authority to the report, valuation, statement or opinion made by the person or company are named in this Prospectus as having prepared or certified a report, valuation, statement or opinion in this Prospectus:

Baker Tilly WM LLP, Chartered Professional Accountants, auditor of the Company, who prepared the independent auditor's report on the Company's financial statements included in and forming part of this Prospectus, has informed the Company that it is independent of the Company within the meaning of the Code of Professional Conduct of the Chartered Professional Accountants of British Columbia.

The Technical Report was prepared by Messrs. Alain-Jean Beauregard, P. Geo. (OGQ # 00227) and Daniel Gaudreault, P. Eng. (OIQ # 39834) of Geologica Groupe-Conseil Inc. None of Geologica, Mr. Beauregard or Mr. Gaudreault has any interest in the Company, the Company's securities or the Property and they have not held, received (nor will they receive) any registered or beneficial interests, direct or indirect, in any securities or other property of the Company or of its associates or affiliates when the Technical Report was prepared or thereafter.

OTHER MATERIAL FACTS

There are no material facts about the Company that are not otherwise disclosed in this Prospectus.

FINANCIAL STATEMENTS

Financial statements of the Company for the periods ended May 31, 2019, May 31, 2020 and August 31, 2020 are included in this Prospectus as Schedule "A".

SCHEDULE "A"
SNOWY OWL GOLD CORP. FINANCIAL STATEMENTS

Table of Contents

Audited financial statements for the year ended May 31, 2020

Audited financial statements for the period November 9, 2018 (Date of Incorporation) to May 31, 2019

Unaudited financial statements for the three months ended August 31, 2020

(See Financial Statements attached.)

Snowy Owl Gold Corp.

(formerly 56 Acquisitions Inc.)

Financial Statements

**For the Year Ended May 31, 2020 and Period from incorporation on
November 9, 2018 to May 31, 2019**

INDEPENDENT AUDITOR'S REPORT

To the Shareholders of Snowy Owl Gold Corp. (formerly 56 Acquisitions Inc.):

Opinion

We have audited the financial statements of Snowy Owl Gold Corp. (formerly 56 Acquisitions Inc.) (the “Company”), which comprise the statements of financial position as at May 31, 2020 and May 31, 2019, and the statements of loss and comprehensive loss, statements of changes in shareholders’ equity and statements of cash flows for the year ended May 31, 2020 and period from incorporation on November 9, 2018 to May 31, 2019, and notes to the financial statements, including a summary of significant accounting policies.

In our opinion, the accompanying financial statements present fairly, in all material respects, the financial position of the Company as at May 31, 2020 and May 31, 2019, and its financial performance and its cash flows for the year ended May 31, 2020 and the period from incorporation on November 9, 2018 to May 31, 2019 in accordance with International Financial Reporting Standards.

Basis for Opinion

We conducted our audits in accordance with Canadian generally accepted auditing standards. Our responsibilities under those standards are further described in the *Auditor’s Responsibilities for the Audit of the Financial Statements* section of our report. We are independent of the Company in accordance with the ethical requirements that are relevant to our audits of the financial statements in Canada, and we have fulfilled our other ethical responsibilities in accordance with these requirements. We believe that the audit evidence we have obtained in our audits is sufficient and appropriate to provide a basis for our opinion.

Material Uncertainty Related to Going Concern

We draw attention to Note 1 in the financial statements, which describes events and conditions indicating that a material uncertainty exists that may cast significant doubt on the Company’s ability to continue as a going concern. Our opinion is not modified in respect of this matter.

Responsibilities of Management and Those Charged with Governance for the Financial Statements

Management is responsible for the preparation and fair presentation of the financial statements in accordance with International Financial Reporting Standards, and for such internal control as management determines is necessary to enable the preparation of financial statements that are free from material misstatement, whether due to fraud or error.

In preparing the financial statements, management is responsible for assessing the Company’s ability to continue as a going concern, disclosing, as applicable, matters related to going concern and using the going concern basis of accounting unless management either intends to liquidate the Company or to cease operations, or has no realistic alternative but to do so.

Those charged with governance are responsible for overseeing the Company’s financial reporting process.

ASSURANCE • TAX • ADVISORY

Auditor's Responsibilities for the Audit of the Financial Statements

Our objectives are to obtain reasonable assurance about whether the financial statements as a whole are free from material misstatement, whether due to fraud or error, and to issue an auditor's report that includes our opinion. Reasonable assurance is a high level of assurance but is not a guarantee that an audit conducted in accordance with Canadian generally accepted auditing standards will always detect a material misstatement when it exists. Misstatements can arise from fraud or error and are considered material if, individually or in the aggregate, they could reasonably be expected to influence the economic decisions of users taken on the basis of these financial statements.

As part of an audit in accordance with Canadian generally accepted auditing standards, we exercise professional judgment and maintain professional skepticism throughout the audit. We also:

- Identify and assess the risks of material misstatement of the financial statements, whether due to fraud or error, design and perform audit procedures responsive to those risks, and obtain audit evidence that is sufficient and appropriate to provide a basis for our opinion. The risk of not detecting a material misstatement resulting from fraud is higher than for one resulting from error, as fraud may involve collusion, forgery, intentional omissions, misrepresentations, or the override of internal control.
- Obtain an understanding of internal control relevant to the audit in order to design audit procedures that are appropriate in the circumstances, but not for the purpose of expressing an opinion on the effectiveness of the Company's internal control.
- Evaluate the appropriateness of accounting policies used and the reasonableness of accounting estimates and related disclosures made by management.
- Conclude on the appropriateness of management's use of the going concern basis of accounting and, based on the audit evidence obtained, whether a material uncertainty exists related to events or conditions that may cast significant doubt on the Company's ability to continue as a going concern. If we conclude that a material uncertainty exists, we are required to draw attention in our auditor's report to the related disclosures in the financial statements or, if such disclosures are inadequate, to modify our opinion. Our conclusions are based on the audit evidence obtained up to the date of our auditor's report. However, future events or conditions may cause the Company to cease to continue as a going concern.
- Evaluate the overall presentation, structure and content of the financial statements, including the disclosures, and whether the financial statements represent the underlying transactions and events in a manner that achieves fair presentation.

We communicate with those charged with governance regarding, among other matters, the planned scope and timing of the audit and significant audit findings, including any significant deficiencies in internal control that we identify during our audit.

We also provide those charged with governance with a statement that we have complied with relevant ethical requirements regarding independence, and to communicate with them all relationships and other matters that may reasonably be thought to bear on our independence, and where applicable, related safeguards.

The engagement partner on the audit resulting in this independent auditor's report is Anna C. Moreton.

Baker Tilly WM LLP

CHARTERED PROFESSIONAL ACCOUNTANTS

Vancouver, B.C.
January 8, 2021

Snowy Owl Gold Corp.
(formerly 56 Acquisitions Inc.)
Statements of Financial Position
(Stated in Canadian Dollars)

	Notes	May 31, 2020	May 31, 2019
ASSETS			
Current assets			
Cash		\$ 119,551	\$ 73,466
Exploration and evaluation assets	4	325,000	-
TOTAL ASSETS		\$ 444,551	\$ 73,466
LIABILITIES AND EQUITY			
Current liabilities			
Trade and other payables	7	\$ 42,632	\$ -
Shareholders' equity			
Common shares	5	375,000	50,000
Share subscriptions received	11	50,000	-
Special warrants	5	30,373	30,373
Deficit		(53,454)	(6,907)
Total equity		401,919	73,466
TOTAL LIABILITIES AND EQUITY		\$ 444,551	\$ 73,466
Nature and continuance of operations	1		
Subsequent events	11		

Approved on behalf of the Board of Directors:

"David Patterson"

David Patterson, Director

"Raymond Wladichuk"

Raymond Wladichuk, Director

Snowy Owl Gold Corp.
(formerly 56 Acquisitions Inc.)
Statements of Loss and Comprehensive Loss
(Stated in Canadian Dollars)

	Notes	Year ended May 31, 2020	Period from incorporation on November 9, 2018 to May 31, 2019
Expenses			
General and administrative		\$ 1,575	\$ 1,907
Professional fees		44,972	5,000
Loss and comprehensive loss for the year		\$ (46,547)	\$ (6,907)
Weighted average number of common shares outstanding			
	5		
Basic		2,799,180	2,000,000
Diluted		2,799,180	2,000,000
Basic and diluted loss per common share	5	\$ (0.02)	\$ (0.00)

The accompanying notes are an integral part of these financial statements.

Snowy Owl Gold Corp.
(formerly 56 Acquisitions Inc.)

Statements of Changes in Shareholders' Equity

(Stated in Canadian Dollars)

	Common Shares		Special Warrants	Share Subscriptions Received	Deficit	Total
	Number	Amount				
Balance at November 9, 2018	-	\$ -	\$ -	\$ -	\$ -	\$ -
Issue of common shares for cash	1,800,000	45,000	-	-	-	45,000
Issue of common shares for services	200,000	5,000	-	-	-	5,000
Issue of special warrants for cash	-	-	33,250	-	-	33,250
Special warrant issue costs	-	-	(2,877)	-	-	(2,877)
Loss for the period	-	-	-	-	(6,907)	(6,907)
Balance at May 31, 2019	2,000,000	50,000	30,373	-	(6,907)	73,466
Issue of common shares for exploration and evaluation assets	6,500,000	325,000	-	-	-	325,000
Share subscriptions received	-	-	-	50,000	-	50,000
Loss for the year	-	-	-	-	(46,547)	(46,547)
Balance at May 31, 2020	8,500,000	\$ 375,000	\$ 30,373	\$ 50,000	\$ (53,454)	\$ 401,919

The accompanying notes are an integral part of these financial statements.

Snowy Owl Gold Corp.
(formerly 56 Acquisitions Inc.)
Statements of Cash Flows
(Stated in Canadian Dollars)

	Year ended May 31, 2020	Period from incorporation on November 9, 2018 to May 31, 2019
Operating activities		
Loss	\$ (46,547)	\$ (6,907)
Item not involving cash:		
Issue of common shares for services	-	5,000
Changes in non-cash working capital item:		
Trade and other payables	42,632	-
Net cash used in operating activities	(3,915)	(1,907)
Financing activities		
Share subscriptions received	50,000	-
Proceeds from issuance of common shares, net of issue costs	-	45,000
Proceeds from issuance of special warrants, net of issue costs	-	30,373
Net cash provided by financing activities	50,000	75,373
Change in cash during the period	46,085	73,466
Cash, beginning of period	73,466	-
Cash, end of period	\$ 119,551	\$ 73,466
Supplemental Cash Flow Information		
Income taxes paid	\$ -	\$ -
Interest paid (received)	\$ -	\$ -
Non-cash Financing and Investing Activities		
Issuance of common shares for exploration and evaluation assets	\$ 325,000	\$ -
Issuance of special warrants for issue costs	\$ -	\$ 7,500

The accompanying notes are an integral part of these financial statements.

Snowy Owl Gold Corp.
(formerly 56 Acquisitions Inc.)
Notes to the Financial Statements
May 31, 2020 and 2019
(Stated in Canadian Dollars)

1. Nature and Continuance of Operations

Snowy Owl Gold Corp. (formerly 56 Acquisitions Inc.) (the “Company”) was incorporated on November 9, 2018 pursuant to the Business Corporations Act (British Columbia). On May 20, 2020, the Company changed its name from 56 Acquisitions Inc. to Snowy Owl Gold Corp. The Company is presently pursuing a listing on the Canadian Securities Exchange (“CSE”).

These financial statements have been prepared using accounting policies in compliance with International Financial Reporting Standards (“IFRS”) as issued by the International Accounting Standards Board (“IASB”) on the assumption that the Company will continue as a going concern and realize its assets and discharge its liabilities in the normal course of business rather than through a process of forced liquidation.

The Company’s principal business activities include the acquisition and exploration of mineral property assets. As at May 31, 2020, the Company had not yet determined whether the Company’s mineral property asset contains ore reserves that are economically recoverable. The recoverability of amounts shown for exploration and evaluation assets is dependent upon the discovery of economically recoverable reserves, confirmation of the Company’s interest in the underlying mineral claims, the ability of the Company to obtain the necessary financing to complete the development of and the future profitable production from the property or realizing proceeds from its disposition. The outcome of these matters cannot be predicted at this time.

During the first quarter of 2020, there was a global outbreak of a novel coronavirus identified as “COVID-19”. On March 11, 2020, the World Health Organization declared a global pandemic. In order to combat the spread of COVID-19, governments worldwide have enacted emergency measures including travel bans, legally enforced or self-imposed quarantine periods, social distancing and business and organization closures. These measures have caused material disruptions to businesses, governments and other organizations resulting in an economic slowdown and increased volatility in national and global equity and commodity markets.

Central banks and governments, including Canadian federal and provincial governments, have reacted with significant monetary and fiscal interventions designed to stabilize economic conditions. The duration and impact of the COVID-19 outbreak is unknown at this time, as is the efficacy of any interventions. It is not possible to reliably estimate the length and severity of these developments and the impact on the financial results and condition of the Company and its operations in future periods.

As at May 31, 2020, the Company had not yet achieved profitable operations, has accumulated losses of \$53,454 since inception, and expects to incur further losses in the development of its business. These factors indicate a material uncertainty that may cast substantial doubt on the Company’s ability to continue as a going concern. The Company’s continuation as a going concern is primarily dependent upon its ability to raise financing from equity markets or borrowings and upon successful results from its mineral property exploration activities. While the Company has been successful in securing financings in the past, there is no assurance that it will be able to do so in the future. Accordingly, these financial statements do not give effect to adjustments, if any, that would be necessary should the Company be unable to continue as a going concern. If the going concern assumption was not used, then the adjustments required to report the Company’s assets and liabilities on a liquidation basis could be material to these financial statements.

The office of the Company is located at 1100 – 1111 Melville Street, Vancouver, BC, V6E 2Y3.

Snowy Owl Gold Corp.
(formerly 56 Acquisitions Inc.)
Notes to the Financial Statements
May 31, 2020 and 2019
(Stated in Canadian Dollars)

2. Basis of Preparation

a) Statement of compliance

The Company has prepared its financial statements in accordance with International Financial Reporting Standards (“IFRS”) issued by the International Accounting Standards Board (“IASB”) and Interpretations of the IFRS Interpretations Committee (“IFRICs”).

b) Basis of presentation

The financial statements are presented in Canadian dollars and all values are rounded to the nearest dollar except where otherwise indicated. The financial statements have been prepared on an accrual basis and are based on historical costs except for certain financial instruments, which are measured at fair value, as explained in the accounting policies set out in note 3.

c) Approval of the financial statements

The financial statements of the Company for the year ended May 31, 2020 and period ended from incorporation on November 9, 2018 to May 31, 2019 were approved and authorized for issue by the Board of Directors on January 8, 2021.

d) Recent accounting pronouncements and changes to accounting policies

During the year ended May 31, 2020, the Company adopted the following new accounting pronouncements:

- i) IFRS 16 Leases – In January 2016, the IASB issued IFRS 16, which establishes principles for the recognition, measurement, presentation, and disclosure of leases for both the lessee and lessor. The new standard introduces a single lessee accounting model that requires the recognition of all assets and liabilities arising from a lease. IFRS 16 replaces IAS 17, IFRIC 4, SIC 15, and SIC 27 effective for annual periods on or after January 1, 2019. The Company did not have any lease contracts in place as at May 31, 2019 and did not enter into any lease contracts during the year ended May 31, 2020. As such, there was no material impact on the Company’s financial statements upon adoption of this standard.

At the date of authorization of these financial statements, the IASB and IFRIC have issued the following new and revised Standards and Interpretations which are not yet effective:

- IFRS 3 Business Combinations The definition of a business will be amended under IFRS 3. Under the amended definition, to be considered a business an acquisition must include an input and a substantive process that together significantly contribute to the ability to create outputs. The new guidance provides a framework to evaluate when an input and a substantive process are present. Under the prior definition, IFRS 3 stated that a business need not include all of the inputs or processes that the seller used in operating that business “if market participants are capable of acquiring the business and continuing to produce outputs, for example, by integrating the business with their own inputs and processes”.

Snowy Owl Gold Corp.
(formerly 56 Acquisitions Inc.)
Notes to the Financial Statements
May 31, 2020 and 2019
(Stated in Canadian Dollars)

2. Basis of Preparation (cont'd)

The reference to such integration is now deleted from IFRS 3 in the amendment and the assessment must be based on what has been acquired in its current state and condition. This amendment will be applied prospectively to future acquisitions (effective for annual periods on or after January 1, 2020).

The Company has not early adopted this standard and does not expect there to be a material impact on the results and financial position of the Company upon adoption.

3. Summary of Significant Accounting Policies

a) Cash

Cash in the statements of financial position comprise cash at banks, or held in trust, and short term deposits with an original maturity of three months or less, which are readily convertible into a known amount of cash, and subject to insignificant risk of changes in fair value.

b) Foreign currencies

The financial statements are presented in Canadian dollars. The Company's functional currency is the Canadian dollar, which is the currency of the primary economic environment in which the Company operates.

Transactions in foreign currencies are initially recorded at the functional currency rate at the date of the transaction. Monetary assets and liabilities denominated in foreign currencies are retranslated to the functional currency rate of exchange at the date of the statement of financial position.

Non-monetary items that are measured in terms of historical cost in a foreign currency are translated using the exchange rates as at the dates of the initial transactions. Non-monetary items measured at fair value in a foreign currency are translated using the exchange rates at the date when the fair value is determined.

c) Exploration and evaluation expenditures

Costs incurred before the Company has obtained the legal rights to explore an area are expensed in the period in which they are incurred.

Once the legal right to explore a property has been acquired, costs to acquire the property along with costs directly related to exploration and evaluation expenditures ("E&E") are recognized and capitalized. These direct expenditures include such costs as materials used, surveying costs, drilling costs, payments made to contractors and depreciation on plant and equipment during the exploration phase. Costs not directly attributable to exploration and evaluation activities, including general administrative overhead costs, are expensed in the period in which they occur.

Government tax credits received are recorded as a reduction to the cumulative costs incurred and capitalized on the related property.

Snowy Owl Gold Corp.
(formerly 56 Acquisitions Inc.)
Notes to the Financial Statements
May 31, 2020 and 2019
(Stated in Canadian Dollars)

3. Summary of Significant Accounting Policies (cont'd)

When a project is deemed to no longer have commercially viable prospects to the Company, exploration and evaluation expenditures in respect of that project are deemed to be impaired. As a result, those exploration and evaluation expenditure costs, in excess of estimated recoveries, are charged to profit or loss.

The Company assesses exploration and evaluation assets for impairment when facts and circumstances suggest that the carrying amount of an asset may exceed its recoverable amount. The recoverable amount is the higher of the asset's fair value less costs to sell and value in use.

Once the technical feasibility and commercial viability of the extraction of mineral resources in an area of interest are demonstrable, exploration and evaluation assets attributable to that area of interest are first tested for impairment and then reclassified to mining property and development assets within that mining property.

Recoverability of the carrying amount of any exploration and evaluation assets is dependent on successful development and commercial exploitation, or alternatively sale of the respective areas of interest.

Mineral exploration and evaluation expenditures are classified as intangible assets.

d) Impairment of assets

The carrying amount of the Company's assets (which include exploration and evaluation assets) is reviewed at each reporting date to determine whether there is any indication of impairment. If such indication exists, the recoverable amount of the asset is estimated in order to determine the extent of the impairment loss. An impairment loss is recognized whenever the carrying amount of an asset or its cash generating unit exceeds its recoverable amount. Impairment losses are recognized in profit or loss.

The recoverable amount of assets is the greater of an asset's fair value less cost to sell and value in use. In assessing value in use, the estimated future cash flows are discounted to their present value using a pre-tax discount rate that reflects the current market assessments of the time value of money and the risks specific to the asset. For an asset that does not generate cash inflows largely independent of those from other assets, the recoverable amount is determined for the cash-generating unit to which the asset belongs. An impairment loss is only reversed if there is an indication that the impairment loss may no longer exist and there has been a change in the estimates used to determine the recoverable amount, however, not to an amount higher than the carrying amount that would have been determined had no impairment loss been recognized in previous periods.

Assets that have an indefinite useful life are not subject to amortization and are tested annually for impairment.

e) Decommissioning, restoration and similar liabilities

An obligation to incur restoration, rehabilitation and environmental costs arises when environmental disturbance is caused by the exploration or development of a mineral property interest. Such costs arising from the decommissioning of plant and other site preparation work, discounted to their net present value, are provided for and capitalized at the start of each project to the carrying amount of the asset, along with a corresponding liability as soon as the obligation to incur such costs arises. The timing of the actual expenditure is dependent on a number of factors such as the life and nature of the asset, the operating license conditions and, when applicable, the environment in which the mine operates.

Snowy Owl Gold Corp.
(formerly 56 Acquisitions Inc.)
Notes to the Financial Statements
May 31, 2020 and 2019
(Stated in Canadian Dollars)

3. Summary of Significant Accounting Policies (cont'd)

Discount rates using a pre-tax rate that reflects the time value of money are used to calculate the net present value. These costs are charged against profit or loss over the economic life of the related asset, through amortization using either the units-of-production or the straight-line method. The corresponding liability is progressively increased as the effect of discounting unwinds creating an expense recognized in profit or loss.

Decommissioning costs are also adjusted for changes in estimates. Those adjustments are accounted for as a change in the corresponding capitalized cost, except where a reduction in costs is greater than the unamortized capitalized cost of the related assets, in which case the capitalized cost is reduced to nil and the remaining adjustment is recognized in profit or loss.

The operations of the Company have been, and may in the future be, affected from time to time in varying degree by changes in environmental regulations, including those for site restoration costs. Both the likelihood of new regulations and their overall effect upon the Company are not predictable. The Company currently has no known material restoration, rehabilitation and environmental obligations.

f) Share capital

Common shares, options and warrants are classified as equity. Transaction costs directly attributable to the issue of common shares and options are recognized as a deduction from equity, net of any tax effects.

The Company bifurcates units which consist of common shares and share purchase warrants using the residual value approach, whereby it measures the common share component of the unit at fair value using market prices as input values and then allocates the residual value of the units over the fair value of the common shares to the warrant component. The value of the warrant component is credited to share-based payment reserve. When warrants are exercised, forfeited or expire, the corresponding value is transferred from share-based payment reserve to common stock.

g) Flow-through shares

Resource expenditure deductions for income tax purposes related to exploratory activities funded by flow-through share arrangements are renounced to investors in accordance with income tax legislation. Pursuant to the terms of the flow-through share agreements, these shares transfer the tax deductibility of qualifying resource expenditures to investors. On issuance, the Company bifurcates the flow-through share into: (a) a flow-through share premium equal to the estimated premium, if any, investors pay for the flow-through feature, which is recognized as a liability, and (b) share capital. Upon expenses being incurred, the Company derecognizes the liability and recognizes a deferred tax liability for the amount of tax reduction renounced to the shareholders. The premium is recognized as other income and the related deferred tax is recognized as a tax provision.

Proceeds from the issuance of flow-through shares are restricted to be used only for Canadian resource property exploration expenditures within a two-year period. The Company may also be subject to a Part XII.6 tax on flow-through proceeds renounced under the Look-back Rule, in accordance with Government of Canada flow-through regulations. When applicable, this tax is accrued as a financial expense until qualifying expenditures are incurred.

Snowy Owl Gold Corp.
(formerly 56 Acquisitions Inc.)
Notes to the Financial Statements
May 31, 2020 and 2019
(Stated in Canadian Dollars)

3. Summary of Significant Accounting Policies (cont'd)

h) Share-based payments

Employees (including directors and senior executives) of the Company may receive a portion of their remuneration in the form of share-based payments, whereby employees render services as consideration for equity instruments ("equity-settled transactions"). The costs of equity-settled transactions with employees are measured by reference to the fair value at the date on which they are granted.

In situations where equity instruments are issued for goods or services to other than employees, the transaction is measured at the fair value of the goods or services received by the Company. When the value of the goods or services cannot be specifically identified, they are measured at the fair value of the share-based payment.

The costs of equity-settled transactions are recognized, together with a corresponding increase in equity, over the period in which the performance and/or service conditions are fulfilled, ending on the date on which the relevant employees become fully entitled to the award ("vesting date"). The cumulative expense recognized for equity-settled transactions at each reporting date until the vesting date reflects the Company's best estimate of the number of equity instruments that will ultimately vest. The profit or loss charge or credit for a period represents the movement in cumulative expense recognized as at the beginning and end of that period and the corresponding amount is represented in share-based payments reserve.

No expense is recognized for awards that do not ultimately vest, except for awards where vesting is conditional upon a market condition, which are treated as vesting irrespective of whether or not the market condition is satisfied provided that all other performance and/or service conditions are satisfied.

Where the terms of an equity-settled award are modified, the minimum expense recognized is the expense as if the terms had not been modified. An additional amount is recognized on the same basis as the amount of the original award for any modification which increases the total fair value of the share-based payment arrangement or is otherwise beneficial to the employee as measured at the date of modification.

i) Taxation

Income tax expense represents the sum of tax currently payable and deferred tax.

Current income tax

Current income tax assets and liabilities for the current and prior periods are measured at the amount expected to be recovered from or paid to the taxation authorities. The tax rates and tax laws used to compute the amount are those that are substantively enacted by the date of the statement of financial position.

Deferred income tax

Deferred income taxes are provided using the liability method on temporary differences at the date of the statement of financial position between the tax bases of assets and liabilities and their carrying amounts for financial reporting purposes.

Snowy Owl Gold Corp.
(formerly 56 Acquisitions Inc.)
Notes to the Financial Statements
May 31, 2020 and 2019
(Stated in Canadian Dollars)

3. Summary of Significant Accounting Policies (cont'd)

Deferred income tax liabilities are recognized for all taxable temporary differences, except:

- where the deferred income tax liability arises from the initial recognition of goodwill or of an asset or liability in a transaction that is not a business combination and, at the time of the transaction, affects neither the accounting profit nor taxable earnings; and
- in respect of taxable temporary differences associated with investments in subsidiaries, associates and interests in joint ventures, where the timing of the reversal of the temporary differences can be controlled and it is probable that the temporary differences will not reverse in the foreseeable future.

Deferred income tax assets are recognized for all deductible temporary differences and carry forward of unused tax credits and unused tax losses, to the extent that it is probable that taxable profit will be available against which the deductible temporary differences and the carry forward of unused tax credits and unused tax losses can be utilized except:

- where the deferred income tax asset relating to the deductible temporary difference arises from the initial recognition of an asset or liability in a transaction that is not a business combination and, at the time of the transaction, affects neither the accounting profit nor taxable earnings; and
- in respect of deductible temporary differences associated with investments in subsidiaries, associates and interests in joint ventures, deferred income tax assets are recognized only to the extent that it is probable that the temporary differences will reverse in the foreseeable future and taxable profit will be available against which the temporary differences can be utilized.

The carrying amount of deferred income tax assets is reviewed at the date of each statement of financial position and reduced to the extent that it is no longer probable that sufficient taxable profit will be available to allow all or part of the deferred income tax assets to be utilized. Unrecognized deferred income tax assets are reassessed at the date of each statement of financial position and are recognized to the extent that it has become probable that future taxable profit will allow the deferred tax asset to be recovered.

Deferred income tax assets and liabilities are measured at the tax rates that are expected to apply to the year when the asset is realized or the liability is settled, based on tax rates (and tax laws) that have been enacted or substantively enacted at the date of the statement of financial position.

Deferred income tax relating to items recognized directly in equity is recognized in equity and not in the statements of loss and comprehensive loss.

Deferred income tax assets and deferred income tax liabilities are offset if, and only if, a legally enforceable right exists to set off current tax assets against current tax liabilities and the deferred tax assets and liabilities relate to income taxes levied by the same taxation authority on either the same taxable entity or different taxable entities which intend to either settle current tax liabilities and assets on a net basis, or to realize the assets and settle the liabilities simultaneously, in each future period in which significant amounts of deferred tax assets or liabilities are expected to be settled or recovered.

Snowy Owl Gold Corp.
(formerly 56 Acquisitions Inc.)
Notes to the Financial Statements
May 31, 2020 and 2019
(Stated in Canadian Dollars)

3. Summary of Significant Accounting Policies (cont'd)

j) Income (loss) per share

The Company presents basic and diluted income (loss) per share data for its common shares. Basic income (loss) per share is computed by dividing the income (loss) by the weighted average number of common shares outstanding during the period. Diluted income (loss) per share reflects the potential dilution of common share equivalents, such as outstanding stock options and share purchase warrants, in the weighted average number of common shares outstanding during the period, if dilutive.

k) Financial instruments

i) Recognition

The Company recognizes a financial asset or financial liability on the statement of financial position when it becomes party to the contractual provisions of the financial instrument. Financial assets are initially measured at fair value, and are derecognized either when the Company has transferred substantially all the risks and rewards of ownership of the financial asset, or when cash flows expire. Financial liabilities are initially measured at fair value and are derecognized when the obligation specified in the contract is discharged, cancelled or expired.

A write-off of a financial asset (or a portion thereof) constitutes a derecognition event. Write-off occurs when the Company has no reasonable expectation of recovering the contractual cash flows of a financial asset.

ii) Classification and measurement

The Company determines the classification of its financial instruments at initial recognition. Financial assets and financial liabilities are classified according to the following measurement categories:

- a) those to be measured subsequently at fair value, either through profit or loss ("FVTPL") or through other comprehensive income ("FVTOCI"); and,
- b) those to be measured subsequently at amortized cost.

The classification and measurement of financial assets after initial recognition at fair value depends on the business model for managing the financial asset and the contractual terms of the cash flows. Financial assets that are held within a business model whose objective is to collect the contractual cash flows, and that have contractual cash flows that are solely payments of principal and interest on the principal outstanding, are generally measured at amortized cost at each subsequent reporting period. All other financial assets are measured at their fair values at each subsequent reporting period, with any changes recorded through profit or loss or through other comprehensive income (which designation is made as an irrevocable election at the time of recognition).

After initial recognition at fair value, financial liabilities are classified and measured at either:

- i) amortized cost;
- ii) FVTPL, if the Company has made an irrevocable election at the time of recognition, or when required (for items such as instruments held for trading or derivatives); or
- iii) FVTOCI, when the change in fair value is attributable to changes in the Company's credit risk.

Snowy Owl Gold Corp.
(formerly 56 Acquisitions Inc.)
Notes to the Financial Statements
May 31, 2020 and 2019
(Stated in Canadian Dollars)

3. Summary of Significant Accounting Policies (cont'd)

The Company reclassifies financial assets when and only when its business model for managing those assets changes. Financial liabilities are not reclassified.

Transaction costs that are directly attributable to the acquisition or issuance of a financial asset or financial liability classified as subsequently measured at amortized cost or FVTOCI are included in the fair value of the instrument on initial recognition. Transaction costs for financial assets and financial liabilities classified at FVTPL are expensed in profit or loss.

The Company's financial assets consists of cash which are classified and subsequently measured at amortized cost. The Company's financial liabilities consist of trade and other payables which are classified and measured at amortized cost using the effective interest rate method. The 'effective interest rate' is the rate that discounts estimated future cash payments over the expected life of the financial instrument to the gross carrying amount of the financial asset or the amortized cost of the financial liability. The effective interest rate is calculated considering all contractual terms of the financial instruments, except for the expected credit losses of financial assets. Interest expense is reported in profit or loss.

iii) Impairment

The Company assesses all information available, including on a forward-looking basis the expected credit losses associated with any financial assets carried at amortized cost. The impairment methodology applied depends on whether there has been a significant increase in credit risk. To assess whether there is a significant increase in credit risk, the Company compares the risk of a default occurring on the asset as at the reporting date with the risk of default as at the date of initial recognition based on all information available, and reasonable and supportive forward-looking information.

l) Related party transactions

Parties are considered to be related if one party has the ability, directly or indirectly, to control the other party or exercise significant influence over the other party in making financial and operating decisions. Parties are also considered to be related if they are subject to common control or common significant influence, related parties may be individuals or corporate entities. A transaction is considered to be a related party transaction when there is a transfer of resources or obligations between related parties. Related party transactions that are in the normal course of business and have commercial substance are measured at the exchange amount.

m) Significant accounting judgments and estimates

The preparation of these financial statements requires management to make judgments and estimates and form assumptions that affect the reported amounts of assets and liabilities at the date of the financial statements and reported amounts of expenses during the reporting period. On an ongoing basis, management evaluates its judgments and estimates in relation to assets, liabilities and expenses. Management uses historical experience and various other factors it believes to be reasonable under the given circumstances as the basis for its judgments and estimates. Actual outcomes may differ from these estimates under different assumptions and conditions.

The areas that require significant estimations or where measurements are uncertain are as follows:

Snowy Owl Gold Corp.
(formerly 56 Acquisitions Inc.)
Notes to the Financial Statements
May 31, 2020 and 2019
(Stated in Canadian Dollars)

3. Summary of Significant Accounting Policies (cont'd)

Share-based payments

The Company issued 6,500,000 common shares for the purchase mineral claims. The Company valued the common shares at \$0.05 per share. The price of the Company's recent special warrant financing was used as a valuation reference point.

The preparation of financial statements in accordance with IFRS requires the Company to make judgments, apart from those involving estimates, in applying accounting policies. The most significant judgments in applying accounting policies in the Company's financial statements includes:

Going Concern

The determination of the Company's ability to continue as a going concern requires significant judgment. Material adjustments to the Company's assets and liabilities would be required if the going concern assumption was not used.

Mineral Property Interests

Although the Company has taken steps to verify title to mineral properties in which it has an interest, these procedures do not guarantee the Company's title. Such properties may be subject to prior agreements or transfers and title may be affected by undetected defects.

Exploration and Evaluation Expenditures

The application of the Company's accounting policy for exploration and evaluation expenditures requires judgment in determining whether it is likely that future economic benefits will flow to the Company, which are based on assumptions about future events or circumstances. Estimates and assumptions made may change if new information becomes available. If, after the expenditure is capitalized, information becomes available suggesting that the recovery of the expenditure is unlikely, the amount capitalized is charged to profit or loss in the period the new information becomes available.

4. Exploration and Evaluation Assets

On April 17, 2020, the Company purchased 161 mineral claims covering an estimated 8,867 hectares located in southwestern Quebec, Canada. The Company purchased these claims from seven individuals and companies in consideration of 6,500,000 common shares of the Company. The Company valued the common shares at \$0.05 per share and capitalized \$325,000 to exploration and evaluation assets during the year ended May 31, 2020. The price of the Company's recent special warrant financing was used as a valuation reference point.

5. Shareholders' Equity

a) Authorized:

An unlimited number of common shares with no par value.

An unlimited number of preferred shares with no par value.

Snowy Owl Gold Corp.
(formerly 56 Acquisitions Inc.)
Notes to the Financial Statements
May 31, 2020 and 2019
(Stated in Canadian Dollars)

5. Shareholders' Equity (cont'd)

- b) During the year ended May 31, 2020 and for the period from incorporation on November 9, 2018 to May 31, 2019, the Company issued the following common shares:
- i) On April 17, 2020, the Company issued 6,500,000 common shares to seven individuals and companies for 161 mineral claims covering an estimated 8,867 hectares located in south-western Quebec, Canada. The Company valued the common shares at \$0.05 per share. The price of the Company's recent special warrant financing was used as a valuation reference point.
 - ii) During November 2018, the Company issued 2,000,000 common shares at \$0.025 per share for cash proceeds of \$45,000 and legal services provided of \$5,000.
- c) During the period from incorporation on November 9, 2018 to May 31, 2019, the Company issued the following special warrants:

On April 19, 2019, the Company issued 665,000 special warrants at \$0.05 per special warrant for gross proceeds of \$33,250. These special warrants will automatically convert into common shares of the Company on a one for one basis upon a prospectus being filed that qualifies these special warrants. The Company incurred \$2,877 of cash issuance costs and issued 150,000 special warrants as finders fees with the same terms as above.

	Number of Special Warrants
Balance at November 9, 2018	-
Issued for cash	665,000
Issued as finders fee	150,000
<hr/>	
Balance at May 31, 2019 and 2020	815,000

Snowy Owl Gold Corp.
(formerly 56 Acquisitions Inc.)
Notes to the Financial Statements
May 31, 2020 and 2019
(Stated in Canadian Dollars)

5. Shareholders' Equity (cont'd)

d) Loss per share:

Basic and diluted loss per share

	Year ended May 31, 2020	Period from incorporation on November 9, 2018 to May 31, 2019
Numerator:		
Net loss	\$ (46,547)	\$ (6,907)
Denominator:		
Weighted average number of common shares (basic)	2,799,180	2,000,000
Dilutive effect of special warrants	-	-
Weighted average number of common shares (diluted)	2,799,180	2,000,000
Basic and diluted loss per common share	\$ (0.02)	\$ (0.00)

6. Related Party Transactions

The following is a summary of the related party transactions that occurred during the year ended May 31, 2020 and for the period from incorporation on November 9, 2018 to May 31, 2019.

a) Compensation of key management personnel

The Company has determined that key management personnel consist of its Directors, the CEO and CFO.

During the year ended May 31, 2020 and for the period from incorporation on November 9, 2018 to May 31, 2019, key management personnel did not receive any short-term employee benefits from the Company. Also, key management personnel were not paid post-employment benefits, termination benefits, or other long-term benefits during these periods.

b) Other related party transactions

- i) During the year ended May 31, 2020, the Company incurred \$1,575 (2019 - \$nil) of administrative fees to a company related by a common director.
- ii) During the year ended May 31, 2020, the Company issued 1,500,000 common shares at a price of \$0.05 per share to a director of the company in exchange for mineral claims.

Snowy Owl Gold Corp.
 (formerly 56 Acquisitions Inc.)
Notes to the Financial Statements
May 31, 2020 and 2019
 (Stated in Canadian Dollars)

7. Financial Instruments

The Company is exposed to various financial risks resulting from both its operations and its investment activities. The Company's management manages financial risks. The Company does not enter into financial instruments agreements, including derivative financial instruments for speculative purposes. The Company's main financial risks exposure and its financial policies are as follows:

a) Credit risk

Credit risk is the risk that one party to a financial instrument will cause a financial loss for the other party by failing to discharge an obligation. The Company's cash is exposed to credit risk, with the carrying value being the Company's maximum exposure. The Company's cash consists of funds held in trust with the Company's corporate lawyer. Management believes the Company's exposure to credit risk is minimal.

b) Interest rate risk

Interest rate risk is the risk that the fair value or future cash flows of a financial instrument will fluctuate because of changes in market interest rates. The Company is not exposed to significant interest rate risk as cash only comprise funds held in trust with the Company's corporate lawyer as at May 31, 2020. The Company had no interest rate swaps or financial contracts in place as at or during the periods ended May 31, 2020 and 2019.

c) Liquidity risk

Liquidity risk is the risk that the Company will encounter difficulty in meeting obligations associated with financial liabilities. The Company seeks to ensure that it has sufficient capital to meet short term financial obligations after taking into account its operating obligations and cash on hand.

A breakdown of the Company's aged trade and other payables is as follows:

	Year ended May 31, 2020	Period from incorporation on November 9, 2018 to May 31, 2020
Less than 90 days	\$ 27,756	\$ -
Between 90 days and 1 year	14,876	-
Greater than 1 year	-	-
	<u>\$ 42,632</u>	<u>\$ -</u>

Fair value estimates are made at the statement of financial position date, based on relevant market information and other information about financial instruments. As at May 31, 2020 and 2019, the Company's financial instruments are cash and trade and other payables. The amounts reflected in the statement of financial position approximate their fair values due to the short-term nature of these financial instruments.

Snowy Owl Gold Corp.
 (formerly 56 Acquisitions Inc.)
Notes to the Financial Statements
May 31, 2020 and 2019
 (Stated in Canadian Dollars)

8. Capital Management

The Company's capital currently consists of common shares and special warrants and its principal source of cash is from the issuance of common shares and special warrants. The Company's capital management objectives are to safeguard its ability to continue as a going concern and to have sufficient capital to be able to acquire and explore mineral property assets. The Company does not have any externally imposed capital requirements to which it is subject. The Company manages the capital structure and makes adjustments to it in light of changes in economic conditions and the risk characteristics of the underlying assets. To maintain or adjust the capital structure, the Company may attempt to issue new shares or special warrants.

As the Company's mineral property is in the exploration stage, the Company is dependent on external financing to fund its activities. In order to carry out its operations, the Company will spend its existing working capital and raise additional amounts as needed.

9. Segmented Information

At May 31, 2020 the Company has one reportable operating segment being the acquisition and exploration of mineral property assets. All of the Company's assets are located in Canada.

An operating segment is defined as a component of the Company:

- that engages in business activities from which it may earn revenues and incur expenses;
- whose operating results are reviewed regularly by the entity's chief operating decision maker; and
- for which discrete financial information is available.

10. Income Taxes

Tax expense differs from the amount computed by applying the combined Canadian federal and provincial income tax rates, applicable to the Company, to the income (loss) before income taxes due to the following:

	Year ended May 31, 2020	Period from incorporation on November 9, 2018 to May 31, 2019
Income (loss) before income taxes	\$ (46,547)	\$ (6,907)
Canadian federal and provincial income tax rate	26.5%	26.6%
Income tax expense (recovery) based on Canadian federal and provincial income tax rates	(12,335)	(1,837)
Increase (decrease) in income taxes attributable to:		
Other	(550)	(243)
Tax benefits not recognized	12,885	2,080
Income tax (recovery)	\$ -	\$ -

Snowy Owl Gold Corp.
 (formerly 56 Acquisitions Inc.)
Notes to the Financial Statements
May 31, 2020 and 2019
 (Stated in Canadian Dollars)

10. Income Taxes (cont'd)

Unrecognized deductible temporary differences and unused tax losses are attributable to the following:

	Year ended May 31, 2020	Period from incorporation on April 16, 2020 to May 31, 2019
Share issuance costs	\$ 1,958	\$ 2,518
Non-capital loss carry forwards	14,957	2,080
	16,915	4,598
Less: tax benefits not recognized	(16,915)	(4,598)
	\$ -	\$ -

At May 31, 2020 the Company has non-capital losses of approximately \$57,000 available for carry-forward to reduce future years' income taxes, expiring on May 31, 2040.

11. Subsequent Events

On June 4, 2020, the Company adopted an option plan in accordance with the rules and policies of the CSE. The terms of any award are determined by the Board, provided that no options may be granted with an exercise price lower than the greater of the closing market price of the Common Shares on (a) the trading day prior to the date of the grant of the stock options, and (b) the date of grant of the stock options, and the term may not exceed 10 years. The aggregate number of securities available for issuance under the plan may not exceed 10% of the number of common shares of the Company issued and outstanding from time to time.

On June 4, 2020, the Company granted 1,000,000 stock options to Directors and officers, each option is exercisable to acquire a common share at an exercise price of \$0.10 expiring June 4, 2025.

On June 25, 2020, the Company completed a private placement of: (i) 7,000,000 units (each a "Unit") at a price of \$0.05 per Unit; and (ii) 3,250,000 common shares on a "flow-through" basis (each a "FT Share") at a price of \$0.05 per FT Share, for aggregate gross proceeds of \$512,500. Each Unit consists of one common share and one-half of one transferable common share purchase warrant (each whole warrant, a "Warrant"). Each Warrant entitles the holder thereof to acquire one additional common share (the "Warrant Shares") in the capital of the Company at a price of \$0.10 per Warrant Share until June 25, 2022.

In connection with the June 25, 2020 private placement, the Company paid finder's fees to registered dealers totalling \$36,600 in cash and issued an aggregate of 364,000 warrants and 372,000 common shares. The 364,000 warrants issued as finder's fees have an exercise price of \$0.10 and expire June 25, 2022. All of the securities issued in connection with the private placement are subject to a statutory hold period.

Snowy Owl Gold Corp.
(formerly 56 Acquisitions Inc.)
Notes to the Financial Statements
May 31, 2020 and 2019
(Stated in Canadian Dollars)

11. Subsequent Events (cont'd)

On December 15, 2020, the Company issued 5,300,000 units (each a "Unit") at a price of \$0.05 per Unit for gross proceeds of \$265,000. Each Unit consists of one common share and one-half of one transferable common share purchase warrant (each whole warrant, a "Warrant"). Each Warrant entitles the holder thereof to acquire one additional common share (the "Warrant Shares") in the capital of the Company at a price of \$0.10 per Warrant Share until December 15, 2022.

On December 15, 2020, the Company issued 1,970,000 common shares on a "flow-through" basis (each a "FT Share") at a price of \$0.05 per FT Share for gross proceeds of \$98,500.

In connection with the two December 15, 2020 private placements, the Company issued finder's fees to registered dealers an aggregate of 564,000 warrants and 564,000 common shares. The 564,000 warrants issued as finder's fees have an exercise price of \$0.10 and expire December 15, 2022.

Snowy Owl Gold Corp.

**Condensed Interim Financial Statements
For the Three Months Ended August 31, 2020 and 2019
(Unaudited)**

Snowy Owl Gold Corp.

Interim Statements of Financial Position

(Stated in Canadian Dollars)

(Unaudited)

	Notes	August 31, 2020	May 31, 2020
ASSETS			
Current assets			
Cash		\$ 495,973	\$ 119,551
Exploration and evaluation assets			
	3	414,000	325,000
TOTAL ASSETS		\$ 909,973	\$ 444,551
LIABILITIES AND EQUITY			
Current liabilities			
Trade and other payables		\$ 141,966	\$ 42,632
Shareholders' equity			
Common shares	4	834,902	375,000
Share subscriptions received		-	50,000
Special warrants	4	30,373	30,373
Share-based payments reserve	5	29,300	-
Deficit		(126,568)	(53,454)
Total equity		768,007	401,919
TOTAL LIABILITIES AND EQUITY		\$ 909,973	\$ 444,551
Nature and continuance of operations	1		
Subsequent events	7		

Approved on behalf of the Board of Directors:

"David Patterson"

David Patterson, Director

"Raymond Wladichuk"

Raymond Wladichuk, Director

Snowy Owl Gold Corp.

Interim Statements of Loss and Comprehensive Loss

(Stated in Canadian Dollars)

(Unaudited)

	Notes	Three months ended August 31,	
		2020	2019
Expenses			
General and administrative		\$ 28	\$ 525
Professional fees		48,186	-
Share-based payments		24,900	-
Loss and comprehensive loss for the period		\$ (73,114)	\$ (525)
Weighted average number of common shares outstanding	4		
Basic		16,351,043	2,000,000
Diluted		16,351,043	2,000,000
Basic and diluted loss per common share	4	\$ (0.00)	\$ (0.00)

The accompanying notes are an integral part of these condensed interim financial statements.

Snowy Owl Gold Corp.

Interim Statements of Changes in Shareholders' Equity

(Stated in Canadian Dollars)

(Unaudited)

	Common Shares		Special Warrants	Share Subscriptions Received	Share-based Payments Reserve	Deficit	Total
	Number	Amount					
Balance at May 31, 2020	8,500,000	\$ 375,000	\$ 30,373	\$ 50,000	\$ -	\$ (53,454)	\$ 401,919
Common shares issued for cash	10,250,000	512,500	-	(50,000)	-	-	462,500
Share issue costs	372,000	(52,598)	-	-	4,400	-	(48,198)
Share-based payments	-	-	-	-	24,900	-	24,900
Loss for the period	-	-	-	-	-	(73,114)	(73,114)
Balance at August 31, 2020	19,122,000	\$ 834,902	\$ 30,373	\$ -	\$ 29,300	\$ (126,568)	\$ 768,007
	Common Shares		Special Warrants	Share Subscriptions Received	Share-based Payments Reserve	Deficit	Total
	Number	Amount					
Balance at May 31, 2019	2,000,000	\$ 50,000	\$ 30,373	\$ -	\$ -	\$ (6,907)	\$ 73,466
Loss for the period	-	-	-	-	-	(525)	(525)
Balance at August 31, 2019	2,000,000	\$ 50,000	\$ 30,373	\$ -	\$ -	\$ (7,432)	\$ 72,941

The accompanying notes are an integral part of these condensed interim financial statements.

Snowy Owl Gold Corp.
Interim Statements of Cash Flows
(Stated in Canadian Dollars)
(Unaudited)

	Three months ended August 31,	
	2020	2019
Operating activities		
Loss for the period	\$ (73,114)	\$ (525)
Item not involving cash:		
Share-based payments	24,900	-
Changes in non-cash working capital item:		
Trade and other payables	50,334	525
Net cash provided by operating activities	2,120	-
Investing activities		
Expenditures on exploration and evaluation assets	(40,000)	-
Net cash used in investing activities	(40,000)	-
Financing activities		
Proceeds from issuance of common shares, net of issue costs	414,302	-
Net cash provided by financing activities	414,302	-
Change in cash during the period	376,422	-
Cash, beginning of period	119,551	73,466
Cash, end of period	\$ 495,973	\$ 73,466
Supplemental Cash Flow Information		
Income taxes paid	\$ -	\$ -
Interest paid (received)	\$ -	\$ -
Non-cash Financing and Investing Activities		
Trade and other payables included in exploration and evaluation assets	\$ 49,000	\$ -

The accompanying notes are an integral part of these condensed interim financial statements.

Snowy Owl Gold Corp.

Notes to the Condensed Interim Financial Statements

August 31, 2020 and 2019

(Stated in Canadian Dollars)

(Unaudited)

1. Nature and Continuance of Operations

Snowy Owl Gold Corp. (formerly 56 Acquisitions Inc.) (the "Company") was incorporated on November 9, 2018 pursuant to the Business Corporations Act (British Columbia). On May 20, 2020, the Company changed its name from 56 Acquisitions Inc. to Snowy Owl Gold Corp. The Company is presently pursuing a listing on the Canadian Securities Exchange ("CSE").

These financial statements have been prepared using accounting policies in compliance with International Financial Reporting Standards ("IFRS") as issued by the International Accounting Standards Board ("IASB") on the assumption that the Company will continue as a going concern and realize its assets and discharge its liabilities in the normal course of business rather than through a process of forced liquidation.

The Company's principal business activities include the acquisition and exploration of mineral property assets. As at May 31, 2020, the Company had not yet determined whether the Company's mineral property asset contains ore reserves that are economically recoverable. The recoverability of amounts shown for exploration and evaluation assets is dependent upon the discovery of economically recoverable reserves, confirmation of the Company's interest in the underlying mineral claims, the ability of the Company to obtain the necessary financing to complete the development of and the future profitable production from the property or realizing proceeds from its disposition. The outcome of these matters cannot be predicted at this time.

During the first quarter of 2020, there was a global outbreak of a novel coronavirus identified as "COVID-19". On March 11, 2020, the World Health Organization declared a global pandemic. In order to combat the spread of COVID-19, governments worldwide have enacted emergency measures including travel bans, legally enforced or self-imposed quarantine periods, social distancing and business and organization closures. These measures have caused material disruptions to businesses, governments and other organizations resulting in an economic slowdown and increased volatility in national and global equity and commodity markets.

Central banks and governments, including Canadian federal and provincial governments, have reacted with significant monetary and fiscal interventions designed to stabilize economic conditions. The duration and impact of the COVID-19 outbreak is unknown at this time, as is the efficacy of any interventions. It is not possible to reliably estimate the length and severity of these developments and the impact on the financial results and condition of the Company and its operations in future periods.

As at August 31, 2020, the Company had not yet achieved profitable operations, has accumulated losses of \$126,568 since inception, and expects to incur further losses in the development of its business. These factors indicate a material uncertainty that may cast substantial doubt on the Company's ability to continue as a going concern. The Company's continuation as a going concern is primarily dependent upon its ability to raise financing from equity markets or borrowings and upon successful results from its mineral property exploration activities. While the Company has been successful in securing financings in the past, there is no assurance that it will be able to do so in the future. Accordingly, these financial statements do not give effect to adjustments, if any, that would be necessary should the Company be unable to continue as a going concern. If the going concern assumption was not used, then the adjustments required to report the Company's assets and liabilities on a liquidation basis could be material to these financial statements.

The office of the Company is located at 1100 – 1111 Melville Street, Vancouver, BC, V6E 2Y3.

Snowy Owl Gold Corp.
Notes to the Condensed Interim Financial Statements
August 31, 2020 and 2019
(Stated in Canadian Dollars)
(Unaudited)

2. Basis of Preparation

a) Statement of compliance

These condensed interim financial statements, including comparatives, are unaudited and have been prepared in accordance with International Accounting Standard 34, *Interim Financial Reporting* ("IAS 34") using accounting policies consistent with the International Financial Reporting Standards ("IFRS") issued by the International Accounting Standards Board ("IASB") and Interpretations of the IFRS Interpretations Committee ("IFRIC").

b) Basis of presentation

These condensed interim financial statements have been prepared on the basis of accounting policies and methods of computation consistent with those applied in the Company's financial statements for the year ended May 31, 2020, with the exception of the following:

- IFRS 3 *Business Combinations* ("IFRS 3"), described in note 2(c).

The preparation of interim financial statements in conformity with IAS 34 requires management to make judgments, estimates and assumptions that affect the application of policies and reported amounts of assets and liabilities, income and expenses. Actual results may differ from these estimates. These condensed consolidated interim financial statements do not include all of the information required for full annual financial statements.

These condensed interim financial statements, including comparatives, have been prepared on the basis of IFRS standards that are published and effective at the time of preparation.

These condensed interim financial statements have been prepared on the historical cost basis except for certain financial instruments, which are measured at fair value.

c) Recent accounting pronouncements and changes to accounting policies

IFRS 3 – The definition of a business will be amended under IFRS 3. Under the amended definition, to be considered a business an acquisition must include an input and a substantive process that together significantly contribute to the ability to create outputs. The new guidance provides a framework to evaluate when an input and a substantive process are present. Under the prior definition, IFRS 3 stated that a business need not include all of the inputs or processes that the seller used in operating that business "if market participants are capable of acquiring the business and continuing to produce outputs, for example, by integrating the business with their own inputs and processes".

The reference to such integration is now deleted from IFRS 3 in the amendment and the assessment must be based on what has been acquired in its current state and condition. This amendment did not materially impact the Company's condensed interim financial statements upon adoption of this standard.

d) Approval of the condensed consolidated interim financial statements

The condensed interim financial statements of the Company for the three months ended August 31, 2020 were reviewed, approved and authorized for issue by the board of directors on January 8, 2021.

Snowy Owl Gold Corp.

Notes to the Condensed Interim Financial Statements

August 31, 2020 and 2019

(Stated in Canadian Dollars)

(Unaudited)

3. Exploration and Evaluation Assets

On April 17, 2020, the Company purchased 161 mineral claims covering an estimated 8,867 hectares located in south-western Quebec, Canada. The mineral claims are located in close proximity to the Urban-Barry Gold Camp.

The Company purchased these claims from seven individuals and companies in consideration of 6,500,000 common shares of the Company. The Company valued the common shares at \$0.05 per share and capitalized \$325,000 to exploration and evaluation assets during the year ended May 31, 2020.

The Company has incurred the following expenditures during the year ended May 31, 2020 and three months ended August 31, 2020:

	Exploration & evaluation Assets
Balance at May 31, 2019	\$ -
Land acquisition costs	325,000
Balance at May 31, 2020	325,000
Geology, compliance and reporting	5,000
Geophysics	84,000
Balance at August 31, 2020	\$ 414,000

4. Shareholders' Equity

a) Authorized:

An unlimited number of common shares with no par value.

An unlimited number of preferred shares with no par value.

b) During the three months ended August 31, 2020, the Company issued the following common shares:

i) On June 25, 2020, the Company issued 7,000,000 units (each a "Unit") at a price of \$0.05 per Unit for gross proceeds of \$350,000. Each Unit consists of one common share and one-half of one transferable common share purchase warrant (each whole warrant, a "Warrant"). Each Warrant entitles the holder thereof to acquire one additional common share (the "Warrant Shares") in the capital of the Company at a price of \$0.10 per Warrant Share until June 25, 2022.

ii) On June 25, 2020, the Company issued 3,250,000 common shares on a "flow-through" basis (each a "FT Share") at a price of \$0.05 per FT Share for gross proceeds of \$162,500.

iii) In connection with the two private placements, the Company paid finder's fees to registered dealers totaling \$36,600 in cash and issued an aggregate of 364,000 warrants and 372,000 common shares. The 364,000 warrants issued as finder's fees have an exercise price of \$0.10 and expire June 25, 2022 (note 5).

Snowy Owl Gold Corp.

Notes to the Condensed Interim Financial Statements

August 31, 2020 and 2019

(Stated in Canadian Dollars)

(Unaudited)

4. Shareholders' Equity (cont'd)

- c) On April 19, 2019, the Company issued 665,000 special warrants at \$0.05 per special warrant for gross proceeds of \$33,250. These special warrants will automatically convert into common shares of the Company on a one for one basis upon a prospectus being filed that qualifies these special warrants. The Company incurred \$2,877 of cash issuance costs and issued 150,000 special warrants as finders fees with the same terms as above.

	Number of Special Warrants
Balance at November 9, 2018	-
Issued for cash	665,000
Issued as finders fee	150,000
Balance at August 31, 2020 and May 31, 2020	815,000

- d) Loss per share:

Basic and diluted loss per share

	Three months ended August 31,	
	2020	2019
Numerator:		
Net loss	\$ (48,214)	\$ (525)
Denominator:		
Weighted average number of common shares (basic)	16,351,043	2,000,000
Dilutive effect of warrants	-	-
Weighted average number of common shares (diluted)	16,351,043	2,000,000
Basic and diluted income (loss) per common share	\$ -	\$ -

5. Share-based Payments

- a) Stock options:

On June 4, 2020, the Company adopted an option plan in accordance with the rules and policies of the CSE. The terms of any award are determined by the Board, provided that no options may be granted with an exercise price lower than the greater of the closing market price of the Common Shares on (a) the trading day prior to the date of the grant of the stock options, and (b) the date of grant of the stock options; and the term may not exceed 10 years. The aggregate number of securities available for issuance under the plan may not exceed 10% of the number of common shares of the Company issued and outstanding from time to time.

On June 4, 2020, the Company granted 1,000,000 stock options to Directors and officers, each option is exercisable to acquire a common share at an exercise price of \$0.10 expiring June 4, 2025. The stock options vested immediately upon grant. The Company recognized \$24,900 for share-based payments.

Snowy Owl Gold Corp.

Notes to the Condensed Interim Financial Statements

August 31, 2020 and 2019

(Stated in Canadian Dollars)

(Unaudited)

5. Share-based Payments (cont'd)

The fair value of the 1,000,000 stock options was estimated using the Black-Scholes option pricing model assuming a risk-free interest rate of 0.46%, a dividend yield of nil, an expected annual volatility of the Company's share price of 80% and an expected life of 5 years. The fair value of the stock options was \$0.025 per option. The expected volatility assumption is based on the estimated volatility of early stage mineral exploration companies. The risk-free interest rate is based on yield curves on the Canadian government zero-coupon bonds or Canadian government treasury bills with a remaining term equal to the warrants' expected life.

b) Finder's warrants:

The fair value of the 364,000 finder's warrants was estimated using the Black-Scholes option pricing model assuming a risk-free interest rate of 0.26%, a dividend yield of nil, an expected annual volatility of the Company's share price of 80% and an expected life of 2 years. The fair value of the finder's warrants was \$0.01 per warrant. The expected volatility assumption is based on the estimated volatility of early stage mineral exploration companies. The risk-free interest rate is based on yield curves on the Canadian government zero-coupon bonds or Canadian government treasury bills with a remaining term equal to the warrants' expected life.

6. Financial Instruments – Fair Value

Fair value estimates are made at the condensed interim statement of financial position date, based on relevant market information and other information about financial instruments. As at August 31, 2020, the Company's financial instruments are cash and trade and other payables. The amounts reflected in the condensed interim statements of financial position are carrying amounts and approximate their fair values due to their short-term nature.

7. Subsequent Events

On December 15, 2020, the Company issued 5,300,000 units (each a "Unit") at a price of \$0.05 per Unit for gross proceeds of \$265,000. Each Unit consists of one common share and one-half of one transferable common share purchase warrant (each whole warrant, a "Warrant"). Each Warrant entitles the holder thereof to acquire one additional common share (the "Warrant Shares") in the capital of the Company at a price of \$0.10 per Warrant Share until December 15, 2022.

On December 15, 2020, the Company issued 1,970,000 common shares on a "flow-through" basis (each a "FT Share") at a price of \$0.05 per FT Share for gross proceeds of \$98,500.

In connection with the two December 15, 2020 private placements, the Company issued finder's fees to registered dealers an aggregate of 564,000 warrants and 564,000 common shares. The 564,000 warrants issued as finder's fees have an exercise price of \$0.10 and expire December 15, 2022.

SCHEDULE “B” AUDIT COMMITTEE CHARTER

The following Audit Committee Charter was adopted by the Audit Committee and the Board of Directors of Snowy Owl Gold Corp. (the “**Company**”)

- ***Mandate***

The primary function of the audit committee (the “**Committee**”) is to assist the Company’s Board of Directors in fulfilling its financial oversight responsibilities by reviewing the financial reports and other financial information provided by the Company to regulatory authorities and shareholders, the Company’s systems of internal controls regarding finance and accounting and the Company’s auditing, accounting and financial reporting processes. Consistent with this function, the Committee will encourage continuous improvement of, and should foster adherence to, the Company’s policies, procedures and practices at all levels. The Committee’s primary duties and responsibilities are to:

- serve as an independent and objective party to monitor the Company’s financial reporting and internal control system and review the Company’s financial statements;
- review and appraise the performance of the Company’s external auditors; and
- provide an open avenue of communication among the Company’s auditors, financial and senior management and the Board of Directors.

- ***Composition***

The Committee shall be comprised of a minimum three directors as determined by the Board of Directors. If the Company ceases to be a “venture issuer” (as that term is defined in National Instrument 51-102), then all of the members of the Committee shall be free from any relationship that, in the opinion of the Board of Directors, would interfere with the exercise of his or her independent judgment as a member of the Committee.

If the Company ceases to be a “venture issuer” (as that term is defined in National Instrument 51-102), then all members of the Committee shall have accounting or related financial management expertise. All members of the Committee that are not financially literate will work towards becoming financially literate to obtain a working familiarity with basic finance and accounting practices. For the purposes of the Company’s Audit Committee Charter, the definition of “financially literate” is the ability to read and understand a set of financial statements that present a breadth and level of complexity of accounting issues that are generally comparable to the breadth and complexity of the issues that can presumably be expected to be raised by the Company’s financial statements.

The members of the Committee shall be elected by the Board of Directors at its first meeting following the annual shareholders’ meeting. Unless a Chair is elected by the full Board of Directors, the members of the Committee may designate a Chair by a majority vote of the full Committee membership.

- ***Meetings***

The Committee shall meet at least twice annually, or more frequently as circumstances dictate. As part of its job to foster open communication, the Committee will meet at least annually with the CFO and the external auditors in separate sessions.

- ***Responsibilities and Duties***

To fulfill its responsibilities and duties, the Committee shall:

Documents/Reports Review

- review and update this Audit Committee Charter annually; and
- review the Company's financial statements, MD&A and any annual and interim earnings press releases before the Company publicly discloses this information and any reports or other financial information (including quarterly financial statements), which are submitted to any governmental body, or to the public, including any certification, report, opinion, or review rendered by the external auditors.

External Auditors

- review annually, the performance of the external auditors who shall be ultimately accountable to the Company's Board of Directors and the Committee as representatives of the shareholders of the Company;
- obtain annually, a formal written statement of external auditors setting forth all relationships between the external auditors and the Company, consistent with Independence Standards Board Standard 1;
- review and discuss with the external auditors any disclosed relationships or services that may impact the objectivity and independence of the external auditors;
- take, or recommend that the Company's full Board of Directors take appropriate action to oversee the independence of the external auditors, including the resolution of disagreements between management and the external auditor regarding financial reporting;
- recommend to the Company's Board of Directors the selection and, where applicable, the replacement of the external auditors nominated annually for shareholder approval;
- recommend to the Company's Board of Directors the compensation to be paid to the external auditors;
- at each meeting, consult with the external auditors, without the presence of management, about the quality of the Company's accounting principles, internal controls and the completeness and accuracy of the Company's financial statements;
- review and approve the Company's hiring policies regarding partners, employees and former partners and employees of the present and former external auditors of the Company;
- review with management and the external auditors the audit plan for the year-end financial statements and intended template for such statements; and
- review and pre-approve all audit and audit-related services and the fees and other compensation related thereto, and any non-audit services, provided by the Company's external auditors. The pre-approval requirement is waived with respect to the provision of non-audit services if:

- the aggregate amount of all such non-audit services provided to the Company constitutes not more than five percent of the total amount of revenues paid by the Company to its external auditors during the fiscal year in which the non-audit services are provided,
- such services were not recognized by the Company at the time of the engagement to be non-audit services, and
- such services are promptly brought to the attention of the Committee by the Company and approved prior to the completion of the audit by the Committee or by one or more members of the Committee who are members of the Board of Directors to whom authority to grant such approvals has been delegated by the Committee.

Provided the pre-approval of the non-audit services is presented to the Committee's first scheduled meeting following such approval such authority may be delegated by the Committee to one or more independent members of the Committee.

Financial Reporting Processes

- in consultation with the external auditors, review with management the integrity of the Company's financial reporting process, both internal and external;
- consider the external auditors' judgments about the quality and appropriateness of the Company's accounting principles as applied in its financial reporting;
- consider and approve, if appropriate, changes to the Company's auditing and accounting principles and practices as suggested by the external auditors and management;
- review significant judgments made by management in the preparation of the financial statements and the view of the external auditors as to appropriateness of such judgments;
- following completion of the annual audit, review separately with management and the external auditors any significant difficulties encountered during the course of the audit, including any restrictions on the scope of work or access to required information;
- review any significant disagreement among management and the external auditors in connection with the preparation of the financial statements;
- review with the external auditors and management the extent to which changes and improvements in financial or accounting practices have been implemented;
- review any complaints or concerns about any questionable accounting, internal accounting controls or auditing matters;
- review certification process;
- establish a procedure for the receipt, retention and treatment of complaints received by the Company regarding accounting, internal accounting controls or auditing matters; and
- establish a procedure for the confidential, anonymous submission by employees of the Company of concerns regarding questionable accounting or auditing matters.

Other

- review any related-party transactions;
- engage independent counsel and other advisors as it determines necessary to carry out its duties; and
- to set and pay compensation for any independent counsel and other advisors employed by the Committee.

CERTIFICATE OF SNOWY OWL GOLD CORP.

Dated: January 8, 2021

This prospectus constitutes full, true and plain disclosure of all material facts relating to the securities previously issued by Snowy Owl Gold Corp. as required by the securities legislation of British Columbia.

“Raymond Wladichuk”

Raymond Wladichuk
Chief Executive Officer

“Elyssia Patterson”

Elyssia Patterson
Chief Financial Officer

ON BEHALF OF THE BOARD OF DIRECTORS

“David Patterson”

David Patterson
Director

“Edward Ierfino”

Edward Ierfino
Director

CERTIFICATE OF THE PROMOTER

Dated: January 8, 2021

This prospectus constitutes full, true and plain disclosure of all material facts relating to the securities previously issued by Snowy Owl Gold Corp. as required by the securities legislation of British Columbia.

“Solomon Elimimian”

Solomon Elimimian
Promoter