

Core Assets Diamond Drilling Extends Fe-Cu Skarn and Cu Porphyry Mineralization for 300 Metres Along Strike at the Laverdiere Project

Vancouver June 29, 2022 – Core Assets Corp., (“Core Assets” or the “Company”) (CSE:CC) (FSE:5RJ) (OTC.QB:CCOOF) is pleased to announce the completion of three additional diamond drill holes totalling 784 metres at the South Adit area of the Laverdiere Skarn-Porphyry Project (“Laverdiere”), eastern Blue Property (“Property”); Atlin Mining District of NW British Columbia.

Highlights

- The 2022 diamond drilling campaign has successfully confirmed massive to semi-massive Fe-Cu skarn and extended porphyry Cu mineralization for 300 metres along an open strike length. These holes are beginning to demonstrate wide, near surface intercepts of porphyry and skarn mineralization within an untested target. All drill holes intersected Cu mineralization and the company is eagerly anticipating assay results to plan for follow up drilling.
- LAV22-005 was drilled west at a dip of 45 degrees and intersected:
 - Intervals of marble-hosted magnetite (Fe)-chalcopyrite (Cu)±bornite (Cu)-skarn and chalcopyrite (Cu)-molybdenite (Mo)-bearing endoskarn to 97 metres depth (Figure 1).
 - Variably potassic altered porphyritic granodiorite in contact with chalcopyrite-bearing endoskarn and crosscut by local epidote, chlorite, and potassium feldspar veinlets continued to 175 metres depth (end of hole).

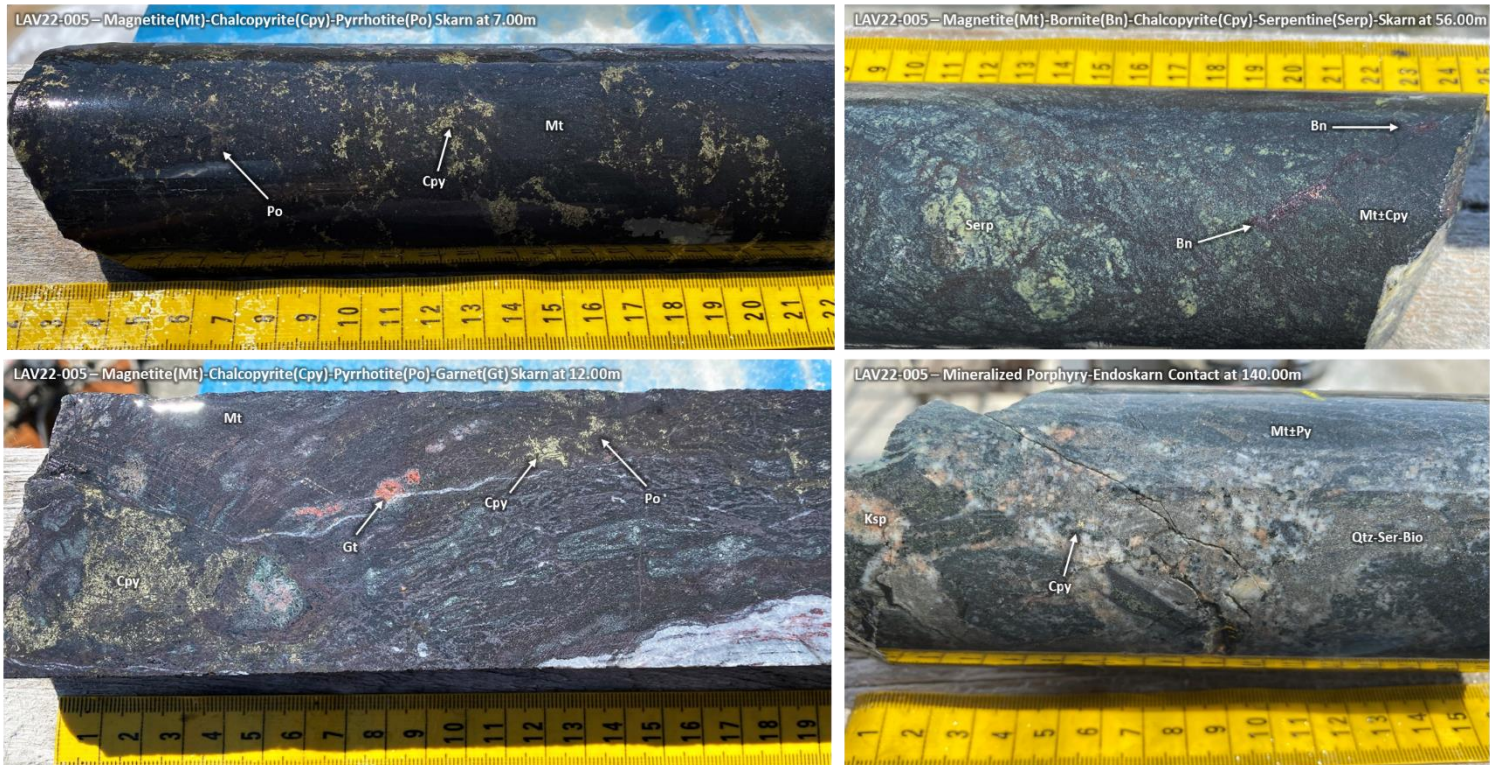


Figure 1: Photographs of HQ-sized core intervals representing upper Cu-bearing magnetite-skarn and endoskarn in diamond drillhole LAV22-005, completed at Pad 2 proximal to the historic South Adit of the Laverdiere Project in 2022.

- **LAV22-004** was collared in the same location as LAV22-005, oriented west at a dip of 60 degrees, and drilled to 309 metres depth intersecting:
 - **Intensely potassic altered granodiorite** from surface grading into alternating intervals of magnetite-bearing marble and endoskarn, dominated by a chlorite-epidote-biotite-serpentine assemblage with localized potassium feldspar and garnet (Figure 2).
 - **Fine grained and patchy chalcopyrite mineralization** from 109 metres to 262 metres depth with intermittent pyrite and lesser, localized molybdenite and pyrrhotite mineralization (Figure 2).

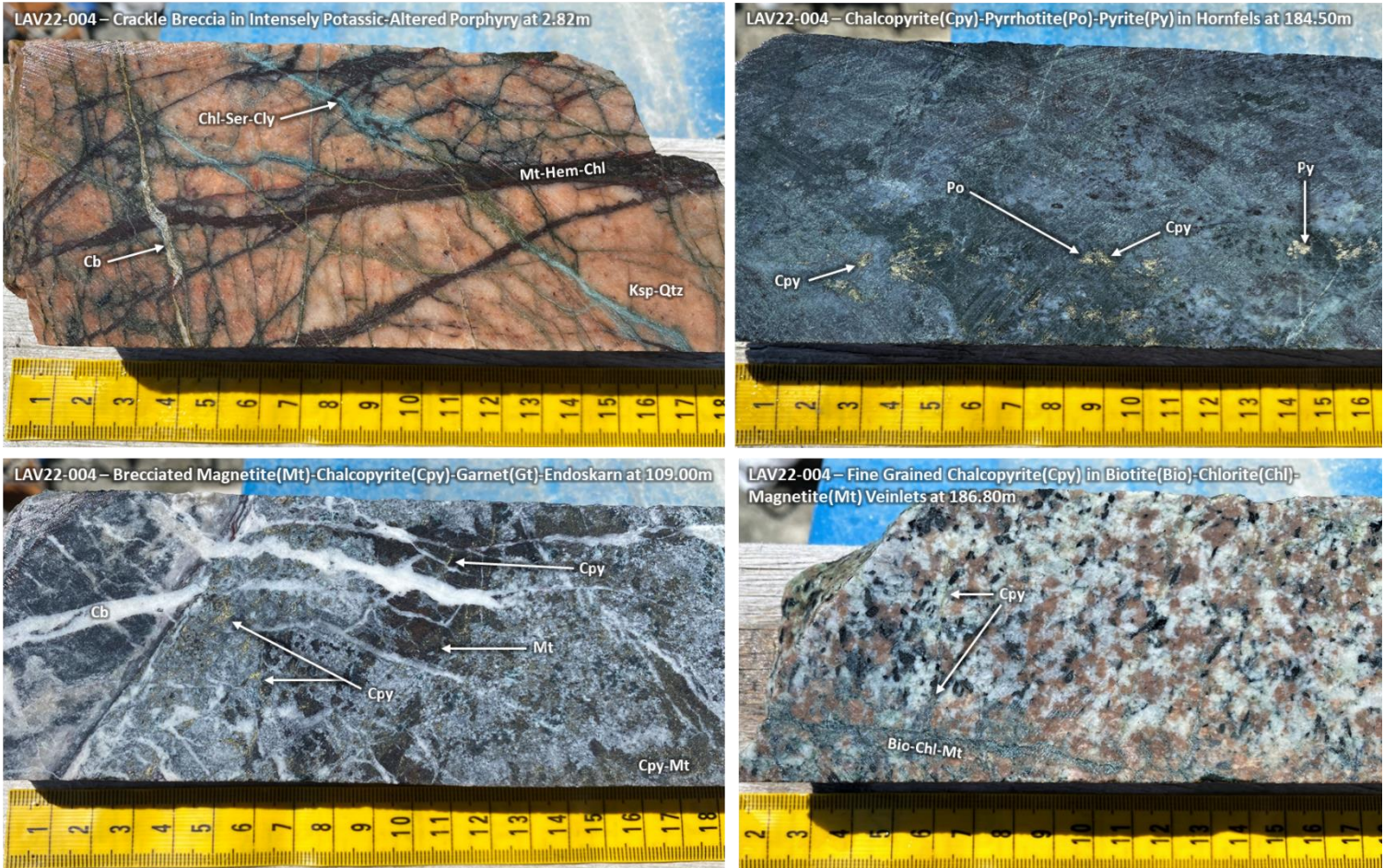


Figure 2: Photographs of HQ-sized core intervals in LAV22-004 showing the potassic alteration assemblage in granodiorite, porphyry style veinlets, as well as Cu-bearing skarn style mineralization.

- **LAV22-003** was drilled southwest for 300 metres and intersected:
 - Alternating intervals of marble-hosted magnetite (Fe)±chalcopyrite (Cu) skarn, garnet-chalcopyrite±molybdenite-bearing endoskarn, and strongly potassic altered granodiorite hosting chalcopyrite±bornite to 66 metres depth (Figure 3).
 - Banded, magnetic hornfels intruded by potassic-to-phyllitic altered granodiorite porphyry to 105 metres depth, hosting patchy, fine-grained chalcopyrite (Figure 3).

- A fault zone marked by intensely brecciated and altered intermediate intrusive near 122 metres depth. Alternating intervals of this unit and variably altered granodiorite with finely disseminated pyrite and localized crosscutting syenite dykes proceeded to end of hole.

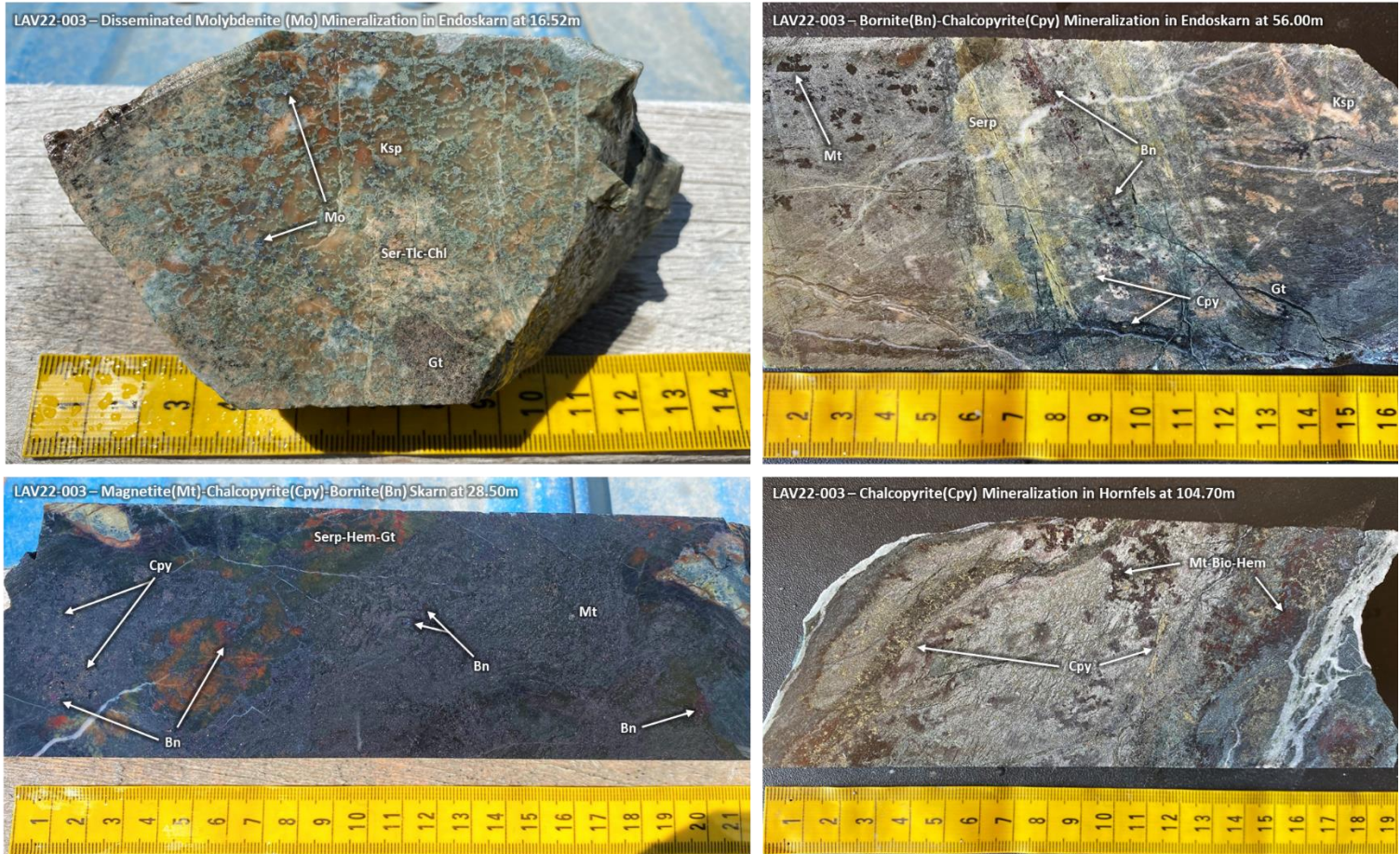


Figure 3: Photographs of HQ-sized core intervals in LAV22-003 showing upper Mo mineralization and bornite-chalcopyrite (Cu) bearing skarn style mineralization.

- **To date, 1,455 metres of HQ-size diamond drilling over five holes has been completed at the Laverdiere Project.** Diamond drilling will continue at Laverdiere at the North Adit with the objective of **extending mineralization to approximately 850 metres strike length** along the western flank of the Llewellyn Fault Zone.
- **All drill core assays are still pending and until assay results are completed and received, any inference of potential copper, gold, silver, and molybdenum grades from the geological descriptions provided in this release are speculative in nature and based on preliminary visual observations only.*

Core Assets' President & CEO Nick Rodway commented, "We are quickly beginning to recognize the potential of the Laverdiere Project. Copper mineralization transitions from at or near surface skarn-type to porphyry-style with increasing depth. The alteration assemblages and mineralization intensity are indicative of a large, fertile porphyry copper system. Since intercepting visually promising mineralization in all drillholes at Laverdiere to-date we have decided to drill beyond our planned 1500 metre campaign."

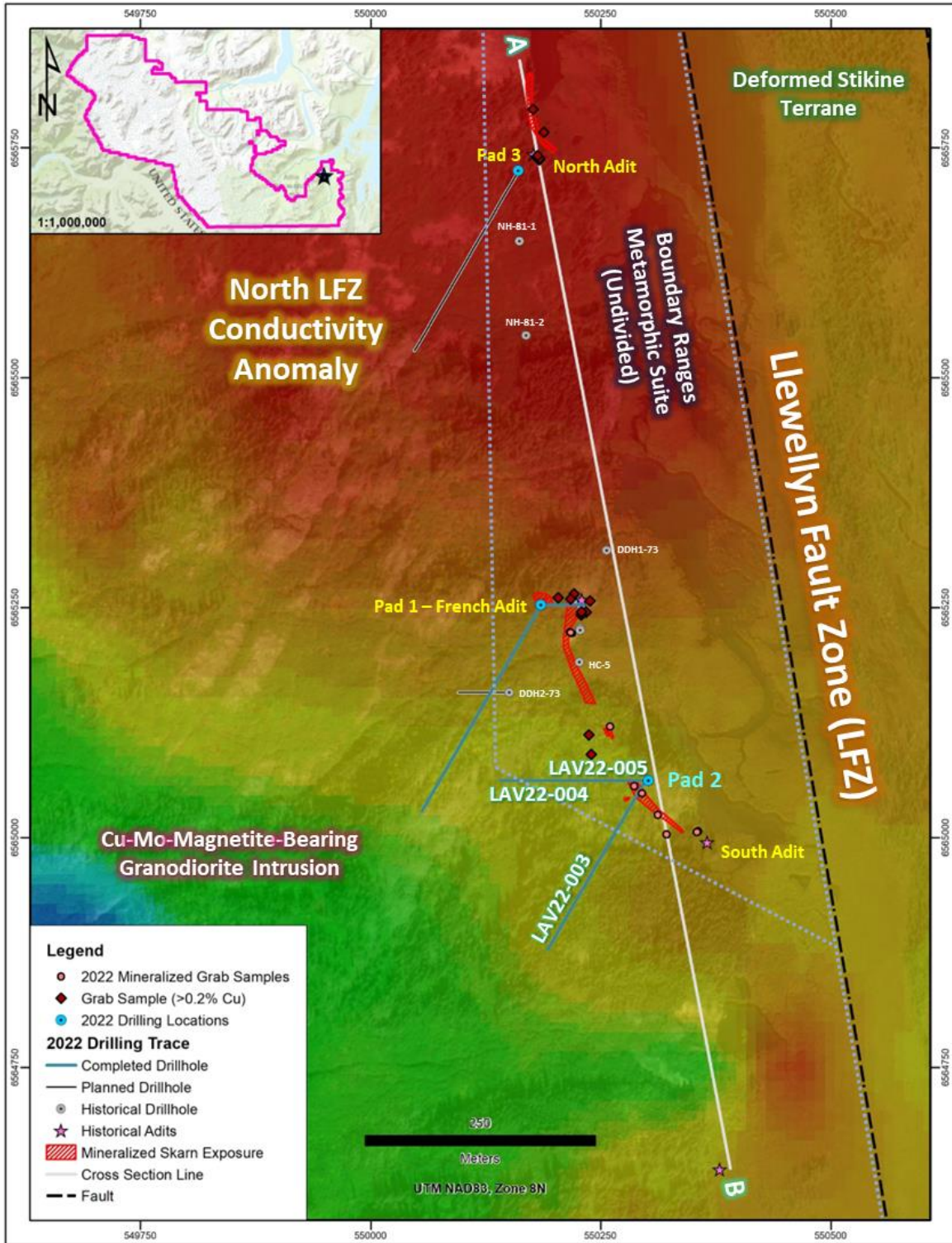


Figure 4: Historic and 2022 diamond drillhole status, surficial skarn extents, and Cu-bearing rock samples plotted on TauSf geophysics (Conductivity increasing – hot colours; Resistivity Increasing or Conductivity decreasing – cold colours). Line A-B illustrates the location of the east-northeast-looking cross-section/3D model in Figure 2.

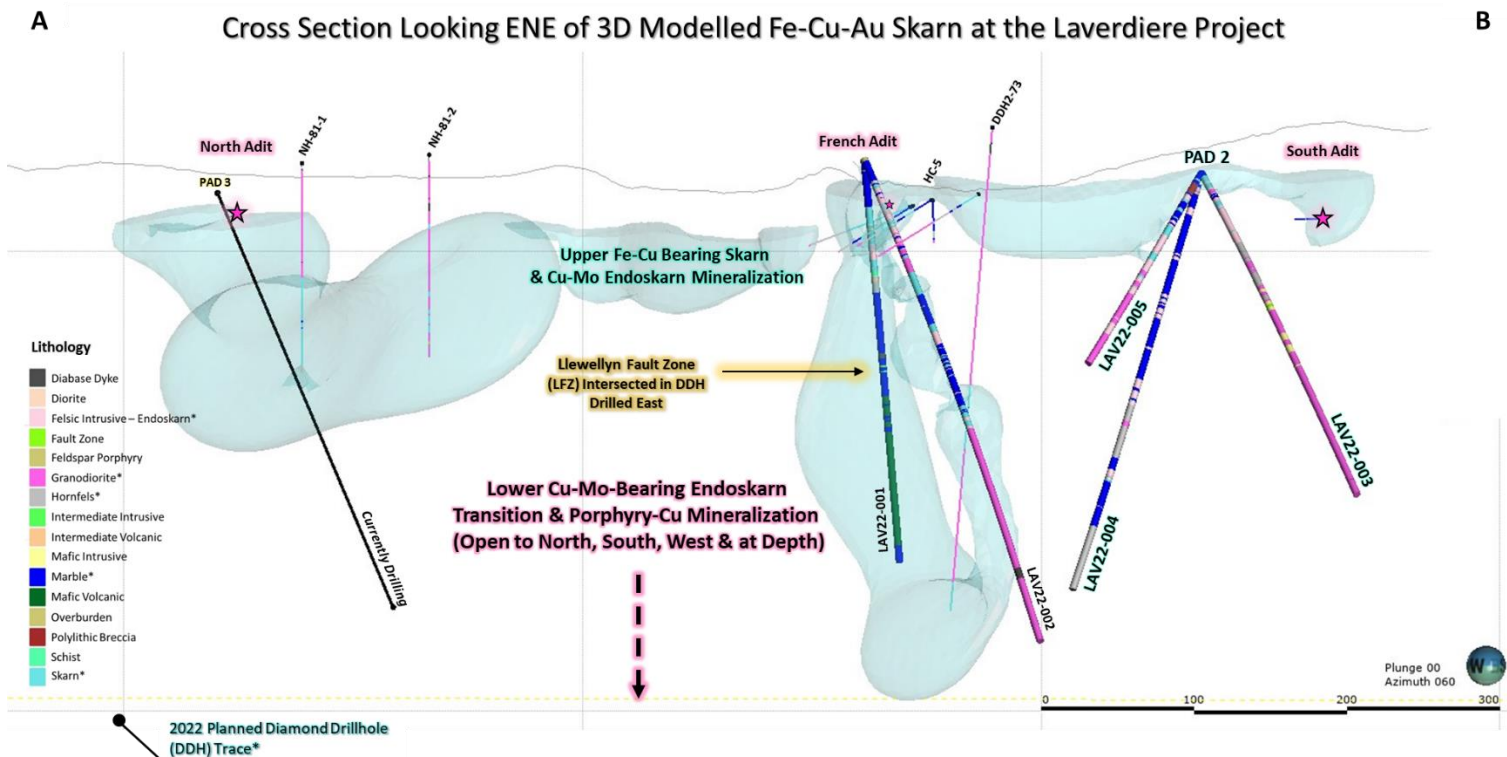


Figure 5: Illustrated and updated 3D Model of the high-grade Fe-Cu-Au skarn at the Laverdiere Project highlighting 2022 drilling progress and plans, skarn mineralization extents, logged downhole lithology from 2022 diamond drilling, and historic diamond drilling.

2022 Diamond Drilling at the Laverdiere Project

Up to 1,800 metres of exploratory HQ-sized diamond drilling is now planned for the Laverdiere Project in June. 2022 drilling efforts are designed to confirm and extend high-grade Fe-Cu-Au skarn and associated Cu-Mo porphyry style mineralization exposed at surface for 800 metres along the western flank of Hoboe Creek, and up to 400 metres depth, situated between the historic North and South Adits.

The Laverdiere Project is located proximal to the Llewellyn Fault Zone, coincident with Hoboe Creek in the eastern Blue Property. Laverdiere is characterized as a fine-to-coarse grained and locally massive Fe-Cu-Au-rich skarn (magnetite and/or magnetite-chalcopyrite-dominant±bornite-tetrahedrite-molybdenite-pyrite-pyrrhotite) hosted in dolomitic limestone and marble of the Devonian Boundary Ranges Metamorphic Suite. Along the western side of Hoboe Creek, dolomitic limestone is overlain by thin-bedded calcareous siltstone, quartzite, and schist – all of which are locally folded, dip moderately to the west, and are intruded by an Early Cretaceous post-accretionary granodiorite intrusion of batholith size (Coast Plutonic Complex). The granodiorite is locally foliated, Cu-Mo-bearing, and exhibits potassic alteration in the form of secondary K-feldspar and shreddy biotite after hornblende along the Fe-Cu-Au skarn contact.

The highest-grade skarn occurrences observed at Laverdiere are hosted in dolomitic limestone, near the siltstone contact and along the margins of the granodiorite intrusion. Disseminated and quartz-vein/fracture-hosted chalcopyrite, molybdenite, magnetite, and malachite have been observed in granodiorite outcropping along the Llewellyn Fault Zone (LFZ/Hoboe Creek) for up to 3.9km south from the main Fe-Cu-Au Skarn body (See News Release Dated April 6, 2022).



Core Assets Corp.
#1450 – 789 West Pender Street
(+1) 604-681-1568
CSE: CC

National Instrument 43-101 Disclosure

Nicholas Rodway, P.Geol. (Licence# 46541) (Permit to Practice# 100359) is President, CEO and Director of the Company, and qualified person as defined by National Instrument 43-101. Mr. Rodway supervised the preparation of the technical information in this news release.

About Core Assets Corp.

Core Assets Corp. is a Canadian mineral exploration company focused on the acquisition and development of mineral projects in British Columbia, Canada. The Company currently holds 100% ownership in the Blue Property, which covers a land area of 111,648.8 ha (~1,116 km²). The project lies within the Atlin Mining District, a well-known gold mining camp located in the unceded territory of the Taku River Tlingit First Nation and the Carcross/Tagish First Nation. The Blue Property hosts a major structural feature known as The Llewellyn Fault Zone (“LFZ”). This structure is approximately 140 km in length and runs from the Tally-Ho Shear Zone in the Yukon, south through the Blue Property to the Alaskan Panhandle Juneau Ice Sheet in the United States. Core Assets believes that the south Atlin Lake area and the LFZ has been neglected since the last major exploration campaigns in the 1980's. The LFZ plays an important role in mineralization of near surface metal occurrences across the Blue Property. The past 50 years have seen substantial advancements in the understanding of porphyry, skarn, and carbonate replacement type deposits both globally and in BC's Golden Triangle. The Company has leveraged this information at the Blue Property to tailor an already proven exploration model and believes this could facilitate a major discovery. Core Assets is excited to become one of Atlin Mining District's premier explorers where its team believes there are substantial opportunities for new discoveries and development in the area.

On Behalf of the Board of Directors
CORE ASSETS CORP.

“Nicholas Rodway”
President & CEO
Tel: 604.681.1568

Neither the Canadian Securities Exchange nor its Regulation Services Provider (as that term is defined in the policies of the CSE) accepts responsibility for the adequacy or accuracy of this release.

FORWARD LOOKING STATEMENTS

Statements in this document which are not purely historical are forward-looking statements, including any statements regarding beliefs, plans, expectations, or intentions regarding the future. Forward looking statements in this news release include expectations regarding the pending core assays, including speculative inferences about potential copper, gold, silver, and molybdenum grades based on preliminary visual observations from results of diamond drilling at Laverdiere; that preliminary results of drilling have exceeded the Company's expectations; the Company's plans to further investigate the geometry and extent of the porphyry-skarn continuum at Laverdiere through additional field work and diamond drilling; the proposed diamond drilling program planned for Laverdiere in June 2022; that drilling efforts will aim to confirm and extend certain targets and mineralization on the property; that the Company's exploration model could facilitate a major discovery at the Blue Property; that the Company anticipates it can become one of the Atlin Mining District's premier explorers and that there are substantial opportunities for new discoveries and development in this area. It is important to note that the Company's actual business outcomes and exploration results could differ materially from those in such forward-looking statements. Risks and uncertainties include that expectations regarding pending core assays based on preliminary visual observations from diamond drilling results at Laverdiere may be found to be inaccurate; that results may indicate Laverdiere does not warrant further exploration efforts; that the Company may be unable to implement its plans to further explore Laverdiere and, in particular, that the proposed diamond drilling program planned for Laverdiere may not proceed as anticipated or at all; that drilling efforts may not confirm and extend any targets or mineralization on the Laverdiere; that the Company's exploration model may fail to facilitate any commercial discovery of minerals at the Blue Property; that the Company may not become one of Atlin Mining District's premier explorers or that the area may be



Core Assets Corp.
#1450 – 789 West Pender Street
(+1) 604-681-1568
CSE: CC

found to lack opportunities for new discoveries and development, as anticipated; that further permits may not be granted in a timely manner, or at all; that the mineral claims may prove to be unworthy of further expenditure; there may not be an economic mineral resource; that certain exploration methods, including the Company's proposed exploration model for the Blue Property, may be ineffective or inadequate in the circumstances; that economic, competitive, governmental, geopolitical, environmental and technological factors may affect the Company's operations, markets, products and prices; our specific plans and timing drilling, field work and other plans may change; we may not have access to or be able to develop any minerals because of cost factors, type of terrain, or availability of equipment and technology; and we may also not raise sufficient funds to carry out or complete our plans. Additional risk factors are discussed in the section entitled "Risk Factors" in the Company's Management Discussion and Analysis for its recently completed fiscal period, which is available under the Company's SEDAR profile at www.sedar.com. Except as required by law, the Company will not update or revise these forward-looking statements after the date of this document or to revise them to reflect the occurrence of future unanticipated events.