



Ramping Up Revenues From Proven Gas Reserves in 2022

17 New Wells for Record-High Natural Gas Prices

JUNE 2, 2022

CSE: TCF | Frankfurt: Z62 | OTC: TRLEF



Trillion Energy Akçakoca Gas Production Platform, SASB Gas Field, Black Sea, Turkey

Disclaimers

A preliminary short form prospectus (the "Preliminary Prospectus") containing important information relating to the securities described in this document has been filed with the securities regulatory authorities in each of the provinces of Canada, excluding Québec. A copy of the Preliminary Prospectus, and any amendment, is required to be delivered with this document. The Preliminary Prospectus is still subject to completion. There will not be any sale or any acceptance of an offer to buy the securities until a receipt for the final short form prospectus has been issued. This document does not provide full disclosure of all material facts relating to the securities offered. Investors should read the Preliminary Prospectus, the final short form prospectus and any amendment for disclosure of those facts, especially risk factors relating to the securities offered, before making an investment decision.

General -Prospective investors in this offering ("Offering") should rely only on the information contained in the Preliminary Prospectus of Trillion Energy International Inc. (the "Company" or "Inner Spirit"). This Corporate Presentation is qualified in its entirety by reference to, and must be read in conjunction with, the information contained in the Preliminary Prospectus and the documents incorporated by reference into the Preliminary Prospectus. The information provided in this Presentation is provided as of June 2, 2022. A prospective investor should not rely on parts of the information contained in this Corporate Presentation to the exclusion of others. None of the Company nor Echelon Wealth Partners Inc. or Research Capital Corporation (together, the "Agents") have authorized anyone to provide prospective investors with additional or different information. The Company and the Agents are not offering to sell securities in any jurisdiction where the offer or sale of such securities is not permitted. Investing in the securities offered is speculative and involves significant risks that should be carefully considered by prospective investors. Prospective investors should carefully review and evaluate the risk factors contained in the Preliminary Prospectus and in the documents incorporated by reference therein before purchasing any securities. See headings titled "Forward -Looking Information" and "Risk Factors" in the Preliminary Prospectus. Prospective investors are advised to consult their own legal counsel and other professional advisors in order to assess the income tax, legal and other aspects of the Offering. There is no minimum amount of funds that must be raised under the Offering. This means that the Company could complete the Offering after raising only a small proportion of the Offering amount set out above.

This Corporate Presentation does not constitute an offer to sell or the solicitation of an offer to buy, nor shall there be any sale of the securities in any jurisdiction in which such offer, solicitation or sale would be unlawful prior to registration or qualification under the securities laws of such jurisdiction. The securities described in this document have not been and will not be registered under the United States Securities Act of 1933, as amended (the "U.S. Securities Act"), or any state securities laws and may not be offered or sold within the United States or to, or for the account or benefit of, persons in the United States or U.S. persons (as such term is defined in Regulation S under the U.S. Securities Act), unless an exemption from such registration is available.

Forward -Looking Information

Certain information set forth in this Presentation may constitute forward -looking information under applicable securities laws. Readers are cautioned that reliance on such information may not be appropriate for other purposes, such as making investment decisions. Forward -looking information typically contains statements with words such as "planned", "proposed", "anticipated", "upcoming", "expected", "may", "possible" or similar words suggesting future outcomes or statements regarding an outlook. Forward -looking information in this Presentation includes, but is not limited to, statements or information with respect to: the Company's proposed development opportunities, business plans and intentions; the Offering; timing of drilling and well completion activity, including the expectation for initial drilling to occur over 24 months with one well being brought online approximately every 45 days; the possibility of immediate production ramp up for gas to Turkiye /Europe; the anticipation that European plans of reducing dependence on Russian gas will create a shortage of gas supply; additional planned capital expenditures; the Company's planned well development program for SASB; the proposed funding for the Company's SASB drilling program; the expectation that wells will immediately start producing gas and cash flow from gas sales on a monthly basis; the expected near-term production and cash flow ramp up in 2022 and 2023; gas recoverable from wells; facilities costs and the timing and method of funding thereof; the future performance and characteristics of Trillion's oil and natural gas properties; projections of market prices and costs; the anticipated use of the Company's potential proceeds from the Offering; and other expectations, beliefs, plans, objectives, assumptions, intentions or statements about future events or performance. In addition, statements relating to "reserves" are deemed to be forward -looking information as they involve the implied assessment, based on certain estimates and assumptions, that the reserves described exist in the quantities predicted or estimated and can be profitably produced in the future.

Certain market, independent third party and industry data contained in this Corporate Presentation is based upon information from government or other independent industry publications and reports or based on estimates derived from such publications and reports. Government and industry publications and reports generally indicate that they have obtained their information from sources believed to be reliable, but none of the Company or any of its agents has conducted its own independent verification of such information. While the Company believes this data to be reliable, market and industry data is subject to variations and cannot be verified with complete certainty due to limits on the availability and reliability of raw data, the voluntary nature of the data gathering process and other limitations and uncertainties inherent in any statistical survey. None of the Company or any of its agents has independently verified any of the data from independent third party sources referred to in this Corporate Presentation or ascertained the underlying assumptions relied upon by such source.

Disclaimers

Since forward -looking information addresses future events and conditions, by its very nature it involves inherent known and unknown risks and uncertainties which are beyond the control of Trillion. Actual results could differ materially from those currently anticipated due to a number of factors and risks. These factors and risks include, without limitation : the risk that the Offering will not be completed as anticipated or at all; volatility in market prices for oil and natural gas; the potential for the return of conditions that persisted during the recent global crisis and economic downturn ; risks and liabilities inherent in oil and gas operations ; uncertainties associated with estimating oil and natural gas reserves ; geological, technical, drilling and processing problems ; fluctuations in foreign exchange or interest rates and stock market volatility ; changes in the laws or application thereof by the Government of Turkiye , including tax and environmental requirements ; capital expenditure programs and the timing and method of financing thereof ; the risk that the benefit derived from capital expenditure programs will not be as anticipated ; unexpected decline rates in wells ; wells not performing as expected ; delays resulting from or inability to obtain required third party and regulatory approvals ; ability the ability of Trillion to achieve drilling success consistent with management's expectations ; inability to access gas transportation and processing infrastructure ; operating costs ; future production levels of the Trillion's assets ; expected plans and costs of drilling ; drilling inventory and presence of gas pools ; projections of costs ; supply and demand for oil and natural gas ; expected levels of royalty rates, operating costs, general and administrative costs, cost of services and other costs and expenses ; the effects of weather, catastrophes and public health crises, including the COIVD-19 pandemic ; and such risks and uncertainties contained under the heading titled "Risk Factors" in the Preliminary Prospectus . Readers are cautioned that the foregoing list of possible risks and uncertainties is not exhaustive . Although Trillion has attempted to identify important factors and risks that could cause actual actions, events or results to differ materially from those described in the forward -looking information, there may be other factors and risks that cause actions, events or results not to be as anticipated, estimated or intended .

Trillion's actual results, performance or achievement could differ materially from those expressed in, or implied by, the forward -looking information and, accordingly, no assurance can be given that any of the events anticipated by the forward -looking information will transpire or occur, or if any of them do so, what benefits that Trillion will derive therefrom . The forward -looking information contained in this Corporate Presentation is made as at the date of this Corporate Presentation and Trillion does not undertake any obligation to update publicly or to revise any of the included forward -looking information, whether as a result of new information, future events or otherwise, except as may be required by applicable securities laws .

Future-Oriented Financial Information

To the extent any forward -looking statement in this presentation constitutes future -oriented financial information or financial outlook information (collectively, "FOFI") within the meaning of applicable securities laws, such information is used to provide information about management's current expectations and plans relating to the future development of Trillion's business . The reader is cautioned that this information may not be appropriate for any other purpose and the reader should not place undue reliance on such FOFI. FOFI, as with forward -looking information generally, is, without limitation, based on the assumptions and subject to the qualifications set out above under the heading "Forward -looking Information" . The Company disclaims any intention or obligation to update or revise any FOFI contained in this Corporate Presentation, whether as a result of new information, future events or otherwise, unless required pursuant to applicable securities law . Readers are cautioned that the FOFI contained in this Corporate Presentation should not be used for purposes other than for which it is disclosed herein .

Market and Industry Data

Certain market, independent third party and industry data contained in this Corporate Presentation is based upon information from government or other independent industry publications and reports or based on estimates derived from such publications and reports . Government and industry publications and reports generally indicate that they have obtained their information from sources believed to be reliable, but none of the Company or any of its agents has conducted its own independent verification of such information . While the Company believes this data to be reliable, market and industry data is subject to variations and cannot be verified with complete certainty due to limits on the availability and reliability of raw data, the voluntary nature of the data gathering process and other limitations and uncertainties inherent in any statistical survey . None of the Company or any of its agents has independently verified any of the data from independent third party sources referred to in this Corporate Presentation or ascertained the underlying assumptions relied upon by such source .

Currency

References to dollars or "\$" are to U.S. dollars unless specified otherwise .

Notes to Disclosure of Reserves and Resources

Statements made herein regarding Reserves, Prospective Resources, Resources, Net Present Value (NPV), Discovered petroleum initially -in-place, UPIIP, DPIIP for the SASB Project are generally derived from the two reports prepared by GLJ Ltd, an independent reserves estimator, each having an effective date of October 31, 2021 (collective the "GLJ Report") which estimated reserves and prospective resources on SASB. Prospective resources have both an associated chance of discovery and a chance of development to derive a final chance of commerciality. GLJ has assigned a 90% chance of development for all six prospects and a chance of discovery ranging from 50% to 90%, resulting in a range of chance of commerciality between 45% to 81%. Management has made internal estimates for approximately 13 additional exploration prospects on the SASB gas field involving resources not yet assessed by GLJ. These prospects are prospective resources, and have both an associated chance of discovery and a chance of development to derive a final chance of commerciality. GLJ has not yet assigned a chance of discovery or commerciality to same. The statements regarding these 13 additional prospects are based on managements estimation without independent review. Statements herein are made consistent with Canadian Oil and Gas Evaluation (COGE) Handbook. The resources definitions used in preparing this report are those contained in the COGE Handbook and the Canadian Securities Administrators National Instrument 51-101 (NI 51-101). WI means Working Interest in the SASB Project. Our working interest is 49% of the SASB Project. TPAO currently has the other 51% working interest. 100% WI or 100% Interest means the total working interest of all parties in the SASB Project. When we refer to 49% interest, that means our interest exclusive of TPAO who owns 51% interest in SASB. "Total Petroleum Initially In Place" means DPIIP + UPIIP. When calculating DPIIP, there is no material production or reserves associated with these properties. Contingent resources is the only category of DPIIP that has been categorized as recoverable. Prospective resources is the only category of UPIIP that has been categorized as recoverable. There is no certainty that it will be commercially viable to produce any portion of the contingent resources referred to in the tables above. There is no certainty that any portion of the prospective resources referred to in the tables above will be discovered. If discovered, there is no certainty that it will be commercially viable to produce any portion of these resources. (2) Certain volumes are arithmetic sums of multiple estimates of contingent & prospective resources, which statistical principles indicate may be misleading as to volumes that may actually be recovered. Readers should give attention to the estimates of individual classes of resources and appreciate the differing probabilities of recovery associated with each class as explained herein. Proven" reserves are those reserves that can be estimated with a high degree of certainty to be recoverable. There is a 90% probability that the actual remaining quantities recovered will equal or exceed the estimated proved reserves. "Probable" reserves are those additional reserves that are less certain to be recovered than proved reserves. It is equally likely that the actual remaining quantities recovered will be greater or less than the sum of the estimated proved plus probable reserves. "Possible" reserves are those additional reserves that are less certain to be recovered than probable reserves. There is a 10% probability that the quantities actually recovered will equal or exceed the sum of proved plus probable plus possible reserves. "Discovered petroleum initially -in-place" or "discovered resources" or "DPIIP" Definition : That quantity of petroleum that is estimated, as of a given date, to be contained in known accumulations prior to production. The recoverable portion of discovered petroleum initially -in -place includes production, reserves and contingent resources ; the remainder is unrecoverable. "Developed" reserves are those reserves that are expected to be recovered from existing wells and installed facilities or, if facilities have not been installed, that would involve a low expenditure to put the reserves on production. "Developed Producing" reserves are those reserves that are expected to be recovered from completion intervals open at the time of the estimate. These reserves may be currently producing or, if shut-in, they must have previously been on production, and the date of resumption of production must be known with reasonable certainty. "Developed Non-Producing" reserves are those reserves that either have not been on production, or have previously been on production, but are shut-in, and the date of resumption of production is unknown. "Undeveloped" reserves are those reserves expected to be recovered from known accumulations where a significant expenditure is required to render them capable of production. They must fully meet the requirements of the reserves classification (proved, probable) to which they are assigned. P = proven undeveloped, PP = Proven + Probable undeveloped, PPP = Prove + Probable + Possible undeveloped "Prospective resources" Definition : Those quantities of petroleum estimated, as of a given date, to be potentially recoverable from undiscovered accumulations by application of future development projects. Prospective resources have both an associated chance of discovery and a chance of development. Both risked and unrisked prospective resources are referred to in this document. "Total petroleum initially -in-place", "total resources" or "TPIIP" Definition : That quantity of petroleum that is estimated to exist originally in naturally occurring accumulations ; equal to DPIIP plus UPIIP. It includes that quantity of petroleum that is estimated, as of a given date, to be contained in known accumulations, prior to production, plus those estimated quantities in accumulations yet to be discovered."Undiscovered petroleum initially -in-place", "undiscovered resources" or "UPIIP" Definition : That quantity of petroleum that is estimated, on a given date, to be contained in accumulations yet to be discovered. The recoverable portion of undiscovered petroleum initially -in -place is referred to as prospective resources ; the remainder is unrecoverable. Any values assigned to UPIIP are subject and contingent upon discovering occurring. There is no certainty that UPIIP will be discovered, although management believes that further discoveries will be made. GLJ has assigned individual monetary values discounted for prospective resources in the GLJ Report, which have been discounted for risk of discovery. Although management believes that discovery will occur, it cannot guarantee a discovery of any individual particular prospective resource target and there is uncertainty associated with same. Amounts of discovered petroleum may vary significantly from those projected herein or may not be discovered at all.

Company Highlights

Turnkey Natural Gas Development in Hot European Market

▶ Key Asset

- 49% interest in large producing natural gas field offshore Turkiye, Black Sea.
- 8 Discovered fields (only 4 produced) with 17 production wells to be drilled between 20 22- 20 24
- Extensive production infrastructure in place allows for immediate production ramp up for gas to Turkiye/Europe at critical time.
- Blue-sky upside from analog to Tuna- 1, a 14 TCF discovery*

▶ Excellent Economics

Only a 12.5% Royalty and less than US\$1.00/mcf OPEX generates strong returns, especially at record high natural gas

▶ **\$18/MCF** USD @April '22
Record High Natural Gas Prices

▶ 17 Well Program

NPV10 US\$76.9 million for reserves and NPV10 US\$93.6 million for prospective resources @ \$9 gas (Source:GLJ); with one new well every 45 days



Phenomenal Blue Sky Potential

Trillion Energy's SASB block is 100 miles away from the 2021 Black Sea discovery of 19.1 TCF of gas in the Tuna - 1 and Amasra - 1 wells**.

*<https://www.upstreamonline.com/exploration/turkey-increases-tuna-1-gas-catch-to-14-3-trillion-cubic-feet/2-1-895387>

**<https://www.upstreamonline.com/exploration/turkey-makes-5-tcf-gas-discovery-in-black-sea-close-to-huge-sakarya-field/2-1-1020996>

All amounts, figures, prices in \$US, unless specified

Why Turkiye – High Gas Prices

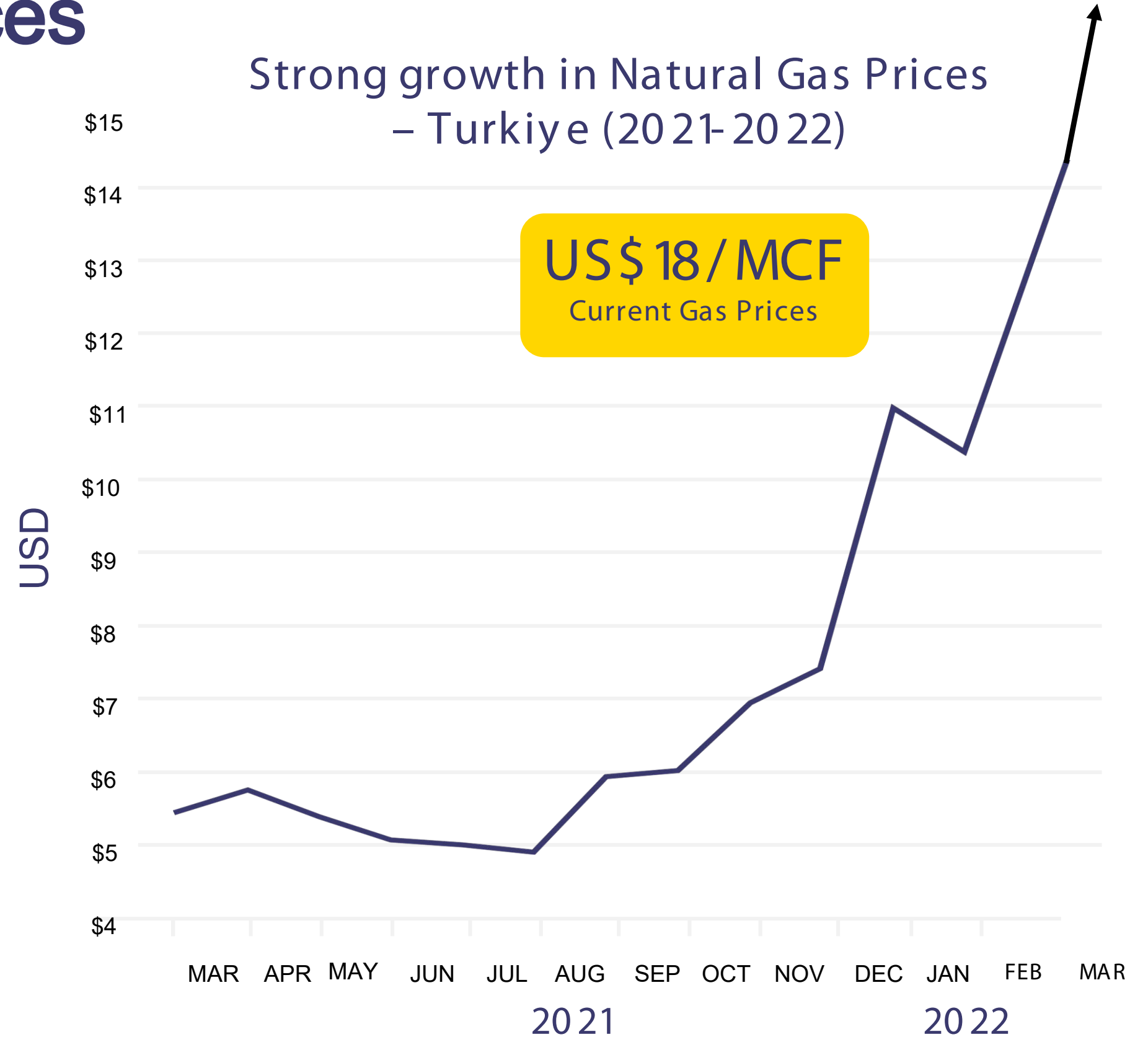
Acute Shortages & Soaring Natural Gas prices

- ▶ Turkiye and Europe imports 90% of its natural gas with a large % from Russia. EU Plans of reducing dependance on Russian gas is exuberating a shortage of supply.
- ▶ Current natural gas price is US\$18/mcf (May/June 2022), but has averaged >US\$7/mcf for the last 10 years.
- ▶ Attractive fiscal regime with 12.5% royalties, low corp taxes 23%
- ▶ Stable G-20 Country and NATO Member



North American gas pricing (Henry Hub) vs. BOTAS (Turkey) @ May./June 2022 in USD

Strong growth in Natural Gas Prices – Turkiye (20 21-20 22)



Existing SASB Gas Field Infrastructure

Large under-utilized, gathering and processing infrastructure = Turnkey Production



- 4 Existing Natural Gas Production Platforms
- 4 Gas pools produced to date (2008 - current) 42 BCF sold for approx. US \$355m (100% interest)
- 5 Additional gas pool reserves discovered, but never produced (GLJ Report)
- 6 Additional, low risk prospective resource targets.
- 16_{km} Pipeline tied into Natural Gas production plant onshore capable of 75MMcf/day, expandable to 150MMcf/day

\$608M* CapEx Investment to Date

* Trillion's interest is 49% Interest in the SASB Gas Field. Of the \$608 million Capex expended to date, \$180m were contributed by Trillion's 100 % owned subsidiary, Park Place Energy Turkey Limited. Trillion is responsible for 49% of the future CAPEX for the 17 well Phase III & IV exploration and development program.



Pictures of infrastructure

SASB : To Develop Natural Gas Reserves & Resources

Historical Production \$355m (4 produced gas pools)

42 BCF of gas produced to date value \$355m US from 8 wells

3rd Party assessment by GLJ

(GLJ used USD \$8 - \$9.5 /mcf) –(current prices \$18+)

Discovered Non-produced Conventional Natural Gas Reserves¹

- ▶ 20.2 BCF of net 2P reserves
- ▶ ***NPV10 US \$76.9M (before tax) (Trillion %)***

Low-Risk Development Prospects²

- ▶ 23 BCF best estimate case
- ▶ ***NPV10 US \$93.6M (before tax) (Trillion %)***

Only reserves and development – no exploration



(1) As per GLJ Report Dec 31, 2021

(2) As per GLJ Report Oct 31, 2021

SASB Planned 17 Gas Well Development Program

2022 – 2024 Development Program - SASB Gas Field

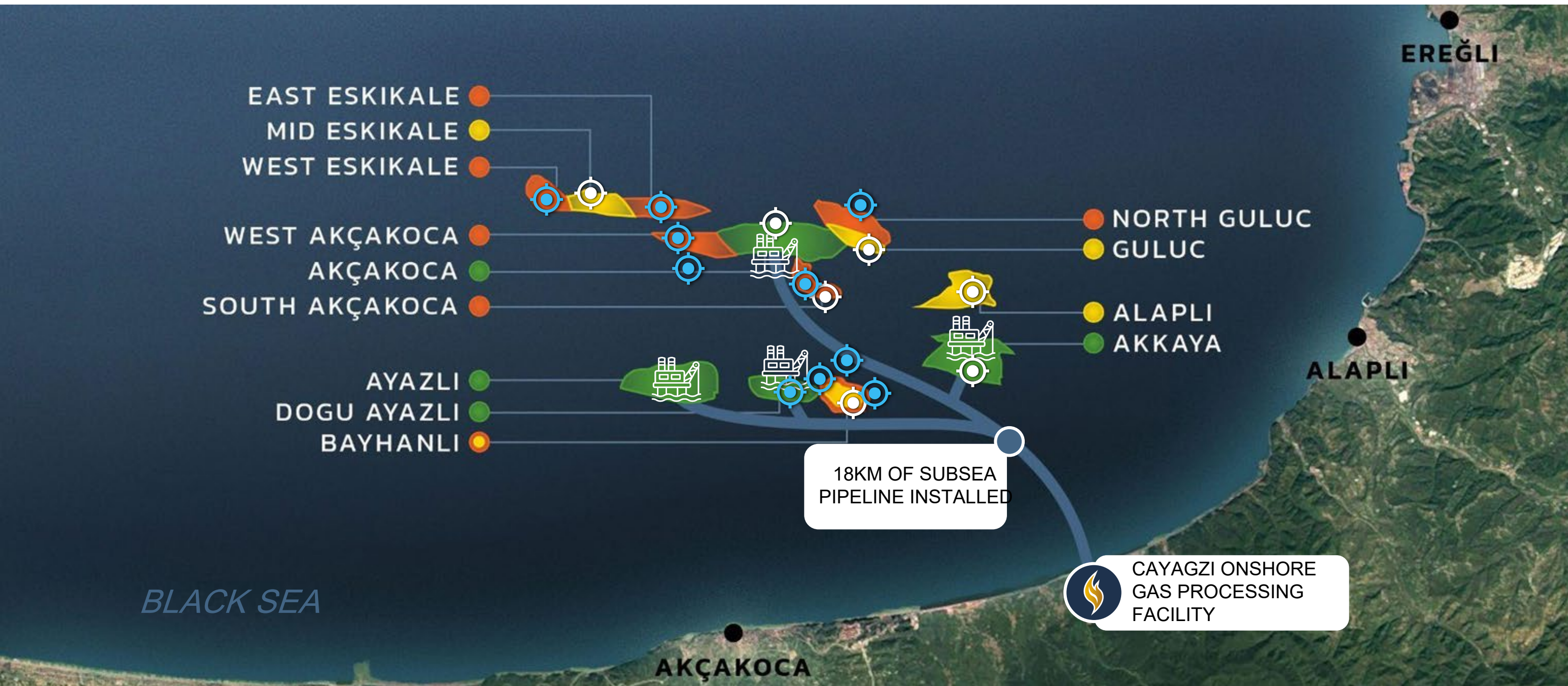
 7 Discoveries with unproduced Reserves

 10 New Development Drilling Locations





Tested and proved discoveries planned to be drilled, completed and put into production 2022

-2023

Wells will be drilled from 2023 -2024 (60 -80% probability of success):GLJ



LEGEND

-  PLATFORM
-  DEVELOPED & PRODUCING
-  DISCOVERED & UNDEVELOPED
-  PROSPECTIVE RESOURCES

Current development - 17 Wells, Two Programs

SASB Projected Cash Flow

Program (Gas Reserves) **A**

Drill 5 Wells to produce proved reserves
 Recomplete 2 Existing Wells
 Focus on reserves

Program (Development) **B**

Drill 8 Development Wells
 Re-Enter 2 Existing Wells
 Subsea Tie - In to Akçakoca

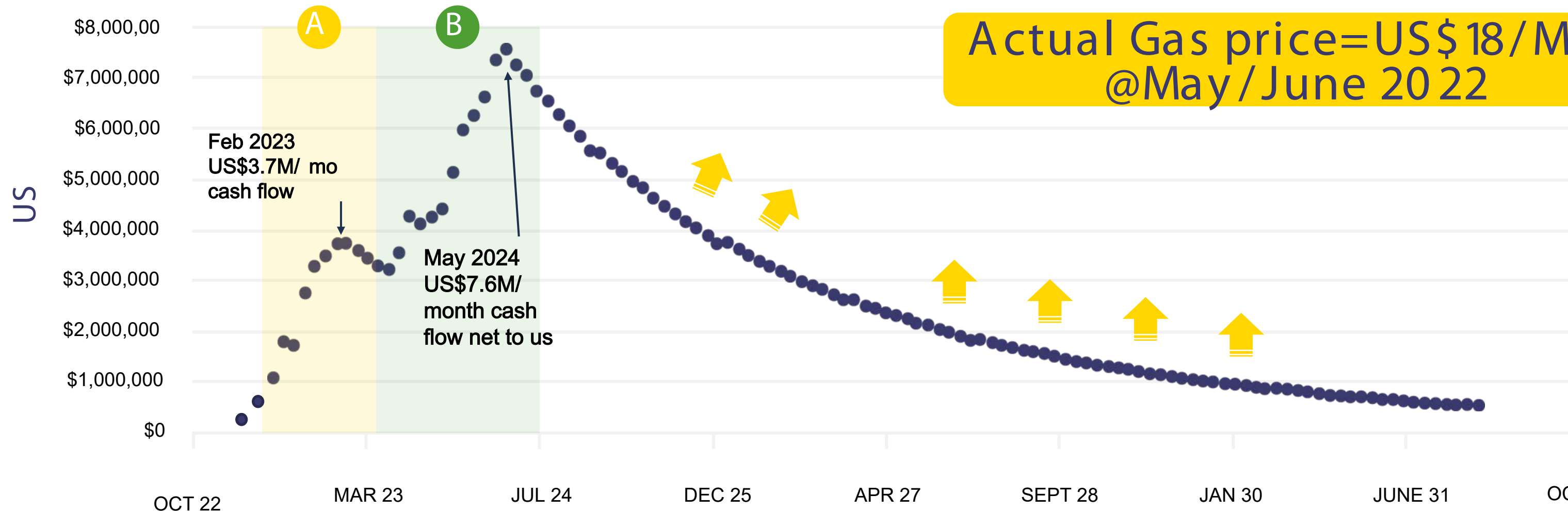
Projected Monthly Cash Flow (EBITA) Phase III & IV based on \$9/MCF Gas (actual prices are \$18/MCF)

Monthly SASB Projected Cashflow based on approx. \$9/mcf gas

\$3.7M
Feb 2023

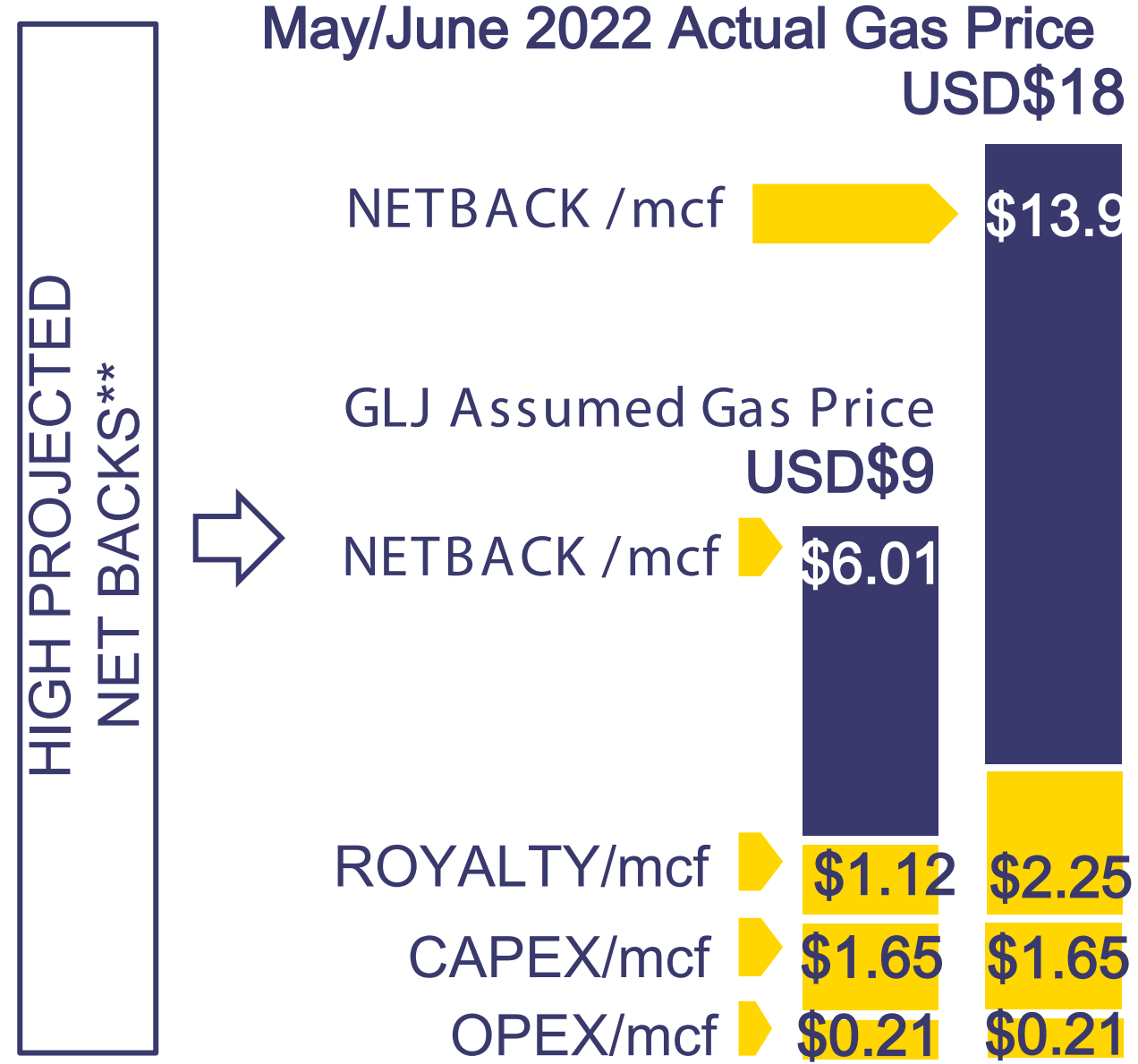
\$7.6M
April 2024

Projected monthly EBITA based on Oct 31 2021 GLJ forecasts in US assuming work program starts Aug 2022 for the planned 17 wells.



Actual Gas price = US\$18/MCF @ May/June 2022

SASB Gas Field Economics Summary



**Figures based on forecasted 44.7 BCF being produced.

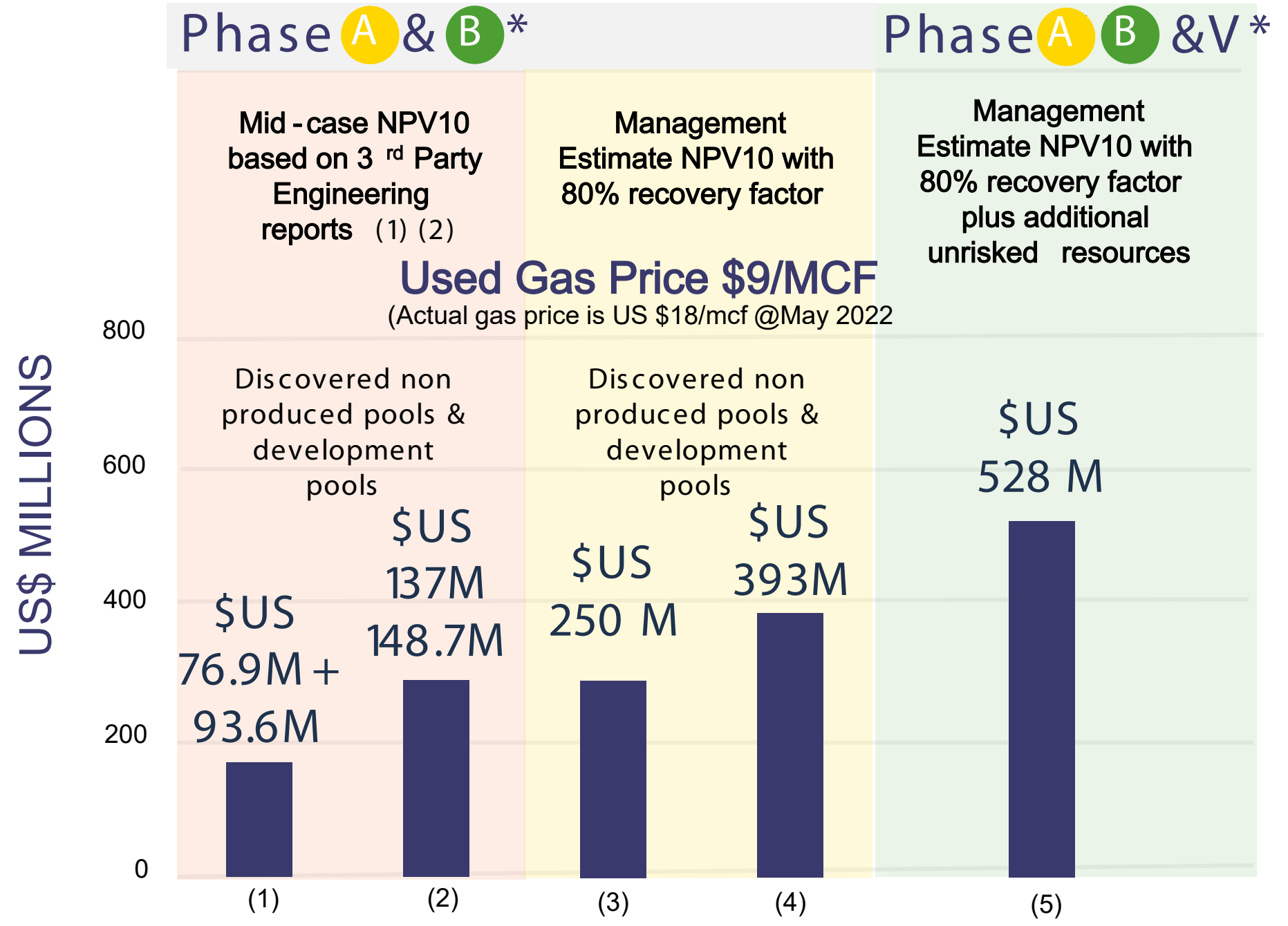
(1) 2P reserves plus best estimate prospective resources per GLJ Report October 31, 2021.

(2) 3P reserves plus high estimate resources per GLJ Report October 31, 2021.

(3) 2P Reserves plus best estimate prospective resources per GLJ Report all adjusted to 80% recovery factor (vs 60% recovery factor used in GLJ Report)

(4) 2P Reserves plus best estimate prospective resources per GLJ Report all adjusted to 80% recovery factor (vs 60% recovery factor used in GLJ Report) plus addback of 10% chance of commerciality deduction in GLJ Report

(5) GLJ Report 2P Reserves plus GLJ best estimate prospective resources all adjusted to 80% recovery factor vs 60% recovery factor used by GLJ in the GLJ Report and add back of 10% chance of commerciality deduction used by GLJ unrisks resources for an appl additional 13 exploration targets



*Net to Trillion Energy's 49% interest

factor used in GLJ Report) plus addback of 10% chance of commerciality deduction in GLJ Report

or used in GLJ Report) plus add back of 10% chance of commerciality deduction in GLJ Report

r used by GLJ in the GLJ Report and add back of 10% chance of commerciality deduction used by

SASB Development Funding Sources

Drilling funded through brokered equity, debt and internal cash flow

- ▶ Initial drilling over 24 months is expected to have one well drilled approximately every approximately 45 days.
- ▶ Wells are expected to produce gas and gas sales on a monthly basis upon completion & tie in.

Trillion's 49% CapEx:

Program **A**
7 Well Program

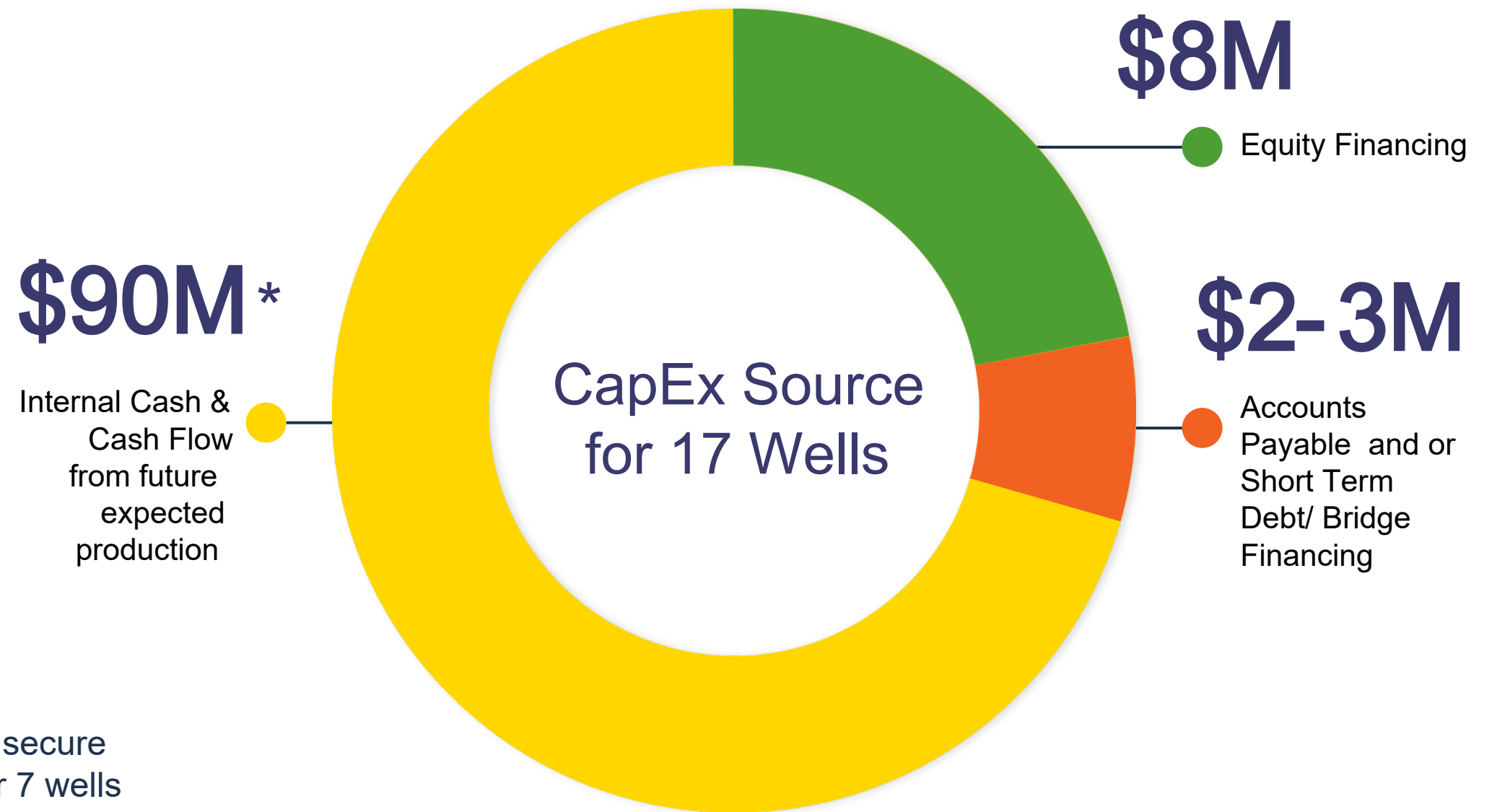
\$30m*

Program **B**
10 Well Program

\$70m+/-

*Based on internal estimates. To date, Trillion has paid: \$1.8 mil to secure rig, \$2.4 Million long lead items and cost of up-front engineering for 7 wells

CAPEX Sources (USD):



Corporate Summary

▶ Turnkey Nat gas Project for Europe

August 2022 Est. date of new production commencement

▶ US \$76.9M+ \$93.6M NPV 10 @\$9/mcf Gas*

*Per GLJ reports' NPV 10 for 2P reserves and best case resources @ SASB for 17 wells

▶ Helping Reduce Dependency on Russian Natural Gas

▶ Low-Cost Nat Gas Producer

Less than \$1/MCF* +12.5% royalty +CAPEX

▶ USD\$18/MCF- Current Gas Price

@ May/June 2022

▶ Near-term Production & Cash Flow Ramp Up 2022-2023

Company Capitalization Table

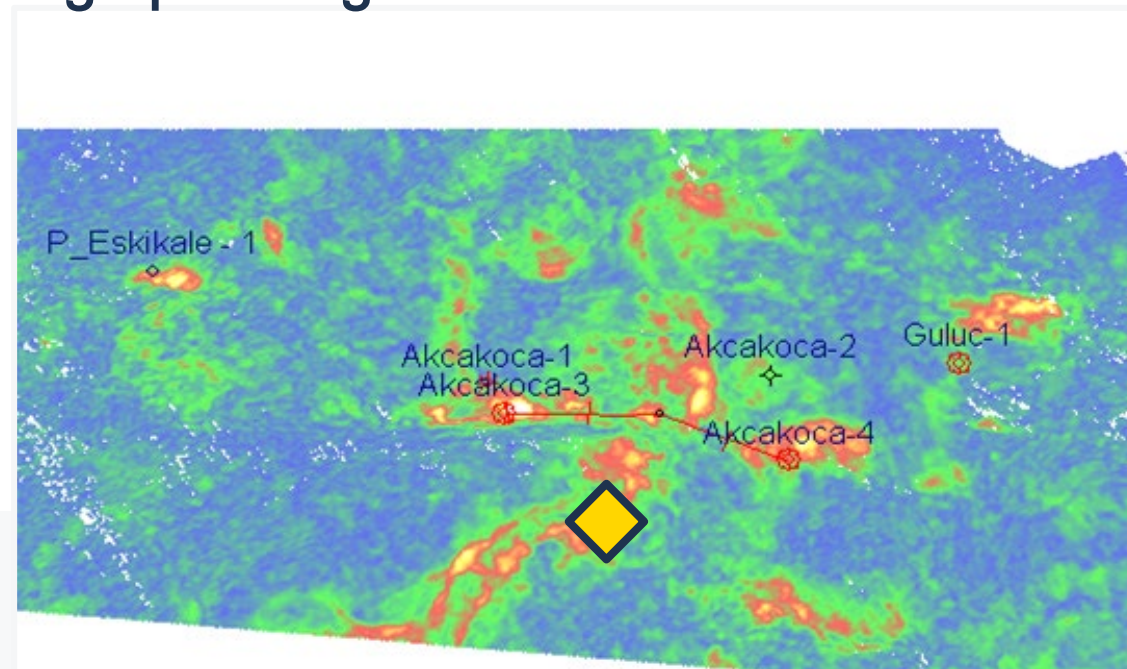
Share Price	CAN\$0.38
Basic Shares Issued & Outstanding	296m
Fully Diluted (After Warrants & Options)	374m
Market Capitalization (Basic)	CAN \$112m



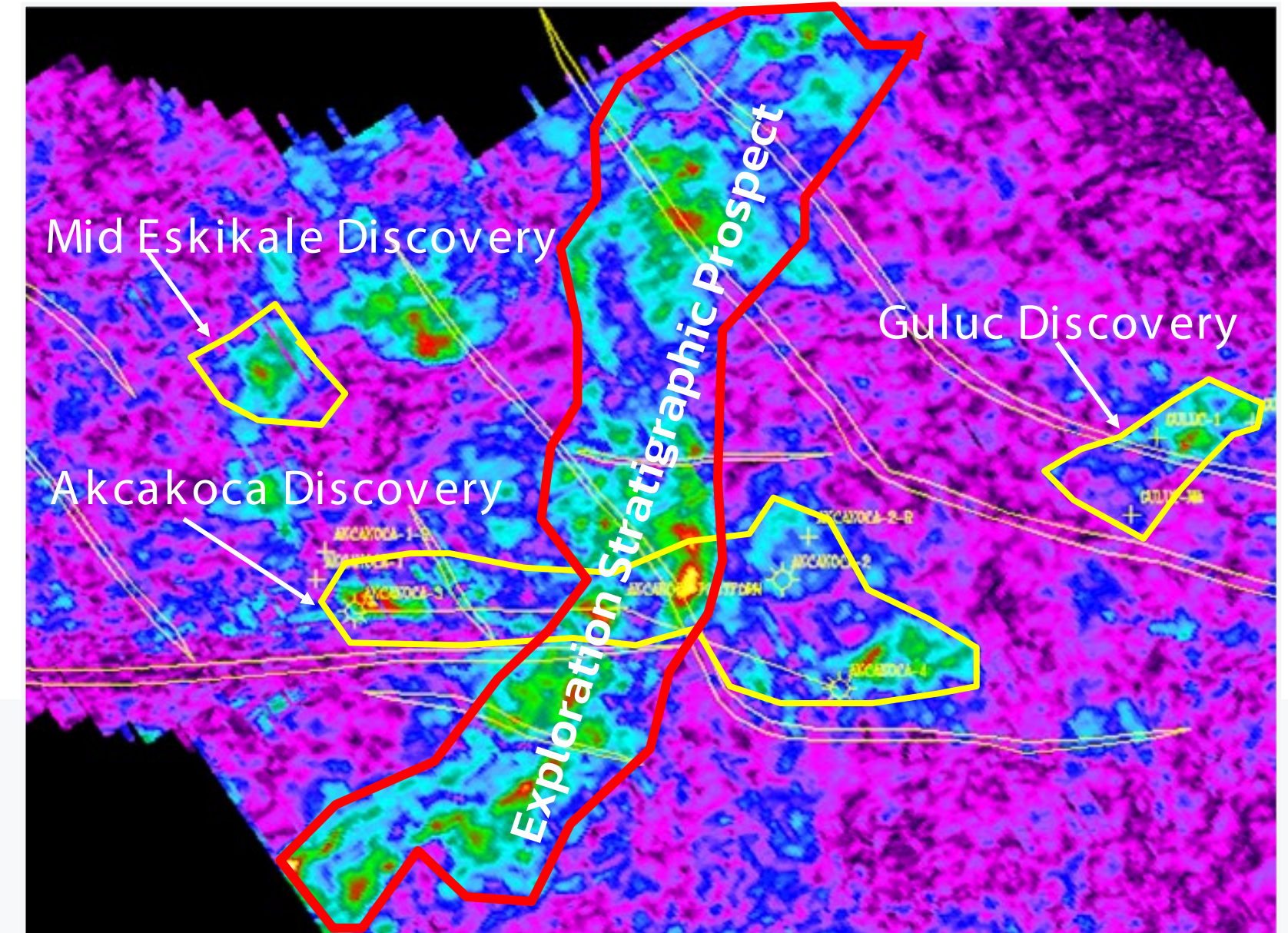
SASB Near Field Low Risk Exploration

13 Additional Exploration Targets

- ▶ 13 low - risk prospects not included in GLJ Report provide significant additional upside
- ▶ These targets are proximate to the platforms & Includes stratigraphic targets



Stratigraphic Exploration Targets



LEGEND



ANOMALIES IN LOWER SANDS



PRODUCING GAS POOLS

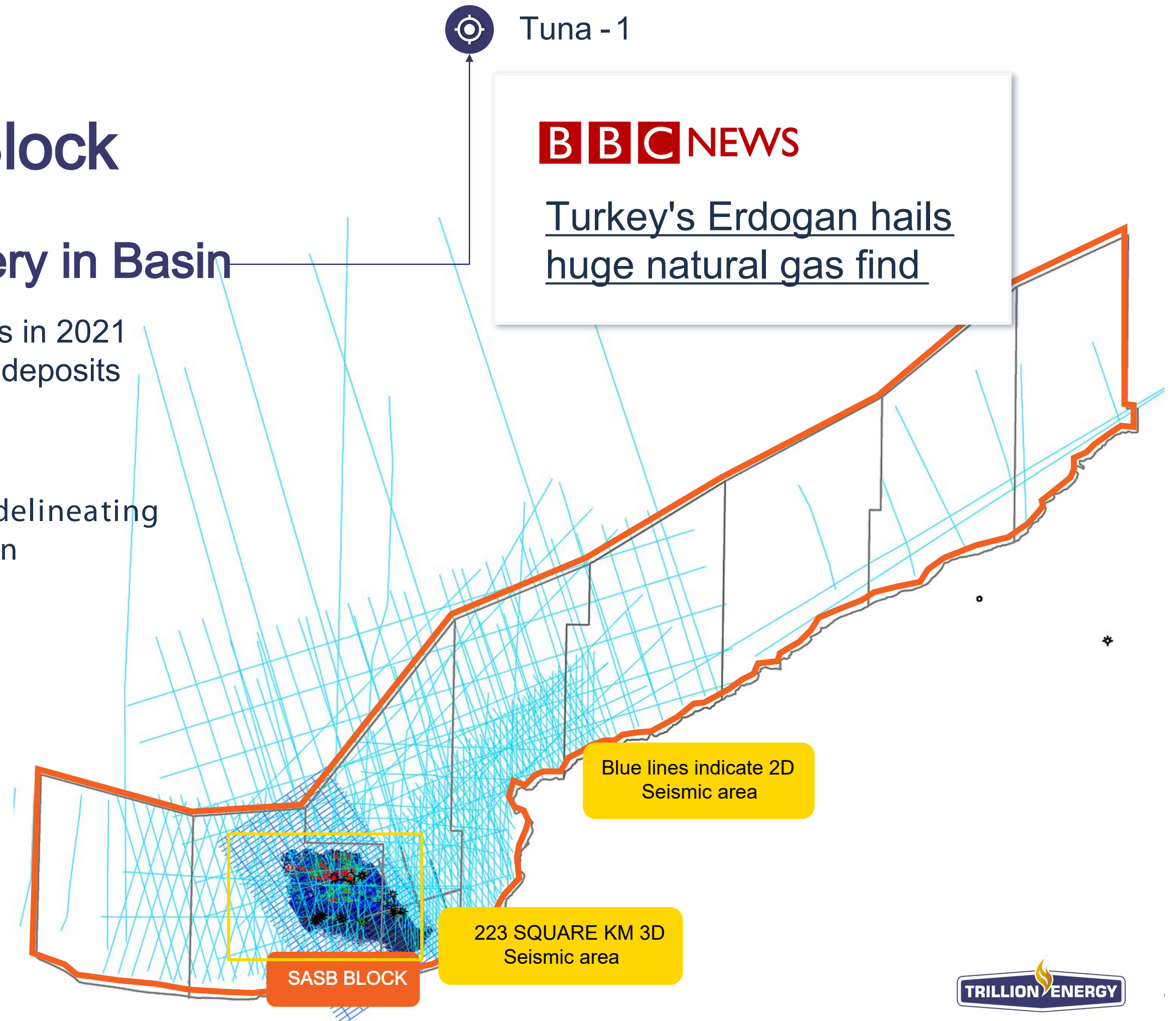
Blue Sky Exploration Proximate to SASB Block

Recent 19 TCF Gas Discovery in Basin

- ▶ Recent Tuna - 1 & Amasra 1 discoveries in 2021 are game changers showing huge gas deposits

Our Plan

- ▶ We have 3,100 km of 2D seismic data delineating targets off block for future exploration
- ▶ We plan to explore off block after production commences in 2022 seeking large natural gas structures



Directors & Management Team



Dr. Arthur Halleran ▶ PRESIDENT, CEO & DIRECTOR

Dr. Halleran has served as a director of Trillion Energy since October 4, 2011. He has a Ph.D. in Geology from the University of Calgary and 40 years of petroleum exploration and development experience. His international experience includes countries such as Canada, Colombia, Egypt, India, Guinea, Sierra Leone, Sudan, Suriname, Chile, Brazil, Bulgaria, Turkey, Pakistan, Peru, Tunisia, Trinidad Tobago, Argentina, Ecuador and Guyana. Dr. Halleran has worked for Petro-Canada, Chevron, Rally Energy, Canacol Energy and United Hydrocarbon International Corp. In 2007, Dr. Halleran founded Canacol Energy Ltd., a company with petroleum and natural gas exploration and development activities in Colombia, Brazil and Guyana (TSX:CNE, \$4.25; CND\$750M market valuation as at Oct 15, 2019) which made a billion-dollar natural gas discovery in Colombia.



Kubilay Yildirim ▶ GENERAL MANAGER (TURKEY), DIRECTOR

Mr. Yildirim has had, over the past 24 years, hands-on experience in drilling, production, seismic acquisition and logistics for both onshore and offshore projects in Turkey. He has spent most of career with Trillion Energy and its predecessor companies: Madison, Toreador and Tiway. He has also been involved in sales and divestitures of assets and has taken on a significant number of managerial positions until being promoted to General Manager in 2009. Mr. Yildirim has a degree in Petroleum and Natural Gas Engineering from Middle East Technical University and an MBA from Bilgi University in Istanbul.



Ozge Karalli ▶ FINANCE DIRECTOR (TURKEY)

Mrs. Karalli began her career in Deloitte as tax compliance auditor where she was also senior auditor and supervisor between 1998 and 2004. She joined Toreador in 2004 as Accounting Manager and Financial Controller, before becoming the Finance Director of Tiway Oil in 2010. Mrs. Karalli has a Bachelor of Economics degree from Bilkent University and has been a Chartered Public Accountant in Turkey since 2002.



David Thompson ▶ CFO & DIRECTOR

Mr. Thompson has 30 years of financial experience in the oil and gas industry. He successfully founded an oil trading company in Bermuda, with offices in the U.S. and Europe, and was responsible for the company's Turkmenistan production operations in the Lhamov and Zhdanoy oil fields (offshore Caspian Sea — part of the Turkmenistan project), which discovered producing reserves of 365M barrels oil and 2 TCF gas and successfully raised over \$100M in equity. He is Managing Director of AMS Limited, a Bermuda based Management Company. He has served as Founder, President and CEO of Sea Dragon Energy Inc. (London exchange: SDX 21.00 GBP), Financial Director of Forum Energy Plc (AIM) and SVP at Larmag Group of Companies. Mr. Thompson is a Certified Management Accountant since 1998.



DR. BARRY WOOD ▶ DIRECTOR

Dr. Wood has over 45 years of experience in the upstream oil and gas industry, having spent the core of his career with Shell Canada and Marathon International Oil Company. With Marathon, he directed asset evaluations across Southeast Asia and the Afro/Arabian regions, and drilling campaigns in Egypt and Syria for over 16 years. In 1998 he founded PetroQuest International SA, a private exploration and advisory firm, which he led to new exploration fairways in Tanzania, Syria and Egypt through the application of his research in reservoir formation. Since 2008, his experience has also included senior advisory positions with companies such as Dana Gas, NPC (Egypt), Sea Dragon (Egypt) and Maurel et Prom (Tanzania), among others, in establishing new offices, reviewing and recommending new opportunities, preparing contracts and managing geological and geophysical programs. Dr. Wood holds a DPhil from Oxford University and is a member of the Geological Society of London, The Petroleum Exploration Society of Great Britain and the American Association of Petroleum Geologists.

Pro Forma Capitalization & Sources & Uses

All Figures In C\$

Sources & Uses	
Sources	
Equity Financing	\$12,000,000
Total	\$12,000,000
Uses	
Development of SASB Gas Fields	\$10,400,000
General Working Capital Purposes	\$280,000
Offering Costs	\$1,320,000
Total	\$12,000,000

Pro Forma Capitalization		
	<u>Current</u>	<u>Pro Forma</u>
Issue Price	\$0.31	\$0.31
Current Shares Outstanding	296,853,074	296,853,074
Equity Financing Shares	–	38,709,677
Shares Outstanding	296,853,074	335,562,751
Market Capitalization	\$92,024,453	\$104,024,453
Add: Debt ⁽¹⁾	\$446,596	\$446,596
Less: Cash ⁽¹⁾	(\$15,932,093)	(\$26,612,093)
Enterprise Value	\$76,538,956	\$77,858,956

Pro Forma Ownership (Basic)		
Current Shares Outstanding	100.0%	88.5%
Equity Financing	–	11.5%
Total	100.0%	100.0%

CAD/USD 1.206
(1) As at March 31, 2022.

Summary of Offering

Issuer	Trillion Energy International Inc. (the " Company ")
Issue	Treasury offering of units (each, a " Unit "), with each Unit comprised of one common share in the Company (each, a " Common Share "), and one-half common share purchase warrant (each whole warrant, a " Warrant ")
Issue Price	\$0.31 per Unit
Issue Size	Up to \$12,000,000 (the " Offering ")
Over-Allotment Option	The Company will grant the Agent an option to increase the size of the Offering by up to 15.0%, exercisable in whole or in part at any time for a period of 30 days after and including the Closing Date (the " Over-Allotment Option ")
Warrants	Each Warrant shall entitle the holder thereof to acquire one Common Share for an exercise price of \$0.50 and a for period 36 months following the Closing Date
Use of Proceeds	The Company will use the net proceeds of the Offering to fund the development of the SASB gas fields, and for working capital and general corporate purposes
Closing Date	On or about June 24, 2022

Contact

General Inquiries

info@trillionenergy.com

+1 (778) 819-1585

trillionenergy.com

Canada (Head Office)

Suite 700

838 West Hasting Street

Vancouver, BC V6C 0A6

Turkey (Operations)

Turan Gunes Bulvari, Park Oran Ofis Plaza,

180-y, Daire:54, Kat:16, 06450,

Oran, Cankaya, Ankara, Turkey

Arthur Halleran, CEO

arth@trillionenergy.com

+1 (250) 996-4211

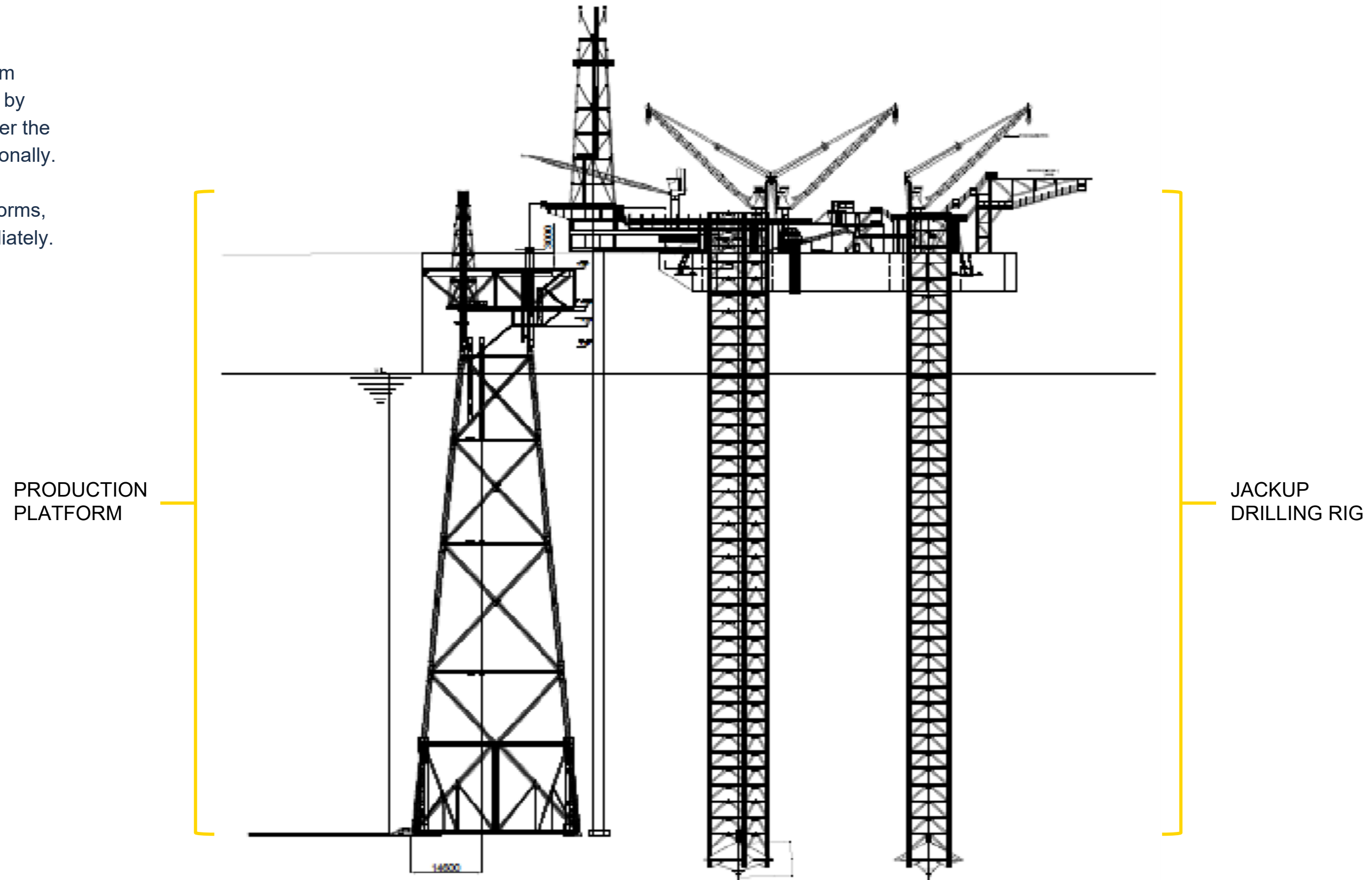


Drilling of Akçakoca well from an offshore rig, SASB Gas Field, Turkey



Appendix I

The wells will be drilled from existing offshore platforms by placing the jack-up rig over the platform and drilling directionally. This way, the wells will be connected to existing platforms, and start producing immediately.

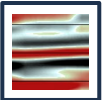




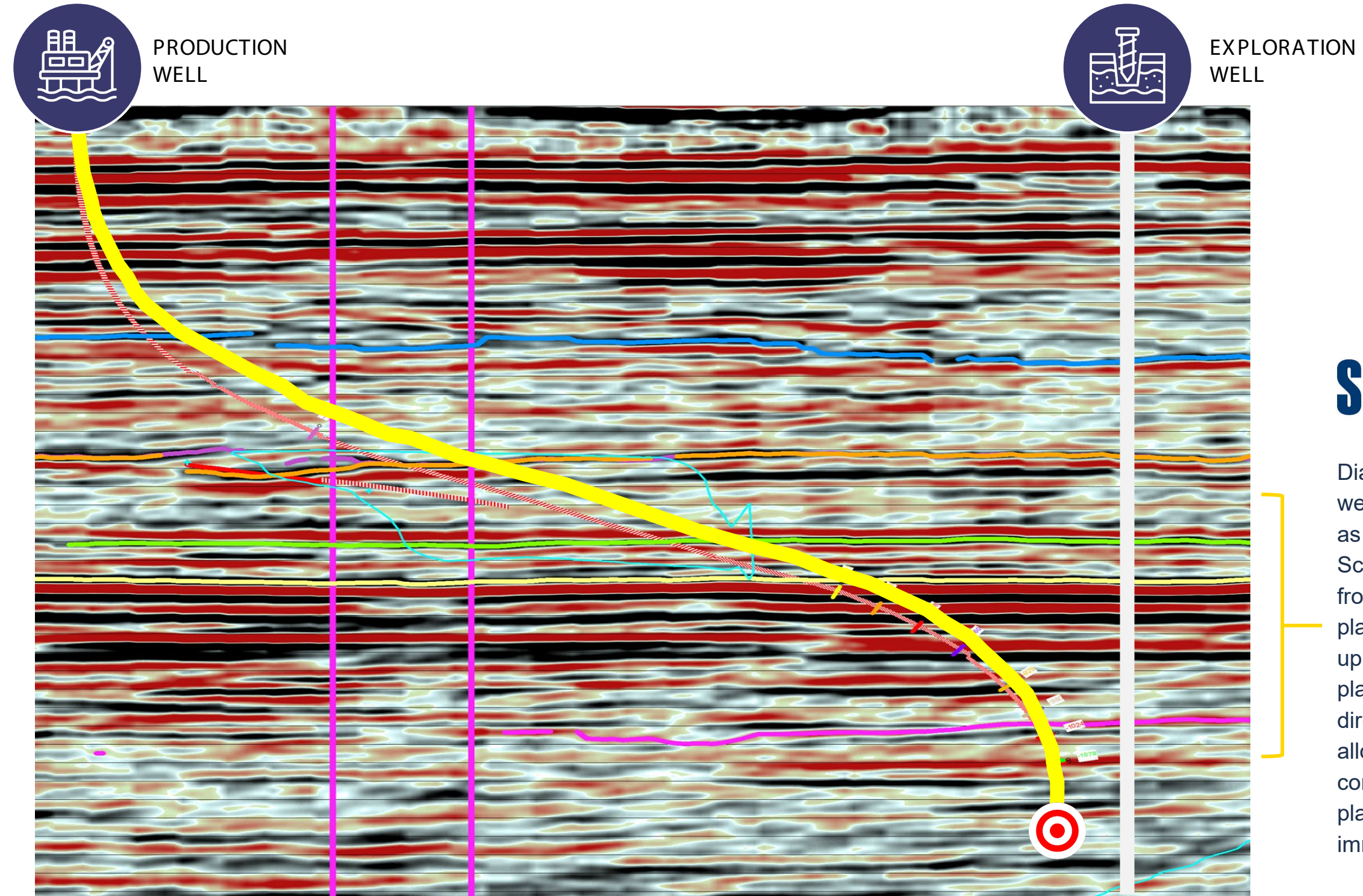
Appendix II

Bayhanli Well 2

Directional Drilling Method Utilized for Production Wells

LEGEND

-  SEISMIC LINES
-  DIRECTIONAL DRILL WELLBORE
-  TARGET



Schlumberger

Diagram illustrates how wells will be directionally drilled as engineered by Schlumberger and drilled from existing offshore platforms, by placing jack up rig over the existing platform, then drilling directionally to target. This allows wells to be connected to existing platforms and produce immediately.

Appendix III

Bayhanli

A detailed log illustrating gas sands and tested zones

Wells that have been previously drilled, tested and mapped, but not produced.

TESTED
7.2 MMcf/d

