

NEWS RELEASE

American Pacific Mining Presents the First Historical Compilation of Rock Geochemistry at the Madison Copper Gold Project

Vancouver, British Columbia / June 9, 2021 - American Pacific Mining Corp (CSE: USGD / FWB: 1QC / OTCQB: USGDF) (“American Pacific” or the “Company”) is pleased to announce the results of recently compiled rock sample geochemistry for gold and copper at the Company’s Madison Copper Gold Project (the “**Madison Project**”), located in Montana, USA. This comprehensive dataset has been compiled from all the available current and historical Kennecott Exploration and Broadway Gold data for the first time. All sample locations and data are located on land controlled by American Pacific.

The Company’s wholly-owned Madison Project is currently under an earn-in with an option to joint venture agreement, whereby Kennecott Exploration Company (“**Kennecott**”), part of the Rio Tinto Group (“**Rio Tinto**”), may spend \$30 million USD to earn up to 70% (see news release dated June 26, 2020).

Rock Geochemistry Compilation

American Pacific has compiled the historic surface rock samples and they are shown on the maps in Figures 1 and 2 below. This is the first time all of the historic data has been compiled and put into a visual format.

Eric Saderholm, President of American Pacific stated: “This newly compiled dataset shows the broad occurrences of mineralization found at the Madison Project. It is impressive and clearly shows high-grade gold and copper numbers distributed throughout the property. The higher-grade mineralization is hosted in a large array of different styles and textures including high-level quartz veins, iron-rich skarns, copper and gold bearing jasperoids and massive sulfides. The presence of these grades and values furthers the interest in the Madison Project and is a main driving component for accelerated exploration on rapidly evolving targets. Kennecott Exploration has mobilized equipment to Madison and are currently drilling. We anticipate a productive exploration year in 2021.”

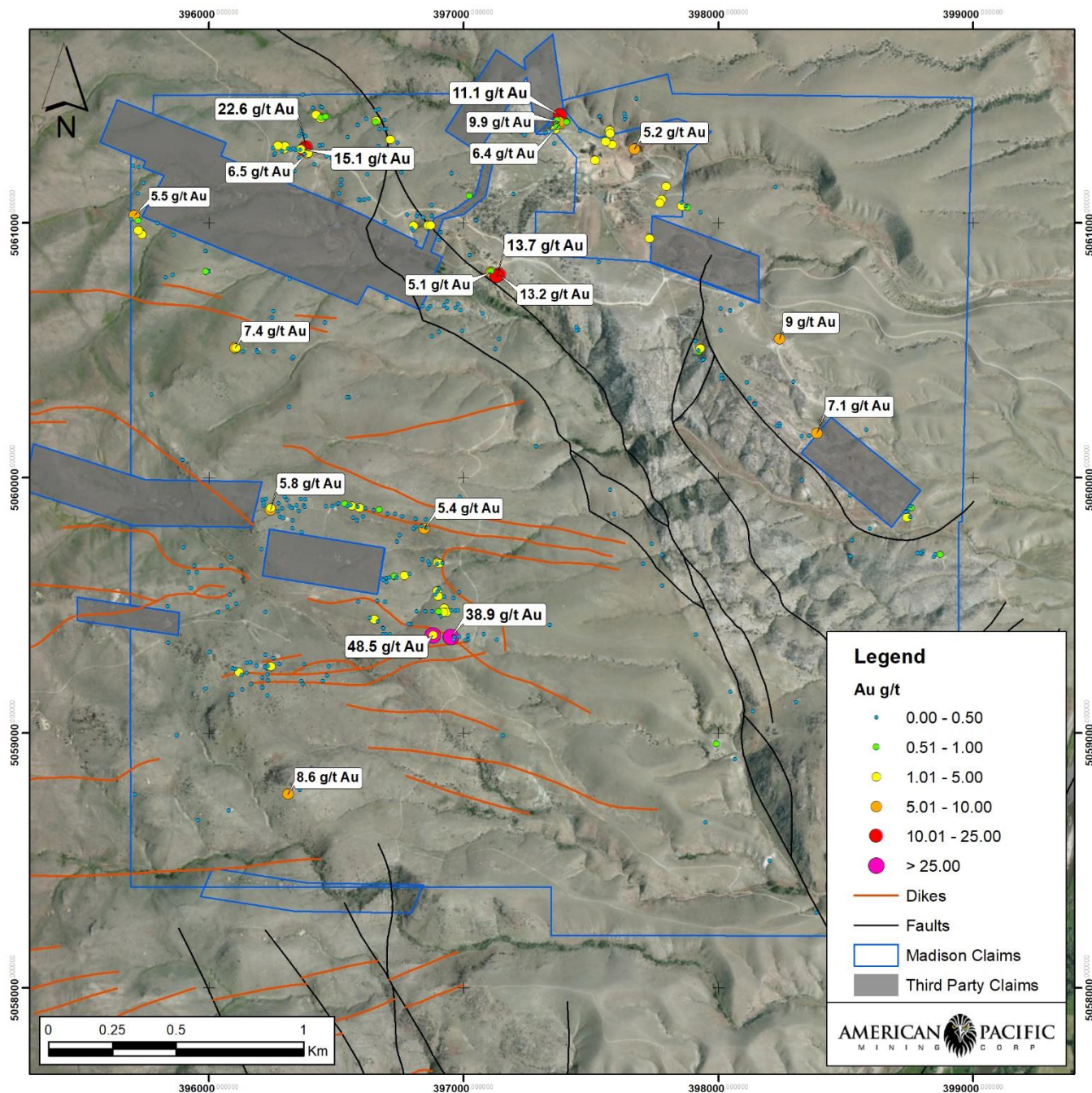


Figure 1: Gold values in surface rock sampling compilation. Rock samples showing gold distribution at Madison Project. Samples greater than 5 g/t Au are labelled.

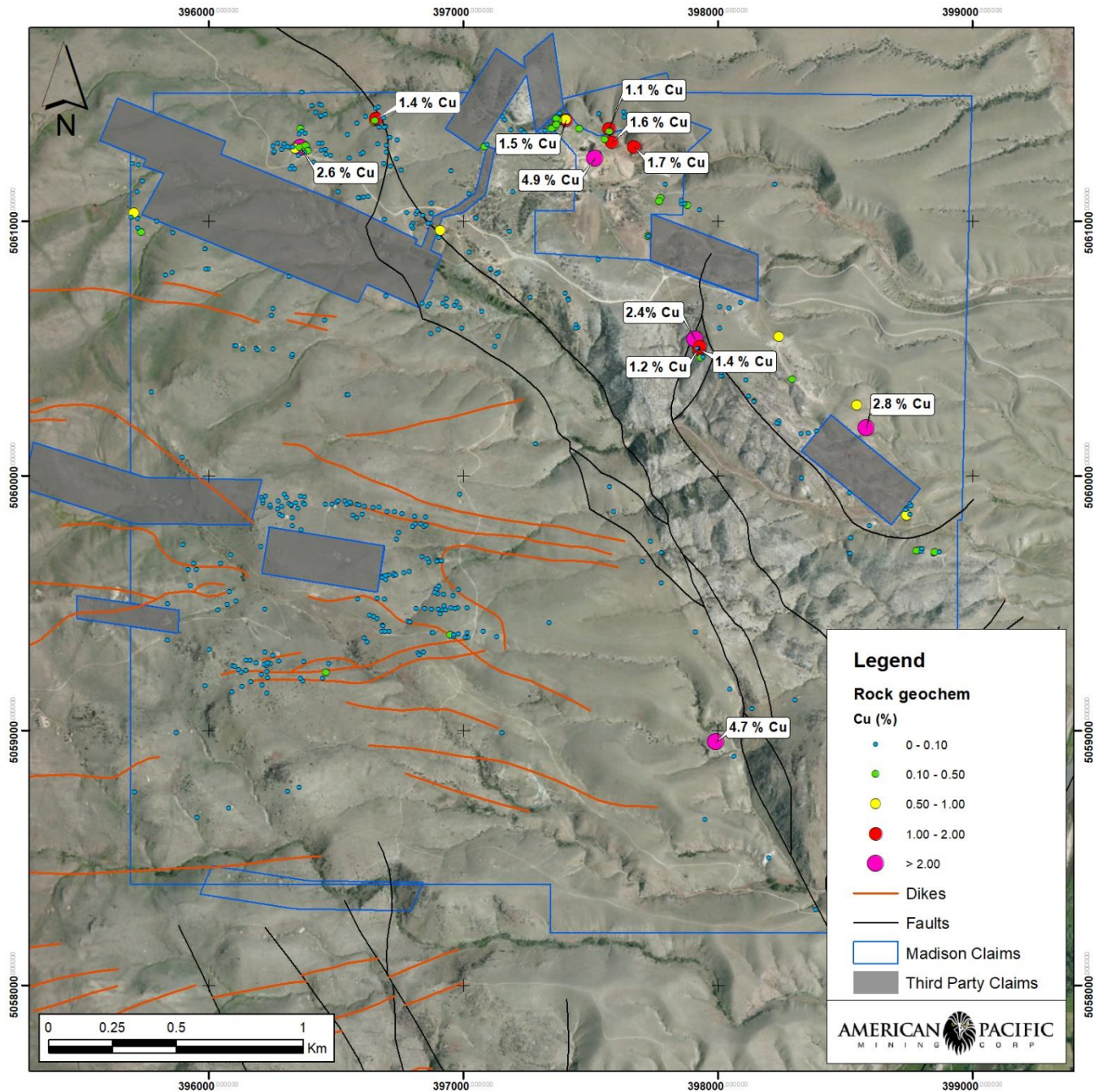


Figure 2: Copper values in surface rock sampling compilation. Rock samples showing copper distribution at Madison Project. Samples greater than 1% Cu are labelled.

Table 1.

Madison Project. Rio Tinto/Kennecott Exploration Rock Sample Gold and Copper Values.

SAMPLEID	WGS84_LL_X	WGS84_LL_Y	SAMPLETYPE	Au_ppm	Cu_ppm
40122150	-112.308883	45.692159	Rock	0.003	20.6
40122151	-112.313598	45.694446	Rock	0.07	2430
40122152	-112.313598	45.694446	Rock	0.044	82.8
40122153	-112.312992	45.69582	Rock	1.875	2720
40122154	-112.311947	45.695605	Rock	2.22	840
40122155	-112.321905	45.691691	Rock	0.008	74.9
40122156	-112.321078	45.690824	Rock	0.001	30.4
40122158	-112.321241	45.690455	Rock	0.005	60.2
40122159	-112.317063	45.691182	Rock	0.003	27.4
40122160	-112.317587	45.692205	Rock	0.08	14
40122161	-112.322624	45.693764	Rock	0.076	49.2
40122164	-112.322655	45.695846	Rock	0.612	111.5
40122165	-112.328144	45.697168	Rock	0.003	9.8
40122166	-112.326704	45.697782	Rock	0.022	124
40122167	-112.326915	45.698167	Rock	0.001	7.7
40122168	-112.327488	45.698381	Rock	0.92	8490
40122172	-112.323956	45.682887	Rock	1.83	114
40122173	-112.326148	45.682311	Rock	0.006	75.6
40122174	-112.322371	45.68018	Rock	0.004	90.5
40312292	-112.302951	45.68862	Rock	0.266	8090
40312293	-112.302461	45.687816	Rock	0.2	28000
40312294	-112.306199	45.689478	Rock	0.247	4970
40312295	-112.306929	45.690979	Rock	9	7470
40312296	-112.309442	45.691948	Rock	0.027	65
40312297	-112.309906	45.691246	Rock	0.073	144.5
40312298	-112.309927	45.692006	Rock	0.005	40
40312299	-112.309442	45.691948	Rock	0.005	26.4
40426543	-112.306852	45.687988	Rock	0.05	29.6
40426544	-112.304951	45.687664	Rock	7.09	362
40426545	-112.308543	45.689429	Rock	0.097	7.7
40426546	-112.308137	45.688683	Rock	0.03	373
40426547	-112.309741	45.689557	Rock	0.007	17.6
40426548	-112.310825	45.690174	Rock	0.498	2050
40426549	-112.310942	45.690478	Rock	0.819	13750
40426555	-112.32668	45.680551	Rock	0.013	11.3
40426556	-112.316363	45.697178	Rock	4.12	48500
40426557	-112.318161	45.698455	Rock	6.42	3170
40426564	-112.332434	45.684649	Rock	5.79	452
40426565	-112.331334	45.684725	Rock	0.007	18.5
40426566	-112.332494	45.679049	Rock	0.002	41.1
40426569	-112.339027	45.67452	Rock	0.005	14.8
40426571	-112.336977	45.676631	Rock	0.004	17.1
40426572	-112.334289	45.674001	Rock	0.019	91.9
40426573	-112.335846	45.673656	Rock	0.135	49.6
40426574	-112.303055	45.669285	Rock	0.151	28.8
40426575	-112.310251	45.673873	Rock	0.002	67.5

40426576	-112.303409	45.676773	Rock	0.011	9.4
40426577	-112.305816	45.678158	Rock	0.003	4.2
40426578	-112.307966	45.677828	Rock	0.003	13.8
40426579	-112.310883	45.680497	Rock	0.002	6.8
40426580	-112.315119	45.684699	Rock	0.003	31.9
40426581	-112.33594	45.693741	Rock	0.023	57.4
40426582	-112.33594	45.693741	Rock	0.003	116.5
40426583	-112.335746	45.693029	Rock	0.014	32.4
40426584	-112.303202	45.683358	Rock	0.033	98.3
40426704	-112.32456	45.69192	Rock	0.005	4.2
40426705	-112.321108	45.693082	Rock	13.15	349
40426706	-112.321519	45.693161	Rock	5.08	53.8
40426707	-112.322306	45.694987	Rock	0.016	139.5
40426709	-112.330876	45.697266	Rock	6.52	983
40426711	-112.332063	45.697384	Rock	1.085	28.3
40426712	-112.330229	45.698495	Rock	1.135	96.8
40426713	-112.330276	45.698905	Rock	0.16	303
40426714	-112.322901	45.685214	Rock	0.068	14.5
40426715	-112.323976	45.681867	Rock	1.93	505
40426716	-112.323582	45.681279	Rock	2.45	729
40426717	-112.32416	45.680305	Rock	48.5	161
40426718	-112.314387	45.697596	Rock	5.18	16750
40426719	-112.315512	45.697744	Rock	2.52	15700
40426720	-112.314873	45.698727	Rock	0.2	486
40426721	-112.3162	45.698733	Rock	0.139	515
40426723	-112.328357	45.684832	Rock	1.075	34.3
40426725	-112.329092	45.684871	Rock	0.018	55.6
40426729	-112.331317	45.674631	Rock	8.59	77.7
40426730	-112.330744	45.67477	Rock	0.431	33.7
40426732	-112.304584	45.670755	Rock	0.034	10.3
40426734	-112.307008	45.672558	Rock	0.004	5.5
40426735	-112.308842	45.67611	Rock	0.008	23
40426736	-112.309764	45.676634	Rock	0.952	47400
40426737	-112.309114	45.6785	Rock	0.01	61.4
40426738	-112.312634	45.682199	Rock	0.004	15.9
40426739	-112.313612	45.68296	Rock	0.015	159.5
40426740	-112.315322	45.685559	Rock	0.016	40
40426741	-112.334346	45.69034	Rock	7.43	63.8
40426742	-112.333266	45.69026	Rock	0.005	27.2
40426743	-112.331484	45.689994	Rock	0.011	32.2
40426744	-112.298956	45.683379	Rock	0.189	178.5
40426745	-112.300335	45.684973	Rock	0.031	22.4

Results of Broadway Gold Rock Sampling and QA/QC Procedures can be Found Using the Following Website Link:

<https://americanpacific.ca/projects/madison/madison-mine-rock-sample-database/>

Rio Tinto/Kennecott Exploration Quality Assurance, Quality Control

Sample security

The measures taken to ensure sample security Samples were submitted to the ALS Global lab by the company personnel following the guidelines and procedures of the Rio Tinto Exploration (Kennecott). Only authorised personnel have attended the samples.

Analysis Suite for QA/QC

ALS Global ran ALS_RIODISPXAU_SPEC; ALSRIODISPXAU+RIOSPEC Supertrace multielement (ME-MS61L); Au by fire assay (Au-ICP21); RTX pXRF Cr, Nb, Si, Ta, Ti, Y, Zr(p-XRF-30 RT/p-XRF-30NDL); an RIOSPEC VNIR/SWIR spectra (TRSPEC-20/INTERP-11).

Audits or reviews

The results of any audits or reviews of sampling techniques and data were reviewed by Kennecott Exploration personnel. Internal review of the drilling results by the company management is routinely used through the course of the project.

Standards

Two certified reference materials were use as standards for QA/QC and were provided by ALS Global and obtained from OREAS based in Australia. These standards were OREAS 504c and OREAS 524. These standards as well as blanks were inserted into the assay stream by Kennecott Exploration personnel with no input from American Pacific Mining.

Qualified Persons

Technical aspects of this press release have been reviewed and approved by Eric Saderholm, P.Ge. and Philip Mulholland P.Ge. the designated Qualified Persons (QP) under National Instrument 43-101.

About American Pacific Mining Corp.

American Pacific Mining Corp. is a precious metals explorer focused on opportunities in the Western United States. The Company's flagship asset is the high-grade, past-producing Madison Copper-Gold project in Montana, under option to joint venture with Kennecott Exploration Company, a division of the Rio Tinto Group, which the Company acquired in 2020. For this transaction, American Pacific has been selected as a finalist in the S&P Global Platts Global Metals Awards, an annual program that recognizes exemplary accomplishments in 16 performance categories, including 'Deal of the Year,' the category in which American Pacific Mining is competing. The awards program is hosted by S&P Global Platts, the leading independent provider of information and benchmark prices for the commodities and energy markets. Also in the American Pacific's asset portfolio are the Gooseberry Gold-Silver project and the Tuscarora Gold project: two high-grade, precious metals projects located in key mining districts of Nevada, USA. The Company's mission is to grow by the drill bit and by acquisition.

On Behalf of the Board of American Pacific Mining Corp.

“Warwick Smith”
CEO & Director

Corporate Office: Suite 910 – 510 Burrard Street Vancouver, BC, V6C 3A8 Canada

Contact Kristina Pillon, President, High Tide Consulting Corp., 604.908.1695 / Kristina@americanpacific.ca

The CSE has neither approved nor disapproved the contents of this news release. Neither the CSE nor its Regulation Services Provider (as that term is defined in the policies of the CSE) accepts responsibility for the adequacy or accuracy of this release.