

# BLACK TUSK RESOURCES INC.

500- 666 Burrard Street  
Vancouver, BC, V6C 3P6  
[www.blacktuskresources.com](http://www.blacktuskresources.com)

## BLACK TUSK RESOURCES INC. TO COMPLETE GEOPHYSICAL SURVEY MOGOLD PROJECT, VAL-D'OR, QUEBEC

March 7, 2022, Vancouver, BC – Black Tusk Resources Inc. (“Black Tusk” or the “Company”) (C: TUSK, Frankfurt: ONB, OTC: BTKRF) is pleased to announce that the company is planning to complete a deep-penetrating Pulse-EM (Time Domain Electromagnetic) survey on the MoGold property located north of Val d’Or, Quebec.

Black Tusk’s MoGold and PG Highway projects are comprised of adjoining claims covering 2,400 hectares. Black Tusk’s geologic team headed by Mathieu Piché, PhD, OGQ, conducted reconnaissance level geological surveys with associated rock sampling over the two properties (see news release dated January 11, 2022).

Sixty-nine samples were obtained from the MoGold Property. Some elements of interest returned elevated values, including a series of channel samples that returned elevated copper of 921 and 959 ppm in one area of sampling. Samples with elevated copper and/or gold were noted in some cases to contain elevated silver (to 0.65 ppm) and zinc (to 1135 ppm). The below table summarizes the more significant rock sampling results.

**Table 1 – Summary of rock grab and channel sampling (MoGold and PG Highway)**

Sample #	Quebec LithoCode	UTM E	UTM N	Sample Type	Auppm	Agppm	Cuppm
B0116796	V3B PY	298689	5353926	Channel	<0.001	<b>0.595</b>	<b>921</b>
B0116797	V3B Si+ PY	298688	5353926	Channel	<0.001	<b>0.559</b>	<b>959</b>
B0116803	V1B 30% PY SSM	304662	5352430	Channel	<b>0.035</b>	<b>0.647</b>	80.5
B0116806	v1b po qz 10% py	304631	5352423	Channel	<b>0.015</b>	<b>0.498</b>	44.1
B0116810	V1B GOSSAN	304629	5352420	Channel	<b>0.019</b>	0.45	89.5
B0116750	V3B / l2D	297805	5354263	Grab	0.007	<b>0.586</b>	472
B0116759	M8 PY	298682	5353865	Grab	<0.001	<b>0.52</b>	<b>788</b>
B0116765	V3B	298705	5353945	Grab	<0.001	0.271	278
B0116768	V3B	298804	5354006	Grab	<0.001	0.237	433

Dr Mathieu Piché notes that there are indicators suggestive of volcanogenic massive sulphide deposition based upon the geology and some of the geochemical characteristics. The Pulse-EM survey will be completed to explore potential sulphide mineralization at depth in the area where surface sampling returned elevated results. Targets generated from the ground geophysics and from rock sampling results will be tested by diamond drilling in 2022.

To date, exploration on the claims is guided in part by the results of an airborne magnetic survey completed earlier in 2021. Geophysique TMC completed a total of 153 line kilometres of survey the results

of which provided highly detailed magnetic images that indicate elongate features crossing the MoGold property, and adjoining Black Tusk - PG Highway property. Prospecting of these features will continue as part of the 2022 exploration.

Black Tusk exploration programs undertaken in Quebec are supervised by Dr. Mathieu Piché, OGQ with office located north of Val d'Or. He is also a Black Tusk company director.

Mathieu Piché, PhD, OGC, a qualified person under NI 43-101, has reviewed and approved the technical data in this press release.

### **Cautionary Statement**

*This press release contains forward-looking statements based on assumptions as of that date. These statements reflect management's current estimates, beliefs, intentions and expectations; they are not guarantees of future performance. The Company cautions that all forward-looking statements are inherently uncertain and that actual performance may be affected by a number of material factors, many of which are beyond the Company's control. Such factors include, among other things: risks and uncertainties relating to exploration and development; the ability of the Company to obtain additional financing; the Company's limited operating history; the need to comply with environmental and governmental regulations; fluctuations in the prices of commodities; operating hazards and risks; competition and other risks and uncertainties, including those described in the Company's Prospectus dated September 8, 2017 available on [www.sedar.com](http://www.sedar.com). Accordingly, actual and future events, conditions, and results may differ materially from the estimates, beliefs, intentions, and expectations expressed or implied in the forward-looking information. Except as required under applicable securities legislation, the Company undertakes no obligation to publicly update or revise forward-looking information.*

On behalf of the Board of Directors

Richard Penn  
CEO  
(778) 384-8923

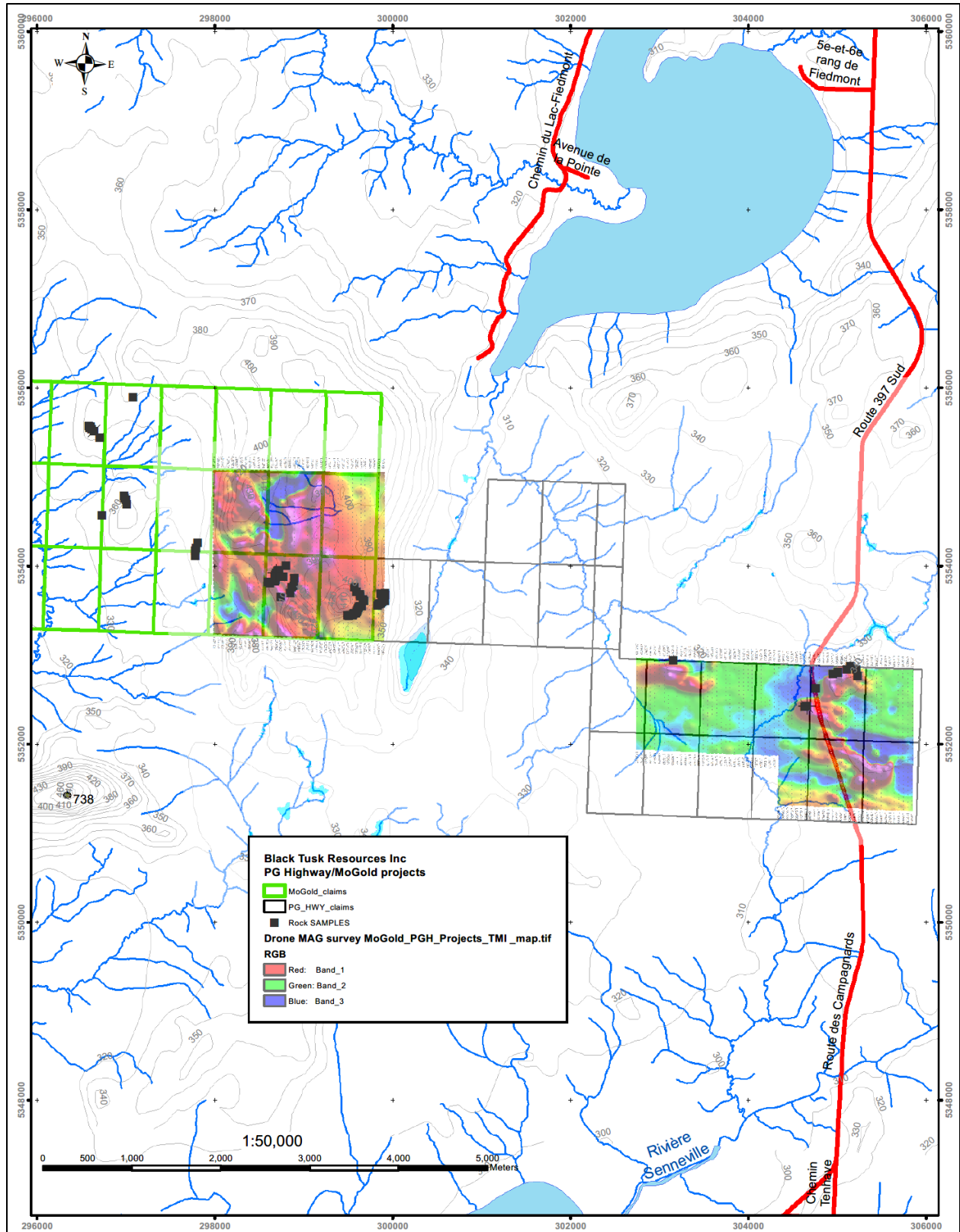


Figure 1 – MoGold and PG Highway claims: total field magnetic survey results and rock sample locations.