

GEOLOGICA ENGAGES STOCKHOUSE FOR AWARENESS CAMPAIGN

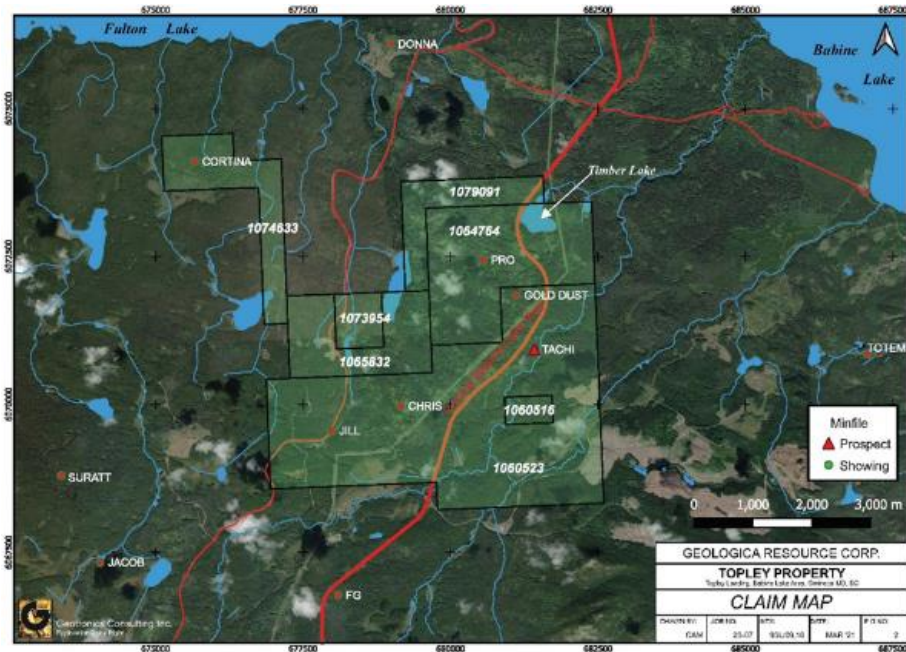
VANCOUVER, BC, October 28, 2022 – Geologica Resource Corp. (CSE:GRCM) (“**Geologica**” or the “**Company**”) is pleased to announce it has entered into a Client Services Agreement with Stockhouse Publishing Ltd. (“**Stockhouse**”), to assist with general market outreach and investor awareness as the Company continues to achieve important milestones.

Through our partnership with Stockhouse, Geologica has access to over 30 different marketing tools focused on editorial, brand awareness and amplifying news. Using these tools and the Stockhouse full-service program, a larger investor audience is exposed to Geologica.

"We are excited about this new partnership with Stockhouse and the opportunity it brings to the investment community," said Doug Unwin, Geologica’s Chief Executive Officer.

The agreement with Stockhouse is for a 12-month term with an option to renew. All content produced, will be published on the Stockhouse websites and further featured through the Stockhouse distribution platform, as well as provide content for the Geologica website.

Geologica’s Topley Property



The Topley property is located in central British Columbia near Babine Lake and is road accessible with power lines running through the property making the property very cost effective to explore. The region near Babine Lake is known for its large porphyry, copper/gold, and copper/molybdenum deposits including past producing copper mines, Granisle and Bell. Porphyries contain the largest reserves of Cu and close to 50% of Au reserves in BC. The Topley Property consists of 7 mineral claims totaling 2,669 Ha with known prospects and showings.

The fall 2020 soil geochemistry survey* consisting of 305 soil samples, identified a potential kilometre scale VMS target area located in the southwest section of the sample grid plus highlighted 6 additional

high priority target areas for further exploration. Occurring within the center of the potential VMS target area are two overlapping kilometer scale high priority target areas. This geochemistry is suggestive of a target area reflecting a VMS-type deposit that potentially contains significant mineralization*. This thesis is supported by the historical airborne magnetic survey, which shows the VMS target occurs within a magnetic high which is likely due to the Takla volcanics.

2018 MMI survey identified 2 copper anomalies correlated with gold anomalies.

Other VMS deposits occur within the area including Topley-Richfield-10 kilometres north of Topley, the Red prospect, 5 kilometres northeast of the dormant Granisle Mine, and the Fireweed silver-lead-zinc prospect, 12 kilometres west of the dormant Bell Copper mine. One of the best examples of a VMS deposit is the Eskay Creek Mine which is a world class gold-silver-copper-lead-zinc deposit occurring within Hazelton Group rocks which also occur on the Topley Property. Both the identified exploration targets in the south of the sample grid are open to the south. Additional mineral potential in the area has been ranked extremely high, as the Babine Lake area is the fourth most prospective in the entire Skeena- Nass mineral potential project area (MacIntyre et al. 1995). **A rock sample from the Topley Property yielded 6.84 grams/ton Gold (Carter, 1992).** The accuracy of the technical content of this overview has been reviewed by John Buckle P.Geo., who is a Qualified Person as defined under NI 43-101, and a member of the Company's board of directors.

About Stockhouse Publishing Ltd.

Stockhouse Publishing Ltd. (www.stockhouse.com) is a leading financial media company that serves public companies, financial institutions, media publishers, and brand advertisers. Stockhouse members have access to a wide range of world class products and tools including portfolio managers, subscription-based expert newsletters, Stockhouse Bullboards, blogs and social networking tools to help navigate their investment options. With over nine million unique visitors annually, Stockhouse is Canada's #1 financial portal and one of North America's largest small-cap investor communities.

About Geologica Resource Corp.

Geologica Resource Corp. is a mineral explorer, building shareholder value through the acquisition of projects with significant technical merit. The Company has an option agreement and a purchase agreement for 100% of the mineral claims known as the Topley Project, located in central British Columbia.

Further information on Geologica Resource Corp. can be found on the Company's website

<https://geologicaresource.com/> and on SEDAR at

<https://www.sedar.com/DisplayCompanyDocuments.do?lang=EN&issuerNo=00039876>

Doug Unwin

President & CEO

(604) 762-5355

doug.unwin@telus.net

Forward-Looking Statements

This news release contains forward-looking information which is not comprised of historical facts. Forward-looking information is characterized by words such as “plan”, “expect”, “ensuring”, “believe”, “anticipate”, “will”, “would” and other similar words, or statements that certain events or conditions “may” or “will” occur. In particular, this news release contains forward-looking information pertaining to the expected timing for the commencement of trading of the Shares on the CSE, the exercise of the Over-Allotment Option and the Company’s plans and objectives with respect to the Topley Project. Forward-looking information involves risks, uncertainties and other factors that could cause actual events, results, and opportunities to differ materially from those expressed or implied by such forward-looking information. Factors that could cause actual results to differ materially from such forward-looking information include, but are not limited to, changes in the state of equity and debt markets, fluctuations in commodity prices, delays in obtaining required regulatory or governmental approvals, environmental risks, limitations on insurance coverage, failure to obtain all necessary regulatory approvals, risks related to the ongoing COVID-19 pandemic and its impact on the Company, risks and uncertainties inherent in the exploration and development of mineral properties, and other risk factors set forth in the long-form prospectus of the Company dated July 22, 2022 under the heading “Risk Factors”, a copy of which is available on the Company’s SEDAR profile at www.sedar.com. Forward-looking information in this news release is based on the opinions and assumptions of management considered reasonable as of the date hereof, including, but not limited to, the assumption that general business and economic conditions will not change in a materially adverse manner. Although the Company believes that the assumptions and factors used in preparing the forward-looking information in this news release are reasonable, undue reliance should not be placed on such information. The Company disclaims any intention or obligation to update or revise any forward-looking information, other than as required by applicable securities laws.