



**MANAGEMENT'S DISCUSSION
AND ANALYSIS
FOR THE SECOND QUARTER ENDED ON**

SEPTEMBER 30, 2018

Prepared by:

**SQUATEX ENERGY AND RESSOURCES INC
7055 Boul. Taschereau, Suite 500
Brossard, Quebec, J4Z 1A7**

November 28, 2018

Squatex Energy and Ressources Inc

Management's Discussion and Analysis, Second Quarter ended September 30, 2018

INTRODUCTION

The following management's discussion and analysis ("MD&A") of the financial condition and results of operations of Ressources & Énergie Squatex Inc ("Squatex" or the "Company") constitutes the management's review of factors that affected the Company's financial performance for the six-month period ended **September 30, 2018** in comparison with data from the same period last year. This MD&A has been prepared in compliance with the requirements of National Instrument 51-102 – Continuous Disclosure Obligations, and should be read in conjunction with the non-audited six-month period ended September 30, 2018 and with the audited annual financial statements of the Company for the year ended March 31, 2018. The Company's condensed interim financial statements for the six-month period ended September 30, 2018 contained in this MD&A are prepared in accordance with International Financial Reporting Standards ("IFRS") including comparative figures. Results are reported in Canadian dollars.

FORWARD-LOOKING STATEMENTS

This report contains statements that are to be considered forward-looking statements. Such statements relate to future events or future economic performance of Squatex and involve risks, uncertainties and other known and unknown factors that may appreciably affect the results, performance or achievements against this or implications Squatex statements. Actual events or results could differ. Forward-looking statements include words or phrases such as "anticipates", "believes", "plans" or other words or phrases suggesting future outcomes of the infringement. Therefore, the decision to invest in securities of Squatex should at no time be based on such statements. Squatex disclaims any intention and undertakes no obligation to update such statements unless otherwise required by law.

DESCRIPTION OF BUSINESS

Squatex is incorporated under the Canada Business Corporations Act Corporations. Since April 3, 2017, Squatex's shares has been listed on the Canadian Stock Exchange ("CSE") under the symbol "SQX". The exploration and development of oil and gas properties in the territory of Quebec are the major activities of the Company. As part of achieving its objectives, the Company is required to enter into partnership agreements to reduce the risks and costs of its projects.

Squatex could not determine until now whether its properties contain hydrocarbon reserves that could be economically recoverable. This oil and gas exploration work has a very high degree of risk and there is no assurance that current exploration programs will result in production operations profitable for the Company. The value of the Company's interests in its oil and gas properties is dependent upon the existence of economically recoverable reserves and the Squatex capacity to find adequate financing to develop these reserves and possibly have a profitable future production.

Squatex favors in exploration programs it develops, areas where the chances of success are higher to ensure short term profitability. In recent years, its activities have been focused on its

Squatex Energy and Ressources Inc

Management's Discussion and Analysis, Second Quarter ended September 30, 2018

Lower St. Lawrence-Gaspé exploration permits located between Rivière-du-Loup and Rimouski, where it holds 24 licenses totaling 4 311.6 km² over Silurian-Devonian and Ordovician rocks to search for conventional oil and gas accumulations. Moreover, Squatex is hoping to reactivate its exploration in the St. Lawrence Lowlands area, where it holds 12 licenses totaling 2 249.33 km² on shale gas plays in the Utica / Lorraine and for the exploration of conventional traps within the Ordovician platform.

As of September 30, 2018 and as of the date of this report, the Company does not produce hydrocarbons. No proven reserves of oil or gas has been identified so far in the Squatex exploration permits.

OVERALL PERFORMANCE

Squatex and its 30% partner, Petrolympic, started in autumn 2012 a deep core drilling program in the Lower St. Lawrence area. After drilling the Redemption and Portage wells who had interesting oil shows, the Massé No.1 well was drilled over an AVO seismic anomaly (Amplitude vs. Offset) indicating the possible presence of fluids or porosity. The well met porous hydrothermal dolomites in the Sayabec Formation near the contact with the Val Brillant. In the interval between 1750 m and total depth of 1874 m, strong indications of gas and condensate were obtained and the cores showed porosity values measured in laboratory up to 20.8% with permeability reaching 1624 mD.

In July 2013, the Sayabec No.1 well targeting the Sayabec Fm limestones where a seismic amplitude anomaly was visible over a stratigraphic wedge, also met a dolomitized level with gas and oil shows before reaching a total depth of 759 m in the Cambrian-Ordovician rocks of the Quebec Group

Following these encouraging results, Squatex reprocessed (AVO Processing) all regional seismic lines of the Massé area to highlight possible zones of porosity in the Sayabec limestones. Nine additional wells sites locations in the area were chosen to assess the possible extension of the dolomitization observed in the Massé Structure.

In fall 2014, Squatex drilled the Massé No.2 well, located at about half a kilometer from the Massé No.1 well. The drilling equipment was then improved to facilitate operations, increase safety and ensure to meet all environmental standards by opting for a closed loop drilling mud recirculation system. The well ended at a depth of 1970m after reaching Cambrian-Ordovician rocks and after recording a series of logs in the hole. The well was equipped with safety and measurement instruments to be suspended and pressure monitoring is recorded continuously since the suspension. These data will provide valuable information about fluid migration dynamics and conditions at depth until Squatex proceeds with the programmed evaluation of the productivity of zones encountered while drilling.

In August 2015, Squatex initiated an academic partnership with the Institut National de la Recherche Scientifique (INRS) to carry out geoscientific studies of importance in the Lower St. Lawrence area to determined the reservoir potential of the Sayabec Formation. This in progress work will improve the knowledge of the stratigraphy and structure of this complex geological system and will validate the hydrocarbon potential of this region.

Squatex Energy and Ressources Inc

Management's Discussion and Analysis, Second Quarter ended September 30, 2018

An internal review carried out by Squatex in early 2016 revising recent data acquired in the Lower St. Lawrence region, mainly the Massé No.2 well logs, gave very interesting results that could impact the estimate of hydrocarbon in place over the Massé Structure. Squatex mandated In February 2016 the independent expertise of Sproule and Associates to verify and validate Squatex's results by doing their own interpretation of the same data. Results of this second Sproule report are significative, pointing out to a potential in place of 53.6 BCF of gas and 52.2 million barrels of oil over a probable average area of 5.2 km².

In November 2016, Squatex mobilized a drilling rig at the Massé No.2 site to rim and clean the hole to ensure of its integrity and of its ability to withstand the proposed additional work planned in the exploration program. The well was again suspended and secured. Squatex is looking for funding to resume the work planned on and around Massé. Present work being performed consists in the detailed analysis of data compiled over other areas that are similar to Massé in the Lower St. Lawrence.

In the St. Lawrence Lowlands, Squatex and its partner Petrolympic Ltd. ("Petrolympic") signed in 2008 a joint operations agreement ("Agreement") with Canbriam Energy Inc. ("Canbriam") with respect to farming in a series of drilling options over two licenses. Canbriam drilled a first well, Canbriam Farnham No.1 in 2009 and has earned a 60% interest over 8000 hectares within two licenses selected in the agreement. Canbriam did not exercise the other options provided before 30 September 2013 and the agreement has ended on that date. The abandonment of the Canbriam Farnham No.1 well and the rehabilitation of the site according to regulations was made during summer of 2015 by the operator Canbriam Energy.

During the six-month period ended September 30, 2018, no exploration work was done in the Lowlands other than tracking records, since all exploration work obligations in this area have been repelled in time, companies being exempted by the government of performing assessment work on their exploration permits (the holder must, however, pay the annual fee to retain its license). Consequently, Squatex do not plan to make any short-term exploration on its Lowlands permits. Squatex will comply to additionnal obligations stipulated by the ruling of the new law deposited in June 2018.

The current strategy of the Company is to prepare for the resumption of exploration of its oil and gas exploration licenses in partnership with Petrolympic while continuing to look for other business opportunities. In August 2018, Squatex paid the annual fees (annuities) to thereby retain its licenses in accordance with the regulations of the oil and gas law and intends to renew them at the next deadline. Squatex opted to be listed on the market and its shares are negotiated since April 3, 2017 under the symbol «SQX», in order to have easier access to the capital needed to fulfill its proposed exploration program in the Lower St. Lawrence,

Squatex Energy and Ressources Inc

Management's Discussion and Analysis, Second Quarter ended September 30, 2018

TRENDS

While general economic conditions continue to stagnate and relative stability seems to be emerging on the financial markets, significant uncertainty persists regarding the global outlook in the short and medium terms. In addition, various recent pronouncements about future Shale Gas exploitation in the Province of Quebec and the announcement of a strategic environmental study to be hold during up to three years, followed by the moratorium on exploration of shale gas will cause delays for the Company and / or its partners exploration work planned in the St. Lawrence Lowlands. The Management and the Board will monitor closely future developments on this and see their implications on the functioning of Squatex.

SUMMARY OF LAND POSITIONS

As of September 30, 2018, Squatex owns interests in a total of 6 560.93 km² (1,621,205 acres) of exploration oil and gas permits in the Appalachian Basin of Quebec over the St. Lawrence Lowlands and the Lower St. Lawrence-Gaspé areas (See attached map). The Company's properties in the St. Lawrence Lowlands is a 70% net interest in 2 249.33 km² (555.809 acres) in partnership with Petrolympic and 28% net interest from the surface to the Top of Trenton over 80.00 km² (19.768 acres) under an agreement with Canbriam, and 70% net in the same block below the Top Trenton. These properties represent a significant position in unconventional targets in the Utica-Lorraine shales and in conventional plays within the Trenton-Black River carbonates. Squatex also owns properties in the Lower St. Lawrence-Gaspé area consisting in a 70% net interest in 4 311.60 km² (1,065,396 acres) in partnership with Petrolympic. These property located between Rimouski and Rivière-du-Loup present interesting plays for oil and gas in reefs and in hydrothermal dolomites.

The following tables present the permits in force as of September 30, 2018 on which Squatex has an interest. For the location of the license, refer to the map.

Squatex Energy and Resources Inc

Management's Discussion and Analysis, Second Quarter ended September 30, 2018

ST. LAWRENCE LOWLANDS PERMITS - 70% OWNERSHIP:

Permit Number	Renewal	Area (km ²)
2009RS287	01/09/2019	208,71
2009RS288	01/09/2019	179,90
2009RS289	01/09/2019	209,09
2009RS290	01/09/2019	72,48
2009RS291	01/09/2019	224,47
2009RS292	01/09/2019	188,27
2009RS293	01/09/2019	145,80
2009RS294	01/09/2019	216,64
2009RS295	01/09/2019	193,16
2009RS296 (part)	01/09/2019	203,39 *
2009RS297	01/09/2019	163,42
2009RS298 (part)	01/09/2019	244,00 *
Sub-total		2 249,33

* A 60% interest between the surface and the Top of Trenton over a 80,00 km² block have been transferred jointly by Squatex and Petrolympic Canbriam. Squatex retain 70% below the Top Trenton.

ST. LAWRENCE LOWLANDS PERMITS - 28% OWNERSHIP: (FROM SURFACE TO TOP TRENTON):

Permit Number	Renewal	Area (km ²)
2009RS296 (part)	01/09/2019	203,39
2009RS298 (part)	01/09/2019	244,00
Sub-total		80,00 of 447,39

Squatex Energy and Ressources Inc

Management's Discussion and Analysis, Second Quarter ended September 30, 2018

LOWER ST. LAWRENCE/GASPE PERMITS - 70% OWNERSHIP:

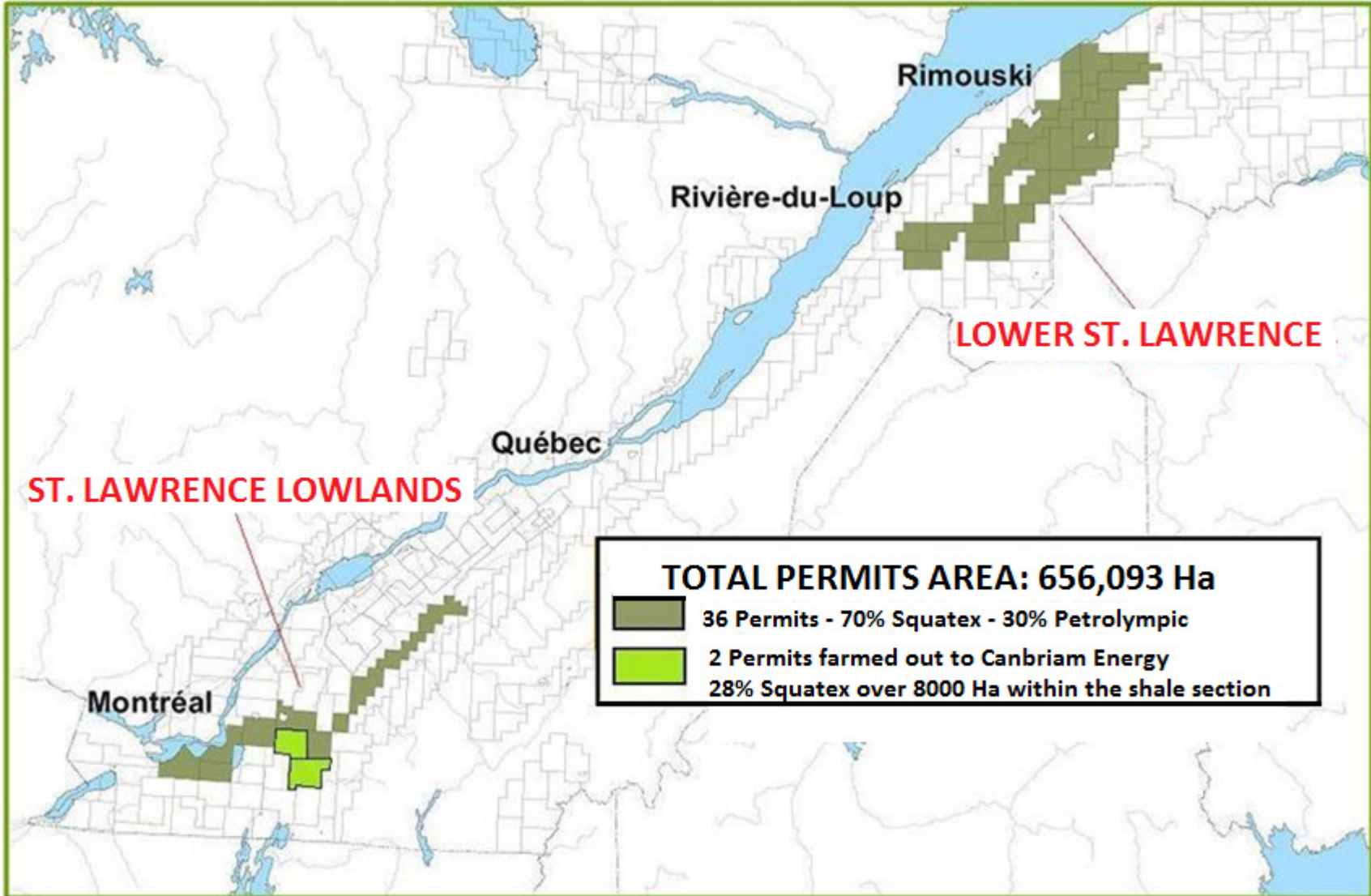
Permit Number	Renewal	Area (km ²)
2009RS299	01/09/2019	189,75
2009RS300	01/09/2019	207,04
2009RS301	01/09/2019	171,36
2009PG552	01/09/2019	102,67
2009PG553	01/09/2019	230,68
2009PG554*	01/09/2019	151,50
2009PG555	01/09/2019	164,38
2009PG556*	01/09/2019	236,66
2009PG557	01/09/2019	98,94
2009PG558	01/09/2019	194,20
2009PG559	01/09/2019	187,37
2009PG560	01/09/2019	198,17
2009PG561	01/09/2019	244,35
2009PG562	01/09/2019	198,47
2009PG563	01/09/2019	225,73
2009PG564	01/09/2019	143,77
2009PG565	01/09/2019	153,70
2009PG566	01/09/2019	214,54
2009PG567	01/09/2019	206,31
2009PG568	01/09/2019	206,68
2009PG569	01/09/2019	134,97
2009PG570	01/09/2019	76,08
2009PG571	01/09/2019	209,51
2009PG572	01/09/2019	164,77
Sub-total		4 311,60

* Gaspé area

Squatex Energy and Ressources Inc

Management's Discussion and Analysis, Second Quarter ended September 30, 2018

SQUATEX'S EXPLORATION PERMITS LOCATION MAP



EXPLORATION ACTIVITIES

LOWER ST. LAWRENCE-GASPE PERMITS

The compilation and integration in 2012 of all the encouraging results obtained in the area led to Squatex continue its coring program on new zones of interest. In September 2012, a first deep core hole was spudded in the northeast part of the Lower St. Lawrence permits block.

The Massé No.1 well, located in the Municipality of Ste-Jeanne D'Arc, was equipped with a BOP mounted on a casing cemented to a depth of 150 meters (equal to 10% of the total planned depth) and was supervised by a team of five engineers/geologists. Drilling was stopped in late November at a depth of 1710 meters due to harsh winter conditions. The well began in very disturbed beds of the St. Leon Formation, then, at 800 meters, went through reefal carbonates sequences similar to the Sayabec and / or West Point Formations, followed by overlapping basal Silurian sequences showing a 15 meters thick porous dolomites sequence in Sayabec reefs. Both reef sequences gave shows of gas and condensate that were sampled. Monitoring of the suspended well and frequent fluids analysis measurements were performed at regular intervals to ensure the safety and environmental friendliness during winter before resuming drilling.

The well was re-entered (Massé No.1A) in 2013 to drill through an AVO seismic anomaly indicating the possibility of the presence of fluids or porosity. This objective was met by giving strong flows of natural gas (89% methane) in a very porous and permeable dolomite at the base of the Sayabec near the Val Brilliant sandstone between 1750 m and 1874 m. The main porous zone was encountered between 1790 m and 1874 m a thickness of 10 m. Cores at 1847 m and deeper show porosities up to 20.8% and permeability up to 1624 m. The Massé No.1 was abandoned and cemented to a total depth of 1874 m without being able to go across the 40 m remaining in the Val Brilliant.

Subsequently, the drill was moved to the Sayabec No.1 site. This location was selected to verify the possibility of presence of dolomitization in the Sayabec Formation limestone where a seismic amplitude anomaly is visible over a stratigraphic wedge near the boundary of the permit. A porous dolomitized level was actually encountered near the base of Sayabec giving oil and gas shows before reaching total depth at 759 meters in Cambrian-Ordovician rocks of the Quebec Group.

Following the in-depth analysis of drilling results Massé No.1, Squatex issued November 20, 2013 a press release announcing the discovery of a reservoir which could contain a significant amount of conventional natural gas. The new coring data acquired in 2013 helped to reinterpret the various cumulative data since 2001 on the territory of the Lower St. Lawrence-Gaspé to delimit areas with better hydrocarbon potential and target locations for future drilling.

In fall 2013, Squatex reprocessed the Massé region seismic profiles with a special software (AVO) to highlight possible areas of porosity in the Sayabec Formation. The interpretation of these results has identified nine additional drilling locations in the area showing seismic AVO porosity anomalies similar to that found in the Massé structure.

In April 2014, an independent study of undiscovered possible petroleum initially in place that could contain the Massé Structure was conducted by the international firm Sproule and

Ressources & Énergie Squatex Inc

Management's Discussion and Analysis, Second Quarter ended September 30, 2018

Associates that performed their own interpretation of seismic with data obtained from the Massé No. 1 well. The report confirmed the preliminary volume assessment made by Squatex and results were presented by Squatex in a press release.

The structural interpretation of the seismic shows that the prospective AVO zone over the Massé Structure could span over some 40 km², which could result, using similar parameters measured in the well, by a reservoir having a volume likely to reach 100 BCF (over the three levels encountered). The independent report by Sproule and Associates determined that an average of 12 BCF of gas initially in place over an average area of 10 km² was considering a single porous level and an area limited to local seismic coverage without taking into account major regional structural lines. According to Squatex, reservoir extensions could expand on over 300 km² as shown by AVO porosity anomalies observed on the reprocessed regional seismic lines.

In September 2014, Squatex spudded the Massé No.2 well after running a 210 m casing to protect the groundwater environment. This new well is located on the same structure drilled by the Massé No.1 well. The drilling equipment was greatly improved to facilitate operations, increase safety and ensure to meet all environmental standards by opting for a closed loop drilling mud recirculation system.

Drilling operations were completed on November 28, 2014 on the Squatex Massé No.2 well after crossing the Val Brillant Formation and reaching Cambrian-Ordovician rocks. A full suite of logs was recorded in the hole and the wellhead was equipped with safety and measurement instruments before the hole was suspended. Since its suspension, pressure data is being monitored continuously and analyzed. These data will provide valuable information about fluid migration dynamics and conditions at depth until Squatex proceeds with the programmed evaluation of the productivity of zones encountered while drilling. Regular visits to the drilling site are conducted to collect data and verify the integrity of all the components installed on the well.

Squatex issued a press release on February 19, 2015 announcing the interesting preliminary results obtained in the Massé No.2 stratigraphic well. On July 31, 2015, Squatex issued a new press release following a more complete analysis of the results of the Massé No.2 well.

In August 2015, Squatex announced the completion of an academic partnership with the Institut National de la Recherche Scientifique (INRS) to carry out geoscientific studies of importance in the Lower St. Lawrence area. The studies to provide 3D modeling and determining the reservoir potential of the Sayabec Formation will improve the knowledge of the stratigraphy and structure of this complex geological system and will validate the hydrocarbon potential of this region. Geological field work and in depth cores analyses were performed during the fall and the study on the results obtained are almost completed.

An ongoing review by Squatex of all data acquired in the region, mainly those on logs recorded in the Massé No.2 well gave very interesting results that could change the estimate of hydrocarbon in place in the Massé Structure. Squatex decided in February 2016 to appeal again to the independent expertise of the international firm Sproule and Associates to verify and validate Squatex's results by doing their own interpretation of the same data.

The final Sproule report was received on May 6, 2016 and its significant results are presented in the following excerpt from the press release issued by Squatex on May 17, 2016:

Ressources & Energy Squatex ("Squatex" or the "Company") and its partner Petrolympic Ltd. ("Petrolympic") (TSX.V: PCQ) are pleased to announce the results of a major

Ressources & Énergie Squatex Inc

Management's Discussion and Analysis, Second Quarter ended September 30, 2018

reassessment of resources for the eastern part the Massé structure performed independently by Sproule Associates Limited ("Sproule"). The Massé structure is located in the Lower St. Lawrence permits, some 25 km southeast of Mont-Joli, in the Appalachian Basin of Quebec. Squatex owns a 70% interest in 656,093 hectares (1,621,241 acres) of exploration permits in Quebec over which it is the operator under a joint operation agreement with Petrolympic.

The resources reassessment reported by Sproule includes an authentication of in depth analyzes performed by the Squatex's technical team on the Massé No.2 well logs. These new data complete and confirm the initial data previously acquired in the Massé No.1 well for the eastern part of the Massé structure. Sproule considers that the results of its resources simulations could extend over a probable average area of 5.2 km².

The potential resources evaluated by Sproule are related to porous levels in the St. Leon and Sayabec Formations encountered in the wells drilled in the eastern part of the Massé structure. The results of the study point out to a potential of 53.6 BCF of gas and 52.2 million barrels of oil over a probable average area of 5.2 km², an oil equivalent total of 61.1 million barrels (MMBOE).

Resource volumes for Massé have been increased significantly compared to the previous estimate done in 2014 with the addition of a very important oil volume. Gas resources are also improved considerably following the analysis based on the logs recorded in the Massé No.2 well.

The gross pay of the Silurian basin rock of the Lower St. Lawrence extends up to a nearly 540m thick interval recognized by Sproule from the logs in which the net pay varies between 66m and 210m averaging, 130m in thickness. These porous zones are more than encouraging for further work and validate the potential of this region of the Lower St. Lawrence area.

Jean-Claude Caron, President and Chief Executive of Squatex, declares: « Results of the Sproule report make me believe that Massé could be one of the most important discoveries of conventional oil and gas reservoirs made to date in Quebec ». Indeed, the Sproule Report points out a probable presence of 10.3 BCF of gas and 10 MMbbl oil per square kilometer. According to an internal study of Squatex's technical team, the Massé structure could extend over more than 80km². Several porosity anomalies observed on seismic having close similarities the anomalies confirmed by the Massé No.1 and No. 2 wells were also highlighted further west within the property. The assessment done by Sproule does not take into account the presence of these seismic features, these ones being located in their view too far away from the drilled wells. Their occurrence nevertheless represents a significant potential for the Property. Results of the current Sproule study illustrate the rightful vision and efforts of Squatex and Petrolympic who pioneered the development of the oil and gas potential of the Lower St. Lawrence.

Squatex and its partner Petrolympic are currently setting up a new drilling program to further validate the potential of the Massé structure and they also intend to keep on with the coring exploration program to validate and test similar prospective structures that have been identified over their permits.

Ressources & Énergie Squatex Inc

Management's Discussion and Analysis, Second Quarter ended September 30, 2018

Results of the resource assessment over 5.2 Km² from the Sproule Report (May 6, 2016)

Structure	Formation		Low ⁴	Best ⁵	High ⁶	Mean ⁷
			(P ₉₀)	(P ₅₀)	(P ₁₀)	
Massé	St. Leon	Gas (BCF) ^{2,3}	0.2	1.0	3.8	1.6
		Oil (MMbbl) ^{2,3}	2.0	9.9	42.2	17.0
	Sayabec	Gas (BCF) ^{2,3}	4.4	24.0	119.7	49.0
		Oil (MMbbl) ^{2,3}	2.9	17.1	87.3	35.8
Total ⁷		Gas (BCF) ^{2,3}	5.7	26.8	127.6	53.6
		Oil (MMbbl) ^{2,3}	10.0	33.9	113.6	52.2
		MMBOE ^{2,3,7}				61.1

Notes:

¹ Undiscovered Petroleum Initially-In-Place (equivalent to undiscovered resources) is that quantity of petroleum that is estimated, on a given date, to be contained in accumulations yet to be discovered. The recoverable portion of undiscovered petroleum initially in place is referred to as "prospective resources," the remainder as "unrecoverable." Only the in-place volumes are presented here as a development project to recover any hydrocarbons discovered has not been defined. **There is no certainty that any portion of these unrisked undiscovered PIIP will be discovered and, if discovered, there is no certainty that it will be developed or, if it is developed, there is no certainty as to either the timing of such development or whether it will be commercially viable to produce any portion of the resources.**

² These are the project gross unrisked undiscovered petroleum initially in place volumes (i.e. 100% project gross) estimated for the Sayabec Formation of the Eastern Massé Structure without any adjustments for working interest and before deduction of any royalties.

³ "BCF" is billions of cubic feet, "MMbbl" is millions of barrels of oil, "MMBOE" is millions of barrels of oil equivalent. BOE's may be misleading, particularly if used in isolation. A BOE conversion ratio of 6 Mcf:1 bbl is based on an energy equivalency conversion method primarily applicable at the burner tip and does not represent a value equivalency at the wellhead.

⁴ Low Estimate is considered to be a conservative estimate of the quantity that will actually be in-place. It is likely that the actual remaining quantities in-place will exceed the low estimate. If probabilistic methods are used, there should be at least a 90 percent probability (P90) that the quantities actually in-place will equal or exceed the low estimate.

⁵ Best Estimate is considered to be the best estimate of the quantity that will actually be in-place. It is equally likely that the actual remaining quantities in-place will be greater or less than the best estimate. If probabilistic methods are used, there should be at least a 50 percent probability (P50) that the quantities actually in-place will equal or exceed the best estimate.

⁶ High Estimate is considered to be an optimistic estimate of the quantity that will actually be in-place. It is unlikely that the actual remaining quantities in-place will exceed the high estimate. If probabilistic methods are used, there should be at least a 10 percent probability (P10) that the quantities actually in-place will equal or exceed the high estimate.

⁷ Statistical aggregation is the process of probabilistically aggregating distributions that represent estimates of resource quantities at the reservoir, prospect, or portfolio level. Arithmetic summation and statistical aggregation of the means yield similar results. Arithmetic summation of the Low Estimate, Best Estimate and High Estimate are not statistically appropriate. Both the statistical and arithmetic summation of the unrisked prospects may be misleading because it assumes success for each of the prospect entities. The chance of this occurring is extremely unlikely. Actual recovery is likely to be less and may be zero.

In November 2016, Squatex mobilized a fully equipped drilling rig at the Massé No.2 site to carry some maintenance work. The hole was rimmed and cleaned to ensure of its integrity and to verify its ability to withstand the proposed additional work planned in the exploration program. The well was suspended again and secured. Squatex is presently studying in details data compiled over other zones similar to Massé in the Lower St. Lawrence in order to possibly extend the hydrocarbon potential of the region.

The company is currently reassessing its funding requirements and is actively involved in the search for an investment to resume its exploration work planned. Squatex's shares are now listed on the Canadian Stock Exchange ("CSE") since April 2017 under the symbol "SQX".

Ressources & Énergie Squatex Inc

Management's Discussion and Analysis, Second Quarter ended September 30, 2018

ST. LAWRENCE LOWLANDS PERMITS

Due to the government's decision to hold for this area a strategic environmental assessment on shales gas exploration and exploitation and restrictions and delays that the latter has made, followed by the moratorium on exploration of shale gas put into force by the government, Squatex and its partners do not plan to make any short-term exploration on its Lowlands permits, as long as conditions do not change. The operator over two permits in the Lowlands, Canbriam Energy proceeded with the abandonment of the Canbriam Farnham No.1 well and has rehabilitate the site in Summer 2015 according to regulations.

EXPLORATION EXPENSES INCURRED

The Company relies on the professional expertise of its team of geologists to manage and supervise its exploration programs. Management assesses the legitimacy of proposed exploration programs and approves expenses judged useful and appropriate in order to progress knowledge in a prudent and necessary way. For the first three-month period ended on September 30, 2018, Squatex spent \$ 57,952 (\$ 87,875 for the three-month period ended September 30, 2017) on its unproved properties of oil and gas. On these amounts, Squatex will receive tax credits relating to resources of \$ 5,295 (\$ 13,685 for the quarter ended September 30, 2017), representing net exploration and evaluation expenses of \$ 52,657 for the quarter ended September 30, 2018 and \$ 74,190 for the quarter ended September 30, 2017. Exploration and evaluation expenses, net of tax credits, for the six-month period ended September 30, 2018 are \$ 103,286 compared to \$ 158,275 for the same period last year. Following the interesting results obtained with drilling Massé No.1 and No.2, the Company is reviewing its financing of exploration expenses to conduct further geological work in the same environment. An exploration program over two years in the Lower St. Lawrence with several other core sampling has been defined in order to specify the extent of the level (s) of the reservoir and hydrocarbon potential of the area under license.

TECHNICAL DISCLOSURE

The technical disclosures appearing under the title "Overall Performance" and "Exploration Activities" were prepared by Paul Laroche, P. eng, P. geo, who is a qualified person under National Instrument 51-101.

OBLIGATIONS

In order to maintain its exploration licenses, Squatex must pay an annual rent of \$ 10.30 per km² and perform statutory work a minimum of \$ 50.00 per km² the first year, increasing to \$ 50.00 km² each subsequent year up to five years. At the end of this initial period, the Company has the option to renew the license for five years by paying an annual rent of \$ 51.50 per km² and by performing a minimum of work of \$ 250.000 per km². Additional credits to the minimum required for statutory expenses are granted by the government and serve to reduce subsequent obligations. Law 18, passed June 13, 2011, procures exemption to the obligations of performing minimum work during the conduct of the strategic environmental assessment. Nevertheless, Squatex continued doing work in the Lower St-Lawrence area. Since the filing of the regulations that took effect on September 5, 2018, the exemption has been lifted. Squatex will comply with it

in due course. In August 2018, Squatex has met the payment requirements to all existing license and plan to do it at the next deadline.

ENVIRONMENTAL RESPONSIBILITY

The Company is subject to government laws and regulations concerning environmental protection. Environmental consequences are difficult to identify in terms of results, time and impact. To the best of his knowledge, Squatex conducts its operations with standard practices in order to be coherent with legislation and government regulations in an environmental matter.

RISKS AND UNCERTAINTIES

The oil and gas exploitation involves many risks, which can even withstand a combination of experience, knowledge and careful evaluation. The long-term commercial success of Squatex depends on its ability to find, acquire, develop and commercially exploit reserves of oil and natural gas. Without the continual addition of new reserves, the ones that could hold Squatex at some point, and their potential for exploitation, could decrease over time. A future increase of the reserves owned by Squatex will depend not only on its ability to carry out exploration and development of properties it may hold from time to time, but also on its ability to select and acquire producing properties and appropriate possible productive areas. It is impossible to certify that Squatex will be able to identify acceptable properties for acquisition or participation. In addition, even if such acquisitions or participations opportunities are identified, Squatex may decide that based on current market conditions, terms of acquisition and participation or pricing meaning that such acquisitions or participations would be unprofitable. We can't ensure that Squatex will manage to discover or acquire oil fields or natural gas. Even if Squatex manage to find these, we can't ensure that these resources are of commercial quantities.

STRATEGIC ENVIRONMENTAL STUDY AND MORATORIUM ON SHALE GAS

In 2011, Quebec government has given to the Bureau d'Audiences Publiques sur l'Environnement ("BAPE") a mandate to conduct an inquiry and public hearings on sustainable development of Utica Shale in Quebec. The BAPE report led the Quebec government to conduct a Strategic Environmental Assessment ("SEA") whose results were finally released in January 2014. During this time period of almost three years where a moratorium on exploration of gas shale was established, the Company's exploration activities, like those of all the other Quebec's firms, have stopped completely on the territory of the Lowlands of the St-Lawrence, the obligations of work permits being suspended by law 18 passed June 13, 2011 and due to the high level of uncertainty raised by many citizen groups about the future of oil and gas exploration in Quebec. This period of uncertainty will continue as long as the government will not establish clear rules for the recovery of investment for exploration. The new regulations presented in June 2018 prohibit fracking, which amounts to banning the exploitation of shale gas in Québec.

UNCERTAINTY AS OF THE ESTIMATED RESERVES OF NATURAL GAS AND CRUDE OIL

The estimated oil and gas reserves is a complex process that relies on a considerable number of decisions and assumptions for assessing the geological, geophysical, engineering and economic that are available for each reservoir. Therefore, these estimates are fundamentally imprecise.

Ressources & Énergie Squatex Inc

Management's Discussion and Analysis, Second Quarter ended September 30, 2018

Actual data regarding the future production, revenue and expense of oil and gas may vary significantly. Each significant fluctuation in these assumptions could have a significant impact on the estimated quantities and the present values of the reserves. Furthermore, these reserves are subject to upward or downward revision in light of production history, results that will be obtained during exploration work and set value of the prevailing for oil and gas and other factors, many of which are beyond the control of Squatex. It is likely that real output and income, taxes, development of expenditures and operation expenses against reserves will vary from the current estimates and these variations could be material.

As of September 30, 2018, there is no reserve of oil and gas proved, likely or possible on land held by Squatex.

REGULATORY IMPACT

The oil and gas industry is subject to extensive controls and regulations put in place by the various levels of government targeting prices, royalties, ownership of land, production quotas, import and export of oil and gas and environmental protection. There is no way to forecast with certainty the impact of these controls or regulations on the operations of the Company or modifications to the following.

The oil and natural gas industry is currently subject to environmental regulation pursuant to various federal and provincial laws. The laws include restrictions and prohibitions on the issue or the release of various substances produced or used for certain operations of the oil and gas industry, which have impact on well and facilities location and the extent to which the exploration and development are allowed. In addition, the legislation requires the resignation and reevaluation of wells and facilities to be carried out to the satisfaction of provincial authorities. Violation of these laws can result in fines and penalties, suspension or revocation of permits and authorizations necessary for the operation of a business and liability for damage caused by pollution. In Quebec, environmental compliance matters are governed, since September 21, 1972, by law, entitled Environmental Quality Act (the "Quebec Act Environmental Protection").

The Quebec law on environmental protection imposes requirements of environmental protection, information and surveillance. In addition, it sets up a process of impact assessment and wider public consultation on matters of environmental assessment and enforcement.

PERMITS, LICENCES AND APPROVALS

In Quebec, those looking for oil or natural gas must hold an oil and gas exploration license issued under the Mining Act (Quebec). The permit is issued for a given territory, to any person who meets the requirements and pays the annual fee prescribed by regulation. The period of validity of a given licence is five years. It can be renewed for a period of one year, up to five times, for all or part of the territory which is subject to certain conditions specified in the Mining Act (Quebec).

The holder of a petroleum and natural gas exploration permit must perform each year, in the given territory subject to the permit, work which nature and minimum cost are specified by regulation, including geological and geophysical studies or drilling. The minimum costs to be incurred vary according to the age of the permit.

Ressources & Énergie Squatex Inc

Management's Discussion and Analysis, Second Quarter ended September 30, 2018

Following the exploration permits granted by the Ministry of Natural Resources, the Company, in order to maintain the validity of its licences, must pay a rent of \$ 10.30 per km², and has to perform on the territory, minimum exploration expenses of \$ 50.00 per km², increasing of \$ 50.00 per km² each year to a maximum of \$ 250.00 per km². To be noted that duration of permits will be extended the equivalent time to holding the SEA with suspension of work obligations during this timeframe as long as the licensee pays its annual rent. The rent payments for the current year was made by Squatex in August 2018 and the Company intends to do the same for the following years in order to retain its permits.

PROPERTY TITLES

Even though the Company has taken reasonable measures to ensure proper title to its properties, there is no certainty that any shares of its properties will not be challenged or questioned. Third parties may have valid claims to portions underlying the interests of the Company. No appeal has been filed or brought to the attention of Squatex to date.

FUTURE FUNDING NEEDS CONCERN

The Company will need additional financing in the future to continue its activities, especially its exploration programs and development. If financing is obtained by issuing new shares, control of Squatex may be affected and shareholders may suffer additional dilution. To the extent that financing is not available, this could affect the commitments of work which could result in the inability of the Company to pursue, in totality or partly, its planned exploration and development program, property rights or revenue opportunities loss for the Company. To this end, the Company recently announced the appointment of an independent consultant acknowledged to the Cree First Nations in order to create business connexions and allow the progress of the oil and gas exploration project of Squatex in the Lower St. Lawrence.

DEPENDENCE OF KEY PERSONNEL

The success of the Company depends largely on the quality of management. The loss of these people, or inability to interest equivalent qualified people could have a material adverse impact on operations and business prospects of the Company.

MARKETING

The Company operates in a competitive environment where raw materials prices depends of many factors that are beyond control of the Company. The prices of oil and natural gas have fluctuated greatly in the past. Oil prices are based on supply and demand at international level and political events, including the Middle East, may have an important influence on oil prices and supply globally. Any decrease in the price of oil and natural gas could have a material adverse effect on future operations and financial position of the Company and the level of expenses for acquisition of future supplies of oil and gas. In addition, the marketing of production of the Company depends on the availability and capacity of gathering systems and pipelines, of the consequences of federal and provincial regulations and on the general economic conditions. All these factors are beyond control of the Company.

The price of natural gas sold in interprovincial and international trade is determined by negotiation between buyers and sellers. The price received by a natural gas producer depends,

Ressources & Énergie Squatex Inc

Management's Discussion and Analysis, Second Quarter ended September 30, 2018

partly, on the prices of competing fuels, like natural gas produced, the access to downstream transport, the length of contracts, the climatic conditions and the balance of supply and demand.

RISK OF PROSECUTION

The Company may be liable because of pollution or other risks against which it could not be assured or against which it may elect not to insure, given the high cost of premiums or for other reasons. The payment of money to do so could result in the loss of assets of the Company.

LAND CLAIMS

None of the properties in which the Company holds an interest is currently subject to any official land claims by Aboriginal nations. No assurance can be given, however, to the effect that this will not be the case in the future.

AVAILABILITY OF DRILLING EQUIPMENT AND ACCESS

Oil and gas exploration and production activities depend on the ability to have access to drilling equipment and other related equipment especially in areas where these activities are exercised. Limited demand for such equipment or restrictions on land access may impact the Company's ability to acquire and use such equipment and may delay exploration activities or the eventual production of the resource.

GROWTH MANAGEMENT

The Company may be subject to risks associated to its growth, including restraints and pressure on its internal systems and controls. The ability of the Company to conduct an effective growth management will require to implement and continuously improve its operating systems and financial reporting and to enhance, develop and manage his basic labor. The inability of the Company to face growth could have a material adverse impact on its business, operations and prospects.

Ressources & Énergie Squatex Inc

Management's Discussion and Analysis, Second Quarter ended September 30, 2018

SELECTED FINANCIAL INFORMATION

FOR THE SIX-MONTH PERIOD ENDED SEPTEMBER 30, 2018 AND 2017

	2018	2017
EXPLOITATION	\$	\$
Net exploration and evaluation expenses	103,286	158,275
Net loss and total comprehensive loss	- 356,115	- 548,046
Net and comprehensive loss per basic and diluted share	- 0.0032	- 0.0052

QUARTERLY INFORMATIONS

	Year ended on March 31 2019		Year ended on March 31 2018				Year ended on March 31 2017	
	Q2	Q1	Q4	Q3	Q2	Q1	Q4	Q3
	\$	\$	\$	\$	\$	\$	\$	\$
Revenue	—	—	—	—	—	—	—	—
Net results	(192 839) \$	(163 276) \$	(183 124) \$	(176 295) \$	(274 674) \$	(273 372) \$	(211 843) \$	101 616 \$
Total assets	122 491 \$	118 077 \$	105 302 \$	163 100 \$	182 510 \$	309 214 \$	405 779 \$	426 186 \$
Total liabilities	318 682 \$	1 958 307 \$	1 818 256 \$	1 771 600 \$	1 682 682 \$	1 618 664 \$	1 533 800 \$	1 367 736 \$
Basic and diluted earnings per share	(0,0017) \$	(0,0015) \$	(0,0017) \$	(0,0017) \$	(0,0026) \$	(0,0026) \$	(0,0020) \$	0,0010 \$

REVENUE

During the six-month period ended September 30, 2018, no activity generated by Squatex has produced income beside some non-significant financial income.

NET PROFIT

The net and overall loss decreased from \$ 548,046 for the six-month period ended September 30, 2017 to \$ 356,115 for the six-month period ended September 30, 2018. This decrease in the loss is mainly due to a reduction in expenses to a minimum. As a result, exploration expenses decreased by \$ 54,989 and general and administrative expenses by \$ 25,763 mainly due to the decrease in professional services fees of \$ 30,654 (explained by the resignation in January 2018 of the Director of development). There was also a decrease in interest on the due to a company under common control of \$ 14,079 compared to the same period of 2017) since the due to a common controlled company was converted, on August 21, 2018, into 18,008,780 common shares of the Company. In addition, the Company had recorded a stock-based compensation

Ressources & Énergie Squatex Inc

Management's Discussion and Analysis, Second Quarter ended September 30, 2018

expense of \$ 103,895 during the six-month period ended September 30, 2017 to reflect the award on June 6, 2017 of 1,000,000 options for directors, exercisable at a rate of 35% at the time of grant; 30% after the end of the 3rd month following the grant; 20% after the end of the 6th month following the grant and 15% after the end of the 9th month following the grant, at the exercise price of \$ 0.35 per share and with a maturity date of June 5, 2022.

	ON SEPTEMBER 30 2018	ON MARCH 31, 2018
STATEMENT OF FINANCIAL POSITION		
Working capital (negative)	- 196,192	- 430,260
Total assets	122,491	105,302
Total liabilities	318,682	1,818,256
Shareholder's equity (deficiency)	- 196,191	- 1,712,954

STATEMENT OF FINANCIAL POSITION

The Company's working capital improved by \$ 234,068 between March 31, 2018 and September 30, 2018, as interest payable on the amount due to a company under common control amounted to \$ 249,500 as at March 31, 2018, were converted into common shares on August 21, 2018. as cash balances are lower as no new funding was obtained during the year. The accounts receivable increased because the re-invoicing to our partner Petrolympic has accumulated during the last six months. Amounts related to this account receivable were received after September 30, 2018. The tax credits receivable as at March 31, 2018 (\$ 53,234) were collected at the end of August 2018.

	2018	2017
CASH FLOW		
Cash flows from operating activities	- 143,136	- 283,851

LIQUIDITY

As at March 31, 2018, the Company had \$ 11,056 in cash. As at September 30, 2018, the Company had \$ 57,920 in cash, an increase of \$ 46,864. The increase in cash is mainly due to the fact that a company under common control injects funds for the payment of the entity's ongoing operations. As at August 21, 2018, the amounts injected by the company under common control as well as the interest accrued on these amounts were converted into 18,008,780 common shares of the Company. The fact that a company under common control waives the payment of its services and that a company under common control awards advances to Squatex also allows the Company to maintain a positive cash balance. The cash flow from

Ressources & Énergie Squatex Inc

Management's Discussion and Analysis, Second Quarter ended September 30, 2018

operating activities improved between the two six-month periods ended September 30, 2018 and September 30, 2017 given the decrease in expenses to a strict minimum and the receipt of tax resource credits in August 2018 rather than in October 2017. The Company believes to be able to complete the short-term minimum development plans.

However, the Company has not yet found a property that contains economically mineable oil and gas reserves and therefore has not generated any revenue or cash flow from its operations to date.

GOING CONCERN

The Company's ability to continue its operations depends on obtaining new financing necessary for the continued exploration of its gas and oil properties as well as the continuous support of suppliers. While the Company has been successful in funding its exploration programs and operations over the past few years, there can be no assurance that it will succeed in securing further financing in acceptable terms in the future. These significant uncertainties cast significant doubt on the Corporation's ability to continue its operations and therefore the appropriateness of the use of IFRS applies to continuing operating entities.

The financial statements have not been adjusted to the carrying amounts of assets and liabilities, revenues and expenses and the classification used in the statement of financial position if the assumption Continuity of operation was not appropriate. These adjustments could be significant.

FUNDING SOURCES

The main source of funding comes from the investment of the equity holders, the due to a company under common control, the waiver, by a company under common control, of its fees for a total period of 66 months as at September 30, 2018 and the refundable tax credit for resources.

OFF-STATEMENT ARRANGEMENT

As of September 30, 2018, the Company does not have any off balance sheet settlement other than significant commitments related to statutory obligations for exploration licences it hold.

RELATED PARTY TRANSACTIONS

Related party transactions were made with companies whose main leader is also a director or a principal officer of the Company. Total related party transactions for the six-month period ended September 30, 2018 also includes transactions with key management.

	2018	2017
	\$	\$
Management fees	12,000	12,000
Professional services	42,000	66,000
Net exploration and evaluation expenses for tax credits	88,660	116,960
Financial expenses	78,683	85,416

PROVISION

On October 23, 2015, the Company received a notice of assessment of tax authorities for the years ended March 31, 2012, 2013 and 2014, declining certain expenses in the resource calculation credits. The contribution totals \$ 208,805, including \$ 26,163 on interest. The Company disagrees with the notice of assessment and initiated a process of opposition to justify its claims. All without prejudice as to the entire objection process and judicial proceedings that may ensue, the Company believes that the maximum exposure is a claim of the refundable tax credits relating to resources already cashed which would amount an approximate total of \$ 189,992 at June 30, 2018, excluding any applicable interest if the expenses referred in the notice of assessment projects are ultimately rejected.

ADOPTION OF ACCOUNTING STANDARDS

IFRS 2 - Share-based payments

In June 2016, the IASB issued an amendment according to IFRS 2 to clarify how to measure cash-settled share-based payments and how to record a change to convert a cash-settled allocation in an allocation settled in equity instruments. The amendment to IFRS 2 is mandatory for fiscal years beginning on or after January 1, 2018.

The Company has concluded that these changes have no impact on its interim financial statements as no share-based payment has occurred during this period.

IFRS 9 – Financial instruments

IFRS 9 Financial Instruments issued in July, 2014 is the IASB's replacement of IAS 39 Financial Instruments: Recognition and Measurement. IFRS 9 introduces improvements including a more logical standard of classification and measurement of financial assets, a more prospective depreciation standard based on expected credit losses and a substantially modified hedge

Ressources & Énergie Squatex Inc

Management's Discussion and Analysis, Second Quarter ended September 30, 2018

accounting model. The new standard is effective for annual periods beginning on or after January 1, 2018. Management has not yet determined the impact that this standard will have on its financial statements.

The Company has concluded that the adoption of this standard does not have a significant impact on its interim financial statements.

FUTURE ACCOUNTING CHANGES

IFRS 16 – Leases

In January 2016, the IASB issued IFRS 16. IFRS 16 describes the principles for the recognition, measurement, presentation and disclosure of leases for both parties to a contract, which is the customer ("lessee") and the supplier ("lessor"). IFRS 16 replaces IAS 17, Leases ("IAS 17") and related interpretations. All leases result in the lessee obtaining the right to use an asset from the beginning of the lease and, if lease payments are staggered over time, the tenant also gets financing. Therefore, IFRS 16 eliminates classification of leases as either operating leases or finance leases as required by IAS 17 and instead introduces a single accounting model for tenants. Applying that model, a lessee is required to recognize:

- (i) assets and liabilities for all leases with a term of more than 12 months, unless the underlying asset is of little value; and
- (ii) depreciation of leased assets separately from its lease liabilities in the statement of profit or loss.

This standard applies to fiscal years beginning on or after January 1, 2019.

The Company has not yet determined the impact that this standard will have on its financial statements.

FINANCIAL INSTRUMENTS AND OTHER INSTRUMENTS

The carrying value and fair value of Squatex's financial instruments are substantially the same given their short maturity, except where otherwise stated in the analysis below.

Squatex's financial assets classified as loans and receivables are: cash, accounts receivables (excluding sales tax) and the investment debenture. The shares of Canadian public companies and the investment conversion option in a debenture are classified as financial assets at fair value through profit or loss.

Squatex's financial liabilities consist of debts to suppliers and other payables, provisions and due to a company under common control that are classified as financial liabilities measured at amortized cost.

OUTSTANDING SHARES AND SECURITIES

The following table shows the number of outstanding shares as at November 28, 2018 and the total number of outstanding securities :

Common shares	123,850,656
Stock options	600,000

ADDITION REQUIREMENTS FOR EMERGING ISSUERS WITHOUT SIGNIFICANT OPERATING PRODUCTS

The principal activity of the Company is oil and gas exploration and the assessment of work conducted by the Company is presented in the 51-101 report which can be found on SEDAR.

ADDITION INFORMATION

This MD&A is dated November 28, 2018. This same report and more information on the Company is available on SEDAR at www.sedar.com.