

**Form 51-102F3**  
**Material Change Report**

**1. Name and Address of Company**

**Recharge Resources Ltd.**  
700-838 West Hastings Street  
Vancouver, B.C V6C 0A6  
(the "Company")

**2. Dates of Material Change(s)**

January 23, 2023

**3. News Release(s)**

News release was issued on January 27, 2023 and disseminated by Globe Newswire pursuant to section 7.1 of National Instrument 51-102.

**4. Summaries of Material Changes**

The Company has engaged TD Media LLC dba Life Water Media LLC, of Houston, Texas ("TD Media"). The services to be provided by TD Media include digital media, marketing strategies, advertising, and awareness campaigns. The engagement of TD Media will extend for a period of six months, commencing on January 23, 2023.

**5. Full Description of Material Changes**

News Release dated January 27, 2023 – See Schedule "A".

**6. Reliance on subsection 7.1(2) or (3) of National Instrument 51-102**

Not applicable.

**7. Omitted Information**

No information has been omitted.

**8. Executive Officer**

Mr. David Greenway, CEO and Chairman of the Company, is knowledgeable about the material change contained herein and may be reached at 778-588-5473.

**9. Date of Report**

This report is dated January 27, 2023

**SCHEDULE "A"**  
**to the Material Change Report dated January 27, 2023**

**PARADIGM DRILLERS ARRIVE AT BRUSSELS CREEK FOR DRILL PROGRAM WITH DATA ANALYSIS ONGOING AT POCITOS 1 LITHIUM AND GEORGIA LAKE LITHIUM PROJECTS**

**Vancouver, BC – January 27, 2023** - Recharge Resources Ltd. ("Recharge") (RR: CSE) (RECHF: OTC) (SL50: Frankfurt) announced that Paradigm drillers arrived on site today for the Company's fully-funded winter drill program at Recharge's 100% owned Brussels Creek Gold-Copper-Palladium Project in Kamloops, BC, Canada.

Paradigm Drilling delivered the skid mount, Boyles 25 model drill rig to the staging area near the Brussels Creek Property with drilling about to commence to complete 900 meters of NQ size core drilling in 3 holes. Of these 900 meters, hole collar angles will be between -50 and -90 degrees, and borehole depths will not exceed 350 meters.

The aim of the 900-meter NQ drill program is to test the potential for copper-gold mineralization similar to that present at the adjacent New Afton Mine owned by New Gold Inc. NGD.V (\$1.11 billion market capitalization). The New Afton Mine occupies the site of the historic Afton Open Pit Mine, which operated from 1977 to 1997. The present mine and concentrator facility commenced production in July 2012. The mine is a block caving operation. In 2021, the mine produced 52,542 oz Au and 61,700,000 lbs Cu.

The Company is currently awaiting weather conditions to improve for access purposes in order to commence drilling.

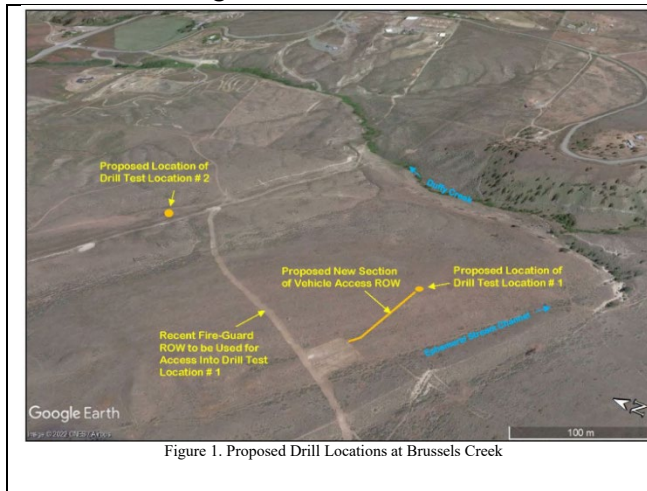


Figure 1. Proposed Drill Locations at Brussels Creek

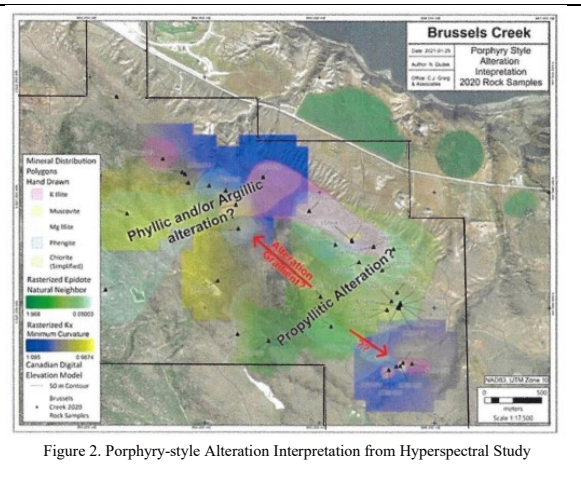


Figure 2. Porphyry-style Alteration Interpretation from Hyperspectral Study



Figure 3. Drills on site at Brussels Creek



Figure 4. Drills on site at Brussels Creek

CEO, David Greenway, summarized, "While data compilation is underway at Georgia Lake Lithium and the Company awaits additional data from Pocitos 1, we are pushing forward on all fronts with drills now on site at the Brussels Creek Copper-Palladium-Gold Project. We thank Mr. Shearer and all those involved in the consultation and drill planning process. Recharge is committed to sustainable exploration and mining practices. This is a pivotal time for the Brussels Creek Project in BC, and we look forward to the upcoming drill program."

### **Brussels Creek Project**

The BC property is an early-stage exploration property, located approximately 24 kilometres west of Kamloops, and is immediately adjacent to New Gold's New Afton Mine. The property has 17 claims (66 cells) covering 1,350.43 hectares. The geological setting of the property is very similar to New Afton, a silica-saturated copper-gold alkalic porphyry-style deposit, as well as the Highland Valley, Mount Polly, Kemess and Galore Creek deposits. Recent field observations noted the presence of a substantial mineralized quartz-feldspar porphyry body intruding the overlying Nicola group volcanics. Historic sampling and mapping on the property, in 1983 and 1984, located a broad anomalous zone (200 metres by 400 metres) with gold values up to 3.5 grams per tonne. Grab samples taken from the property in 2019 include values of 10.1 g/t Au (with 0.7 g/t palladium) and 11.5 g/t Au.

**Brussels Creek Web Page:** <https://recharge-resources.com/projects/brussels-creek/>

Recharge's management cautions that past results or discoveries on properties in proximity to Recharge may not necessarily be indicative of the presence of mineralization on the company's properties.

### **Qualified Person**

Johan T Shearer, P. Geo., Consulting Geologist, is the qualified person as defined by NI 43-101 responsible for the technical content of this release, and consents to its release.

### **Marketing Agreement**

Further, the Company has engaged TD Media LLC dba Life Water Media LLC, of Houston, Texas ("TD Media"). The services to be provided by TD Media include digital media, marketing strategies, advertising, and awareness campaigns. The engagement of TD Media will extend for a period of six months,

commencing on January 23, 2023, for a fee of US\$350,000. Neither TD Media nor any of its principals currently own any interest, directly or indirectly, in the Company.

### **About Recharge Resources**

Recharge Resources is a Canadian mineral exploration company focused on exploring and developing the production of high-value battery metals to create green, renewable energy to meet the demands of the advancing electric vehicle and fuel cell vehicle market.

All stakeholders are encouraged to follow the company on its social media profiles on [LinkedIn](#), [Twitter](#), [Facebook](#) and [Instagram](#).

On Behalf of the Board of Directors,

“David Greenway”

David Greenway, CEO.

### **For further information, please contact:**

Recharge Resources Ltd.  
Joel Warawa  
Phone: 778-588-5473  
E-Mail: [info@recharge-resources.com](mailto:info@recharge-resources.com)  
Website: [recharge-resources.com](http://recharge-resources.com)

Neither the Canadian Securities Exchange nor its Regulation Services Provider (as that term is defined in the policies of the CSE) accepts responsibility for the adequacy or accuracy of this release.