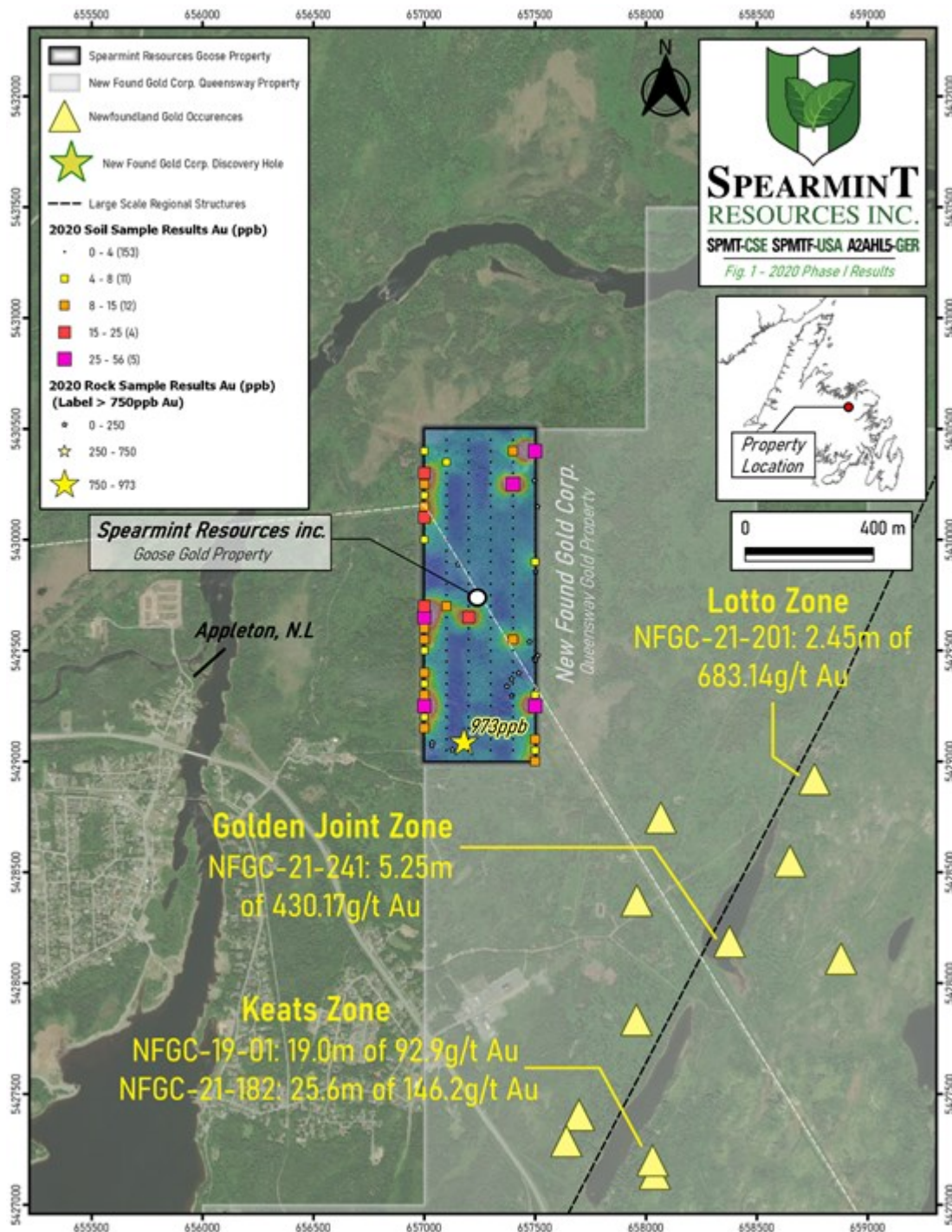


# **Spearmint Engages Planet X Exploration for Maiden Drill Program on the 'Goose Gold Project' in Newfoundland Directly Bordering New Found Gold Corp.**

Vancouver, British Columbia--(Newsfile Corp. - June 22, 2022) - **Spearmint Resources Inc. (CSE: SPMT) (OTC Pink: SPMTF) (FSE: A2AHL5) (the "Company" or "Spearmint")** is pleased to announce that the Company has engaged Planet X Exploration Services Ltd. to conduct the maiden exploration drill program on the 100-percent owned "Goose Gold Project" directly bordering New Found Gold Corp.'s Queensway project in Newfoundland (see map below). During the phase II work program, a ground magnetic survey allowed the identification of a major NE-trending magnetic lineament (GG-M-01), a negative magnetic anomaly (GG\_M-02) delineated in the SW of the study grid, and a moderate discontinuous magnetic lineament (GG\_M-03) striking NE and parallel to GG-M-01. Several narrow, magnetic trends were also successfully mapped thanks to the high-resolution ground magnetic survey. As for the VLF-EM survey, one main relatively highly conductive axis was detected in the NW part of the study grid and four moderate conductive axes in the southern part of the Goose Gold property. All the delineated VLF-EM axes appear oriented NE-SW and some of the anomalous Au assay obtained from soil and rock samples appear to be associated with these conductive axes or located in their path. Management cautions that past results or discoveries on properties in proximity to Spearmint may not necessarily be indicative to the presence of mineralization on the Company's properties.

James Nelson, President of Spearmint Resources, stated, "We are very pleased to have engaged Planet X Exploration to conduct the maiden drill program on our 'Goose Gold Project' directly bordering New Found Gold Corp.'s Queensway project. Planet X has extensive knowledge in and around the projects boundaries which we feel is invaluable. Previous work programs led to the discovery of a major NE-trending magnetic lineament and aided in determining the highest priority drill targets on this project and we are the closest property to their Keats Zone discovery. This drill program is funded with flow through funds on hand and there is no need to raise additional funds. Spearmint also recently announced a major upgrade to our resource estimate in Nevada on our McGee Lithium Clay Deposit, having more than doubled the previous amount of lithium carbonate equivalent (LCE) to 1,369,000 indicated tonnes and 723,000 inferred tonnes of LCE for a total of 2,092,000 tonnes of LCE. We look forward to building upon an already active and successful year."



Goose Gold Property Map

To view an enhanced version of this graphic, please visit:

[https://orders.newsfilecorp.com/files/4360/128557\\_39de8bda4466bbfe\\_002full.jpg](https://orders.newsfilecorp.com/files/4360/128557_39de8bda4466bbfe_002full.jpg)

### Qualified Person

Mr. Frank Bain, P.Geo., a Qualified Person as defined by National Instrument 43-101 has reviewed and approved the scientific and technical disclosure contained within this news release.

### About Spearmint Resources

Spearmint's primary projects include three lithium projects in Clayton Valley, Nevada; the 'McGee Lithium Clay Deposit' which has a resource estimate of 1,369,000 indicated tonnes and 723,000 inferred tonnes of lithium carbonate equivalent (LCE) for a total of 2,092,000 tonnes of LCE., directly bordering Pure Energy Minerals & Cypress Development Corp.; the 'Elon Lithium Brine Project' which has access to some of the deepest parts of the only lithium brine basin in production in North America;

and the recently acquired 'Green Clay Lithium Project' comprised of 97 contiguous claims totaling approximately 2,000 acres.

Spearmint's other primary projects include the 'Goose' Gold project directly bordering New Found Gold Corp. where Spearmint has sampled up to 973 ppb gold, and the Perron-East Gold Project consisting of 5 mineral claim blocks covering 11,608 acres located in the Abitibi greenstone belt of northwestern Quebec in the direct vicinity of Amex Exploration Inc.'s Perron property and past-producing Normetal mine. For a complete list of Spearmint's projects, please visit [spearmintresources.ca](http://spearmintresources.ca). Management cautions that past results or discoveries on properties in proximity to Spearmint may not necessarily be indicative to the presence of mineralization on the Company's properties.

If you would like to be added to Spearmint's news distribution list, please send your email address to [info@spearmintresources.ca](mailto:info@spearmintresources.ca)

Contact Information

Tel: 1604646-6903

[www.spearmintresources.ca](http://www.spearmintresources.ca)

"James Nelson"

President

Spearmint Resources Inc.

*The CSE has not reviewed and does not accept responsibility for the adequacy or accuracy of the content of this release.*

To view the source version of this press release, please visit <https://www.newsfilecorp.com/release/128557>