

Spearmint Receives Permit for Goose Gold Project Bordering New Found Gold

Vancouver, British Columbia--(Newsfile Corp. - September 21, 2020) - **Spearmint Resources Inc.** (CSE: SPMT) (OTC Pink: SPMTF) (FSE: SQH) (WKN: A2AHL5) (the "Company") wishes to announce that it has received our exploration permit from the Government of Newfoundland and Labrador. Crews are now being mobilized to carry out a work program immediately on its gold project directly bordering New Found Golds' Queensway Project (see map).

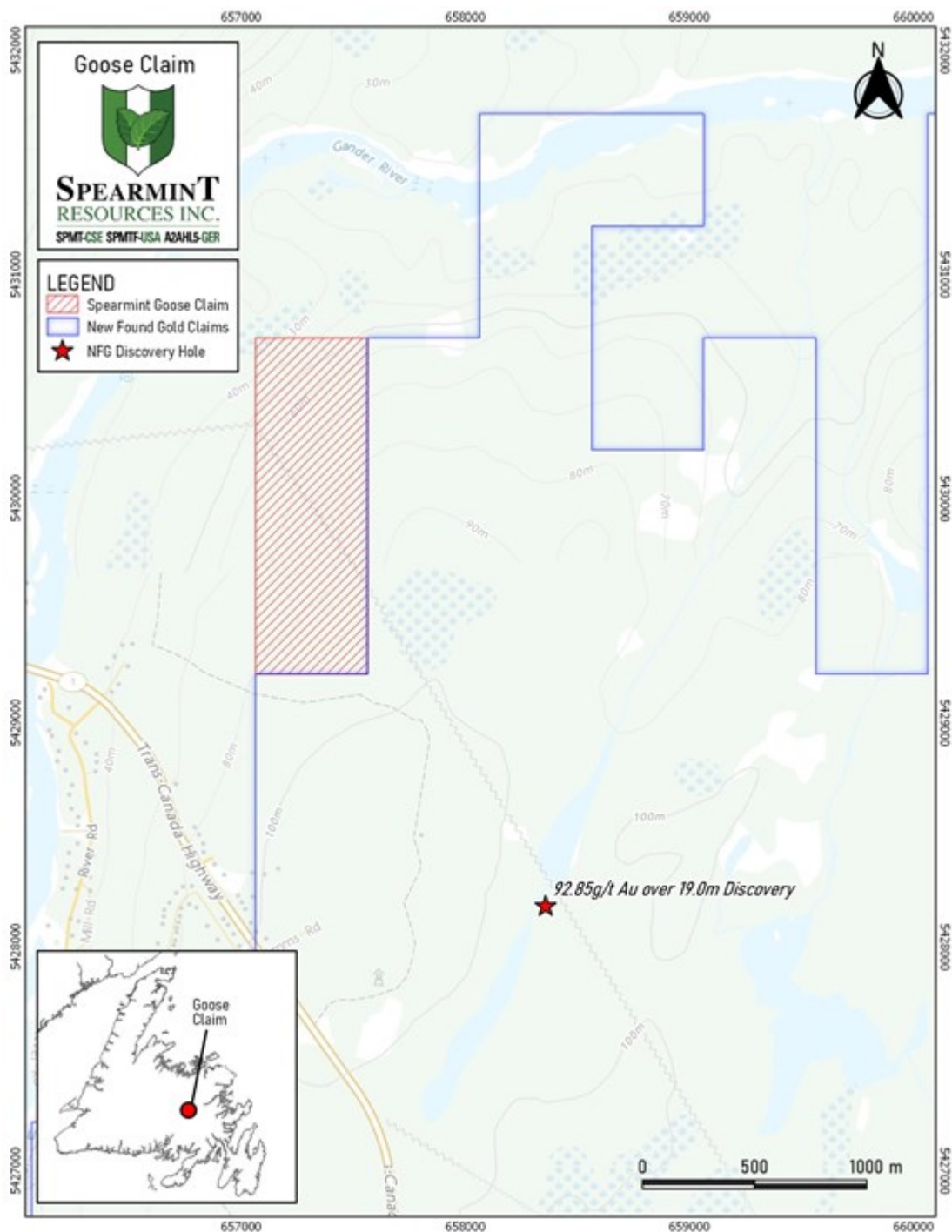


Figure 1: Goose Gold Project

To view an enhanced version of Figure 1, please visit:

https://orders.newsfilecorp.com/files/4360/64227_c51a1366d45eabdf_002full.jpg

James Nelson, President of Spearmint, stated, "We are pleased to have received our permit for this highly prospective gold project. Our neighbors New Found Gold have recently commenced a 100,000 metre drill program where they had recent drill intercepts of 92.9 g/t Au over 19.0m which was one of the best drill intercepts globally in 2020, so we are thrilled to have our work program beginning shortly. We will also actively see drills turning on our Clayton Valley Clay Project next week and are formulating plans for a work program on our Perron East gold project in the vicinity of Amex Exploration (see map)."

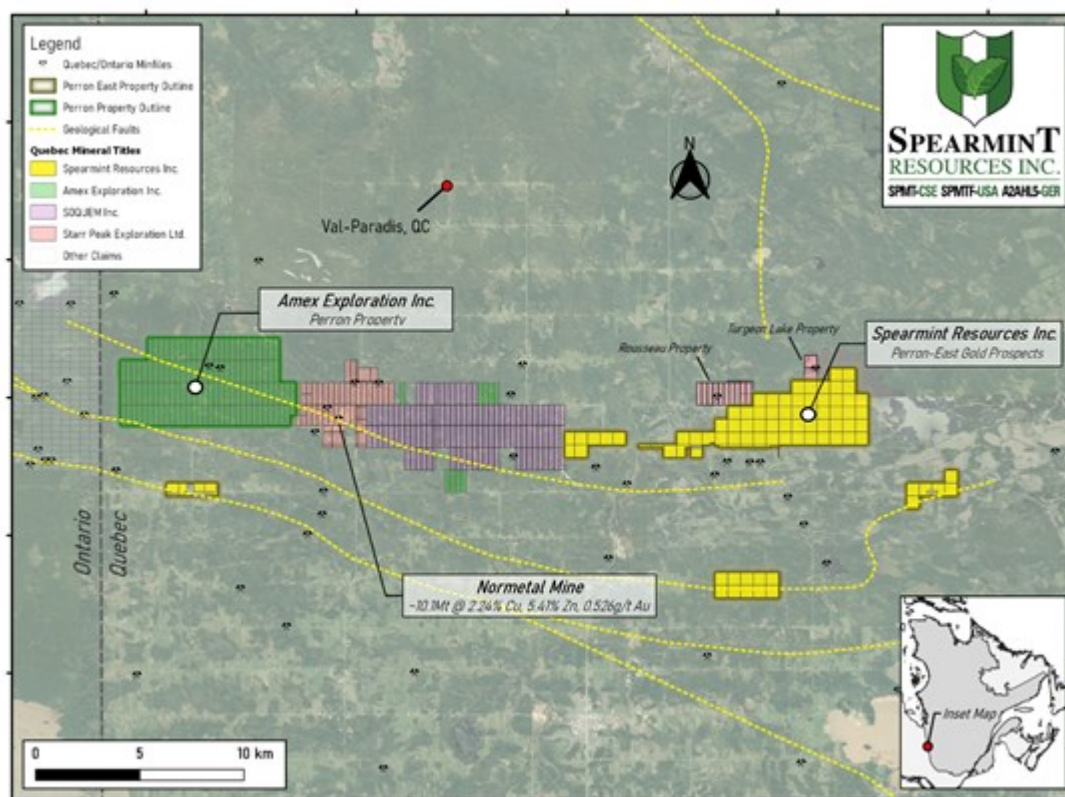


Figure 2: Perron East Gold Project

To view an enhanced version of Figure 2, please visit:

https://orders.newsfilecorp.com/files/4360/64227_c51a1366d45eabdf_003full.jpg

Management cautions that past results or discoveries on properties in proximity to Spearmint may not necessarily be indicative to the presence of mineralization on the Company's properties. Mr. Greg Thomson, P.Geo., a director of Spearmint and a Qualified Person as defined by National Instrument 43-101 has reviewed and approved the scientific and technical disclosure contained within this news release.

About Spearmint Resources

Spearmint's current projects include the 'Goose' Gold project consisting of 185 acres directly bordering New Found Gold Corp. as well as the 'Clayton Valley Lithium Prospects' in Nevada comprising of two claim blocks totaling 1,160 acres bordering Pure Energy Minerals & Cypress Development Corp. where Spearmint's drill results have intersected Lithium values as high as 1670 ppm Li; the 'Escape Lake North' PGM Project in Ontario consisting of ~4,000 contiguous acres directly bordering Clean Air Metals Inc.; the Case Lake South Cesium Project in Ontario consisting of ~7,300 acres directly bordering Power Metals Corp.'s Case Lake Cesium Property; the River Valley East Platinum-Palladium Prospect in Ontario consisting of approximately 4,700 contiguous acres directly bordering New Age Metals flagship River Valley Platinum Group Metals (PGM) project; the Carscallen West Gold Project in Ontario consisting of a ~2500 contiguous acres in the direct vicinity to Melkior Resources Inc.; the Perron-East Gold Prospects consisting of 5 mineral claim blocks covering 11,608 acres located in the Abitibi greenstone belt of northwestern Quebec in the direct vicinity of Amex Exploration Inc.'s Perron property and past-producing Normetal mine; and the 'Chibougamau Vanadium Prospect' comprising of 15,493

contiguous acres directly bordering the vanadium deposit of BlackRock Metal's (private) Ilmenite vanadium project.

Spearmint's current projects also include a portfolio of prospects in the Golden Triangle of British Columbia; the 'Golden Triangle Gold Prospects' comprising of five separate claims blocks totaling 8,265 acres bordering GT Gold Corp, the 6,805 acre 'NEBA' Gold-Copper Prospects bordering Aben Resources Ltd, and the 'EL North' Nickel-Copper Prospect is a contiguous land package of 1,053 acres in the Eskay Creek Camp bordering Garibaldi Resources Corp, as well as the recent acquisition of the 4,980 acre 'Prickle' property bordering Brixton Metals Corp.

Spearmint's other projects in British Columbia include the 'Safari' Copper-Gold Prospect consisting of 9,007 contiguous acres located in the northern Quesnel Trough in North-Central BC, and the 'Hammernose' Gold Prospect consisting of 8,685 acres directly bordering Westhaven Gold Corp.'s Shovelnose Property in the Spences Bridge Gold Belt located in Southern British Columbia, Canada.

If you would like to be added to Spearmint's news distribution list, please send your email address to info@spearmintresources.ca.

Contact Information

Tel: 1604646-6903

www.spearmintresources.ca

"James Nelson"

President

Spearmint Resources Inc.

The CSE has not reviewed and does not accept responsibility for the adequacy or accuracy of the content of this release.

To view the source version of this press release, please visit

<https://www.newsfilecorp.com/release/64227>