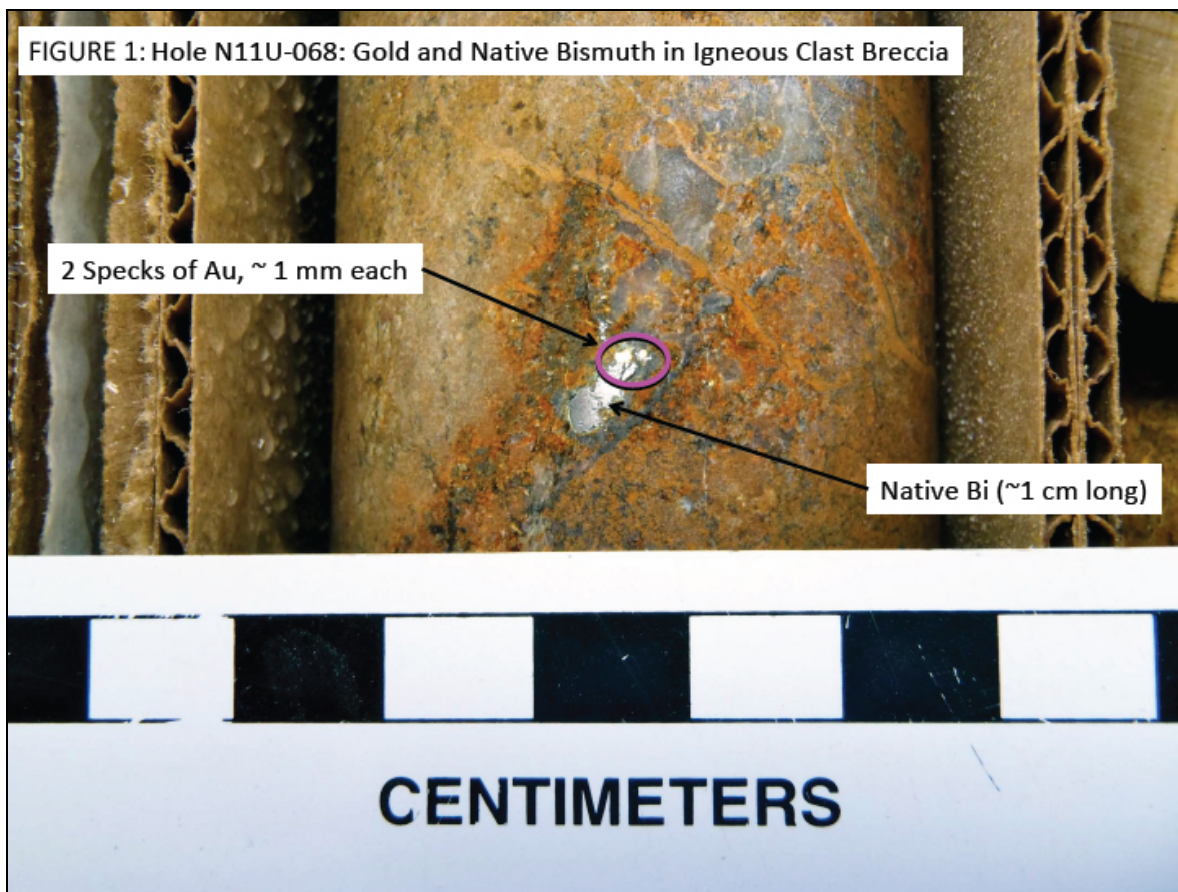


**Fire River Gold Announces Additional Drill Results
At Nixon Fork Gold Mine, Alaska**

July 7, 2011 Vancouver, Canada - Fire River Gold Corp (TSXV: FAU) (OTCQX: FVGCF) (FSE: FWR) ("FAU" or the "Company") is pleased to announce additional high-grade results obtained from holes drilled during its 2011, 28,000 metre drill program at the Nixon Fork Gold Mine, situated in Alaska's Tintina Gold Belt. The Company has received and confirmed assay results from the drill holes N11U-055 to N11U-094 from the 3000, 3200 and 3300 Zones. Diamond drill hole N11U-94 demonstrates new high grade zones of mineralization outside of the previously modelled area. This series of drill holes were extremely productive in expanding the extent of the gold mineralization of the 3300 zone. Of particular note is hole number N11U-068 that exhibited visible gold associated with native bismuth (See Figure 1). This demonstrates a known geochemical association of gold and bismuth in this deposit.



A complete listing of the drill hole intercepts are provided in Table 1.

Table 1: N11U-057 to N11U-94

Hole Number	Zone	FROM (m)	TO (m)	Width (m)	Au (g/t)	Au (opt)	Ag (g/t)	Ag (opt)	Cu (%)
N11U-057	3200	49.68	52.77	3.09	2.54	0.074	5.00	0.146	0.08
N11U-061	3200	39.32	47.42	8.10	13.33	0.389	12.23	0.357	0.66
	<i>Including</i>	40.84	43.92	3.08	23.57	0.687	15.36	0.448	0.89
	<i>Including</i>	45.72	47.42	1.70	17.15	0.500	24.00	0.700	1.27
N11U-063	3200	54.41	55.93	1.52	2.21	0.065	1.00	0.029	0.01
N11U-065	3200	50.31	51.72	1.41	1.51	0.044	10.44	0.305	0.41
	<i>Including</i>	52.73	55.17	2.44	1.99	0.058	61.75	1.801	2.92
	<i>Including</i>	55.07	55.17	0.10	5.20	0.152	14.00	0.408	0.64
N11U-066	3300-235	1.47	6.90	5.43	25.56	0.746	5.63	0.164	0.26
	<i>Including</i>	3.88	4.23	0.35	34.70	1.012	22.00	0.642	1.88
	<i>Including</i>	5.49	6.90	1.41	86.16	2.513	8.94	0.261	0.35
N11U-068	3300-235	0.91	8.59	7.68	5.50	0.160	3.81	0.111	0.17
	<i>Including</i>	7.01	8.59	1.58	16.84	0.491	7.57	0.221	0.52
	<i>Including</i>	10.06	14.25	4.19	3.73	0.109	1.74	0.051	0.07
	<i>Including</i>	10.06	11.58	1.52	7.19	0.209	2.00	0.058	0.14
	<i>Including</i>	13.85	14.25	0.40	8.77	0.256	5.00	0.146	0.04
N11U-072	3300-240	7.98	9.45	1.47	3.59	0.105	2.00	0.058	0.09
N11U-073	3200	42.37	45.10	2.73	23.18	0.676	6.91	0.202	0.32
	<i>Including</i>	44.09	45.10	1.01	41.20	1.202	10.00	0.292	0.60
	<i>Including</i>	52.12	54.64	2.52	5.87	0.171	32.58	0.950	0.90
	<i>Including</i>	53.25	54.64	1.39	9.74	0.284	55.00	1.604	1.52
N11U-075	3000Z	22.77	23.17	0.40	2.40	0.070	70.00	2.042	4.35
N11U-076	3300-240	18.95	19.40	0.45	181.50	5.294	57.00	1.662	3.30
N11U-077	3000Z	18.70	23.25	4.55	2.03	0.059	17.55	0.512	0.53
N11U-078	3300-240	7.30	8.84	1.54	1.38	0.040	1.00	0.029	0.04
N11U-079	3000Z	18.27	19.98	1.71	2.52	0.073	127.28	3.712	2.32
	<i>Including</i>	18.27	18.62	0.35	5.84	0.170	405.00	11.812	4.04
N11U-081	3000Z	19.09	21.04	1.95	2.26	0.066	46.90	1.368	1.34
N11U-082	3300-240	8.74	10.36	1.62	126.35	3.685	63.33	1.847	5.15
	<i>Including</i>	8.74	9.76	1.02	196.50	5.731	100.00	2.917	8.10
N11U-083	3000Z	25.11	29.79	4.68	7.67	0.224	42.22	1.231	1.37
	<i>Including</i>	25.11	25.72	0.61	12.50	0.364	13.00	0.379	0.68
	<i>Including</i>	26.97	28.49	1.52	13.36	0.389	41.00	1.196	1.38
N11U-084	3300-240	9.48	12.28	2.80	40.93	1.194	7.78	0.227	0.29
	<i>Including</i>	10.15	10.45	0.30	317.00	9.246	46.00	1.342	1.98
	<i>Including</i>	31.75	32.26	0.51	16.55	0.482	18.00	0.525	1.14
N11U-086	3300-240	20.29	21.54	1.25	15.80	0.000	14.00	0.408	0.65
N11U-088	3300-240	16.74	18.16	1.42	9.36	0.273	2.80	0.082	0.37
	<i>Including</i>	16.74	17.59	0.85	14.40	0.420	4.00	0.117	0.60
N11U-089	3000Z	19.78	27.10	7.32	3.66	0.107	62.36	1.819	1.86
	<i>Including</i>	22.74	25.70	2.96	6.42	0.187	90.78	2.648	2.79
N11U-090	3300-240	17.93	22.29	4.36	14.69	0.428	14.72	0.429	0.72
	<i>Including</i>	19.20	21.17	1.97	22.08	0.644	16.85	0.491	0.70
N11U-092	3300-240	17.68	20.56	2.88	17.96	0.524	7.19	0.210	0.27
	<i>Including</i>	19.20	20.56	1.36	35.60	1.038	13.00	0.379	0.49
	<i>Including</i>	24.28	28.64	4.36	57.01	1.663	32.44	0.946	2.21
	<i>Including</i>	24.28	25.24	0.96	55.20	1.610	77.00	2.246	5.68
	<i>Including</i>	27.52	28.64	1.12	174.50	5.090	55.00	1.604	3.70
	<i>Including</i>	29.87	32.92	3.05	3.31	0.097	1.00	0.029	0.12
N11U-093	3000Z	15.24	15.74	0.50	3.22	0.094	208.00	6.067	0.43
	<i>Including</i>	17.06	18.24	1.18	1.80	0.052	23.36	0.681	0.04
	<i>Including</i>	17.06	17.40	0.34	3.62	0.106	44.00	1.283	0.07
N11U-094	3300-240	26.46	34.59	8.13	93.52	2.728	2.72	0.079	0.05
	<i>Including</i>	26.46	28.35	1.89	190.23	5.548	2.44	0.071	0.03
	<i>Including</i>	32.67	34.59	1.92	31.76	0.926	1.88	0.055	0.02
N11U-095	3000Z	0.00	2.63	2.63	2.12	0.062	4.46	0.130	0.09
	<i>Including</i>	0.00	1.55	1.55	2.61	0.076	2.00	0.058	0.02

Table 2: List of No Significant Intersections and Not Sampled Drill Holes

N11U-055	3200	NSI
N11U-056	3300-235	NSI
N11U-058	3300-235	NSI
N11U-059	3200	Not Sampled
N11U-060	3300-235	NSI
N11U-062	3300-235	NSI
N11U-064	3300-235	NSI
N11U-067	3200	Not Sampled
N11U-069	3200	NSI
N11U-070	3300-235	NSI
N11U-071	3200	Not Sampled
N11U-074	3300-240	NSI
N11U-080	3300-240	NSI
N11U-085	3000Z	NSI
N11U-087	3000Z	Not Sampled
N11U-091	3000Z	NSI

Most of the holes released to-date have been for the purpose of ore definition in known blocks of mineralization. The 3000Z and 3200 zone holes are more exploratory, seeking additional mineralization in the upper Crystal mine beyond the mining zones of the six month operating plan.

On behalf of the Board of Directors, I look forward to keeping you updated with our corporate developments.



Richard Goodwin
President & C.O.O.

Further Information: Tel: +1 604 685 1870 Fax: +1 604 685 8045
Email: info@firerivergold.com or visit www.firerivergold.com
2303 West 41st Avenue, Vancouver, B.C., Canada, V6M 2A3

Certain information regarding the Company including management's assessment of future plans and operations, may constitute forward-looking statements under applicable securities laws and necessarily involve risks associated with mining exploration and development, volatility of prices, currency fluctuations, imprecision of resource estimates, environmental and permitting risks, access to labour and services, competition from other companies and ability to access sufficient capital. As a consequence, actual results may differ materially from those anticipated in the forward-looking statements. A feasibility study has not been completed and there is no certainty the disclosed targets will be reached nor that the proposed operations will be economically viable. Neither TSX Venture Exchange nor its Regulation Services Provider (as that term is defined in the policies of the TSX Venture Exchange) accepts responsibility for the adequacy or accuracy of this release. We seek safe harbour.