

Canadian Orebodies Inc.

141 Adelaide Street West, Suite 301, Toronto, Ontario, M5H 3L5

PRESS RELEASE

Canadian Orebodies Highlights Infill Drill Results on the Farley Lake Mine Project Joint Venture with Carlisle Goldfields

April 15, 2014 - Toronto, Ontario – Canadian Orebodies Inc. (TSXV:CO) (“Orebodies” or the “Company”) is pleased to highlight interim results from an additional 6 holes on the Farley Lake Mine Project, which the company has a 10% interest in through a joint venture with Carlisle Goldfields Limited (TSX: CGJ) (“Carlisle”), who is the operator of the project. Drill hole FL13-16 intersected 20.3g/t gold (“Au”) over 6.8m between 180.0m to 186.8m. Hole FL13-15 intersected 5.2g/t gold over 19.0m from the Farley Deeps. Drilling at Farley Lake commenced in December 2013 (see Press Release dated December 12, 2013).

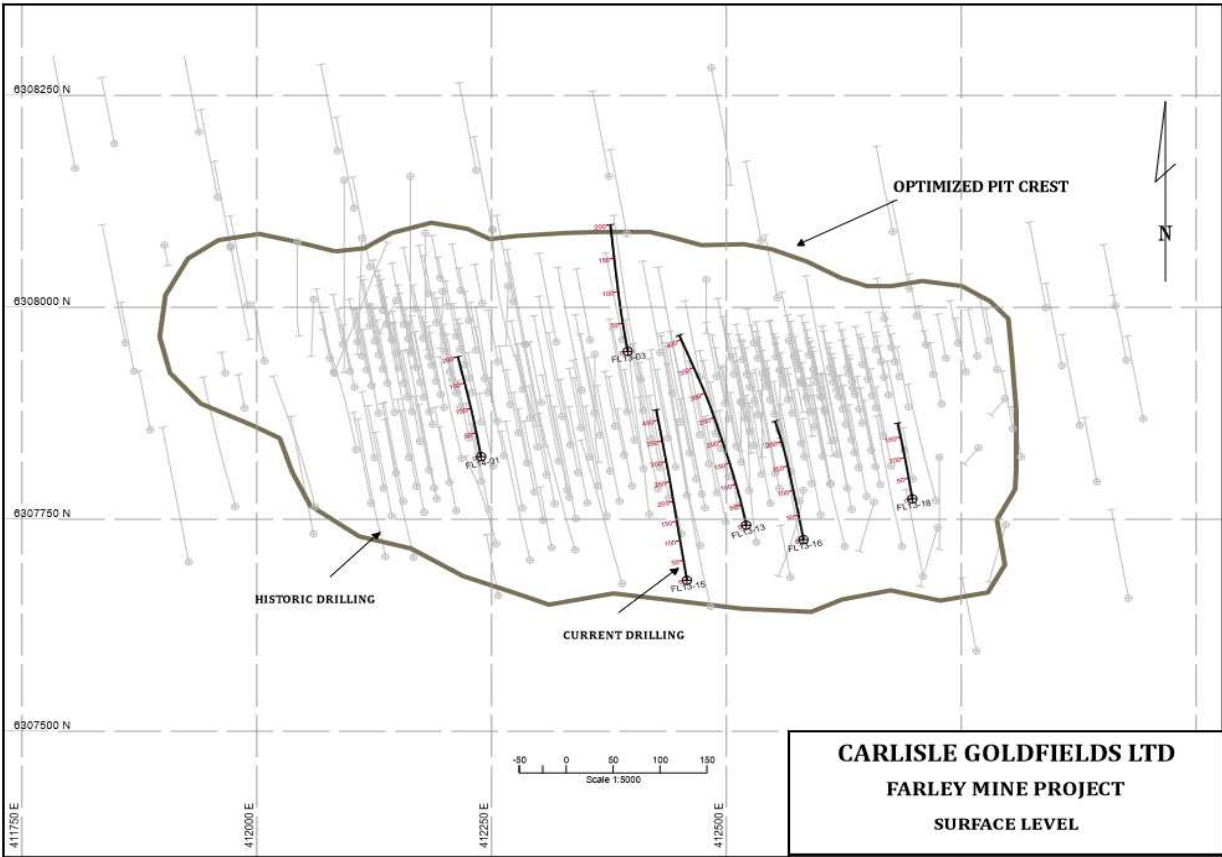
Carlisle’s President and CEO, Abraham Drost commented that: “The additional 6 holes from the infill drill program continue to show the Farley Lake Mine Project’s considerable grade potential within Inferred material in the optimized pit-shell while demonstrating a deep value proposition at depth below the optimized pit shell in the Farley Deeps horizon, which provides considerable exploration upside.”

Hole	From (m)	To (m)	Drill Interval (m)	Au Grade g/t
FL13-03	No Significant Results			
FL13-13	143.0	163.0	20.0	2.4
	182.8	184	1.20	2.2
	192.5	199	6.5	3.2
	242.6	247	4.4	1.4
	367.	371.0	4.0	2.2
FL13-15	364.0	383.0	19.0	5.2
FL13-16	180.0	186.8	6.8	20.3
FL13-18	97.2	99	1.8	10.3
	141.5	151.0	9.5	2.0
FL14-01	25.0	31.0	6.0	3.3

Hole	From (m)	To (m)	Drill Interval (m)	Au Grade g/t
	58.0	71.0	13.0	6.1
	113.0	116.0	3.0	6.7
	148.5	150.5	2.0	4.3

NB. Drill Results highlighted and sub results use an arbitrary cut-off grade of 0.60 g/t Au. True width calculations indicate that core length is in excess of 90% of core length.

Diagram 1: Drill Hole Locations



QA/QC

Carlisle’s exploration programs are carried out under the supervision of Peter Karelse P.Geo., Vice-President of Exploration, a Qualified Person as defined by NI 43-101, who reviewed and approved the technical content of this press release.

Samples were transported directly in secure containers from the Carlisle Goldfields site in Lynn Lake, Manitoba, to the TSL Laboratories in Saskatoon, Saskatchewan. TSL, which is an accredited ISO/IEC 17025 lab, assayed the samples using standard fire assay methods with a gravimetric finish. Certified standards are placed in the sample stream at a rate of one standard per 20 samples. Certified blanks are placed in the sample stream at a rate of one blank every 40

samples. One lab reject duplicate per 30 samples is submitted to an umpire lab for assay verification. Results are analyzed for acceptance at the time of import. All standards associated with the results in this press release were determined to be acceptable within the defined limits of the standard used.

About Canadian Orebodies Inc.

Canadian Orebodies is a Canadian-based mineral exploration company with a portfolio of properties in Nunavut, Ontario and Manitoba. Canadian Orebodies trades on the TSXV under the symbol "CO". For more information please visit www.canadianorebodies.com or contact:

Gordon McKinnon, President & CEO
Canadian Orebodies Inc.
(416) 644-1747