

*No securities regulatory authority has expressed an opinion about these securities and it is an offense to claim otherwise. This short form base shelf prospectus constitutes a public offering of these securities on in those jurisdictions where they may be lawfully offered for sale and therein only by persons permitted to sell such securities. See “Plan of Distribution”.*

*This short form base shelf prospectus has been filed under legislation in each of the provinces and territories of Canada that permits certain information about these securities to be determined after this short form base shelf prospectus has become final and that permits the omission from this short form base shelf prospectus of that information. The legislation requires the delivery to purchasers of a prospectus supplement containing the omitted information within a specified period of time after agreeing to purchase any of these securities.*

*Information has been incorporated by reference in this prospectus from documents filed with securities commissions or similar authorities in Canada. Copies of the documents incorporated herein by reference may be obtained on request without charge from the secretary of Jushi Holdings Inc. at 301 Yamato Road, Suite 3250 Boca Raton, Florida, USA 33431, telephone: (561)-617-9100, and are also available electronically at [www.sedar.com](http://www.sedar.com).*

## SHORT FORM BASE SHELF PROSPECTUS

New Issue and/or Secondary Offering

December 2, 2021

# Jushi

**JUSHI HOLDINGS INC.**

**C\$500,000,000**

**Subordinate Voting Shares**

**Warrants**

**Subscription Receipts**

**Debt Securities**

**Convertible Securities**

**Units**

Jushi Holdings Inc. (the “**Company**”, “**Jushi**”, “**us**”, “**we**” or “**our**”) may offer, issue and sell, as applicable, from time to time: (i) subordinate voting shares (“**Subordinate Voting Shares**”); (ii) warrants (“**Warrants**”) to acquire any of the other securities that are described in this short form base shelf prospectus (the “**Prospectus**”); (iii) subscription receipts (“**Subscription Receipts**”) convertible into other Securities (as defined below); (iv) debt securities (“**Debt Securities**”), which may consist of bonds, debentures, notes or other evidences of indebtedness of any kind, nature or description and which may be issuable in series; (v) securities convertible into or exchangeable for Subordinate Voting Shares and/or other Securities (“**Convertible Securities**”); (vi) units (“**Units**”) comprised of one or more of any of the other Securities that are described in this Prospectus, or any combination of such Securities (all of the foregoing collectively, the “**Securities**” and individually, a “**Security**”), for up to an aggregate offering price of C\$500 million (or its equivalent in any other currencies), in one or more transactions during the 25-month period that this Prospectus, including any amendments hereto, remains effective.

We will provide the specific terms of any offering of Securities, including the specific terms of the Securities with respect to a particular offering and the terms of such offering, in one or more prospectus supplements (each a “**Prospectus**”

**Supplement**”). The Securities may be offered separately or together or in any combination, and as separate series. One or more securityholders of the Company may also offer and sell Securities under this Prospectus. See “*Secondary Sales*”.

In addition, the Securities may be offered and issued in consideration for the acquisition of other businesses, assets or securities by the Company or one of its subsidiaries. The consideration for any such acquisition may consist of the Securities separately, a combination of Securities or any combination of, among other things, Securities, cash and assumption of liabilities.

Prospective investors should be aware that the purchase of any Securities may have tax consequences that may not be fully described in this Prospectus or in any Prospectus Supplement, and should carefully review the tax discussion, if any, in the applicable Prospectus Supplement and in any event consult with a tax adviser.

All information permitted under applicable securities laws to be omitted from this Prospectus will be contained in one or more Prospectus Supplements that will be delivered to purchasers together with this Prospectus except in cases where an exemption from such delivery has been obtained. For the purposes of applicable securities laws, each Prospectus Supplement will be incorporated by reference into this Prospectus as of the date of the Prospectus Supplement and only for the purposes of the distribution of the Securities to which that Prospectus Supplement pertains. You should read this Prospectus and any applicable Prospectus Supplement carefully before you invest in any Securities offered pursuant to this Prospectus.

Our Securities may be offered and sold pursuant to this Prospectus through underwriters, dealers, directly or through agents designated from time to time at amounts and prices and other terms determined by us or any selling securityholders. In connection with any underwritten offering of Securities, the underwriters may over-allot or effect transactions which stabilize or maintain the market price of the Securities offered at levels other than those that might otherwise prevail on the open market. Such transactions, if commenced, may be discontinued at any time. See “*Plan of Distribution*”. A Prospectus Supplement will set out the names of any underwriters, dealers, agents or selling securityholders involved in the sale of our Securities, the amounts, if any, to be purchased by underwriters, the plan of distribution for such Securities, including the net proceeds we expect to receive from the sale of such Securities, if any, the amounts and prices at which such Securities are sold, the compensation of such underwriters, dealers or agents and other material terms of the plan of distribution.

The Securities may be sold from time to time in one or more transactions at a fixed price or prices or at non-fixed prices. If offered on a non-fixed price basis, the Securities may be offered at market prices prevailing at the time of sale, at prices determined by reference to the prevailing price of a specified security in a specified market or at prices to be negotiated with purchasers, in which case the compensation payable to an underwriter, dealer or agent in connection with any such sale will be decreased by the amount, if any, by which the aggregate price paid for Securities by the purchasers is less than the gross proceeds paid by the underwriter, dealer or agent to the Company or any selling securityholder. The price at which the Securities will be offered and sold may vary from purchaser to purchaser and during the period of distribution. This Prospectus may qualify an “at-the-market distribution” (as defined under applicable Canadian securities legislation).

In connection with any offering of Securities, other than an “at-the-market distribution” (as defined under applicable Canadian securities legislation), unless otherwise specified in a Prospectus Supplement, the underwriters, dealers or agents, as the case may be, may over-allot or effect transactions which stabilize, maintain or otherwise affect the market price of the Securities at a level other than those which otherwise might prevail on the open market. Such transactions may be commenced, interrupted or discontinued at any time. A purchaser who acquires Securities forming part of the underwriters’, dealers’ or agents’ over-allocation position acquires those Securities under this Prospectus and the Prospectus Supplement relating to the particular offering of Securities, regardless of whether the over-allocation position is ultimately filled through the exercise of the over-allotment option or secondary market purchases. See “*Plan of Distribution*”. No underwriter, dealer

or agent involved in an “at-the-market distribution” under this Prospectus, no affiliate of such an underwriter, dealer or agent and no person or company acting jointly or in concert with such underwriter, dealer or agent will over-allot Securities in connection with such distribution or effect any other transactions that are intended to stabilize or maintain the market price of the Securities.

The issued and outstanding Subordinate Voting Shares are listed on the Canadian Securities Exchange (the “CSE”) under the symbol “JUSH” and on the OTCQX Best Market under the trading symbol “JUSHF”. On December 1, 2021 the last trading day prior to the date of this Prospectus, the closing price of the Subordinate Voting Shares on the CSE was C\$4.89 and the closing price of the Subordinate Voting Shares on the OTCQX Best Market was \$3.81. The Company also has a class of issued and outstanding 10% Senior Secured Notes due January 15, 2023 (the “**10% Senior Secured Notes**”) that are listed on the CSE under the symbol “JUSH.DB.U”. Unless otherwise specified in the applicable Prospectus Supplement, each series or issue of Securities (other than Subordinate Voting Shares) will not be listed on any securities exchange. Accordingly, there is currently no market through which the Securities (other than Subordinate Voting Shares) may be sold, and purchasers may not be able to resell any such Securities purchased under this Prospectus and the Prospectus Supplement relating to such Securities. This may affect the pricing of such Securities in the secondary market, the transparency and availability of trading prices, the liquidity of such Securities and the extent of issuer regulation.

As of August 9, 2021, the Company announced that all issued and outstanding super voting shares of Jushi (“Super Voting Shares”) and multiple voting shares of Jushi (“Multiple Voting Shares”) were converted into subordinate voting shares of Jushi (“Subordinate Voting Shares”) in accordance with the terms of the Super Voting Shares and Multiple Voting Shares. The outstanding warrants to acquire Super Voting Shares and Multiple Voting Shares were also converted into warrants to acquire Subordinate Voting Shares, without any amendment to the other terms of such warrants. The conversions of Super Voting Shares and Multiple Voting Shares in Subordinate Voting Shares as well the associated warrant conversions (collectively, the “Conversions”) were made as a result of consent notices received by Jushi from the requisite holders of the Super Voting Shares and the Multiple Voting Shares. Following the Conversions, there are no Jushi Super Voting Shares or Multiple Voting Shares issued and outstanding. The Company now has one class of issued and outstanding shares: the Subordinate Voting Shares. Each Subordinate Voting Share is entitled to one vote per Subordinate Voting Share on all matters upon which the holders of securities are entitled to vote, as applicable, and holders of Subordinate Voting Shares will vote on all matters subject to a vote of holders of securities as one class of shares. The Subordinate Voting Shares are “restricted securities” within the meaning of such term under applicable Canadian securities laws.

The directors and certain officers of the Company reside outside of Canada and certain experts retained by the Company are organized outside of Canada. Each of these individuals and entities have appointed the following agents for service of process:

<b>Name of Director or Officer</b>	<b>Name and Address of Agent</b>
James Cacioppo, Chairman and Chief Executive Officer	152928 Canada Inc., c/o Stikeman Elliott LLP, 5300 Commerce Court West, 199 Bay Street, Toronto, ON, Canada M5L 1B9
Louis J. Barack, President and Secretary	152928 Canada Inc., c/o Stikeman Elliott LLP, 5300 Commerce Court West, 199 Bay Street, Toronto, ON, Canada M5L 1B9
Edward Kremer, Chief Financial Officer	152928 Canada Inc., c/o Stikeman Elliott LLP, 5300 Commerce Court West, 199 Bay Street, Toronto, ON, Canada M5L 1B9
Leonardo Garcia-Berg, Chief Operating Officer	152928 Canada Inc., c/o Stikeman Elliott LLP, 5300 Commerce Court West, 199 Bay Street, Toronto, ON, Canada M5L 1B9
Benjamin Cross, Director	152928 Canada Inc., c/o Stikeman Elliott LLP, 5300 Commerce Court West, 199 Bay Street, Toronto, ON, Canada M5L 1B9
Stephen Monroe, Director	152928 Canada Inc., c/o Stikeman Elliott LLP, 5300 Commerce Court West, 199 Bay Street, Toronto, ON, Canada M5L 1B9
Peter Adderton, Director	152928 Canada Inc., c/o Stikeman Elliott LLP, 5300 Commerce Court West, 199 Bay Street, Toronto, ON, Canada M5L 1B9
Marina Hahn, Director	152928 Canada Inc., c/o Stikeman Elliott LLP, 5300 Commerce Court West, 199 Bay Street, Toronto, ON, Canada M5L 1B9
<b>Name of Expert</b>	<b>Name and Address of Agent</b>
Duane Morris LLP	152928 Canada Inc., c/o Stikeman Elliott LLP, 5300 Commerce Court West, 199 Bay Street, Toronto, ON, Canada M5L 1B9
Marcum LLP	Fasken Martineau DuMoulin LLP, 333 Bay Street, Suite 2400, Bay Adelaide Centre, Box 20, Toronto, ON, Canada M5H 2T6

The Company's officers and directors, namely James Cacioppo, Edward Kremer, Louis J. Barack, Leonardo Garcia-Berg, Benjamin Cross, Stephen Monroe, Peter Adderton and Marina Hahn reside outside of Canada. Purchasers are advised that it may not be possible for investors to enforce judgments obtained in Canada against any person or company that resides outside of Canada, even if the party has appointed an agent for service of process.

An investment in the Securities is speculative and involves significant risks. Readers should carefully review and evaluate the risk factors contained in this Prospectus, the applicable Prospectus Supplement and in the documents incorporated by reference herein before purchasing any Securities. See "*Cautionary Note Regarding Forward-Looking Statements*" and "*Risk Factors*".

**The Company is not making an offer of the Securities in any jurisdiction where such offer is not permitted.**

Unless otherwise specified in a Prospectus Supplement relating to any Securities offered, certain legal matters in connection with the offering of Securities will be passed upon on behalf of the Company by Stikeman Elliott LLP as to matters relating to Canadian law and by Duane Morris LLP as to matters relating to United States law.

**No underwriter has been involved in the preparation of this Prospectus nor has any underwriter performed any review of the contents of this Prospectus.**

Our head office is located at 301 Yamato Road, Suite 3250 Boca Raton, Florida, USA 33431, and our registered address is Suite 1700, Park Place, 666 Burrard Street, Vancouver, British Columbia V6C 2X8.

**The Company derives a substantial portion of its revenues from the cannabis industry in certain states of the United States, which industry is illegal under United States federal law and enforcement of relevant laws is a significant risk. The Company is directly involved (through its licensed subsidiaries) in the cannabis industry in the United States where local state laws permit such activities. Currently, its subsidiaries and managed entities are directly or indirectly engaged in the manufacture, possession, use, sale, distribution or branding of cannabis and/or hold licenses in the adult use and/or medicinal cannabis marketplace in the states of Nevada, Illinois, Pennsylvania, Ohio, Virginia and California and have filed applications for licenses to engage in the manufacture, possession, use, sale, distribution or branding of cannabis in the adult use and/or medicinal cannabis marketplace in the states of California, Illinois and New Jersey. Currently, its subsidiaries and managed entities are directly or indirectly engaged in the manufacture, possession, use, sale, distribution or branding of hemp in the United States.**

**The United States federal government regulates drugs through the Controlled Substances Act (21 U.S.C. § 811) (the “CSA”), which places controlled substances, including cannabis, in a schedule. Cannabis is classified as a Schedule I drug. Under United States federal law, a Schedule I drug or substance has a high potential for abuse, no accepted medical use in the United States, and a lack of accepted safety for the use of the drug under medical supervision. The United States Food and Drug Administration (“FDA”) has not approved marijuana as a safe and effective drug for any indication.**

**In the United States, marijuana is largely regulated at the state level. State laws regulating cannabis are in direct conflict with the federal CSA, which makes cannabis use and possession federally illegal. Although certain states authorize medical and/or adult use cannabis production and distribution by licensed or registered entities, under U.S. federal law, the possession, use, cultivation, and transfer of cannabis and any related drug paraphernalia is illegal and any such acts are criminal acts under federal law. The Supremacy Clause of the United States Constitution establishes that the United States Constitution and federal laws made pursuant to it are paramount and, in case of conflict between federal and state law, the federal law shall apply.**

**On January 4, 2018, former U.S. Attorney General Jeff Sessions issued a memorandum to U.S. district attorneys which rescinded previous guidance from the U.S. Department of Justice (“DOJ”) specific to cannabis enforcement in the United States, including the Cole Memo (as defined herein). With the Cole Memo rescinded, U.S. federal prosecutors have been given discretion in determining whether to prosecute cannabis related violations of U.S. federal law, subject to budgetary constraints. On November 7, 2018, Mr. Sessions tendered his resignation as Attorney General at the request of President Donald Trump. Following Mr. Sessions’ resignation, Matthew Whitaker began serving as Acting United States Attorney General, until February 14, 2019, when William Barr was appointed as the United States Attorney General. Mr. Barr resigned as Attorney General effective December 23, 2020. President Joseph Biden nominated Merrick Garland to succeed Mr. Barr as the U.S. Attorney General. Mr. Garland was sworn in as Attorney General in March 2021. It is unclear what impact, if any, the new administration will have on U.S. federal government enforcement policy on cannabis. If the DOJ policy shifts to aggressively pursue financiers or equity owners of cannabis-related business, and United States Attorneys follow such policies through pursuing prosecutions, then the Company could face (i) seizure of its cash and other assets used to support or derived from its cannabis subsidiaries, and (ii) the arrest of its employees, directors, officers, managers and investors, who could face charges of ancillary criminal violations of the CSA for aiding and abetting and conspiring to violate the CSA by virtue of providing financial support to state-licensed or permitted cultivators, processors, distributors, and/or retailers of cannabis. Additionally, as has recently been affirmed by U.S. Customs and Border**

Protection, employees, directors, officers, managers and investors of the Company who are not U.S. citizens face the risk of being barred from entry into the United States for life.

There is no guarantee that state laws legalizing and regulating the sale and use of cannabis will not be repealed or overturned, or that local governmental authorities will not limit the applicability of state laws within their respective jurisdictions. Unless and until the United States Congress (“Congress”) amends the CSA with respect to medical and/or adult use cannabis (and as to the timing or scope of any such potential amendments there can be no assurance), there is a risk that U.S. federal authorities may enforce current U.S. federal law. If the U.S. federal government begins to enforce U.S. federal laws relating to cannabis in states where the sale and use of cannabis is currently legal, or if existing applicable state laws are repealed or curtailed the Company’s results of operations, financial condition and prospects would be materially adversely affected. See “Risk Factors – Risks Related to the Regulatory Environment – U.S. federal law and enforcement pertaining to cannabis and hemp” in the Company’s annual information form dated June 7, 2021 (the “AIF”), incorporated by reference herein, for additional information on this risk.

In light of the political and regulatory uncertainty surrounding the treatment of U.S. cannabis-related activities, including the rescission of the Cole Memo discussed above, on February 8, 2018, the Canadian Securities Administrators published Staff Notice 51-352 (Revised) – Issuers with U.S. Marijuana-Related Activities (“Staff Notice 51-352”) setting out the Canadian Securities Administrator’s disclosure expectations for specific risks facing issuers with cannabis-related activities in the United States. Staff Notice 51-352 includes additional disclosure expectations that apply to all issuers with U.S. cannabis-related activities, including those with direct and indirect involvement in the cultivation and distribution of cannabis, as well as issuers that provide goods and services to third parties involved in the U.S. cannabis industry. See “Regulatory Framework” in the Prospectus and the AIF.

The Company’s involvement in the U.S. cannabis market may subject the Company to heightened scrutiny by regulators, stock exchanges, clearing agencies and other U.S. and Canadian authorities. There can be no assurance that this heightened scrutiny will not in turn lead to the imposition of certain restrictions on the Company’s ability to operate in the U.S. or any other jurisdiction. There are a number of risks associated with the business of the Company. See, without limitation, “Risk Factors – Risks Related to the Regulatory Environment – U.S. federal law and enforcement pertaining to cannabis and hemp”, “Risk Factors – Risks Related to the Regulatory Environment – Difficulty in accessing services of banks and/or other financial institutions”, “Risk Factors – Risks Related to the Regulatory Environment – Risks related to heightened scrutiny by regulatory authorities” and “Risk Factors – Risks Related to the Company’s Business and Industry – U.S. border officials could deny entry into the U.S. to employees of, or investors in companies with, cannabis operations in the U.S.” in the AIF, incorporated by reference herein.

## TABLE OF CONTENTS

ABOUT THIS PROSPECTUS .....	9
CAUTIONARY NOTE REGARDING FORWARD-LOOKING STATEMENTS.....	9
DOCUMENTS INCORPORATED BY REFERENCE .....	11
CURRENCY PRESENTATION AND EXCHANGE RATE INFORMATION .....	13
MARKET AND INDUSTRY DATA .....	13
TRADEMARKS.....	13
WHERE YOU CAN FIND MORE INFORMATION .....	13
JUSHI HOLDINGS INC. ....	13
REGULATORY FRAMEWORK .....	26
Federal Regulatory Environment.....	31
<i>Marijuana</i> .....	31
<i>Industrial Hemp</i> .....	33
State Regulatory Environment.....	34
<i>California</i> .....	34
<i>Illinois</i> .....	37
<i>Massachusetts</i> .....	41
<i>Nevada</i> .....	47
<i>Ohio</i> .....	49
<i>Pennsylvania</i> .....	51
<i>Virginia</i> .....	53
Compliance.....	55
SECONDARY SALES .....	57
USE OF PROCEEDS .....	57
DESCRIPTION OF SECURITIES.....	58
CONSOLIDATED CAPITALIZATION.....	63
EARNINGS COVERAGE RATIOS .....	63
PLAN OF DISTRIBUTION.....	63
PRIOR SALES .....	64
TRADING PRICE AND VOLUME.....	64
DIVIDENDS .....	65
TAX CONSIDERATIONS .....	65
RISK FACTORS .....	65
INTERESTS OF EXPERTS .....	67
LEGAL MATTERS .....	67
EXEMPTIONS.....	67

AUDITORS, REGISTRAR AND TRANSFER AGENT .....	68
PURCHASERS' STATUTORY AND CONTRACTUAL RIGHTS OF WITHDRAWAL AND RESCISSION .....	68
ENFORCEMENT OF JUDGMENTS AGAINST FOREIGN PERSONS .....	69
PROMOTERS .....	69
MATERIAL CONTRACTS .....	70
CERTIFICATE OF JUSHI HOLDINGS INC. ....	72
CERTIFICATE OF THE PROMOTERS .....	73



## ABOUT THIS PROSPECTUS

Readers should rely only on the information contained or incorporated by reference in this Prospectus and any applicable Prospectus Supplement in connection with an investment in the Securities. No person or entity is authorized by the Company to provide any information or to make any representation other than as contained in this Prospectus (or incorporated by reference herein) or any Prospectus Supplement in connection with the issue and sale of the Securities offered hereunder. We take no responsibility for and can provide no assurance as to the reliability of, any other information that others may give readers of this Prospectus. We are not making an offer of Securities in any jurisdiction where the offer is not permitted.

Readers should not assume that the information contained or incorporated by reference in this Prospectus is accurate as of any date other than the date of this Prospectus or the respective dates of the documents incorporated by reference herein, unless otherwise noted herein or as required by law. It should be assumed that the information appearing in this Prospectus, any Prospectus Supplement and the documents and the information contained in any document incorporated by reference is accurate only as of the date of that document unless specified otherwise. The business, financial condition, results of operations and prospects of the Company may have changed since those dates.

This Prospectus shall not be used by anyone for any purpose other than in connection with an offering of Securities in compliance with applicable securities laws. We do not undertake to update the information contained or incorporated by reference herein, including any Prospectus Supplement, except as required by applicable securities laws. Information contained on, or otherwise accessed through, our website shall not be deemed to be a part of this Prospectus and such information is not incorporated by reference herein.

The Company currently has an effective base shelf prospectus dated October 9, 2020 (the “Current Base Shelf”) pursuant to which the Company conducted the October Offering, the January Offering and the February Offering (defined below in “Documents Incorporated by Reference”). The Company does not currently have any plans to initiate additional drawdowns under the Current Base Shelf and intends to withdraw the Current Base Shelf when this Prospectus becomes effective.

## CAUTIONARY NOTE REGARDING FORWARD-LOOKING STATEMENTS

This Prospectus and the documents incorporated by reference herein contain “forward-looking statements” and “forward-looking information” within the meaning of applicable Canadian and United States securities legislation (collectively, “**forward-looking information**”) which are based upon the Company’s current internal expectations, estimates, projections, assumptions and beliefs. Such information can be identified by the use of forward-looking terminology such as “expect”, “likely”, “may”, “will”, “should”, “intend”, or “anticipate”, “potential”, “proposed”, “estimate” and other similar words, including negative and grammatical variations thereof, or statements that certain events or conditions “may” or “will” happen, or by discussions of strategy. Forward-looking information include estimates, plans, expectations, opinions, forecasts, projections, targets, guidance, or other statements that are not statements of fact. Such forward-looking information are made as of the date of this Prospectus, or in the case of documents incorporated by reference herein, as of the date of each such document. Forward-looking information in this Prospectus, any Prospectus Supplement or the documents incorporated by reference herein and therein include, but are not limited to, statements with respect to:

- the business and future activities of, and developments related to, the Company after the date hereof, including such things as future business strategy, competitive strengths, goals, expansion and growth of the Company’s business, operations and plans, including new revenue streams;
- the completion and integration of contemplated acquisitions by the Company or other possible acquisitions or dispositions (directly or indirectly) of businesses or assets which may or may not be material and/or investment opportunities;
- the continued performance of existing operations;
- the anticipated opening of additional dispensaries, subject to licensing and other approvals;
- the expansion and optimization of the grower-processor facilities in Pennsylvania, Nevada, Ohio and Virginia;

- the opening of new dispensaries in California, Virginia, and Pennsylvania, each of which are subject to licensing and other approvals;
- the application for additional licenses and the grant of licenses that have been applied for;
- the renewal of licenses held by the Company;
- limitations on the ownership of licenses;
- the expansion or construction of certain facilities;
- expansion into additional United States, Canadian and/or international markets;
- any potential future legalization of adult use and/or medical marijuana under United States federal law;
- the regulatory regime in the states and markets in which the Company has operations or plans to acquire or develop operations;
- expectations of market size and growth in the United States and the states in which the Company operates;
- the impact of the novel coronavirus disease (“COVID-19”) on the Company’s business;
- additional funding requirements;
- the payment of dividends;
- expectations for other economic, business, regulatory and/or competitive factors related to the Company or the cannabis industry generally;
- the Company timely becoming a U.S. filer in addition to a Canadian filer; the transition of the Company’s financial reporting from IFRS to U.S. GAAP; and
- other events or conditions that may occur in the future.

Company shareholders and other readers are cautioned that the forward-looking information contained in this Prospectus and the documents incorporated herein by reference is based on the assumptions and estimates of management of the Company at the time they were provided or made and involve known and unknown risks, uncertainties and other factors which may cause the actual results, level of activity, performance or achievements of the Company, as applicable, to be materially different from any future results, performance or achievements expressed or implied by such forward-looking information. Although the Company believes that the expectations reflected in such forward-looking information are reasonable, it can give no assurance that such expectations will prove to have been correct. The Company’s forward-looking information is expressly qualified in its entirety by this cautionary statement.

A number of factors could cause actual events, performance or results to differ materially from what is projected in the forward-looking information. See “*Risk Factors*” in this Prospectus and in the AIF for further details. Although the Company has attempted to identify important factors that could cause actual results to differ materially, there may be other factors that cause results not to be as anticipated, estimated or intended. In formulating the forward-looking information contained herein, the Company has assumed, without limitation, receipt of requisite regulatory approvals on a timely basis, receipt and/or maintenance of required licenses and third-party consents in a timely manner, successful integration of the Company’s and its subsidiaries’ operations, and no unplanned materially adverse changes to its facilities, assets, customer base and the economic conditions affecting the Company’s current and proposed operations. These assumptions, although considered reasonable by the Company at the time of preparation, may prove to be incorrect. In addition, the Company has assumed that there will be no material adverse change to the current regulatory landscape affecting the cannabis and hemp industries and has also assumed that the Company will remain compliant in the future with all laws, regulations and rules imposed upon it by law.

There can be no assurance that such forward-looking information will prove to be accurate as actual results and future events could differ materially from those anticipated in such forward-looking information. Accordingly, readers should not place undue reliance on forward-looking information. Forward-looking information is provided and made as of the date of this Prospectus and the Company does not undertake any obligation to revise or update any forward-looking information or statements other than as required by applicable law.

## DOCUMENTS INCORPORATED BY REFERENCE

**Information has been incorporated by reference into this Prospectus from documents filed with securities commissions or similar authorities in Canada.** Copies of the documents incorporated herein by reference may be obtained on request without charge from the secretary of Jushi Holdings Inc. at 301 Yamato Road, Suite 3250, Boca Raton, FL 33431, telephone: (561)-617-9100, and are also available electronically at [www.sedar.com](http://www.sedar.com).

The following documents, filed by the Company with the various securities commissions or similar authorities in each of the provinces and territories of Canada, are specifically incorporated by reference into, and form an integral part of, this Prospectus:

- a) the AIF;
- b) the audited consolidated financial statements as at and for the years ended December 31, 2020 and 2019;
- c) the management's discussion and analysis for the year ended December 31, 2020, as amended and refiled on June 7, 2021;
- d) the condensed unaudited interim consolidated financial statements for the three and nine-month period ended September 30, 2021;
- e) the management's discussion and analysis for the three and nine-month period ended September 30, 2021;
- f) the material change report dated October 23, 2020 regarding the closing on October 23, 2020 of an underwritten overnight marketed offering of 11,500,000 Subordinate Voting Shares (including the exercise of the applicable over-allotment option) at a price of C\$3.55 per Subordinate Voting Share by the Company (the "**October Offering**");
- g) the material change report dated January 8, 2021 regarding the closing on January 7, 2021 of an underwritten overnight marketed offering of 6,210,000 Subordinate Voting Shares (including the exercise of the applicable over-allotment option) at a price of C\$6.50 per Subordinate Voting Share by the Company (the "**January Offering**");
- h) the material change report dated February 12, 2021 regarding the closing on February 12, 2021 of an underwritten overnight marketed offering of 7,475,000 Subordinate Voting Shares (including the exercise of the applicable over-allotment option) at a price of C\$10.00 per Subordinate Voting Share by the Company (the "**February Offering**");
- i) the management information circular dated June 8, 2021;
- j) the Investor Presentation filed on May 10, 2021;
- k) the material change report dated May 25, 2021 regarding the definitive binding agreement to purchase a vertically-integrated single state operator in Massachusetts;
- l) the Investor Presentation filed on June 2, 2021;
- m) the Investor Presentation filed on June 9, 2021;
- n) the Investor Presentation filed on July 13, 2021;
- o) the Investor Presentation filed on August 25, 2021;
- p) the Investor Presentation filed on September 13, 2021; and
- q) the material change report dated October 29, 2021 regarding the Company, as borrower, entering into a credit agreement providing for a term loan facility of up to US\$100 million.

**Any statement contained in this Prospectus or in a document incorporated or deemed to be incorporated by reference in this Prospectus will be deemed to be modified or superseded for purposes of this Prospectus to the extent that a statement contained in this Prospectus or in any other subsequently filed document which also is, or is deemed to be, incorporated by reference into this Prospectus modifies or supersedes that statement. The modifying or superseding statement need not state that it has modified or superseded a prior statement or include any other information set forth in the document that it modifies or supersedes. The making of a modifying or superseding statement shall not be deemed an admission for any purposes that the modified or superseded statement when made, constituted a misrepresentation, an untrue statement of a material fact or an omission to state a material fact that is required to be stated or that is necessary to prevent a statement that is made from being false or misleading in the circumstances in which it was made. Any statement so modified or superseded shall not be deemed, except as so modified or superseded, to constitute part of this Prospectus.**

Any document of the type required by National Instrument 44-101 – *Short Form Prospectus Distributions* to be incorporated by reference into a short form prospectus, including any annual information forms, material change reports (except confidential material change reports), business acquisition reports, interim financial statements, annual financial statements (in each case, including any applicable exhibits containing updated earnings coverage information) and the independent auditor’s report thereon, management’s discussion and analysis and information circulars of the Company filed by the Company with securities commissions or similar authorities in Canada after the date of this Prospectus and prior to the completion or withdrawal of any offering under this Prospectus shall be deemed to be incorporated by reference into this Prospectus. The documents incorporated or deemed to be incorporated herein by reference contain meaningful and material information relating to the Company and readers should review all information contained in this Prospectus, the applicable Prospectus Supplement and the documents incorporated or deemed to be incorporated by reference herein and therein.

Upon a new annual information form and annual consolidated financial statements being filed by the Company with the applicable Canadian securities commissions or similar regulatory authorities in Canada during the period that this Prospectus is effective, the previous annual information form, the previous annual consolidated financial statements and all interim consolidated financial statements and in each case the accompanying management’s discussion and analysis of financial condition and results of operations, and material change reports filed prior to the commencement of the financial year of the Company in which the new annual information form is filed shall be deemed to no longer be incorporated into this Prospectus for purpose of future offers and sales of Securities under this Prospectus. Upon interim consolidated financial statements and the accompanying management’s discussion and analysis of financial condition and results of operations being filed by the Company with the applicable Canadian securities commissions or similar regulatory authorities during the period that this Prospectus is effective, all interim consolidated financial statements and the accompanying management’s discussion and analysis of financial condition and results of operations filed prior to such new interim consolidated financial statements and management’s discussion and analysis of financial condition and results of operations shall be deemed to no longer be incorporated into this Prospectus for purposes of future offers and sales of Securities under this Prospectus. In addition, upon a new management information circular for an annual meeting of shareholders being filed by the Company with the applicable Canadian securities commissions or similar regulatory authorities during the period that this Prospectus is effective, the previous management information circular filed in respect of the prior annual meeting of shareholders shall no longer be deemed to be incorporated into this Prospectus for purposes of future offers and sales of Securities under this Prospectus.

Any statement contained in this Prospectus, any Prospectus Supplement or any document incorporated or deemed to be incorporated by reference in this Prospectus or any Prospectus Supplement shall be deemed to be modified or superseded for purposes of this Prospectus and such Prospectus Supplement to the extent that a statement contained in this Prospectus, such Prospectus Supplement or any other subsequently filed document which also is or is deemed to be incorporated by reference in this Prospectus or such Prospectus Supplement modifies or supersedes such prior statement. The modifying or superseding statement need not state that it has modified or superseded a prior statement or include any other information set forth in the document which it modifies or supersedes. The making of such a modifying or superseding statement shall not be deemed an admission for any purposes that the modified or superseded statement, when made, constituted a misrepresentation, an untrue statement of a material fact or an omission to state a material fact that is required to be stated or that is necessary to make a statement not misleading in light of the circumstances in which it was made. Any statement so modified or superseded shall not constitute a part of this Prospectus or the applicable Prospectus Supplement, except as so modified or superseded.

References to our website in any documents that are incorporated by reference into this Prospectus and any Prospectus Supplement do not incorporate by reference the information on such website into this Prospectus or any Prospectus Supplement, and we disclaim any such incorporation by reference.

Any “template version” of “marketing materials” (as those terms are defined in National Instrument 41-101 – *General Prospectus Requirements*) pertaining to a distribution of Securities filed after the date of a Prospectus Supplement and before termination of the distribution of Securities offered pursuant to such Prospectus Supplement will be deemed to be incorporated by reference into the Prospectus Supplement for the purposes of the distribution of the Securities to which the Prospectus Supplement pertains.

A Prospectus Supplement containing the specific terms of an offering of Securities and other information in relation to the Securities will be delivered to prospective purchasers of such Securities together with this Prospectus and shall be deemed to be incorporated by reference into this Prospectus as of the date of such Prospectus Supplement but only for the purposes of the distribution of the Securities to which that Prospectus Supplement pertains.

### **CURRENCY PRESENTATION AND EXCHANGE RATE INFORMATION**

Unless the context otherwise requires, all references to “\$”, “US\$” and “dollars” mean references to the lawful money of the United States. All references to “C\$” refer to Canadian dollars. On December 2, 2021, the Bank of Canada daily average rate of exchange was \$1.00 = C\$1.277740 or C\$1.00 = \$0.782632.

### **MARKET AND INDUSTRY DATA**

This Prospectus and the documents incorporated herein by reference include market and industry data that has been obtained from third-party sources, including industry publications. The Company believes that the industry data is accurate and that its estimates and assumptions are reasonable, but there is no assurance as to the accuracy or completeness of this data. Third party sources generally state that the information contained therein has been obtained from sources believed to be reliable, but there is no assurance as to the accuracy or completeness of included information. Although the data is believed to be reliable, the Company has not independently verified any of the data from third-party sources referred to in this Prospectus or the documents incorporated herein by reference or ascertained the underlying economic assumptions relied upon by such sources.

### **TRADEMARKS**

This Prospectus and the documents incorporated herein by reference include references to the Company’s trademarks, including, without limitation, Jushi®, which is protected under applicable intellectual property laws and are the Company’s property. The Company’s trademarks and trade names referred to in this Prospectus, the Prospectus and the documents incorporated therein by reference may appear without the ® or ™ symbol, but references to the Company’s trademarks and trade names in the absence of such symbols are not intended to indicate, in any way, that the Company will not assert, to the fullest extent under applicable law, its rights to these trademarks and trade names. All other trademarks and trade names used in this Prospectus or in documents incorporated herein by reference are the property of their respective owners.

### **WHERE YOU CAN FIND MORE INFORMATION**

We are subject to the full informational requirements of the securities commissions in all provinces and territories of Canada. You are invited to read and copy any reports, statements or other information, other than confidential filings, that we have filed or intend to file with the Canadian provincial and territorial securities commissions. These filings are electronically available from the Canadian System for Electronic Document Analysis and Retrieval (SEDAR) at [www.sedar.com](http://www.sedar.com). Except as expressly provided herein, documents filed on SEDAR are not, and should not be considered, part of this Prospectus.

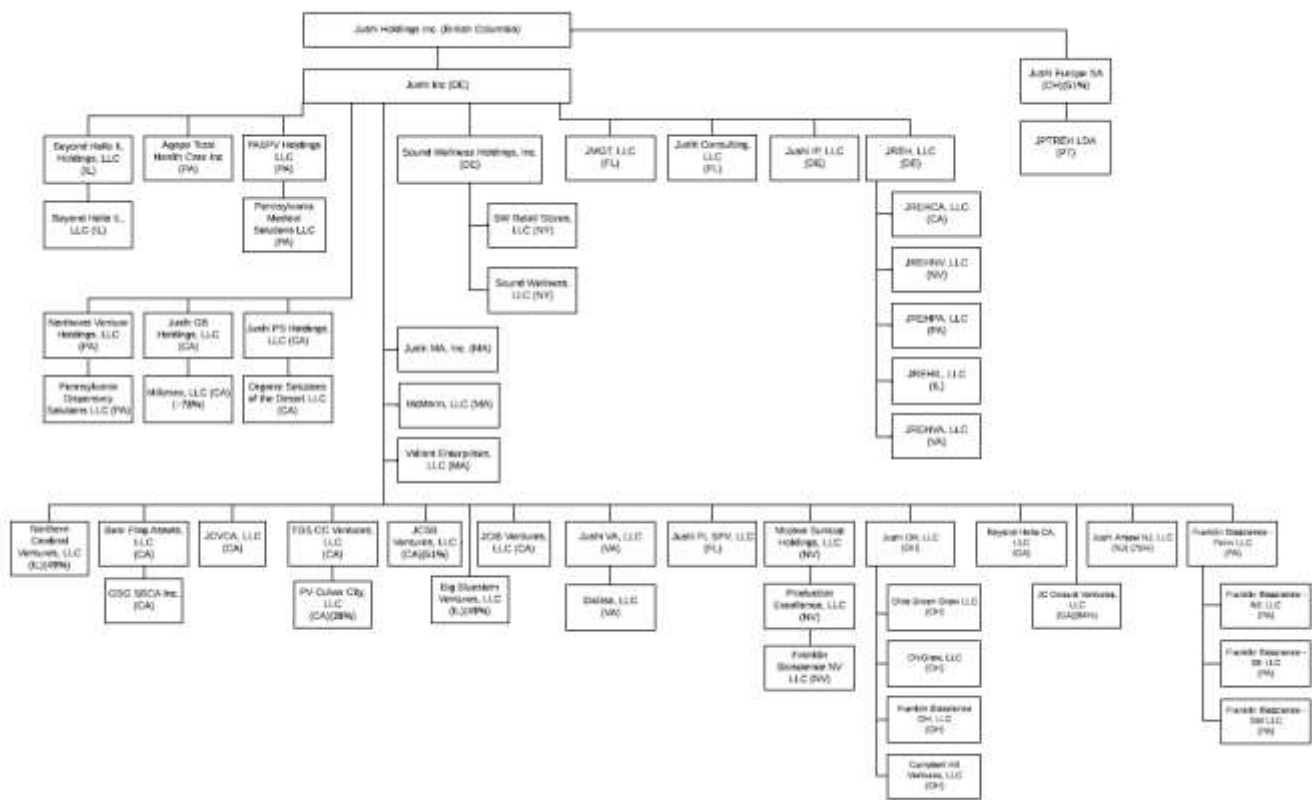
### **JUSHI HOLDINGS INC.**

The Company is a vertically integrated, multi-state cannabis operator engaged in retail, distribution, cultivation, and processing operations in both medical and adult-use markets. The Company and its management team are focused on building a diverse portfolio of cannabis assets through opportunistic investments and pursuing application opportunities in attractive limited license jurisdictions. The Company has targeted assets in highly populated, limited licensed medical markets on a trajectory toward adult-use legalization,

including Pennsylvania and Ohio, markets that are in the process of transitioning to adult-use, namely Virginia, and limited license, fast-growing, large adult-use markets, such as Illinois, California, Nevada, and Massachusetts.

The Company’s head office is located at 301 Yamato Road, Suite 3250, Boca Raton, FL 33431, and its registered address is Suite 1700, Park Place, 666 Burrard Street, Vancouver, British Columbia V6C 2X8. Additional information about our business is included in the documents incorporated by reference into this Prospectus.

The organizational chart of the Company and its subsidiaries, including the percentage of voting securities of each subsidiary held by the Company, either directly or indirectly, and their respective jurisdictions of incorporation, continuance, formation or organization as at the date of this Prospectus, is set forth below. Unless otherwise noted in the box containing the name of the applicable subsidiary, the parent of such subsidiary owns 100% of the outstanding securities of such subsidiary.



## Strategy

The Company’s business strategy is to evaluate each market opportunity pursuant to the relevant local competitive and regulatory landscape, supply/demand dynamics, and growth potential. The Company evaluates the economic viability of each opportunity before making capital allocation decisions and may decide to participate in one or more facets of the supply chain based on the dynamics mentioned above. In limited license medical markets (e.g., Pennsylvania), or markets in the process of transitioning to adult-use (e.g., Virginia), Jushi may seek to expand its cultivation assets despite the high level of capital investment required, given the significant market opportunity. Also, in other markets, Jushi may seek a more balanced capital allocation approach where it may acquire a grower-processor and/or additional retail dispensaries in a market where it currently operates, such as Illinois, Ohio, California, Massachusetts and Nevada. Lastly, in limited license adult-use cannabis markets that are expanding (e.g., Massachusetts), Jushi may allocate significant capital to acquire a vertically integrated operator. By establishing a strong platform and retail-brand recognition in markets that have the

greatest growth potential, Jushi expects to be well-positioned to have a first-mover advantage for future growth in adult-use cannabis once it is further legalized.

## **Growth**

The Company is focused on expanding its retail, cultivation, manufacturing and processing presence in current markets, while pursuing acquisition opportunities across the supply chain in limited license markets that complement the Company's existing portfolio. The Company's financial capacity allows it to operate from a position of strength and it is expected that such financial capacity will help the Company emerge as an even stronger player in this industry. The Company plans to implement its growth strategy by expanding its presence in current markets, increasing its offering of branded product lines, targeting acquisition opportunities across the supply chain, and applying for de novo licenses.

## **Current Operations**

### *Retail*

As of the date of this Prospectus, the Company operates sixteen medical cannabis dispensaries in the Commonwealth of Pennsylvania, located in or around the cities of Ardmore, Bethlehem, Bristol, Colwyn, Easton, Hazleton, Irwin, Johnstown, Philadelphia (three locations), Reading, Scranton (two locations), Stroudsburg, and West Chester. All sixteen dispensaries are operated under the Company's "BEYOND/HELLO™" brand. The Company is permitted to open two additional dispensaries in the Commonwealth of Pennsylvania.

As of the date of this Prospectus, the Company operates four adult use (with two co-located medical) cannabis dispensaries in the State of Illinois, located in or around the cities of Sauget, Normal and Bloomington. All four dispensaries are operated under the Company's "BEYOND/HELLO™" brand. In August 2021, the Company's partner Northern Cardinal Ventures, LLC was awarded a conditional retail dispensary license in Illinois via the state's lottery process. The dispensary location is designated for the Peoria Bureau of Labor Statistics region in Illinois and will be BEYOND/HELLO's fifth location in the state.

As of the date of this Prospectus, the Company operates two medical cannabis dispensaries in the Commonwealth of Virginia, located in the city of Manassas and Sterling. The dispensaries operate under the Company's "BEYOND/HELLO™" brand. The Company is permitted to open four additional dispensaries in the Commonwealth of Virginia, subject to local zoning and state regulatory approvals.

In September 2021, the Company announced that it closed on its acquisition of Nature's Remedy of Massachusetts, Inc. and certain of its affiliates (collectively, "Nature's Remedy"). As of the date of this Prospectus, the Company operates two adult use cannabis dispensaries in the Commonwealth of Massachusetts (with one co-located medical) located in the Tyngsborough and Millbury. The dispensaries operate under the Company's Nature's Remedy™ brand.

As of the date of this Prospectus, the Company operates two medical and adult use cannabis dispensaries in the State of California located in the City of Palm Springs and the City of Santa Barbara. The dispensaries operate under the Company's BEYOND/HELLO™ brand.

The Company expects to incur approximately \$11 million of capital expenditures from October 1, 2021, through December 31, 2021, related to the build-out of its retail operations and property purchases.

The Company also operates a cannabidiol ("CBD") retail store at the Dent Neurologic Institute in Amherst, New York, where it sells its physician formulated industrial hemp-derived products under its "Nira" brand. Given that "Nira" branded products are derived from industrial hemp, they may be sold legally under U.S. federal law pursuant to the Farm Bill. In addition, "Nira" branded products are sold throughout the U.S. in premier retailers and pharmacies as well as through a small number of third-party vendors who buy the products from a subsidiary of the Company at wholesale prices. The Company utilizes third party manufacturers who produce the "Nira" products on behalf of the Company.

### *Online Platforms*

The Company operates an age-gated online educational platform ([www.beyond-hello.com](http://www.beyond-hello.com)) for patients and customers (the “**Online Platform**”). Prior to launching the Online Platform, the Company’s compliance team and internal and external counsel undertook a review of the applicable federal and state privacy, advertising and cannabis laws and launched the Online Platform in a manner intended to ensure compliance with such laws. The Online Platform is not intended to be used for advertising activities but is intended to be used solely as a virtual educational tool, allowing patients and customers to understand the cannabis products that the Company offers and view real-time pricing and product availability at the Company’s dispensaries. The Online Platform does not provide any education, information or any other functionalities with respect to any third-party dispensaries.

No cannabis purchase and sale transactions occur on the Online Platform. A patient or customer may reserve products using the Online Platform, but the patient or customer must be physically present at the point-of-sale to consummate the purchase and sale of products. This requirement allows the Company and dispensary staff to ensure that the Company’s standard operating procedures (including its compliance program(s)) are applied to all patients and customers in connection with the purchase and sale of products.

In jurisdictions where medical cannabis is legal, upon arrival of the patient at the applicable dispensary, or at the point of delivery (where permissible), dispensary staff must verify the patient’s identity and accreditation (such as a state-issued medical cannabis card) and confirm the patient’s allotment to ensure the user is not exceeding the state’s allotment limits. Once the foregoing is verified, the patient may pay for the product(s) to complete the purchase. If the customer does not have valid identification and accreditation, the customer will not be able to purchase medical cannabis at the applicable Company dispensary, irrespective of any reservation(s) made on the Online Platform.

In jurisdictions where recreational cannabis is legal, upon arrival of the customer at the applicable dispensary, or at the point of delivery (where permissible), dispensary staff must verify that the customer is at least 21 years of age by verifying the customer’s government-issued identification. Once the identification is verified, the customer may pay for the product(s) to complete the transaction. If the customer does not have valid identification, the customer will not be able to purchase recreational cannabis at the applicable Company dispensary, irrespective of any reservation(s) made on the Online Platform.

The Company also sells its “Nira” branded products through its CBD e-commerce platform ([www.niracbd.com](http://www.niracbd.com)). As aforementioned, “Nira” branded products may be sold legally throughout the United States (including online) pursuant to the Farm Bill.

### *Cultivation & Production*

The Company is currently engaged in cannabis cultivation and production operations in Nevada, through its subsidiary Franklin Bioscience NV, LLC (“**FBS-NV**”), which became a subsidiary of the Company on April 1, 2021. FBS-NV holds medical and adult-use cannabis cultivation, processing and distribution licenses originally issued by the Nevada Department of Taxation, the predecessor regulatory body to the now applicable regulatory body the Nevada Cannabis Compliance Board (“**NV CCB**”) and a hemp handler license issued by the Nevada Department of Agriculture (“**NV DOA**”). Pursuant to its licenses, FBS-NV currently engages in cultivation and production operations in North Las Vegas, Nevada, and is permitted to purchase and/or sell cannabis and cannabis products to other authorized licensees on a wholesale basis. Pursuant to the hemp handler license, FBS-NV is permitted to handle raw industrial hemp, purchase hemp-derived constituents (such as hemp-derived CBD) from licensed hemp operators, and to infuse or manufacture products containing hemp-derived constituents. In Nevada, FBS Nevada operates one of the two 7,200 sq. ft. adjacent facilities and has upgraded the facility with state-of-the-art, indoor, double-stacked cultivation that yields approximately 2,500 lbs. of biomass per year. FBS Nevada plans to connect the two facilities to create a single production space for a total of 18,000 sq. ft. The expansion is expected to more than quadruple cultivation capacity to 11,000 lbs. per year and be completed by the fourth quarter of 2022. The Company expect to incur capital expenditures beginning in the first quarter of 2022, related to the expansion of these facilities.



Further, the Company, through its subsidiary Dalitso LLC (“**Dalitso**”), operates a pharmaceutical processor facility in Manassas, Virginia (the “**Manassas Facility**”), allowing the Company to cultivate, process, dispense and deliver medical cannabis to registered patients in Virginia. The Manassas Facility is approximately 93,000 square feet, of which approximately 30,000 square feet is currently built-out. On May 5, 2021, the Company acquired the Manassas Facility, operated by Dalitso, together with approximately nine acres of surrounding land in Prince William County, Virginia.

In December 2020, the Company completed the initial 30,000 sq. ft. phase one build-out of the VA Facility, vertically integrated facility including the co-located cannabis dispensary, operated by Dalitso, the Company’s 100% owned pharmaceutical processor permit holder. In May 2021, the Company began phase one of the expansion, which is expected to add approximately 63,000 sq. ft. of cultivation, manufacturing and processing capacity, and should be completed by the end of the first quarter of 2022. At full capacity, the facility will have 19,000 sq. ft. of canopy and an annual production capacity of approximately 12,000 lbs. of biomass that should come to market by the end of the second quarter of 2022 or early Q3 as the construction ends at the end of Q1 and the grow cycles begin in Q2. The Company is also in the design phase of constructing a second connected on-site building that would also be built-out in two phases (phase two and phase three). Phase two of the second building is expected to add another approximately 100,000 sq. ft., 35,000 sq. ft. of canopy, and 23,000 lbs. of biomass for a total of approximately 195,000 sq. ft., approximately 54,000 sq. ft. of canopy, and approximately 35,000 lbs. of annual biomass capacity. We expect to be able to complete phase two by the end of the first quarter of 2023 and begin the planting cycle in Q2 of 2023. Phase three would add another approximately 70,000 square feet to the facility, 69,000 sq. ft. of canopy, and 45,000 lbs. of annual biomass capacity for a total of approximately 263,000 square feet, 123,000 sq. ft. of canopy, and 80,000 lbs. of annual biomass capacity. Dalitso’s planned buildout of the VA Facility, enables Dalitso to efficiently produce a consistent supply of medical cannabis products as patient access improves and the medical cannabis program continues to mature and expand. The Company expects to incur approximately \$14 million of capital expenditures from October 1, 2021, through December 31, 2021, related to the expansion of this facility.

The Company is currently engaged in cannabis cultivation and processing in Pennsylvania an 89,000 square foot grower-processor facility in Scranton, Pennsylvania (the “**Pennsylvania Facility**”), which is operated by Pennsylvania Medical Solutions, LLC (“**PAMS**”), a wholly-owned subsidiary of the Company. On November 23, 2020, the Company announced its intention to launch a phased expansion of the Pennsylvania Facility. PAMS has entered into an amendment to increase the funding capacity of its existing lease with a subsidiary of Innovative Industrial Properties, Inc. making available \$30 million in funding (which is reflected in the Company’s right-of-use lease liabilities including interest) for the first phase of property development of the Pennsylvania Facility. The funding will be used to complete the buildout of the existing 81,000 sq. ft. building and an approximately 40,000 sq. ft. expansion of the Pennsylvania Facility for a total of 123,000 sq. ft. The Company has added many parcels of land to the footprint and is close to being able to expand to over 300,000 square feet. With over 300,000 square feet of total plant capacity, the initial 81,000 square foot facility will become the center of all operations with a much larger manufacturing and post-harvest operation that will support the larger facility. The first phase of the expansion, with an estimated budget of approximately \$40 million, will add approximately 40,000 square feet, bringing the total square footage to 123,000 square feet and total canopy to approximately 44,000 square feet, increase annual biomass capacity from approximately 10,000 lbs. to 25,000 lbs. and is expected to be completed by the first quarter of 2022, subject to regulatory approvals, and begin to generate revenue by the second quarter of 2022. The Company plans to introduce new technologies, including hydrocarbon extraction in December 2021, which is expected to increase extraction productivity by 4 times and produce a much higher-quality product. The Company expects PAMS to begin the second phase of the expansion in the first quarter of 2022, with an estimated completion date of the fourth quarter of 2022, subject to regulatory approvals. The Company expects to incur approximately \$7 million of capital expenditures from October 1, 2021, through December 31, 2021, related to the expansion of this facility. The grower-processor facility is expected to be approximately 210,000 sq. ft. after both phases of the buildout have been completed. Phase two of the expansion would increase total canopy from 44,000 square feet to approximately 100,000 square feet and increase biomass capacity from approximately 25,000 lbs. to approximately 67,000 lbs. In addition to these two contemplated phases of buildout, PAMS continues to assess and develop further expansion opportunities at the Pennsylvania Facility to meet the needs of patients and wholesale market demand, now and in the future.

In September 2021, the Company announced that it closed on its acquisition of Nature's Remedy. Nature's Remedy currently operates a 50,000 sq. ft. cultivation and production facility in Lakeville, MA with approximately 22,000 sq. ft. of high-quality indoor flower canopy and state-of-the-art extraction and manufacturing capabilities (the "Lakeville Facility"). Currently, the 50,000 sq. ft. Lakeville Facility's flower canopy encompasses approximately 19,500 sq. ft., which Nature's Remedy expects to expand to approximately 33,000 sq. ft. by the end of the year. Current flower production at the Lakeville Facility is approximately 9,000 lbs./year, which, as part of the expected expansion, Nature's Remedy could increase to approximately 29,000 lbs./year based on 33,000 sq. ft. of canopy. Nature's Remedy is also evaluating further expansion opportunities in the existing Lakeville industrial complex and/or on ten acres of land owned by Nature's Remedy in Grafton, MA. The Lakeville Facility could potentially accommodate an additional 18,000 to 20,000 sq. ft. of flower canopy through the expansion into approximately 26,000 sq. ft. of adjacent space in the existing building. In Grafton, MA, Nature's Remedy has a Host Community Agreement in place with the city and recently received a provisional cultivation license from the Commonwealth. The ten acres of land in Grafton, MA could potentially accommodate a 35,000 to 40,000 sq. ft. new facility with approximately 18,000 sq. ft. of flower canopy. These expansions are subject to business evaluations and needs, and receipt of applicable regulatory approvals. The Company expects to incur approximately \$1 million of capital expenditures from October 1, 2021, through December 31, 2021 related to the Nature's Remedy expansions.

In July 2021, the Company announced that Franklin Bioscience OH, LLC, ("FBS - OH"), a licensed medical marijuana processor in Ohio, received authorization to commence operations at the Company's newly constructed 8,000 sq. ft. state-of-the-art processing facility located in Columbus. In August 2021, the Company completed its acquisition of FBS - OH, and launched a series of brands and products in the state, beginning with the debut of Sèche, the Company's fine flower line. The Company followed the Sèche brand launch with the debut of Tasteology, the Company's brand of premium, real fruit, cannabis-infused gummies and tarts.

The Company constructed an 8,000 sq. ft., state-of-the-art processing facility located in Columbus, Ohio that commenced operations in July 2021. The Company plans on introducing hydrocarbon extraction capabilities by the end of 2021, which will allow for the start of production of distillate products in the first quarter of 2022. The Company projects that at scale the facility will be capable of processing upwards of 10,000 lbs. of biomass annually. Additionally, the Company has acquired OhiGrow, LLC and Ohio Green Grow LLC (collectively, "OhiGrow") located in Toledo, Ohio for a total consideration of \$5.0 million. The OhiGrow facility consists of one parcel of land totaling 1.35 acres containing an approximately 10,000 sq. ft. free-standing building. OhiGrow holds a Level II cultivation license that allows for an initial 3,000 square feet of cultivation area. OhiGrow starts production soon and expects its first harvest by December 2021. OhiGrow will operate approximately 2,200 square feet of canopy and expects to produce approximately 1,900 lbs. of biomass annually. There is an additional 15,000 sq. ft. of available vacant space on the property, which can be further developed. OhiGrow holds a Level II cultivation license from the state of Ohio. The Company intends to apply for the necessary approvals to expand the OhiGrow facility's cultivation area to the maximum 9,000 sq. ft. currently permitted under the Level II cultivation license and is expected to produce approximately 10,000 lbs. of biomass per year. The Company expects to incur approximately \$0.3 million of capital expenditures from October 1, 2021, through December 31, 2021, related to the expansion of this facility.

### *Product Selection and Offerings*

With respect to the Company's cannabis business, senior leaders from the business development, operations, finance, marketing, and sales teams negotiate with potential brand vendors across all product categories including flower, vape pens, oils, extracts, edibles and pre-rolls to make future product selection decisions. Leveraging managements' experience, the Company analyzes market dynamics, product quality, profit and loss, impact and consumer demand to carry out its long-term strategy in each market. With high-impact retail locations in key markets, the Company expects to be a desirable partner for nationally scaling brands and/or in-house products.

In Pennsylvania, the Company's dispensaries sell the Company's own in-house brands and a variety of third-party cannabis products, including, cannabis dry flower, vaporizer forms of cannabis, cannabis oil in capsule, tinctures, cannabis in topical products, and other cannabis products. Further in Pennsylvania, the Company's Pennsylvania Facility produces and sells cannabis dry flower and dry flower products, and a range of cannabis products. In connection with such cultivation and processing, the Company intends to utilize its intellectual property, including trademarks, trade secrets, extraction techniques, concentrates and other proprietary information related to cannabis brands for the products created in Pennsylvania. These brands and formulations include:

### *Premium Flower: The Bank*

Jushi relaunched its acquired, award-winning Colorado brand, The Bank known for its superior plant genetics and next-level cultivation. The Bank offers pre-packaged flower, infused blunts and pre-rolls comprised of three tiered lines: Gold Standard, Cache and Vault each offering varying degrees of quality, availability and price. Currently, The Bank is available at dispensaries across Virginia, Nevada and Pennsylvania, including the Company's BEYOND/HELLO™ locations in Virginia and Pennsylvania.

### *Vapes & Concentrates: The Lab*

Jushi relaunched another of its acquired, award-winning Colorado brand, The Lab, renowned for high-quality, precision vape products, and concentrates, including the pioneering of live resin. The Lab offers a wide selection of vape cartridges, disposables and concentrates. Currently, The Lab is available at dispensaries in Nevada, Ohio, Pennsylvania and Virginia, including the Company's BEYOND/HELLO™ locations in Pennsylvania and Virginia.

### *Edibles: Tasteology*

Jushi launched Tasteology, an edible brand offering premium, real fruit, cannabis-infused gummies and chewable tablets. Tasteology is the culmination of extensive consumer research into both the taste and effect preferences of people in Jushi's markets where edibles can be offered. Currently, Tasteology is available at dispensaries in Nevada and Ohio as well as the Company's BEYOND/HELLO™ dispensary in Manassas, Virginia.

### *Medicinal: Nira + Medicinals*

Nira + Medicinals ("Nira +") develops high quality, THC and CBD-rich medical products aimed at improving the quality of life for all cannabis patients. Nira+ product line includes tinctures, capsules, softgels and topicals. Currently, Nira+ is available at dispensaries across Pennsylvania, including the Company's BEYOND/HELLO™ locations in Pennsylvania. It will be available at the Company's BEYOND/HELLO™ locations in Virginia.

### *Fine Grind (Shake), Fine Flower (Popcorn) and Singles (Pre-Rolls): Sèche*

Sèche is a new category in cannabis that redefines the perception of value products like shake and popcorn. Sèche offers products like Fine Grind (Shake), Fine Flower (Popcorn) and Singles (Pre-Rolls). Currently, Sèche is available at dispensaries across Virginia, Nevada, Ohio and Pennsylvania, including at the Company's BEYOND/HELLO™ locations in Virginia and Pennsylvania.

In Illinois, the Company's dispensaries sell a variety of third-party cannabis products, including, cannabis dry flower, vaporizer forms of cannabis, cannabis oil in capsule, tinctures, cannabis in topical products, cannabis edible products and other cannabis products.

In Nevada, the cultivation and processing operation of FBS-NV currently sells cannabis dry flower and dry flower products, cannabis tarts, cannabis gummies, and cannabis in pressed pill form. Additionally, the Company is utilizing its intellectual property, including trademarks, trade secrets, extraction techniques, concentrates and other proprietary information related to cannabis brands for the products created and sold in Nevada by FBS-NV. These brands and formulations include "The Bank", "The Lab", "Sèche" and "Tasteology".

In Virginia, Dalitso is developing a product line that includes cannabis oil in capsule, tinctures, vaporizer forms of cannabis, cannabis in topical products, cannabis in edible products and other cannabis products. In August 2021, the Company launched its brand, The Lab, in the form of .5g and .3g vaporizable cartridges and its brand, Tasteology, a cannabis-infused chewable line. Additionally, the Company launched its flower brands, The Bank and Sèche in September 2021, after receiving the Virginia Board of Pharmacy's approval. The

Company's brands will be available for purchase at BEYOND/HELLO™ Manassas, additional BEYOND/HELLO™ locations once opened, as well as at partner dispensaries across Virginia.

In Ohio, FBS - OH, launched a series of brands and products in the state, beginning with the debut of its brand, Sèche, the Company's fine flower line, which is currently available for purchase at partner dispensaries across Ohio. Jushi plans to follow the Sèche brand launch with the debut of Tasteology, the Company's brand of premium, real fruit, cannabis-infused gummies and tarts, and The Lab, the Company's award-winning vaporization line.

In California, the Company's operating dispensary sells a variety of third-party cannabis products, including cannabis dry flower and dry flower products, cannabis tarts, cannabis gummies, and cannabis in pressed pill form.

With respect to the Company's hemp business, the Company sells "Nira" branded CBD products. Types of products include high-quality, hemp-based cannabidiol supplements, tinctures, soft gels, and topicals/lotions.

The Company is selling both in-house branded and third party manufactured products through its "BEYOND/HELLO™" branded retail cannabis dispensaries as well as through other channels. In addition to branded and manufactured finished products, the Company plans to sell bulk refined cannabinoids and terpenes to vendors for use in their own finished products, as its production capacity increases in certain markets. The full scale and allocation of production utilization will depend upon the scale of Company-owned and managed retail footprint in addition to the production capacity of the Company's cultivation and production facilities.

#### *Operations in Europe*

The Company holds a 51% interest in Jushi Europe SA, a business entity organized under the laws of Switzerland ("**Jushi Europe**"). Jushi Europe's wholly owned Portuguese subsidiary, JPTREH Unipessoal Limitada, a business entity organized under the laws of Portugal ("**Jushi Portugal**"), submitted an application to Portugal's INFARMED (National Authority for Medicines and Health Products) in May 2020 for import, cultivation and export of medical cannabis. Jushi Portugal was granted a pre-license from INFARMED on November 9, 2020. Jushi Portugal has acquired 32 acres of land to construct a greenhouse cultivation facility in southern Portugal. If construction is completed and a final license is awarded from INFARMED as planned in 2022, Jushi Portugal plans to sustainably produce high quality EU-GMP certified medical cannabis and export such medical cannabis from Portugal to Germany, and potentially to other European nations, including Switzerland, France and the UK. The Company expects to incur approximately \$3 million of capital expenditures from October 1, 2021, through December 31, 2021, related to the build-out of this facility.

#### *Capital Expenditures Summary*

The Company expects to incur capital expenditures of approximately \$35 million - \$40 million for the period from October 1, 2021 through December 31, 2021, subject to market conditions and regulatory changes, for purchases of properties, plant and equipment, including improvements and construction of buildouts of certain locations, including for properties for which the lease is conditional on obtaining the applicable related license or for which other contingencies exist, but excluding capital expenditures for acquisitions that have not yet closed.

Neither Jushi Europe nor Jushi Portugal operates or currently plans to operate in any emerging markets (as defined by OSC Staff Notice 51-720 – *Issuer Guide for Companies Operating in Emerging Markets*).

Neither Jushi Europe nor Jushi Portugal are material to the Company at this time.

## **Other Recent Developments**

### *Announced Management and Board Changes*

On May 26, 2021, the Company announced that Marina Hahn, a successful marketing executive and experienced brand builder, was appointed as a Director of the Company. On June 30, 2021, Erich Mauff resigned as Co-President and Director of the Company and Leonardo “Leo” Garcia-Berg, a former global supply chain executive for Anheuser-Busch InBev and former consultant at McKinsey & Co. was appointed as the Company’s Chief Operations Officer. On August 4, 2021, the Company announced the appointment of Brendon Lynch as the Company’s Executive Vice President of Retail Operations. Brendon Lynch brings decades of retail expertise to Jushi that he refined and developed while working with companies such as Anthropologie, Rudy’s Barbershop, TOMS, David Yurman and the Gap. On October 18, 2021, the Company announced Kimberly Bambach stepped down from her role as Chief Financial Officer and the appointment of Edward Kremer as the Company’s Chief Financial Officer.

### *Announced the Transition to Domestic Issuer Status in the United States*

On July 22, 2021, since more than 50% of the Company’s issued and outstanding subordinate voting shares were directly or indirectly owned by shareholders of record domiciled in the United States on June 30, 2021, Jushi no longer meets the definition of a “foreign private issuer” under United States securities laws. Therefore, the Company will be deemed a U.S. domestic issuer under United States securities laws and will be subject to SEC reporting requirements applicable to U.S. domestic companies, which will require Jushi’s financial statements and financial data to be presented under U.S. GAAP.

### *Announced a Series of Cannabis Brands and Product Launches in Virginia*

In August, the Company launched a new suite of concentrates and chewables brands to help meet the Commonwealth of Virginia’s growing marketplace demands. Beginning with the debut of its brand, The Lab, in the form of .5g and .3g vaporizable cartridges. The Company launched the brand, Tasteology, beginning with its chewables line shortly thereafter. Jushi’s brands are available for purchase at BEYOND/HELLO™ Manassas, additional BEYOND/HELLO™ locations once opened, as well as at partner dispensaries across Virginia.

### *Conversion of Super Voting Shares and Multiple Voting Shares*

On August 9, 2021 the Company announced that all issued and outstanding Super Voting Shares of Jushi and Multiple Voting Shares of Jushi were converted into Subordinate Voting Shares of Jushi in accordance with the terms of the Super Voting Shares and Multiple Voting Shares. The outstanding warrants to acquire Super Voting Shares and Multiple Voting Shares were also converted into warrants to acquire Subordinate Voting Shares, without any amendment to the other terms of such warrants. In particular:

- 149,000 Super Voting Shares were converted into 14,900,000 Subordinate Voting Shares
- 162,750 warrants to acquire Super Voting Shares were converted into 16,275,000 warrants to acquire Subordinate Voting Shares
- 4,000,000 Multiple Voting Shares were converted into 4,000,000 Subordinate Voting Shares; and
- 6,750,000 warrants to acquire Multiple Voting Shares were converted into 6,750,000 warrants to acquire Subordinate Voting Shares.

The Conversions were made as a result of consent notices received by Jushi from the requisite holders of the Super Voting Shares and the Multiple Voting Shares. Following the Conversions, there are no Jushi Super Voting Shares or Multiple Voting Shares issued and outstanding.

### *Company’s Partner, Northern Cardinal Ventures, Wins Dispensary License in Illinois*

In August, the Company announced that its partner, Northern Cardinal Ventures, LLC (“Northern Cardinal”), was awarded a conditional retail dispensary license in Illinois via the state’s lottery process. Jushi is an operational and 49% equity partner in Northern Cardinal. Pending regulatory approvals, the new dispensary will operate under Jushi’s retail brand, BEYOND/HELLO™, and would be the fifth BEYOND/HELLO™ location in Illinois. The dispensary location is designated for the Peoria Bureau of Labor Statistics region.

*Announced Launch of Flower Brands, The Bank and Sèche in Virginia as Commonwealth’s Flower Sales Begin*

In September, the Company launched received the Virginia Board of Pharmacy (“BOP”) approval to begin selling its premium flower brand, The Bank, and its value flower brand, Sèche, to Virginia patients. Jushi will continue to roll out its in-house flower brands to additional BEYOND/HELLO™ Virginia locations as they open, and to partner dispensaries in the Commonwealth in the coming weeks and months. The Company is also expected to launch Nira + Medicinals, a suite of tinctures, capsules, softgels and topicals, in Virginia in the coming weeks.

*Opened 22nd BEYOND/HELLO™ Retail Location Nationwide and 15th Store in Pennsylvania through its Subsidiary, Franklin Bioscience - SE LLC*

On September 8, 2021, the Company opened its 22nd BEYOND/HELLO™ retail location nationwide, 15th medical marijuana dispensary in Pennsylvania and 7th storefront in the Greater Delaware Valley through its subsidiary, Franklin Bioscience - SE LLC. BEYOND/HELLO™ Colwyn began serving Pennsylvania medical marijuana patients and caregivers on Wednesday, September 8, 2021 at 10:00 a.m., providing a differential in-store experience coupled with convenient online reservations available through beyond-hello.com and in-store express pickup.

*Jushi Holdings Inc. Secures US\$100 Million Acquisition Facility from Roxbury, LP as Agent to SunStream Bancorp Inc.*

On October 20, 2021, the Company entered into definitive documentation in respect of a US\$100 million Senior Secured Credit Facility (the “Acquisition Facility”) with Roxbury, LP acting as agent to SunStream Bancorp Inc. (“Sunstream”), a joint venture sponsored by Sundial Growers Inc. (NASDAQ:SNDL). Jushi has drawdown US\$40.0 million from the Acquisition Facility to fund the cash portion of the recently completed acquisition of Nature’s Remedy of Massachusetts, Inc. and certain of its affiliates (collectively, “Nature’s Remedy”). Additionally, the Company will consider borrowing future amounts under the Acquisition Facility for potential strategic expansion opportunities in both its core and developing markets. After being drawn, loans issued under the Acquisition Facility will bear an interest rate of 9.5% per annum, payable quarterly, and will mature five years from the closing date. The Company will be able to make additional draws under the facility for an 18-month period, and will have a two-year interest-only period before partial amortization begins on a quarterly basis. The Company also may increase the total commitment of the Acquisition Facility by an aggregate amount of up to \$25 million, subject to certain conditions. The Acquisition Facility is secured by a first lien over certain Company assets and on a pari passu basis with current senior indebtedness on existing assets that are collateralized under the Company’s current senior debt.

*Received ~\$16.4 Million Final Arbitration Award*

On October 20, 2021, the American Arbitration Association (the “Panel”) awarded approximately \$16.4 million (the “Final Award”) to Jushi FL SPV, LLC, a subsidiary of Jushi Holdings Inc., in its dispute against San Felasco Nurseries, Inc. (“San Felasco”), a subsidiary of Harvest Health & Recreation, Inc. based on breach of contract and breach of implied covenant of good faith claims brought by Jushi against San Felasco in October of 2018. The Final Award consists of approximately \$10.6 million in damages, plus approximately \$4 million in pre-award interest (accrued at a rate of \$3,497 per day), post-award interest at a rate of 12% per annum and approximately \$1.7 million in attorney’s fees and costs. Subject to appeal of the Final Award, a third party is entitled to receive 25% of the recovery of the arbitration, net of all fees and costs related to SFN.

*Opened 25th Retail Location Nationwide, 16th BEYOND / HELLO™ Store in Pennsylvania*

On October 22, 2021, the Company announced the opening of its 25th retail location nationwide and its 16th BEYOND / HELLO™ medical marijuana dispensary in Pennsylvania through its subsidiary Franklin Bioscience - NE LLC. BEYOND / HELLO™ Stroudsburg began serving Pennsylvania medical marijuana patients and caregivers on Wednesday, October 27, 2021.

*Opened 26th Retail Location Nationwide, 2nd BEYOND / HELLO™ Store in Virginia*

On October 29, 2021, the Company announced the opening of its 26th retail location nationwide and the second of six dispensary openings in Virginia for the Company, through its subsidiary Dalitso LLC. BEYOND / HELLO™ Sterling began serving Virginia medical cannabis patients and registered agents on Tuesday, November 2, 2021.

**Recent and Pending Acquisitions**

*Further Expansion in Nevada*

On November 17, 2021, the Company announced it entered a definitive agreement to acquire NuLeaf, Inc. together with its subsidiaries and related companies (collectively, “NuLeaf”), a Nevada-based vertically integrated operator, for total consideration of up to US\$62.5 million. NuLeaf currently operates two high-performing adult-use and medical retail dispensaries in Las Vegas, NV and Lake Tahoe, NV, in addition to a 27,000 sq. ft. cultivation facility in Sparks, NV, as well as a 13,000 sq. ft. processing facility in Reno, NV. Additionally, NuLeaf owns a third licensed retail dispensary located directly on Las Vegas Boulevard, expected to become operational in early 2022, subject to regulatory approval and other conditions.

*Signed Definitive Agreement to Acquire an Operating Dispensary in Las Vegas, Nevada*

The Company entered into a definitive agreement to acquire 100% of the equity interest of an entity operating an adult-use and medical retail dispensary under the name The Apothecarium, which is used under license with an affiliate of TerrAscend Corp. in Las Vegas, Nevada (“Apothecarium Nevada”). The Apothecarium Nevada acquisition, together with the April 2021 purchase of Franklin Bioscience NV, LLC, a holder of medical and adult-use cannabis cultivation, processing, and distribution licenses, will enable Jushi to become vertically integrated in Nevada, as well as provide significant branding exposure for Jushi’s high-quality product lines, including The Bank, The Lab, Tasteology and Sèche. This will be the Company’s fourth vertically integrated state, accompanying Pennsylvania (by way of its affiliated subsidiaries), Virginia, and Massachusetts.

*Completed Acquisition of Nature’s Remedy of Massachusetts, Inc.*

In September 2021, Jushi announced that it closed its previously announced acquisition of Nature’s Remedy, a vertically integrated single state operator in Massachusetts. Nature’s Remedy currently operates two retail dispensaries, in Millbury, MA and Tyngsborough, MA, and a 50,000 sq. ft. cultivation and production facility in Lakeville, MA with approximately 22,000 sq. ft. of high-quality indoor flower canopy and state-of-the-art extraction and manufacturing capabilities. The Company’s entrance into Massachusetts marks the seventh state where it operates cannabis assets and the third state where it is vertically integrated.

*Completed Acquisition of Licensed Cultivator and Licensed Processor in Ohio*

In August, the Company announced it completed its previously announced acquisition of Franklin Bioscience OH, LLC, (“FBS – OH”), a licensed medical cannabis processor in Ohio.

On July 15, 2021, the Company closed on its previously announced acquisition of OhiGrow, LLC, one of 34 licensed cultivators in Ohio, and Ohio Green Grow LLC (collectively, “OhiGrow”), for total consideration of \$5.0 million in cash, inclusive of an approximately 10,000 sq. ft. facility and 1.35 acres of land. OhiGrow, based in Toledo, Ohio, will complement the 8,000 sq. ft. state-of-

the-art Ohio medical cannabis processing facility that has recently commenced operations, to which Jushi provides operational and consulting services.

In July 2021, the Company announced that Franklin Bioscience OH, LLC, (“FBS - OH”), a licensed medical marijuana processor in Ohio, received authorization to commence operations at the Company’s newly constructed 8,000 sq. ft. state-of-the-art processing facility located in Columbus. In August 2021, the Company completed its acquisition of FBS – OH, and launched a series of brands and products in the state, beginning with the debut of Sèche, the Company’s fine flower line.

#### *Completed Acquisitions of Two California Retail Dispensaries*

In April 2021, the Company closed on its previously announced acquisition of 100% of the equity of OSD for \$5 million total consideration comprised of \$1.9 million cash and \$3.1 million in promissory notes, subject to adjustments. In March 2021, the Company closed on its previously announced acquisition of approximately 78% of the equity of Grover Beach for approximately \$3.6 million in cash, after adjustments and 49,348 SVS at \$7.46 per share, with the rights to acquire the remaining equity in the future. The Company expects to complete the build-out of the BEYOND/HELLO™ Grover Beach location in Q1 2022. The two dispensaries will be the Company’s second and third operating retail locations in the state.

#### *Finalized Acquisition of Established Nevada Operator*

On April 1, 2021, the Company’s subsidiary, Production Excellence completed the previously announced acquisition of 100% of the equity of FBS Nevada. FBS Nevada holds medical and adult-use cannabis cultivation, processing, and distribution licenses issued by the Nevada Cannabis Control Board and currently operates cultivation, production and distribution facilities in North Las Vegas, Nevada. The Company also owns the real estate associated with FBS Nevada’s facilities in North Las Vegas, Nevada which include two adjacent buildings with cultivation, manufacturing and distribution capabilities.

#### *Exercised Purchase Option to Acquire Pennsylvania Dispensary Solutions*

During the fourth quarter of 2020, the Company exercised and closed on its assignable purchase option to acquire 100 percent of the equity of Pennsylvania Dispensary Solutions (“PADS”), a Pennsylvania medical marijuana dispensary permittee in the Commonwealth’s Northeast region. PADS operates two medical marijuana dispensaries, with the right to operate one additional dispensary in the region. The two operating medical marijuana dispensaries have been rebranded to BEYOND/HELLO™.

#### *Completed Acquisition of Pennsylvania Medical Solutions, LLC*

In August 2020, Jushi acquired 100% of the equity of Pennsylvania Medical Solutions, LLC (“PAMS”), a Pennsylvania grower-processor owned by a subsidiary of Vireo Health International, Inc. The 89,000 sq. ft. cannabis cultivation and processing facility enables wholesale distribution to the 138 dispensaries currently operating, including the Company’s sixteen operational BEYOND/HELLO™ dispensaries.

#### *Use of Proceeds of Prior Financings*

The following table sets out the actual use of proceeds of the financings which have been carried out by the Company:



<b>Financing</b>	<b>Details of Offering</b>	<b>Gross Proceeds</b>	<b>Net Proceeds *</b>	<b>Proposed Use of Net Proceeds</b>	<b>Description of Expenditure</b>	<b>Approximate Use of Net Proceeds (Excluding General Corporate Purposes)</b>	<b>Difference / Remaining To Be Spent **</b>	<b>Note</b>
		(US\$ in millions)	(US\$ in millions)			(US\$ in millions)	(US\$ in millions)	
October 2020	11,500,000 subordinate voting shares at a price of C\$3.55 per share for total gross proceeds of approximately C\$40,825 thousand	\$31.1	\$29.4	For opportunistic acquisitions and for general corporate purposes, including working capital or business development	Opportunistic acquisitions and purchases	\$11.5	\$ (0.1)	(1)
					Other capex and expansion	\$7.7		(2)
					Repayment of acquisition related	\$10.3		(3)
					Total	\$29.5		
January 2021	6,210,000 subordinate voting shares at a price of C\$6.50 per share for total gross proceeds of C\$40,365 thousand	\$31.8	\$29.8	One third of the net proceeds to redeem 10%  General corporate purposes, including working capital or business development	10% Senior Notes redemption	\$4.9	\$6.7	(4)
					Cash capex and expansion	\$16.7		(5)(8)
					Repayment of acquisition related	\$1.5		(6)
					Total	\$23.1		
February 2021	7,475,000 subordinate voting shares at a price of C\$10.00 per share for total gross proceeds of C\$74,750 thousand	\$58.9	\$55.9	For potential strategic transactions (7)  One third of the net proceeds to redeem 10%  General corporate purposes, including working capital or business	Other strategic transactions (7)	\$28.9	\$23.8	(7)(9)
					10% Senior Notes redemption	\$3.2		(4)
					Other capex and expansion	\$—		(8)
					Total	\$32.1		
	<b>Total</b>	<b>\$121.8</b>	<b>\$115.1</b>			<b>\$84.7</b>	<b>\$30.4</b>	<b>(9)**</b>

\* Net proceeds are net of broker, underwriter and legal fees. Does not include other expenses associated with each offering.

\*\* Any variances in use of proceeds to date did not have any impact on the Company's ability to achieve its business objectives and milestones. Use of proceeds does not include cash used in general operating activities.

- (1) Includes the following: (i) \$5.7 million for the PADS acquisition during the fourth quarter of 2020; (ii) \$0.4 million for the buyout of the non-controlling interests of Dalitso in the fourth quarter of 2020; (iii) \$3.6 million for the March 2021 acquisition of 78% of the equity of a retail license holder located in Grover Beach, California; and (iv) the acquisition of three properties in Scranton, Pennsylvania during the first quarter of 2021 for \$1.9 million.
- (2) Includes cash-based capital expenditures for property, plant and equipment (“PP&E”) during the fourth quarter of 2020. Excludes deposits paid or PPE of \$1.6 million.
- (3) Early repayment of acquisition related seller notes during the fourth quarter of 2020: (i) Seller notes from the 2019 acquisition of Dalitso of \$3.8 million repaid in connection with fourth quarter 2020 acquisitions of the non-controlling interests; (ii) Seller notes from the 2019 acquisition of Franklin BioScience – Penn, LLC and its subsidiaries of \$5.0 million repaid early; and (iii) Seller notes for the acquisition of a provisionally licensed medical marijuana processor in Ohio of \$1.5 million.
- (4) Redemptions made pursuant to the terms of the 10% senior notes. Certain note holders waived their rights to the redemptions in January and February 2021.
- (5) Includes purchases during the first quarter of 2021 for: (i) a real estate property in Beja, Portugal for \$0.5 million; and (ii) a real estate property in Hazelton, Pennsylvania for \$0.5 million; and (iii) other cash-based capital expenditures of \$16.7 million for purchases and deposits for PPE during the first half of 2021, excluding the Scranton properties noted in (1) above and the Virginia facility noted in (7) below.
- (6) Repayment of acquisition related seller notes during April 2021 of the seller notes from the 2019 acquisition of FBS Nevada of \$1.5 million.
- (7) Includes: (i) approximately \$22.0 million in May 2021 for acquisition of the 93,000 square foot facility in Prince William County, Virginia operated by a wholly-owned subsidiary of the Company, and properties adjacent to the facility; and (ii) \$1.9 million in May 2021 for the acquisition of OSD; and (iii) \$5.0 million for the acquisition of OhiGrow in July 2021.
- (8) Does not include cash capital expenditures subsequent to June 30, 2021.
- (9) Does not include funds for other potential future strategic transactions, including acquisitions such as \$40 million paid for Nature’s Remedy in September 2021.

#### *Recent Developments Related to COVID-19*

Due to the coronavirus pandemic, the Company implemented new procedures at all operating locations to better protect the health and safety of its employees, medical patients, and customers across its network of dispensaries at the onset of the COVID-19 outbreak. Depending on the location, some of the initiatives include, but are not limited to: reducing the number of point-of-sale registers, restricting the number of people permitted in-store, limiting store hours to those most susceptible, and offering curbside pick-up. The Company has also directed a significant amount of traffic to its recently launched online educational tool and reservation platform, [www.beyond-hello.com](http://www.beyond-hello.com), which enables a medical patient or customer to view real-time pricing and product availability, and reserve products for convenient in-store pick-up at BEYOND/HELLO™ locations across Pennsylvania and Illinois. The Company’s dispensaries remained open throughout the pandemic after receiving the “life-sustaining” business designation in Pennsylvania and the “essential services” designation in Illinois. As a result, the Company experienced no adverse impact to its operations, financial performance, financial condition (including its ability to obtain financing), and cash flows resulting from COVID-19.

#### **REGULATORY FRAMEWORK**

In accordance with Staff Notice 51-352, below is a discussion of the federal and state-level U.S. regulatory regimes in those jurisdictions where Jushi is currently directly or indirectly involved through its subsidiaries. In accordance with Staff Notice 51-352, Jushi will evaluate, monitor and reassess this disclosure, and any related risks, on an ongoing basis and the same will be supplemented and amended and made available to investors in public filings, including in the event of government policy changes or the introduction of new or amended guidance, laws or regulations regarding marijuana regulation. Any non-compliance, citations or notices of violation which may have an impact on Jushi’s licensing, business activities or operations will be promptly disclosed by Jushi.

The following table is intended to assist readers in identifying those parts of this prospectus that address the disclosure expectations outlined in Staff Notice 51-352 for issuers that currently have marijuana-related activities in U.S. States where such activity has been authorized within a state regulatory framework.

Industry Involvement	Specific Disclosure Necessary to Fairly Present all Material Facts, Risks and Uncertainties	Prospectus Cross-Reference
<b>All Issuers with U.S. Marijuana- Related Activities</b>	Describe the nature of the issuer’s involvement in the U.S. marijuana industry and include the disclosures indicated for at least one of the direct, indirect and ancillary industry involvement types noted in this table.	- <i>Jushi Holdings Inc.</i>
	Prominently State that marijuana is illegal under U.S. federal law and that enforcement of relevant laws is a significant risk.	<ul style="list-style-type: none"> <li>- <i>Cover Page (bold typeface)</i></li> <li>- <i>Regulatory Framework – Federal Regulatory Environment – Marijuana</i></li> <li>- <i>Regulatory Framework – Federal Regulatory Environment – Industrial Hemp</i></li> <li>- See “<i>Risk Factors – Risks Related to the Company’s Regulatory Environment – U.S. federal law and enforcement of cannabis and hemp</i>” in the AIF, incorporated by reference herein.</li> </ul>
	Discuss any statements and other available guidance made by federal authorities or prosecutors regarding the risk of enforcement action in any jurisdiction where the issuer conducts U.S. marijuana-related activities.	<ul style="list-style-type: none"> <li>- <i>Cover Page (bold typeface)</i></li> <li>- <i>Regulatory Framework – Federal Regulatory Environment – Marijuana</i></li> <li>- <i>Regulatory Framework – Federal Regulatory Environment – Industrial Hemp</i></li> <li>- <i>Regulatory Framework – State Regulatory Environment – California</i></li> <li>- <i>Regulatory Framework – State Regulatory Environment – Illinois</i></li> <li>- <i>Regulatory Framework – State Regulatory Environment – Pennsylvania</i></li> <li>- <i>Regulatory Framework – State Regulatory Environment – Virginia</i></li> <li>- <i>Regulatory Framework – State Regulatory Environment – Nevada</i></li> <li>- <i>Regulatory Framework – State Regulatory Environment – Ohio</i></li> </ul>

Industry Involvement	Specific Disclosure Necessary to Fairly Present all Material Facts, Risks and Uncertainties	Prospectus Cross-Reference
	<p>Outline related risks including, among others, the risk that third-party service providers could suspend or withdraw services and the risk that regulatory bodies could impose certain restrictions on the issuer’s ability to operate in the U.S.</p>	<ul style="list-style-type: none"> <li>- <i>Cover Page (bold typeface)</i></li> <li>- <i>Regulatory Framework – Federal Regulatory Environment – Marijuana</i></li> <li>- <i>Regulatory Framework – Federal Regulatory Environment – Industrial Hemp</i></li> <li>- See “<i>Risk Factors – Risks Related to the Company’s Regulatory Environment</i>” in the AIF, incorporated by reference herein.</li> <li>- See “<i>Risk Factors – Risks Related to the Company’s Business and Industry – U.S. border officials could deny entry into the U.S. to employees of, or investors in companies with, cannabis operations in the U.S.</i>” in the AIF, incorporated by reference herein.</li> <li>- See “<i>Risk Factors – Risks Related to the Company’s Business and Industry – Risks related to being deemed an investment company under the U.S. Investment Company Act</i>” in the AIF, incorporated by reference herein.</li> <li>- See “<i>Risk Factors – Risks Related to the Company’s Business and Industry – Risks associated with insurance in the cannabis industry</i>” in the AIF, incorporated by reference herein.</li> <li>- See “<i>Risk Factors – Risks Related to the Company’s Business and Industry – Legality of contracts</i>” in the AIF, incorporated by reference herein.</li> </ul>
	<p>Given the illegality of marijuana under U.S. federal law, discuss the issuer’s ability to access both public and private capital and indicate what financing options are / are not available in order to support continuing operations.</p>	<ul style="list-style-type: none"> <li>- See “<i>Risk Factors – Risks Related to the Company’s Regulatory Environment – Difficulty in accessing services of banks and/or other financial institutions</i>” in the AIF, incorporated by reference herein.</li> <li>- See “<i>Risk Factors – Risks Related to the Company’s Regulatory Environment – Difficulty accessing public and private capital</i>” in the AIF, incorporated by reference herein.</li> <li>- See “<i>Risk Factors – Risks Related to the Company’s Regulatory Environment – Risks related to U.S. anti-money-laundering laws and regulations</i>” in the AIF, incorporated by reference herein.</li> </ul>
	<p>Quantify the issuer’s balance sheet and operating statement exposure to U.S. marijuana related activities.</p>	<p>- <i>Jushi Holdings Inc.</i></p>

<b>Industry Involvement</b>	<b>Specific Disclosure Necessary to Fairly Present all Material Facts, Risks and Uncertainties</b>	<b>Prospectus Cross-Reference</b>
	Disclose if legal advice has not been obtained, either in the form of a legal opinion or otherwise, regarding (a) compliance with applicable State regulatory frameworks and (b) potential exposure and implications arising from U.S. federal law.	The Company has received and continues to receive legal input regarding (a) compliance with applicable state regulatory frameworks and (b) potential exposure and implications arising from U.S. federal law in certain respects. The Company receives such advice on an ongoing basis but does not have a formal legal opinion on such matters.
<b>U.S. Marijuana Issuers with direct involvement in cultivation or distribution</b>	Outline the regulations for U.S. States in which the issuer operates and confirm how the issuer complies with applicable licensing requirements and the regulatory framework enacted by the applicable U.S. State.	<ul style="list-style-type: none"> <li>- <i>Regulatory Framework – State Regulatory Environment</i></li> <li>- <i>Regulatory Framework – State Regulatory Environment – California</i></li> <li>- <i>Regulatory Framework – State Regulatory Environment – Illinois</i></li> <li>- <i>Regulatory Framework – State Regulatory Environment – Pennsylvania</i></li> <li>- <i>Regulatory Framework – State Regulatory Environment – Virginia</i></li> <li>- <i>Regulatory Framework – Compliance</i></li> </ul>
	Discuss the issuer’s program for monitoring compliance with U.S. State law on an ongoing basis, outline internal compliance procedures and provide a positive statement indicating that the issuer is in compliance with U.S. State law and the related licensing framework. Promptly disclose any non-compliance, citations or notices of violation which may have an impact on the issuer’s license, business activities or operations.	<ul style="list-style-type: none"> <li>- <i>Regulatory Framework – State Regulatory Environment</i></li> <li>- <i>Regulatory Framework – State Regulatory Environment – California</i></li> <li>- <i>Regulatory Framework – State Regulatory Environment – Illinois</i></li> <li>- <i>Regulatory Framework – State Regulatory Environment – Pennsylvania</i></li> <li>- <i>Regulatory Framework – State Regulatory Environment – Virginia</i></li> <li>- <i>Regulatory Framework – Compliance</i></li> </ul>
<b>U.S. Marijuana Issuers with indirect involvement in cultivation or distribution</b>	Outline the regulations for U.S. states in which the issuer’s investee(s) operate.	<ul style="list-style-type: none"> <li>- <i>Regulatory Framework – State Regulatory Environment</i></li> <li>- <i>Regulatory Framework – State Regulatory Environment – Nevada</i></li> <li>- <i>Regulatory Framework – State Regulatory Environment – Ohio</i></li> <li>- <i>Regulatory Framework – Compliance</i></li> </ul>
	Provide reasonable assurance, through either positive or negative statements, that the investee’s business is in compliance with applicable licensing requirements and the regulatory framework enacted by the applicable U.S. state. Promptly disclose any non-compliance, citations or notices of violation, of which the issuer is aware, that may have an impact on the investee’s license, business activities or operations.	<ul style="list-style-type: none"> <li>- <i>Regulatory Framework – State Regulatory Environment</i></li> <li>- <i>Regulatory Framework – State Regulatory Environment – Nevada</i></li> <li>- <i>Regulatory Framework – State Regulatory Environment – Ohio</i></li> <li>- <i>Regulatory Framework – Compliance</i></li> </ul>

<b>Industry Involvement</b>	<b>Specific Disclosure Necessary to Fairly Present all Material Facts, Risks and Uncertainties</b>	<b>Prospectus Cross-Reference</b>
<b>U.S. Marijuana Issuers with material ancillary involvement</b>	Provide reasonable assurance, through either positive or negative statements, that the applicable customer's or investee's business is in compliance with applicable licensing requirements and the regulatory framework enacted by the applicable U.S. state.	Not applicable.

Jushi currently operates or reasonably expects to be operating within the next six months, directly or indirectly, the cultivation or distribution of marijuana in the United States as more specifically described below:

<b>Name</b>	<b>State</b>	<b>Ownership<sup>1</sup></b>	<b>Nature of Industry Involvement<sup>2</sup></b>	<b>Permitted No. of Facilities</b>	<b>Operational</b>
Beyond Hello IL, LLC	IL	100% equity ownership	Direct – adult use and medical cannabis sales	4 dispensaries	4 dispensaries
Franklin Bioscience – Penn, LLC <sup>3</sup>	PA	100% equity ownership	Direct – medical cannabis sales	12 dispensaries	12 dispensaries
Agape Total Health Care Inc	PA	100% equity ownership	Direct – medical cannabis sales	3 dispensaries	2 dispensaries
Pennsylvania Medical Solutions, LLC	PA	100% equity ownership	Direct – medical cannabis cultivation and processing	1 cultivation 1 processing	1 cultivation 1 processing
Pennsylvania Dispensary Solutions, LLC	PA	100% equity ownership	Direct – medical cannabis sales	3 dispensaries	2 dispensaries
Dalitso LLC	VA	100% equity ownership	Direct – medical cannabis cultivation, processing and sales	6 dispensaries 1 cultivation 1 processing	2 dispensaries 1 cultivation 1 processing
GSG SBCA, Inc.	CA	100% equity ownership	Direct – adult use and medical cannabis sales	1 dispensary	1 dispensary
Milkman, LLC	CA	~78% equity ownership <sup>5</sup>	Direct – adult use and medical cannabis sales	1 dispensary	Anticipated Q1, 2022
Organic Solutions of the Desert, LLC	CA	100% equity ownership	Direct – adult use and medical cannabis sales	1 dispensary	1 dispensary
Franklin Bioscience NV, LLC	NV	100% equity ownership	Direct – adult use and medical cannabis cultivation and processing	1 cultivation 1 processing	1 cultivation 1 processing
Franklin Bioscience OH, LLC	OH	100% equity ownership	Direct – medical cannabis processing	1 processing	1 processing
OhiGrow LLC	OH	100% equity ownership	Direct – medical cannabis cultivation	1 cultivation	1 cultivation
Jushi MA, Inc.	MA	100% equity ownership	Direct – adult use and medical cultivation, processing and sales	2 dispensaries 1 cultivation 1 processing	2 dispensaries 1 cultivation 1 processing
The Apothecarium	NV	Definitive Agreement for 100% equity ownership	Direct – adult use and medical cannabis sales	1 dispensary	1 dispensary

Name	State	Ownership <sup>1</sup>	Nature of Industry Involvement <sup>2</sup>	Permitted No. of Facilities	Operational
NuLeaf, Inc.	NV	Definitive Agreement for 100% equity ownership	Direct – adult use and medical cultivation, processing and sales	3 dispensaries 1 cultivation 1 processing	2 dispensaries 1 cultivation 1 processing

Notes:

1. Ownership may be direct or indirect through one or more additional subsidiaries. Please refer to the Company’s organizational chart above or in the AIF for additional information.
2. As defined in Staff Notice 51-352, direct industry involvement arises when an issuer, or a subsidiary that it controls, is directly engaged in the cultivation or distribution of marijuana in accordance with a U.S. state license.
3. Though its acquisition of Franklin Bioscience – Penn, LLC, the Company also acquired all the membership interests of FBS Penn’s wholly-owned subsidiaries Franklin Bioscience – NE, LLC, Franklin Bioscience – SE, LLC and Franklin Bioscience – SW, LLC. These entities collectively hold one Phase I and three Phase II dispensary permits in the Commonwealth of Pennsylvania.
4. The Company was chosen as one of three applicants to proceed with the application process. The Company expects the location to be operational by 2Q 2022, however, because the application process is still ongoing for the applicants selected to move forward, the Company cannot say with any reasonable degree of certainty if/when the Company will have an operational dispensary.
5. The Company, through a subsidiary, has the right to acquire the remaining ~22% equity ownership at any time in the Company’s sole discretion.

## Federal Regulatory Environment

### *Marijuana*

Under U.S. federal law, marijuana is classified as a Schedule I drug. The CSA has five different tiers or schedules. A Schedule I drug means the Drug Enforcement Agency considers it to have a high potential for abuse, no accepted medical treatment, and lack of accepted safety for the use of it even under medical supervision. Other Schedule I drugs include heroin, LSD and ecstasy. In June 2018, the FDA approved Epidiolex, a purified form of CBD derived from the marijuana plant and used to treat two rare, intractable forms of epilepsy. The Company believes marijuana’s categorization as a Schedule I drug is thus not reflective of the medicinal properties of marijuana or the public perception thereof, and numerous studies show cannabis is not able to be abused in the same way as other Schedule I drugs, has medicinal properties, and can be safely administered. In this respect, 36 states, the District of Columbia, Guam, Puerto Rico and the U.S. Virgin Islands have passed laws authorizing comprehensive, publicly available medical marijuana programs, and 16 of those states and the District of Columbia have passed laws legalizing marijuana for adult use.

In an effort to address incongruities between marijuana prohibition under the CSA and legalization under various state laws, the federal government issued guidance to law enforcement agencies and financial institutions during the Obama Administration through DOJ memorandum. The most recent such memorandum is a DOJ memorandum issued by Deputy Attorney General James Cole in 2013 (the “**Cole Memo**”). The Cole Memo provided guidance to federal enforcement agencies as to how they should prioritize civil enforcement, criminal investigations and prosecutions regarding marijuana in all states. The Cole Memo shielded individuals and businesses participating in state-legal marijuana operations from prosecution under federal drugs laws, excepting marijuana-related conduct that fell into one of the following enumerated prosecution priorities:

1. Preventing the distribution of marijuana to minors;
2. Preventing revenue from the sale of marijuana from going to criminal enterprises, gangs and cartels;
3. Preventing the diversion of marijuana from states where it is legal under state law in some form to other states;
4. Preventing the state-authorized marijuana activity from being used as a cover or pretext for the trafficking of other illegal drugs or other illegal activity;
5. Preventing the violence and the use of firearms in the cultivation and distribution of marijuana;

6. Preventing the drugged driving and the exacerbation of other adverse public health consequences associated with marijuana use;
7. Preventing the growing of marijuana on public lands and the attendant public safety and environmental dangers posed by marijuana production on public lands; and
8. Preventing marijuana possession or use on federal property.

On January 4, 2018, then U.S. Attorney General Jeff Sessions issued the Sessions Memo, which rescinded the Cole Memo. Rather than provide nationwide guidance respecting marijuana-related crimes in jurisdictions where certain marijuana activity was legal under state law, the Sessions Memo instructs that “[i]n deciding which marijuana activities to prosecute... with the DOJ’s finite resources, prosecutors should follow the well-established principles that govern all federal prosecutions.” Namely, these include the seriousness of the offense, history of criminal activity, deterrent effect of prosecution, the interests of victims, and other principles. Former U.S. Attorney General Jeff Sessions resigned in November 2018 and was replaced by Matthew Whitaker as interim Attorney General. In February 2019, William Barr was sworn in as Attorney General. Mr. Barr resigned as Attorney General on December 23, 2020 and Merrick Garland was sworn in as Attorney General in March 2021. It is unclear what impact, if any, the new administration will have on U.S. federal government enforcement policy on cannabis.

Despite rescission of the Cole Memo, the Company remains mindful of the common-sense prosecution priorities set forth therein and has not modified policies or procedures intended to support its underlying safety-focused intent. To this end, the Company and its operating subsidiaries adhere to industry best practices for operations, mandate strict compliance with applicable state and local laws, rules, regulations, ordinances, guidance and like authority, implement procedures designed to ensure operations do not exceed what is authorized under applicable licenses, perform stringent diligence on third-parties with whom it does business, performs background checks on employees, and maintains state-of-the-art seed-to-sale inventory tracking and other security infrastructure. Regular reviews of the foregoing and related operations, premises, documentation and the like are performed to ensure compliance with the Company’s safety, security and compliance standards.

Due to the CSA categorization of marijuana as a Schedule I drug, U.S. federal law makes it illegal for financial institutions that depend on the Federal Reserve’s money transfer system to take any proceeds from marijuana sales as deposits. Banks and other financial institutions could be prosecuted and possibly convicted of money laundering for providing services to cannabis businesses under the Bank Secrecy Act. Under U.S. federal law, banks or other financial institutions that provide a cannabis business with a checking account, debit or credit card, small business loan, or any other service could be found guilty of money laundering or conspiracy.

While there has been no change in U.S. federal banking laws to account for the trend towards legalizing medical and adult use marijuana by U.S. states, the Department of Treasury Financial Crimes Enforcement Network (“**FinCEN**”) has issued guidance in 2014 to prosecutors handling money laundering and other financial crimes advising them not to focus enforcement efforts on banks and other financial institutions servicing marijuana-related businesses so long as such businesses are legally operating under state law and not engaging in conduct within the scope of a Cole Memo prosecution priority (such as keeping marijuana away from minors and out of the hands of organized crime). The 2014 FinCEN guidance also clarifies how financial institutions can provide services to marijuana-related businesses consistent with their Bank Secrecy Act obligations, including thorough customer due diligence, but makes it clear that they are doing so at their own risk. The customer due diligence steps include:

1. Verifying with the appropriate state authorities whether the business is duly licensed and registered;
2. Reviewing the license application (and related documentation) submitted by the business for obtaining a state license to operate its marijuana-related business;
3. Requesting from state licensing and enforcement authorities available information about the business and related parties;
4. Developing an understanding of the normal and expected activity for the business, including the types of products to be sold and the type of customers to be served (e.g., medical versus adult use customers);



5. Ongoing monitoring of publicly available sources for adverse information about the business and related parties;
6. Ongoing monitoring for suspicious activity, including for any of the red flags described in this guidance; and
7. Refreshing information obtained as part of customer due diligence on a periodic basis and commensurate with the risk.

With respect to information regarding state licensure obtained in connection with such customer due diligence, the 2014 FinCEN guidance allows financial institutions to reasonably rely on the accuracy of information provided by state licensing authorities where states make such information available.

Unlike the Cole Memo, 2014 FinCEN guidance remains effective as of the date of this Prospectus, and Secretary Mnuchin has publicly voiced his intent to leave such guidance in force and effect. Despite FinCEN's guidance, most banks and other financial institutions are still unwilling to provide banking or other financial services to marijuana businesses resulting in largely cash-based operations. While the FinCEN guidance decreased some risk for banks and financial institutions that accept marijuana business, it has not increased the industry's access to banking services because financial institutions are required to perform extensive, continuous customer diligence respecting marijuana customers and are not immune from prosecution based transacting business with such customers. In fact, some banks that had been servicing marijuana businesses have been closing the marijuana businesses' accounts and are now refusing to open accounts for new marijuana businesses due to cost, risk, or both.

Although the Cole Memo was rescinded and FinCEN's guidance has not made financial services widely available to legal marijuana businesses, a key legislative safeguard for the medical cannabis industry remains in place. Specifically, certain temporary federal legislative enactments that protect the medical marijuana industry have also been in effect. For instance, certain marijuana businesses receive a measure of protection from federal prosecution by operation of a temporary appropriations measures that has been enacted into law as an amendment or "rider" to federal spending bills passed by Congress and signed by both Presidents Obama and Trump. First adopted in the Appropriations Act of 2015, Congress has since included in successive budgets a "rider" that prohibits the DOJ from expending any funds to enforce any law that interferes with a state's implementation of its own medical marijuana laws. The rider is known as the "Rohrbacher-Farr" Amendment after its original lead sponsors (it is also sometimes referred to as the "Rohrbacher-Blumenauer" Amendment or the Joyce-Leahy Amendment, but it is referred to in this Prospectus as "**Rohrbacher-Farr**").

Though there is no guarantee the Biden Administration or a future Administration will not change relevant federal policy, as a practical matter, the legal marijuana industry has not seen a material change in federal enforcement activities since rescission of the Cole Memo. However, it is possible existing appropriation rider protection and existing prosecutorial discretion not to enforce federal drugs laws against state-legal marijuana business could change at any time.

On July 14, 2021, Senate Majority Leader Chuck Schumer (D-NY) and Senators Cory Booker (D-NJ) and Ron Wyden (D-OR) released a discussion draft of their co-sponsored "Cannabis Administration and Opportunity Act" bill ("CAOA"). This proposed legislation would legalize and regulate cannabis in the U.S. at the federal level. The sponsoring offices have invited the public to comment on the discussion draft through September 1. While the goals set forth in the CAO A are admirable, the discussion draft remains subject to considerable revision, and it remains unclear whether or to what extent all or portions of it may garner enough support to pass.

Finally, revenue from the Company's marijuana operations is subject to Section 280E of the Internal Revenue Service Code (the "**Code**"). Section 280E of the Code prohibits marijuana businesses from deducting ordinary and necessary business expenses, resulting in a materially higher effective federal income tax rate than businesses in other industries. Therefore, businesses in the legal cannabis industry may be less profitable than they would otherwise be in a different industry.

### *Industrial Hemp*

On December 20, 2018, the Agricultural Improvement Act of 2018 (the "**Farm Bill**") became law in the United States. Under the Farm Bill, industrial and commercial hemp is no longer to be classified as a Schedule I controlled substance in the United States. Hemp

includes the plant *cannabis sativa* L and any part of that plant, including seeds, derivatives, extracts, cannabinoids and isomers. To qualify under the Farm Bill, hemp must contain no more than 0.3 % of delta-9-tetrahydrocannabinol (“**THC**”). The Farm Bill explicitly allows interstate commerce of hemp which will enable the transportation and shipment of hemp across state lines, thus, the Farm Bill fundamentally changed how hemp and hemp-derived products (such as those containing CBD extracted from hemp) are regulated in the U.S.

## **State Regulatory Environment**

The following sections describe the legal and regulatory landscape in states where the Company subsidiaries currently operate or intend to operate in the near-term future. While the Company actively works to ensure all of its operations are fully compliant with applicable state and local laws, rules, regulations, licensing requirements, ordinances and other applicable governing authority, the rules and regulations as outlined below are not a comprehensive representation of all the rules that the Company and its subsidiaries are required to follow in each applicable state. Further, for reasons described above and based on the risks more fully described in the “Risk Factors” section in the AIF, incorporated by reference herein, there are significant risks associated with the Company’s business and readers are strongly encouraged to carefully review and consider all of the risks set forth and described herein.

### *Common State Law Requirements*

Although each state has its own laws and regulations regarding the operation of cannabis businesses, certain of the laws and regulations are consistent across jurisdictions. For example, to operate legally under state laws, marijuana businesses must typically obtain a license from the state. In some states, local marijuana-specific approvals are also required. In these jurisdictions, local governments may be authorized to prohibit or otherwise impose material restrictions on cannabis operations, including by proscribing rules limiting the type(s) and/or number of license(s) allowed (such authority is in addition to ordinary and customary building, fire and land use regulatory control). In many cases, securing local approval(s) is a prerequisite to state issuance of a full or unconditional license.

License application and renewal processes are unique to each state, and as applicable, each locality. However, generally each state’s application process requires a comprehensive criminal history disclosure of key individuals (such as major shareholders, directors, officers, certain managers and other individuals to the extent they are known at the time of application (“**Key Individuals**”)), and as to the applicant entity (and often its affiliates) and such Key Individuals, marijuana licensing and compliance history, financial and personal disclosures, detailed operating plans, facility information (often including drawing and plans), security-related plans, an affirmative obligation to report changes to or deviations from information set forth in the application, and other information designed to ensure only reputable, law-abiding individuals and entities ready, willing and able to operate in compliance with applicable state laws, rules and regulations are awarded marijuana licenses.

Applicants for marijuana licenses are commonly required to submit standard operating procedures (“**SOPs**”) describing how the proposed business will secure its facility(ies), manage inventory, comply with inventory tracking requirements and other reporting obligations, effectuate safe marijuana transactions, handle waste, train employees, implement quality control measures, and perform other tasks necessary and appropriate to operate in a safe, secure, and compliant manner. SOPs submitted as part of licensing applications are typically reviewed, evaluated and ultimately approved by regulators, and must generally remain in force and effect after issuance of a license. Any material change to SOPs requires prior written regulatory approval in nearly all cases. Finally, marijuana operations are continuously subject to inspection, with or without notice, by cannabis regulators and certain authorized law enforcement agencies.

### *California*

#### California Regulatory Landscape

In 1996, California was the first state to legalize medical marijuana through Proposition 215, the Compassionate Use Act (“**CUA**”). This legalized the use, possession and cultivation of medical marijuana by patients with a physician recommendation for treatment of cancer,

anorexia, AIDS, chronic pain, spasticity, glaucoma, arthritis, migraine or any other illness for which marijuana provides relief. In 2003, Senate Bill 420 was signed into law establishing an optional identification card system for medical marijuana patients.

In September 2015, the California legislature passed three bills collectively known as Medical Cannabis Regulation and Safety Act (“MCRSA”). MCRSA established a licensing and regulatory framework for medical marijuana businesses in California. The system created multiple license types for dispensaries, infused products manufacturers, cultivation facilities, testing laboratories, transportation companies, and distributors. Edible infused product manufacturers would require either volatile solvent or non-volatile solvent manufacturing licenses depending on their specific extraction methodology. Multiple agencies would oversee different aspects of the program and businesses would require a state license and local approval to operate. However, in November 2016, voters in California overwhelmingly passed Proposition 64, the Adult Use of Marijuana Act (“AUMA”) creating an adult use marijuana program for adult use 21 years of age or older. AUMA had some conflicting provisions with MCRSA, so in June 2017, the California State Legislature passed Senate Bill No. 94, known as the Medical and Adult-Use Cannabis Regulation and Safety Act (“MAUCRSA”), which amalgamates MCRSA and AUMA to provide a set of regulations to govern medical and adult use licensing regime for cannabis businesses in the State of California. MAUCRSA went into effect on January 1, 2018. The Bureau of Cannabis Control (“BCC”), the California Department of Food and Agriculture, the California Department of Public Health (“DPH”), and the California Department of Tax and Fee Administration all have some degree of regulatory responsibility for marijuana operations. MAUCRSA became effective on January 1, 2018.

In July 2019, California enacted A.B. 97. In relevant part, this bill authorizes licensing authorities to issue citations and fines to a licensee or an unlicensed person who violates MAUCRSA. The maximum fine is \$5,000 per violation for licensees and \$30,000 per violation for unlicensed persons. Each day of a violation constitutes a separate violation. A.B. 97 also repeals a prior requirement that an applicant for a provisional license first hold a temporary license. The bill also requires applicants for provisional licenses to submit evidence of compliance with the California Environmental Quality Act, limits the validity of a provisional license to 12 months with subsequent renewals as approved by the relevant licensing authority, and allows licensing authorities to revoke provisional licenses for failing to diligently pursue final licensure. Finally, the bill requires the DPH to establish a certification program for manufactured cannabis products comparable to the National Organic Program and the California Organic Food and Farming Act. In October 2019, California enacted A.B. 1529. This bill mandates that all cannabis vaping cartridges and cannabis vaporizers must include a universal symbol identifying the product as a vaping product.

In order to legally operate a medical or adult use cannabis business in California, the operator must have both a local and state license. This requires license holders to operate in cities with marijuana licensing programs. Therefore, cities in California are allowed to determine the number of licenses they will issue to marijuana operators or can choose to outright ban marijuana.

To the knowledge of management of the Company, there have not been any statements or guidance made by federal authorities or prosecutors regarding the risk of enforcement action specific to the State of California. For more information on federal enforcement and the risks associated with the U.S. cannabis regulatory environment generally, see, without limitation, “*Risk Factors – Risks Related to the Regulatory Environment – U.S. federal law and enforcement pertaining to cannabis and hemp*” and “*Risk Factors – Risks Related to the Regulatory Environment – Risks related to heightened scrutiny by regulatory authorities*”.

### California Licenses

The Company, through its subsidiaries, currently holds three (3) medical and adult use cannabis business licenses to operate dispensaries in Santa Barbara, California, Palm Springs, California and Grover Beach, California. The Company’s dispensaries located in Santa Barbara and Palm Springs are currently operational, and the Company estimates its dispensary in Grover Beach will be operational in the first quarter of 2022. In addition, one of the Company’s subsidiaries entered into a long-term lease agreement for a bespoke, ground-up build in Culver City. The Company also received approval to move forward in the merit-based application process as one of three selected applicants for a storefront retail (and ancillary delivery) permit in Culver City, California, and the Company estimates the Culver City dispensary will be operational towards the end of the second quarter of 2022. Furthermore, the Company, through subsidiaries, has

applied (or intends to apply) to State and local licensing authorities for new adult use and/or medical storefront licenses in limited license markets, and particularly in Southern California, or is pursuing change of ownership and/or control approval for existing enterprises in similar jurisdictions, including Culver City and Imperial Beach.

In California, State and local medical and adult use cannabis business licenses are renewed annually. Each year, licensees are required to submit a renewal application per guidelines published by BCC. While renewals are annual, there is no limit to the number of renewals a licensee may obtain. Assuming requisite renewal fees are paid, renewal applications are submitted in a timely manner, the establishment has not been cited for material violations, renewal applicants can anticipate approval in the ordinary course of business. However, any unexpected denials, delays or costs associated with a licensing renewal could impede planned operations and may have a material adverse effect on the Company's business, financial condition, results of operations or prospects.

### License and Regulations

Adult use retailer licenses permit the sale of cannabis and cannabis products to any individual age 21 years of age or older who do not possess a physician's recommendation. Thus, should a Company subsidiary be awarded a license, it will be authorized to sell cannabis and cannabis products to adults over the age of 21 subject to customer presentation of a valid government-issued photo ID. As with all state-legal marijuana programs, only cannabis grown in California can be sold in California and retail licensees may only sell cannabis products procured from a duly licensed distributor or licensed microbusiness authorized to engage in distribution. All cannabis products are subject to appropriate laboratory testing, packaging, labeling, and tracking requirements. Upon receipt, licensed retailers must confirm cannabis products have not expired, are properly packaged and bear batch numbers which correspond with tracking and laboratory analysis documentation. Cannabis and cannabis products may only be displayed for inspection and sale on the sales floor of the facility, and may only be removed from packaging for customer inspection if placed in a proper container provided by the licensee and not readily accessible without the assistance of licensee staff (who must remain with the customer throughout such inspection). Any cannabis product displayed or inspected in this manner must be destroyed following inspection or when no longer being using for display purposes and may not be sold or consumed. Retailers may only provide free cannabis products under certain, very limited circumstances and may not sell other goods, with the exception of cannabis accessories and branded merchandise.

Medicinal retailer licenses permit the sale of medicinal cannabis and cannabis products for use pursuant to the CUA, found at Section 11362.5 of the Health and Safety Code, by a medicinal cannabis patient in California who possesses a physician's recommendation. Only certified physicians may provide medicinal marijuana recommendations. The Company maintains an open, transparent and collaborative relationship with the BCC and local-level cannabis regulators.

### Reporting Requirements

The state of California has selected Franwell Inc.'s METRC solution ("METRC") as the State's track-and trace ("T&T") system used to track commercial cannabis activity and movement along the legal supply chain. While METRC is interoperable with other third-party systems via application programming interface, only licensees have access to METRC itself.

### Operating Procedure Requirements

Licensing applicants must submit standard operating procedures ("SOPs") describing how the operator will, among other requirements, secure the facility, manage inventory, comply with seed-to-sale requirements, dispense cannabis, and handle waste. Once SOPs approved by the governing regulating body(ies), licensees must provide their employees with SOP training and seek written approval from governing regulating bodies before materially changing their SOPs.

### Site-Visits & Inspections

The BCC and its authorized representatives have broad authority, with or without notice, to inspect licensed cannabis operations, including premises, facilities, equipment, books and records (which may be copied, and such copies retained), and cannabis products. Failure to grant BCC representatives full and immediate access to facilities, property, and premises, and to cooperate with inspections and investigations may result in disciplinary action. Laws and regulations enacted by many local jurisdictions grant local cannabis governing bodies and law enforcement agencies similar inspection authority.

### Storage and Security

To ensure the safety and security of cannabis facilities and operations, the BCC requires licensees to:

1. Maintain a fully operational security alarm system;
2. Contract for security guard services;
3. Maintain a video surveillance system that records continuously 24 hours a day;
4. Ensure adequate lighting is installed and maintained on and about licensed facilities;
5. Only transact business during authorized hours of operations;
6. Store cannabis and cannabis product only in areas identified for such purposes on drawings submitted to and approved by the State in connection with licensing;
7. Store all cannabis and cannabis products in a secured, locked room or a vault;
8. Report to local law enforcement within 24 hours after being notified or becoming aware of the theft, diversion, or loss of cannabis; and
9. To the extent applicable based on a licensee's authorized scope of operations, ensure the safe transport of cannabis and cannabis products between licensed facilities, maintain a delivery manifest in any vehicle transporting cannabis and cannabis products. Only vehicles registered with the BCC, that meet BCC distribution requirements, are to be used to transport cannabis and cannabis products.

In addition to BCC storage and security requirements, local jurisdictions may have additional storage and security requirements. Such requirements, to the extent they exist, may vary from one locality to another.

The Company is in compliance with the laws of the State of California and the related cannabis licensing framework. There are no current incidences of non-compliance, citations or notices of violation which are outstanding which may have an impact on the Company's licenses, business activities or operations in the State of California. Notwithstanding the foregoing, like most businesses, the Company may from time-to-time experience incidences of non-compliance with applicable rules and regulations in the states in which the Company operates, including the State of California, and such non-compliance may have an impact on the Company's licenses, business activities or operations in the applicable state. However, the Company takes steps to minimize, disclose and remedy all incidences of non-compliance which may have an impact on the Company's licenses, business activities or operations in all states in which the Company operates, including the State of California. See "Regulatory Framework – Compliance".

### *Illinois*

#### Illinois Regulatory Landscape

In January 2014, the Compassionate Use of Medical Cannabis Pilot Program Act, which allows individuals diagnosed with certain debilitating or "qualified" medical conditions to access medical marijuana, became effective. There are over 35 qualifying conditions as part of the medical program, including epilepsy, traumatic brain injury, and post-traumatic stress disorder. In January 2019, the Illinois

Department of Health launched the Opioid Alternative Pilot Program, that allows individuals who have/ could receive a prescription for opioids to access to medical marijuana.

In June 2019, Illinois legalized adult use marijuana pursuant to the Cannabis Regulation and Tax Act (the “**IL Act**”). Effective January 1, 2020, Illinois residents 21 years of age and older may possess up to 30 grams of marijuana (non-residents may possess up to 15 grams). The IL Act authorizes the IDFPR to issue up to 75 Conditional Adult Use Dispensing Organization licenses before May 1, 2020 and an additional 110 conditional licenses during 2021 (no person may hold a financial interest in more than 10 Dispensing Organizations). Existing medical dispensaries were able to apply for an “Early Approval Adult Use Dispensing Organization License” to serve adult users at an existing medical dispensary or at a secondary site. The IDFPR has granted approximately 48 Early Approval Adult Use Dispensing Organization licenses to date. The IDFPR also held an application period for Conditional Adult Use Cannabis Dispensary Licenses from December 10, 2019 through January 2, 2020. Licenses from this round of applications have not yet been awarded, and the anticipated award date has been delayed due to the COVID-19 pandemic and challenges to the application process.

The Illinois Department of Agriculture (the “**IL Ag. Department**”) is authorized to make up to 30 cultivation center licenses available between the state’s medical and adult-use programs. As with existing medical dispensaries, existing cultivation centers were able to apply for an “Early Approval Adult Use Cultivation Center License.” The IL Ag. Department issued approximately 21 Early Approval Adult Use Cultivation Centers to date. No person can hold a financial interest in more than three cultivation centers, and the centers are limited to 210,000 square feet of canopy space. Cultivation centers are also prohibited from discriminating in price when selling to dispensaries, craft growers, or infuser organizations. The IL Ag. Department is also permitted to license up to 40 craft growers and 40 infuser organizations by July 1, 2020 (license awards will likely be delayed due to the COVID-19 pandemic) and another 60 of each license type by the end of 2021. The IL Ag. Department recently closed an application period for craft growers, infusers, and cannabis transporters.

The IL Act imposes several operational requirements on adult-use licensees and requires prospective licensees to demonstrate their plans to comply with such requirements. For example, applicants for dispensary licenses must include an employee training plan, a security plan, recordkeeping and inventory plans, a quality control plan, and an operating plan. Applicants for craft growers must similarly submit a facility plan, an employee training plan, a security a record keeping plan, a cultivation plan, a product safety and labeling plan, a business plan, an environmental plan, and more.

Licensees must establish methods for identifying, recording, and reporting diversion, theft, or loss, correcting inventory errors, and complying with product recalls. Licensees also must comply with detailed inventory, storage, and security requirements. Cultivation licenses are subject to similar operational requirements, such as complying with detailed security and storage requirements, and must also establish plans to address energy, water, and waste-management needs. Dispensary licenses will be renewed bi-annually, and cultivation licenses, craft grower licenses, infuser organization licenses, and transporter licenses will be renewed annually.

The IL Ag. Department is authorized to promulgate, and has promulgated, regulations for cultivators, craft growers, infuser organizations, and transporting organizations. The IDFPR is authorized to regulate dispensaries but has not yet issued adult use regulations. Therefore, currently licensed adult use retail operations are governed by the IL Act and adult use retail applications submitted during the application window which closed on January 2, 2020 will be evaluated under and in accordance with the IL Act.

The Company, through its subsidiaries in the State of Illinois, is in compliance with applicable licensing in the State of Illinois.

To the knowledge of management of the Company, there have not been any statements or guidance made by federal authorities or prosecutors regarding the risk of enforcement action specific to the State of Illinois. For more information on federal enforcement and the risks associated with the U.S. cannabis regulatory environment generally, see without limitation, “*Risk Factors – Risks Related to the Regulatory Environment – U.S. federal law and enforcement pertaining to cannabis and hemp*” and “*Risk Factors – Risks Related to the Regulatory Environment – Risks related to heightened scrutiny by regulatory authorities*”.

## Illinois Licenses

As of the date of this Prospectus, the Company operates four adult use (with two co-located medical) cannabis dispensaries in the State of Illinois, located in or around the cities of Sauget, Normal and Bloomington. All four dispensaries are operated under the Company's BEYOND/HELLO™ brand.

On August 19, 2021, Jushi's partner Northern Cardinal Ventures, LLC was awarded a conditional retail dispensary license in Illinois via the state's lottery process. The dispensary location is designated for the Peoria Bureau of Labor Statistics region in Illinois and will be BEYOND/HELLO's fifth location in the state.

All medical and adult use dispensing organizations licensed by IDFPR hold registration certificates valid for a period of one year and subject to annual renewals after required fees are paid and the organization remains in good standing. Renewals are generally communicated by IDFPR through email and include a renewal form. Provided that the requisite renewal fees are paid, the renewal application is submitted in a timely manner, and there are no material violations noted against the applicable license, Beyond Hello IL, LLC ("BHIL") would expect to receive the applicable renewed license in the ordinary course of business. Any unexpected delays or costs associated with the licensing renewal process could impede the ongoing or planned operations and could have a material adverse effect on the Company's business, financial condition, results of operations or prospects.

## License and Regulations

Medical marijuana retail dispensary licenses permit BHIL to purchase cannabis and cannabis products from licensed cultivation/processing facilities and to sell cannabis and cannabis products to registered patients. The adult-use dispensing organization license permits BHIL to acquire cannabis from a licensed cultivation center, craft grower, processing organization, or another dispensary and to sell cannabis and cannabis products (and limited other items) to adult use purchasers, registered medical cannabis patients and registered caregivers.

BHIL must operate in accordance with the representations made in its license application materials, unless otherwise approved by the IDFPR. It must include its name on the packaging of any cannabis product it sells. All medical products must be obtained from an Illinois registered medical cultivation center, while all adult-use products must be obtained from a licensed adult-use cultivation center, craft grower, processing organization, or another dispensary. BHIL must inspect and document (e.g. through the State tracking system and in accordance with SOPs) all cannabis and cannabis products it acquires for resale. Any cannabis or cannabis products not properly packaged, labeled or inconsistent with State tracking records must be rejected at the time of delivery. At all times, dispensing facilities must remain in compliance with all applicable building, fire, safety and land use laws, rules and regulations, and may not operate a drive through window or offer delivery services. BHIL may only operate during approved hours and must ensure two or more employees are present during all operating hours.

Each dispensary must submit a list of all third-party vendors to the IDFPR and identify all service professionals that will work at the dispensary by name and set forth a description of the services such person will provide. No service professional may work in the dispensary until his or her name is provided to IDFPR and appears on the facility's service professional list.

BHIL may not produce or manufacture cannabis or cannabis products and may not permit on-site consumption at its facilities. BHIL may only sell cannabis or cannabis products to consumers who present a valid medical cannabis registration identification card or valid government-issued photo ID evidencing the customer is 21 years of age or older. BHIL must deal with all suppliers on the same terms and may not enter into an exclusive agreement with any supplier. Further, the company may not contract with, pay, or have a profit-sharing arrangement with third party groups involved in assisting individuals with finding a physician or completing the patient or participant application; nor may it pay a referral fee to a third-party group for sending it patients or participants. No more than 40% of its adult-use inventory may originate from a single supplier. Dispensing organizations are subject to inspections, with or without notice.

Licensees are required to cooperate with such inspections and must make all records, plans, logs, reports and other operational documents available for inspection and copying upon request.

Craft grower licensees are authorized to cultivate cannabis and manufacture cannabis products (including cannabis infused products), and to sell cannabis and cannabis products to licensed adult use dispensing organizations or for use at licensed manufacturers. Transportation licensees are authorized to transport cannabis and cannabis products between licensed cannabis facilities.

#### Storage and Security

BHIL dispensaries must store inventory on-site in a secured and restricted-access area and enter information into the State's tracking system as required to State law and IDFPR rules. Any cannabis or cannabis products in an open or defective package, which have expired, or which the company otherwise has reason to believe have been opened or tampered with must be segregated in secure storage until promptly and properly disposed of.

Dispensing facilities are also required to implement security measures designed to deter and prevent unauthorized entry into the facility (and restricted-access areas) and theft, loss or diversion of cannabis or cannabis products. In this respect, dispensing facilities must maintain a commercial grade alarm and surveillance system installed by an Illinois licensed private alarm contractor or private alarm contractor agency. The company must also implement various security measures, as required by law, rule regulation or SOP, designed to protect the premises, customers and dispensing organization agents (employees).

#### Reporting Requirements

The state of Illinois uses BioTrack THC as its inventory tracking system. All dispensing organization licensees are required to use a real-time, web-based inventory tracking/point-of-sale system that is accessible to IDFPR at any time, and at a minimum, tracks date of sale, amount, price, and currency. BHIL uses BioTrack THC for both inventory management and as a point-of-sale system. Licensees are also required to track each sales transaction at the time of the sale, daily beginning and ending inventory, acquisitions (including information about the supplier and the product) and disposal.

#### Transportation Requirements

Currently, licensed cultivation centers may transport cannabis and cannabis products in accordance with certain guidelines; however, cultivation centers will be prohibited from transporting adult-use cannabis without obtaining a separate transporting organization license beginning on July 1, 2020, provided that such prohibition was and remains suspended pursuant to Executive Order 2020-45. For medical marijuana, dispensing organizations must receive a copy of the shipping manifest prepared by the cultivation center in advance of transport and is required to check the product delivered against such manifest at the time of delivery. All cannabis and cannabis products must be packaged in properly labeled and sealed containers and may not be accepted by a dispensary recipient if packaging is damaged or labels are missing, damaged or tampered with.

The Company is in compliance with the laws of the State of Illinois and the related cannabis licensing framework. There are no current incidences of non-compliance, citations or notices of violation outstanding which have an impact on the Company's licenses, business activities or operations in the State of Illinois. Notwithstanding the foregoing, like all businesses the Company may from time-to-time experience incidences of non-compliance with applicable rules and regulations in the states in which the Company operates, including the State of Illinois, and such non-compliance may have an impact on the Company's licenses, business activities or operations in the applicable state. However, the Company takes steps to minimize, disclose and remedy all incidences of non-compliance which may



have an impact on the Company's licenses, business activities or operations in all states in which the Company operates, including the State of Illinois. See "*Regulatory Framework – Compliance*".

## *Massachusetts*

### Massachusetts Regulatory Landscape

Cannabis for medical use was legalized in Massachusetts by a voter approval of the Massachusetts Medical Marijuana Initiative in 2012. The law took effect on January 1, 2013, eliminating criminal and civil penalties for the possession and use of up to a 60-day or ten (10) ounce supply of marijuana for medical use for patients possessing a State-issued registration card. On November 8, 2016, Massachusetts voters approved Question 4 or the Massachusetts Marijuana Legalization, Regulation and Taxation of Marijuana Initiative, which allowed for recreational or "adult-use" cannabis in the Commonwealth. On July 28, 2017, the Cannabis Control Commission ("CCC") was established under Chapter 55 of the Acts of 2017 (the "Massachusetts Act") to implement and administer laws enabling access to medical and adult-use cannabis. The Commission was appointed on September 12, 2017. On November 16, 2018, the CCC issued the first notices for retail marijuana establishments to commence adult-use operations in Massachusetts. Under the current law, there are no State-wide limits on the total number of licenses issued; however, no individual or entity shall be an owner or a controlling person over more than three licenses in a particular class of license. Similarly, no individual, corporation or other entity shall be an owner or in a position to control the decision making of more than three licenses in a particular class of license. In addition, all marijuana establishments are required to enter into host community agreements with the municipality in which they are located.

### Massachusetts Licenses

The Company through an affiliate, acquired the licenses previously held by Nature's Remedy, which include one (1) final adult-use cultivation license, one (1) final adult-use product manufacturer license and two (2) final adult-use retailer licenses in the Commonwealth of Massachusetts. Nature's Remedy also holds one (1) provisional license for adult-use cultivation. Furthermore, Nature's Remedy held one (1) medical license that permits vertically-integrated operations including the ability to maintain one (1) medical marijuana dispensary in the Commonwealth of Massachusetts. Under the terms of the adult-use marijuana cultivator license, the licensee may cultivate, process and package marijuana, and to transfer marijuana products to marijuana establishments, but not to consumers. An adult-use marijuana product manufacturer is an entity authorized to obtain, manufacture, process and package marijuana and marijuana products, to transfer marijuana and marijuana products to marijuana establishments, but not to consumers. An adult-use marijuana retailer is an entity authorized to purchase, repackage, white label, and transport marijuana and marijuana products from marijuana establishments and to transfer marijuana and marijuana products to marijuana establishments and to sell to consumers. The medical marijuana treatment center ("MTC") licenses are vertically integrated and permit a licensee to cultivate, manufacture, process, package, transport, deliver sell, and purchase marijuana pursuant to the terms of the medical licenses. Massachusetts does not issue a single vertically integrated adult-use license like the MTC license. License types for adult-use are individual for each function and a licensee may pursue multiple license types. Because marijuana is not federally legal, a licensee can sell only cannabis that is grown and manufactured in the Commonwealth of Massachusetts. An adult-use marijuana retailer provides a retail location which may be accessed by consumers 21 years of age or older or, if the retailer is co-located with a MTC by individuals who are registered qualifying patients with the Medical Use of Marijuana Program with a registration card. In order for a customer to be dispensed marijuana, they must present a valid government issued photo ID immediately upon entry of the retail facility. If the individual is younger than 21 years old but 18 years of age or older, he or she shall not be admitted unless he or she produces an - 53 - active medical registration card issued by the CCC. If the individual is younger than 18 years old, he or she shall not be admitted unless he or she produces an active medical registration card and is accompanied by a personal caregiver with an active medical registration card. In addition to the medical registration card, registered qualifying patients 18 years of age and older and personal caregivers must also produce proof of identification. Each recreational customer may be dispensed no more than one ounce of marijuana or five grams of marijuana concentrate per transaction as outlined in 935 CMR 500.140(3)(a)(1). Medical patients may be dispensed up to a 60- day supply of marijuana, or the equivalent amount of marijuana in marijuana infused products, that a registered qualifying patient would reasonably be expected to need over a period of 60 calendar days for his or her personal medical use, which is ten ounces, subject to 935 CMR 501.140(3)(a).

Allowable forms of marijuana in Massachusetts include smokable dried flower, dried flower for vaporizing, cannabis derivative products (i.e., vape pens, gel caps, tinctures, etc.) and medical cannabis-infused products, including edibles.

### Reporting Requirements

The CCC has selected METRC as the State's seed to sale tracking system used to track commercial cannabis activity and movement across the distribution chain. The system allows for other third-party system integration via API.

### Medical Cannabis Regulations

The Commonwealth of Massachusetts has authorized the cultivation, possession and distribution of marijuana for medical purposes by certain licensed Massachusetts marijuana businesses. The Medical Use of Marijuana Program, or MUMP, registers qualifying patients, personal caregivers, Medical Marijuana Treatment Centers, or MTCs, and MTC agents. MTCs were formerly known as Registered Marijuana Dispensaries, or RMDs. The MUMP was established by Chapter 369 of the Acts of 2012, "An Act for the Humanitarian Medical Use of Marijuana", following the passage of the Massachusetts Medical Marijuana Initiative, Ballot Question 3, in the 2012 general election. Additional statutory requirements governing the MUMP were enacted by the Legislature in 2017 and codified at G.L. c. 94I, et. seq. (referred to herein as the "Massachusetts Medical Act"). MTC Certificates of Registration are vertically integrated licenses in that each MTC Certificate of Registration entitles a license holder to one cultivation facility, one processing facility and one dispensary locations. There is a limit of three MTC licenses per person/entity. The Commonwealth of Massachusetts Cannabis Control Commission, or CCC, regulations, 935 CMR 501.000 et seq. (referred to herein as the "Massachusetts Medical Regulations"), provide a regulatory framework that requires MTCs to cultivate, process, transport and dispense medical cannabis in a vertically integrated marketplace. Patients with debilitating medical conditions qualify to participate in the program, including conditions such as cancer, glaucoma, positive status for human immunodeficiency virus (HIV), acquired immune deficiency virus (AIDS), hepatitis C, amyotrophic lateral sclerosis (ALS), Crohn's disease, Parkinson's disease, and multiple sclerosis (MS) when such diseases are debilitating, and other debilitating conditions as determined in writing by a qualifying patient's healthcare provider. The CCC assumed control of the MUMP from the Department of Public Health on December 23, 2018. The CCC approved revised regulations for the MUMP on November 30, 2020, which will become effective when published in the Massachusetts Register.

### Medical Cannabis Licensing Requirements

The Massachusetts Medical Regulations delineate the licensing requirements for MTCs in Massachusetts. Licensed entities must demonstrate the following: (i) they are licensed and in good standing with the Secretary of the Commonwealth of Massachusetts; (ii) no executive, member or any entity owned or controlled by such executive or member directly or indirectly controls more than three MTC licenses; (iii) an MTC may not cultivate medical cannabis from more than two locations statewide; (iv) MTC agents must be registered with the Massachusetts Cannabis Control Commission; (v) an MTC must have a program to provide reduced cost or free marijuana to patients with documented verifiable financial hardships; (vi) one executive of an MTC must register with the Massachusetts Department of Criminal Justice Information Services on behalf of the entity as an organization user of the Criminal Offender Record Information (CORI) system; (vii) the MTC applicant has at least \$500,000 in its control as evidenced by bank statements, lines of credit or equivalent; and (viii) payment of the required application fee.

In an MTC application, an applicant must also demonstrate or include: (i) the name, address date of birth and resumes of each executive of the applicant and of the members of the entity; (ii) a plan to obtain liability insurance coverage in compliance with statutes; (iii) detailed summary of the business plan for the MTC; (iv) an operational plan for the cultivation of marijuana including a detailed summary of policies and procedures; and (v) a detailed summary of the operating policies and procedures for the MTC including security, prevention of diversion, storage of marijuana, transportation of marijuana, inventory procedures, procedures for quality control and testing of product for potential contaminants, procedures for maintaining confidentiality as required by law, personnel policies, dispensing procedures, record keeping procedures, plans for patient education and any plans for patient or personal caregiver home delivery. An MTC applicant must also demonstrate that it has (i) a successful track record of running a business; (ii) a history of providing

healthcare services or services providing marijuana for medical purposes in or outside of Massachusetts; (iii) proof of compliance with the laws of the Commonwealth of Massachusetts; (iv) complied with the laws and orders of the Commonwealth of Massachusetts; and (v) a satisfactory criminal and civil background. Finally, an MTC applicant must specify a cultivation tier for their license, which establishes the minimum and maximum square footage of canopy for their cultivation operation.

Upon the determination by the CCC that an MTC applicant has responded to the application requirements in a satisfactory fashion, the MTC applicant is required to pay the applicable registration fee and shall be issued a Provisional MTC license and, following completion of certain regulatory requirements, a Final MTC license.

After receipt of a Provisional MTC license, the CCC shall review architectural plans for the building of the MTC's cultivation facility and/or dispensing facilities, and shall either approve, modify or deny the same. Once approved, the MTC provisional license holder shall construct its facilities in conformance with the requirements of the Massachusetts Regulations. Once the CCC completes its inspections and issues approval for an MTC of its facilities, the CCC shall issue a Final MTC License to the MTC applicant. Final MTC Licenses are valid for one year, and shall be renewed by filing the required renewal application no later than sixty days prior to the expiration of the certificate of registration. A licensee may not begin cultivating marijuana until it has been issued a Final MTC License by the CCC.

MTC Licenses in Massachusetts are renewed annually. Before expiry, licensees are required to submit a renewal application. While renewals are granted annually, there is no ultimate expiry after which no renewals are permitted. Additionally, in respect of the renewal process, provided that the requisite renewal fees are paid, the renewal application is submitted in a timely manner, and there are no material violations noted against the applicable license, the Company would expect to receive the applicable renewed licenses in the ordinary course of business.

#### Massachusetts Medical Cannabis Dispensary Operational Requirements

An MTC shall follow its written and approved operation procedures in the operation of its dispensary locations. Operating procedures shall include (i) security measures in compliance with the Massachusetts Regulations; (ii) employee security policies including personal safety and crime prevention techniques; (iii) hours of operation and after-hours contact information; (iv) a price list for marijuana; (v) storage and waste disposal protocols in compliance with state law; (vi) a description of the various strains of marijuana that will be cultivated and dispensed, and the forms that will be dispensed; (vii) procedures to ensure accurate recordkeeping including inventory protocols; (viii) plans for quality control; (ix) a staffing plan and staffing records; (x) diversion identification and reporting protocols; and (xi) policies and procedures for the handling of cash on MTC premises including storage, collection frequency and transport to financial institutions. The siting of dispensary locations is expressly subject to local/municipal approvals pursuant to state law, and municipalities control the permitting application process that a MTC must comply with. More specifically, an MTC is to comply with all local requirements regarding siting, provided however that if no local requirements exist, an MTC shall not be sited within a radius of 500 feet of a school, daycare center, or any facility in which children commonly congregate. The 500-foot distance under this section is measured in a straight line from the nearest point of the facility in question to the nearest point of the proposed MTC. The Massachusetts Regulations require that MTCs limit their inventory of seeds, plants, and useable marijuana to reflect the projected needs of registered qualifying patients. An MTC may only dispense to a registered qualifying patient or caregiver who has a current valid certification.

#### Massachusetts Medical Cannabis Security and Storage Requirements

An MTC is to implement sufficient security measures to deter and prevent unauthorized entrance into areas containing marijuana and theft of marijuana at the MTC. These measures must include: (i) allowing only registered qualifying patients, caregivers, dispensary agents, authorized persons, or approved outside contractors access to the MTC facility; (ii) preventing individuals from remaining on the premises of an MTC if they are not engaging in activities that are permitted; (iii) disposing of marijuana or by-products in compliance with law; (iv) establishing limited access areas accessible only to authorized personnel; (v) storing finished marijuana in a secure locked safe or vault; (vi) keeping equipment, safes, vaults or secured areas securely locked; (vii) ensuring that the outside perimeter of the MTC

is sufficiently lit to facilitate surveillance; and (viii) ensuring that landscaping or foliage outside of the RMD does not allow a person to conceal themselves. An MTC shall also utilize a security/alarm system that: (i) monitors entry and exit points and windows and doors, (ii) includes a panic/duress alarm, (iii) includes system failure notifications, (iv) includes 24-hour video surveillance of safes, vaults, sales areas, areas where marijuana is cultivated, processed or dispensed, and (v) includes date and time stamping of all records and the ability to produce a clear, color still photo. The video surveillance system shall have the capacity to remain operational during a power outage. The MTC must also maintain a backup alarm system with the capabilities of the primary system, and both systems are to be maintained in good working order and are to be inspected and tested on regular intervals.

#### Massachusetts Medical Cannabis Transportation Requirements

Marijuana or marijuana-infused products, or MIPs, may be transported between licensed MTCs by MTC agents on behalf of an MTC. MTCs or deliver-only retailers may, with CCC approval, transport marijuana or MIPS directly to registered qualifying patients and Caregivers as part of a home delivery program. An MTC shall staff transport vehicles with a minimum of two dispensary agents. At least one agent shall remain with the vehicle when the vehicle contains marijuana or MIPs. Prior to leaving the origination location, an MTC must weigh, inventory, and account for, on video, the marijuana to be transported.

Marijuana must be packaged in sealed, labeled, and tamper-proof packaging prior to and during transportation. In the case of an emergency stop, a log must be maintained describing the reason for the stop, the duration, the location, and any activities of personnel exiting the vehicle. An MTC shall ensure that delivery times and routes are randomized. Each MTC agent shall carry his or her CCC-issued MUMP ID Card when transporting marijuana or MIPs and shall produce it to CCC representatives or law enforcement officials upon request. Where videotaping is required when weighing, inventorying, and accounting of marijuana before transportation or after receipt, the video must show each product being weighed, the weight, and the manifest. An MTC must document and report any unusual discrepancy in weight or inventory to the CCC and local law enforcement within 24 hours. An MTC shall report to the CCC and local law enforcement any vehicle accidents, diversions, losses, or other reportable incidents that occur during transport, within 24 hours. An MTC shall retain transportation manifests for no less than one year and make them available to the CCC upon request. Any cash received from a qualifying patient or personal caregiver must be transported to an MTC immediately upon completion of the scheduled deliveries. Vehicles used in transportation must be owned, leased or rented by the MTC, be properly registered, and contain a GPS system that is monitored by the MTC during transport of marijuana and said vehicle must be inspected and approved by the CCC prior to use.

During transit, an MTC is to ensure that: (i) marijuana or MIPs are transported in a secure, locked storage compartment that is part of the vehicle transporting the marijuana or MIPs; (ii) the storage compartment cannot be easily removed (for example, bolts, fittings, straps or other types of fasteners may not be easily accessible and not capable of being manipulated with commonly available tools); (iii) marijuana or MIPs are not visible from outside the vehicle; and (iv) product is transported in a vehicle that bears no markings indicating that the vehicle is being used to transport marijuana or MIPs and does not indicate the name of the MTC. Each MTC agent transporting marijuana or MIPs shall have access to a secure form of communication with personnel at the origination location when the vehicle contains marijuana or MIPs.

#### Massachusetts Adult-Use Cannabis Licensing Requirements

Many of the same application requirements exist for an adult-use Marijuana Establishment license application as to those for a medical MTC application, and each owner, officer or member must undergo background checks and fingerprinting with the CCC. Applicants must submit the location and identification of each site, and must establish a property interest in the same, and the applicant and the local municipality must have entered into a host agreement authorizing the location of the adult-use Marijuana Establishment within the municipality, and said agreement must be included in the application. Applicants must include disclosure of any regulatory actions against it by the Commonwealth of Massachusetts, as well as the civil and criminal history of the applicant and its owners, officers, principals or members. The application must include, amongst other information, the proposed timeline for achieving operations, liability insurance, business plan, and a detailed summary describing the Marijuana Establishment's proposed operating policies including

security, prevention of diversion, storage, transportation, inventory procedures, quality control, dispensing procedures, personnel policies, record keeping, maintenance of financial records, diversity plans, and employee training protocols.

#### Massachusetts Adult-Use Cannabis Dispensary Operational Requirements

Marijuana retailers are subject to certain operational requirements in addition to those imposed on Marijuana Establishments generally. Dispensaries must immediately inspect patrons' identification to ensure that everyone who enters is at least 21 years of age. Dispensaries may not dispense more than one ounce of marijuana or five grams of marijuana concentrate per transaction. Point-of-sale systems must be approved by the CCC, and retailers must record sales data. Records must be retained and available for auditing by the CCC and Department of Revenue. Retailers are required to conduct monthly analyses of equipment and sales data to determine that such systems have not been altered or interfered with to manipulate sales data, and to report any such discrepancies to the CCC.

Dispensaries must also make consumer education materials available to patrons in languages designated by the CCC, with analogous materials for visually- and hearing-impaired persons. Such materials must include:

1. A warning that marijuana has not been analyzed or approved by the FDA, that there is limited information on side effects, that there may be health risks associated with using marijuana, and that it should be kept away from children;
2. A warning that when under the influence of marijuana, driving is prohibited and machinery should not be operated;
3. Information to assist in the selection of marijuana, describing the potential differing effects of various strains of marijuana, as well as various forms and routes of administration;
4. Materials offered to consumers to enable them to track the strains used and their associated effects;
5. Information describing proper dosage and titration for different routes of administration, with an emphasis on using the smallest amount possible to achieve the desired effect;
6. A discussion of tolerance, dependence, and withdrawal;
7. Facts regarding substance abuse signs and symptoms, as well as referral information for substance abuse treatment programs;
8. A statement that consumers may not sell marijuana to any other individual;
9. Information regarding penalties for possession or distribution of marijuana in violation of Massachusetts law; and
10. Any other information required by the CCC.

#### Massachusetts Adult-Use Cannabis Security and Storage Requirements

Each Marijuana Establishment must implement sufficient safety measures to deter and prevent unauthorized entrance into areas containing marijuana and theft of marijuana at the establishment. Security measures taken by the establishments to protect the premises, employees, consumers and general public shall include, but not be limited to, the following:

1. Positively identifying and limiting access to individuals 21 years of age or older who are seeking access to the Marijuana Establishment or to whom marijuana products are being transported;
2. Adopting procedures to prevent loitering and ensure that only individuals engaging in activity expressly or by necessary implication are allowed to remain on the premises;
3. Proper disposal of marijuana in accordance with applicable regulations;
4. Securing all entrances to the Marijuana Establishment to prevent unauthorized access;
5. Establishing limited access areas which shall be accessible only to specifically authorized personnel limited to include only the minimum number of employees essential for efficient operation;
6. Storing all finished marijuana products in a secure, locked safe or vault in such a manner as to prevent diversion, theft or loss;
7. Keeping all safes, vaults, and any other equipment or areas used for the production, cultivation, harvesting, processing or storage, including prior to disposal, of marijuana or marijuana products securely locked and protected from entry, except for the actual time required to remove or replace marijuana;
8. Keeping all locks and security equipment in good working order;

9. Prohibiting keys, if any, from being left in the locks or stored or placed in a location accessible to persons other than specifically authorized personnel;
10. Prohibiting accessibility of security measures, such as combination numbers, passwords or electronic or biometric security systems, to persons other than specifically authorized personnel;
11. Ensuring that the outside perimeter of the marijuana establishment is sufficiently lit to facilitate surveillance, where applicable;
12. Ensuring that all marijuana products are kept out of plain sight and are not visible from a public place, outside of the marijuana establishment, without the use of binoculars, optical aids or aircraft;
13. Developing emergency policies and procedures for securing all product following any instance of diversion, theft or loss of marijuana, and conduct an assessment to determine whether additional safeguards are necessary;
14. Establishing procedures for safe cash handling and cash transportation to financial institutions to prevent theft, loss and associated risks to the safety of employees, customers and the general public;
15. Sharing the Marijuana Establishment's floor plan or layout of the facility with law enforcement authorities, and in a manner and scope as required by the municipality and identifying when the use of flammable or combustible solvents, chemicals or other materials are in use at the Marijuana Establishment;
16. Sharing the Marijuana Establishment's security plan and procedures with law enforcement authorities, including police and fire services departments, in the municipality where the Marijuana Establishment is located and periodically updating law enforcement authorities, police and fire services departments, if the plans or procedures are modified in a material way; and
17. Marijuana must be stored in special limited access areas, and alarm systems must meet certain technical requirements, including the ability to record footage to be retained for at least 90 days.

#### Massachusetts Adult-Use Cannabis Transportation Requirements

Marijuana products may only be transported between licensed Marijuana Establishments by registered Marijuana Establishment agents. A licensed marijuana transporter may contract with a Marijuana Establishment to transport that licensee's marijuana products to other licensed establishments. All transported marijuana products are linked to the seed-to-sale tracking program. Any marijuana product that is undeliverable or is refused by the destination Marijuana Establishment shall be transported back to the originating establishment. All vehicles transporting marijuana products shall be staffed with a minimum of two Marijuana Establishment agents. At least one agent shall remain with the vehicle at all times that the vehicle contains marijuana or marijuana products. Prior to the products leaving a Marijuana Establishment, the originating Marijuana Establishment must weigh, inventory, and account for, on video, all marijuana products to be transported. Within eight hours after arrival at the receiving Marijuana Establishment, the receiving establishment must re-weigh, re-inventory, and account for, on video, all marijuana products transported. Marijuana products must be packaged in sealed, labeled, and tamper or child-resistant packaging prior to and during transportation. In the case of an emergency stop during the transportation of marijuana products, a log must be maintained describing the reason for the stop, the duration, the location, and any activities of personnel exiting the vehicle. A Marijuana Establishment or a marijuana transporter transporting marijuana products is required to ensure that all transportation times and routes are randomized and remain within Massachusetts.

Vehicles must additionally be equipped with a video system that includes one or more cameras in the storage area of the vehicle and one or more cameras in the driver area of the vehicle. The video cameras must remain operational at all times during the transportation process and have the ability to produce a clear color still photo whether live or recorded, with a date and time stamp embedded and that do not significantly obscure the picture.

Vehicles used for transport must be owned or leased by the Marijuana Establishment or transporter, and they must be properly registered, inspected, and insured in Massachusetts. Marijuana may not be visible from outside the vehicle, and it must be transported in a secure, locked storage compartment. Each vehicle must have a global positioning system, and any agent transporting marijuana must have access to a secure form of communication with the originating location.

#### CCC Inspections

The CCC or its agents may inspect an MTC, Marijuana Establishment and their affiliated vehicles at any time without prior notice. An MTC or Marijuana Establishment shall immediately upon request make available to the CCC information that may be relevant to a CCC

inspection, and the CCC may direct an MTC or Marijuana Establishment to test marijuana for contaminants. Any violations found will be noted in a deficiency statement that will be provided to the MTC or Marijuana Establishment, and the MTC or Marijuana Establishment shall thereafter submit a Plan of Correction to the CCC outlining with particularity each deficiency and the timetable and steps to remediate the same. The CCC shall have the authority to suspend or revoke a certificate of registration in accordance with the applicable regulations.

## *Nevada*

### Nevada Regulatory Landscape

Medical marijuana use was legalized in Nevada by a ballot initiative in 2000. In November 2016, voters in Nevada passed an adult use marijuana measure to allow for the sale of adult use marijuana in the state. The first dispensaries to sell adult use marijuana began sales in July 2017. The NV CCB is the regulatory agency overseeing the medical and adult use cannabis programs. Similar to California, cities and counties in Nevada are allowed to determine the number of local marijuana licenses they will issue.

To the knowledge of management of the Company, there have not been any statements or guidance made by federal authorities or prosecutors regarding the risk of enforcement action specific to the State of Nevada. For more information on federal enforcement and the risks associated with the U.S. cannabis regulatory environment generally, see without limitation, “*Risk Factors – Risks Related to the Regulatory Environment – U.S. federal law and enforcement pertaining to cannabis and hemp*” and “*Risk Factors – Risks Related to the Regulatory Environment – Risks related to heightened scrutiny by regulatory authorities*”.

### Nevada Licenses

FBS-NV holds medical and adult-use cannabis cultivation, processing and distribution licenses issued by the NV CCB and a hemp handler license issued by the NV DOA. Under applicable laws, licenses issued by the NV CCB or the NV DOA permit the applicable entities to cultivate, manufacture/process, package, sell or purchase pursuant to the terms of the license, which is issued by the NV CCB under the provisions of Nevada Revised Statutes section 453A.

The Company signed a definitive agreement to acquire 100% of the equity interest of an entity operating an adult-use and medical retail dispensary under the name The Apothecarium, which is used under license with an affiliate of TerrAscend Corp. in Las Vegas, Nevada. Additionally, the Company entered a definitive agreement to acquire NuLeaf, Inc., a Nevada-based vertically integrated operator. NuLeaf currently owns rights to three adult-use and medical retail dispensaries in Las Vegas, NV and Lake Tahoe, NV, a cultivation facility in Sparks, NV, as well as a processing facility in Reno, NV.

All marijuana establishments must register with the NV CCB. If applications contain all required information and after vetting by officers, establishments are issued a medical marijuana establishment registration certificate. In a local governmental jurisdiction that issues business licenses, the issuance by the NV CCB of a medical marijuana establishment registration certificate is considered provisional until the local government has issued a business license for operation and the establishment is in compliance with all applicable local governmental ordinances. Final registration certificates are valid for a period of one year and are subject to annual renewals after required fees are paid and the business remains in good standing. Renewal requests are typically communicated through email from the NV CCB and include a renewal form. The renewal periods serve as an update for the NV CCB on the licensee’s status toward active licensure. It is important to note that provisional licenses do not permit the operation of any commercial or medical cannabis activity. Only after a provisional licensee has gone through necessary state and local inspections, if applicable, and has received a final registration certificate from the NV CCB may an entity engage in cannabis business operation.

Any unexpected delays or costs associated with the licensing renewal process could impede the ongoing or planned operations and could have a material adverse effect on the Company’s business, financial condition, results of operations or prospects.

## License and Regulations

In the State of Nevada, only cannabis that is grown in the State can be sold in the State.

Retail dispensary licenses and registration certificates permit a license holder to purchase marijuana from cultivation facilities, marijuana and marijuana products from product manufacturing facilities and marijuana from other retail stores and allows the sale of marijuana and marijuana products to consumers.

Medical cultivation licenses permit a license holder to acquire, possess, cultivate, deliver, transfer, have tested, transport, supply or sell marijuana and related supplies to medical marijuana dispensaries, facilities for the production of edible medical marijuana products and/or medical marijuana-infused products, or other medical marijuana cultivation facilities. One must have a final medical registration certificate in order to apply for adult use status. Once so licensed, adult use cultivators are authorized to perform the previously described for the adult use market.

Medical product manufacturing licenses permit a license holder to acquire, possess, manufacture, deliver, transfer, transport, supply, or sell edible marijuana products or marijuana infused products to other medical marijuana production facilities or medical marijuana dispensaries. One must have a final medical registration certificate in order to apply for adult use status. Once so licensed, adult use cultivators are authorized to perform the previously described for the adult use market.

Hemp handler licenses permit a license holder to handle raw industrial hemp, purchase hemp-derived constituents (such as hemp-derived CBD) from licensed hemp operators, and to infuse or manufacture products containing hemp-derived constituents.

## Reporting Requirements

The State of Nevada uses METRC as its computerized T&T system used to track commercial cannabis on a seed-to-sale basis. Individual licensees whether, directly or through third-party integration systems, are required to push data to the state to meet all reporting requirements. The Company's chosen seed-to-sale system will capture the required data points for cultivation, manufacturing and retail as required under state law.

## Storage and Security

To ensure the safety and security of cannabis business premises and to maintain adequate controls against diversion, theft, and loss of cannabis and cannabis products, FBS-NV is required to do the following:

1. Maintain an enclosed, locked facility;
2. Have a single secure entrance;
3. Train employees in security measures and controls, emergency response protocol, confidentiality requirements, safe handling of equipment, procedures for handling products, as well as the differences in strains, methods of consumption, methods of cultivation, methods of fertilization and methods for health monitoring;
4. Implement and install, at a minimum, the following security equipment and practices to deter and prevent unauthorized entrances:
  - a. devices that detect unauthorized intrusion (which may include a signal system);
  - b. exterior lighting designed to facilitate surveillance;
  - c. electronic monitoring devices, further including (without limitation):
    - i. at least one call-up monitor that is at least 19 inches in size;



- ii. a video printer that can immediately produce a clear still photo from any video camera image;
- iii. video cameras with a recording resolution of at least 704 x 480 that full capture all of the building's points of ingress and egress as well as all interior limited access areas such that such cameras capture and can identify any activity occurring in or adjacent to the building;
- iv. a video camera at each point-of-sale location which allows for the identification of any person who holds a valid registry identification card, including, without limitation, a designated primary caregiver, purchasing medical marijuana;
- v. a video camera in each grow room that can identify any activity occurring within the grow room in low light conditions;
- vi. a method for storing video recordings from the video cameras for at least 30 calendar days;
- vii. a failure notification system that provides an audible and visual notification of any failure in the electronic monitoring system;
- viii. sufficient battery backup for video cameras and recording equipment to support at least five (5) minutes of recording in the event of a power outage; and
- ix. a security alarm to alert local law enforcement of unauthorized breach of security; and

5. Implement security procedures that:

- a. restrict access of the establishment to only those persons/employees authorized to be there;
- b. deter and prevent theft;
- c. provide identification (badge) for those persons/employees authorized to be in the establishment;
- d. prevent loitering;
- e. require and explain electronic monitoring; and
- f. require and explain the use of automatic or electronic notifications to alert local law enforcement of any security breaches.

There are no incidences of non-compliance, citations or notices of violation outstanding which have an impact on the Company's licenses, business activities or operations in the State of Nevada. Notwithstanding the foregoing, as discussed in more detail under the subsection entitled "*Compliance*" below, like all businesses the Company may from time-to-time experience incidences of non-compliance with applicable rules and regulations in the states in which the Company operates, including the State of Nevada, and such non-compliance may have an impact on the Company's licenses, business activities or operations in the applicable state. However, the Company takes steps to minimize, disclose and remedy all incidences of non-compliance which may have an impact on the Company's licenses, business activities or operations in all states in which the Company operates, including the State of Nevada. The Company is not aware of any incidence of non-compliance, citations or notices of violation received by FBS-NV or the failure of FBS-NV to comply with applicable licensing requirements and the regulatory framework enacted by the State of Nevada.

*Ohio*

Ohio Regulatory Landscape

House Bill 523, effective on September 8, 2016, legalized medical marijuana in Ohio. The Ohio Medical Marijuana Control Program ("MMCP") allows people with certain medical conditions, upon the recommendation of an Ohio-licensed physician certified by the State Medical Board, to purchase and use medical marijuana. House Bill 523 required that the framework for the MMCP would be in

place no later than September 2018. This timeframe allowed for a deliberate process to ensure the safety of the public and to promote access to a safe product. Sales of medical marijuana in Ohio began in January 2019.

The following three state government agencies are responsible for the operation of the MMCP: (i) the Ohio Department of Commerce is responsible for overseeing medical marijuana cultivators, processors and testing laboratories; (ii) the State of Ohio Board of Pharmacy is responsible for overseeing medical marijuana retail dispensaries, the registration of medical marijuana patients and caregivers, the approval of new forms of medical marijuana and coordinating the Medical Marijuana Advisory Committee; and (iii) the State Medical Board of Ohio is responsible for certifying physicians to recommend medical marijuana and may add to the list of qualifying conditions for which medical marijuana can be recommended. Qualifying medical conditions for medical marijuana include: HIV/AIDS, Lou Gehrig's disease, Alzheimer's disease, cancer, chronic traumatic encephalopathy, Crohn's disease, epilepsy or other seizure disorder, fibromyalgia, glaucoma, hepatitis C, inflammatory bowel disease, multiple sclerosis (MS), pain (either chronic, severe, or intractable), Parkinson's disease, PTSD, sickle cell anemia, spinal cord disease or injury, Tourette's syndrome, traumatic brain injury, ulcerative colitis. In order for a patient to be eligible to obtain medical marijuana, a physician must make the diagnosis of one of these conditions. The State of Ohio Board of Pharmacy is in the process of revising its regulations for dispensaries, for the forms and methods for administering medical marijuana, and for patients and caregivers.

Several forms of medical marijuana are legal in Ohio, these include: inhalation of marijuana through a vaporizer (not direct smoking), oils, Tinctures, plant material, edibles, patches and any other forms approved by the State Board of Pharmacy.

To the knowledge of management of the Company, there have not been any statements or guidance made by federal authorities or prosecutors regarding the risk of enforcement action specific to the State of Ohio. For more information on federal enforcement and the risks associated with the U.S. cannabis regulatory environment generally, see without limitation, "*Risk Factors – Risks Related to the Regulatory Environment – U.S. federal law and enforcement pertaining to cannabis and hemp*" and "*Risk Factors – Risks Related to the Regulatory Environment – Risks related to heightened scrutiny by regulatory authorities*".

#### Ohio Licenses

In June 2019, the Company, through a subsidiary, entered into a management services agreement with Franklin Bioscience OH, LLC, a licensed medical marijuana processor in Ohio. In July 2021, the licensed medical marijuana processor received authorization to commence operation at the processing facility. The Company and the licensed medical marijuana processor have applied for a change of ownership to state regulators for the licensed medical marijuana processor to become a subsidiary of the Company. In August 2021, the Company closed on the acquisition of Franklin Bioscience OH, LLC.

In July 2021, The Company acquired OhiGrow, LLC and Ohio Green Grow LLC (collectively, "OhiGrow"), inclusive of an approximately 10,000 sq. ft. cultivation facility and 1.35 acres of land.

#### License and Regulations

To be considered for approval of a processing license, the applicant must complete all mandated requirements. To obtain a Certificate of Operation for a processing facility, the prospective licensee must be capable of operating in accordance with Chapter 3796 of the Revised Code, the Medical Marijuana Control Program. Certificates of Operation carry one-year terms. Following issuance of a Certificate of Operation, the provisionally licensed processor will be authorized to manufacture and produce medical cannabis products.

#### Reporting

Ohio uses the METRC system as its seed-to-sale tracking system. Licensees are required to use METRC to push data to the State to meet all of the reporting requirements. When the provisionally licensed processor is operational, it intends to implement its tracking system to comply with the State's tracking and reporting requirements.

## Storage and Security

All licensees must have a security system that remains operational at all times and that uses commercial grade equipment to prevent and detect diversion, theft or loss of medical cannabis, including:

- A perimeter alarm;
- Motion detectors; and
- Duress and panic alarms.

Video cameras must be installed at the processing facility and directed at all approved safes, approved vaults, cannabis sales areas, and any other area where plant material, medical cannabis extract, or medical cannabis products are being processed, stored or handled. Video surveillance must take place 24 hours a day, 7 days a week. Recordings from all video cameras must be readily available for immediate review by regulating and law enforcement with jurisdiction upon request and must be retained for at least 45 days.

There are no current incidences of non-compliance, citations or notices of violation outstanding which have an impact on the Company's business activities or operations in the State of Ohio. Notwithstanding the foregoing, like all businesses the Company may from time-to-time experience incidences of non-compliance with applicable rules and regulations in the states in which the Company operates, including the State of Ohio, and such non-compliance may have an impact on the Company's business activities or operations in the state. However, the Company takes steps to minimize, disclose and remedy all incidences of non-compliance which may have an impact on the Company's licenses, business activities or operations in all states in which the Company operates, including the State of Ohio. The Company is not aware of any incidence of non-compliance, citations or notices of violation received by the provisionally licensed medical marijuana processor that will be operated by the Company pursuant to the applicable management services agreement or the failure of the provisionally licensed medical marijuana processor to comply with applicable licensing requirements and the regulatory framework enacted by the State of Ohio.

## *Pennsylvania*

### Pennsylvania Regulatory Landscape

The Pennsylvania Medical Marijuana Act (the "PAMMA") was signed into law on April 17, 2016 and originally provided access to Pennsylvania residents with one of 17 qualifying conditions, including epilepsy, chronic pain, and post-traumatic stress disorder. Retail sales began in February 2018. The Commonwealth of Pennsylvania, which consists of nearly 13 million residents and qualifies as the fifth largest population in the U.S., operates as a high-barrier market with very limited market participation. The PAMMA authorizes only a maximum of 25 grower/processing permits and 50 dispensary permits. As part of "Phase 1" of the Commonwealth's permitting process in 2017, the Pennsylvania Department of Health (the "PA DOH") which administers the Commonwealth's Medical Marijuana Program, originally awarded only 12 grower/processing permits and 27 dispensary permits. Subsequently, in 2018, PA DOH conducted "Phase 2" of the permitting process, during which it awarded the remaining 13 grower/processing permits and 23 dispensary permits authorized under the PAMMA. In July of 2019, the PA DOH expanded the list of qualifying medical conditions to include anxiety disorders and Tourette syndrome, increasing the number of qualifying conditions to 23.

The Company (through its Pennsylvania subsidiaries) is in compliance with applicable licensing requirements and the regulatory framework enacted by the Commonwealth of Pennsylvania.

To the knowledge of management of the Company, there have not been any statements or guidance made by federal authorities or prosecutors regarding the risk of enforcement action specific to the Commonwealth of Pennsylvania. For more information on federal enforcement and the risks associated with the U.S. cannabis regulatory environment generally, see without limitation, "*Risk Factors* –

*Risks Related to the Regulatory Environment – U.S. federal law and enforcement pertaining to cannabis and hemp” and “Risk Factors – Risks Related to the Regulatory Environment – Risks related to heightened scrutiny by regulatory authorities”.*

### Pennsylvania Licenses

The Company, through certain subsidiaries, holds six dispensary permits, allowing for up to 18 medical marijuana retail dispensary locations in applicable regions within the Commonwealth of Pennsylvania. As of the date of this Prospectus, the Company operates sixteen medical cannabis dispensaries in the Commonwealth of Pennsylvania, located in or around the cities of Ardmore, Bethlehem, Bristol, Colwyn, Easton, Hazleton, Irwin, Johnstown, Philadelphia (three locations), Reading, Scranton (two locations), Stroudsburg, and West Chester. All sixteen dispensaries operate under the Company’s “BEYOND/HELLO” brand.

All dispensaries must register with the PA DOH. Registration certificates are valid for a period of one year and are subject to annual renewals after required fees are paid and the business remains in good standing. Renewal requests are typically communicated through email and include a renewal form. Provided that the requisite renewal fees are paid, the renewal application is submitted in a timely manner, and there are no material violations noted against the applicable license, the Company would expect its Pennsylvania subsidiaries to receive the applicable renewed license in the ordinary course of business. However, any unexpected delays or costs associated with the licensing renewal process could impede the ongoing or planned operations and could have a material adverse effect on the Company’s business, financial condition, results of operations or prospects.

### License and Regulations

Each retail dispensary license permits the holder to purchase marijuana and marijuana products from grower/processing facilities and allows the sale of marijuana and marijuana products to registered patients.

### Site-Visits & Inspections

All licensed dispensary locations must be inspected and approved by the PA DOH before commencing live operations. Thereafter, dispensaries are subject to PA DOH inspection, whether with or without notice.

### Reporting Requirements

The Commonwealth of Pennsylvania uses MJ Freeway as a T&T system for seed-to-sale reporting. Individual permittees are required to use MJ Freeway to push data to the Commonwealth to meet all reporting requirements. The Company’s subsidiaries use MJ Freeway as its in-house computerized seed-to-sale software, which integrates with the Commonwealth’s MJ Freeway program and captures the required data points for cultivation, manufacturing and retail as required in the Pennsylvania medical marijuana laws and regulations.

### Storage and Security

All dispensaries are required to have a locked limited access area for the storage of medical marijuana that is expired, damaged, deteriorated, mislabeled, contaminated, recalled or whose containers or packages have been opened or breached until such product is returned to the grower/processor. The Company subsidiary dispensaries maintain security systems with professional monitoring, 24-hours a day and seven days a week, and fixed cameras on the interior and exterior of the facilities in a manner consistent with Pennsylvania law. Data for surveillance systems is stored for a period of 4 years in a readily available format for investigative purposes.

The Company is in compliance with the laws of the State of Pennsylvania and the related cannabis licensing framework. There are no current incidences of non-compliance, citations or notices of violation outstanding which have an impact on the Company’s licenses, business activities or operations in the Commonwealth of Pennsylvania. Notwithstanding the foregoing, like all businesses the Company may from time-to-time experience incidences of non-compliance with applicable rules and regulations in the states in which the

Company operates, including the Commonwealth of Pennsylvania, and such non-compliance may have an impact on the Company's licenses, business activities or operations in the applicable state. However, the Company takes steps to minimize, disclose and remedy all incidences of non-compliance which may have an impact on the Company's licenses, business activities or operations in all states in which the Company operates, including the Commonwealth of Pennsylvania. See "Regulatory Framework – Compliance".

## *Virginia*

### Virginia Regulatory Landscape

Virginia legalized medical marijuana for the treatment of glaucoma and cancer as part of sweeping changes to the Commonwealth's drug laws in 1979. In 2015, the Commonwealth passed legislation that provided an affirmative defense for the possession of cannabidiol or THC-A oil pursuant to a valid written certification for patient use of the oils from a physician to alleviate intractable epilepsy but made no provision for a patient to acquire these substances.

In 2017, Virginia commenced a program that allows registered patients to access and use cannabis oil. The enabling legislation also authorized the Commonwealth to issue 5 pharmaceutical processor licenses that allow the holder thereof to cultivate, manufacture and dispense medical cannabis from a single location. Pharmaceutical processor licenses are issued by the Virginia Board of Pharmacy (the "VA BOP") on a regional (restricted) based such that only one licensee is permitted to operate in each of 5 defined Health Service Areas across the Commonwealth. In 2018, the Commonwealth expanded the program to allow eligible practitioners to recommend medical cannabis to patients suffering from any diseases or conditions. Additionally, the law required information about dispensed oils to be reported in the Prescription Monitoring Program ("PMP") and mandated that practitioners check the PMP prior to issuing patient certifications. In March 2020, the Commonwealth further expanded the medical marijuana program by authorizing licensees to add 5 off-site dispensing locations within their Health Service Area, replacing definitions of CBD oil and THC-A oil with a single definition of "cannabis oil," and removing certain restrictions applicable to oil potency. The March 2020 legislation will become effective on July 1, 2020, and a subset of the regulations implementing the March 2020 legislation became effective on September 30, 2020 with the remaining provisions taking effect on February 8, 2021.

The Company, through Dalitso, is in compliance with applicable licensing requirements and the regulatory framework enacted by the Commonwealth of Virginia.

To the knowledge of management of the Company, there have not been any statements or guidance made by federal authorities or prosecutors regarding the risk of enforcement action specific to the Commonwealth of Virginia. For more information on federal enforcement and the risks associated with the U.S. cannabis regulatory environment generally, see without limitation, "*Risk Factors – Risks Related to the Regulatory Environment – U.S. federal law and enforcement pertaining to cannabis and hemp*" and "*Risk Factors – Risks Related to the Regulatory Environment – Risks related to heightened scrutiny by regulatory authorities*".

### Virginia Licenses

Dalitso currently holds a conditional approval from the VA BOP to cultivate, manufacture, and dispense medical cannabis in Health Service Area II, which covers Loudon, Fairfax, Arlington and Prince William Counties. As of the date of this Prospectus, the Company operates two medical cannabis dispensaries and engages in cultivation and manufacturing operations in the Commonwealth of Virginia at the Company's facility located in the city of Manassas. The dispensaries operate under the Company's BEYOND/HELLO™ brand. The Company is permitted to open four additional dispensaries in the Commonwealth of Virginia, and is engaging in processing operations at the Company's Manassas facility.

## License and Regulations

Pharmaceutical processors are required to designate a “Pharmacist in Charge” to manage its operation, and to have a supervising pharmacist on duty during all hours of operation. Numerous tasks that involve handling cannabis oil must be performed by a pharmacist or a pharmacy technician acting under a pharmacist’s supervision. Those tasks include, for example, labeling oils, removing oils from inventory, measuring oils for dispensing, and selling oils. Pharmacists and pharmacy technicians must have current licenses, and the ratio of pharmacists to pharmacy technicians cannot exceed 6-to-1 (prior to recent legislative changes, the ratio was 4:1). The VA BOP has also imposed certain educational requirements cultivation and manufacturing processes, as well as significant employee training, both upon hire and on a regular, continuous basis thereafter.

A pharmaceutical processor must operate for a minimum of 35 hours per week. Access to the facility is limited to employees performing their job duties (who must display ID badges) and patients (and their parents or guardians). Pharmacists are required to counsel registered patients (and parents/legal guardians as applicable) about medical cannabis products, including (but not limited to) proper use and storage.

As a general matter, the VA BOP prohibits use of pesticides in cultivation (with some exception) and mandates that extraction methods meet industry standards. All medical cannabis products must be branded, tested, and registered with the VA BOP before they can be dispensed. Medical cannabis products must be packaged in child-resistant containers (with limited exceptions), properly labeled, and tested (at the batch level) by qualified independent laboratories. In the course of dispensing operations, a pharmacist or pharmacy technician must check patient identification and certification before dispensing any medical cannabis product(s) and detailed records about all dispensing transactions (along with other records) must be maintained for a period of not less than 3 years, and the licensee must implement a stringent quality assurance program designed to prevent dispensing errors. Expired, damaged or otherwise waste cannabis plant material and products must be stored in a secure manner until properly destroyed.

## Storage and Security

Pharmaceutical processors are subject to a number of inventory and security requirements under Virginia law and VA BOP regulations. For example, they must: conduct an initial comprehensive inventory; establish ongoing inventory controls and procedures; conduct weekly inventory reviews; and prepare an annual inventory report (inventory records must be made available to the VA BOP and its agents for inspection and copying). All parts of the cannabis plant and medical cannabis products (whether finished or in process) must be stored in a locked and secured vault or safe with appropriate access limitations and the pharmaceutical processor must maintain a sophisticated security system that satisfies VA BOP-mandated criteria. Cannabis and cannabis products must be stored in a generally clean, sanitary, and secure area, and storage areas and related procedures are subject to a number of VA BOP requirements. Pharmaceutical processors must install and maintain a video surveillance system that captures all areas where cannabis and cannabis products (whether finished or in process) are handled or stored. Surveillance recordings must be stored for 30 days and made available for the VA BOP’s immediate review upon request. All security breaches or other events must be promptly reported to the VA BOP.

## Site-Visits & Inspections

At all times, pharmaceutical processing facilities are subject to inspection by the VA BOP and certain other authorized agencies, and pharmacists and pharmacy technicians on-site must be prepared to present their current license or registration to the VA BOP or its agencies during inspections.

## Reporting Requirements

Pharmaceutical processors are required to maintain an electronic tracking system comprised of an electronic radio-frequency identification seed-to-sale system capable of tracking cannabis from either the seed or immature plant stage until the cannabis oils are sold to a registered patient, parent, or legal guardian or until the cannabis, including the seeds, parts of plants, and extracts, are destroyed.

The electronic tracking system shall include, at a minimum, a central inventory management system and standard and ad hoc reporting functions as required by the VA BOP (and must otherwise satisfy recordkeeping laws, rules and regulations).

The Company is in compliance with the laws of the Commonwealth of Virginia and the related cannabis licensing framework. There are no current incidences of non-compliance, citations or notices of violation outstanding which have an impact on the Company's licenses, business activities or operations in the Commonwealth of Virginia. Notwithstanding the foregoing, like all businesses the Company may from time-to-time experience incidences of non-compliance with applicable rules and regulations in the states in which the Company operates, including the Commonwealth of Virginia, and such non-compliance may have an impact on the Company's licenses, business activities or operations in the applicable state. However, the Company takes steps to minimize, disclose and remedy all incidences of non-compliance which may have an impact on the Company's licenses, business activities or operations in all states in which the Company operates, including the Commonwealth of Virginia. See "*Regulatory Framework – Compliance*".

## **Compliance**

With the oversight and under the direction of the VP of Compliance, the Company's legal department oversees, maintains, and implements a compliance program in conjunction with its operations in each jurisdiction. In addition to the Company's legal and compliance departments, the Company has local regulatory/compliance counsel engaged in every jurisdiction (state and local) in which it operates. Together with on-site management in each jurisdiction, the Company's legal and compliance departments are responsible for ensuring operations and employees strictly comply with applicable laws, regulations, and licensing conditions and ensure that operations do not endanger the health, safety or welfare of the community. The Company designates a duly qualified and experienced manager at each location who is responsible to coordinate with operational units within each facility (to extent applicable) to ensure that the operation and all employees are following and complying with the Company's written security procedures and all regulatory compliance standards.

In conjunction with the Company's human resources and operations departments, the compliance and quality departments help oversee and implement training for all employees, including on the following topics:

- compliance with state and local laws;
- cultivation/manufacturing/dispensing/transport procedures (as applicable);
- security and safety policies and procedures;
- inventory control, T&T, seed-to-sale, and point of sale systems training (as applicable); and
- quality control.

The Company's compliance program emphasizes security and inventory control to ensure strict monitoring of cannabis (including living plants and harvested plant material) and cannabis product inventory. Only authorized, properly trained employees are allowed to access the Company's inventory management systems.

The Company's compliance department and legal team, comprised of in-house and local outside counsel, monitors all compliance notifications from the regulators and inspectors in each market, timely resolving any issues identified. The team maintains records of all compliance notifications received from the state regulators or inspectors and how and when the issue was resolved. The Company has created comprehensive standard operating procedures that include detailed descriptions and instructions for receiving shipments of inventory, inventory tracking, recordkeeping and record retention practices related to inventory, as well as procedures for performing inventory reconciliation and ensuring the accuracy of inventory tracking and recordkeeping. The Company maintains accurate records of its inventory at all licensed facilities. Adherence to the Company's standard operating procedures is mandatory and ensures that the Company's operations are compliant with the rules set forth by the applicable state and local laws, regulations, ordinances, licenses and other requirements. Training on these standard operating procedures is mandatory by all employees and defined by function and role.

The Company has developed and continues to refine a robust compliance program designed to ensure operational and regulatory requirements continue to be satisfied and has worked closely with experts and outside counsel to develop compliance procedures intended to assist the Company in monitoring compliance with U.S. state law on an ongoing basis. The Company will continue to work closely with outside counsel and other compliance experts to further develop, enhance and improve its compliance and risk management and mitigation processes and procedures in furtherance of continued compliance with the complex regulatory frameworks of the states where the Company operates. The internal compliance program currently in place includes continued monitoring by managers and executives of the Company and its subsidiaries to ensure that all operations conform to and comply with required laws, rules, regulations and SOPs. The Company further requires its operating subsidiaries to report and disclose all instances of non-compliance, regulatory, administrative, or legal proceedings that may be initiated against them.

Notwithstanding the foregoing, from time to time, as with all businesses and all rules, it is anticipated that the Company, through its subsidiaries and establishments to which the Company provides operational support, may experience incidences of non-compliance with applicable rules and regulations, which may include minor matters such as:

- staying open slightly too late due to an excess of customers at stated closing time;
- minor inventory discrepancies with regulatory reporting software;
- missing fields in regulatory reports;
- missing fields entries in a visitor log;
- cleaning schedules not available on display;
- educational materials and/or interpreter services not available in a sufficient number of languages;
- updated staffing plan not immediately available on site;
- improper illumination of external signage;
- marijuana infused product utensils improperly stored;
- partial obstruction of camera views; and/or
- supplemental use of onsite surveillance room (i.e., storage).

In addition, either on an inspection basis or in response to complaints, such as from neighbors, customers or former employees, State or local regulators may, among other things, issue investigatory- or demand-type letters, give warnings to or cite businesses which the Company operates or for which the Company provides operational support for violations, including those listed above. Such regulatory actions could lead to a requirement or directive to submit and thereafter comply with (for example) a plan of correction. Depending on the jurisdiction, it is also possible regulators may assess penalties and/or amendments, suspensions or revocations of licenses or otherwise take action that may impact the Company's licenses, business activities, operational support activities or operations.

To minimize opportunities for non-compliance and among other measures, the Company has implemented regular compliance reviews to ensure its subsidiaries and establishments to which it provides operational support are operating in conformance with applicable State and local cannabis rules and regulations. In the event non-compliance is discovered, during a compliance review or otherwise, the Company will promptly remedy the same, including by self-reporting to applicable State and local cannabis regulators as and when required by law and will make all requisite and appropriate public disclosures of non-compliance, citations, notices of violation and the like which may have an impact on its licenses, business activities, operational support activities or operations.



## SECONDARY SALES

Securities may be sold under this Prospectus by way of secondary offering by or for the account of certain of our securityholders. The Prospectus Supplement that we will file in connection with any offering of Securities by selling securityholders will include the following information:

- the names of the selling securityholders;
- the number or amount of Securities owned, controlled or directed of the class being distributed by each selling securityholder;
- the number or amount of Securities of the class being distributed for the account of each selling securityholder;
- the number or amount of Securities of any class to be owned, controlled or directed by the selling securityholders after the distribution and the percentage that number, or amount represents of the total number of our outstanding Securities;
- whether the Securities are owned by the selling securityholders both of record and beneficially, of record only, or beneficially only;
- the Prospectus Supplement will contain, if applicable, the disclosure required by Item 1.11 of Form 44-101F1 - *Short Form Prospectus*, and, if applicable, the selling securityholders will file a non-issuer's submission to jurisdiction form with the corresponding Prospectus Supplement; and
- all other information that is required to be included in the applicable Prospectus Supplement.

## USE OF PROCEEDS

The net proceeds to the Company from any offering of Securities and the proposed use of those proceeds will be set forth in the applicable Prospectus Supplement relating to that offering of Securities. Among other potential uses, the Company may use the net proceeds from the sale of Securities for general corporate purposes, capital projects and potential future acquisitions and international expansion. In addition, the Securities may be offered and issued in consideration for the acquisition of other businesses, assets or securities by the Company or one of its subsidiaries. For more information regarding the Company's business plans and objectives and plans for capital projects, see "*Description of Business*" in the AIF, incorporated herein by reference. The consideration for any such acquisition may consist of the Securities separately, a combination of Securities or any combination of, among other things, Securities, cash and assumption of liabilities. The Company will not receive any proceeds from any sale of any Securities by the selling securityholders. Management of the Company will retain broad discretion in allocating the net proceeds of any offering of Securities by the Company under this Prospectus and the Company's actual use of the net proceeds will vary depending on the availability and suitability of investment opportunities and its operating and capital needs from time to time. All expenses relating to an offering of Securities and any compensation paid to underwriters, dealers or agents, as the case may be, will be paid out of the proceeds from the sale of Securities, unless otherwise stated in the applicable Prospectus Supplement, provided that certain expenses in any secondary offering may be paid by the Company. See "*Risk Factors - Discretion in the use of proceeds*".

**We have incurred operating losses and negative operating cash flow in the past and may incur operating losses and negative operating cash flows in the future. We expect to use the net proceeds from the sale of Securities in pursuit of our ongoing general business objectives. To that end, a substantial portion of the net proceeds from the sale of Securities are expected to be allocated to working capital requirements and to the continuing development and marketing of our proprietary brands and core products. To the extent that we have negative operating cash flows in future periods, we may need to deploy a portion of the net proceeds from the sale of Securities and/or existing working capital to fund such negative cash flow. See "*Risk Factors*".**

The Company may, from time to time, issue securities (including Securities) other than pursuant to this Prospectus.

## DESCRIPTION OF SECURITIES

The following describes the material terms of the Company's share capital and a brief summary of certain general terms and provisions of the Securities as at the date of this Prospectus. The summary does not purport to be complete, is indicative only and is qualified in its entirety by reference to, the terms and provisions of our notice of articles and articles, as amended. The specific terms of any Securities to be offered under this Prospectus, and the extent to which the general terms described in this Prospectus apply to such Securities, will be set forth in the applicable Prospectus Supplement. Moreover, a Prospectus Supplement relating to a particular offering of Securities may include terms pertaining to the Securities being offered thereunder that are not within the terms and parameters described in this Prospectus. The Securities will not include any novel derivatives or asset-backed securities as discussed under Part 4 of National Instrument 44-102 – *Shelf Distributions* (“NI 44-102”).

The Company is authorized to issue an unlimited number of Subordinate Voting Shares. As of December 1, 2021, the Company had 182,870,964 Subordinate Voting Shares issued and outstanding. There are no other issued and outstanding shares.

### *Voting Rights*

All holders of Shares will be entitled to receive notice of any meeting of shareholders of the Company, and to attend, vote and speak at such meetings, except those meetings at which only holders of a specific class of shares are entitled to vote separately as a class under the *Business Corporations Act* (British Columbia), as amended.

On all matters upon which holders of Shares are entitled to vote: each Subordinate Voting Share is entitled to one vote per Subordinate Voting Share.

The Subordinate Voting Shares are “restricted securities” within the meaning of such term under applicable Canadian securities laws.

### *Rights Upon Dissolution or Winding Up*

In the event of the liquidation, dissolution or winding-up of the Company, whether voluntarily or involuntarily, or any other distribution of the assets of the Company among its shareholders for the purpose of winding up its affairs, the holders of Shares will, subject to the prior rights of the holder of any shares of the Company ranking in priority to the Shares, be entitled to participate ratably, on an as-converted to Subordinate Voting Share basis, along with the other holders of Shares.

### *Pre-Emptive or Redemption Rights*

Holders of Shares do not have any pre-emptive or redemption rights

### *Authorization of Superior Preference Shares*

Consent of the holders of a majority of the outstanding Subordinate Voting Shares will be required for any action that authorizes or creates shares of any class having preferences superior to or on a parity with the Subordinate Voting Shares.

## **Warrants**

As of the date of this Prospectus, the Company has 69,419,758 warrants outstanding to purchase 69,419,758 Subordinate Voting Shares. Such outstanding warrants were issued by private placement, in connection with certain debt and capital raises by the Company, in consideration for consulting, brokerage and other services provided to the Company. The Company may issue additional Warrants, separately or together with Subordinate Voting Shares, Subscription Receipts, Debt Securities, Convertible Securities or Units, or any

combination thereof, as the case may be. The specific terms and provisions that will apply to any Warrants that may be offered by us pursuant to this Prospectus will be set forth in the applicable Prospectus Supplement. This description will include, where applicable:

- the number of Warrants offered;
- the price or prices, if any, at which the Warrants will be issued;
- the currency at which the Warrants will be offered and in which the exercise price under the Warrants may be payable;
- upon exercise of the Warrant, the events or conditions under which the amount of Securities may be subject to adjustment;
- the date on which the right to exercise such Warrants shall commence and the date on which such right shall expire;
- if applicable, the identity of the Warrant agent;
- whether the Warrants will be listed on any securities exchange;
- whether the Warrants will be issued with any other Securities and, if so, the amount and terms of these Securities;
- any minimum or maximum subscription amount;
- whether the Warrants are to be issued in registered form, “book-entry only” form, non-certificated inventory system form, bearer form or in the form of temporary or permanent global securities and the basis of exchange, transfer and ownership thereof;
- any material risk factors relating to such Warrants and any other Securities to be issued upon exercise of the Warrants;
- any other rights, privileges, restrictions and conditions attaching to the Warrants and the Securities to be issued upon exercise of the Warrants; and
- any other material terms or conditions of the Warrants and the Securities to be issued upon exercise of the Warrants.

The terms and provisions of any Warrants offered under a Prospectus Supplement may differ from the terms described above and may not be subject to or contain any or all of the terms described above.

Prior to the exercise of any Warrants, holders of such Warrants will not have any of the rights of holders of the Securities purchasable upon such exercise, including the right to receive payments of dividends or the right to vote such underlying securities.

### **Subscription Receipts**

As of the date of this Prospectus, the Company has no Subscription Receipts outstanding. The Company may issue Subscription Receipts, separately or together, with Subordinate Voting Shares, Warrants, Debt Securities, Convertible Securities or Units or any combination thereof, as the case may be. The particular terms and provisions of the Subscription Receipts as may be offered pursuant to this Prospectus will be set forth in the applicable Prospectus Supplement pertaining to such offering of Subscription Receipts, and the extent to which the general terms and provisions described below may apply to such Subscription Receipts will be described in the applicable Prospectus Supplement.

The Subscription Receipts may be issued under a subscription receipt agreement. The applicable Prospectus Supplement will include details of the subscription receipt agreement, if any, governing the Subscription Receipts being offered. The Company will file a copy of the subscription receipt agreement, if any, relating to an offering of Subscription Receipts with the relevant securities regulatory authorities in Canada after it has been entered into by the Company.

The specific terms and provisions that will apply to any Subscription Receipts that may be offered by us pursuant to this Prospectus will be set forth in the applicable Prospectus Supplement. This description will include, where applicable:

- the number of Subscription Receipts offered;
- the price or prices, if any, at which the Subscription Receipts will be issued;
- the manner of determining the offering price(s);
- the currency at which the Subscription Receipts will be offered and whether the price is payable in installments;
- the Securities into which the Subscription Receipts may be exchanged;

- conditions to the exchange of Subscription Receipts into other Securities and the consequences of such conditions not being satisfied;
- the number of Securities that may be issued upon the exchange of each Subscription Receipt and the price per Security or the aggregate principal amount and the events or conditions under which the amount of Securities may be subject to adjustment;
- the dates or periods during which the Subscription Receipts may be exchanged;
- the circumstances, if any, which will cause the Subscription Receipts to be deemed to be automatically exchanged;
- provisions applicable to any escrow of the gross or net proceeds from the sale of the Subscription Receipts plus any interest or income earned thereon, and for the release of such proceeds from such escrow;
- if applicable, the identity of the Subscription Receipt agent;
- whether the Subscription Receipts will be listed on any securities exchange;
- whether the Subscription Receipts will be issued with any other Securities and, if so, the amount and terms of these Securities;
- any minimum or maximum subscription amount;
- whether the Subscription Receipts are to be issued in registered form, “book-entry only” form, non-certificated inventory system form, bearer form or in the form of temporary or permanent global securities and the basis of exchange, transfer and ownership thereof;
- any material risk factors relating to such Subscription Receipts and the Securities to be issued upon exchange of the Subscription Receipts;
- any other rights, privileges, restrictions and conditions attaching to the Subscription Receipts and the Securities to be issued upon exchange of the Subscription Receipts; and
- any other material terms or conditions of the Subscription Receipts and the Securities to be issued upon exchange of the Subscription Receipts.

The terms and provisions of any Subscription Receipts offered under a Prospectus Supplement may differ from the terms described above and may not be subject to or contain any or all of the terms described above.

Prior to the exchange of any Subscription Receipts, holders of such Subscription Receipts will not have any of the rights of holders of the Securities for which the Subscription Receipts may be exchanged, including the right to receive payments of dividends or the right to vote such underlying securities.

## **Debt Securities**

As of the date of this Prospectus, the Company has 68,218 outstanding 10% Senior Secured Notes denominated in \$1,000 for an aggregate principal amount of \$68,218,000 which are traded on the CSE. The Company also has an additional \$6,975,000 aggregate principal amount of 10% senior secured notes currently outstanding, none of which are traded on any exchange. All such outstanding Debt Securities were issued by private placement in connection with the previous debt financings. The Company may issue Debt Securities, separately or together, with Subordinate Voting Shares, Warrants, Subscription Receipts, Convertible Securities or Units or any combination thereof, as the case may be. The particular terms and provisions of the Debt Securities as may be offered pursuant to this Prospectus will be set forth in the applicable Prospectus Supplement pertaining to such offering of Debt Securities, and the extent to which the general terms and provisions described below may apply to such Debt Securities will be described in the applicable Prospectus Supplement.

The following is a brief summary of certain general terms and provisions of the Debt Securities that may be offered pursuant to this Prospectus. This summary does not purport to be complete.

Debt Securities may be offered separately or in combination with one or more other Securities. The Company may, from time to time, issue debt securities and incur additional indebtedness other than through the issuance of Debt Securities pursuant to this Prospectus.

Except as otherwise specified in the applicable Prospectus Supplement, the Debt Securities will constitute the direct, unconditional and unsecured obligations of the Company and shall rank *pari passu* and ratably without preference among themselves and *pari passu* with all other unsecured and unsubordinated obligations of the Company.

The applicable Prospectus Supplement will describe the specific terms relating to such Debt Securities and the terms of the offering, including, where applicable, some or all of the following, among other matters:

- the title of the Debt Securities;
- any limit on the aggregate principal amount of the Debt Securities and, if no limit is specified, the Company will have the right to re-open such series for the issuance of additional Debt Securities from time to time;
- the date or dates, or the method by which such date or dates will be determined or extended, on which the principal (and premium, if any) of the Debt Securities of the series is payable;
- the rate or rates at which the Debt Securities of the series will bear interest, if any, or the method by which such rate or rates will be determined, whether such interest will be payable in cash or additional Debt Securities of the same series or will accrue and increase the aggregate principal;
- amount outstanding of such series, the date or dates from which such interest will accrue, or the method by which such date or dates will be determined;
- the place or places the Company will pay principal, premium and interest, if any, and the place or places where Debt Securities can be presented for registration of transfer, exchange or conversion;
- the period or periods within which, the price or prices at which, the currency in which, and other terms and conditions upon which Debt Securities of the series may be redeemed, in whole or in part, at the option of the Company, if the Company is to have that option;
- whether the Company will be obligated to redeem, repay or repurchase the Debt Securities pursuant to any sinking or other provision, or at the option of a holder and the terms and conditions of such redemption, repayment or repurchase;
- the denominations in which the Company will issue any registered Debt Securities, if other than denominations of \$2,000 and any multiple of \$1,000 and, if other than denominations of \$5,000, the denominations in which any unregistered Debt Security will be issuable;
- the applicability of, and any changes or additions to, the provisions for defeasance;
- whether the holders of any series of Debt Securities have special rights if specified events occur;
- any deletions from, modifications of or additions to the events of default or covenants;
- whether the Company will issue the Debt Securities as unregistered securities, registered securities or both;
- the terms, if any, for any conversion or exchange of the Debt Securities for any other securities;
- whether payment of the Debt Securities will be guaranteed by any other person;
- whether the payment of principal, interest and premium, if any, on the Debt Securities will be the Company's senior, senior subordinated or subordinated obligations; and
- any other terms, conditions, rights and preferences (or limitations on such rights and preferences).

### **Convertible Securities**

The Company may issue Convertible Securities, separately or together, with Subordinate Voting Shares, Warrants, Subscription Receipts, Debt Securities or Units or any combination thereof, as the case may be. The particular terms and provisions of the Convertible Securities as may be offered pursuant to this Prospectus will be set forth in the applicable Prospectus Supplement pertaining to such offering of Convertible Securities, and the extent to which the general terms and provisions described below may apply to such Convertible Securities will be described in the applicable Prospectus Supplement.

The following is a brief summary of certain general terms and provisions of the Convertible Securities that may be offered pursuant to this Prospectus. This summary does not purport to be complete.

The Convertible Securities will be convertible or exchangeable into Subordinate Voting Shares and/or other Securities. The Convertible Securities convertible or exchangeable into Subordinate Voting Shares and/or other Securities may be offered separately or together with other Securities, as the case may be. The applicable Prospectus Supplement will include details of the agreement, indenture or other instrument to which such Convertible Securities will be created and issued.

Each applicable Prospectus Supplement will set forth the terms and other information with respect to the Convertible Securities being offered thereby, which may include, without limitation, the following (where applicable):

- the number of such Convertible Securities offered;
- the price at which such Convertible Securities will be offered;
- the procedures for the conversion or exchange of such Convertible Securities into or for Subordinate Voting Shares and/or other Securities;
- the number of Subordinate Voting Shares and/or other Securities that may be issued upon the conversion or exchange of such Convertible Securities;
- the period or periods during which any conversion or exchange may or must occur;
- the designation and terms of any other Convertible Securities with which such Convertible Securities will be offered, if any;
- the gross proceeds from the sale of such Convertible Securities;
- whether the Convertible Securities will be listed on any securities exchange;
- whether the Convertible Securities are to be issued in registered form, “book-entry only” form, bearer form or in the form of temporary or permanent global securities and the basis of exchange, transfer and ownership thereof;
- certain material Canadian tax consequences of owning the Convertible Securities; and
- any other material terms and conditions of the Convertible Securities.

## Units

As of the date of this Prospectus, the Company has no Units outstanding. The Company may issue Units, separately or together, with Subordinate Voting Shares, Warrants, Subscription Receipts, Debt Securities or Convertible Securities or any combination thereof, as the case may be. Each Unit would be issued so that the holder of the Unit is also the holder of each Security comprising the Unit. Thus, the holder of a Unit will have the rights and obligations of a holder of each applicable Security. The specific terms and provisions that will apply to any Units that may be offered by us pursuant to this Prospectus will be set forth in the applicable Prospectus Supplement. This description will include, where applicable:

- the number of Units offered;
- the price or prices, if any, at which the Units will be issued;
- the manner of determining the offering price(s);
- the currency at which the Units will be offered;
- the Securities comprising the Units;
- whether the Units will be issued with any other Securities and, if so, the amount and terms of these Securities;
- any minimum or maximum subscription amount;
- whether the Units and the Securities comprising the Units are to be issued in registered form, “book-entry only” form, non-certificated inventory system form, bearer form or in the form of temporary or permanent global securities and the basis of exchange, transfer and ownership thereof;
- any material risk factors relating to such Units or the Securities comprising the Units;
- any other rights, privileges, restrictions and conditions attaching to the Units or the Securities comprising the Units; and
- any other material terms or conditions of the Units or the Securities comprising the Units, including whether and under what circumstances the Securities comprising the Units may be held or transferred separately.

The terms and provisions of any Units offered under a Prospectus Supplement may differ from the terms described above and may not be subject to or contain any or all of the terms described above.

### **CONSOLIDATED CAPITALIZATION**

Since September 30, 2021, the date of the Company's most recently filed interim financial statements, there have been no material changes to the Company's share and loan capitalization on a consolidated basis except for the conversion of the Super Voting Shares and the Multiple Voting Shares into Subordinate Voting Shares in accordance with the terms of the Super Voting Shares and Multiple Voting Shares.

The applicable Prospectus Supplement will describe any material change, and the effect of such material change, on the share and loan capitalization of the Company that will result from the issuance of Securities pursuant to such Prospectus Supplement.

### **EARNINGS COVERAGE RATIOS**

The applicable Prospectus Supplement will provide, as required, the earnings coverage ratios with respect to the issuance of Securities pursuant to such Prospectus Supplement.

### **PLAN OF DISTRIBUTION**

We may offer and sell Securities directly to one or more purchasers through agents or through underwriters or dealers designated by us from time to time. We may distribute the Securities from time to time in one or more transactions at fixed prices (which may be changed from time to time), at market prices prevailing at the times of sale, at varying prices determined at the time of sale, at prices related to prevailing market prices or at negotiated prices. A description of such pricing will be disclosed in the applicable Prospectus Supplement. We may offer Securities in the same offering, or we may offer Securities in separate offerings.

This Prospectus may also, from time to time, relate to the offering of our Securities by certain selling securityholders. The selling securityholders may sell all or a portion of our Securities beneficially owned by them and offered thereby from time to time directly or through one or more underwriters, broker-dealers or agents. Our Securities may be sold by the selling securityholders in one or more transactions at fixed prices (which may be changed from time to time), at market prices prevailing at the time of the sale, at varying prices determined at the time of sale, at prices related to prevailing market prices or at negotiated prices.

A Prospectus Supplement will describe the terms of each specific offering of Securities, including: (i) the terms of the Securities to which the Prospectus Supplement relates, including the type of Security being offered; (ii) the name or names of any agents, underwriters or dealers involved in such offering of Securities; (iii) the name or names of any selling securityholders; (iv) the purchase price of the Securities offered thereby and the proceeds to, and the portion of expenses borne by, the Company from the sale of such Securities; (v) any agents' commission, underwriting discounts and other items constituting compensation payable to agents, underwriters or dealers; and (vi) any discounts or concessions allowed or re-allowed or paid to agents, underwriters or dealers. The Securities may be offered and issued in consideration for the acquisition of other businesses, assets or securities by the Company or one of its subsidiaries. The consideration for any such acquisition may consist of the Securities separately, a combination of Securities or any combination of, among other things, Securities, cash and assumption of liabilities.

If underwriters are used in an offering, the Securities offered thereby may be acquired by the underwriters for their own account and may be resold from time to time in one or more transactions, including negotiated transactions, at a fixed public offering price or at varying prices determined at the time of sale. The obligations of the underwriters to purchase Securities, if applicable, will be subject to the conditions precedent agreed upon by the parties.

The Securities may also be sold (i) directly by the Company or the selling securityholders at such prices and upon such terms as agreed to, or (ii) through agents designated by the Company or the selling securityholders from time to time. Any agent involved in the offering and sale of the Securities in respect of which this Prospectus is delivered will be named, and any commissions payable by the Company and/or selling securityholder to such agent will be set forth, in the Prospectus Supplement. Unless otherwise indicated in the Prospectus Supplement, any agent is acting on a “best efforts” basis for the period of its appointment.

We and/or the selling securityholders may agree to pay the underwriters, broker-dealers or agents a commission for various services relating to the issue and sale of any Securities offered under any Prospectus Supplement. Underwriters, broker-dealers or agents who participate in the distribution of the Securities may be entitled under agreements to be entered into with the Company and/or the selling securityholders to indemnification by the Company and/or the selling securityholders against certain liabilities, including liabilities under securities legislation, or to contribution with respect to payments which such underwriters, dealers or agents may be required to make in respect thereof. Any public offering price and any discounts or concessions allowed or re-allowed or paid to underwriters, broker-dealers or agents may be changed from time to time.

Each class or series of Warrants, Subscription Receipts, Debt Securities, Convertible Securities and Units will be a new issue of Securities with no established trading market and unless otherwise specified in the applicable Prospectus Supplement, none of the Warrants, Subscription Receipts, Debt Securities, Convertible Securities or Units will be listed on any securities or stock exchange. Unless otherwise specified in the applicable Prospectus Supplement, there is no market through which the Warrants, Subscription Receipts, Debt Securities, Convertible Securities or Units (other than constituent Subordinate Voting Shares) may be sold and purchasers may not be able to resell Warrants, Subscription Receipts, Debt Securities, Convertible Securities or Units (other than constituent Subordinate Voting Shares) purchased under this Prospectus or any Prospectus Supplement. This may affect the pricing of the Warrants, Subscription Receipts, Debt Securities, Convertible Securities or Units in the secondary market, the transparency and availability of trading prices, the liquidity of the securities, and the extent of issuer regulation. Subject to applicable laws, certain dealers may make a market in the Warrants, Subscription Receipts, Debt Securities, Convertible Securities or Units, as applicable, but will not be obligated to do so and may discontinue any market making at any time without notice. No assurance can be given that any dealer will make a market in the Warrants, Subscription Receipts, Debt Securities, Convertible Securities or Units or as to the liquidity of the trading market, if any, for the Warrants, Subscription Receipts, Debt Securities, Convertible Securities or Units.

In connection with any offering of Securities, unless otherwise specified in a Prospectus Supplement, underwriters, broker-dealers or agents may over-allot or effect transactions which stabilize, maintain or otherwise affect the market price of Securities offered at levels other than those which might otherwise prevail on the open market. Such transactions may be commenced, interrupted or discontinued at any time. No underwriter, broker-dealer or agent involved in an “at-the-market distribution” under this Prospectus, no affiliate of such underwriter, broker-dealer or agent, and no person or company acting jointly or in concert with such underwriter, broker-dealer or agent will over-allot Securities in connection with such distribution or effect any other transactions that are intended to stabilize or maintain the market price of the Securities.

#### **PRIOR SALES**

Information in respect of prior sales of the Subordinate Voting Shares or other Securities distributed under this Prospectus and for securities that are convertible or exchangeable into the Subordinate Voting Shares or such other Securities within the previous 12-month period will be provided, as required, in a Prospectus Supplement with respect to the issuance of the Subordinate Voting Shares or other Securities pursuant to such Prospectus Supplement.

#### **TRADING PRICE AND VOLUME**

The Subordinate Voting Shares are currently listed on the CSE under the trading symbol “JUSH” and on the OTCQX Best Market under the trading symbol “JUSHF”. Trading prices and volumes in respect of the Subordinate Voting Shares will be provided, as required, in each Prospectus Supplement.



## **DIVIDENDS**

The Company has no dividend record and does not anticipate paying any dividends on the in the foreseeable future. Dividends paid by the Company would be subject to tax and, potentially, withholdings.

## **TAX CONSIDERATIONS**

Owning any of the Securities may subject holders to tax consequences. The applicable Prospectus Supplement may describe certain Canadian federal income tax considerations generally applicable to an investor acquiring, owning and disposing of any of the Securities offered thereunder, including, in the case of an investor who is not a resident of Canada, Canadian non-resident withholding tax considerations. Prospective investors should consult their own tax advisors prior to deciding to purchase any of the Securities.

## **RISK FACTORS**

Before making an investment decision, prospective purchasers of Securities should carefully consider the information described in this Prospectus and the documents incorporated by reference herein, including the applicable Prospectus Supplement. Additional risk factors relating to a specific offering of Securities may be described in the applicable Prospectus Supplement. Some of the risk factors described herein and in the documents incorporated by reference herein, including the applicable Prospectus Supplement, are interrelated and, consequently, investors should treat such risk factors as a whole. If any event arising from these risks occurs, our business, prospects, financial condition, results of operations and cash flows, and your investment in the Securities could be materially adversely affected. Additional risks and uncertainties of which we currently are unaware or that are unknown or that we currently deem to be immaterial could have a material adverse effect on our business, financial condition and results of operation. We cannot assure you that we will successfully address any or all of these risks.

In addition to the risk factors described elsewhere herein and in the documents incorporated by reference herein, prospective investors should carefully consider the risks below together with the other information provided elsewhere in this Prospectus and the applicable Prospectus Supplement. Prospective investors should consult with their professional advisors to assess any investment in the Company.

### **Risks Related to the Company's Securities**

#### *Return on Securities is not guaranteed*

There is no guarantee that the Securities will earn any positive return in the short-term or long-term. A holding of Securities is speculative and involves a high degree of risk and should be undertaken only by holders whose financial resources are sufficient to enable them to assume such risks and who have no need for immediate liquidity in their investment. A holding of Securities is appropriate only for holders who have the capacity to absorb a loss of some or all of their holdings.

#### *Discretion in the use of proceeds*

Management of the Company will have broad discretion with respect to the timing and application of net proceeds received by the Company from the sale of Securities under this Prospectus or a future Prospectus Supplement and may spend such proceeds in ways that do not improve the Company's results of operations or enhance the value of the Subordinate Voting Shares or its other securities issued and outstanding from time to time. As a result, purchasers will be relying on the ongoing judgment of management as determined from time to time for the application of the proceeds of any such offering. The results and the effectiveness of the application of the net proceeds are uncertain. Any failure by management to apply these funds effectively could result in financial losses that could have a material adverse effect on the Company's business or cause the price of the securities of the Company issued and outstanding from time to time to decline. The Company will not receive any proceeds from any sale of any Securities by selling securityholders in a secondary offering.

### *Dilution*

The offering price of Subordinate Voting Shares or other Securities that are convertible or exchangeable into Subordinate Voting Shares may significantly exceed the net tangible book value per share of the Subordinate Voting Shares. Accordingly, a purchaser of Subordinate Voting Shares or other Securities that are convertible or exchangeable into Subordinate Voting Shares may incur immediate and substantial dilution of his, her or its investment. If outstanding options and warrants to purchase Subordinate Voting Shares are exercised or securities convertible into Subordinate Voting Shares are converted, additional dilution will occur. The Company may sell additional Subordinate Voting Shares or other securities that are convertible or exchangeable into Subordinate Voting Shares in subsequent offerings or may issue additional Subordinate Voting Shares or other securities to finance future acquisitions. The Company cannot predict the size or nature of future sales or issuances of securities or the effect, if any, that such future sales and issuances will have on the market price of the Subordinate Voting Shares. Sales or issuances of substantial numbers of Subordinate Voting Shares or other securities that are convertible or exchangeable into Subordinate Voting Shares, or the perception that such sales or issuances could occur, may adversely affect prevailing market prices of the Subordinate Voting Shares. With any additional sale or issuance of Subordinate Voting Shares or other securities that are convertible or exchangeable into Subordinate Voting Shares, investors will suffer dilution to their voting power and economic interest in the Company. Furthermore, to the extent holders of the Company's stock options or other convertible securities convert or exercise their securities and sell the Subordinate Voting Shares they receive, the trading price of the Subordinate Voting Shares on the CSE and OTCQX Best Market may decrease due to the additional amount of Subordinate Voting Shares available in the market.

### *Liquidity*

There is currently no market through which the Securities, other than the Subordinate Voting Shares and the 10% Senior Secured Notes, may be sold and, unless otherwise specified in the applicable Prospectus Supplement, none of the Warrants, Subscription Receipts, Debt Securities, Convertible Securities or Units (other than in respect of constituent Subordinate Voting Shares and the 10% Senior Secured Notes) will be listed on any securities or stock exchange or any automated dealer quotation system. As a consequence, purchasers may not be able to resell Warrants, Subscription Receipts, Debt Securities, Convertible Securities or Units purchased under this Prospectus or any Prospectus Supplement. This may affect the pricing of the Securities, other than the Subordinate Voting Shares, in the secondary market, the transparency and availability of trading prices, the liquidity of these securities and the extent of issuer regulation. There can be no assurance that an active trading market for the Securities, other than the Subordinate Voting Shares, will develop or, if developed, that any such market, including for the Subordinate Voting Shares, will be sustained.

### *Negative Cash Flow from Operations*

The Company has sustained net losses from operations and negative cash flow from operating activities in the past and may incur such losses and negative operating cash flow in the future. The Company's cash and cash equivalents (including restricted cash) as of September 30, 2021 was approximately \$59 million. Although the Company anticipates it will eventually have positive cash flow from operating activities, to the extent that Company has negative cash flow in any future period, certain of the proceeds from any offering of securities of the Company may be used to fund such negative cash flow from operating activities.

### *Impact on resales into the United States*

The Subordinate Voting Shares have not been, and may never be, registered under the United States Securities Act of 1933, as amended (the "U.S. Securities Act"). As such, the Subordinate Voting Shares may be offered only to non-U.S. persons (as defined in Regulation S under the U.S. Securities Act) outside the United States in transactions exempt from the registration requirements of the U.S. Securities Act in reliance on Regulation S, to qualified institutional buyers (as defined in Rule 144A under the U.S. Securities Act) in the United States pursuant to Rule 144A under the U.S. Securities Act, or otherwise in transactions that are exempt from the registration requirements set forth under the U.S. Securities Act. Accordingly, the Subordinate Voting Shares may be "restricted securities" as defined in Rule 144 under the U.S. Securities Act. The Subordinate Voting Shares may not be able to be offered, sold or delivered in the United States or to, or for the account or benefit of, any U.S. person, unless the transfer is registered under the U.S. Securities Act. The Company

has no current intention to register the Subordinate Voting Shares under the U.S. Securities Act. If the Company does not register the Subordinate Voting Shares under the U.S. Securities Act, its shareholders will face restrictions in re-sale of the Subordinate Voting Shares, particularly in the United States or to U.S. persons. The Subordinate Voting Shares may bear a legend describing restrictions on transfer to U.S. persons and prohibiting hedging transactions in the Subordinate Voting Shares unless in compliance with the U.S. Securities Act.

#### *Non-compliance with Regulation S under the U.S. Securities Act*

Subordinate Voting Shares may be offered and sold in an offshore transaction pursuant to Rule 902 under the U.S. Securities Act, and such Subordinate Voting Shares may qualify as Category 1 securities under Rule 903 of Regulation S. Should the U.S. Securities Exchange Commission (“SEC”) determine that the Company did not comply with the requirements of Regulation S in respect of such an offering, the secondary market in the Subordinate Voting Shares could be adversely affected. In such case, the Company may be required to register its Subordinate Voting Shares with the SEC, which would entail significant expense to the Company and a significant amount of time on behalf of the Company’s directors and senior management. Furthermore, the Company and its directors could also be subject to criminal, civil or administrative proceedings.

### **INTERESTS OF EXPERTS**

The following persons or companies are named as having prepared or certified a report, valuation, statement or opinion in this Prospectus, either directly or in a document incorporated herein by reference, and whose profession or business gives authority to the report, valuation, statement or opinion made by the expert.

Marcum LLP, the Company’s current auditor, was appointed on June 2, 2021. Marcum LLP has confirmed that it is independent of the Company within the meaning of the SEC’s rules on auditor independence. MNP LLP has confirmed that it is independent of the Company within the meaning of the Chartered Professional Accountants of Ontario Code of Professional Conduct.

### **LEGAL MATTERS**

Unless otherwise specified in a Prospectus Supplement relating to any Securities offered, certain legal matters relating to an offering of Securities will be passed upon by Stikeman Elliott LLP on behalf of the Company. Duane Morris LLP (Philadelphia, Pennsylvania) has acted as U.S. regulatory counsel to the Company in respect of certain matters. As at the date hereof, the partners and associates of each of Stikeman Elliott LLP, and Duane Morris LLP, as respective groups, beneficially own, directly or indirectly, less than 1% of the outstanding Shares.

In addition, certain legal matters in connection with any offering of Securities will be passed upon for any underwriters, dealers or agents by counsel to be designated at the time of the offering by such underwriters, dealers or agents, as the case may be.

### **EXEMPTIONS**

Pursuant to a decision of the Autorité des marchés financiers dated November 12, 2021, the Company was granted a permanent exemption from the requirement to translate into French this prospectus as well as the documents incorporated by reference therein and any prospectus supplement to be filed in relation to an “at-the-market distribution”. This exemption is granted on the condition that this prospectus and any prospectus supplement (other than in relation to an “at-the-market distribution”) be translated into French if the Company offers securities to Québec purchasers in connection with an offering other than in relation to an “at-the-market distribution”.

## AUDITORS, REGISTRAR AND TRANSFER AGENT

Our auditors are Marcum LLP, an independent registered public accounting firm, located at 500 W. Monroe Street, Suite 2000 Chicago, IL 60661.

The transfer agent and registrar of the Company is Odyssey Trust Company, located at the United Kingdom Building, 323-409 Granville Street, Vancouver, British Columbia V6C 1T2.

## PURCHASERS' STATUTORY AND CONTRACTUAL RIGHTS OF WITHDRAWAL AND RESCISSION

Securities legislation in certain of the provinces and territories of Canada provides purchasers with the right to withdraw from an agreement to purchase securities. This right may be exercised within two business days after receipt or deemed receipt of a prospectus or a prospectus supplement relating to the securities purchased by a purchaser and any amendments thereto. In several of the provinces and territories, the securities legislation further provides the purchaser with remedies for rescission or, in some jurisdictions, revisions of the price or damages if the prospectus or a prospectus supplement relating to the securities purchased by a purchaser and any amendments thereto contain a misrepresentation or is not delivered to the purchaser, provided that such remedies for rescission, revisions of the price or damages are exercised by the purchaser within the time limit prescribed by the securities legislation of the purchaser's province or territory. The purchaser should refer to any applicable provisions of the securities legislation of the purchaser's province or territory for the particulars of these rights or consult with a legal advisor.

In addition, original purchasers of convertible, exchangeable or exercisable Securities (unless the Securities are reasonably regarded by the Company as incidental to the applicable offering as a whole) will have a contractual right of rescission against the Company in respect of the conversion, exchange or exercise of the convertible, exchangeable or exercisable Security. This contractual right of rescission will be consistent with the statutory right of rescission described under section 130 of the *Securities Act* (Ontario) (the "Securities Act") and is in addition to any other right or remedy available to original Canadian purchasers under Section 130 of the Securities Act or otherwise by law.

The contractual right of rescission will be further described in any applicable Prospectus Supplement, but will, in general, entitle such original purchasers to receive the amount paid for the applicable convertible, exchangeable or exercisable Security (and any additional amount paid upon conversion, exchange or exercise) upon surrender of the underlying Securities acquired thereby, in the event that this Prospectus (as supplemented or amended) contains a misrepresentation, provided that (i) the conversion, exchange or exercise takes place within 180 days of the date of the purchase of the convertible, exchangeable or exercisable Security under this Prospectus, and (ii) the right of rescission is exercised within 180 days of the date of the purchase of the convertible, exchangeable or exercisable Security under this Prospectus.

In an offering of convertible, exchangeable or exercisable Subscription Receipts, Convertible Securities or Warrants, investors are cautioned that the statutory right of action for damages for a misrepresentation contained in the Prospectus is limited, in certain provincial and territorial securities legislation, to the price at which convertible, exchangeable or exercisable Subscription Receipts, Convertible Securities or Warrants are offered to the public under the prospectus offering. This means that, under the securities legislation of certain provinces and territories, if the purchaser pays additional amounts upon the conversion, exchange or exercise of the Security, those amounts may not be recoverable under the statutory right of action for damages that applies in those provinces or territories. The purchaser should refer to any applicable provisions of the securities legislation of the purchaser's province or territory for the particulars of this right of action for damages or consult with a legal advisor.

## ENFORCEMENT OF JUDGMENTS AGAINST FOREIGN PERSONS

The Company's officers and directors, namely James Cacioppo, Louis J. Barack, Edward Kremer, Leonardo Garcia-Berg, Benjamin Cross, Stephen Monroe, Peter Adderton and Marina Hahn reside outside of Canada. Each of these persons has appointed 152928 Canada Inc., c/o Stikeman Elliott LLP, 5300 Commerce Court West, 199 Bay Street, Toronto, Ontario M5L 1B9, as agent for service of process.

Purchasers are advised that it may not be possible for investors to enforce judgments obtained in Canada against any person that resides outside of Canada, even if the party has appointed an agent for service of process.

### PROMOTERS

Both (i) James Cacioppo, Co-Founder, Chairman and Chief Executive Officer of the Company and (ii) Louis J. Barack, Co-Founder and President of the Company may be considered promoters of the Company within the meaning of Canadian securities legislation. As of the date hereof, these individuals, either directly or indirectly, own, control or direct the number Subordinate Voting Shares of the Company and options or warrants to purchase securities of the Company set forth in the table below:

Name of Promoter	Number of each class of securities of the Company owned, controlled or directed, directly or indirectly	Percentage of each class of securities of the Company owned, controlled or directed, directly or indirectly	Number of options or warrants to purchase securities of the Company owned, controlled or directed, directly or indirectly
James Cacioppo	14,412,219 Subordinate Voting Shares	7.88%	20,273,335 Warrants to purchase Subordinate Voting Shares & 5,385,000 Options to purchase Subordinate Voting Shares
Louis J. Barack	2,985,727 Subordinate Voting Shares	1.63%	1,500,000 Warrants to purchase Subordinate Voting Shares & 1,793,000 Options to purchase Subordinate Voting Shares

Mr. Cacioppo, as CEO, and Mr. Barack, as Co-Founder and President, earned \$388,966.28 and \$308,333.29, respectively, as compensation from the Company in 2020. In addition to monetary compensation, Mr. Cacioppo received restricted Subordinate Voting Shares worth \$3,562,500.33 and a loan in the amount of \$1,212,275.05 and Mr. Barack received restricted Subordinate Voting Shares worth \$1,330,765 and a loan in the amount of \$322,200.00. Other than as set forth herein, neither Mr. Cacioppo nor Mr. Barack received any additional money, property, contracts, options or rights of any kind from the Company or from a subsidiary of the Company in 2020.

#### *Management Cease Trade Order*

On April 21, 2021, the Company applied to the Ontario Securities Commission (the "OSC"), as principal regulator of the Company, for the imposition of a management cease trade order (the "MCTO") under National Policy 12-203 – *Management Cease Trade Orders* since, due to the Company's former auditor not being able to complete its annual audit procedures in a timely manner, the Company would not be able to file its audited annual financial statements for the year ended December 31, 2020, the related management's discussion and analysis, related CEO and CFO certificates and annual information form for the year ended December 31, 2020 (the "Required Filings") before the required deadline of April 30, 2021. On May 3, 2021, the OSC issued the MCTO, which was rescinded on June 9, 2021 after the Company filed the Required Filings. Mr. Cacioppo was CEO of the Company at the time the MCTO was issued.

## MATERIAL CONTRACTS

The following are the material contracts of the Company, other than contracts entered into in the ordinary course of business:

- (a) Letter Agreement by and between Tanzania Minerals Corp. and Jushi Inc. pertaining to that certain reverse takeover transaction completed on June 6, 2019;
- (b) an Equity Purchase Agreement by and among Jushi Inc, Franklin Bioscience – Penn, LLC and its subsidiaries and the members thereof, dated June 4, 2019 for the acquisition by Jushi Inc of 100% of the issued and outstanding membership interests of Franklin Bioscience – Penn, LLC and its subsidiaries;
- (c) a Membership Interest Purchase and Exchange Agreement by and among the Company, Jushi VA, LLC, Dalitso and the members thereof, dated June 28, 2019, and certain ancillary agreements for the acquisition by Jushi VA, LLC of 61.765% of the membership interests of Dalitso; and
- (d) the Trust Indenture by and between the Company and Odyssey Trust Company, dated November 20, 2020, regarding the 10% Senior Secured Notes due January 15, 2023.
- (e) a Merger and Membership Interest Purchase Agreement to acquire Nature’s Remedy of Massachusetts, Inc and certain of its affiliates, a vertically-integrated single state operator in Massachusetts, dated April 16, 2021.
- (f) The Credit Agreement between the Company, Other Loan Parties, and Roxbury, LP, dated October 20, 2021.

To the extent that cannabis-related licenses held by the Company or its subsidiaries could also be considered to be material contracts, the following licenses are the material contracts of the Company:

State	Entity Holding License	State Licensing Authority	State License	Activity Under License
Illinois	Beyond Hello IL, LLC <sup>1</sup>	Department of Financial and Professional Regulation Division of Professional Regulation	Registered Adult Use Dispensing Organization	Cannabis Dispensing (Adult Use)
Illinois	Beyond Hello IL, LLC	Department of Financial and Professional Regulation Division of Professional Regulation	Registered Medical Cannabis Dispensing Organization	Cannabis Dispensing (Medical)
Illinois	Beyond Hello IL, LLC	Department of Financial and Professional Regulation Division of Professional Regulation	Registered Adult Use Dispensing Organization	Cannabis Dispensing (Adult Use)
Illinois	Beyond Hello IL, LLC	Department of Financial and Professional Regulation Division of Professional Regulation	Registered Medical Cannabis Dispensing Organization	Cannabis Dispensing (Medical)
Illinois	Beyond Hello IL, LLC	Department of Financial and Professional Regulation Division of Professional Regulation	Registered Adult Use Dispensing Organization	Cannabis Dispensing (Adult Use)
Illinois	Beyond Hello IL, LLC	Department of Financial and Professional Regulation Division of Professional Regulation	Registered Adult Use Dispensing Organization	Cannabis Dispensing (Adult Use)

State	Entity Holding License	State Licensing Authority	State License	Activity Under License
Massachusetts	Jushi MA, Inc.	Commonwealth of Massachusetts Cannabis Control Commission	Adult Use Marijuana Cultivation, Tier 4 / Indoor	Cannabis Growing (Adult Use)
Massachusetts	Jushi MA, Inc.	Commonwealth of Massachusetts Cannabis Control Commission	Adult Use Marijuana Product Manufacturer	Cannabis Processing (Adult Use)
Massachusetts	Jushi MA, Inc.	Commonwealth of Massachusetts Cannabis Control Commission	Medical Marijuana Retail	Cannabis Dispensing (Medical)
Massachusetts	Jushi MA, Inc.	Commonwealth of Massachusetts Cannabis Control Commission	Adult Use Marijuana Retail	Cannabis Dispensing (Adult Use)
Massachusetts	Jushi MA, Inc.	Commonwealth of Massachusetts Cannabis Control Commission	Adult Use Marijuana Retail	Cannabis Dispensing (Adult Use)
Massachusetts	Jushi MA, Inc.	Commonwealth of Massachusetts Cannabis Control Commission	Medical Marijuana Cultivation	Cannabis Growing (Medical)
Massachusetts	Jushi MA, Inc.	Commonwealth of Massachusetts Cannabis Control Commission	Medical Marijuana Product Manufacturer	Cannabis Processing (Medical)
Pennsylvania	Franklin Bioscience – PENN, LLC	Commonwealth of Pennsylvania Department of Health Office of Medical Marijuana	Permit to Operate a Medical Marijuana Dispensary Facility	Cannabis Dispensing (Medical)
Pennsylvania	Franklin Bioscience – PENN, LLC	Commonwealth of Pennsylvania Department of Health Office of Medical Marijuana	Permit to Operate a Medical Marijuana Dispensary Facility	Cannabis Dispensing (Medical)
Pennsylvania	Franklin Bioscience – PENN, LLC	Commonwealth of Pennsylvania Department of Health Office of Medical Marijuana	Permit to Operate a Medical Marijuana Dispensary Facility	Cannabis Dispensing (Medical)
Pennsylvania	Pennsylvania Medical Solutions, LLC	Commonwealth of Pennsylvania Department of Health Office of Medical Marijuana	Permit to Operate a Medical Marijuana Grower/Processor Facility	Cannabis Growing and Processing (Medical)
Virginia	Dalitso LLC	Commonwealth of Virginia Board of Pharmacy	Permit to Operate a Medical Cannabis Grower/Processor/Dispensing Facility	Cannabis Growing, Processing and Dispensing (Medical)

Notes:

1. Formerly TGS Illinois, LLC

Copies of the above-noted material contracts are available on the Company's SEDAR profile at [www.sedar.com](http://www.sedar.com).

**CERTIFICATE OF JUSHI HOLDINGS INC.**

Dated: December 2, 2021

This short form prospectus, together with the documents incorporated in this Prospectus by reference, will, as of the date of the last supplement to this Prospectus relating to the securities offered by this Prospectus and the supplement(s), constitute full, true and plain disclosure of all material facts relating to the securities offered by this Prospectus and the supplement(s) as required by the securities legislation of each of the provinces and territories of Canada.

*(Signed) JAMES CACIOPPO*

James Cacioppo

Chairman and Chief Executive Officer

*(Signed) ED KREMER*

Ed Kremer

Chief Financial Officer

On behalf of the Board of Directors

*(Signed) STEPHEN MONROE*

Stephen Monroe

Director

*(Signed) BENJAMIN CROSS*

Benjamin Cross

Director



## CERTIFICATE OF THE PROMOTERS

Dated: December 2, 2021

This short form prospectus, together with the documents incorporated in this Prospectus by reference, will, as of the date of the last supplement to this Prospectus relating to the securities offered by this Prospectus and the supplement(s), constitute full, true and plain disclosure of all material facts relating to the securities offered by this Prospectus and the supplement(s) as required by the securities legislation of each of the provinces and territories of Canada.

*(Signed) JAMES CACIOPPO*

James Cacioppo

*(Signed) LOUIS J. BARACK*

Louis J. Barack