



# **Management's Discussion and Analysis**

**For the six months ended June 30, 2013**

(Financial information expressed in Canadian dollars unless otherwise noted)

## Table of contents

Introduction.....	3
Forward looking information.....	3
Historical information.....	3
Current highlights .....	4
Mining project .....	5
Turner Gold Property .....	5
Market Trends .....	6
Summary of quarterly results .....	7
Results of operations.....	7
Three months ended June 30, 2013 and 2012 .....	7
Six months ended June 30, 2013 and 2012 .....	7
Capital resources and liquidity .....	8
Contractual obligations and rights.....	8
Transactions with related parties .....	9
Off-balance sheet arrangements.....	10
Financial instruments and other instruments .....	10
Currency risk.....	10
Credit risk .....	10
Liquidity risk .....	10
Commodity price risk .....	10
Outstanding share data .....	11
Risks and uncertainties.....	11
No history of earnings .....	11
Title risks .....	11
Exploration and development.....	11
Uninsured or uninsurable risks.....	12
Operating hazards and risks.....	12
Environmental risks, regulations, permits and licenses and other regulatory requirements.....	12
Competition.....	13
Dependence on management and directors.....	13
Fluctuating mineral prices.....	13
Future financing .....	13
Future acquisitions .....	14
Volatility of share price .....	14
Conflicts of interest .....	14
Dividends.....	14
Adverse fluctuations in currency exchange rates .....	14
Current global economic conditions .....	14
Valuation of investment in mineral properties .....	14
Critical accounting policies and estimates.....	15
Statement of compliance .....	15
Statement of compliance analysis.....	15
Exploration and evaluation .....	15
Exploration and evaluation analysis.....	15
Outlook.....	16

## Introduction

This management's discussion and analysis ("MD&A") is dated August 29, 2013 and is in respect of the interim reporting period ended June 30, 2013. All dollar amounts referenced, unless otherwise indicated, are expressed in Canadian dollars and narrative references to financial values are rounded. References to "US\$" mean United States dollars.

The following discussion of the financial condition and results of operations of the Company should be read in conjunction with its consolidated financial statements and related notes for the annual period ended December 31, 2012. This section contains forward-looking statements that involve risks and uncertainties. The Company's actual results may differ materially from those discussed in forward-looking statements as a result of various factors, including those described under "Forward looking information".

## Forward looking information

Certain statements in this MD&A are forward-looking statements or information (collectively "forward-looking statements"). The Company is hereby providing cautionary statements identifying important factors that could cause the actual results to differ materially from those projected in the forward-looking statements. Any statements that express, or involve discussions as to, expectations, beliefs, plans, objectives, assumptions or future events or performance (often, but not always, through the use of words or phrases such as "may", "is expected to", "anticipates", "estimates", "intends", "plans", "projection", "could", "vision", "goals", "objective" and "outlook") are not historical facts and may be forward-looking and may involve estimates, assumptions and uncertainties which could cause actual results or outcomes to differ materially from those expressed in the forward-looking statements.

By their nature, forward-looking statements involve numerous assumptions, inherent risks and uncertainties, both general and specific, which contribute to the possibility that the predicted outcomes may not occur or may be delayed. The risks, uncertainties and other factors, many of which are beyond the control of the Company, that could influence actual results include, but are not limited to: limited operating history; exploration, development and operating risks; regulatory risks; substantial capital requirements and liquidity; financing risks and dilution to shareholders; competition; reliance on management and dependence on key personnel; fluctuating mineral prices and marketability of minerals; title to properties; local resident concerns; no mineral reserves or mineral resources; environmental risks; governmental regulations and processing licenses and permits; conflicts of interest of management; uninsurable risks; exposure to potential litigation; dividends; and other factors beyond the control of the Company.

Furthermore, any forward-looking statement speaks only as of the date on which such statement is made, and, except as required by applicable law, the Company undertakes no obligation to update any forward-looking statement to reflect events or circumstances after the date on which such statement is made or to reflect the occurrence of unanticipated events. New factors emerge from time to time, and it is not possible for management to predict all such factors and to assess in advance the impact of each such factor on the Company's business or the extent to which any factor, or combination of factors, may cause actual results to differ materially from those contained in any forward-looking statement.

## Historical information

Josephine Mining Corp. ("the Company") is a mineral exploration company incorporated under the laws of British Columbia and, together with its subsidiaries, is engaged in the exploration and development of the Turner Gold Property in southern Oregon. The Turner Gold project comprises three patented mining claims and an additional 265 acres of contiguous private land currently owned by General Moly, Inc. In addition, the Company purchased 40 acres of private land to the west of the

property and has an option to purchase an additional 333 acres to the east of the property. The Company also controls 25 mineral lode claims. The Turner Gold deposit was initially discovered in the early 1900s.

In March 2008, the Company completed an initial public offering of 3,000,000 common shares. The Company's shares began trading on the TSX Venture Exchange (the "Exchange") on March 24, 2008, under the trading symbol "GRP.P". Prior to March 24, 2011, the Company was classified as a Capital Pool Company within the meaning ascribed by the Exchange policy and the British Columbia Securities Act.

In March 2010, the Company entered into a letter agreement to purchase all of the issued and outstanding securities of 0854742 B.C. Ltd. The acquisition of 0854742 B.C. Ltd., then known as Josephine Mining Corp., constituted the Company's Qualifying Transaction under the policies of the Exchange. 0854742 was at arm's length to the Company.

On March 24, 2011, the Company completed its Qualifying Transaction, as defined under the rules of the Exchange, when its wholly-owned subsidiary 0890810 B.C. Ltd. ("Subco") amalgamated with 0854742 B.C. Ltd. ("0854742"), formerly known as Josephine Mining Corp. Since the Qualifying Transaction, the Company's sole activities have related to the acquisition and exploration of the Turner Gold Property ("Turner" or the "Project"), including ancillary properties. In connection with the Qualifying Transaction, the Company changed its name to Josephine Mining Corp., ceased to be a Capital Pool Company ("CPC") as defined in Policy 2.4 of the Exchange and commenced trading as a Tier 2 mining issuer on the Exchange on March 29, 2011. On commencement of trading the Company's trading symbol changing from "GRP.H" to "JMC".

## Current highlights

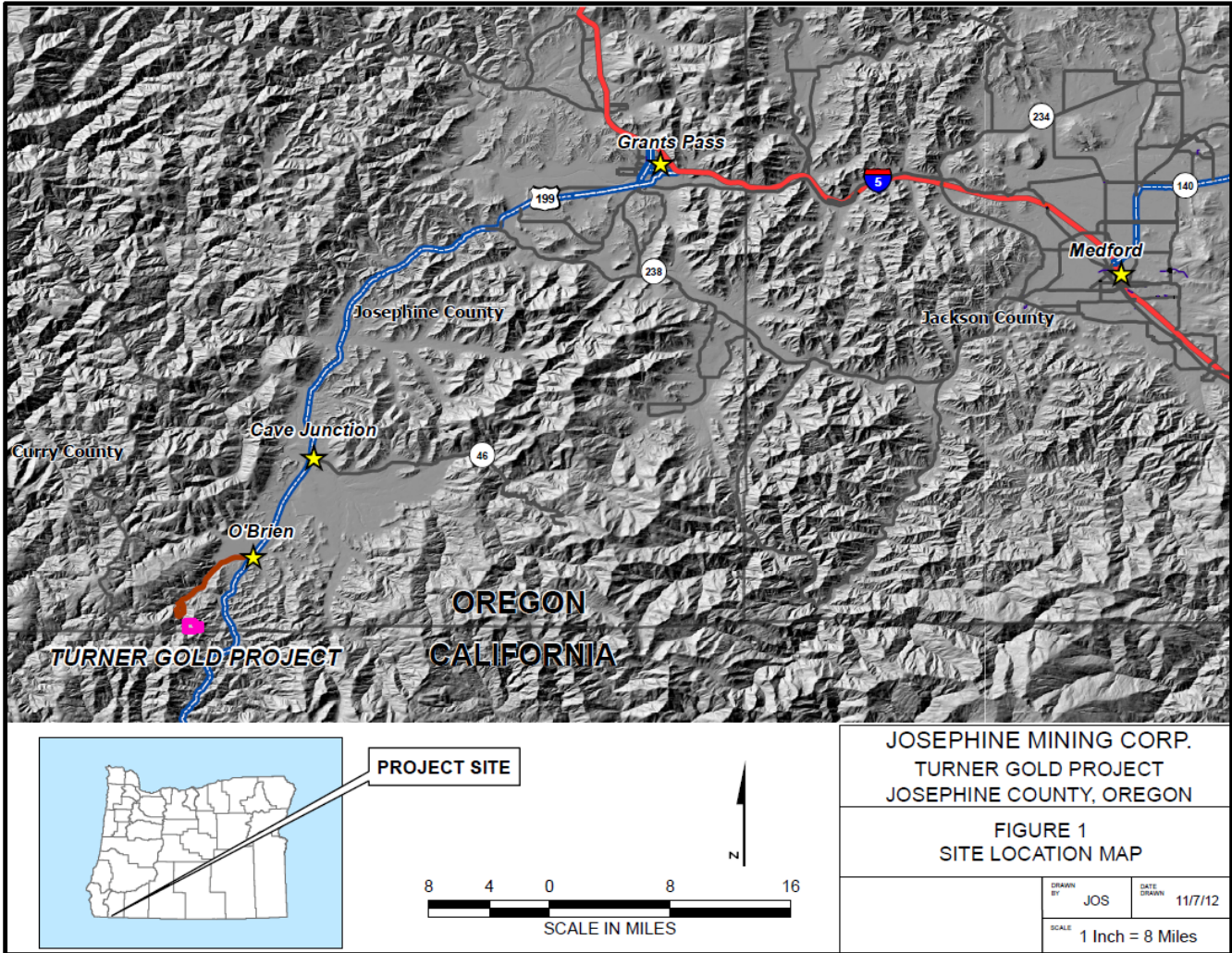
Management is actively seeking sources of funds through an issuance of a combination of debt and equity, the terms of which are in negotiation. The primary goal is to raise enough funds to complete the final Turner acquisition payment of \$600,000, the deadline of which has been extended to December 2, 2013. Discussions with potential lenders, investors and contractual parties are in process at the date of this filing, although no agreements with respect to this financing have been executed. During 2012 and the six months ended June 30, 2013, the Company raised limited funds, through related party debt. At June 30, 2013, the Company had limited cash and a working capital deficit.

The Company is currently updating the Turner resource model to incorporate drilling data obtained in the summer of 2011. The Company has continued with the environmental baseline surveys necessary to obtain the Department of Geology and Mineral Industries (DOGAMI) Operating Permit and recently completed the surface water monitoring component of the permit requirements. In addition, the Company applied for and received the Solid Waste Letter Authorization Permit from the Oregon Department of Environmental Quality to reclaim the drilling sumps at the property. The Company completed the reclamation of the drilling sumps in 2012 and in November of 2012 received the full refund of the reclamation bond held by DOGAMI.

# Mining project

## Turner Gold Property

The Turner Gold Property is the Company’s primary property and the focus of all of its operations to date. The Turner Gold Property is located in southwestern Josephine County, Oregon, approximately 2 miles west of Highway 199 and 40 miles southwest of Grants Pass, Oregon.



The Turner Gold project is a volcanogenic massive sulfide deposit with an indicated and inferred resource of 4.7 million tons. As stated in the October 2012 press release with the updated resource, the indicated resource has increased 42.55% in tonnage and shows metal grades of 1.015% copper, 2.91 g/t gold, 13.3 g/t silver and 2.46 % zinc. Encompassed in the indicated resource are a total of 296,493 contained troy ounces of gold, 70.8 million pounds copper, 1.35 million troy ounces silver and 171.8 million lbs. of zinc or alternately 6.1 g/t equivalent gold (equating to 620,891 equivalent troy ounces of gold contained). With this increase to a total of 4.71 million tons of resource above an increased NSR cutoff grade of \$52/ton, JMC is pleased to report the improved delineation of the resource; with the newly compiled 2011 drilling data, 1.04 million tons of the resource was moved from inferred to the indicated category. Equivalent troy oz/ton gold (“Eq Au”) levels are used to illustrate the combined effect of copper, gold, silver, and zinc in the project in one metal.

---

**Economic Parameters for Turner Gold**

Parameter	Units	Mill
Copper Price per Pound	(US\$)	3.00
Gold Price per Pound	(US\$)	1,200.00
Silver Price per Pound	(US\$)	15.00
Zinc Price per Pound	(US\$)	0.75
Base Mining Cost Per Ton of Material	(US\$)	27.45
Process Cost Per Ton	(US\$)	14.68
General and Administrative Cost Per Ton	(US\$)	2.66
Process Recovery of Copper (Average)	(%)	90.8
Process Recovery of Gold (Average)	(%)	71.9
Process Recovery of Silver (Average)	(%)	83.2
Process Recovery of Zinc (Average)	(%)	75.1
Smelting/Refining Payable for Copper	(%)	96.5
Smelting/Refining Payable for Gold	(%)	97.0
Smelting/Refining Payable for Silver	(%)	77.0
Smelting/Refining Payable for Zinc	(%)	95.0
Gross Royalty	(%)	1.5

---

Source: Parameters described in the Turner Gold Resource and Preliminary Economic Assessment dated November 16, 2009 as revised May 17, 2010 available at [www.sedar.com](http://www.sedar.com) (contents were reviewed by qualified persons; John M. Marek, P.E. of Independent Mining Consultants, Brian W. Buck, P.G. of JBR Environmental Consultants, Michael D. Strickler, P.G. of LithoLogic Resources, Srikant Annavarapu, P.E. of Master Geotech Services, and James J. Moore, P.E.).

**Market Trends**

Copper prices increased significantly between late 2003 and mid-2008, and after a steep decline in late 2008 and early 2009, had generally increased until mid-2013, at which time the prices decreased suddenly. Through the date of this document, the prices in 2013 had demonstrated a limited recovery.

Average annual prices as well as the 2013 average price through the date of this document, for copper and gold are summarized in the table below:

---

Average annual market prices (US\$)		
Year	Copper (lb)	Gold (oz)
2008	3.11	880
2009	2.41	981
2010	3.45	1,233
2011	4.02	1,568
2012	3.63	1,681
2013*	3.36	1,491

---

Source: Monthly spot prices per London PM Fix – Kitco (Gold) and London Metal Exchange (Copper) and [indexmundi.com](http://indexmundi.com).

\* Most current data available through the date of this MD&A



## Summary of quarterly results

	Three months ended				
	June 30, 2013	March 31, 2013	December 31, 2012	September 30, 2012	June 30, 2012
Total operating expenses	\$ 125,326	\$ 205,003	\$ 217,526	\$ 333,904	\$ 495,458
Net loss (income)	163,293	243,497	219,084	(98,936)	461,212
Total comprehensive loss	152,904	254,567	165,555	1,370	403,251
Net loss per common share, basic and diluted	0.01	0.01	0.01	0.00	0.02
Total assets	8,371,570	7,959,841	7,943,743	7,417,559	7,527,058
Total liabilities	1,547,898	1,390,595	1,161,087	591,624	809,168
	March 31, 2012	December 31, 2011	September 30, 2011	June 30, 2011	March 31, 2011
Total operating expenses	\$ 346,786	\$ 780,460	\$ 832,276	\$ 784,021	\$ 178,796
Net loss	341,383	782,453	818,186	773,329	637,150
Total comprehensive loss	516,138	851,104	576,665	771,092	659,975
Net loss per common share, basic and diluted	0.01	0.03	0.03	0.03	0.23
Total assets	7,448,606	8,241,375	9,075,721	9,456,128	9,647,500
Total liabilities	379,816	780,719	974,472	923,635	537,580

## Results of operations

The Company's financial statements have been prepared in accordance with International Financial Reporting Standards and are expressed in Canadian dollars.

### Three months ended June 30, 2013 and 2012

#### *Net loss and operating expenses*

Operating expenses for the three months ended June 30, 2013, decreased by approximately \$370,000 from the comparative period in 2012. Due to the Company's limited available cash, corporate expenses and exploration activity were limited by management during 2012 in order to conserve cash, yet still meet the Company's regulatory requirements. Also contributing to the decrease was a lower share-based payment expense, as no new option-based payments were granted during the three months ended June 30, 2013. Net loss decreased in accord with decreased operating expenses.

#### *Mineral property*

The Company's investment in mineral properties increased by approximately \$159,000 during the three months ended June 30, 2013, due to an extension payment on a land purchase option payment (approximately \$400,000) offset by insurance recovery proceeds from a loss of core due to a core shack fire (approximately \$250,000). The increase in the mineral properties asset during the comparative period in 2012 of approximately \$10,000.

### Six months ended June 30, 2013 and 2012

#### *Net loss and operating expenses*

Operating expenses for the six months ended June 30, 2013, decreased by approximately \$510,000 from the comparative period in 2012. Corporate expenses and exploration activity were limited by management during 2013 in order to conserve cash, yet still meet the Company's regulatory requirements. Also contributing to the decrease was a lower share-based payment expense, as no new option-based payments were granted during the six months ended June 30, 2013. Net loss decreased in accord with decreased operating expenses.

#### *Mineral property*

The Company's investment in mineral properties increased by approximately \$190,000 during the six months ended June 30, 2013, due to an extension payment on a land purchase option payment (approximately \$400,000) and a loss of core due to a core shack fire (approximately \$250,000). The increase in the mineral properties asset during the comparative period in 2012 of approximately \$93,000 was related to the capitalization of approximately \$160,000 in exploration expenditures; the increases were decreased by the effects of foreign currency translation.

## Capital resources and liquidity

At June 30, 2013, the Company had cash and cash equivalents of approximately \$3,000, compared to approximately \$4,600 on December 31, 2012. The working capital deficit at June 30, 2013 was approximately \$1,240,000 (December 31, 2012 – approximately \$1,100,000). The decrease in working capital was primarily a result of costs necessary for daily operations and to meet legal, accounting and other necessary regulatory requirements.

The Company manages liquidity risk through maintaining sufficient cash or credit terms with its suppliers to meet the operating requirements of the business and investing excess funds in highly liquid short term cash deposits. Management's ability to manage liquidity over the next 12 months is dependent on the Company's ability to raise funds.

During the six months ended June 30, 2013, the Company was advanced and loaned operating cash from related parties; the funds were used to maintain the Company's essential corporate functions. Management does not plan on material funding from related parties and its ability to raise funds depends on several factors not directly under management's control.

## Contractual obligations and rights

On June 26, 2009, the Company entered into the Turner Option agreement with General Moly Inc. ("GMI") for land, patented mining claims and unpatented mining claims at the Turner Gold Property in Josephine County, Oregon, USA for US\$2,000,000, originally to be paid by December 2011.

The agreement was amended and extended through subsequent agreements; the following table summarizes these payments.

Payment	Date	Payment to GMI, US\$			Balance of purchase price due, US\$
		Extension fee	Credit to purchase price	Total	
Initial balance due					\$ 2,000,000
Initial payment	June 2009	\$ -	\$ 100,000	\$ 100,000	1,900,000
1st extension payment	December 2010	-	300,000	300,000	1,600,000
2nd extension payment	December 2011	50,000	250,000	300,000	1,350,000
3rd extension payment	September 2012	50,000	-	50,000	1,350,000
4th extension payment	October 2012	50,000	-	50,000	1,350,000
5th extension and payment	December 2012	50,000	350,000	400,000	1,000,000
6th extension and payment	May 2013	-	400,000	400,000	600,000
<b>Total</b>		<b>\$ 200,000</b>	<b>\$1,400,000</b>	<b>\$ 1,600,000</b>	<b>\$ 600,000</b>

Following the May 2013 payment, in order for the Company to purchase the property under the Turner Option, the US\$600,000 balance must be paid by December 2, 2013. If the Company does not exercise the option to purchase the Turner Gold Property, all amounts paid by the Company are forfeited.

During the option term, the Company will have possession of and maintain the Turner Gold Property, including paying all claim maintenance fees. GMI retains a production royalty of 1.5% of net smelter return on future production from the Turner Gold Property.



On June 30, 2009, the Company acquired an exclusive option to purchase approximately 333 acres of land in Josephine County, Oregon, for a 12 month period commencing June 18, 2011 (the “Wagner Option”). The Company paid US\$25,000 for this option, which applies against the purchase price of US\$925,000.

On February 6, 2013, the Company amended the Wagner Option and paid a \$15,000 extension payment. The extension payment was recorded at the full extension price of \$30,000, with a \$15,000 liability due to Wagner for Wagner’s option to re-attach mineral rights to the underlying property. The \$15,000 liability is payable to Wagner in all circumstances except where the Company does not complete the Turner Option and GMI does not require the Company to transfer the mineral rights to GMI. The following table summarizes the Company’s current commitments under the amended agreement:

Payment	Scheduled due date	Date paid	Extension fee, US\$	Scheduled credit to purchase price	Total payments remitted through June 30, 2013, US\$	Balance of purchase price due at June 30, 2013
<b>Initial purchase price</b>						<b>\$ 925,000</b>
Initial payment	June 30, 2011	June 2011	\$ -	\$ 25,000	\$ 25,000	900,000
1st extension	January 30, 2013	January 2013	5,000	25,000	30,000	875,000
2nd extension	September 30, 2013		-	50,000	-	875,000
Purchase payment	September 30, 2015		-	825,000	-	875,000
<b>Total</b>			<b>\$ 5,000</b>	<b>\$ 925,000</b>	<b>\$ 55,000</b>	<b>\$ 875,000</b>

## Transactions with related parties

Related parties to the Company include the following:

- St. Augustine Gold and Copper Limited (“SAGC”), an entity with common management and whose corporate employees provide services to the Company;
- Russell Mining Corporation (“RMC”), a private entity with common management and a significant shareholder in the Company;
- Big Rock Holdings, LLC (“Big Rock”), a private entity with common management, and
- Norton Rose Canada LLP (“NortonRose”), the Company’s security counsel and a partner of which is the Company’s corporate secretary.

*Summary of transactions with SAGC, RMC and NortonRose:*

	Amounts payable as at		Expenses incurred during the six months ended June 30,	
	June 30, 2013	December 31, 2012	2013	2012
SAGC	\$ 179,874	\$ 132,911	\$ 41,819	\$ 34,000
RMC	143,331	20,578	61,450	-
Norton Rose	64,607	74,607	5,475	42,000
<b>Totals</b>	<b>\$ 387,812</b>	<b>\$ 228,096</b>	<b>\$ 108,744</b>	<b>\$ 76,000</b>

At June 30, 2013, RMC was owed approximately \$50,000 in principal plus accrued interest of approximately \$1,836 (December 31, 2012 - \$50,000 in principal and approximately \$450 in interest). The debt is convertible into the Company’s shares at US\$0.125 per share.

Big Rock is owed a note payable from the Company with a value at June 30, 2013 of approximately \$560,000. Big Rock assumed debt previously owed to the Company's president and has advanced cash in several tranches under a loan agreement since December, 2012.

The above transactions were conducted in the normal course of operations and measured at the agreed upon exchange amounts, which is the amount of consideration established and agreed to by the related parties and which is similar to those negotiated with third parties.

## **Off-balance sheet arrangements**

As at June 30, 2013, the Company had no off-balance sheet arrangements.

## **Financial instruments and other instruments**

The fair values of the Company's cash and cash equivalents, accounts receivable, accounts payable and notes payable approximate their carrying values because of the short-term nature of these instruments.

The Company's financial instruments are exposed to certain financial risks, including currency risk, credit risk, liquidity risk, and commodity price risk.

### **Currency risk**

The Company's property interests in the United States make it subject to foreign currency fluctuations which may adversely affect the Company's financial position, results of operations and cash flows. The Company is affected by changes in exchange rates between the Canadian Dollar and foreign functional currencies. The Company does not use hedging instruments to mitigate the financial statement or cash flow risks associated with fluctuations in exchange rates.

### **Credit risk**

The Company's cash is held in large Canadian and United States financial institutions. The Company does not have any short-term investments.

### **Liquidity risk**

Liquidity risk is the risk that the Company will not be able to meet its financial obligations as they fall due. The Company manages liquidity risk through the management of its capital structure. Accounts payable and accrued liabilities are due within twelve months of the balance sheet date. At June 30, 2013, current liabilities exceeded current assets, resulting in negative working capital of approximately \$1,240,000 (December 31, 2012 – approximately \$1,100,000).

### **Commodity price risk**

The ability of the Company to explore its mineral properties and the future profitability of the Company are directly related to the market price of gold and other precious metals. The Company has not hedged any of its potential future gold sales. The Company's input costs are also affected by the price of fuel. The Company monitors gold and fuel prices to determine the appropriate course of action to be taken by the Company.

## Outstanding share data

As at the date of this MD&A, the Company's outstanding equity securities are described as follows:

Security	Outstanding
Voting equity securities issued and outstanding	25,551,010 common shares
Securities convertible or exercisable into voting equity securities – stock options	Stock options to acquire up to 1,800,000 common shares
Securities convertible or exercisable into voting equity securities – warrants	Warrants to acquire up to 12,720,000 common shares

## Risks and uncertainties

### No history of earnings

The Company has no history of earnings. Additional external financing will be required to finish a feasibility study and develop the Turner Gold Property. There can be no assurances that any of the Company's properties contain an economic ore body.

### Title risks

Although the Company has exercised due diligence with respect to determining title to the properties in which it has a material interest, there is no guarantee that title to such properties will not be challenged or impugned. The Company's mineral property interest may be subject to prior unregistered agreements or transfers and title may be affected by undetected defects. Until competing interests, if any, in the mineral lands have been determined, the Company can give no assurance as to the validity of title to those lands or the size of such mineral lands.

### Exploration and development

Resource exploration and development is a highly speculative business activity, characterized by a number of significant risks including, among other things, unprofitable efforts resulting not only from the failure to discover mineral deposits but also from finding mineral deposits that, though present, are insufficient in quantity and quality to return a profit from production. The marketability of minerals the Company may acquire or discover may be affected by numerous factors that are beyond its control and that cannot be accurately predicted, such as market fluctuations, the proximity and capacity of milling facilities, mineral markets and processing equipment, and such other factors as government regulations, including regulations relating to royalties, allowable production, the import and export of minerals and environmental protection, the combination of such factors may result in the Company not receiving an adequate return of investment capital.

The Turner Gold Property is in the development stage and is without a known commercially-mineable ore body.

There is no assurance that the Company's mineral exploration and development activities will result in any discoveries of commercial bodies of ore. The long-term profitability of its operations will in part be directly related to the costs and success of its development programs, which may be affected by a number of factors.

Substantial expenditures are required to establish reserves through drilling and to develop the mining and processing facilities and infrastructure at any site chosen for mining. Although substantial benefits may be derived from the discovery of a major mineralized deposit, no assurance can be given that minerals will be discovered in sufficient quantities to justify commercial operations or that funds required for development can be obtained on a timely basis.

The Company is required to obtain required permits from various government departments to carry out its work programs. There is no guarantee all required permits will be granted on terms satisfactory to the Company, or at all. If such permits are not received, the Company may not be able to carry out or complete its business objectives.

### **Uninsured or uninsurable risks**

Exploration, development and production of mineral properties is subject to certain risks, and in particular, unexpected or unusual geological operating conditions including rock bursts, cave-ins, fires, flooding and earthquakes may occur. It is not always possible to insure fully against such risks and the Company may decide not to take out insurance against such risks as a result of high premiums or for other reasons. Should such liabilities arise, they could have a material adverse impact on the Company's operations and could reduce or eliminate any future profitability and result in increasing costs and a decline in the value of the securities of the Company.

### **Operating hazards and risks**

Mineral exploration and development involves risks which even a combination of experience, knowledge and careful examination may not be able to overcome. Operations in which the Company has a direct or indirect interest will be subject to hazards and risks normally incidental to exploration, developments and production of minerals, any of which could result in work stoppages, damage to or destruction of property, loss of life and environmental damage. The nature of these risks is such that liabilities might exceed insurance policy limits, the liabilities and hazards might not be insurable or the Company may elect not to insure itself against such liabilities due to high premium costs or other factors. Such liabilities may have a materially adverse effect upon the Company's financial condition.

### **Environmental risks, regulations, permits and licenses and other regulatory requirements**

The Company's operations may be subject to environmental regulations promulgated by government agencies from time to time. Environmental legislation provides for restrictions and prohibitions on spills, releases or emissions of various substances produced in association with certain mining industry operations, such as seepage from tailings disposal areas that would result in environmental pollution. A breach of such legislation may result in the imposition of fines and penalties. In addition, certain types of operations require the submission and approval of environmental impact assessments. Environmental legislation is evolving in a manner that means standards are stricter, and enforcement, fines and penalties for non-compliance are more stringent. Environmental assessments of proposed projects carry a heightened degree of responsibility for companies and directors, officers and employees. The cost of compliance with changes in governmental regulations has a potential to reduce the profitability of operations.

The Company's operations, including development activities and commencement of production on its properties, require permits from various federal, provincial or territorial and local governmental authorities, and such operations are and will be governed by laws, and regulations governing prospecting, development, mining, production, exports, taxes, labor standards, occupational health, waste disposal, toxic substances, land use, environmental protection, mine safety and other matters.

Such operations and exploration activities are also subject to substantial regulation under applicable laws by governmental agencies that may require that the Company obtains permits from various governmental agencies. There can be no assurance, however, that all permits that the Company may require for its operations and exploration activities will be obtainable on reasonable terms or on a timely basis or that such laws and regulations will not have an adverse effect on any mining project which it might undertake.

Failure to comply with applicable laws, regulations, and permitting requirements may result in enforcement actions thereunder, including orders issued by regulatory or judicial authorities causing operations to cease or be curtailed, and may include corrective measures requiring capital expenditures, installation of additional equipment, or remedial actions. Parties engaged in mining operations may be required to compensate those suffering loss or damage by reason of mining

activities and may have civil or criminal fines or penalties imposed for violations of applicable laws or regulations and, in particular, environmental laws.

Amendments to current laws, regulations and permits governing operations and activities of mining companies, or more stringent implementation thereof, could have a material adverse impact on the Company and cause increases in capital expenditures or production costs or reduction in levels of production at producing properties or require abandonment or delays in development of new mining properties.

### **Competition**

The mining industry is intensely and increasingly competitive in all its phases, and the Company will compete with other companies that have greater financial and technical resources. Competition in the precious metals mining industry is primarily for mineral rich properties which can be developed and produced economically and businesses compete for the technical expertise to find, develop, and produce such properties, the skilled labor to operate the properties and the capital for the purpose of financing development of such properties. Such competition could adversely affect the Company's ability to acquire suitable producing properties or prospects for mineral exploration, recruit or retain qualified employees or acquire the capital necessary to fund its operations and develop its properties.

### **Dependence on management and directors**

The Company is largely dependent on the performance of its directors and officers. There is no assurance the Company will be able to maintain the services of its directors and officers or other qualified personnel required to operate its business. The loss of the services of these persons could have a material adverse effect on the Company and its prospects.

### **Fluctuating mineral prices**

The mining industry is heavily dependent upon the market price of metals or minerals being mined. There is no assurance that, even if commercial quantities of mineral resources are discovered, a profitable market will exist at the time of sale. Factors beyond the Company's control may affect the marketability of metals or minerals discovered, if any. Metal prices have fluctuated widely, particularly in recent years, and the Company will be affected by numerous factors beyond the control of the Company. The effect of these factors on the Company's operations cannot be predicted. If mineral prices decline significantly, it could affect the Company's decision to proceed with further exploration of its properties.

### **Future financing**

The Company's continued operation will be dependent upon its ability to generate operating revenues and to procure additional financing. There can be no assurance that any such revenues can be generated or that other financing can be obtained on acceptable terms to the Company, if at all. Failure to obtain additional financing on a timely basis may result in delay or indefinite postponement of further exploration and development or forfeiture of some rights in some or all of the Company's properties. If additional financing is raised by the issuance of shares from treasury, control of the Company may change and shareholders may suffer additional dilution. If adequate funds are not available, or are not available on acceptable terms, the Company may not be able to further explore and develop its properties, take advantage of other opportunities, or otherwise remain in business. Events in the equity market may impact the Company's ability to raise additional capital in the future.

### **Future acquisitions**

As part of the Company's business strategy, it may seek to grow by acquiring companies, assets or establishing joint ventures that it believes will complement its current or future business. The Company may not effectively select acquisition candidates or negotiate or finance acquisitions or integrate the acquired businesses and their personnel or acquire assets for its business. The Company cannot guarantee that it can complete any acquisition it pursues on favorable terms, or that any acquisitions completed will ultimately benefit its business.

### **Volatility of share price**

In recent years, the securities markets in the United States and Canada have experienced a high level of price and volume volatility, and the market prices of securities of many companies have experienced wide fluctuations in price that have not necessarily been related to the operating performance, underlying asset values or prospects of such companies. There can be no assurance that continual fluctuations in price will not occur. It may be anticipated that any quoted market for the shares will be subject to market trends and conditions generally, notwithstanding any potential success of the Company in creating revenues, cash flows or earnings.

### **Conflicts of interest**

Certain directors and officers of the Company will and may continue to be involved in the mining and mineral exploration industry through their direct and indirect participation in corporations, partnerships or joint ventures which are potential competitors of the Company. Situations may arise in connection with potential acquisitions or opportunities where the other interests of these directors and officers may conflict with the interest of the Company. Directors and officers of the Company with conflicts of interest will be subject to and follow procedures set out in applicable corporate and securities legislation, regulation, rules and policies.

### **Dividends**

The Company has never paid a dividend on its common shares. It is not anticipated that the Company will pay any dividends on its common shares in the foreseeable future.

### **Adverse fluctuations in currency exchange rates**

The Company will be subject to fluctuations in the rates of currency exchange between the Canadian dollar and the United States dollar and these fluctuations could materially affect the Company's financial position and results of operations as costs may be higher than anticipated. The costs of goods and services could increase due to changes in the value of the Canadian dollar or the United States dollar. Consequently, operation and development of the Company's properties might be more costly than the Company anticipates.

### **Current global economic conditions**

Recent market events and conditions, including disruptions in the international credit markets and other financial systems and the deterioration of global economic conditions, could impede the Company's access to capital or increase its cost of capital. The Company's failure to raise capital when needed or on reasonable terms may have material adverse effects on the Company's business, financial condition and results of operations. A trend in the global mining industry relates to government nationalization of natural resources; the Company's sole project is located in the United States.

### **Valuation of investment in mineral properties**

Management has noted that the Company's market capitalization as at and during the six months ended June 30, 2013 was below the value of its investment in mineral properties. Current economic conditions have made fundraising difficult, and the market prices for gold and copper have recently experienced rapid declines. These factors, should they persist, may represent indicators of impairment for which management may be required to test its investment in mineral properties for impairment within the next 12 months.



## **Critical accounting policies and estimates**

### **Statement of compliance**

The Company's condensed consolidated interim financial statements, including comparatives, for the six months ended June 30, 2013, have been prepared in accordance with International Financial Reporting Standard 34 – Interim Financial Reporting - as issued by the International Accounting Standards Board effective for the Company's reporting year ending December 31, 2013.

### **Statement of compliance analysis**

Management has implemented internal controls over financial reporting and disclosure controls and procedures which management believes operate effectively. In addition to performing a rigorous period-end review of the close and financial reporting process, management analyzes its financial statements and related disclosures in relation to IFRS guidance effective for the reporting method. As of June 30, 2013, management determined that the financial statements, notes to the financial statements, and this MD&A are in compliance with IFRS and do not contain material misstatements of financial information or fact.

### **Exploration and evaluation**

The Company is in the exploration stage with respect to its investment in mineral properties and accordingly follows the practice of capitalizing all costs relating to the acquisition of, exploration for and development of mineral claims and crediting all revenues received against the cost of the related claims. Such costs include, but are not exclusive to, geological, geophysical studies, exploratory drilling and assaying. At such time as commercial production commences, these costs will be charged to operations on a unit-of-production method based on proven and probable reserves. The aggregate costs related to abandoned mineral claims are charged to operations at the time of any abandonment or when it has been determined that there is evidence of a permanent impairment.

The recoverability of amounts shown for exploration and evaluation assets is dependent upon the discovery of economically recoverable reserves, the ability of the Company to obtain financing to complete development of the properties, and on future production or proceeds of disposition.

All capitalized exploration and evaluation expenditures are monitored for indications of impairment. Where a potential impairment is indicated, assessments are performed for each area of interest. To the extent that an exploration expenditure is not expected to be recovered, it is charged to the results of operations. Exploration areas where reserves have been discovered, but require major capital expenditures before production can begin, are continually evaluated to ensure that commercial quantities of reserves exist or to ensure that additional exploration work is underway as planned.

### **Exploration and evaluation analysis**

Management has performed a rigorous review of its contractual commitments and rights and IFRS 6- Exploration for and evaluation of mineral resources. The Company's expenditures included in the Company's mineral properties include those which have directly benefited the Turner Gold Project and which management has determined, based on an impairment analysis, to be recoverable.

The impact of the Company's treatment of capitalized expenses in respect of the Company's financial statements has been to increase the Company's assets and decrease net loss, as compared to a policy which expenses a higher proportion of Project expenditures.

## Outlook

The Company remains committed to advancing the Turner Gold Project and is still engaged in project planning and engineering studies to determine the best available methods to maximize project potential and shareholder value. The results from the recent 2011 infill drilling program has been used to update the Turner Gold Resource as of October, 2012 adding over an additional one million tons (42% increase) in indicated resource. The Company's original goals of starting and completing a preliminary feasibility study ("PFS") in the fourth quarter of 2012 were not met; additional information regarding the timing of the PFS will be announced by the Company as the resource update is completed.

Further, management has undertaken the evaluation of new mining projects, although no definitive agreements have been executed at the date of this document.