



12 Mitchell Road
Flin Flon, MB, R8A 1N1

CZC.CSE
copperreefmining.com

Tel: (204) 687-3500
Fax: (204) 687-4762

February 4, 2015

Copper Reef Completes Airborne Magnetic Survey at Pikoo

FLIN FLON, MANITOBA – February 4, 2015.....Copper Reef Mining Corporation (CSE: CZC) (the Company) is pleased to announce that an airborne magnetic survey has been completed over its B1 Property, located in the Pikoo diamond exploration play near Pelican Narrows, Saskatchewan. As noted in the company's December 23rd, 2014 press release, several significant till samples containing Kimberlite Indicator Minerals (KIMs) analysed at C F Minerals, are aligned along a prospective north-northeastward trend on the company's B1 property that may be associated with magnetic anomalies, originally outlined by Stornoway Diamond Corporation in a 2007 aeromagnetic survey.

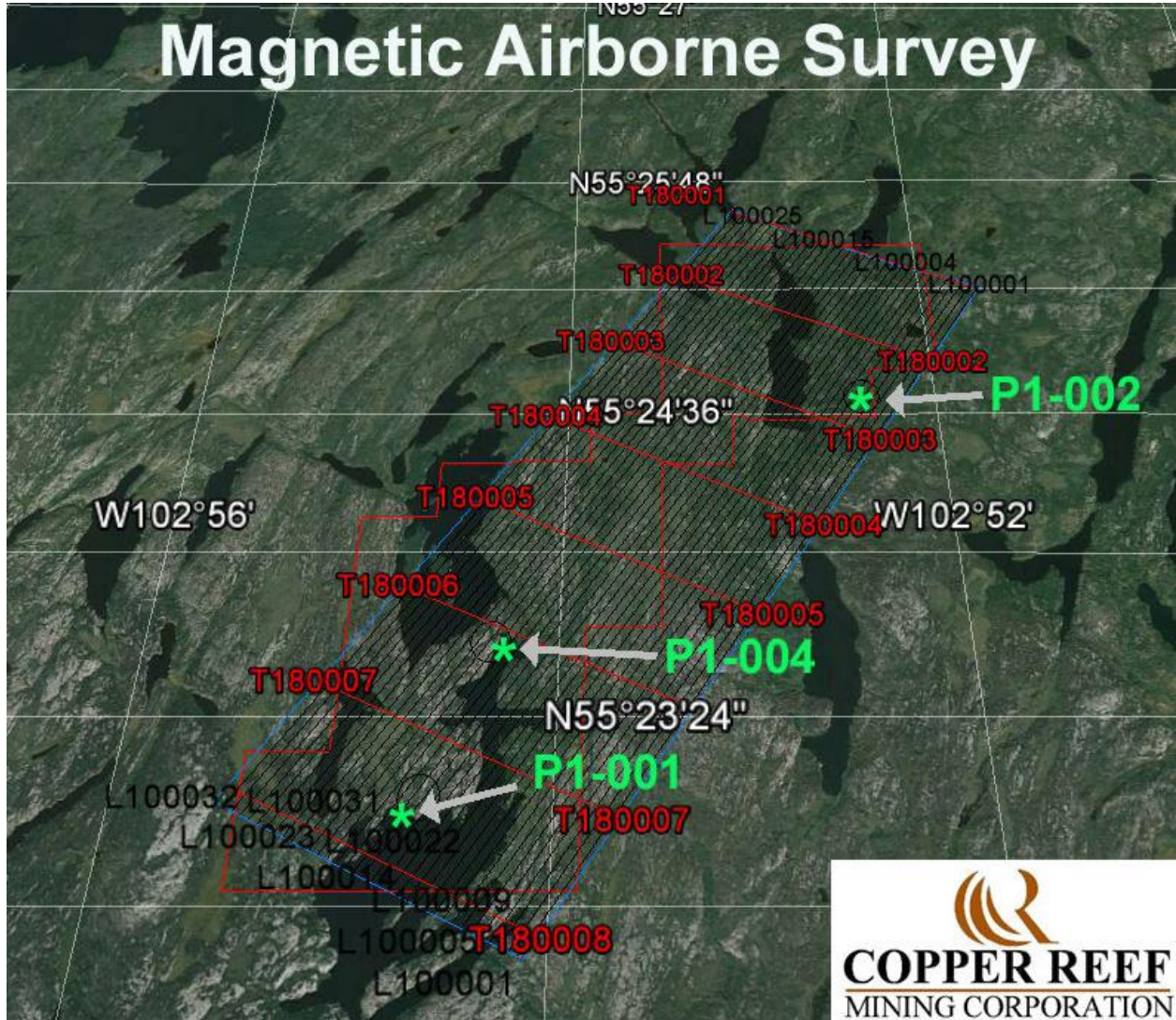
This newly completed aeromagnetic survey over the entire B1 Property is expected to provide a much clearer, higher resolution image of the two main southern magnetic targets (Pikoo 1-001 and 004) on that property. Owing to lake cover and proximity to shorelines, previous ground magnetic surveys were unable to accurately locate and define the two southern aeromagnetic targets.

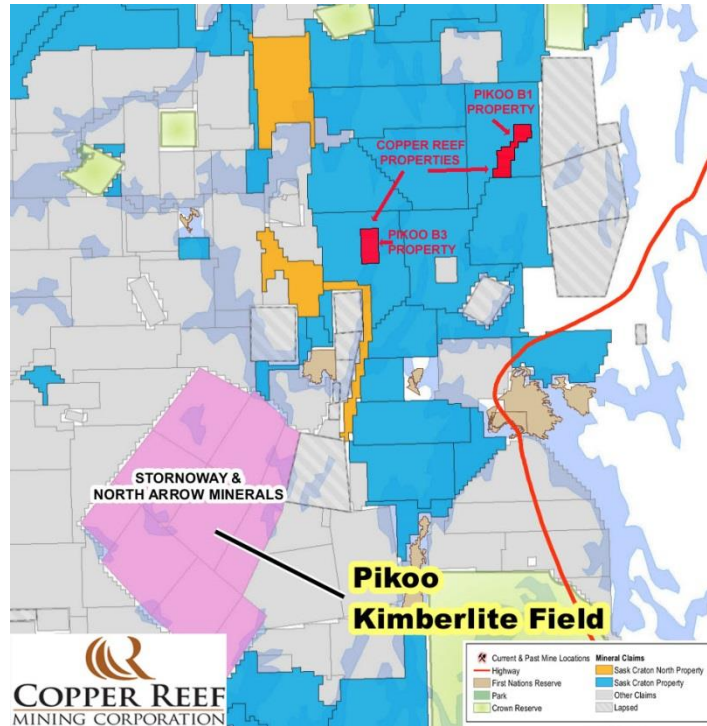
It is also important to note that some of the best KIM in till results noted within the B1 Pikoo property were picked up immediately down-ice of the Pikoo 1-002 magnetic anomaly, that may easily represent one of the largest, northernmost and most significant magnetic anomalies on the B1 Pikoo property.

The new 220 line-km airborne magnetic survey covering the Copper Reef properties (see below) was flown at a 50 metre line spacing, parallel to an azimuth of 207 degrees, and along 34 lines. Eight tie lines flown parallel at an azimuth of 117 degrees are also included in the 220 line-km total.

Management feels that this new survey will provide a much better definition to the cluster of magnetic anomalies on the property and may further explain the second largest circular airborne magnetic anomaly on the B1 Pikoo property (i.e., the Pikoo 1-001 target) that likely

occurs beneath lake waters and immediately south along the same lineament as the Pikoo 1-004 target. Copper Reef intends to follow the targets with prospecting and further till sampling in order to establish drill targets with confidence.





ABOUT COPPER REEF MINING CORPORATION

Copper Reef is a Canadian junior mineral exploration company with a specific focus on mineral properties in northwest Manitoba and northeast Saskatchewan, Canada. All of the Issuer's properties are currently at the exploration stage. The Issuer has no long-term debt and has assembled a portfolio of base metal and precious metal prospects, including strategic locations in the Provinces of Manitoba and Saskatchewan.

Copper Reef Mining Corporation
 "signed"
 Stephen L. Masson M.Sc. P.Geo.

President & CEO

No stock exchange or securities regulatory authority has reviewed or accepted responsibility for the adequacy or accuracy of this release. Some of the statements contained in this release are forward-looking statements, such as estimates and statements that describe the Issuer's future plans, objectives or goals, including words to the effect that the Issuer or management expects a stated condition or result to occur. Since forward-looking statements address future events and conditions, by their very nature, they involve inherent risks and uncertainties.