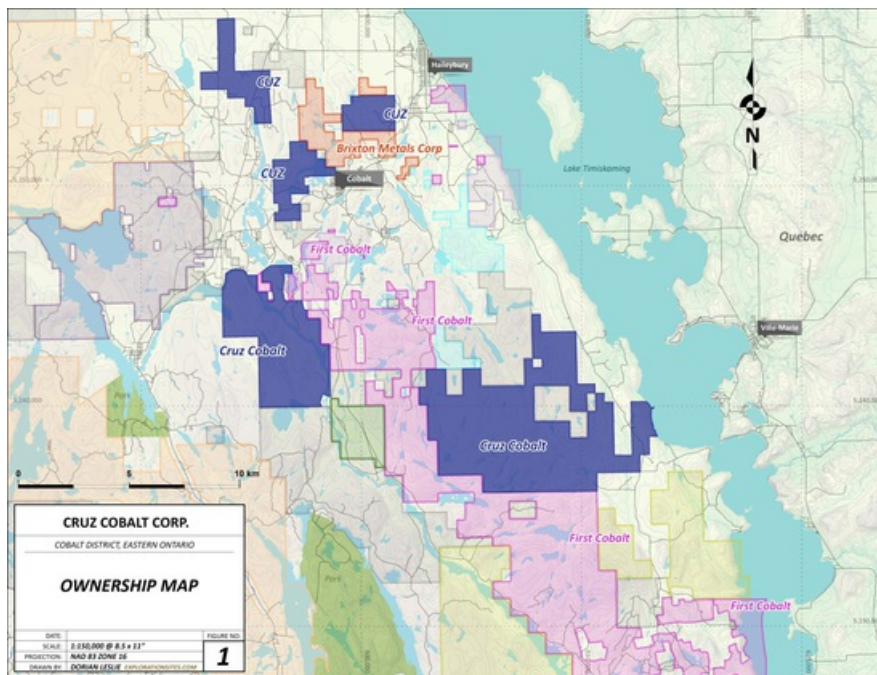


Cruz Cobalt Corp. Increases Land Holdings in the Cobalt Region of Ontario

Vancouver, British Columbia--(Newsfile Corp. - February 14, 2018) - **Cruz Cobalt Corp. (TSXV: CUZ) (OTC Pink: BKTPF) (FSE: A2DMG8)** is pleased to announce that the company has increased its acreage in the Cobalt District of Ontario. The new acreage is contiguous to the "Lorraine Cobalt Prospect" and now consists of 10,556 contiguous acres bordering First Cobalt Corp. in the direct vicinity of the town of Cobalt, Ontario.

Cruz President, James Nelson, stated, "We are pleased to further expand our acreage in the historic cobalt camp in Ontario. Cruz is one of the single largest landholders behind First Cobalt Corp with 5 separate cobalt prospects in the region. We feel that consolidation of the cobalt camps globally is inevitable and we are positioning Cruz to be a significant participant in the emerging Ontario Cobalt District. We plan to be very active in Ontario in 2018. The price per pound of cobalt has again made a new 10-year high this week, and cobalt has never been more in focus as the world is moving towards full scale electric car adoption. The demand for battery metals appears to be at the start of long term super cycle and Cruz is positioning itself early for this cycle."



Ontario Cobalt Map

To view an enhanced version of this image, please visit:

http://orders.newsfilecorp.com/files/4754/32798_a1518559355120_75.jpg

Recently (January 22, 2018) Cruz increased its acreage on the "Purcell Cobalt Prospect" from 671 acres to 11,821 acres, consolidating the previous two separate Purcell prospects into one much larger contiguous prospect. Also on January 16, 2018 Cruz increased its landholdings surrounding the War Eagle cobalt prospect in BC. Cruz now has a 100% interest in 15,219 acres on the War Eagle cobalt prospect. Cruz also just recently completed an airborne survey over the War Eagle and Purcell cobalt prospects in BC and uncovered strong magnetic anomalies (announced January 19, 2018). Management is now working diligently on advancing these two BC cobalt prospects.

Cruz currently has nine cobalt projects located throughout North America, comprising of five in Ontario, two in British Columbia, one in Idaho and one in Montana. Cruz's five separate Ontario cobalt prospects are all located in the vicinity of the town of Cobalt making Cruz one of the largest landholders in this emerging cobalt district. Cruz's Ontario projects include the 1,265 acre Coleman cobalt prospect, the 900 acre Johnson cobalt prospect, the 4,980 acre Hector cobalt prospect, the 1,580 acre Bucke cobalt prospect and now the 10,556 Lorraine cobalt prospect. The company's BC prospects include the 15,219 acre War Eagle cobalt prospect and the 11,821 acre Purcell prospect. Cruz's USA projects include the 1,940 acre Chicken Hawk prospect in Montana and the 880 acre Idaho Star prospect. This new acreage was acquired via staking.

The technical contents of this release were approved by Greg Thomson, PGeo, a qualified person as defined by National Instrument 43-101.

If you would like to be added to Cruz's email list please send an email to info@cruzcobaltcorp.com or twitter [@CruzCobalt](https://twitter.com/CruzCobalt)

James Nelson
President
604.899.9150
Toll free 1.855.599.9150

www.cruzcobaltcorp.com
twitter [@CruzCobalt](https://twitter.com/CruzCobalt)