

TRUECLAIM EXPLORATION INC.

Suite 404 – 999 Canada Place

Vancouver, BC V6C 3E2

July 26, 2017

TSX.V Symbol: TRM

TRUECLAIM EXPLORATION INC. ANNOUNCES CORPORATE UPDATE ON ITS SCADDING GOLD PROJECT JOINT VENTURE WITH NORTHERN SPHERE MINING CORP.

Trueclaim Exploration Inc. is pleased to provide the following corporate update on its Scadding Gold Project in Sudbury, Ontario.

Northern Sphere Mining Corp. who has an 80-20 joint venture with Trueclaim Exploration Inc. is pleased to announce it has received the necessary permits to commence diamond drilling on its Scadding Gold Project located near Sudbury, Ontario. Following the successful completion of its First Nations Consultation and Public Review, the Company has received its Exploration Permit from the Ministry of Northern Development and Mines. The Company has contracted Wolf Mountain Drilling to diamond drill its previously announced Scadding Gold Project.

The Scadding Gold Project, located within the Sudbury Mining District, is accessible by a serviced, all-season road (see Figure 1). The site is part of Northern Sphere's 40,000-acre option ground in which Northern Sphere has earned an 80% interest with a right to earn up to a 90% interest, and an option to purchase the remaining 10% interest.

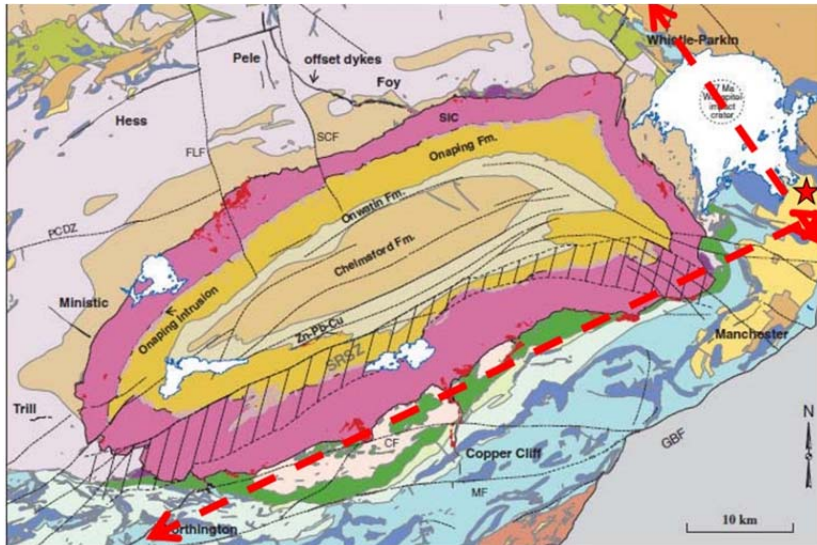


Figure 1: Geological map of the Sudbury Mining District (after Ames et al., 2008)
Structural trends highlighted in red dashed arrows. The red star indicates the location of Scadding Gold Project (located at the junction).

Drill targeting at the Scadding Gold Project will follow the latest successful drilling in 2011 by Trueclaim Exploration Inc. ("Trueclaim") (see Table 1). Drilling will encompass areas close to past mining activities where approximately 140,000 tons of mineralized rock (116,000 tons from underground and 24,000 from open pits) were processed from the site during the 1980's (see Figure 2). Reports (NI 43-101 Report Scadding Gold Property, Scadding Township District of Sudbury Ontario - L.D.S. Winter, P.Geo. 22 June 2009) indicate that the 140,000 tons of mineralized rock yielded approximately 29,400 ounces of gold at a head grade of 7.2 g/t.

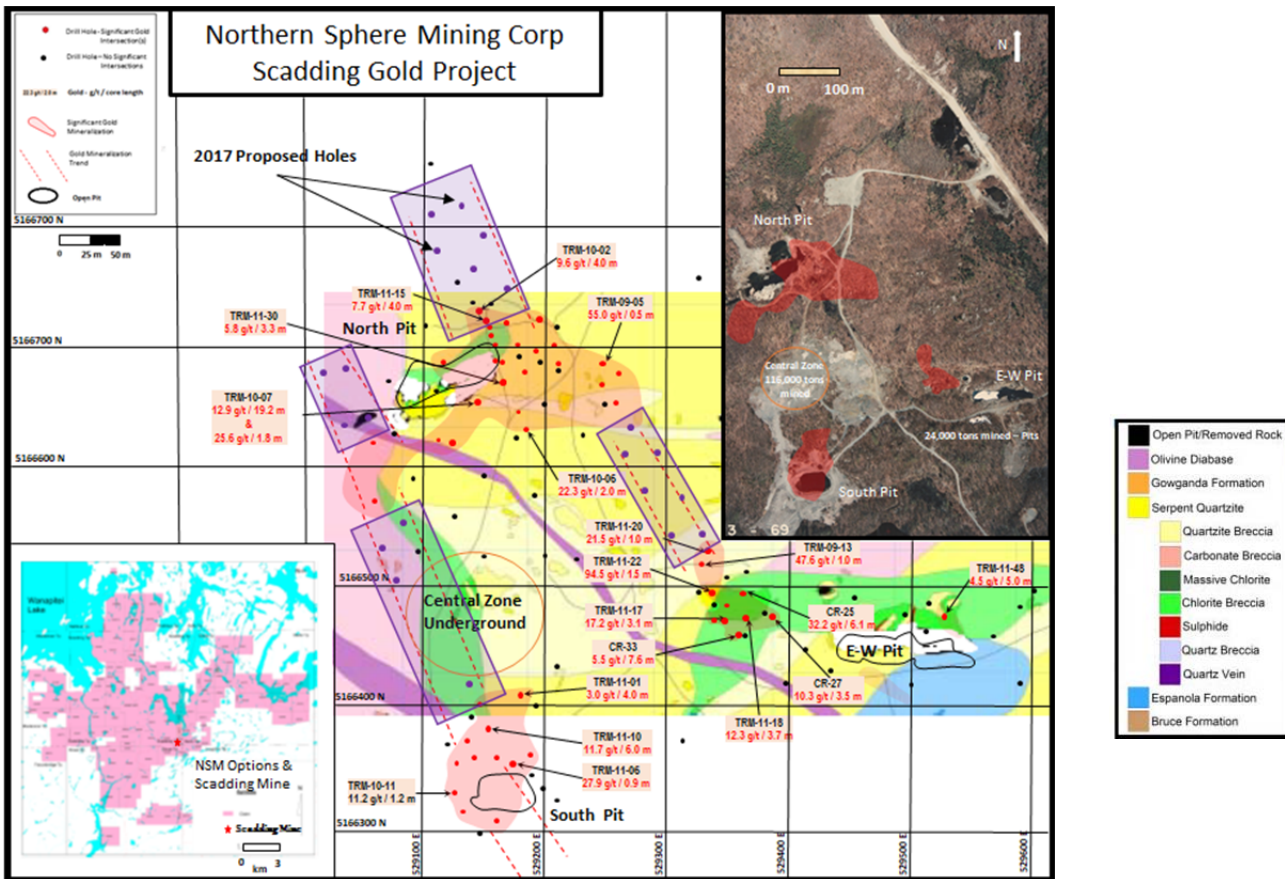


Figure 2: Northern Sphere’s Scadding Gold Project

*TRM Holes were drilled by Trueclaim utilizing CIM Exploration Best Practice Guidelines

* CR holes depicted were drilled before the introduction of NI 43-101. CR Drill Project was supervised by Professional Geologist , Paul MacLean in 1997/98

With the bulk of the previous drilling focused near surface, Northern Sphere has an excellent opportunity to test open ground below former excavations, down dip, along strike, and at depth from recent diamond drilling.

Table 1: Significant Drill Intercepts 2009-2011 Diamond Drilling

Hole ID	From (m)	To (m)	Core length	
			(m)	Grade (g/t)
TRM-09-04	85.6	86.7	1.1	7.0
TRM-09-05	89.4	89.9	0.5	55.0
TRM-09-13	66	67	1.0	47.6
TRM-10-02	30	34	4.0	9.6
TRM-10-06	70	72	2.0	22.3
TRM-10-07	52.4	71.6	19.2	12.9
TRM-10-10	110.2	112	1.8	25.6
TRM-11-10	41	43.7	2.6	4.5
TRM-11-12	53	68.8	15.8	5.4
TRM-11-15	32	38	6.0	2.8
TRM-11-18	30	40	10.0	3.5
TRM-11-22	52	55.7	3.7	12.3
TRM-11-30	31.5	33	1.5	94.5
TRM-11-31	84	87.3	3.3	5.8
TRM-11-48	76	79	3.0	3.7
	98	103	5.0	4.5

Technical information pertaining to the diamond drilling of the TRM designated holes was under the supervision of Ms. Lindsay Moss, P. Geo., an employee of Trueclaim, and was conducted in accordance with Canadian regulatory requirements as set out in National Instrument 43-101. Trueclaim's quality control and assurance program included the insertion of standards and blanks, the retention of 1/2 of the cut core that has been sampled, pulps and rejects, and the use of an independent certified lab, Accurassay Laboratories of Thunder Bay, ON. Samples are sent for fire assay and if warranted for ICP. Assays of significance are re-assayed using screen metallics to ensure accurate values.

*Holes were drilled and analyzed using CIM Exploration Best Practice Guidelines

In addition to the Scadding Gold Project drilling, Northern Sphere is reviewing additional drill targets on a more regional scale. Some notable target areas include:

- offset geophysical trends that play host to sulfide rich, gold bearing, zones of chlorite
- geophysical anomalies along the MacPherson Fault on a similar strike as the Scadding Gold Project
- Serpent Formation contact targeting quartzite breccia.

The Company's goal is to delineate a high-grade gold resource at the Scadding Gold Project while continuing to access other prospective areas on its 40,000 acre Sudbury Claim.

The Company is also pleased to announce that it has entered into a letter of intent with the Atikameksheng Anishnawbek First Nation to work collaboratively to prepare the terms and conditions of a memorandum of understanding with the intent to enter into an agreement relating to the prospects, projects and business transactions for the Scadding Gold Project.

Qualified Persons

Steve Gray, P.Geo., Vice President of Northern Sphere has reviewed, prepared and approved the scientific and technical information in this press release and is Northern Sphere's "Qualified Person" as defined by National Instrument 43-101 - Standards of Disclosure for Mineral Projects.

TRM is very pleased and encouraged by the progress NSM is making on advancing the Scadding Gold Project.

TRUECLAIM EXPLORATION INC.

Per: "Byron Coulthard"
Byron Coulthard
President & CEO
604.657.7004

This press release contains forward-looking statements which reflect Northern Sphere's current expectations regarding future events. The forward-looking statements involve risks and uncertainties. Actual results could differ materially from those projected herein. Northern Sphere disclaims any obligation to update these forward-looking statements other than as required by applicable securities laws.

The Canadian Securities Exchange has not reviewed and does not accept responsibility for the adequacy or accuracy of this release.