



**Geologic Assessment
of the
Glacier Prospect Area
Toole and Glacier Counties, Montana**

Big Sky Petroleum Corporation

(As of December 31, 2012)

Prepared for
Big Sky Petroleum Corporation
December 2012

**GEOLOGIC ASSESSMENT OF THE
GLACIER PROSPECT AREA
BIG SKY PETROLEUM CORPORATION
TOOLE and GLACIER COUNTIES, MONTANA
(As of December 31, 2012)**

INTRODUCTION

This report was prepared at the request of Mr. Milton Cox of Big Sky Petroleum Corporation (hereinafter referred to as the “Company”). It consists of an update to the geologic assessment of three separate packages of acreage in Toole and Glacier Counties, Montana originally submitted with an effective date of August 1, 2011. For the purposes of this report, these three packages are referred to as the: 1) FX Block located in Townships 31N-33N Ranges 5W-6W, Glacier County, 2) Glacier Prospect (Somont Farm-Out) located in Townships 34N-35N Ranges 1W-2W, and 3) Americana Block located in Townships 33N-35N Ranges 1E-2E (Figure 1). Table 1 contains a detailed description of the lands. Both the Glacier Prospect and the Americana acreage packages are located in Toole County, Montana. This report was prepared for the purpose of evaluating the Company’s geologic potential and is consistent with National Instrument 51-101. It was prepared for the Company’s corporate purposes. The effective date of this evaluation is December 31, 2012.

MHA was contracted to confirm the geologic viability of a Lower Mississippian-Upper Devonian play concept associated with these three packages of acreage. Exploration on each of these packages has targeted the productive potential of porous zones in the Lower Mississippian Banff and Exshaw Formations as well as the Upper Devonian Three Forks Formation (Figure 2). Using Williston Basin terminology, exploration on these packages has targeted the Lower Mississippian Lodgepole and Bakken (Middle Bakken) as well as the Upper Devonian Three Forks Formations.

Well data was gathered from all “Bakken” penetrations in Townships 33N-36N Ranges 2E-2W. Most of these wells were drilled recently enough to have modern logs available, while only nine



wells were drilled in the 1920's and were not logged. Recently published data was relied on to support the geochemical portion of this evaluation.

This report is included in one volume, which consists of an Introduction, Summary, and Discussion. The Introduction includes the summary of evaluation standards and procedures and pertinent author certificates, the Summary includes summaries of the evaluation, and the Discussion includes a description of the methodology used to evaluate the geologic potential.

Field Operations

In the preparation of this evaluation, a field inspection of the properties was not performed. The relevant geologic data were made available by the Company or obtained from public sources and the non-confidential files at MHA.

Evaluation Standards

This report has been prepared by MHA using state-of-the-art geological and engineering knowledge and techniques. This report adheres in all material aspects to the "best practices" recommended in the COGE Handbook which are in accordance with principles and definitions established by the Calgary Chapter of the Society of Petroleum Evaluation Engineers. The COGE Handbook is incorporated by reference in National Instrument 51-101.

Forward-Looking Statements

This report may contain forward-looking statements including expectations of future production and capital expenditures. Information concerning reserves may also be deemed to be forward-looking as estimates involve the implied assessment that the reserves described can be profitably produced in the future. These statements are based on current expectations that involve a number of risks and uncertainties which could cause actual results to differ from those anticipated. These risks include, but are not limited to: the underlying risks of the oil and gas industry (i.e., operational risks in development, exploration and production; potential delays or changes in plans with respect to exploration or development projects or capital expenditures; the uncertainty of reserves estimations; the uncertainty of estimates and projections relating to



production; costs and expenses, and health, safety and environmental factors), commodity price and exchange rate fluctuation.

Exclusivity

This report has been prepared for the exclusive use of the Company, and shall not be reproduced, distributed, or made available to any other company or person, regulatory body, or organization without the knowledge and consent of MHA Petroleum Consultants LLC and without the complete contents of the report.



Certification

Report Preparation

The report entitled "Geologic Assessment of the Glacier Prospect Area, Toole and Glacier Counties Montana, Big Sky Petroleum Corporation, (As of December 31, 2012)" was prepared by the following MHA personnel:

Dennis P. Holler, M. Sc.
Sr. Geologic Associate

Leslie S. O'Connor, B.Sc., L.P.G.
Managing Partner



MHA Executive Endorsement

This report has been reviewed and endorsed by the following Executive of MHA:



Leslie S. O'Connor, B.Sc., L.P.G.
Managing Partner



Certificate

Dennis P. Holler, M. Sc.

I, Dennis P. Holler, Senior Geologic Associate of MHA Petroleum Consultants LLC, 730 17th Street, Ste 410, Denver, Colorado 80202, declare the following:

1. I hold the following degrees:
 - a. B. Sc. Geology, 1970, University of Texas at Arlington
 - b. M. Sc. Geology, 1975, University of Alabama

2. I am a member of the following professional organizations:
 - a. American Association of Petroleum Geologists
 - b. Society for Sedimentary Geology
 - c. Rocky Mountain Association of Geologists

3. I am a qualified evaluator and auditor as defined in National Instrument 51-101.

4. My contribution to the report entitled "Geologic Assessment of the Glacier Prospect Area, Toole and Glacier Counties Montana, Big Sky Petroleum Corporation, (As of December 31, 2012)" is based on my geological and engineering knowledge and the data provided to me by the Company, from public sources, and from the non-confidential files of MHA Petroleum Consultants LLC. I did not undertake a field inspection of the properties.

5. I have no interest, direct or indirect, nor do I expect to receive any interest, direct or indirect, in the properties described in the above-named report or in the securities of Big Sky Petroleum Corporation.



Dennis P. Holler, M. Sc.
Sr. Geologic Associate



Certificate

Leslie S. O'Connor, B. Sc., L.P.G

I, Leslie S. O'Connor, Managing Partner of MHA Petroleum Consultants LLC, 730 17th Street, Ste 410, Denver, Colorado 80202, declare the following:

1. I hold the following degree:
 - a. B. Sc. Geology with Applied Engineering, 1978, Northern Arizona University
2. I am a registered professional:
 - a. Licensed Professional Geoscientist, Texas, #181
 - b. Licensed Professional Geologist, Wyoming, #PG-3059
 - c. Licensed Professional Geologist, Utah #5207412-2250
 - d. AAPG, DPA, Certified Petroleum Geologist #5270
3. I am a member of the following professional organizations:
 - a. Society of Petroleum Engineers
 - b. Society of Petroleum Evaluation Engineers
 - c. American Association of Petroleum Geologists
 - d. Society of Professional Well Log Analysts
4. I am a qualified evaluator and auditor as defined in National Instrument 51-101.
5. My contribution to the report entitled "Geologic Assessment of the Glacier Prospect Area, Toole and Glacier Counties Montana, Big Sky Petroleum Corporation, (As of December 31, 2012)" is based on my geological and engineering knowledge and the data provided to me by the Company, from public sources, and from the non-confidential files of MHA Petroleum Consultants LLC. I did not undertake a field inspection of the properties.
6. I have no interest, direct or indirect, nor do I expect to receive any interest, direct or indirect, in the properties described in the above-named report or in the securities of Big Sky Petroleum Corporation.



Leslie S. O'Connor, B. Sc., L.P.G.
Managing Partner



SUMMARY

This report is based on interpreted technical data, including geological and geophysical reports, maps and cross-sections, and other materials supplied by the Company. Discussions held with the Company, augmented by published information and our personal knowledge of the area involved, assisted in the evaluation of this property.



DISCUSSION

FX Block

Big Sky Petroleum Corporations' FX acreage block consists of 10,597 gross acres (2,659 acres net to Big Sky) located in Townships 31N-33N Ranges 5W-6W, Glacier County, Montana. All of this acreage is held by production (HBP) by FX. Exploration on the FX block targeted the Lower Mississippian Banff and Exshaw Formations as well as the Upper Devonian Three Forks Formation. Portions of the Banff and Exshaw Formations make up the "Bakken" equivalent section in this area. The lower Banff is an organic rich shale that is time equivalent to the upper Bakken shale. The Lower Exshaw is an organic rich shale that is time equivalent to the lower Bakken shale. The Upper Exshaw and "Middle Bakken" are time equivalent. Of these, the Upper Exshaw appears to be the primary objective in the FX block although it appears to be significantly thinner than what is expected to be encountered on the other two acreage blocks included in this report.

Big Sky Petroleum Corporation has already participated in a well (FX 81-3, NWNE 26 T32N R6W) on the FX block. Although open-hole electric logs were not particularly encouraging there was a good show of live oil recovered from the perforating gun as the well was being readied for stimulation. But since the Three Forks, Upper Exshaw and Banff Formations were all perforated at the same time, it cannot be determined which formation or formations contributed that oil. Based on log resistivity only, it would appear that the oil came from the Upper Exshaw interval. Unfortunately, well performance after completion was not as encouraging as earlier sample shows might have indicated. The FX 81-3 was shut-in in 2011 and remains shut-in as of the date of this update. Big Sky has no current plans for additional evaluation of this acreage block.

It is MHA's opinion that the FX block contains only limited development potential in the target zones mentioned above, the economics of which have yet to be determined. The potential of other zones for which Big Sky Petroleum Corporation might have rights has not been addressed in this report.



Somont Farm-in Package (Glacier Prospect)

Big Sky Petroleum Corporation has completed the drilling of two obligation wells required under the terms of the Somont Farmout Agreement. Unfortunately, testing results were not encouraging enough to warrant keeping the farmout intact and Big Sky Petroleum Corporation terminated the Agreement, without monetary penalty, in 2012. With the termination of the farmout, Big Sky Petroleum Corporation reassigned both of these wells (the FX Big Sky Petroleum Corporation 14-29, located in the SESW 29 T35N R 1W and the FX Big Sky Operating 15-13, located in the SWSE 13 T34N R2W) to Somont.

By terminating the agreement with Somont, Big Sky Petroleum Corporation has forfeited its rights to earn within the Somont Block. As a result, all references to an acreage position or Big Sky Petroleum Corporations existing access to the hydrocarbon potential within the Somont Block ended on the effective date of the termination and have been deleted from this update report.

Americana Acreage Block

The Americana acreage package consists of approximately 20,142 gross acres or 6,732 acres net to Big Sky Petroleum Corporation. This represents a reduction in both gross and net acreage noted in the December 31, 2011 report because Big Sky sold approximately 27,283 gross/9,093 net acres in 2012. Gross proceeds from this sale amounted to \$682,982, with \$227,658 net to Big Sky.

Of the 20,142 gross acres in the current inventory approximately 5,260 acres will expire in 2013 unless the leases are extended. MHA has been assured by Big Sky Petroleum Corporation that they will attempt to extend all leases due to expire in 2013.

Unlike the Glacier Prospect (Somont Farm-in), Big Sky Petroleum Corporation has purchased this acreage block. No earning wells are required to earn an interest in the lease position and it is assumed that lease assignments covered rights to all depths. MHA evaluated this acreage package with the same series of maps and cross sections included in earlier submittals of this report. The focus of our evaluation was consistent with the other two prospect evaluations and covered only the lower Mississippian and upper Devonian potential. MHA finds this



“Americana” play concept to be interesting, geologically, but containing significant risks that directly impact the probability of economic success. Each of these risks is discussed below.

Structure

The prospect acreage that Big Sky Petroleum Corporation will be testing is located on the eastern flank of the Kevin Sunburst Dome. Whether structure is critical for trap definition has yet to be determined, but the acreage that will be tested lies between 400’ and 800’ down dip of the crest of the Dome. Any hydrocarbons generated from the “Bakken” shale could have easily migrated into potential Banff, Upper Exshaw (Middle Bakken) and/or Three Forks reservoirs. However, the Lower Exshaw (“Bakken”) - Three Forks Isopach and current structure on the Lower Exshaw shale indicate that the preferred direction of migration would have been to the west, toward the crest of the Dome and away from this acreage package. Without a successful test of either the Upper Exshaw or Three Forks reservoirs, the structural positioning of this acreage package on the Dome adds a significant element of risk to any potential test.

Potential Reservoirs

The primary objectives of this prospect are the Lower Mississippian Exshaw Formation (Middle Bakken) and the Upper Devonian Three Forks Formation. The Lower Exshaw shale is relatively thin within the majority of this acreage block, but again, while it is generally considered to be an excellent source of hydrocarbons, it is not generally considered to be an effective reservoir.

Three Forks reservoir quality is not as apparent in this acreage package as it is to the east in the Williston Basin. There is, however, a persistent unit in the upper Three Forks that is mappable across the central portion of Big Sky Petroleum Corporation’s acreage position. This interval ranges in thickness between 0’ and 22’, but only rarely exceeds 14’ in thickness within the Americana acreage package. While the zone is mappable and represents a potential target reservoir, there was no observed density porosity and there is no record of hydrocarbon shows in any of the existing Three Forks penetrations drilled near Big Sky Petroleum Corporation’s acreage position. MHA recognizes this zone as a potential reservoir, but attaches significant risk to the possibility of it developing into a viable reservoir.

The Upper Exshaw Formation is better developed than the Three Forks across the Americana acreage block. It consists of quartzose and dolomitic silts and fine grained sands and ranges in



thickness from 30' and 90' across the majority of the Americana block. Unlike the Three Forks, the Upper Exshaw has mappable zones of effective porosity development. Porosity, as determined from density logs, ranges from a minimum of essentially 0% to a maximum of about 8%. MHA used a 6% density porosity cutoff to develop a conservative yet realistic picture of the reservoir potential. Cross sections A-A' and B-B', included in earlier submittals of this report demonstrate the overall development of the unit and some of the variation in porosity development. MHA assigns a risk factor of 70% to the probability that Big Sky Petroleum Corporation will encounter effective reservoir development thick enough to support an economic completion in the Upper Exshaw within this Americana acreage block.

Source Rocks

The relationship between reservoir and hydrocarbon source is good in the vicinity of this acreage package. The Lower Exshaw "Bakken" shale, sandwiched between the Upper Exshaw above and Three Forks below, is in direct contact with both potential reservoirs. Even though it is thin over much of this acreage block, it has been documented to have reached thermal maturity. Whether this Lower Exshaw interval is still within the oil generation window, or whether it was removed from the window, are questions that have yet to be answered and add an element of risk to this play concept.

There is a possibility that in-situ hydrocarbon generation in the vicinity of the Dome ceased or was diminished sometime in Upper Jurassic time, bringing effective charge of the Upper Exshaw or Three Forks reservoirs into question. If that is the case, effective charge of either the reservoir might be forced to rely on lateral migration of hydrocarbons from mature source to the east of this acreage package. The risks associated with this scenario are significant. Big Sky Petroleum Corporations' acreage position lies along the eastern edge of the mapped maturity limits of the Lower Exshaw shale and it thins dramatically to the east of this acreage position. MHA assigns a risk factor of 30% to the relationship between potential reservoir and adequate, effective (mature) source.

Hydrocarbon Shows

Like the Glacier Prospect to the west, none of the "Bakken" penetrations drilled prior to Big Sky Petroleum Corporations' involvement within the mapped area produce from either the Upper Exshaw or Three Forks Formations and there is no evidence of any completion attempts. Only



six wells reporting shows of hydrocarbons in either the Upper Exshaw or Three Forks Formations are within the mapped area but four of these are immediately adjacent to the acreage package. In general, all six of these shows would be considered weak. This does not mean that there were no hydrocarbon shows in this interval in the other “Bakken” penetrations. As already noted, it merely means that there was no available supporting data in the form of sample descriptions, core descriptions or mud gas analysis to document any possible shows. There is no evidence of free water recovery from any Upper Exshaw or Three Forks DST or any mention of a water wet section from either core or sample descriptions. All confirmed shows have been noted on the Upper Exshaw Isopach.

Trap

Normally, the tight carbonates of the Lodgepole and Madison provide a sufficient seal that prevents, or at least hinders, the vertical migration of hydrocarbons from the Upper Exshaw to stratigraphically younger reservoirs. For tests on this particular package of acreage, the risk of not having an effective trap is defined more by lateral migration away from the acreage rather than the presence of effective vertical seals. Without lateral seals to compartmentalize the reservoirs there is a significant risk that mobile hydrocarbons have migrated updip, toward the crest of Kevin-Sunburst Dome, as evidenced by the amount of shallow production found closer to the crest. A risk factor of 40% was assigned to the probability that Big Sky Petroleum Corporation will document effective reservoir seals and trapping conditions in test wells drilled within this acreage package.

Exploration Program

Big Sky Petroleum Corporation, with FX Energy as operator, has drilled its first exploration well on the Americana Block. The FX Big Sky Petroleum Midboe 4-3 was drilled in the NWNW 3 T34N R1E. While there were shows noted on the mudlog and minor amounts of oil recovered during swab tests, inferred volumes were clearly uneconomic. The FX Midboe 4-3 was plugged and abandoned in 2012.

Development Plan

Big Sky will wait until they see the drilling results of other companies who have staked wells in the vicinity of their lease position before they decide whether or not to drill additional wells on their Americana Block. Currently they have no plans to drill additional wells.



Conclusions: Americana Acreage Block

Through this geologic evaluation, the following observations and conclusions about the Americana Acreage Block are made:

- The acreage package lies along the eastern flank of the current day structural configuration of Kevin Sunburst Dome.
- Based on the Company's most recent sale of acreage, the current value of their gross leased properties within the Americana Block is approximately \$503,550 (\$168,300 net to Big Sky).
- The "Bakken" reached thermal maturity and generated significant amounts of liquid rich hydrocarbons either within, or near, the acreage package.
- Only one of the two "Bakken" shales is present within the Americana Block.
- The Upper Exshaw Formation (Middle Bakken) is present throughout the acreage package.
- The Upper Exshaw Formation contains zones of measurable porosity within the acreage package.
- There appears to be more Upper Exshaw potential within the majority of the acreage package than Three Forks potential.
- The Three Forks Formation is present throughout the acreage package. It contains a mappable zone of interest, but contains no mappable density porosity.
- There have been no completion attempts of Upper Exshaw or Three Forks intervals within the acreage package.
- MHA's assessment of effective source risk is approximately 30%.
- MHA's assessment of trap risk is approximately 40%.
- MHA's assessment of reservoir risk is approximately 70%.
- MHA's overall assessment of the Probability of Success for the first well drilled within this Prospect was approximately 8%. With the drilling and abandonment of the Midboe 4-3, the



overall Probability of Success for this prospect might warrant a re-evaluation and potential reduction, but will remain at approximately 8% for the time being because of the size of the acreage block and scarcity of viable tests.

- This general play concept appears to have been proven successful in wells drilled 40 miles to the west-southwest, but not within this acreage block.

Based on all of the above observations, MHA can confirm that both potential reservoirs are present within the acreage package, that there is only a good relationship between source and potential reservoir, and that the play concept targeted within the acreage package merits testing, but only if the assigned risk elements are recognized and accepted.

Statement of Risk

The accuracy of reserve and economic evaluations is always subject to uncertainty. The magnitude of this uncertainty is generally proportional to the quantity and quality of data available for analysis. As a well matures and new information becomes available, revisions may be required which may either increase or decrease the previous reserve assignments. Sometimes these revisions may result not only in a significant change to the reserves and value assigned to a property, but also may impact the total company reserve and economic status. The reserves and forecasts contained in this report were based upon a technical analysis of the available data using accepted engineering principles. However, they must be accepted with the understanding that further information and future reservoir performance subsequent to the date of the estimate may justify their revision. MHA makes no warranties concerning the data and interpretations of such data. In no event shall MHA be liable for any special or consequential damages arising from Big Sky Petroleum Corporations' use of MHA's interpretation, reports, or services produced as a result of its' work for Big Sky Petroleum Corporation.

Neither MHA, nor any of our employees, have any interest in the subject properties. Neither the employment to do this work, nor the compensation, is contingent on the results contained in this report.

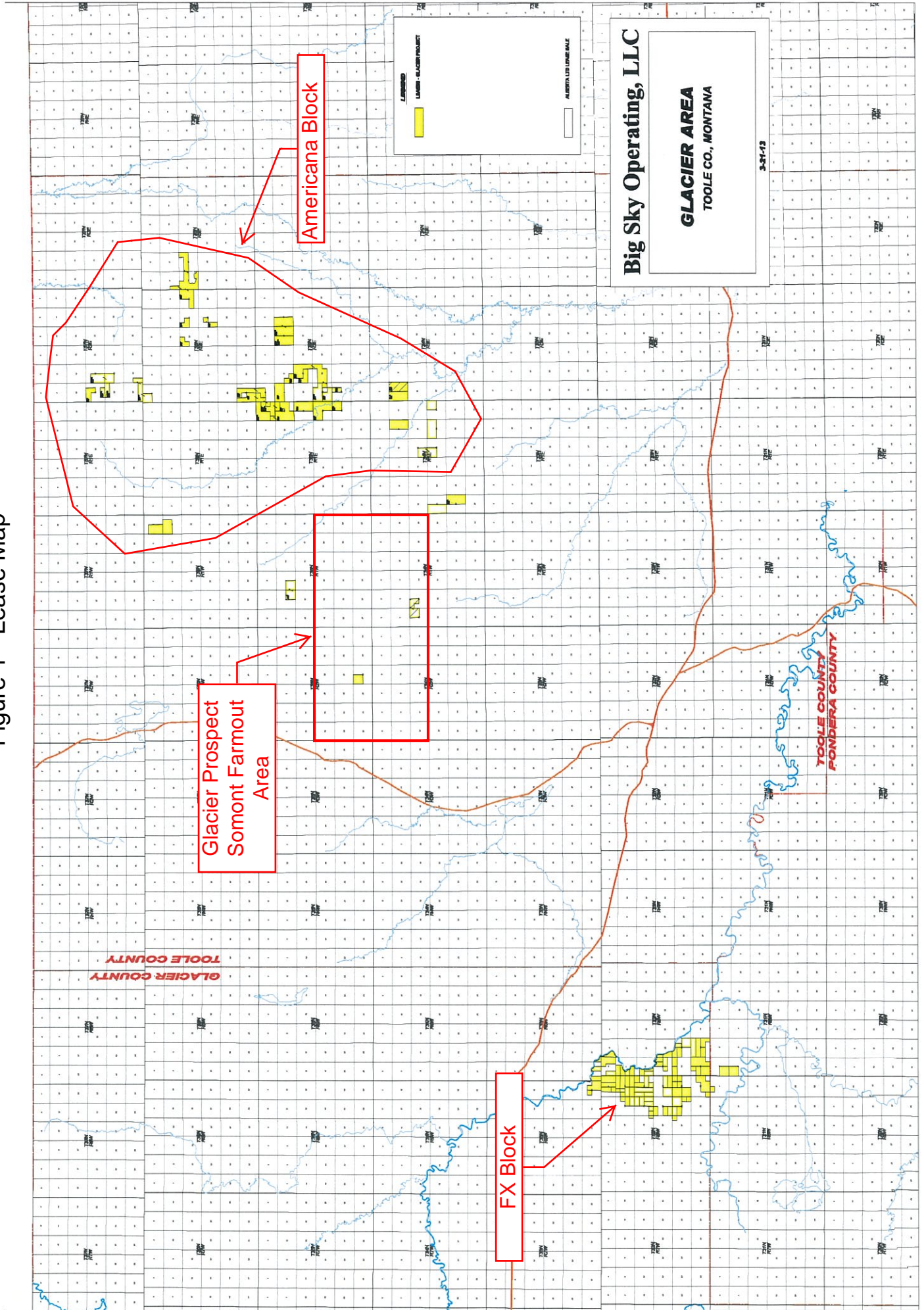
This report was prepared for the exclusive use of Big Sky Petroleum Corporation and will not be released by MHA to any other parties without Big Sky Petroleum Corporations' written



permission. Should Big Sky Petroleum Corporation choose to release this report to any party for the purpose of publication and/or distribution, Big Sky Petroleum Corporation must obtain a written release from MHA. The data and work papers used in the preparation of this report are available for examination by authorized parties in our offices.



Figure 1 - Lease Map



ANDERSON
29-5



25101217490000
T35N R1W S29
ELEV_KB : 3,521

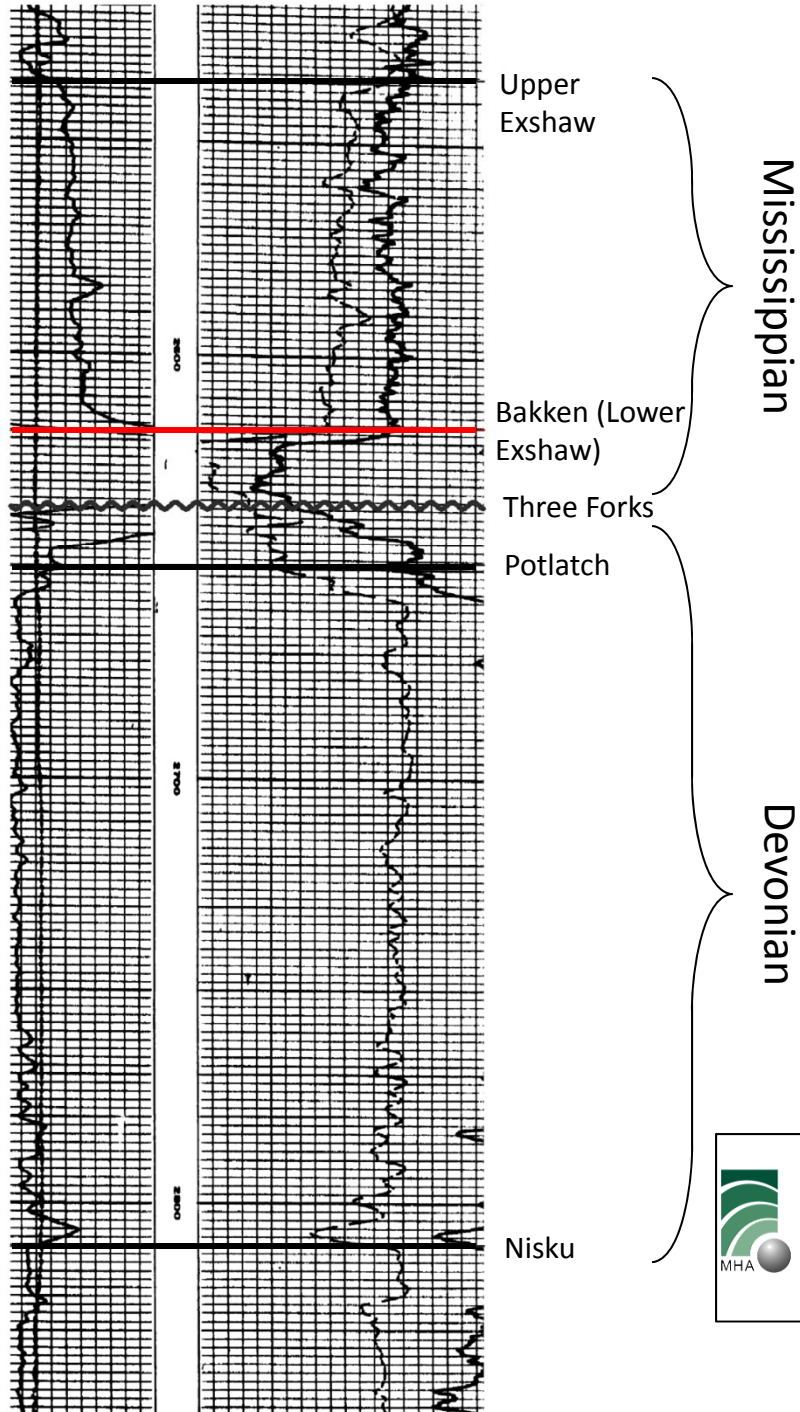


FIGURE 2
MHA Petroleum Consultants
Type Log

Table 1

Big Sky Operating LLC Inventory
As of 12/31/12

Partner Acreage Report

Tract Id	St/Cou	Sub-Tract Id	Gross Total Net Total	Gross Undev. Net Undeveloped	Gross Developed Net Developed	Gross HBP Net HBP	W.I. Deck Id	Working Int.	PARTNER SHARE		Gross Dev. Net Dev.	Gross HBP Net HBP			
									Gross Acres Net Acres	Gross Undev. Net Undev.					
PARTNER: BIGSK00003 - Big Sky Operating LLC															
PROSPECT: AM002 - Americana															
LEASE: BSO-084 - Edna Goedertz, individually and as heir to A.H. G - T36N-R02W-30															
Township 36 North, Range 2 West															
Section 30: Lot 1(33.32), NE/4NW/4, NW/4SE/4															
Township 36 North, Range 3 West															
Section 25: NE/4NE/4, NW/4, NE/4SW/4, SW/4SE/4															
MT155		25	101	100	113.320000	113.320000	0.000000	0.000000	JIB	0.333333334	0.000000	37.773334	37.773334	0.000000	0.000000
					113.320000	113.320000	0.000000	0.000000				37.773334	37.773334	0.000000	0.000000
MT156		25	101	100	280.000000	280.000000	0.000000	0.000000	JIB	0.333333334	0.000000	93.333335	93.333335	0.000000	0.000000
					280.000000	280.000000	0.000000	0.000000				93.333335	93.333335	0.000000	0.000000
LEASE: BSO-087 - Johansen Farms Inc., a Montana Corporation Exten - T33N-R01E-11															
Township 33 North, Range 1 East															
Section 11: S/2															
Township 33 North, Range 1 East															
Section 11: N/2															
MT159		25	101	100	320.000000	320.000000	0.000000	0.000000	JIB	0.333333334	0.000000	106.666668	106.666668	0.000000	0.000000
					160.000000	160.000000	0.000000	0.000000				53.333334	53.333334	0.000000	0.000000
MT160		25	101	100	320.000000	320.000000	0.000000	0.000000	JIB	0.333333334	0.000000	106.666668	106.666668	0.000000	0.000000
					320.000000	320.000000	0.000000	0.000000				106.666668	106.666668	0.000000	0.000000
LEASE: BSO-087B - Northwest Farm Credit Services FLCA #08-0302 - T33N-R01E-11															
Township 33 North, Range 1 East															
Section 11: S/2															

Table 1

Partner Acreage Report

Tract Id	S/Cou	Sub-Tract Id	Gross Total Net Total	Gross Undev. Net Undeveloped	Gross Developed Net Developed	Gross HBP Net HBP	W.I. Deck Id	Working Int.	PARTNER SHARE		Gross Dev. Net Dev.	Gross HBP Net HBP
									Gross Acres Net Acres	Gross Undev. Net Undev.		
MT159	25	101 100	320.000000 160.000000	320.000000 160.000000	0.000000 0.000000	0.000000 0.000000	JIB	0.333333334	106.666668 53.333334	106.666668 53.333334	0.000000 0.000000	0.000000 0.000000
LEASE: BSO-092A - David Brautrud, a married man dealing in his sole a - T33N-R01E-06 Township 33 North, Range 1 East Section 6: Lots 3(39.88), 4(37.34), 5(37.61), 6(37.85), 7(38.08), SE/4NW/4, E/2SW/4												
MT169	25	101 100	310.760000 25.896665	310.760000 25.896665	0.000000 0.000000	0.000000 0.000000	JIB	0.333333334	103.586668 8.632222	103.586668 8.632222	0.000000 0.000000	0.000000 0.000000
LEASE: BSO-097A - Northwest Farm Credit Services FLCA #10-0090 - T33N-R01E-04 Township 33 North, Range 1 East Section 4: SW/4												
MT218	25	101 100	160.000000 80.000000	160.000000 80.000000	0.000000 0.000000	0.000000 0.000000	JIB	0.333333334	53.333334 26.666667	53.333334 26.666667	0.000000 0.000000	0.000000 0.000000
LEASE: BSO-097B - Northwest Farm Credit Services FLCA #10-0091 - T33N-R01E-05 Township 33 North, Range 1 East Section 5: SE/4												
MT219	25	101 100	160.000000 80.000000	160.000000 80.000000	0.000000 0.000000	0.000000 0.000000	JIB	0.333333334	53.333334 26.666667	53.333334 26.666667	0.000000 0.000000	0.000000 0.000000
LEASE: BSO-106 - Harold A. Frys as Trustee of the Harold A. Frys - T33N-R01E-03 Township 33 North, Range 1 East Section 3: S/2NW/4												
Township 34 North, Range 1 East (Tanglewood 50%) Section 25: E/2, E/2NW/4												
MT197	25	101 100	80.000000 40.000000	80.000000 40.000000	0.000000 0.000000	0.000000 0.000000	JIB-1	0.166666666	13.333332 6.666666	13.333332 6.666666	0.000000 0.000000	0.000000 0.000000
MT198	25	101 100	400.000000 300.000000	400.000000 300.000000	0.000000 0.000000	0.000000 0.000000	JIB	0.333333334	133.333336 100.000002	133.333336 100.000002	0.000000 0.000000	0.000000 0.000000
LEASE: BSO-106A - Northwest Farm Credit Services FLCA #10-0089 - T33N-R01E-03 Township 33 North, Range 1 East Section 3: Lots 3, 4, S/2NW/4, SW/4												

Table 1

Partner Acreage Report

Tract Id	St/Cou	Sub-Tract Id	Gross Total Net Total	Gross Undev. Net Undeveloped	Gross Developed Net Developed	Gross HBP Net HBP	W.I. Deck Id	Working Int.	PARTNER SHARE		Gross Dev. Net Dev.	Gross HBP Net HBP
									Gross Acres Net Acres	Gross Undev. Net Undev.		
MT217	25	101 100	80.000000 40.000000	80.000000 40.000000	0.000000 0.000000	0.000000 0.000000	JIB	0.333333334	26.666667 13.333333	26.666667 13.333333	0.000000 0.000000	0.000000 0.000000
MT468	25	101 100	239.560000 119.780000	239.560000 119.780000	0.000000 0.000000	0.000000 0.000000	JIB	0.333333334	79.853334 39.926667	79.853334 39.926667	0.000000 0.000000	0.000000 0.000000
LEASE: BSO-107 - Donald H. Greetan, husband and - T33N-R01E-06 Township 33 North, Range 1 East Section 6: Lot 1(39.72), SE/4NE/4												
MT199	25	101 100	79.720000 19.930000	79.720000 19.930000	0.000000 0.000000	0.000000 0.000000	JIB	0.333333334	26.573333 6.643333	26.573333 6.643333	0.000000 0.000000	0.000000 0.000000
LEASE: BSO-107A - Lorraine Church, a married woman dealing in her so - T33N-R01E-06 Township 33 North, Range 1 East Section 6: Lot 1(39.72), SE/4NE/4												
MT199	25	101 100	79.720000 19.930000	79.720000 19.930000	0.000000 0.000000	0.000000 0.000000	JIB	0.333333334	26.573333 6.643333	26.573333 6.643333	0.000000 0.000000	0.000000 0.000000
LEASE: BSO-107B - Lola Barkley, a single woman - T33N-R01E-06 Township 33 North, Range 1 East Section 6: Lot 1(39.72), SE/4NE/4												
MT199	25	101 100	79.720000 19.930000	79.720000 19.930000	0.000000 0.000000	0.000000 0.000000	JIB	0.333333334	26.573333 6.643333	26.573333 6.643333	0.000000 0.000000	0.000000 0.000000
LEASE: BSO-107C - Richard L. Greetan, a married man dealing in his s - T33N-R01E-06 Township 33 North, Range 1 East Section 6: Lot 1, (39.72), SE/4NE/4												
MT199	25	101 100	79.720000 19.930000	79.720000 19.930000	0.000000 0.000000	0.000000 0.000000	JIB	0.333333334	26.573333 6.643333	26.573333 6.643333	0.000000 0.000000	0.000000 0.000000
LEASE: BSO-108 - Jerry J. Jacobson, a married man dealing in his so - T33N-R01E-05 Township 33 North, Range 1 East Section 5: SW/4												
MT199	25	101 100	79.720000 19.930000	79.720000 19.930000	0.000000 0.000000	0.000000 0.000000	JIB	0.333333334	26.573333 6.643333	26.573333 6.643333	0.000000 0.000000	0.000000 0.000000
Township 33 North, Range 1 East Section 6: SE/4												

Table 1

Partner Acreage Report

Tract Id	S/Cou	Sub-Tract Id	Gross Total Net Total	Gross Undev. Net Undeveloped	Gross Developed Net Developed	Gross HBP Net HBP	W.I. Deck Id	Working Int.	PARTNER SHARE		Gross Dev. Net Dev.	Gross HBP Net HBP
									Gross Acres Net Acres	Gross Undev. Net Undev.		
MT200	25	101	180.000000 40.000000	160.000000 40.000000	0.000000 0.000000	0.000000 0.000000	JIB	0.333333334	53.3333334 13.3333333	53.3333334 13.3333333	0.000000 0.000000	0.000000 0.000000
MT201	25	101	160.000000 40.000000	160.000000 40.000000	0.000000 0.000000	0.000000 0.000000	JIB	0.333333334	53.3333334 13.3333333	53.3333334 13.3333333	0.000000 0.000000	0.000000 0.000000
LEASE: BSO-111 - Donald R. Rhoda and Betty N. Rhoda, husband and wi - T33N-R01E-13												
Township 33 North, Range 1 East												
Section 13: NE/4NW/4												
Township 33 North, Range 1 East												
Section 13: W/2NW/4, SE/4NW/4, NE/4												
Rhoda 3-13												
MT204	25	101	40.000000 6.6666666	0.000000 0.000000	40.000000 6.6666666	40.000000 6.6666666	JIB	0.266666666	10.6666666 1.7777777	10.6666666 1.7777777	0.000000 1.7777777	10.6666666 1.7777777
MT205	25	101	280.000000 46.6666664	280.000000 46.6666664	0.000000 0.000000	280.000000 46.6666664	JIB	0.266666666	74.6666664 12.4444443	74.6666664 12.4444443	0.000000 0.000000	74.6666664 12.4444443
LEASE: BSO-111A - Margaret Melville and Jerry Melville, wife and hus - T33N-R01E-13												
Township 33 North, Range 1 East												
Section 13: NE/4NW/4												
Township 33 North, Range 1 East												
Section 13: W/2NW/4, SE/4NW/4, NE/4												
Rhoda 3-13												
MT204	25	101	40.000000 15.000000	0.000000 0.000000	40.000000 15.000000	40.000000 15.000000	JIB	0.266666666	10.6666666 3.9999999	10.6666666 3.9999999	0.000000 0.000000	10.6666666 3.9999999
MT205	25	101	280.000000 105.000000	280.000000 105.000000	0.000000 0.000000	280.000000 105.000000	JIB	0.266666666	74.6666664 27.9999999	74.6666664 27.9999999	0.000000 0.000000	74.6666664 27.9999999
LEASE: BSO-111B - Howard Mitchell and Dorothy Mitchell, husband and - T33N-R01E-13												
Township 33 North, Range 1 East												
Section 13: NE/4NW/4												

Table 1

Partner Acreage Report

Tract Id	SI/Cou	Sub-Tract Id	Gross Total Net Total	Gross Undev. Net Undeveloped	Gross Developed Net Developed	Gross HBP Net HBP	W.I. Deck Id	Working Int	PARTNER SHARE		Gross Dev. Net Dev.	Gross HBP Net HBP
									Gross Acres Net Acres	Gross Undev. Net Undev.		
Township 33 North, Range 1 East Section 13: W/2NW/4, SE/4NW/4, NE/4												
Rhoda 3-13												
MT204	25	101 200	40.000000 3.333333	0.000000 0.000000	40.000000 3.333333	40.000000 3.333333	JIB	0.26666666	10.666666 0.888888	0.000000 0.000000	10.666666 0.888888	10.666666 0.888888
MT205	25	101 200	280.000000 23.333335	280.000000 23.333335	0.000000 0.000000	280.000000 23.333335	JIB	0.26666666	74.666664 6.222222	74.666664 6.222222	0.000000 0.000000	74.666664 6.222222
LEASE: BSO-111C - Eunice Matzdorf Christman and Richard C. Christman - T33N-R01E-13												
Township 33 North, Range 1 East Section 13: NE/4NW/4												
Township 33 North, Range 1 East Section 13: W/2NW/4, SE/4NW/4, NE/4												
Rhoda 3-13												
MT204	25	101 200	40.000000 15.000000	0.000000 0.000000	40.000000 15.000000	40.000000 15.000000	JIB	0.26666666	10.666666 3.999999	0.000000 0.000000	10.666666 3.999999	10.666666 3.999999
MT205	25	101 200	280.000000 105.000000	280.000000 105.000000	0.000000 0.000000	280.000000 105.000000	JIB	0.26666666	74.666664 27.999999	74.666664 27.999999	0.000000 0.000000	74.666664 27.999999
LEASE: BSO-112 - Jean D. Dinsmore, aka Jean Driscoll Dinsmore, a wo - T33N-R01E-13												
Township 33 North, Range 1 East Section 13: SE/4												
Township 33 North, Range 1 East Section 13: SW/4												
Driscoll 16-13R												
MT206	25	101 200	160.000000 60.000000	0.000000 0.000000	160.000000 60.000000	160.000000 60.000000	JIB	0.26666666	42.666665 15.999999	0.000000 0.000000	42.666665 15.999999	42.666665 15.999999
MT207	25	101 200	160.000000 60.000000	0.000000 0.000000	160.000000 60.000000	160.000000 60.000000	JIB	0.26666666	42.666665 15.999999	0.000000 0.000000	42.666665 15.999999	42.666665 15.999999

Table 1

Partner Acreage Report

Tract Id	SI/Cou	Sub-Tract Id	Gross Total Net Total	Gross Undev. Net Undeveloped	Gross Developed Net Developed	Gross HBP Net HBP	W.I. Deck Id	Working Int.	PARTNER SHARE		Gross HBP Net HBP	
									Gross Acres Net Acres	Gross Undev. Net Undev.		
LEASE: BSO-112A - James D. Driscoll, a man dealing in his sole and s - T33N-R01E-13												
Township 33 North, Range 1 East												
Section 13: SE/4												
Township 33 North, Range 1 East												
Section 13: SW/4												
Driscoll 16-13R												
MT206	25	101	200	160.000000	0.000000	160.000000	160.000000	JIB	0.2666666666	42.666665	0.000000	42.666665
			60.000000	0.000000	60.000000	60.000000				15.999999	0.000000	15.999999
MT207	25	101	200	160.000000	0.000000	160.000000	160.000000	JIB	0.2666666666	42.666665	0.000000	42.666665
			60.000000	0.000000	60.000000	60.000000				15.999999	0.000000	15.999999
LEASE: BSO-112B - Maxine D. Fisk, aka Maxine Driscoll Fisk, a woman - T33N-R01E-13												
Township 33 North, Range 1 East												
Section 13: SE/4												
Township 33 North, Range 1 East												
Section 13: SW/4												
Driscoll 16-13R												
MT206	25	101	200	160.000000	0.000000	160.000000	160.000000	JIB	0.2666666666	42.666665	0.000000	42.666665
			40.000000	0.000000	40.000000	40.000000				10.666666	0.000000	10.666666
MT207	25	101	200	160.000000	0.000000	160.000000	160.000000	JIB	0.2666666666	42.666665	0.000000	42.666665
			40.000000	0.000000	40.000000	40.000000				10.666666	0.000000	10.666666
LEASE: BSO-113 - Donna Mae Westler, a woman - T33N-R01E-25												
Township 33 North, Range 1 East												
Section 25: NE/4NE/4												
Township 33 North, Range 1 East												
Section 25: SE/4, W/2NE/4, SE/4NE/4												
Hellinger 1-25												

Table 1

Partner Acreage Report

Tract Id	St/Cou	Sub-Tract Id	Gross Total Net Total	Gross Undev. Net Undeveloped	Gross Developed Net Developed	Gross HBP Net HBP	W.I. Deck Id	Working Int.	PARTNER SHARE		Gross Dev. Net Dev.	Gross HBP Net HBP
									Gross Acres Net Acres	Gross Undev. Net Undev.		
MT208	25	101 200	40.000000 20.000000	0.000000 0.000000	40.000000 20.000000	40.000000 20.000000	JIB	0.26666666	10.666666 5.333333	0.000000 0.000000	10.666666 5.333333	10.666666 5.333333
MT209	25	101 100	280.000000 140.000000	280.000000 140.000000	0.000000 0.000000	280.000000 140.000000	JIB	0.26666666	74.666664 37.333332	74.666664 37.333332	0.000000 0.000000	74.666664 37.333332
LEASE: BSO-113A - Doris Ann Morse, a woman - T33N-R01E-25 Township 33 North, Range 1 East Section 25: NE/4NE/4												
Township 33 North, Range 1 East Section 25: SE/4, W/2NE/4, SE/4NE/4												
Hellingner 1-25												
MT208	25	101 200	40.000000 20.000000	0.000000 0.000000	40.000000 20.000000	40.000000 20.000000	JIB	0.26666666	10.666666 5.333333	0.000000 0.000000	10.666666 5.333333	10.666666 5.333333
MT209	25	101 100	280.000000 140.000000	280.000000 140.000000	0.000000 0.000000	280.000000 140.000000	JIB	0.26666666	74.666664 37.333332	74.666664 37.333332	0.000000 0.000000	74.666664 37.333332
LEASE: BSO-114 - Phillip MachHale, individually and as Personal Repre - T33N-R01E-01 Township 33 North, Range 1 East Section 1: SE/4												
Drake 13-1												
Township 33 North, Range 1 East Section 12: NE/4												
Drake 4-12	25	101 200	160.000000 40.000000	0.000000 0.000000	160.000000 40.000000	160.000000 40.000000	JIB	0.06666666	10.666665 2.666666	0.000000 0.000000	10.666665 2.666666	10.666665 2.666666
MT210	25	101 200	160.000000 40.000000	0.000000 0.000000	160.000000 40.000000	160.000000 40.000000	JIB	0.06666666	10.666665 2.666666	0.000000 0.000000	10.666665 2.666666	10.666665 2.666666
MT211	25	101 200	160.000000 40.000000	0.000000 0.000000	160.000000 40.000000	160.000000 40.000000	JIB	0.06666666	10.666665 2.666666	0.000000 0.000000	10.666665 2.666666	10.666665 2.666666
LEASE: BSO-114A - Patricia M. Shoemaker, and Richmond A. Shoemaker, - T33N-R01E-01 Township 33 North, Range 1 East												

Table 1

Partner Acreage Report

Tract Id	S/Cou	Sub-Tract Id	Gross Total Net Total	Gross Undev. Net Undeveloped	Gross Developed Net Developed	Gross HBP Net HBP	W.I. Deck Id	Working Int.	PARTNER SHARE		Gross Dev. Net Dev.	Gross HBP Net HBP
									Gross Acres Net Acres	Gross Undev. Net Undev.		
Section 1: SE/4												
Drake 13-1												
Township 33 North, Range 1 East												
Section 12: NE/4												
Drake 4-12												
MT210	25	101 200	160.000000 40.000000	0.000000 0.000000	160.000000 40.000000	160.000000 40.000000	JIB	0.06666666	0.000000 0.000000	10.666665 2.666666	10.666665 2.666666	10.666665 2.666666
MT211	25	101 200	160.000000 40.000000	0.000000 0.000000	160.000000 40.000000	160.000000 40.000000	JIB	0.06666666	0.000000 0.000000	10.666665 2.666666	10.666665 2.666666	10.666665 2.666666
LEASE: BSO-115 - Margret K. Persha - T33N-R01E-12												
Only insofar as lease covers:												
Township 33 North, Range 1 East												
Section 12: SE/4												
Only insofar as lease covers:												
Township 33 North, Range 1 East												
Section 12: SW/4												
Drake 4-12												
MT212	25	101 100	160.000000 80.000000	160.000000 80.000000	0.000000 0.000000	160.000000 80.000000	JIB	0.12000000	19.200000 9.600000	0.000000 0.000000	0.000000 0.000000	19.200000 9.600000
MT213	25	101 200	160.000000 80.000000	0.000000 0.000000	160.000000 80.000000	160.000000 80.000000	JIB-01	0.12000000	19.200000 9.600000	0.000000 0.000000	19.200000 9.600000	19.200000 9.600000
LEASE: BSO-123 - Montana State of No. OG-36515-05 - T33N-R01E-06												
Township 33 North, Range 1 East												
Section 6: Lot 2, SW/4NE/4												
MT222	25	101 100	79.800000 79.800000	79.800000 79.800000	0.000000 0.000000	0.000000 0.000000	JIB	0.33333334	26.600000 26.600000	0.000000 0.000000	0.000000 0.000000	0.000000 0.000000

Table 1

Partner Acreage Report

Tract Id	SVCou	Sub-Tract Id	Gross Total Net Total	Gross Undev. Net Undeveloped	Gross Developed Net Developed	Gross HBP Net HBP	W.I. Deck Id	Working Int.	PARTNER SHARE		Gross Dev. Net Dev.	Gross HBP Net HBP
									Gross Acres Net Acres	Gross Undev. Net Undev.		
LEASE: BSO-126 - Charline O. Lindquist, a single woman Lease Exten - T33N-R01E-09												
Township 33 North, Range 1 East												
Section 9: E/2												
MT224	25	101 100	320.000000 160.000000	320.000000 160.000000	0.000000 0.000000	0.000000 0.000000	JIB	0.333333334	106.666668 53.333334	106.666668 53.333334	0.000000 0.000000	0.000000 0.000000
LEASE: BSO-126A - Lois Bell, a married woman dealing in her sole and - T33N-R01E-09												
Township 33 North, Range 1 East												
Section 9: E/2												
MT224	25	101 100	320.000000 160.000000	320.000000 160.000000	0.000000 0.000000	0.000000 0.000000	JIB	0.333333334	106.666668 53.333334	106.666668 53.333334	0.000000 0.000000	0.000000 0.000000
LEASE: BSO-130 - Fredrick W. Ziegler Trust The Marshall & lislely Tr - T33N-R01E-08												
Township 33 North, Range 1 East												
Section 8: E/2SW/4, S/2SE/4												
MT231	25	101 100	160.000000 160.000000	160.000000 160.000000	0.000000 0.000000	0.000000 0.000000	JIB	0.333333334	53.333334 53.333334	53.333334 53.333334	0.000000 0.000000	0.000000 0.000000
LEASE: BSO-131 - Courtney Collier-Rudbach, formerly known as Courtn - T33N-R01E-09												
Township 33 North, Range 1 East												
Section 9: W/2												
MT232	25	101 100	320.000000 320.000000	320.000000 320.000000	0.000000 0.000000	0.000000 0.000000	JIB	0.333333334	106.666668 106.666668	106.666668 106.666668	0.000000 0.000000	0.000000 0.000000
LEASE: BSO-134 - Northwest Farm Credit Services FLCA #09-0086 - T33N-R01E-02												
Township 33 North, Range 1 East												
Section 2: Lots 1, 2, 3, 4, S/2N/2, S/2												
MT235	25	101 100	639.480000 319.740000	639.480000 319.740000	0.000000 0.000000	0.000000 0.000000	JIB	0.333333334	213.160004 106.580002	213.160004 106.580002	0.000000 0.000000	0.000000 0.000000
LEASE: BSO-136 - Virginia M. Stohr, a woman dealing in her sole and - T33N-R02E-21												
Township 34 North, Range 1 East												
Section 14: S/2												

Table 1

Partner Acreage Report

Tract Id	S/Cou	Sub-Tract Id	Gross Total		Gross Undev.		Gross Developed		Gross HBP		W.I. Deck Id	Working Int.	PARTNER SHARE		Gross Dev.		Gross HBP	
			Net Total	Net Undeveloped	Net Undeveloped	Net Developed	Net HBP	Net HBP	Net Acres	Gross Undev.			Net Dev.	Net HBP	Net Dev.	Net HBP		
MT293	25	101	100	320,000,000	320,000,000	39,200,000	0,000,000	0,000,000	0,000,000	0,000,000	JIB	0.16666666	53.333333	53.333333	0,000,000	0,000,000	0,000,000	0,000,000
LEASE: BSO-136A - William D. Pletsch and Kathleen H. Pletsch, husband - T33N-R02E-21																		
Only insofar as lease covers:																		
Township 34 North, Range 1 East																		
Section 14: S/2																		
MT293	25	101	100	320,000,000	320,000,000	39,200,000	0,000,000	0,000,000	0,000,000	0,000,000	JIB	0.16666666	53.333333	53.333333	0,000,000	0,000,000	0,000,000	0,000,000
LEASE: BSO-136B - Bruce Donald Pletsch, Trustee of the Donald J. Ple - T34N-R01E-14																		
Township 34 North, Range 1 East																		
Section 14: S/2																		
MT293	25	101	100	320,000,000	320,000,000	158,400,000	0,000,000	0,000,000	0,000,000	0,000,000	JIB	0.16666666	53.333333	53.333333	0,000,000	0,000,000	0,000,000	0,000,000
LEASE: BSO-139A - Irene Berglund, a widow Lease Extension effective - T34N-R01E-07																		
Township 34 North, Range 1 East																		
Section 7: Lots 3(35.07), 4(35.17), S/2NE/4, E/2SW/4, SE/4																		
Township 34 North, Range 1 East																		
Section 8: S/2NW/4, SW/4NE/4																		
MT244	25	101	100	390,240,000	390,240,000	146,340,000	0,000,000	0,000,000	0,000,000	0,000,000	JIB	0.16666666	65.039997	65.039997	0,000,000	0,000,000	0,000,000	0,000,000
MT245	25	101	100	120,000,000	120,000,000	45,000,000	0,000,000	0,000,000	0,000,000	0,000,000	JIB	0.16666666	19.999999	19.999999	0,000,000	0,000,000	0,000,000	0,000,000
MT261	25	101	100	120,000,000	120,000,000	0,000,000	0,000,000	0,000,000	0,000,000	0,000,000	JIB	0.16666666	19.999999	19.999999	0,000,000	0,000,000	0,000,000	0,000,000

LEASE: BSO-139B - Mary A. Sundboom, a widow Extension of Oil and Gas - T34N-R01E-07

Township 34 North, Range 1 East

Section 7: Lots 3(35.07), 4(35.17), S/2NE/4, E/2SW/4, SE/4

Township 34 North, Range 1 East

Section 8: S/2NW/4, SW/4NE/4

Table 1

Partner Acreage Report

Tract Id	SI/Cou	Sub-Tract Id	Gross Total		Gross Undev.		Gross Developed		Gross HBP		W.I. Deck Id	Working Int.	PARTNER SHARE		Gross Dev.		Gross HBP	
			Net Total	Net Undeveloped	Net Undeveloped	Net Developed	Net HBP	Net HBP	Gross Acres	Net Undev.			Net Dev.	Net HBP				
MT244	25	101	390.240000	390.240000	0.000000	0.000000	0.000000	0.000000	0.000000	0.000000	JIB	0.166666666	65.039997	11.381999	0.000000	0.000000	0.000000	0.000000
			68.292000	68.292000	0.000000	0.000000	0.000000	0.000000	0.000000	0.000000		0.166666666	19.999999	3.499999	0.000000	0.000000	0.000000	0.000000
MT245	25	101	120.000000	120.000000	0.000000	0.000000	0.000000	0.000000	0.000000	0.000000	JIB	0.166666666	19.999999	3.499999	0.000000	0.000000	0.000000	0.000000
			21.000000	21.000000	0.000000	0.000000	0.000000	0.000000	0.000000	0.000000		0.166666666	19.999999	3.499999	0.000000	0.000000	0.000000	0.000000
MT261	25	101	120.000000	120.000000	0.000000	0.000000	0.000000	0.000000	0.000000	0.000000	JIB	0.166666666	19.999999	3.499999	0.000000	0.000000	0.000000	0.000000
			0.000000	0.000000	0.000000	0.000000	0.000000	0.000000	0.000000	0.000000			0.000000	0.000000	0.000000	0.000000	0.000000	0.000000
LEASE: BSO-139C - John I. Richardson and Celestine Berlund Richards - T34N-R01E-18																		
Township 34 North, Range 1 East																		
Section 18: NW/4NE/4, S/2NE/4																		
MT261	25	101	120.000000	120.000000	0.000000	0.000000	0.000000	0.000000	0.000000	0.000000	JIB	0.166666666	19.999999	4.999999	0.000000	0.000000	0.000000	0.000000
			30.000000	30.000000	0.000000	0.000000	0.000000	0.000000	0.000000	0.000000			4.999999	19.999999	0.000000	0.000000	0.000000	0.000000
LEASE: BSO-139D - Mary A. Sundboom, a widow - T34N-R01E-18																		
Township 34 North, Range 1 East																		
Section 18: NW/4NE/4, S/2NE/4																		
MT261	25	101	120.000000	120.000000	0.000000	0.000000	0.000000	0.000000	0.000000	0.000000	JIB	0.166666666	19.999999	3.499999	0.000000	0.000000	0.000000	0.000000
			21.000000	21.000000	0.000000	0.000000	0.000000	0.000000	0.000000	0.000000			3.499999	19.999999	0.000000	0.000000	0.000000	0.000000
LEASE: BSO-139E - Irene M. Berglund, a widow - T34N-R01E-18																		
Township 34 North, Range 1 East																		
Section 18: NW/4NE/4, S/2NE/4																		
MT261	25	101	120.000000	120.000000	0.000000	0.000000	0.000000	0.000000	0.000000	0.000000	JIB	0.166666666	19.999999	3.499999	0.000000	0.000000	0.000000	0.000000
			45.000000	45.000000	0.000000	0.000000	0.000000	0.000000	0.000000	0.000000			7.499999	19.999999	0.000000	0.000000	0.000000	0.000000
LEASE: BSO-139F - Daniel Miles, a married man dealing in his sole an - T34N-R01E-07																		
Township 34 North, Range 1 East																		
Section 7: Lots 3(35.07), 4(35.17), S/2NE/4, E/2SW/4, SE/4																		
MT261	25	101	120.000000	120.000000	0.000000	0.000000	0.000000	0.000000	0.000000	0.000000	JIB	0.166666666	19.999999	7.499999	0.000000	0.000000	0.000000	0.000000
			45.000000	45.000000	0.000000	0.000000	0.000000	0.000000	0.000000	0.000000			7.499999	19.999999	0.000000	0.000000	0.000000	0.000000
Township 34 North, Range 1 East																		
Section 8: S/2NW/4, SW/4NE/4																		
Township 34 North, Range 1 East																		
Section 18: NW/4NE/4, S/2NE/4																		

Table 1

Partner Acreage Report

Tract Id	S/Cou	Sub-Tract Id	Gross Total		Gross Undev.		Gross Developed		Gross HBP		W.I. Deck Id	Working Int.	PARTNER SHARE		Gross Dev.		Gross HBP	
			Net Total	Net Undeveloped	Net Undeveloped	Net Developed	Net HBP	Net HBP	Gross Acres	Gross Undev.			Net Dev.	Net HBP				
MT244	25	101	390.240000	390.240000	6.505300	0.000000	0.000000	0.000000	0.000000	0.000000	JIB	0.16666666	65.039997	1.084216	0.000000	0.000000	0.000000	0.000000
MT245	25	101	120.000000	120.000000	2.000400	0.000000	0.000000	0.000000	0.000000	0.000000	JIB	0.16666666	19.999999	0.333399	0.000000	0.000000	0.000000	0.000000
MT261	25	101	120.000000	120.000000	2.000400	0.000000	0.000000	0.000000	0.000000	0.000000	JIB	0.16666666	19.999999	0.333399	0.000000	0.000000	0.000000	0.000000
LEASE: BSO-139G - Joyce Kinsman, a married woman dealing in her sole - T34N-R01E-07 Township 34 North, Range 1 East Section 7: Lots 3(35.07), 4(35.17), S/2NE/4, E/2SW/4, SE/4																		
Township 34 North, Range 1 East Section 8: S/2NW/4, SW/4NE/4																		
Township 34 North, Range 1 East Section 18: NW/4NE/4, S/2NE/4																		
MT244	25	101	390.240000	390.240000	6.505300	0.000000	0.000000	0.000000	0.000000	0.000000	JIB	0.16666666	65.039997	1.084216	0.000000	0.000000	0.000000	0.000000
MT245	25	101	120.000000	120.000000	2.000400	0.000000	0.000000	0.000000	0.000000	0.000000	JIB	0.16666666	19.999999	0.333399	0.000000	0.000000	0.000000	0.000000
MT261	25	101	120.000000	120.000000	2.000400	0.000000	0.000000	0.000000	0.000000	0.000000	JIB	0.16666666	19.999999	0.333399	0.000000	0.000000	0.000000	0.000000
LEASE: BSO-139H - Pamela Austed, a married woman dealing in her sole - T34N-R01E-07 Township 34 North, Range 1 East Section 7: Lots 3(35.07), 4(35.17), S/2NE/4, E/2SW/4, SE/4																		
Township 34 North, Range 1 East Section 8: S/2NW/4, SW/4NE/4																		
Township 34 North, Range 1 East Section 18: NW/4NE/4, S/2NE/4																		
MT244	25	101	390.240000	390.240000	6.501398	0.000000	0.000000	0.000000	0.000000	0.000000	JIB	0.16666666	65.039997	1.083566	0.000000	0.000000	0.000000	0.000000

Table 1

Partner Acreage Report

Tract Id	S/Cou	Sub-Tract Id	Gross Total Net Total	Gross Undev. Net Undeveloped	Gross Developed Net Developed	Gross HBP Net HBP	W.I. Deck Id	Working Int.	Gross Acres Net Acres	PARTNER SHARE		Gross Dev. Net Dev.	Gross HBP Net HBP
										Gross Undev.	Net Undev.		
MT245	25	101	120,000,000 1,999,200	120,000,000 1,999,200	0,000,000 0,000,000	0,000,000 0,000,000	JIB	0.166666666	19,999,999 0,333,199	19,999,999 0,333,199	0,000,000 0,000,000	0,000,000 0,000,000	
MT261	25	101	120,000,000 2,000,400	120,000,000 2,000,400	0,000,000 0,000,000	0,000,000 0,000,000	JIB	0.166666666	19,999,999 0,333,399	19,999,999 0,333,399	0,000,000 0,000,000	0,000,000 0,000,000	
LEASE: BSO-139J - Sharon K. Miles, individually and as heir to Micha - T34N-R01E-07													
Township 34 North, Range 1 East													
Section 7: Lots 3(35.07), 4(35.17), S/2NE/4, E/2SW/4, SE/4													
Township 34 North, Range 1 East													
Section 8: S/2NW/4, SW/4NE/4													
Township 34 North, Range 1 East													
Section 18: NW/4NE/4, S/2NE/4													
MT244	25	101	390,240,000 9,756,000	390,240,000 9,756,000	0,000,000 0,000,000	0,000,000 0,000,000	JIB	0.166666666	65,039,997 1,625,999	65,039,997 1,625,999	0,000,000 0,000,000	0,000,000 0,000,000	
MT245	25	101	120,000,000 3,000,000	120,000,000 3,000,000	0,000,000 0,000,000	0,000,000 0,000,000	JIB	0.166666666	19,999,999 0,499,999	19,999,999 0,499,999	0,000,000 0,000,000	0,000,000 0,000,000	
MT261	25	101	120,000,000 3,000,000	120,000,000 3,000,000	0,000,000 0,000,000	0,000,000 0,000,000	JIB	0.166666666	19,999,999 0,499,999	19,999,999 0,499,999	0,000,000 0,000,000	0,000,000 0,000,000	
LEASE: BSO-139J - Janice Evans, a widow - T34N-R01E-07													
Township 34 North, Range 1 East													
Section 7: Lots 3(35.07), 4(35.17), S/2NE/4, E/2SW/4, SE/4													
Township 34 North, Range 1 East													
Section 8: S/2NW/4, SW/4NE/4													
Township 34 North, Range 1 East													
Section 18: NW/4NE/4, S/2NE/4													
MT244	25	101	390,240,000 6,505,300	390,240,000 6,505,300	0,000,000 0,000,000	0,000,000 0,000,000	JIB	0.166666666	65,039,997 1,084,216	65,039,997 1,084,216	0,000,000 0,000,000	0,000,000 0,000,000	
MT245	25	101	120,000,000 2,000,400	120,000,000 2,000,400	0,000,000 0,000,000	0,000,000 0,000,000	JIB	0.166666666	19,999,999 0,333,399	19,999,999 0,333,399	0,000,000 0,000,000	0,000,000 0,000,000	

Table 1

Partner Acreage Report

Tract Id	Sf/Cou	Sub-Tract Id	Gross Total		Gross Undev.		Gross Developed		Gross HBP		W.I. Deck Id	Working Int.	PARTNER SHARE		Gross Dev.		Gross HBP	
			Net Total	Net Undeveloped	Net Developed	Net HBP	Net HBP	Net Undev.	Net Acres	Gross Undev.			Net Dev.	Net HBP	Net Dev.	Net HBP		
MT261	25	101	120.000000	120.000000	2.000400	2.000400	0.000000	0.000000	0.000000	0.000000	JIB	0.166666666	19.999999	19.999999	0.000000	0.000000	0.000000	0.000000
LEASE: BSO-139K - Catherine Bonde, a married woman dealing in her so - T34N-R01E-07																		
Township 34 North, Range 1 East																		
Section 7: Lots 3(35.07), 4(35.17), S/2NE/4, E/2SW/4, SE/4																		
Township 34 North, Range 1 East																		
Section 8: S/2NW/4, SW/4NE/4																		
Township 34 North, Range 1 East																		
Section 18: NW/4NE/4, S/2NE/4																		
MT244	25	101	390.240000	390.240000	6.501398	6.501398	0.000000	0.000000	0.000000	0.000000	JIB	0.166666666	65.039997	65.039997	0.000000	0.000000	0.000000	0.000000
MT245	25	101	120.000000	120.000000	1.999200	1.999200	0.000000	0.000000	0.000000	0.000000	JIB	0.166666666	19.999999	19.999999	0.000000	0.000000	0.000000	0.000000
MT261	25	101	120.000000	120.000000	2.000400	2.000400	0.000000	0.000000	0.000000	0.000000	JIB	0.166666666	19.999999	19.999999	0.000000	0.000000	0.000000	0.000000
LEASE: BSO-139L - Patrick Miles, a married man dealing in his sole a - T34N-R01E-07																		
Township 34 North, Range 1 East																		
Section 7: Lots 3(35.07), 4(35.17), S/2NE/4, E/2SW/4, SE/4																		
Township 34 North, Range 1 East																		
Section 8: S/2NW/4, SW/4NE/4																		
Township 34 North, Range 1 East																		
Section 18: NW/4NE/4, S/2NE/4																		
MT244	25	101	390.240000	390.240000	9.756000	9.756000	0.000000	0.000000	0.000000	0.000000	JIB	0.166666666	65.039997	65.039997	0.000000	0.000000	0.000000	0.000000
MT245	25	101	120.000000	120.000000	3.000000	3.000000	0.000000	0.000000	0.000000	0.000000	JIB	0.166666666	19.999999	19.999999	0.000000	0.000000	0.000000	0.000000
MT261	25	101	120.000000	120.000000	3.000000	3.000000	0.000000	0.000000	0.000000	0.000000	JIB	0.166666666	19.999999	19.999999	0.000000	0.000000	0.000000	0.000000

Table 1

Partner Acreage Report

Tract Id	S/Cou	Sub-Tract Id	Gross Total		Gross Undev.		Gross Developed		Gross HBP		W.I. Deck Id	Working Int.	PARTNER SHARE		Gross HBP		
			Net Total	Net Undeveloped	Net Undeveloped	Net Developed	Net HBP	Net HBP	Gross Acres	Net Undev.			Gross Undev.	Net Dev.	Net HBP		
LEASE: BSO-139M - Carol Kirk, a married woman dealing in her sole an - T34N-R01E-07																	
Township 34 North, Range 1 East																	
Section 7: Lots 3(35.07), 4(35.17), S/2NE/4, E/2SW/4, SE/4																	
Township 34 North, Range 1 East																	
Section 8: S/2NW/4, SW/4NE/4																	
Township 34 North, Range 1 East																	
Section 18: NW/4NE/4, S/2NE/4																	
MT244	25	101	100	390.240000	390.240000	6.505300	6.505300	0.000000	0.000000	0.000000	JIB	0.166666666	65.039997	65.039997	1.084216	1.084216	0.000000
MT245	25	101	100	120.000000	120.000000	2.000400	2.000400	0.000000	0.000000	0.000000	JIB	0.166666666	19.999999	19.999999	0.333399	0.333399	0.000000
MT261	25	101	100	120.000000	120.000000	2.000400	2.000400	0.000000	0.000000	0.000000	JIB	0.166666666	19.999999	19.999999	0.333399	0.333399	0.000000
LEASE: BSO-142 - The Diocese of Winona, a corporation - T34N-R01E-18																	
Township 34 North, Range 1 East																	
Section 18: Lots 3(35.61), 4(35.76), E/2SW/4, SE/4																	
Township 34 North, Range 1 East																	
Section 18: Lots 3(35.61), 4(35.76), E/2SW/4, SE/4																	
Stewart 10-18																	
MT249	25	101	100	311.370000	311.370000	0.000000	0.000000	311.370000	311.370000	311.370000	JIB	0.166666666	51.894997	51.894997	25.947498	25.947498	51.894997
LEASE: BSO-142A - Samuel Lynn Stewart - T34N-R01E-18																	
Township 34 North, Range 1 East																	
Section 18: Lots 3(35.61), 4(35.76), E/2SW/4, SE/4																	
Township 34 North, Range 1 East																	
Section 18: Lots 3(35.61), 4(35.76), E/2SW/4, SE/4																	
Stewart 10-18																	
MT249	25	101	100	311.370000	311.370000	0.000000	0.000000	311.370000	311.370000	311.370000	JIB	0.166666666	51.894997	51.894997	12.973749	12.973749	51.894997
LEASE: BSO-142B - Vera Belle Stewart - T34N-R01E-18																	
Township 34 North, Range 1 East																	
Section 18: Lots 3(35.61), 4(35.76), E/2SW/4, SE/4																	
Township 34 North, Range 1 East																	
Section 18: Lots 3(35.61), 4(35.76), E/2SW/4, SE/4																	

Table 1

Partner Acreage Report

Tract Id	S/Cou	Sub-Tract Id	Gross Total		Gross Undev.		Gross Developed		Gross HBP		W.I. Deck Id	Working Int.	PARTNER SHARE		Gross HBP	
			Net Total	Net Undeveloped	Net Undeveloped	Net Developed	Net HBP	Net HBP	Gross Acres	Gross Undev.			Gross Dev.	Net Dev.		
Stewart 10-18	25	101	100	311.370000	0.000000	311.370000	0.000000	311.370000	311.370000	JIB	0.166666666	0.000000	51.894997	0.000000	51.894997	0.000000
MT249				77.842500	0.000000	77.842500	0.000000	77.842500	77.842500				12.973749	0.000000	12.973749	0.000000
LEASE: BSO-143 - Carol A. Locke, a woman dealing in her sole and se - T34N-R01E-17																
Township 34 North, Range 1 East																
Section 17: SE/4																
MT250	25	101	100	160.000000	160.000000	0.000000	0.000000	0.000000	0.000000	JIB	0.166666666	26.6666665	26.6666665	0.000000	0.000000	0.000000
				40.000000	40.000000	0.000000	0.000000	0.000000	0.000000				6.6666666	6.6666666	0.000000	0.000000
LEASE: BSO-143A - Donald H. Jenson Lease Extension effective 5/22/1 - T34N-R01E-17																
Township 34 North, Range 1 East																
Section 17: SE/4																
MT250	25	101	100	160.000000	160.000000	0.000000	0.000000	0.000000	0.000000	JIB	0.166666666	26.6666665	26.6666665	0.000000	0.000000	0.000000
				40.000000	40.000000	0.000000	0.000000	0.000000	0.000000				6.6666666	6.6666666	0.000000	0.000000
LEASE: BSO-143B - Cynthia P. Heffington, a married woman dealing in - T34N-R01E-17																
Township 34 North, Range 1 East																
Section 17: SE/4																
MT250	25	101	100	160.000000	160.000000	0.000000	0.000000	0.000000	0.000000	JIB	0.166666666	26.6666665	26.6666665	0.000000	0.000000	0.000000
				13.333332	13.333332	0.000000	0.000000	0.000000	0.000000				2.222222	2.222222	0.000000	0.000000
LEASE: BSO-143C - Virginia C. Wozniak Lease Extension Effective 8/1 - T34N-R01E-17																
Township 34 North, Range 1 East																
Section 17: SE/4																
MT250	25	101	100	160.000000	160.000000	0.000000	0.000000	0.000000	0.000000	JIB	0.166666666	26.6666665	26.6666665	0.000000	0.000000	0.000000
				13.333334	13.333334	0.000000	0.000000	0.000000	0.000000				2.222222	2.222222	0.000000	0.000000
LEASE: BSO-143D - Patricia A. Chambers, a single woman Extension of - T34N-R01E-17																
Township 34 North, Range 1 East																
Section 17: SE/4																
MT250	25	101	100	160.000000	160.000000	0.000000	0.000000	0.000000	0.000000	JIB	0.166666666	26.6666665	26.6666665	0.000000	0.000000	0.000000
				13.333332	13.333332	0.000000	0.000000	0.000000	0.000000				2.222222	2.222222	0.000000	0.000000

Table 1

Partner Acreage Report

Tract Id	S/Cou	Sub-Tract Id	Gross Total Net Total	Gross Undev. Net Undeveloped	Gross Developed Net Developed	Gross HBP Net HBP	W.I. Deck Id	Working Int.	PARTNER SHARE		Gross Dev. Net Dev.	Gross HBP Net HBP
									Gross Acres	Net Undev.		
LEASE: BSO-143E - Edgar J. Jenson - T34N-R01E-17												
Township 34 North, Range 1 East												
Section 17: SE/4												
MT250	25	101	100	160.000000 40.000000	0.000000 0.000000	0.000000 0.000000	JIB	0.16666666	26.666665 6.666666	26.666665 6.666666	0.000000 0.000000	0.000000 0.000000
LEASE: BSO-144 - Jay Johannsen and Beverly Johannsen, husband and w - T34N-R01E-22												
Township 34 North, Range 1 East												
Section 22: S/2												
MT251	25	101	100	320.000000 160.000000	0.000000 0.000000	0.000000 0.000000	JIB	0.16666666	53.333331 26.666665	53.333331 26.666665	0.000000 0.000000	0.000000 0.000000
LEASE: BSO-144A - Montex Petroleum Co., a Minnesota Corporation - T34N-R01E-21												
Township 34 North, Range 1 East												
Section 21: N/2NW/4, NE/4, N/2SE/4												
Township 34 North, Range 1 East												
Section 22: S/2												
MT251	25	101	100	320.000000 160.000000	0.000000 0.000000	0.000000 0.000000	JIB	0.16666666	53.333331 26.666665	53.333331 26.666665	0.000000 0.000000	0.000000 0.000000
MT265	25	101	100	320.000000 160.000000	0.000000 0.000000	0.000000 0.000000	JIB	0.16666666	53.333331 26.666665	53.333331 26.666665	0.000000 0.000000	0.000000 0.000000
LEASE: BSO-144B - Jane Frydenlund, a married woman - T34N-R01E-21												
Township 34 North, Range 1 East												
Section 21: N/2NW/4, NE/4, N/2SE/4												
MT259	25	101	100	320.000000 160.000000	0.000000 0.000000	0.000000 0.000000	JIB	0.16666666	53.333331 26.666665	53.333331 26.666665	0.000000 0.000000	0.000000 0.000000
LEASE: BSO-145 - Sigrid Grinde, a widow Lease Extension dated Effe - T34N-R01E-17												
Township 34 North, Range 1 East												
Section 17: N/2NE/4												

Table 1

Partner Acreage Report

Tract Id	SI/Cou	Sub-Tract Id	Gross Total		Gross Undev.		Gross Developed		Gross HBP		W.I. Deck Id	Working Int.	PARTNER SHARE		Gross Dev.		Gross HBP	
			Net Total	Net Undeveloped	Net Undeveloped	Net Developed	Net HBP	Net HBP	Gross Acres	Net Undev.			Net Dev.	Net HBP				
MT252	25	101 100	80,000,000	80,000,000	80,000,000	0,000,000	0,000,000	0,000,000	0,000,000	0,000,000	JIB	0.166666666	13,333,332	13,333,332	0,000,000	0,000,000	0,000,000	0,000,000
LEASE: BSO-146A - James W. Carey, a married man dealing in his sole - T34N-R01E-01																		
Township 34 North, Range 1 East																		
Section 12: NW/4																		
MT253	25	101 100	160,000,000	40,000,000	160,000,000	0,000,000	0,000,000	0,000,000	0,000,000	0,000,000	JIB	0.166666666	26,666,665	26,666,665	0,000,000	0,000,000	0,000,000	0,000,000
MT254	25	101 100	160,000,000	40,000,000	160,000,000	0,000,000	0,000,000	0,000,000	0,000,000	0,000,000	JIB	0.166666666	26,666,665	26,666,665	0,000,000	0,000,000	0,000,000	0,000,000
LEASE: BSO-147 - Alfred Thompson Lease Extension dated Effective 1 - T34N-R01E-23																		
MT255																		
Township 34 North, Range 1 East																		
Section 23: S/2																		
MT256																		
Township 34 North, Range 1 East																		
Section 27: N/2																		
MT257	25	101 100	320,000,000	65,072,000	320,000,000	0,000,000	0,000,000	0,000,000	0,000,000	0,000,000	JIB	0.166666666	53,333,331	53,333,331	0,000,000	0,000,000	0,000,000	0,000,000
MT255	25	101 100	65,072,000	65,072,000	65,072,000	0,000,000	0,000,000	0,000,000	0,000,000	0,000,000	JIB	0.166666666	10,845,332	10,845,332	0,000,000	0,000,000	0,000,000	0,000,000
MT256	25	101 100	320,000,000	65,072,000	320,000,000	0,000,000	0,000,000	0,000,000	0,000,000	0,000,000	JIB	0.166666666	53,333,331	53,333,331	0,000,000	0,000,000	0,000,000	0,000,000
MT257	25	101 100	320,000,000	65,072,000	320,000,000	0,000,000	0,000,000	0,000,000	0,000,000	0,000,000	JIB	0.166666666	53,333,331	53,333,331	0,000,000	0,000,000	0,000,000	0,000,000
LEASE: BSO-147B - Karen R. Thompson, a married woman dealing in her s - T34N-R01E-23																		
MT255																		

Table 1

Partner Acreage Report

Tract Id	S/Cou	Sub-Tract Id	Gross Total		Gross Undev.		Gross Developed		Gross HBP		Working Int.	PARTNER SHARE		Gross HBP		
			Net Total	Net Undeveloped	Net Undeveloped	Net Developed	Net HBP	Net HBP	Gross Acres	Net Undev.		Gross Acres	Net Dev.			
Township 34 North, Range 1 East																
Section 23: S/2																
MT256																
Township 34 North, Range 1 East																
Section 27: N/2																
MT257																
Township 34 North, Range 1 East																
Section 28: S/2																
MT255		25	101	100	320.000000	65.072000	0.000000	0.000000	0.000000	0.000000	0.16666666	53.333331	53.333331	0.000000	0.000000	
					65.072000	320.000000	0.000000	0.000000	0.000000	0.000000	0.16666666	10.845332	10.845332	0.000000	0.000000	
MT256		25	101	100	320.000000	65.072000	0.000000	0.000000	0.000000	0.000000	0.16666666	53.333331	53.333331	0.000000	0.000000	
					65.072000	320.000000	0.000000	0.000000	0.000000	0.000000	0.16666666	10.845332	10.845332	0.000000	0.000000	
MT257		25	101	100	320.000000	65.072000	0.000000	0.000000	0.000000	0.000000	0.16666666	53.333331	53.333331	0.000000	0.000000	
					65.072000	320.000000	0.000000	0.000000	0.000000	0.000000	0.16666666	10.845332	10.845332	0.000000	0.000000	
LEASE: BSO-147C - Anders Thompson - T34N-R01E-23																
MT255																
Township 34 North, Range 1 East																
Section 23: S/2																
MT256																
Township 34 North, Range 1 East																
Section 27: N/2																
MT257																
Township 34 North, Range 1 East																
Section 28: S/2																
MT255		25	101	100	320.000000	59.712000	0.000000	0.000000	0.000000	0.000000	0.16666666	53.333331	53.333331	0.000000	0.000000	
					59.712000	320.000000	0.000000	0.000000	0.000000	0.000000	0.16666666	9.951999	9.951999	0.000000	0.000000	
MT256		25	101	100	320.000000	59.712000	0.000000	0.000000	0.000000	0.000000	0.16666666	53.333331	53.333331	0.000000	0.000000	
					59.712000	320.000000	0.000000	0.000000	0.000000	0.000000	0.16666666	9.951999	9.951999	0.000000	0.000000	
MT257		25	101	100	320.000000	59.712000	0.000000	0.000000	0.000000	0.000000	0.16666666	53.333331	53.333331	0.000000	0.000000	
					59.712000	320.000000	0.000000	0.000000	0.000000	0.000000	0.16666666	9.951999	9.951999	0.000000	0.000000	

Table 1

Partner Acreage Report

Tract Id	SV/Cou	Sub-Tract Id	Gross Total		Gross Undev.		Gross Developed		Gross HBP		Working Int.	PARTNER SHARE		Gross HBP		
			Net Total	Net Undeveloped	Net Undeveloped	Net Developed	Net HBP	Net HBP	Gross Acres	Net Undev.		Gross Undev.	Net Dev.	Net HBP		
LEASE: BSO-147D - Ingrid Thompson - T34N-R01E-23																
MT255																
Township 34 North, Range 1 East																
Section 23: S/2																
MT256																
Township 34 North, Range 1 East																
Section 27: N/2																
MT257																
Township 34 North, Range 1 East																
Section 28: S/2																
MT255		25	101	100	320.000000	320.000000	0.000000	0.000000	0.000000	JIB	0.166666666	53.3333331	53.3333331	0.000000	0.000000	
					65.072000	65.072000	0.000000	0.000000	0.000000			10.845332	10.845332	0.000000	0.000000	
MT256		25	101	100	320.000000	320.000000	0.000000	0.000000	0.000000	JIB	0.166666666	53.3333331	53.3333331	0.000000	0.000000	
					65.072000	65.072000	0.000000	0.000000	0.000000			10.845332	10.845332	0.000000	0.000000	
MT257		25	101	100	320.000000	320.000000	0.000000	0.000000	0.000000	JIB	0.166666666	53.3333331	53.3333331	0.000000	0.000000	
					65.072000	65.072000	0.000000	0.000000	0.000000			10.845332	10.845332	0.000000	0.000000	
LEASE: BSO-148 - Linda R. Porter and Barney G. Porter, wife and hus - T34N-R01E-13																
Township 34 North, Range 1 East																
Section 13: NE/4																
MT258		25	101	100	160.000000	160.000000	0.000000	0.000000	0.000000	JIB	0.166666666	26.6666665	26.6666665	0.000000	0.000000	
					26.666672	26.666672	0.000000	0.000000	0.000000			4.444445	4.444445	0.000000	0.000000	
LEASE: BSO-148A - Robert F. Sahli and Kathryn G. Sahli, husband and w - T34N-R01E-13																
Township 34 North, Range 1 East																
Section 13: NE/4																
MT258		25	101	100	160.000000	160.000000	0.000000	0.000000	0.000000	JIB	0.166666666	26.6666665	26.6666665	0.000000	0.000000	
					26.666672	26.666672	0.000000	0.000000	0.000000			4.444445	4.444445	0.000000	0.000000	
LEASE: BSO-150 - Shelly Lyn Krieger, a woman dealing in her sole an - T34N-R01E-09																
Township 34 North, Range 1 East																
Section 9: SW/4SE/4, SW/4SW/4																

Table 1

Partner Acreage Report

Tract Id	S/Cou	Sub-Tract Id	Gross Total Net Total	Gross Undev. Net Undeveloped	Gross Developed Net Developed	Gross HBP Net HBP	W.I. Deck Id	Working Int.	PARTNER SHARE		Gross Dev. Net Dev.	Gross HBP Net HBP
									Gross Acres Net Acres	Gross Undev. Net Undev.		
MT260	25	101 100	80.000000 80.000000	80.000000 80.000000	0.000000 0.000000	0.000000 0.000000	JIB	0.16666666	13.333332 13.333332	13.333332 13.333332	0.000000 0.000000	0.000000 0.000000
LEASE: BSO-153 - Beverly Jo Rooney, a widow - T34N-R01E-14												
Township 34 North, Rang 1 East												
Section 14: NW/4												
MT262	25	101 100	160.000000 17.777777	160.000000 17.777777	0.000000 0.000000	0.000000 0.000000	JIB	0.16666666	26.666665 2.962962	26.666665 2.962962	0.000000 0.000000	0.000000 0.000000
LEASE: BSO-154 - Pamela A. Bruner, a woman dealing in her sole and s - T34N-R01E-21												
Township 34 North, Range 1 East												
Section 21: SW/4, S/2SE/4, S/2NW/4												
MT263	25	101 100	320.000000 53.344000	320.000000 53.344000	0.000000 0.000000	0.000000 0.000000	JIB	0.16666666	53.333331 8.890666	53.333331 8.890666	0.000000 0.000000	0.000000 0.000000
LEASE: BSO-154A - Stephanie Goode, a married woman dealing in her so - T34N-R01E-21												
Township 34 North, Range 1 East												
Section 21: SW/4, S/2SE/4, S/2NW/4												
MT263	25	101 100	320.000000 53.344000	320.000000 53.344000	0.000000 0.000000	0.000000 0.000000	JIB	0.16666666	53.333331 8.890666	53.333331 8.890666	0.000000 0.000000	0.000000 0.000000
LEASE: BSO-154B - Shirley Hoey - T34N-R01E-21												
Township 34 North, Range 1 East												
Section 21: SW/4, S/2SE/4, S/2NW/4												
MT263	25	101 100	320.000000 53.344000	320.000000 53.344000	0.000000 0.000000	0.000000 0.000000	JIB	0.16666666	53.333331 8.890666	53.333331 8.890666	0.000000 0.000000	0.000000 0.000000
LEASE: BSO-154C - Gail Nolan, a married woman dealing in her sole an - T34N-R01E-21												
Township 34 North, Range 1 East												
Section 21: SW/4, S/2SE/4, S/2NW/4												
MT263	25	101 100	320.000000 53.312000	320.000000 53.312000	0.000000 0.000000	0.000000 0.000000	JIB	0.16666666	53.333331 8.885332	53.333331 8.885332	0.000000 0.000000	0.000000 0.000000

Table 1

Partner Acreage Report

Tract Id	S/Cou	Sub-Tract Id	Gross Total Net Total	Gross Undev. Net Undeveloped	Gross Developed Net Developed	Gross HBP Net HBP	W.I. Deck Id	Working Int.	PARTNER SHARE		Gross Dev. Net Dev.	Gross HBP Net HBP
									Gross Acres Net Acres	Gross Undev. Net Undev.		
LEASE: BSO-154D - Arlene Richards, a married woman dealing in her so - T34N-R01E-21												
Township 34 North, Range 1 East												
Section 21: SW/4, S/2SE/4, S/2NW/4												
MT263	25	101	100	320.000000 53.312000	0.000000 0.000000	0.000000 0.000000	JIB	0.16666666	53.333331 8.885332	53.333331 8.885332	0.000000 0.000000	0.000000 0.000000
LEASE: BSO-154E - M. Kay Dayton, a woman dealing in her sole and sepa - T34N-R01E-21												
Township 34 North, Range 1 East												
Section 21: SW/4, S/2SE/4, S/2NW/4												
MT263	25	101	100	320.000000 53.344000	0.000000 0.000000	0.000000 0.000000	JIB	0.16666666	53.333331 8.890666	53.333331 8.890666	0.000000 0.000000	0.000000 0.000000
LEASE: BSO-155 - Thomas Alan Beck, a married man dealing in his sole - T34N-R01E-27												
Township 34 North, Range 1 East												
Section 27: S/2												
MT264	25	101	100	320.000000 26.666665	0.000000 0.000000	0.000000 0.000000	JIB	0.16666666	53.333331 4.444444	53.333331 4.444444	0.000000 0.000000	0.000000 0.000000
LEASE: BSO-155A - Pamela K. Miles - T34N-R01E-27												
Township 34 North, Range 1 East												
Section 27: S/2												
MT264	25	101	100	320.000000 26.666665	0.000000 0.000000	0.000000 0.000000	JIB	0.16666666	53.333331 4.444444	53.333331 4.444444	0.000000 0.000000	0.000000 0.000000
LEASE: BSO-155B - V. Carol Sundstrom - T34N-R01E-27												
Township 34 North, Range 1 East												
Section 27: S/2												
MT264	25	101	100	320.000000 26.666665	0.000000 0.000000	0.000000 0.000000	JIB	0.16666666	53.333331 4.444444	53.333331 4.444444	0.000000 0.000000	0.000000 0.000000
LEASE: BSO-155C - V. Joan Beck and Robert E. Beck, wife and husband - T34N-R01E-27												
Township 34 North, Range 1 East												
Section 27: S/2												

Table 1

Partner Acreage Report

Tract Id	SU/Cou	Sub-Tract Id	Gross Total		Gross Undev.		Gross Developed		Gross HBP		W.I. Deck Id	Working Int.	PARTNER SHARE		Gross Dev.		Gross HBP	
			Net Total	Net Undeveloped	Net Undeveloped	Net Developed	Net HBP	Net HBP	Gross Acres	Net Undev.			Gross Undev.	Net Dev.	Gross HBP	Net HBP		
MT264	25	101	100	320.000000	320.000000	26.666665	0.000000	0.000000	0.000000	0.000000	JIB	0.16666666	53.333331	4.444444	0.000000	0.000000	0.000000	0.000000
LEASE: BSO-155D - William G. Schurter, Attorney-in-Fact for Vera E. - T34N-R01E-27																		
Township 34 North, Range 1 East																		
Section 27: S/2																		
MT264	25	101	100	320.000000	320.000000	26.666665	0.000000	0.000000	0.000000	0.000000	JIB	0.16666666	53.333331	4.444444	0.000000	0.000000	0.000000	0.000000
LEASE: BSO-157 - Johansen Farms Inc., a Montana Corporation - T34N-R01E-28																		
Township 34 North, Range 1 East																		
Section 28: N/2																		
MT267	25	101	100	320.000000	320.000000	320.000000	0.000000	0.000000	0.000000	0.000000	JIB	0.16666666	53.333331	53.333331	0.000000	0.000000	0.000000	0.000000
LEASE: BSO-158 - Sister Patricia Johansen - T34N-R01E-33																		
Township 34 North, Range 1 East																		
Section 33: SW/4																		
MT268	25	101	100	160.000000	160.000000	160.000000	0.000000	0.000000	0.000000	0.000000	JIB	0.16666666	26.666665	26.666665	0.000000	0.000000	0.000000	0.000000
LEASE: BSO-159 - Sharon Dolan, F/K/A Sharon Gipe - T34N-R01E-33																		
Township 34 North, Range 1 East																		
Section 33: NW/4																		
MT269	25	101	100	160.000000	160.000000	160.000000	0.000000	0.000000	0.000000	0.000000	JIB	0.16666666	26.666665	26.666665	0.000000	0.000000	0.000000	0.000000
LEASE: BSO-160 - James R. Midboe and Shirlee J. Midboe, husband and - T34N-R01E-02																		
Township 34 North, Range 1 East																		
Section 2: Lots (39.41), 2(39.52), 3(39.62), 4(39.73), SE/4NE/4, SW/4NW/4, W/2SW/4																		
Township 34 North, Range 1 East																		
Section 3: Lots 1(39.79), 2(39.83), 3(39.85), 4(39.89)																		
Township 35 North, Range 1 East																		

Table 1

Partner Acreage Report

Tract Id	SVCou	Sub-Tract Id	Gross Total Net Total	Gross Undev. Net Undeveloped	Gross Developed Net Developed	Gross HBP Net HBP	W.I. Deck Id	Working Int.	Gross Acres Net Acres	PARTNER SHARE		Gross Dev. Net Dev.	Gross HBP Net HBP
										Gross Undev.	Net Undev.		
Section 35: SW/4NW/4, W/2SW/4, SE/4SW/4													
MT270	25	101	318.280000 302.366000	318.280000 302.366000	0.000000 0.000000	0.000000 0.000000	JIB	0.166666666	53.046664 50.394331	53.046664 50.394331	0.000000 0.000000	0.000000 0.000000	0.000000 0.000000
MT271	25	101	159.360000 151.392000	159.360000 151.392000	0.000000 0.000000	0.000000 0.000000	JIB	0.166666666	26.559998 25.231998	26.559998 25.231998	0.000000 0.000000	0.000000 0.000000	0.000000 0.000000
MT272	25	101	160.000000 152.000000	160.000000 152.000000	0.000000 0.000000	0.000000 0.000000	JIB	0.166666666	26.666665 25.333332	26.666665 25.333332	0.000000 0.000000	0.000000 0.000000	0.000000 0.000000
LEASE: BSO-161 - Henry E. McDermott - T34N-R01E-12													
Township 34 North, Range 1 East													
Section 12: S/2													
MT273	25	101	320.000000 240.000000	320.000000 240.000000	0.000000 0.000000	0.000000 0.000000	JIB	0.166666666	53.333331 39.999998	53.333331 39.999998	0.000000 0.000000	0.000000 0.000000	0.000000 0.000000
LEASE: BSO-162 - Valerie Wadman, as Personal Representative of the - T34N-R01E-31													
Township 34 North, Range 1 East													
Section 31: Lots 1(36.88), 2(36.98), E/2NW/4, NE/4													
MT274	25	101	313.860000 156.930000	313.860000 156.930000	0.000000 0.000000	0.000000 0.000000	JIB	0.166666666	52.309997 26.154998	52.309997 26.154998	0.000000 0.000000	0.000000 0.000000	0.000000 0.000000
LEASE: BSO-163 - Paul D. Turner - T34N-R01E-09													
Township 34 North, Range 1 East													
Section 9: SE/4SW/4, NE/4SE/4													
MT275	25	101	80.000000 80.000000	80.000000 80.000000	0.000000 0.000000	0.000000 0.000000	JIB	0.166666666	13.333332 13.333332	13.333332 13.333332	0.000000 0.000000	0.000000 0.000000	0.000000 0.000000
LEASE: BSO-164 - Susan Rae Payne - T34N-R01E-04													
Township 34 North, Range 1 East													
Section 4: E/2SW/4, Lot 1(39.82), SE/4NE/4, W/2SW/4													
Township 34 North, Range 1 East													
Section 9: N/2NW/4, N/2NE/4													
Township 35 North, Range 1 East													

Table 1

Partner Acreage Report

Tract Id	S/MCou	Sub-Tract Id	Gross Total Net	Gross Undev. Net Undeveloped	Gross Developed Net Developed	Gross HBP Net HBP	W.I. Deck Id	Working Int.	PARTNER SHARE		Gross Dev. Net Dev.	Gross HBP Net HBP
									Gross Acres Net Acres	Gross Undev. Net Undev.		
Section 33: E/2												
MT276	25	101	100	239.820000 79.939920	0.000000 0.000000	0.000000 0.000000	JIB	0.166666666	39.969998 13.323319	39.969998 13.323319	0.000000 0.000000	0.000000 0.000000
MT277	25	101	100	160.000000 53.333280	0.000000 0.000000	0.000000 0.000000	JIB	0.166666666	26.666665 8.888879	26.666665 8.888879	0.000000 0.000000	0.000000 0.000000
MT278	25	101	100	320.000000 106.666560	0.000000 0.000000	0.000000 0.000000	JIB	0.166666666	53.333331 17.777759	53.333331 17.777759	0.000000 0.000000	0.000000 0.000000
LEASE: BSO-164A - Kristy Lee Whitsitt - T34N-R01E-04												
Township 34 North, Range 1 East												
Section 4: E/2SW/4, Lot 1(39.82), SE/4NE/4, W/2SW/4												
Township 34 North, Range 1 East												
Section 9: N/2NW/4, N/2NE/4												
Township 35 North, Range 1 East												
Section 33: E/2												
MT276	25	101	100	239.820000 79.939920	0.000000 0.000000	0.000000 0.000000	JIB	0.166666666	39.969998 13.323319	39.969998 13.323319	0.000000 0.000000	0.000000 0.000000
MT277	25	101	100	160.000000 53.333280	0.000000 0.000000	0.000000 0.000000	JIB	0.166666666	26.666665 8.888879	26.666665 8.888879	0.000000 0.000000	0.000000 0.000000
MT278	25	101	100	320.000000 106.666560	0.000000 0.000000	0.000000 0.000000	JIB	0.166666666	53.333331 17.777759	53.333331 17.777759	0.000000 0.000000	0.000000 0.000000
LEASE: BSO-165 - Minnesota Resources, Inc. - T34N-R01E-08												
Township 34 North, Range 1 East												
Section 8: SW/4												
Township 34 North, Range 1 East												
Section 17: NW/4												
MT279	25	101	100	160.000000 160.000000	0.000000 0.000000	0.000000 0.000000	JIB	0.166666666	26.666665 26.666665	26.666665 26.666665	0.000000 0.000000	0.000000 0.000000
MT280	25	101	100	160.000000 160.000000	0.000000 0.000000	0.000000 0.000000	JIB	0.166666666	26.666665 26.666665	26.666665 26.666665	0.000000 0.000000	0.000000 0.000000

Table 1

Partner Acreage Report

Tract Id	SVCou	Sub-Tract Id	Gross Total		Gross Undev.		Gross Developed		Gross HBP		W.I. Deck Id	Working Int.	PARTNER SHARE		Gross HBP			
			Net Total	Net Undeveloped	Net Undeveloped	Net Developed	Net HBP	Net HBP	Gross Acres	Net Undev.			Gross Dev.	Net Dev.				
LEASE: BSO-167 - Northwest Farm Credit Services FLCA #10-0270 - T34N-R01E-34																		
Township 34 North, Range 1 East																		
Section 34: E/2																		
MT281	25	101	100	320.000000	160.000000	320.000000	160.000000	0.000000	0.000000	0.000000	JIB	0.16666666	53.333331	26.666665	53.333331	26.666665	0.000000	0.000000
LEASE: BSO-168 - Gail J. O'Brien - T34N-R01E-03																		
Township 34 North, Range 1 East																		
Section 3: S/2N/2, SE/4																		
MT282	25	101	100	320.000000	320.000000	320.000000	320.000000	0.000000	0.000000	0.000000	JIB	0.16666666	53.333331	53.333331	53.333331	53.333331	0.000000	0.000000
LEASE: BSO-169 - Jay Johannsen and Beverly Johannsen, husband and w - T34N-R01E-19																		
Township 34 North, Range 1 East																		
Section 19: E/2 less and except a 3 acre tract of land located in the NE/4NE/4 of Said Section 19 and more particularly described in Book 1 Deeds, Page 409 of the Records of Toole County, Montana																		
Johannsen 1-19				317.000000	0.000000	317.000000	0.000000	0.000000	0.000000	0.000000	JIB	0.16666666	52.833331	0.000000	52.833331	0.000000	52.833331	52.833331
MT283	25	101	200	317.000000	317.000000	317.000000	317.000000	0.000000	0.000000	0.000000	JIB	0.16666666	52.833331	52.833331	52.833331	52.833331	52.833331	52.833331
LEASE: BSO-171 - Black Stone Minerals Company, L.P. - T34N-R01E-02																		
Township 34 North, Range 1 East																		
Section 2: SE/4, SW/4NE/4, E/2SW/4																		
MT286	25	101	100	280.000000	280.000000	280.000000	280.000000	0.000000	0.000000	0.000000	JIB	0.16666666	46.666664	46.666664	46.666664	46.666664	0.000000	0.000000
LEASE: BSO-172 - Kenneth A. Flasketud, as successor in interest to - T34N-R01E-20																		
Township 34 North, Range 1 East																		
Section 20: NE/4																		
MT287	25	101	100	160.000000	8.000000	160.000000	8.000000	0.000000	0.000000	0.000000	JIB	0.16666666	26.666665	1.333333	26.666665	1.333333	0.000000	0.000000
LEASE: BSO-172A - Thomas Flasketud, as successor in interest to W.H. - T34N-R01E-20																		
Township 34 North, Range 1 East																		

Table 1

Partner Acreage Report

Tract Id	SW/Cow	Sub-Tract Id	Gross Total Net Total	Gross Undev. Net Undeveloped	Gross Developed Net Developed	Gross HBP Net HBP	W.I. Deck Id	Working Int.	PARTNER SHARE		Gross Dev. Net Dev.	Gross HBP Net HBP
									Gross Acres Net Acres	Gross Undev. Net Undev.		
Section 20: NE/4												
MT287	25	101 100	160.000000 8.000000	160.000000 8.000000	0.000000 0.000000	0.000000 0.000000	JIB	0.166666666	26.666665 1.333333	26.666665 1.333333	0.000000 0.000000	0.000000 0.000000
LEASE: BSO-172B - Paul Creeden, as successor in interest to Kathryn - T34N-R01E-20												
Township 34 North, Range 1 East												
Section 20: NE/4												
MT287	25	101 100	160.000000 20.000000	160.000000 20.000000	0.000000 0.000000	0.000000 0.000000	JIB	0.166666666	26.666665 3.333333	26.666665 3.333333	0.000000 0.000000	0.000000 0.000000
LEASE: BSO-172C - Miriam Langum, as successor in interest to W.H. Fl - T34N-R01E-20												
Township 34 North, Range 1 East												
Section 20: NE/4												
MT287	25	101 100	160.000000 8.000000	160.000000 8.000000	0.000000 0.000000	0.000000 0.000000	JIB	0.166666666	26.666665 1.333333	26.666665 1.333333	0.000000 0.000000	0.000000 0.000000
LEASE: BSO-172D - William Creeden, as successor in interest to Kathr - T34N-R01E-20												
Township 34 North, Range 1 East												
Section 20: NE/4												
MT287	25	101 100	160.000000 20.000000	160.000000 20.000000	0.000000 0.000000	0.000000 0.000000	JIB	0.166666666	26.666665 3.333333	26.666665 3.333333	0.000000 0.000000	0.000000 0.000000
LEASE: BSO-172E - David J. Meland, aka David Meland, successor in in - T34N-R01E-20												
Township 34 North, Range 1 East												
Section 20: NE/4												
MT287	25	101 100	160.000000 20.000000	160.000000 20.000000	0.000000 0.000000	0.000000 0.000000	JIB	0.166666666	26.666665 3.333333	26.666665 3.333333	0.000000 0.000000	0.000000 0.000000
LEASE: BSO-172F - Christine Jo Leif, a married woman dealing in her - T34N-R01E-20												
Township 34 North, Range 1 East												
Section 20: NE/4												
MT287	25	101 100	160.000000 20.000000	160.000000 20.000000	0.000000 0.000000	0.000000 0.000000	JIB	0.166666666	26.666665 3.333333	26.666665 3.333333	0.000000 0.000000	0.000000 0.000000

Table 1

Partner Acreage Report

Tract Id	SW/Cou	Sub-Tract Id	Gross Total		Gross Undev.		Gross Developed		Gross HBP		Working Int.	PARTNER SHARE		Gross Dev.		Gross HBP		
			Net Total	Net Undeveloped	Net Undeveloped	Net Developed	Net HBP	Net HBP	W.I. Deck Id	Gross Acres		Net Undev.	Gross Undev.	Net Dev.	Net HBP	Net HBP		
LEASE: BSO-172G - Margaret Jastler, successor in interest to Henry Fl - T34N-R01E-20																		
Township 34 North, Range 1 East																		
Section 20: NE/4																		
MT287	25	101	100	160.000000	160.000000	40.000000	0.000000	0.000000	0.000000	0.000000	JIB	0.166666666	26.666665	26.666665	0.000000	0.000000	0.000000	0.000000
				40.000000	40.000000		0.000000	0.000000	0.000000				6.666666	6.666666	0.000000	0.000000	0.000000	0.000000
LEASE: BSO-172H - Paul Flaskerud, successor in interest to W.H. Flask - T34N-R01E-20																		
Township 34 North, Range 1 East																		
Section 20: NE/4																		
MT287	25	101	100	160.000000	160.000000	8.000000	0.000000	0.000000	0.000000	0.000000	JIB	0.166666666	26.666665	26.666665	0.000000	0.000000	0.000000	0.000000
				8.000000	8.000000		0.000000	0.000000	0.000000				1.333333	1.333333	0.000000	0.000000	0.000000	0.000000
LEASE: BSO-173 - Montex Petroleum Co., a Minnesota Corporation - T34N-R01E-10																		
Township 34 North, Range 1 East																		
Section 10: SW/4																		
Township 34 North, Range 1 East																		
Section 17: SW/4																		
Township 34 North, Range 1 East																		
Section 20: W/2, SE/4																		
MT288	25	101	100	160.000000	160.000000	0.000000	0.000000	0.000000	0.000000	0.000000	JIB	0.166666666	26.666665	26.666665	0.000000	0.000000	0.000000	0.000000
				160.000000	160.000000		0.000000	0.000000	0.000000				26.666665	26.666665	0.000000	0.000000	0.000000	0.000000
MT289	25	101	100	160.000000	160.000000	0.000000	0.000000	0.000000	0.000000	0.000000	JIB	0.166666666	26.666665	26.666665	0.000000	0.000000	0.000000	0.000000
				160.000000	160.000000		0.000000	0.000000	0.000000				26.666665	26.666665	0.000000	0.000000	0.000000	0.000000
MT290	25	101	100	480.000000	480.000000	0.000000	0.000000	0.000000	0.000000	0.000000	JIB	0.166666666	79.999996	79.999996	0.000000	0.000000	0.000000	0.000000
				480.000000	480.000000		0.000000	0.000000	0.000000				79.999996	79.999996	0.000000	0.000000	0.000000	0.000000
LEASE: BSO-174 - Howard N. Grinde and Donna G. Grinde, husband and - T35N-R01E-28																		
Township 35 North, Range 1 East																		
Section 28: S/2																		
Township 35 North, Range 1 East																		
Section 29: SE/4																		

Table 1

Partner Acreage Report

Tract Id	S/Cou	Sub-Tract Id	Gross Total Net Total	Gross Undev. Net Undeveloped	Gross Developed Net Developed	Gross HBP Net HBP	W.I. Deck Id	Working Int.	Gross Acres Net Acres	PARTNER SHARE		Gross Dev. Net Dev.	Gross HBP Net HBP
										Gross Undev. Net Undev.	Gross Undev. Net Undev.		
MT291	25	101 100	320.000000 80.000000	320.000000 80.000000	0.000000 0.000000	0.000000 0.000000	JIB	0.16666666	53.333331 13.333332	53.333331 13.333332	0.000000 0.000000	0.000000 0.000000	
MT292	25	101 100	160.000000 146.000000	160.000000 146.000000	0.000000 0.000000	0.000000 0.000000	JIB	0.16666666	26.666665 24.333332	26.666665 24.333332	0.000000 0.000000	0.000000 0.000000	
LEASE: BSO-174A - James A. Grinde and Joyce Grinde, husband and wife - T35N-R01E-28 Township 35 North, Range 1 East Section 28: S/2													
MT358	25	101 100	320.000000 80.000000	320.000000 80.000000	0.000000 0.000000	0.000000 0.000000	JIB	0.16666666	53.333331 13.333332	53.333331 13.333332	0.000000 0.000000	0.000000 0.000000	
MT359	25	101 100	160.000000 156.000000	160.000000 156.000000	0.000000 0.000000	0.000000 0.000000	JIB	0.16666666	26.666665 25.995998	26.666665 25.995998	0.000000 0.000000	0.000000 0.000000	
LEASE: BSO-177 - Kathy Marie Van Bemmel - T34N-R01E-29 Township 34 North, Range 1 East Section 29: S/2													
MT294	25	101 100	320.000000 40.000000	320.000000 40.000000	0.000000 0.000000	0.000000 0.000000	JIB	0.16666666	53.333331 6.666666	53.333331 6.666666	0.000000 0.000000	0.000000 0.000000	
LEASE: BSO-177A - Barbara Jean Penny, f/k/a Barbara Jean Van Bemmel - T34N-R01E-29 Township 34 North, Range 1 East Section 29: S/2													
MT294	25	101 100	320.000000 40.000000	320.000000 40.000000	0.000000 0.000000	0.000000 0.000000	JIB	0.16666666	53.333331 6.666666	53.333331 6.666666	0.000000 0.000000	0.000000 0.000000	
LEASE: BSO-177B - Debbie Sue Peterson, f/k/a Debbie Sue Van Bemmel - T34N-R01E-29 Township 34 North, Range 1 East Section 29: S/2													
MT294	25	101 100	320.000000 40.000000	320.000000 40.000000	0.000000 0.000000	0.000000 0.000000	JIB	0.16666666	53.333331 6.666666	53.333331 6.666666	0.000000 0.000000	0.000000 0.000000	

Table 1

Partner Acreage Report

Tract Id	S/U Cou	Sub-Tract Id	Gross Total Net Total	Gross Undev. Net Undeveloped	Gross Developed Net Developed	Gross HBP Net HBP	W.I. Deck Id	Working Int.	P A R T N E R S H A R E		Gross Dev. Net Dev.	Gross HBP Net HBP
									Gross Acres Net Acres	Gross Undev. Net Undev.		
LEASE: BSO-177C - Ida K. Waters aka/Ida Waters - T34N-R01E-29												
Township 34 North, Range 1 East												
Section 28: S/2												
MT294	25	101	320.000000 160.000000	320.000000 160.000000	0.000000 0.000000	0.000000 0.000000	JIB	0.166666666	53.3333331 26.6666665	53.3333331 26.6666665	0.000000 0.000000	0.000000 0.000000
LEASE: BSO-178 - Nimrod Inc., a Montana Corporation - T34N-R01W-03												
Township 34 North, Range 1 West												
Section 3: Lots 2(40.00), SW/4NE/4												
MT314	25	101	80.000000 16.000000	80.000000 16.000000	0.000000 0.000000	0.000000 0.000000	JIB	0.166666666	13.3333332 2.6666666	13.3333332 2.6666666	0.000000 0.000000	0.000000 0.000000
LEASE: BSO-179 - Montana State of No. OG-35801-05 - T34N-R01W-36												
Township 34 North, Range 1 West												
Section 36: N/2NE/4, N/2SE4NW/4, S/2S/2, NW/4SW/4, E/2NE/4SW/4												
Below the Base of the Nisku Formation												
MT315	25	101	320.000000 320.000000	320.000000 320.000000	0.000000 0.000000	0.000000 0.000000	JIB	0.083333334	26.6666668 26.6666668	26.6666668 26.6666668	0.000000 0.000000	0.000000 0.000000
LEASE: BSO-182 - Robert A. Tomshack and Ethel J. Tomshack, individ - T35N-R01E-05												
Township 35 North, Range 1 East												
Section 5: Lots 1(39.40), 2(39.16), S/2NE/4, SE/4, N/2SW/4, SE/4SW/4												
MT323	25	101	438.560000 438.560000	438.560000 438.560000	0.000000 0.000000	0.000000 0.000000	JIB	0.166666666	73.0933330 73.0933330	73.0933330 73.0933330	0.000000 0.000000	0.000000 0.000000
LEASE: BSO-183 - Northwest Farm Credit Services FLCA #05-0351 - T35N-R01E-13												
Township 35 North, Range 1 East												
Section 13: W/2												
Bulky 12-13												
MT324	25	101	320.000000 160.000000	320.000000 160.000000	0.000000 0.000000	320.000000 160.000000	JIB	0.050000000	16.0000000 8.0000000	16.0000000 8.0000000	0.000000 0.000000	16.000000 8.000000

Table 1

Partner Acreage Report

Tract Id	St/Cou	Sub-Tract Id	Gross Total		Gross Undev.		Gross Developed		Gross HBP		W.I. Deck Id	Working Int.	PARTNER SHARE		Gross Dev.		Gross HBP	
			Net Total	Net Undeveloped	Net Undeveloped	Net Developed	Net HBP	Net Undev.	Net Dev.	Net Undev.			Net HBP					
MT337	25	101	100	80.000000	80.000000	0.000000	0.000000	0.000000	0.000000	0.000000	JIB	0.16666666	13.333332	13.333332	0.000000	0.000000	0.000000	0.000000
				6.666666	6.666666	0.000000	0.000000	0.000000	0.000000	0.000000			1.111111	1.111111	0.000000	0.000000	0.000000	0.000000
MT341	25	101	100	320.000000	320.000000	0.000000	0.000000	0.000000	0.000000	0.000000	JIB	0.16666666	53.333331	53.333331	0.000000	0.000000	0.000000	0.000000
				26.666665	26.666665	0.000000	0.000000	0.000000	0.000000	0.000000			4.444444	4.444444	0.000000	0.000000	0.000000	0.000000
LEASE: BSO-187C - James A. Grinde and Joyce Grinde, husband and wife - T35N-R01E-19																		
Township 35 North, Range 1 East																		
Section 19: E/2NE/4																		
Township 35 North, Range 1 East																		
Section 20: N/2																		
MT337	25	101	100	80.000000	80.000000	0.000000	0.000000	0.000000	0.000000	0.000000	JIB	0.16666666	13.333332	13.333332	0.000000	0.000000	0.000000	0.000000
				53.333333	53.333333	0.000000	0.000000	0.000000	0.000000	0.000000			8.888888	8.888888	0.000000	0.000000	0.000000	0.000000
MT341	25	101	100	320.000000	320.000000	0.000000	0.000000	0.000000	0.000000	0.000000	JIB	0.16666666	53.333331	53.333331	0.000000	0.000000	0.000000	0.000000
				213.333334	213.333334	0.000000	0.000000	0.000000	0.000000	0.000000			35.555554	35.555554	0.000000	0.000000	0.000000	0.000000
LEASE: BSO-188 - Roberta Janning, a married woman dealing in sole a - T35N-R01E-18																		
Township 35 North, Range 1 East																		
Section 18: Lots 3(34.01), 4(34.11)																		
Township 35 North, Range 1 East																		
Section 19: Lot 1(34.26), W/2NE/4, NE/4NW/4																		
MT334	25	101	100	68.120000	68.120000	0.000000	0.000000	0.000000	0.000000	0.000000	JIB	0.16666666	11.353332	11.353332	0.000000	0.000000	0.000000	0.000000
				34.060000	34.060000	0.000000	0.000000	0.000000	0.000000	0.000000			5.676666	5.676666	0.000000	0.000000	0.000000	0.000000
MT335	25	101	100	154.260000	154.260000	0.000000	0.000000	0.000000	0.000000	0.000000	JIB	0.16666666	25.709998	25.709998	0.000000	0.000000	0.000000	0.000000
				77.130000	77.130000	0.000000	0.000000	0.000000	0.000000	0.000000			12.854999	12.854999	0.000000	0.000000	0.000000	0.000000
LEASE: BSO-188A - Mary Ann Applegarth, a widow Extension of Oil and - T35N-R01E-18																		
Township 35 North, Range 1 East																		
Section 18: Lots 3(34.01), 4(34.11)																		
Township 35 North, Range 1 East																		
Section 19: Lot 1(34.26), W/2NE/4, NE/4NW/4																		
MT334	25	101	100	68.120000	68.120000	0.000000	0.000000	0.000000	0.000000	0.000000	JIB	0.16666666	11.353332	11.353332	0.000000	0.000000	0.000000	0.000000
				34.060000	34.060000	0.000000	0.000000	0.000000	0.000000	0.000000			5.676666	5.676666	0.000000	0.000000	0.000000	0.000000

Table 1

Partner Acreage Report

Tract Id	SI/Cou	Sub-Tract Id	Gross Total Net Total	Gross Undev. Net Undeveloped	Gross Developed Net Developed	Gross HBP Net HBP	W.I. Deck Id	Working Int.	PARTNER SHARE		Gross HBP Net HBP	
									Gross Acres Net Acres	Gross Undev. Net Undev.		
MT335	25	101	154.260000 77.130000	154.260000 77.130000	0.000000 0.000000	0.000000 0.000000	JIB	0.166666666	25.709998 12.854999	25.709998 12.854999	0.000000 0.000000	
LEASE: BSO-191 - Gregory Patrick Brennan Extension of Oil and Gas - T35N-R01E-19 Township 35 North, Range 1 East Section 19: Lots 2(34.46), 3(34.66), 4(34.86), SE/4NW/4, E/2SW/4, W/2SE/4												
MT342	25	101	303.980000 303.980000	303.980000 303.980000	0.000000 0.000000	0.000000 0.000000	JIB	0.166666666	50.663331 50.663331	50.663331 50.663331	0.000000 0.000000	
LEASE: BSO-192 - John P. Bailey, a married man dealing in his sole - T35N-R01E-20 Township 35 North, Range 1 East Section 20: S/2												
MT344	25	101	320.000000 40.000000	320.000000 40.000000	0.000000 0.000000	0.000000 0.000000	JIB	0.166666666	53.333331 6.666666	53.333331 6.666666	0.000000 0.000000	
LEASE: BSO-192A - Lynda R. Lyle, individually and as heir to Kathleen - T35N-R01E-20 Township 35 North, Range 1 East Section 20: S/2												
MT344	25	101	320.000000 160.000000	320.000000 160.000000	0.000000 0.000000	0.000000 0.000000	JIB	0.166666666	53.333331 26.666665	53.333331 26.666665	0.000000 0.000000	
LEASE: BSO-192B - James W. Bailey, a married man dealing in his sole - T35N-R01E-20 Township 35 North, Range 1 East Section 20: S/2												
MT344	25	101	320.000000 40.000000	320.000000 40.000000	0.000000 0.000000	0.000000 0.000000	JIB	0.166666666	53.333331 6.666666	53.333331 6.666666	0.000000 0.000000	
LEASE: BSO-192C - Michael R. Bailey Extension of Oil and Gas Lease - T35N-R01E-20 Township 35 North, Range 1 East Section 20: S/2												
MT344	25	101	320.000000 40.000000	320.000000 40.000000	0.000000 0.000000	0.000000 0.000000	JIB	0.166666666	53.333331 6.666666	53.333331 6.666666	0.000000 0.000000	

Table 1

Partner Acreage Report

Tract Id	SI/Cou	Sub-Tract Id	Gross Total Net	Gross Undev. Net Undeveloped	Gross Developed Net Developed	Gross HBP Net HBP	W.I. Deck Id	Working Int.	PARTNER SHARE		Gross Dev. Net Dev.	Gross HBP Net HBP
									Gross Acres Net Acres	Gross Undev. Net Undev.		
LEASE: BSO-192D - Julie M. Lux, aka Julie Lux, fka Julie M. Bailey, - T35N-R01E-20												
Township 35 North, Range 1 East												
Section 20: S/2												
MT344	25	101	100	320.000000 40.000000	0.000000 0.000000	0.000000 0.000000	JIB	0.16666666	53.3333331 6.6666666	53.3333331 6.6666666	0.000000 0.000000	0.000000 0.000000
LEASE: BSO-193A - Shirley Dyrdaahl - T35N-R01E-21												
Township 35 North, Range 1 East												
Section 21: E/2												
MT345	25	101	100	320.000000 106.6666560	0.000000 0.000000	0.000000 0.000000	JIB	0.16666666	53.3333331 17.7777759	53.3333331 17.7777759	0.000000 0.000000	0.000000 0.000000
LEASE: BSO-194 - David R. Turner and Delores Turner, husband and wi - T35N-R01E-22												
Township 35 North, Range 1 East												
Section 22: S/2												
MT346	25	101	100	320.000000 320.000000	0.000000 0.000000	0.000000 0.000000	JIB	0.16666666	53.3333331 53.3333331	53.3333331 53.3333331	0.000000 0.000000	0.000000 0.000000
LEASE: BSO-195A - Paul D. Turner Extension of Oil and Gas Lease Eff - T35N-R01E-23												
Township 35 North, Range 1 East												
Section 23: S/2SW/4NW/4, west 450 feet of the SW/4SE/4NW/4												
MT348	25	101	100	26.818200 8.939399	0.000000 0.000000	0.000000 0.000000	JIB	0.16666666	4.469699 1.489899	4.469699 1.489899	0.000000 0.000000	0.000000 0.000000
LEASE: BSO-198 - Paul D. Turner, a single man Extension of Oil and - T35N-R01E-25												
Township 35 North, Range 1 East												
Section 25: W/2												
MT350	25	101	100	320.000000 320.000000	0.000000 0.000000	0.000000 0.000000	JIB	0.16666666	53.3333331 53.3333331	53.3333331 53.3333331	0.000000 0.000000	0.000000 0.000000
LEASE: BSO-199 - Mark Hannah and Harvey Hannah, Joint tenants with - T35N-R01E-25												
Township 35 North, Range 1 East												
Section 25: SE/4												

Table 1

Partner Acreage Report

Tract Id	S/Cou	Sub-Tract Id	Gross Total		Gross Undev.		Gross Developed		Gross HBP		W./i. Deck Id	Working Int.	PARTNER SHARE		Gross HBP		
			Net Total	Net Undeveloped	Net Undeveloped	Net Developed	Net HBP	Net HBP	Gross Acres	Net Undev.			Gross Undev.	Net Dev.			
MT351	25	101	160.000000	160.000000	160.000000	0.000000	0.000000	0.000000	0.000000	JIB	0.16666666	0.16666666	26.666665	26.666665	0.000000	0.000000	
LEASE: BSO-200 - Paul D. Turner, a single man Extension of Oil and - T35N-R01E-26																	
Township 35 North, Range 1 East																	
Section 26: W/2SW/4																	
MT352	25	101	80.000000	80.000000	80.000000	0.000000	0.000000	0.000000	0.000000	JIB	0.16666666	0.16666666	13.333332	13.333332	0.000000	0.000000	
LEASE: BSO-201 - Rial A. Turner, a single man Extension of Oil and - T35N-R01E-26																	
Township 35 North, Range 1 East																	
Section 26: E/2																	
MT353	25	101	320.000000	320.000000	320.000000	0.000000	0.000000	0.000000	0.000000	JIB	0.16666666	0.16666666	53.333331	53.333331	0.000000	0.000000	
LEASE: BSO-202 - Paul D. Turner, a single man Extension of Oil and - T35N-R01E-26																	
Township 35 North, Range 1 East																	
Section 26: NW/4, E/2SW/4																	
MT354	25	101	240.000000	240.000000	240.000000	0.000000	0.000000	0.000000	0.000000	JIB	0.16666666	0.16666666	39.999998	39.999998	0.000000	0.000000	
LEASE: BSO-203 - Paul D. Turner, a single man Extension of Oil and - T35N-R01E-27																	
Township 35 North, Range 1 East																	
Section 27: E/2NE/4																	
MT355	25	101	80.000000	80.000000	80.000000	0.000000	0.000000	0.000000	0.000000	JIB	0.16666666	0.16666666	13.333332	13.333332	0.000000	0.000000	
LEASE: BSO-204 - Paul D. Turner, a single man Extension of Oil and - T35N-R01E-27																	
Township 35 North, Range 1 East																	
Section 27: E/2SW/4, SE/4																	
MT356	25	101	240.000000	240.000000	240.000000	0.000000	0.000000	0.000000	0.000000	JIB	0.16666666	0.16666666	39.999998	39.999998	0.000000	0.000000	

Table 1

Partner Acreage Report

Tract Id	SI/Cou	Sub-Tract Id	Gross Total Net Total	Gross Undev. Net Undeveloped	Gross Developed Net Developed	Gross HBP Net HBP	W.I. Deck Id	Working Int.	PARTNER SHARE		Gross HBP Net HBP	
									Gross Acres Net Acres	Gross Undev. Net Undev.		
LEASE: BSO-205 - Myrtle C. Douglas, aka Mert Douglas, a married woman - T35N-R01E-27												
Township 35 North, Range 1 East												
Section 27: W/2NE/4, NW/4, W/2SW/4												
MT357	25	101	320.000000 80.000000	320.000000 80.000000	0.000000 0.000000	0.000000 0.000000	JIB	0.16666666	53.3333331 13.3333332	53.3333331 13.3333332	0.000000 0.000000	
LEASE: BSO-205A - Iva M. Bröin, a widow Extension of Oil and Gas Le - T35N-R01E-27												
Township 35 North, Range 1 East												
Section 27: W/2NE/4, NW/4, W/2SW/4												
MT357	25	101	320.000000 80.000000	320.000000 80.000000	0.000000 0.000000	0.000000 0.000000	JIB	0.16666666	53.3333331 13.3333332	53.3333331 13.3333332	0.000000 0.000000	
LEASE: BSO-205B - John C. Upton, Executor of the Estate of Sylvia G. - T35N-R01E-27												
Township 35 North, Range 1 East												
Section 27: W/2NE/4, NW/4, W/2SW/4												
MT357	25	101	320.000000 80.000000	320.000000 80.000000	0.000000 0.000000	0.000000 0.000000	JIB	0.16666666	53.3333331 13.3333332	53.3333331 13.3333332	0.000000 0.000000	
LEASE: BSO-205C - Shirley J. Wendel, a married woman dealing in her - T35N-R01E-27												
Township 35 North, Range 1 East												
Section 27: W/2NE/4, NW/4, W/2SW/4												
MT357	25	101	320.000000 80.000000	320.000000 80.000000	0.000000 0.000000	0.000000 0.000000	JIB	0.16666666	53.3333331 13.3333332	53.3333331 13.3333332	0.000000 0.000000	
LEASE: BSO-211 - Montana State of No. OG-38324-08 - T35N-R01E-35												
Township 35 North, Range 1 East												
Section 35: W/2E/2, E/2NW/4, SE/4SE/4, NE/4SW/4												
MT366	25	101	320.000000 320.000000	320.000000 320.000000	0.000000 0.000000	0.000000 0.000000	JIB	0.16666666	53.3333331 53.3333331	53.3333331 53.3333331	0.000000 0.000000	
LEASE: BSO-213 - Shelley R. Bruna, aka Shelley Bruna, a single woman - T35N-R01W-02												
Township 35 North, Range 1 West												
Section 2: S/2N/2												

Table 1

Partner Acreage Report

Tract Id	SI/Cou	Sub-Tract Id	Gross Total Net Total	Gross Undev. Net Undeveloped	Gross Developed Net Developed	Gross HBP Net HBP	W.I. Deck Id	Working Int.	PARTNER SHARE		Gross Dev. Net Dev.	Gross HBP Net HBP
									Gross Acres Net Acres	Gross Undev. Net Undev.		
MT369	25	101	160.000000 160.000000	160.000000 160.000000	0.000000 0.000000	0.000000 0.000000	JIB	0.16666666	26.666665 26.666665	26.666665 26.666665	0.000000 0.000000	0.000000 0.000000
LEASE: BSO-215 - Ida L. Hawkins, a widow Extension of Oil and Gas - T35N-R01W-02												
Township 35 North, Range 1 West												
Section 2: SW/4SE/4, N/2NE/4SW/4, SE/4NE/4SW/4, NE/4SE/4SW/4, S/2SE/4SW/4												
Township 35 North, Range 1 West												
Section 28: SW/4SE/4												
MT374	25	101	100.000000 49.583333	100.000000 49.583333	0.000000 0.000000	0.000000 0.000000	JIB	0.16666666	16.666666 8.263888	16.666666 8.263888	0.000000 0.000000	0.000000 0.000000
MT396	25	101	40.000000 20.000000	40.000000 20.000000	0.000000 0.000000	0.000000 0.000000	JIB	0.16666666	6.666666 3.333333	6.666666 3.333333	0.000000 0.000000	0.000000 0.000000
LEASE: BSO-215A - Willa Mae Kemp, a married woman dealing in her sol - T35N-R01W-02												
Township 35 North, Range 1 West												
Section 2: N/2NE/4SW/4, SE/4NE/4SW/4, NE/4SE/4SW/4, S/2SE/4SW/4, SW/4SE/4												
MT374	25	101	100.000000 16.527778	100.000000 16.527778	0.000000 0.000000	0.000000 0.000000	JIB	0.16666666	16.666666 2.754629	16.666666 2.754629	0.000000 0.000000	0.000000 0.000000
LEASE: BSO-215B - Ruthanna Rauer, a married woman dealing in her sol - T35N-R01W-02												
Township 35 North, Range 1 West												
Section 2: N/2NE/4SW/4, SE/4NE/4SW/4, NE/4SE/4SW/4, S/2SE/4SW/4, SW/4SE/4												
MT374	25	101	100.000000 16.527778	100.000000 16.527778	0.000000 0.000000	0.000000 0.000000	JIB	0.16666666	16.666666 2.754629	16.666666 2.754629	0.000000 0.000000	0.000000 0.000000
LEASE: BSO-215C - James Victor Hawkins, a married man dealing in his - T35N-R01W-02												
Township 35 North, Range 1 West												
Section 2: N/2NE/4SW/4, SE/4NE/4SW/4, NE/4SE/4SW/4, S/2SE/4SW/4, SW/4SE/4												
MT374	25	101	100.000000 16.527778	100.000000 16.527778	0.000000 0.000000	0.000000 0.000000	JIB	0.16666666	16.666666 2.754629	16.666666 2.754629	0.000000 0.000000	0.000000 0.000000
LEASE: BSO-216 - James Flaherty and Helen M. Flaherty, husband and - T35N-R01W-05												
Township 35 North, Range 1 West												
Section 5: Lot 4(40.09), SW/4NW/4, W/2SW/4												

Table 1

Partner Acreage Report

Tract Id	S/Cou	Sub-Tract Id	Gross Total Net Total	Gross Undev. Net Undeveloped	Gross Developed Net Developed	Gross HBP Net HBP	W.I. Deck Id	Working Int.	PARTNER SHARE		Gross HBP Net HBP	
									Gross Acres Net Acres	Gross Undev. Net Undev.		
MT393	25	101	160.090000 75.242300	160.090000 75.242300	0.000000 0.000000	0.000000 0.000000	JIB	0.16666666	26.661665 12.540382	26.661665 12.540382	0.000000 0.000000	
LEASE: BSO-217 - James A. Nelson, a married man dealing in his sole - T35N-R01W-10												
Township 35 North, Range 1 West												
Section 10: NE/4, N/2SE/4, SE/4SE/4												
Township 35 North, Range 1 West												
Section 11: SW/4SW/4												
MT394	25	101	280.000000 36.456000	280.000000 36.456000	0.000000 0.000000	0.000000 0.000000	JIB	0.16666666	46.666664 6.075999	46.666664 6.075999	0.000000 0.000000	
MT395	25	101	40.000000 5.208000	40.000000 5.208000	0.000000 0.000000	0.000000 0.000000	JIB	0.16666666	6.666666 0.867999	6.666666 0.867999	0.000000 0.000000	
LEASE: BSO-222 - Richard C. Nelson Extension of Oil and Gas Lease - T35N-R02W-05												
Township 35 North, Range 2 West												
Section 5: SW/4NW/4, W/2SW/4												
Township 35 North, Range 2 West												
Section 6: SE/4NE/4												
Township 36 North, Range 2 West												
Section 32: NE/4SW/4, S/2NW/4SW/4, NW/4NW/4SW/4, S/2SW/4												
MT400	25	101	120.000000 110.400000	120.000000 110.400000	0.000000 0.000000	0.000000 0.000000	JIB	0.33333334	40.000000 36.800000	40.000000 36.800000	0.000000 0.000000	
MT401	25	101	40.000000 36.800000	40.000000 36.800000	0.000000 0.000000	0.000000 0.000000	JIB	0.33333334	13.333333 12.266666	13.333333 12.266666	0.000000 0.000000	
MT402	25	101	150.000000 75.000000	150.000000 75.000000	0.000000 0.000000	0.000000 0.000000	JIB	0.33333334	50.000001 25.000000	50.000001 25.000000	0.000000 0.000000	
LEASE: BSO-226 - Rex Tomshack and Terry Tomshack, d/b/a Tomshack Br - T36N-R01E-20												
Township 36 North, Range 1 East												
Section 20: E/2NE/4, NW/4NE/4, NE/4NW/4												
MT410	25	101	160.000000 160.000000	160.000000 160.000000	0.000000 0.000000	0.000000 0.000000	JIB	0.16666666	26.666665 26.666665	26.666665 26.666665	0.000000 0.000000	

Table 1

Partner Acreage Report

Tract Id	St/Cou	Sub-Tract Id	Gross Total Net Total	Gross Undev. Net Undeveloped	Gross Developed Net Developed	Gross HBP Net HBP	W.I. Deck Id	Working Int.	PARTNER SHARE		Gross Dev. Net Dev.	Gross HBP Net HBP
									Gross Acres Net Acres	Gross Undev. Net Undev.		
LEASE: BSO-227 - Robert A. Tomsheck and Ethel J. Tomsheck,, individ - T36N-R01E-27 Township 36 North, Range 1 East Section 27: SW1/4SW1/4												
MT411	25	101 100	40.000000 40.000000	40.000000 40.000000	0.000000 0.000000	0.000000 0.000000	JIB	0.166666666	6.6666666 6.6666666	6.6666666 6.6666666	0.000000 0.000000	0.000000 0.000000
LEASE: BSO-228 - Robert A. Tomsheck and Ethel J. Tomsheck,, individ - T36N-R01E-28 Township 36 North, Range 1 East Section 28: NW1/4NE1/4, S1/2NE1/4, S1/2												
MT412	25	101 100	440.000000 440.000000	440.000000 440.000000	0.000000 0.000000	0.000000 0.000000	JIB	0.166666666	73.3333330 73.3333330	73.3333330 73.3333330	0.000000 0.000000	0.000000 0.000000
LEASE: BSO-229 - Rex Tomsheck and Terry Tomsheck, d/b/a Tomsheck Br - T36N-R01E-28 Township 36 North, Range 1 East Section 28: NW1/4												
MT413	25	101 100	160.000000 160.000000	160.000000 160.000000	0.000000 0.000000	0.000000 0.000000	JIB	0.166666666	26.6666665 26.6666665	26.6666665 26.6666665	0.000000 0.000000	0.000000 0.000000
LEASE: BSO-230 - Robert A. Tomsheck and Ethel J. Tomsheck,, individ - T36N-R01E-29 Township 36 North, Range 1 East Section 29: S1/2NW1/4, S1/2												
MT414	25	101 100	400.000000 400.000000	400.000000 400.000000	0.000000 0.000000	0.000000 0.000000	JIB	0.166666666	66.6666664 66.6666664	66.6666664 66.6666664	0.000000 0.000000	0.000000 0.000000
LEASE: BSO-231 - Rex Tomsheck and Terry Tomsheck, d/b/a Tomsheck Br - T36N-R01E-29 Township 36 North, Range 1 East Section 29: N1/2N1/2, SE1/4NE1/4												
MT417	25	101 100	200.000000 200.000000	200.000000 200.000000	0.000000 0.000000	0.000000 0.000000	JIB	0.166666666	33.3333332 33.3333332	33.3333332 33.3333332	0.000000 0.000000	0.000000 0.000000
LEASE: BSO-232 - Robert A. Tomsheck and Ethel J. Tomsheck,, individ - T36N-R01E-31 Township 36 North, Range 1 East Section 31: E1/2												

Table 1

Partner Acreage Report

Tract Id	SI/Cou	Sub-Tract Id	Gross Total Net Total	Gross Undev. Net Undeveloped	Gross Developed Net Developed	Gross HBP Net HBP	W.I. Deck Id	Working Int.	PARTNER SHARE		Gross Dev. Net Dev.	Gross HBP Net HBP
									Gross Acres Net Acres	Gross Undev. Net Undev.		
MT418	25	101	320.000000 320.000000	320.000000 320.000000	0.000000 0.000000	0.000000 0.000000	JIB	0.16666666	53.3333331 53.3333331	53.3333331 53.3333331	0.000000 0.000000	0.000000 0.000000
LEASE: BSO-233 - Robert A. Tomscheck and Ethel J. Tomscheck, individ - T36N-R01E-32												
Township 36 North, Range 1 East												
Section 32: E/2												
MT419	25	101	320.000000 320.000000	320.000000 320.000000	0.000000 0.000000	0.000000 0.000000	JIB	0.16666666	53.3333331 53.3333331	53.3333331 53.3333331	0.000000 0.000000	0.000000 0.000000
LEASE: BSO-234 - Robert A. Tomscheck and Ethel J. Tomscheck, individ - T36N-R01E-32												
Township 36 North, Range 1 East												
Section 32: W/2												
MT420	25	101	320.000000 320.000000	320.000000 320.000000	0.000000 0.000000	0.000000 0.000000	JIB	0.16666666	53.3333331 53.3333331	53.3333331 53.3333331	0.000000 0.000000	0.000000 0.000000
LEASE: BSO-235 - Robert A. Tomscheck and Ethel J. Tomscheck, individ - T36N-R01E-33												
Township 36 North, Range 1 East												
Section 33: N/2												
MT421	25	101	320.000000 320.000000	320.000000 320.000000	0.000000 0.000000	0.000000 0.000000	JIB	0.16666666	53.3333331 53.3333331	53.3333331 53.3333331	0.000000 0.000000	0.000000 0.000000
LEASE: BSO-236 - Aloysius A. Kimmel and Shirley E. Kimmel, husband - T36N-R01W-09												
Township 36 North, Range 1 West												
Section 9: E/2SE/4												
Township 36 North, Range 1 West												
Section 10: S/2NW/4, SW/4												
Township 36 North, Range 1 West												
Section 15: NW/4												
MT422	25	101	80.000000 80.000000	80.000000 80.000000	0.000000 0.000000	0.000000 0.000000	JIB	0.16666666	13.3333332 13.3333332	13.3333332 13.3333332	0.000000 0.000000	0.000000 0.000000
MT423	25	101	240.000000 240.000000	240.000000 240.000000	0.000000 0.000000	0.000000 0.000000	JIB	0.16666666	39.9999998 39.9999998	39.9999998 39.9999998	0.000000 0.000000	0.000000 0.000000

Table 1

Partner Acreage Report

Tract Id	SVCou	Sub-Tract Id	Gross Total Net Total	Gross Undev. Net Undeveloped	Gross Developed Net Developed	Gross HBP Net HBP	W.I. Deck Id	Working Int.	PARTNER SHARE		Gross Dev. Net Dev.	Gross HBP Net HBP
									Gross Acres Net Acres	Gross Undev. Net Undev.		
MT424	25	101 100	160.000000 160.000000	160.000000 160.000000	0.000000 0.000000	0.000000 0.000000	JIB	0.16666666	26.666665 26.666665	26.666665 26.666665	0.000000 0.000000	0.000000 0.000000
LEASE: BSO-237 - Marjorie Sue Kenik and Edmund Kenik, wife and husb - T36N-R01W-17												
Township 36 North, Range 1 West												
Section 17: SW/4												
Township 36 North, Range 1 West												
Section 20: NW/4												
MT425	25	101 100	160.000000 13.333332	160.000000 13.333332	0.000000 0.000000	0.000000 0.000000	JIB	0.16666666	26.666665 2.222222	26.666665 2.222222	0.000000 0.000000	0.000000 0.000000
MT426	25	101 100	160.000000 13.333332	160.000000 13.333332	0.000000 0.000000	0.000000 0.000000	JIB	0.16666666	26.666665 2.222222	26.666665 2.222222	0.000000 0.000000	0.000000 0.000000
LEASE: BSO-237B - Kristine Allen, Trustees of the Kristine Allen Trus - T36N-R01W-17												
Township 36 North, Range 1 West												
Section 17: SW/4												
Township 36 North, Range 1 West												
Section 20: NW/4												
MT425	25	101 100	160.000000 26.666665	160.000000 26.666665	0.000000 0.000000	0.000000 0.000000	JIB	0.16666666	26.666665 4.444444	26.666665 4.444444	0.000000 0.000000	0.000000 0.000000
MT426	25	101 100	160.000000 26.666665	160.000000 26.666665	0.000000 0.000000	0.000000 0.000000	JIB	0.16666666	26.666665 4.444444	26.666665 4.444444	0.000000 0.000000	0.000000 0.000000
LEASE: BSO-237D - Waller A. Wilmann, a single man Extension of Oil - T36N-R01W-17												
Township 36 North, Range 1 West												
Section 17: SW/4												
Township 36 North, Range 1 West												
Section 20: NW/4												
MT425	25	101 100	160.000000 33.333332	160.000000 33.333332	0.000000 0.000000	0.000000 0.000000	JIB	0.16666666	26.666665 5.555555	26.666665 5.555555	0.000000 0.000000	0.000000 0.000000
MT426	25	101 100	160.000000 33.333332	160.000000 33.333332	0.000000 0.000000	0.000000 0.000000	JIB	0.16666666	26.666665 5.555555	26.666665 5.555555	0.000000 0.000000	0.000000 0.000000

Table 1

Partner Acreage Report

Tract Id	SI/Cou	Sub-Tract Id	Gross Total Net Total	Gross Undev. Net Undeveloped	Gross Developed Net Developed	Gross HBP Net HBP	W.I. Deck Id	Working Int.	PARTNER SHARE		Gross Dev. Net Dev.	Gross HBP Net HBP
									Gross Acres Net Acres	Gross Undev. Net Undev.		
LEASE: BSO-238 - Iowa Holding Company, a Minnesota Corporation - T36N-R01W-23												
Township 36 North, Range 1 West												
Section 23: S/2S/2												
Township 36 North, Range 1 West												
Section 26: N/2N/2												
MT427	25	101	100	160.000000	0.000000	0.000000	JIB	0.166666666	26.6666665	26.6666665	0.000000	0.000000
				8.000000	0.000000	0.000000			1.3333333	1.3333333	0.000000	0.000000
MT428	25	101	100	160.000000	0.000000	0.000000	JIB	0.166666666	26.6666665	26.6666665	0.000000	0.000000
				8.000000	0.000000	0.000000			1.3333333	1.3333333	0.000000	0.000000
LEASE: BSO-241 - Lorna Loterbauer, individually and as Trustee of t - T36N-R01W-32												
Township 36 North, Range 1 West												
Section 32: E/2NE/4, NE/4SE/4												
Township 36 North, Range 1 West												
Section 33: E/2, NW/4, N/2SW/4, SW/4SW4												
MT431	25	101	100	120.000000	0.000000	0.000000	JIB	0.166666666	19.9999999	19.9999999	0.000000	0.000000
				120.000000	0.000000	0.000000			19.9999999	19.9999999	0.000000	0.000000
MT432	25	101	100	120.000000	0.000000	0.000000	JIB	0.166666666	19.9999999	19.9999999	0.000000	0.000000
				115.200000	0.000000	0.000000			19.1999999	19.1999999	0.000000	0.000000
MT467	25	101	100	480.000000	0.000000	0.000000	JIB	0.166666666	79.9999996	79.9999996	0.000000	0.000000
				480.000000	0.000000	0.000000			79.9999996	79.9999996	0.000000	0.000000
LEASE: BSO-245 - North Toole County Cemetery District - T34N-R01E-19												
Township 34 North, Range 1 East												
Section 19: A 3.00 acre tract of land located in the NENE and more particularly described in book 1 of deeds at page 409.												
Johannsen 1-19												
MT435	25	101	100	3.000000	0.000000	0.000000	JIB	0.166666666	0.4999999	0.4999999	0.000000	0.4999999
				3.000000	0.000000	0.000000			0.4999999	0.4999999	0.000000	0.4999999
PROSPECT: T0001 - Toole Co. Bakken Lse. Play												

Table 1

Partner Acreage Report

Tract Id	SI/Cou	Sub-Tract Id	Gross Total Net Total	Gross Undev. Net Undeveloped	Gross Developed Net Developed	Gross HBP Net HBP	W.I. Deck Id	Working Int.	PARTNER SHARE		Gross Dev. Net Dev.	Gross HBP Net HBP
									Gross Acres Net Acres	Gross Undev. Net Undev.		
LEASE: BSO-001 - Ronald J. Jensen and Karen A. Jensen - T35N/R01E-01												
Township 35 North, Range 1 East												
Section 1: S/2NE/4, SE/4SW/4, NW/4SE/4, S/2SE/4												
Township 35 North, Range 1 East												
Section 1: SW/4SW/4, NE/4SE/4												
Township 35 North, Range 1 East												
Section 12: N/2NE/4												
Township 35 North, Range 1 East												
Section 12: E/2SW/4NE/4, SE/4NE/4, W/2, N/2SE/4												
Township 35 North, Range 2 East												
Section 6: Lots 3(39.49), 4(36.33), 5(36.43)												
Township 35 North, Range 2 East												
Section 7: Lots 1(36.36), 2(36.46), NE/4, E/2NW/4												
Township 36 North, Range 2 East (NO TANGLEWOOD)												
Section 31: Lots 1(36.27), 2(36.34), 3(36.40), 4(36.47), E/2SW/4												
MT001	25	101	100	240.000000	0.000000	0.000000	0.000000	JIB	0.166666666	39.999998	0.000000	0.000000
				120.000000	0.000000	0.000000	0.000000			19.999999	0.000000	0.000000
MT002	25	101	100	80.000000	0.000000	0.000000	0.000000	JIB	0.166666666	13.333332	0.000000	0.000000
				80.000000	0.000000	0.000000	0.000000			13.333332	0.000000	0.000000
MT003	25	101	100	80.000000	0.000000	0.000000	0.000000	JIB	0.166666666	13.333332	0.000000	0.000000
				40.000000	0.000000	0.000000	0.000000			6.666666	0.000000	0.000000
MT004	25	101	100	460.000000	0.000000	0.000000	0.000000	JIB	0.166666666	76.666663	0.000000	0.000000
				460.000000	0.000000	0.000000	0.000000			76.666663	0.000000	0.000000
MT005	25	101	100	112.250000	0.000000	0.000000	0.000000	JIB	0.166666666	18.708332	0.000000	0.000000
				112.250000	0.000000	0.000000	0.000000			18.708332	0.000000	0.000000
MT006	25	101	100	312.820000	0.000000	0.000000	0.000000	JIB	0.166666666	52.136664	0.000000	0.000000
				312.820000	0.000000	0.000000	0.000000			52.136664	0.000000	0.000000
MT007	25	101	100	225.480000	0.000000	0.000000	0.000000	JIB-1	0.333333334	75.160001	0.000000	0.000000
				225.480000	0.000000	0.000000	0.000000			75.160001	0.000000	0.000000

Table 1

Partner Acreage Report

Tract Id	SV/Cou	Sub-Tract Id	Gross Total Net Total	Gross Undev. Net Undeveloped	Gross Developed Net Developed	Gross HBP Net HBP	W.I. Deck Id	Working Int.	PARTNER SHARE		Gross Dev. Net Dev.	Gross HBP Net HBP
									Gross Acres Net Acres	Gross Undev. Net Undev.		
LEASE: BSO-001A - Marcia A. Bjorklund O'Donnell, fka Marcia A. Bjork - T35N-R01E-01												
Township 35 North, Range 1 East												
Section 1: S/2NE/4, SE/4SW/4, NW/4SE/4, S/2SE/4												
Township 35 North, Range 1 East												
Section 12: N/2NE/4												
MT001	25	101	100	240,000,000	0,000,000	0,000,000	0,000,000	JIB	0.16666666	39,999,999	0,000,000	0,000,000
				120,000,000	0,000,000	0,000,000	0,000,000			19,999,999	0,000,000	0,000,000
MT003	25	101	100	80,000,000	0,000,000	0,000,000	0,000,000	JIB	0.16666666	13,333,332	0,000,000	0,000,000
				40,000,000	0,000,000	0,000,000	0,000,000			6,666,666	0,000,000	0,000,000
LEASE: BSO-002 - Jean J. Jensen, Trustee of the Jensen Family Trus - T35N-R02E-17												
Township 35 North, Range 2 East												
Section 17: SW/4NW/4, N/2SW/4, NW/4SE/4												
MT008	25	101	100	160,000,000	0,000,000	0,000,000	0,000,000	JIB	0.16666666	26,666,665	0,000,000	0,000,000
				160,000,000	0,000,000	0,000,000	0,000,000			26,666,665	0,000,000	0,000,000
LEASE: BSO-003 - Eagle Creek Colony, Inc. a Montana corporation - T35N-R01E-12, T35N-R02E-17												
Township 35 North, Range 1 East												
Section 12: W/2SW/4NE/4												
Township 35 North, Range 2 East												
Section 17: NE/4, E/2NW/4, E/2SE/4												
Township 35 North, Range 2 East												
Section 19: Lots 3(37.39), 4(37.49), E/2SW/4, SW/4SE/4												
Township 35 North, Range 2 East												
Section 19: NE/4SE/4												
Township 35 North, Range 2 East												
Section 20: NE/4NE/4, S/2N/2, N/2SW/4, NW/4SE/4												
Township 35 North, Range 2 East												
Section 30: W/2NE/4												

Table 1

Partner Acreage Report

Tract Id	SVCou	Sub-Tract Id	Gross Total Net Total	Gross Undev. Net Undeveloped	Gross Developed Net Developed	Gross HBP Net HBP	W.I. Deck Id	Working Int.	PARTNER SHARE		Gross Dev. Net Dev.	Gross HBP Net HBP
									Gross Acres Net Acres	Gross Undev. Net Undev.		
MT009	25	101	20,000,000 20,000,000	20,000,000 20,000,000	0,000,000 0,000,000	0,000,000 0,000,000	JIB	0.166666666	3,333,333 3,333,333	3,333,333 3,333,333	0,000,000 0,000,000	0,000,000 0,000,000
MT010	25	101	320,000,000 320,000,000	320,000,000 320,000,000	0,000,000 0,000,000	0,000,000 0,000,000	JIB	0.166666666	53,333,331 53,333,331	53,333,331 53,333,331	0,000,000 0,000,000	0,000,000 0,000,000
MT011	25	101	194,880,000 175,392,000	194,880,000 175,392,000	0,000,000 0,000,000	0,000,000 0,000,000	JIB	0.166666666	32,479,998 29,231,998	32,479,998 29,231,998	0,000,000 0,000,000	0,000,000 0,000,000
MT012	25	101	40,000,000 40,000,000	40,000,000 40,000,000	0,000,000 0,000,000	0,000,000 0,000,000	JIB	0.166666666	6,666,666 6,666,666	6,666,666 6,666,666	0,000,000 0,000,000	0,000,000 0,000,000
MT013	25	101	320,000,000 320,000,000	320,000,000 320,000,000	0,000,000 0,000,000	0,000,000 0,000,000	JIB	0.166666666	53,333,331 53,333,331	53,333,331 53,333,331	0,000,000 0,000,000	0,000,000 0,000,000
MT014	25	101	80,000,000 72,000,000	80,000,000 72,000,000	0,000,000 0,000,000	0,000,000 0,000,000	JIB	0.166666666	13,333,332 11,999,999	13,333,332 11,999,999	0,000,000 0,000,000	0,000,000 0,000,000
LEASE: BSO-004 - Carl G. Stabronski, a married man dealing in his s - T35N-R02E-10												
Township 35 North, Range 2 East												
Section 10: W/2												
MT015	25	101	320,000,000 160,000,000	320,000,000 160,000,000	0,000,000 0,000,000	0,000,000 0,000,000	JIB	0.166666666	53,333,331 26,666,665	53,333,331 26,666,665	0,000,000 0,000,000	0,000,000 0,000,000
LEASE: BSO-004A - Norma J. Wood, a widow - T35N-R01E-01												
Township 35 North, Range 1 East												
Section 1: Lots 1(40.00), 2(40.01), 3(40.01), 4(40.01), 4(40.02), S/2NW/4, N/2SW/4												
Township 35 North, Range 2 East												
Section 10: E/2												
Township 35 North, Range 2 East												
Section 10: W/2												
Township 35 North, Range 2 East												
Section 11: W/2												
MT015	25	101	320,000,000 80,000,000	320,000,000 80,000,000	0,000,000 0,000,000	0,000,000 0,000,000	JIB	0.166666666	53,333,331 13,333,332	53,333,331 13,333,332	0,000,000 0,000,000	0,000,000 0,000,000

Table 1

Partner Acreage Report

Tract Id	SI/Cou	Sub-Tract Id	Gross Total Net Total	Gross Undev. Net Undeveloped	Gross Developed Net Developed	Gross HBP Net HBP	W.I. Deck Id	Working Int.	PARTNER SHARE		Gross Dev. Net Dev.	Gross HBP Net HBP
									Gross Acres Net Acres	Gross Undev. Net Undev.		
MT027	25	101	320.040000 160.020000	320.040000 160.020000	0.000000 0.000000	0.000000 0.000000	JIB	0.16666666	53.339997 26.669998	53.339997 26.669998	0.000000 0.000000	0.000000 0.000000
MT028	25	101	320.000000 160.000000	320.000000 160.000000	0.000000 0.000000	0.000000 0.000000	JIB	0.16666666	53.333331 26.666665	53.333331 26.666665	0.000000 0.000000	0.000000 0.000000
MT030	25	101	320.000000 160.000000	320.000000 160.000000	0.000000 0.000000	0.000000 0.000000	JIB	0.16666666	53.333331 26.666665	53.333331 26.666665	0.000000 0.000000	0.000000 0.000000
LEASE: BSO-004B - Norma J. Wood, as Trustee for Norma J. Wood, in Tr - T35N-R01E-01												
Township 35 North, Range 1 East												
Section 1: Lots 1(40.00), 2(40.01), 3(40.01), 4(40.02), S/2NW/4, N/2SW/4												
Township 35 North, Range 2 East												
Section 10: E/2												
Township 35 North, Range 2 East												
Section 10: W/2												
MT015	25	101	320.000000 80.000000	320.000000 80.000000	0.000000 0.000000	0.000000 0.000000	JIB	0.16666666	53.333331 13.333332	53.333331 13.333332	0.000000 0.000000	0.000000 0.000000
MT027	25	101	320.040000 160.020000	320.040000 160.020000	0.000000 0.000000	0.000000 0.000000	JIB	0.16666666	53.339997 26.669998	53.339997 26.669998	0.000000 0.000000	0.000000 0.000000
MT028	25	101	320.000000 160.000000	320.000000 160.000000	0.000000 0.000000	0.000000 0.000000	JIB	0.16666666	53.333331 26.666665	53.333331 26.666665	0.000000 0.000000	0.000000 0.000000
MT030	25	101	320.000000 160.000000	320.000000 160.000000	0.000000 0.000000	0.000000 0.000000	JIB	0.16666666	53.333331 26.666665	53.333331 26.666665	0.000000 0.000000	0.000000 0.000000
LEASE: BSO-005 - Ronald J. Jensen and Karen A. Jensen, husband and - T35N-R01E-13												
Township 35 North, Range 1 East												
Section 13: E/2												
MT016	25	101	320.000000 320.000000	320.000000 320.000000	0.000000 0.000000	0.000000 0.000000	JIB	0.16666666	53.333331 53.333331	53.333331 53.333331	0.000000 0.000000	0.000000 0.000000

Table 1

Partner Acreage Report

Tract Id	SI/Cou	Sub-Tract Id	Gross Total Net Total	Gross Undev. Net Undeveloped	Gross Developed Net Developed	Gross HBP Net HBP	W.I. Deck Id	Working Int.	PARTNER SHARE		Gross Dev. Net Dev.	Gross HBP Net HBP
									Gross Acres Net Acres	Gross Undev. Net Undev.		
LEASE: BSO-006 - Ronald J. Jensen and Karen A. Jensen, husband and - T35N-R02E-08												
Township 35 North, Range 2 East												
Section 8: W/2SW/4, SE/4SW/4												
MT017	25	101	120,000,000 120,000,000	120,000,000 120,000,000	0,000,000 0,000,000	0,000,000 0,000,000	JIB	0.16666666	19,999,999 19,999,999	19,999,999 19,999,999	0,000,000 0,000,000	0,000,000 0,000,000
LEASE: BSO-007 - Dr. Mary Sanderson and Stanley Sanderson, as heirs - T35N-R02E-06												
Township 35 North, Range 2 East												
Section 6: Lot 2(39.13), SW/4NE/4, SE/4NW/4												
Township 36 North, Range 2 East												
Section 31: W/2E/2, NE/4NW/4												
MT018	25	101	119,130,000 119,130,000	119,130,000 119,130,000	0,000,000 0,000,000	0,000,000 0,000,000	JIB	0.16666666	19,854,999 19,854,999	19,854,999 19,854,999	0,000,000 0,000,000	0,000,000 0,000,000
MT019	25	101	200,000,000 200,000,000	200,000,000 200,000,000	0,000,000 0,000,000	0,000,000 0,000,000	JIB	0.16666666	33,333,332 33,333,332	33,333,332 33,333,332	0,000,000 0,000,000	0,000,000 0,000,000
LEASE: BSO-008 - Donna Marie Page, a single woman - T35N-R01W-08-09												
Township 35 North, Range 1 West												
Section 8: SE/4												
Township 35 North, Range 1 West												
Section 9: SW/4												
MT020	25	101	160,000,000 40,000,000	160,000,000 40,000,000	0,000,000 0,000,000	0,000,000 0,000,000	JIB	0.16666666	26,666,665 6,666,666	26,666,665 6,666,666	0,000,000 0,000,000	0,000,000 0,000,000
MT021	25	101	160,000,000 40,000,000	160,000,000 40,000,000	0,000,000 0,000,000	0,000,000 0,000,000	JIB	0.16666666	26,666,665 6,666,666	26,666,665 6,666,666	0,000,000 0,000,000	0,000,000 0,000,000
LEASE: BSO-009 - Beverly J. Nash, a married woman dealing in her so - T37N-R02E-31												
Township 37 North, Range 2 East												
Section 31: Lot 4(40.05), SE/4SW/4, S/2SE/4												
Township 37 North, Range 2 East												
Section 32: W/2SW/4												

Table 1

Partner Acreage Report

Tract Id	SI/Cou	Sub-Tract Id	Gross Total		Gross Undeveloped		Gross Developed		Gross HBP		W.I. Deck Id	Working Int.	PARTNER SHARE		Gross Dev.		Gross HBP	
			Net Total	Net Undeveloped	Net Undeveloped	Net Developed	Net HBP	Net Undev.	Net Acres	Gross Undev.			Net Dev.	Net HBP				
MT022	25	101	160.050000	160.050000	0.000000	0.000000	0.000000	0.000000	0.000000	0.000000	JIB	0.333333334	53.350001	53.350001	0.000000	0.000000	0.000000	0.000000
			80.025000	80.025000	0.000000	0.000000	0.000000	0.000000	0.000000	0.000000			26.675000	26.675000	0.000000	0.000000	0.000000	0.000000
MT023	25	101	80.000000	80.000000	0.000000	0.000000	0.000000	0.000000	0.000000	0.000000	JIB	0.333333334	26.666667	26.666667	0.000000	0.000000	0.000000	0.000000
			40.000000	40.000000	0.000000	0.000000	0.000000	0.000000	0.000000	0.000000			13.333333	13.333333	0.000000	0.000000	0.000000	0.000000
MT039	25	101	147.290000	147.290000	0.000000	0.000000	0.000000	0.000000	0.000000	0.000000	JIB	0.333333334	49.096667	49.096667	0.000000	0.000000	0.000000	0.000000
			0.000000	0.000000	0.000000	0.000000	0.000000	0.000000	0.000000	0.000000			0.000000	0.000000	0.000000	0.000000	0.000000	0.000000
LEASE: BSO-009A - Colette I. Zimmerman, a married woman dealing in h - T37N-R02E-31-32																		
Township 37 North, Range 2 East																		
Section 31: Lot 4(40.05), SE/4SW/4, S/2SE/4																		
Township 37 North, Range 2 East																		
Section 32: W/2SW/4																		
Township 36 North, Range 2 East																		
Section 6: Lots 3(39.21), 4(33.62), 5(34.46), SE/4NW/4																		
MT022	25	101	160.050000	160.050000	0.000000	0.000000	0.000000	0.000000	0.000000	0.000000	JIB	0.333333334	53.350001	53.350001	0.000000	0.000000	0.000000	0.000000
			20.006250	20.006250	0.000000	0.000000	0.000000	0.000000	0.000000	0.000000			6.668750	6.668750	0.000000	0.000000	0.000000	0.000000
MT023	25	101	80.000000	80.000000	0.000000	0.000000	0.000000	0.000000	0.000000	0.000000	JIB	0.333333334	26.666667	26.666667	0.000000	0.000000	0.000000	0.000000
			10.000000	10.000000	0.000000	0.000000	0.000000	0.000000	0.000000	0.000000			3.333333	3.333333	0.000000	0.000000	0.000000	0.000000
MT039	25	101	147.290000	147.290000	0.000000	0.000000	0.000000	0.000000	0.000000	0.000000	JIB	0.333333334	49.096667	49.096667	0.000000	0.000000	0.000000	0.000000
			18.411250	18.411250	0.000000	0.000000	0.000000	0.000000	0.000000	0.000000			6.137083	6.137083	0.000000	0.000000	0.000000	0.000000
LEASE: BSO-009B - Helen M. Leek, a married woman dealing in her sole - T37N-R02E-31																		
Township 37 North, Range 2 East																		
Section 31: Lot 4(40.05), SE/4SW/4, S/2SE/4																		
Township 37 North, Range 2 East																		
Section 32: W/2SW/4																		
Township 36 North, Range 2 East																		
Section 6: Lots 3(39.21), 4(33.62), 5(34.46), SE/4NW/4																		
MT022	25	101	160.050000	160.050000	0.000000	0.000000	0.000000	0.000000	0.000000	0.000000	JIB	0.166666666	26.674998	26.674998	0.000000	0.000000	0.000000	0.000000
			20.006250	20.006250	0.000000	0.000000	0.000000	0.000000	0.000000	0.000000			3.334374	3.334374	0.000000	0.000000	0.000000	0.000000

Table 1

Partner Acreage Report

Tract Id	S/Cou	Sub-Tract Id	Gross Total		Gross Undev.		Gross Developed		Gross HBP		W./I. Deck Id	Working Int.	PARTNER SHARE		Gross Dev.		Gross HBP	
			Net Total	Net Undeveloped	Net Undeveloped	Net Developed	Net HBP	Net Undev.	Net Undev.	Net Dev.			Net HBP	Net Undev.	Net Dev.	Net HBP		
MT023	25	101	100	80,000,000	10,000,000	10,000,000	0,000,000	0,000,000	0,000,000	0,000,000	JIB	0.16666666	13,333,332	13,333,332	0,000,000	0,000,000	0,000,000	0,000,000
MT039	25	101	100	147,290,000	18,411,250	147,290,000	0,000,000	0,000,000	0,000,000	0,000,000	JIB	0.16666666	24,548,332	24,548,332	0,000,000	0,000,000	0,000,000	0,000,000
LEASE: BSO-009C - Lucile S. Smith, a married woman dealing in her so - T37N-R02E-31																		
Township 37 North, Range 2 East																		
Section 31: Lot 4(40.05), SE/4SW/4, S/2SE/4																		
Township 37 North, Range 2 East																		
Section 32: W/2SW/4																		
Township 36 North, Range 2 East																		
Section 6: Lots 3(39.21), 4(33.62), 5(34.46), SE/4NW/4																		
MT022	25	101	100	160,050,000	20,006,250	20,006,250	0,000,000	0,000,000	0,000,000	0,000,000	JIB	0.16666666	26,674,998	26,674,998	0,000,000	0,000,000	0,000,000	0,000,000
MT023	25	101	100	80,000,000	10,000,000	80,000,000	0,000,000	0,000,000	0,000,000	0,000,000	JIB	0.16666666	13,333,332	13,333,332	0,000,000	0,000,000	0,000,000	0,000,000
MT039	25	101	100	147,290,000	18,411,250	147,290,000	0,000,000	0,000,000	0,000,000	0,000,000	JIB	0.16666666	24,548,332	24,548,332	0,000,000	0,000,000	0,000,000	0,000,000
LEASE: BSO-009D - Beverly J. Nash, a married woman dealing in her so - T36N-R02E-06																		
Township 36 North, Range 2 East																		
Section 6: Lots 3(39.21), 4(33.62), 5(34.46), SE/4NW/4																		
MT039	25	101	100	147,290,000	18,411,250	147,290,000	0,000,000	0,000,000	0,000,000	0,000,000	JIB	0.16666666	24,548,332	24,548,332	0,000,000	0,000,000	0,000,000	0,000,000
LEASE: BSO-010 - Marshall Farms, Inc. - T34N-R01E-30																		
Township 34 North, Range 1 East																		
Section 30: E/2																		
MT024	25	101	100	320,000,000	320,000,000	320,000,000	0,000,000	0,000,000	0,000,000	0,000,000	JIB	0.16666666	53,333,331	53,333,331	0,000,000	0,000,000	0,000,000	0,000,000

Table 1

Partner Acreage Report

Tract Id	SI/Cou	Sub-Tract Id	Gross Total Net Total	Gross Undev. Net Undeveloped	Gross Developed Net Developed	Gross HBP Net HBP	W.I. Deck Id	Working Int.	PARTNER SHARE		Gross Dev. Net Dev.	Gross HBP Net HBP
									Gross Acres Net Acres	Gross Undev. Net Undev.		
LEASE: BSO-013 - Montana State of No. OG-40513-11 - T35N-R01E-24												
Township 35 North, Range 1 East												
Section 24: N/2, SE/4												
MT031	25	101	100	480.000000 480.000000	0.000000 0.000000	0.000000 0.000000	JIB	0.166666666	79.999996 79.999996	79.999996 79.999996	0.000000 0.000000	0.000000 0.000000
LEASE: BSO-014 - Montana State of No. OG-40514-11 - T35N-R01E-25												
Township 35 North, Range 1 East												
Section 25: NE/4												
MT032	25	101	100	160.000000 160.000000	0.000000 0.000000	0.000000 0.000000	JIB	0.166666666	26.666665 26.666665	26.666665 26.666665	0.000000 0.000000	0.000000 0.000000
LEASE: BSO-015 - Marias Land Company, LLC - T35N-R02E-19												
Township 35 North, Range 2 East												
Section 19: Lots 1(37.19), 2(37.29), W/2NE/4, SE/4NE/4, E/2NW/4												
MT033	25	101	100	274.480000 45.749997	0.000000 0.000000	0.000000 0.000000	JIB	0.166666666	45.746664 7.624999	45.746664 7.624999	0.000000 0.000000	0.000000 0.000000
LEASE: BSO-015A - Hanover Fysl, Inc. - T35N-R02E-19												
Township 35 North, Range 2 East												
Section 19: Lots 1(37.19), 2(37.29), W/2NE/4, SE/4NE/4, E/2NW/4												
MT033	25	101	100	274.480000 45.749997	0.000000 0.000000	0.000000 0.000000	JIB	0.166666666	45.746664 7.624999	45.746664 7.624999	0.000000 0.000000	0.000000 0.000000
LEASE: BSO-015B - Frank Sparks, a married man dealing in his sole an - T35N-R02E-19												
Township 35 North, Range 2 East												
Section 19: Lots 1(37.19), 2(37.29), W/2NE/4, SE/4NE/4, E/2NW/4												
MT033	25	101	100	274.480000 45.749997	0.000000 0.000000	0.000000 0.000000	JIB	0.166666666	45.746664 7.624999	45.746664 7.624999	0.000000 0.000000	0.000000 0.000000
LEASE: BSO-015C - Inez L. Roberts, a widow and as an heir of William - T35N-R02E-19												
Township 35 North, Range 2 East												
Section 19: Lots 1(37.19), 2(37.29), W/2NE/4, SE/4NE/4, E/2NW/4												
MT033	25	101	100	274.480000 45.749997	0.000000 0.000000	0.000000 0.000000	JIB	0.166666666	45.746664 7.624999	45.746664 7.624999	0.000000 0.000000	0.000000 0.000000

Table 1

Partner Acreage Report

Tract Id	S/Cou	Sub-Tract Id	Gross Total Net Total	Gross Undev. Net Undeveloped	Gross Developed Net Developed	Gross HBP Net HBP	W./i. Deck Id	Working Int.	PARTNER SHARE		Gross HBP Net HBP	
									Gross Acres Net Acres	Gross Undev. Net Undev.		
MT033	25	101	274.480000 22.873332	274.480000 22.873332	0.000000 0.000000	0.000000 0.000000	JIB	0.16666666	45.746664 3.812221	45.746664 3.812221	0.000000 0.000000	
LEASE: BSO-015D - George H. Roberts, a single man - T35N-R02E-19												
Township 35 North, Range 2 East												
Section 19: Lots 1(37.19), 2(37.29), W/2NE/4, SE/4NE/4, E/2NW/4												
MT033	25	101	274.480000 22.873332	274.480000 22.873332	0.000000 0.000000	0.000000 0.000000	JIB	0.16666666	45.746664 3.812221	45.746664 3.812221	0.000000 0.000000	
LEASE: BSO-017 - Beverly St. Sauver, Personal Representative of th - T34N-R02E-07												
Township 34 North, Range 2 East												
Section 7: Lots 1(38.87), 2(38.85), 3(38.83), 4(38.81), E/2W/2												
MT035	25	101	315.360000 315.360000	315.360000 315.360000	0.000000 0.000000	0.000000 0.000000	JIB	0.16666666	52.559997 52.559997	52.559997 52.559997	0.000000 0.000000	
LEASE: BSO-018 - Ronald Jensen, aka Ronald J. Jensen, a married man - T37N-R02E-19												
Township 37 North, Range 2 East												
Section 19: SE/4SW/4, SW/4SE/4												
MT036	25	101	80.000000 13.340000	80.000000 13.340000	0.000000 0.000000	0.000000 0.000000	JIB	0.33333334	26.666667 4.446666	26.666667 4.446666	0.000000 0.000000	
MT037	25	101	240.000000 40.000000	240.000000 40.000000	0.000000 0.000000	0.000000 0.000000	JIB	0.33333334	80.000001 13.333333	80.000001 13.333333	0.000000 0.000000	
MT038	25	101	160.000000 26.666667	160.000000 26.666667	0.000000 0.000000	0.000000 0.000000	JIB	0.33333334	53.333334 8.888889	53.333334 8.888889	0.000000 0.000000	
LEASE: BSO-018A - Robin Nanini, aka Robin L. Nanini, a married woman - T37N-R02E-19												
Township 37 North, Range 2 East												
Section 19: SE/4SW/4, SW/4SE/4												

Table 1

Partner Acreage Report

Tract Id	S/Cou	Sub-Tract Id	Gross Total Net	Gross Undev. Net Undeveloped	Gross Developed Net Developed	Gross HBP Net HBP	W.I. Deck Id	Working Int.	PARTNER SHARE		Gross Dev. Net Dev.	Gross HBP Net HBP
									Gross Acres	Net Undev.		
Township 37 North, Range 2 East												
Section 20: S/2NW/4, SW/4												
MT036	25	101	80.000000	80.000000	0.000000	0.000000	JIB	0.333333334	26.666667	26.666667	0.000000	0.000000
			13.340000	13.340000	0.000000	0.000000			4.446666	4.446666	0.000000	0.000000
MT037	25	101	240.000000	240.000000	0.000000	0.000000	JIB	0.333333334	80.000001	80.000001	0.000000	0.000000
			39.999998	39.999998	0.000000	0.000000			13.333333	13.333333	0.000000	0.000000
MT038	25	101	160.000000	160.000000	0.000000	0.000000	JIB	0.333333334	53.333334	53.333334	0.000000	0.000000
			26.666665	26.666665	0.000000	0.000000			8.888888	8.888888	0.000000	0.000000
LEASE: BSO-018B - Ryan Jensen, aka Ryan K. Jensen, a married man dea - T37N-R02E-19												
Township 37 North, Range 2 East												
Section 19: SE/4SW/4, SW/4SE/4												
Township 37 North, Range 2 East												
Section 20: S/2NW/4, SW/4												
MT036	25	101	80.000000	80.000000	0.000000	0.000000	JIB	0.333333334	26.666667	26.666667	0.000000	0.000000
			13.340000	13.340000	0.000000	0.000000			4.446666	4.446666	0.000000	0.000000
MT037	25	101	240.000000	240.000000	0.000000	0.000000	JIB	0.333333334	80.000001	80.000001	0.000000	0.000000
			40.000000	40.000000	0.000000	0.000000			13.333333	13.333333	0.000000	0.000000
MT038	25	101	160.000000	160.000000	0.000000	0.000000	JIB	0.333333334	53.333334	53.333334	0.000000	0.000000
			26.666667	26.666667	0.000000	0.000000			8.888889	8.888889	0.000000	0.000000
LEASE: BSO-020 - Continental Land Company - T37N-R02E-19												
Township 37 North, Range 2 East												
Section 19: Lot 1(39.93), NE/4NW/4, W/2NE/4												
MT040	25	101	159.930000	159.930000	0.000000	0.000000	JIB	0.333333334	53.310001	53.310001	0.000000	0.000000
			159.930000	159.930000	0.000000	0.000000			53.310001	53.310001	0.000000	0.000000

Table 1

Partner Acreage Report

Tract Id	SU/Cou	Sub-Tract Id	Gross Total		Gross Undev.		Gross Developed		Gross HBP		Working Int.	PARTNER SHARE		Gross HBP		
			Net Total	Net Undeveloped	Net Undeveloped	Net Developed	Net HBP	Net HBP	Net Acres	Gross Undev.		Net Undev.	Net Dev.	Net Dev.		
LEASE: BSO-092B - Elaine G. Peterson, a single woman and as an heir - T33N-R01E-06																
Township 33 North, Range 1 East																
Section 6: Lots 3(39.88), 4(37.34), 5(37.61), 6(37.85), 7(38.08), SE/4NW/4, E/2SW/4																
MT169	25	101	100	310.760000	310.760000	12.950000	12.950000	0.000000	0.000000	0.000000	JIB	0.333333334	103.586668	103.586668	0.000000	0.000000
				12.950000				0.000000	0.000000	0.000000			4.316666	4.316666	0.000000	0.000000
LEASE: BSO-092C - Donald P. Foster, a single man and as an heir of G - T33N-R01E-06																
Township 33 North, Range 1 East																
Section 6: Lots 3(39.88), 4(37.34), 5(37.61), 6(37.85), 7(38.08), SE/4NW/4, E/2SW/4																
MT169	25	101	100	310.760000	310.760000	12.950000	12.950000	0.000000	0.000000	0.000000	JIB	0.333333334	103.586668	103.586668	0.000000	0.000000
				12.950000				0.000000	0.000000	0.000000			4.316666	4.316666	0.000000	0.000000
LEASE: BSO-092D - Betty Jean Foster, a single woman, individually an - T33N-R01E-06																
Township 33 North, Range 1 East																
Section 6: Lots 3(39.88), 4(37.34), 5(37.61), 6(37.85), 7(38.08), SE/4NW/4, E/2SW/4																
MT169	25	101	100	310.760000	310.760000	25.900000	25.900000	0.000000	0.000000	0.000000	JIB	0.333333334	103.586668	103.586668	0.000000	0.000000
				25.900000				0.000000	0.000000	0.000000			8.633333	8.633333	0.000000	0.000000
LEASE: BSO-146 - Laurie L. Anderson, a married woman dealing in her - T34N-R01E-01																
Township 34 North, Range 1 East																
Section 1: SW/4																
Township 34 North, Range 1 East																
Section 12: NW/4																
MT253	25	101	100	160.000000	160.000000	10.000000	10.000000	0.000000	0.000000	0.000000	JIB	0.166666666	26.666665	26.666665	0.000000	0.000000
				10.000000				0.000000	0.000000	0.000000			1.666666	1.666666	0.000000	0.000000
MT254	25	101	100	160.000000	160.000000	10.000000	10.000000	0.000000	0.000000	0.000000	JIB	0.166666666	26.666665	26.666665	0.000000	0.000000
				10.000000				0.000000	0.000000	0.000000			1.666666	1.666666	0.000000	0.000000
LEASE: BSO-146B - Sheldon L. Haas, a married man dealing in his sole - T34N-R01E-01																
Township 34 North, Range 1 East																
Section 1: SW/4																
Township 34 North, Range 1 East																
Section 12: NW/4																

Table 1

Partner Acreage Report

Tract Id	SU/Cou	Sub-Tract Id	Gross Total Net Total	Gross Undev. Net Undeveloped	Gross Developed Net Developed	Gross HBP Net HBP	W.I. Deck Id	Working Int.	PARTNER SHARE		Gross HBP Net HBP
									Gross Acres Net Acres	Gross Undev. Net Undev.	
MT253	25	101	160.000000	160.000000	0.000000	0.000000	JIB	0.166666666	26.6666665	26.6666665	0.000000
MT254	25	101	160.000000	160.000000	0.000000	0.000000	JIB	0.166666666	1.6666666	1.6666666	0.000000
LEASE: BSO-146C - Beverly Haas, a married woman dealing in her sole - T34N-R01E-01											
Township 34 North, Range 1 East											
Section 1: SW/4											
Township 34 North, Range 1 East											
Section 12: NW/4											
MT253	25	101	160.000000	160.000000	0.000000	0.000000	JIB	0.166666666	26.6666665	26.6666665	0.000000
MT254	25	101	20.000000	20.000000	0.000000	0.000000	JIB	0.166666666	3.3333333	3.3333333	0.000000
LEASE: BSO-243 - Steven E. Christian and Doreen M. Christian, husba - T36N-R02E-13											
Township 36 North, Range 2 East											
Section 13: NE/4, N/2S/2											
Township 36 North, Range 2 East											
Section 14: NW/4NW/4, S/2NW/4											
Township 36 North, Range 2 East											
Section 15: N/2NW/4, SW/4NW/4											
Township 36 North, Range 2 East											
Section 23: SE/4NW/4, W/2SW/4											
Township 36 North, Range 3 East											
Section 7: Lots 3(32.26), 4(32.29)											
Township 36 North, Range 3 East											
Section 17: E/2NE/4, SW/4NE/4, S/2NW/4											
Township 36 North, Range 3 East											

Table 1

Partner Acreage Report

Tract Id	SIVCou	Sub-Tract Id	Gross Total Net Total	Gross Undev. Net Undeveloped	Gross Developed Net Developed	Gross HBP Net HBP	W.I. Deck Id	Working Int.	PARTNER SHARE		Gross Dev. Net Dev.	Gross HBP Net HBP
									Gross Acres Net Acres	Gross Undev. Net Undev.		
Section 18: Lots 1(32.34), 2(32.42), 3(32.50), 4(32.58), 7(27.02), 8(33.74), 9(28.53), 10(28.11), 12(0.23), S/2NE1/4, E/2NW1/4												
MT141	25	101 100	320.000000 320.000000	320.000000 320.000000	0.000000 0.000000	0.000000 0.000000	JIB	0.166666666	53.3333331 53.3333331	53.3333331 53.3333331	0.000000 0.000000	0.000000 0.000000
MT142	25	101 100	120.000000 120.000000	120.000000 120.000000	0.000000 0.000000	0.000000 0.000000	JIB	0.166666666	19.9999999 19.9999999	19.9999999 19.9999999	0.000000 0.000000	0.000000 0.000000
MT143	25	101 100	120.000000 120.000000	120.000000 120.000000	0.000000 0.000000	0.000000 0.000000	JIB	0.166666666	19.9999999 19.9999999	19.9999999 19.9999999	0.000000 0.000000	0.000000 0.000000
MT144	25	101 100	120.000000 120.000000	120.000000 120.000000	0.000000 0.000000	0.000000 0.000000	JIB	0.166666666	19.9999999 19.9999999	19.9999999 19.9999999	0.000000 0.000000	0.000000 0.000000
MT145	25	101 100	64.550000 64.550000	64.550000 64.550000	0.000000 0.000000	0.000000 0.000000	JIB	0.166666666	10.7583332 10.7583332	10.7583332 10.7583332	0.000000 0.000000	0.000000 0.000000
MT146	25	101 100	200.000000 200.000000	200.000000 200.000000	0.000000 0.000000	0.000000 0.000000	JIB	0.166666666	33.3333332 33.3333332	33.3333332 33.3333332	0.000000 0.000000	0.000000 0.000000
MT147	25	101 100	407.470000 407.470000	407.470000 407.470000	0.000000 0.000000	0.000000 0.000000	JIB	0.166666666	67.9116663 67.9116663	67.9116663 67.9116663	0.000000 0.000000	0.000000 0.000000
LEASE: BSO-244 - Ryan K. Jensen, a married man dealing in his sole - T37N-R02E-30 Township 37 North, Range 2 East Section 30: N/2NE1/4, NE/4NW1/4												
MT148	25	101 100	120.000000 15.000000	120.000000 15.000000	0.000000 0.000000	0.000000 0.000000	JIB	0.333333334	40.000000 5.000000	40.000000 5.000000	0.000000 0.000000	0.000000 0.000000
LEASE: BSO-244A - Ronald J. Jensen, a married man dealing in his sol - T37N-R02E-30 Township 37 North, Range 2 East Section 30 N/2NE1/4, NE/4NW1/4												
MT148	25	101 100	120.000000 15.000000	120.000000 15.000000	0.000000 0.000000	0.000000 0.000000	JIB	0.333333334	40.000000 5.000000	40.000000 5.000000	0.000000 0.000000	0.000000 0.000000
LEASE: BSO-244B - Robin Nanini, aka Robin L. Nanini, a married woman - T37N-R02E-30 Township 37 North, Range 2 East Section 30 N/2NE1/4, NE/4NW1/4												
MT148	25	101 100	120.000000 15.000000	120.000000 15.000000	0.000000 0.000000	0.000000 0.000000	JIB	0.333333334	40.000000 5.000000	40.000000 5.000000	0.000000 0.000000	0.000000 0.000000

Table 1

Partner Acreage Report

Tract Id	Sit/Cou	Sub-Tract Id	Gross Total		Gross Undev.		Gross Developed		Gross HBP		Working Int.	PARTNER SHARE		Gross HBP		
			Net Total	Net Undeveloped	Net Undeveloped	Net Developed	Net HBP	Net HBP	Gross Acres	Net Undev.		Gross Undev.	Net Undev.	Gross Dev.	Net Dev.	
LEASE: BSO-246 - Patricia J. Fowler and Edward A. Fowler or Patricia - T34N-R02E-07																
Township 34 North, Range 2 East																
Section 7: E/2																
MT285	25	101	100	320.000000	320.000000	320.000000	0.000000	0.000000	0.000000	0.000000	JIB	0.16666666	53.333333	53.333333	0.000000	0.000000
LEASE: BSO-249 - Carolyn Deuble Crowley, a married woman dealing in - T34N-R01W-17																
Township 34 North, Range 1 West																
Section 17: N/2NW/4, SE/4NW/4																
Township 34 North, Range 1 West																
Section 18: NE/4																
MT436	25	101	100	120.000000	120.000000	0.000000	0.000000	0.000000	0.000000	JIB	0.33333334	40.000000	40.000000	0.000000	0.000000	
MT437	25	101	100	160.000000	160.000000	0.000000	0.000000	0.000000	0.000000	JIB	0.33333334	53.333334	53.333334	0.000000	0.000000	
LEASE: BSO-249A - John H. Deuble, a married man dealing in his sole - T34N-R01W-17																
Township 34 North, Range 1 West																
Section 17: N/2NW/4, SE/4NW/4																
Township 34 North, Range 1 West																
Section 18: NE/4																
MT436	25	101	100	120.000000	120.000000	0.000000	0.000000	0.000000	0.000000	JIB	0.33333334	40.000000	40.000000	0.000000	0.000000	
MT437	25	101	100	160.000000	160.000000	0.000000	0.000000	0.000000	0.000000	JIB	0.33333334	53.333334	53.333334	0.000000	0.000000	
LEASE: BSO-250 - Johansen Farms Inc., a Montana Corporation - T34N-R01E-19																
Township 34 North, Range 1 East																
Section 19: Lots 1(35.89), 2(35.98), 3(36.08), 4(36.17), E/2W/2																
MT438	25	101	100	304.120000	304.120000	0.000000	0.000000	0.000000	0.000000	JIB	0.16666666	50.686664	50.686664	0.000000	0.000000	
												10.137332	10.137332	0.000000	0.000000	

Table 1

Partner Acreage Report

Tract Id	S/Cou	Sub-Tract Id	Gross Total		Gross Undev.		Gross Developed		Gross HBP		Working Int.	PARTNER SHARE		Gross HBP	
			Net Total	Net Undeveloped	Net Undeveloped	Net Developed	Net HBP	Net HBP	Gross Acres	Net Undev.		Gross Undev.	Net Undev.	Gross Dev.	Net Dev.
LEASE: BSO-252 - Richard M. Nichols, aka Col. Richard M. Nichols, a - T36N-R01W-01															
Township 36 North, Range 1 West															
Section 1: S/2NW/4, SW/4															
Township 36 North, Range 1 West															
Section 12: W/2NE/4, NW/4															
MT462	25	101	100	240.000000	240.000000	0.000000	0.000000	0.000000	0.000000	JIB	0.16666666	39.999998	39.999998	0.000000	0.000000
MT463	25	101	100	240.000000	240.000000	0.000000	0.000000	0.000000	0.000000	JIB	0.16666666	39.999998	39.999998	0.000000	0.000000
LEASE: BSO-254 - William A. Mavly, a married man dealing in his so - T35N-R02W-34															
Township 35 North, Range 2 West															
Section 34: NW/4 less and except an 8.2 acre tract of land owned by the State of Montana for the use and benefit of its State Highway Commission and more particularly described in book 86, page 285.															
MT466	25	101	100	151.800000	151.800000	0.000000	0.000000	0.000000	0.000000	JIB	0.33333334	50.600001	50.600001	0.000000	0.000000
LEASE: BSO-255 - Robert P. Berkeley, Jr., a married man dealing in hi - T34N-R01E-15															
Township 34 North, Range 1 East															
Section 15: SW/4															
Township 34 North, Range 1 East															
Section 22: NW/4															
Township 34 North, Range 1 East															
Section 23: N/2															
Township 34 North, Range 1 East															
Section 24: NE/4															
MT469	25	101	100	160.000000	160.000000	0.000000	0.000000	0.000000	0.000000	JIB	0.16666666	26.666665	26.666665	0.000000	0.000000
MT470	25	101	100	160.000000	160.000000	0.000000	0.000000	0.000000	0.000000	JIB	0.16666666	1.481481	1.481481	0.000000	0.000000
MT471	25	101	100	320.000000	320.000000	0.000000	0.000000	0.000000	0.000000	JIB	0.16666666	26.666665	26.666665	0.000000	0.000000
				13.333331	13.333331	0.000000	0.000000	0.000000	0.000000	JIB	0.16666666	53.333331	53.333331	0.000000	0.000000
												2.222221	2.222221	0.000000	0.000000

Table 1

Partner Acreage Report

Tract Id	S/Cou	Sub-Tract Id	Gross Total Net Total	Gross Undev. Net Undeveloped	Gross Developed Net Developed	Gross HBP Net HBP	W.I. Deck Id	Working Int.	PARTNER SHARE		Gross HBP Net HBP	
									Gross Acres Net Acres	Gross Undev. Net Undev.		
MT472	25	101	160.000000 6.666665	160.000000 6.666665	0.000000 0.000000	0.000000 0.000000	JIB	0.16666666	26.666665 1.111110	26.666665 1.111110	0.000000 0.000000	
LEASE: BSO-255A - James S. Archer, a married man dealing in his sole - T34N-R01E-15												
Township 34 North, Range 1 East												
Section 15: SW/4												
Township 34 North, Range 1 East												
Section 22: NW/4												
Township 34 North, Range 1 East												
Section 23: N/2												
Township 34 North, Range 1 East												
Section 24: NE/4												
MT469	25	101	160.000000 8.888888	160.000000 8.888888	0.000000 0.000000	0.000000 0.000000	JIB	0.16666666	26.666665 1.481481	26.666665 1.481481	0.000000 0.000000	
MT470	25	101	160.000000 8.888888	160.000000 8.888888	0.000000 0.000000	0.000000 0.000000	JIB	0.16666666	26.666665 1.481481	26.666665 1.481481	0.000000 0.000000	
MT471	25	101	320.000000 13.333331	320.000000 13.333331	0.000000 0.000000	0.000000 0.000000	JIB	0.16666666	53.333331 2.222221	53.333331 2.222221	0.000000 0.000000	
MT472	25	101	160.000000 6.666665	160.000000 6.666665	0.000000 0.000000	0.000000 0.000000	JIB	0.16666666	26.666665 1.111110	26.666665 1.111110	0.000000 0.000000	
LEASE: BSO-255B - Anne K. Shule, a widow and as sole heir of Preston - T34N-R01E-15												
Township 34 North, Range 1 East												
Section 15: SW/4												
Township 34 North, Range 1 East												
Section 22: NW/4												
Township 34 North, Range 1 East												
Section 23: N/2												
Township 34 North, Range 1 East												
Section 24: NE/4												

Table 1

Partner Acreage Report

Tract Id	Sit/Cou	Sub-Tract Id	Gross Total		Gross Undev.		Gross Developed		Gross HBP		W.J. Deck Id	Working Int.	PARTNER SHARE		Gross HBP	
			Net Total	Net Undeveloped	Net Undeveloped	Net Developed	Net HBP	Net Undev.	Net Acres	Gross Undev.			Net Undev.	Gross Dev.	Net Dev.	
MT469	25	101	160.000000	160.000000	8.888888	8.888888	0.000000	0.000000	0.000000	0.000000	JIB	0.166666666	26.666665	26.666665	0.000000	0.000000
MT470	25	101	160.000000	160.000000	8.888888	8.888888	0.000000	0.000000	0.000000	0.000000	JIB	0.166666666	26.666665	26.666665	0.000000	0.000000
MT471	25	101	320.000000	320.000000	13.333331	13.333331	0.000000	0.000000	0.000000	0.000000	JIB	0.166666666	53.333331	53.333331	0.000000	0.000000
MT472	25	101	160.000000	160.000000	6.666665	6.666665	0.000000	0.000000	0.000000	0.000000	JIB	0.166666666	26.666665	26.666665	0.000000	0.000000

LEASE: BSO-255C - George W. Boutell, a single man and as an heir of - T34N-R01E-15

Township 34 North, Range 1 East
Section 15: SW/4

Township 34 North, Range 1 East
Section 22: NW/4

Township 34 North, Range 1 East
Section 23: N/2

Township 34 North, Range 1 East
Section 24: NE/4

MT469	25	101	160.000000	160.000000	4.450000	4.450000	0.000000	0.000000	0.000000	0.000000	JIB	0.166666666	26.666665	26.666665	0.000000	0.000000
MT470	25	101	160.000000	160.000000	4.450000	4.450000	0.000000	0.000000	0.000000	0.000000	JIB	0.166666666	26.666665	26.666665	0.000000	0.000000
MT471	25	101	320.000000	320.000000	6.670000	6.670000	0.000000	0.000000	0.000000	0.000000	JIB	0.166666666	53.333331	53.333331	0.000000	0.000000
MT472	25	101	160.000000	160.000000	3.340000	3.340000	0.000000	0.000000	0.000000	0.000000	JIB	0.166666666	26.666665	26.666665	0.000000	0.000000

LEASE: BSO-255D - William T. Boutell, Jr., fka William T. Boutell, I - T34N-R01E-15

Township 34 North, Range 1 East
Section 15: SW/4

Township 34 North, Range 1 East

Table 1

Partner Acreage Report

Tract Id	S/Cou	Sub-Tract Id	Gross Total Net Total	Gross Undev. Net Undeveloped	Gross Developed Net Developed	Gross HBP Net HBP	W.I. Deck Id	Working Int.	PARTNER SHARE		Gross Dev. Net Dev.	Gross HBP Net HBP
									Gross Acres Net Acres	Gross Undev. Net Undev.		
Section 22: NW/4												
Township 34 North, Range 1 East												
Section 23: N/2												
Township 34 North, Range 1 East												
Section 24: NE/4												
MT469	25	101	160.000000	160.000000	0.000000	0.000000	JIB	0.16666666	26.666665	26.666665	0.000000	0.000000
			4.450000	4.450000	0.000000	0.000000			0.741666	0.741666	0.000000	0.000000
MT470	25	101	160.000000	160.000000	0.000000	0.000000	JIB	0.16666666	26.666665	26.666665	0.000000	0.000000
			4.450000	4.450000	0.000000	0.000000			0.741666	0.741666	0.000000	0.000000
MT471	25	101	320.000000	320.000000	0.000000	0.000000	JIB	0.16666666	53.333331	53.333331	0.000000	0.000000
			6.670000	6.670000	0.000000	0.000000			1.111666	1.111666	0.000000	0.000000
MT472	25	101	160.000000	160.000000	0.000000	0.000000	JIB	0.16666666	26.666665	26.666665	0.000000	0.000000
			3.340000	3.340000	0.000000	0.000000			0.556666	0.556666	0.000000	0.000000
LEASE: BSO-256 - Kenneth J. Koenig, a widower - T35N-R01E-32												
Township 35 North, Range 1 East												
Section 32: S2NE/4, NE/4NE/4, SE/4NW/4												
Township 35 North, Range 1 East												
Section 33: NW/4												
MT361	25	101	160.000000	160.000000	0.000000	0.000000	JIB	0.16666666	26.666665	26.666665	0.000000	0.000000
			160.000000	160.000000	0.000000	0.000000			26.666665	26.666665	0.000000	0.000000
MT362	25	101	160.000000	160.000000	0.000000	0.000000	JIB	0.16666666	26.666665	26.666665	0.000000	0.000000
			160.000000	160.000000	0.000000	0.000000			26.666665	26.666665	0.000000	0.000000
LEASE: BSO-257 - Marshall and Ilisley Trust Company N.A., as Trustee - T34N-R01E-11												
Township 34 North, Range 1 East												
Section 11: E/2												
MT473	25	101	320.000000	320.000000	0.000000	0.000000	JIB	0.16666666	53.333331	53.333331	0.000000	0.000000
			320.000000	320.000000	0.000000	0.000000			53.333331	53.333331	0.000000	0.000000

(osacbpwe.fx)

Version

Grand Totals - Gross:

Grand Totals - Net:

4951.370000

4551.370000

2148.370000

1908.370000

40918.678200

33483.891099

43067.048200

35392.261099

812.428313

750.561649

318.061655

279.128324

7889.844526

6311.403225

8207.906182

6590.531550

Show all records where Owner Id equals digsk00003.