

Sierra Grande Minerals Inc.

Management Discussion and Analysis

For the Nine months ended September 30, 2024

SIERRA GRANDE MINERALS INC.
MANAGEMENT DISCUSSION AND ANALYSIS
Nine months ended September 30, 2024

For further information on the Company, reference should be made to its public filings on SEDAR+ at www.sedarplus.ca. Information is also available on the Company's website at www.sierragrande.ca. This Management's Discussion and Analysis ("MD&A") should be read in conjunction with the condensed consolidated interim financial statements for the nine months ended September 30, 2024 and the audited consolidated financial statements for the year ended December 31, 2023, and related notes thereto which have been prepared in accordance with IFRS Accounting Standards as issued by the International Accounting Standards Board ("IFRS Accounting Standards"). The MD&A contains certain forward looking statements, please review the disclaimers that are provided on the last page of the report.

Background

Sierra Grande Minerals Inc. (the "Company" or "Sierra") was incorporated under the laws of the province of Ontario on November 17, 1994. On June 19, 2009, the Company completed a continuance of business from Ontario to British Columbia. The Company's common shares are listed on the Canadian Securities Exchange ("CSE") under the symbol "SGRO" as well as on the Berlin and Frankfurt stock exchanges in Germany under the symbol "F91Q". Commencing June 18, 2021, the Company's shares began to trade on the OTCQB Venture Market ("OTCQB") in the United States under the symbol "SIERF".

The Company's principal business is acquisition and development of resource properties with merits.

The head office, registered address, principal address and records office of the Company are located at Suite 210, 9648 128 Street, Surrey, B.C. Canada V3T 2X9.

The following discussion and analysis should be read in conjunction with the Company's condensed consolidated interim financial statements for the nine months ended September 30, 2024 and the audited consolidated financial statements for the year ended December 31, 2023. All monetary amounts, unless otherwise indicated, are expressed in Canadian dollars. Additional information relating to the Company and other regulatory filings can be found on the SEDAR+ website at www.sedarplus.ca.

This MD&A is dated November 29, 2024.

Forward-Looking Statements

Forward looking statements are statements that are not historical facts and are generally, but not always identified by the words "expects", "plans", "anticipates", "believes", "intends", "estimates", "projects", "potential", "interprets" and similar expressions, or that events or conditions "will", "may", "could" or "should" occur. The information contained herein may contain forward-looking statements including expectations of future production, cash flows or earnings. These statements are based on current expectations that involve a number of risks and uncertainties which could cause actual results to differ from those anticipated. Factors that could cause the actual results to differ materially from those in forward-looking statements, but are not limited to: risk associated with the oil and gas industry (e.g. operational risks in development, exploration and production; delays or changes in plans with respect to exploration or development projects or capital expenditures; the uncertainty of reserves estimates; the uncertainty of estimates and projections relating to production, costs and expenses, and health, safety and environmental risks), commodity price, price and exchange rate fluctuation and uncertainties resulting from potential delays or changes in plans with respect to exploration or development projects or capital expenditures.

SIERRA GRANDE MINERALS INC.
MANAGEMENT DISCUSSION AND ANALYSIS
Nine months ended September 30, 2024

Although management believes that the expectations represented by such forward-looking statements are reasonable, there is significant risk that the forward-looking statements may not be achieved, and the underlying assumptions thereto will not prove to be accurate.

Forward-looking statements made in this management discussion include, but not limited to:

1. Statements concerning Sierra's primary business activities;
2. Sierra's intention to seek and acquire additional mineral properties with merits.

Corporate update

On February 27, 2023, The Company completed a non-brokered private placement with issuance of 4,916,667 units for gross proceeds of \$295,000 and settled \$5,444 (USD4,000) in debt through the issuance of 83,333 units with a deemed fair market value of \$6,667. Each unit consists of one common share in the equity of the company and one common share purchase warrant. Each warrant entitles the holder to purchase one additional common share of the company at a price of eight cents per common share, expiring on February 27, 2025. As no premium was paid for the units the warrants were valued at \$Nil based on the residual valuation method.

The Company's subsidiary Minera Grenville S.A.C. was named as a defendant of four administrative claims for \$33,000 (Peru SOLES 103,956). The Company has presented the required defense to dismiss these claims. The financial impacts to the Company are not determinable and the Company has not accrued any expenditure or liability as of the date of this report.

Mineral properties

During the year ended December 31, 2021, the Company entered into definitive mining lease-purchase agreements with Primus Resources (the "Primus Agreements"), a Nevada-based privately held company, whereby the Company has secured the rights to earn an 100% interest in 3 epithermal gold, silver, copper and molybdenum properties (Glitra/Sat; B&C Springs/Mildred; Betty East) in the State of Nevada, U.S.A (collectively the "Properties").

The terms of the lease payments and work commitments of the Glitra/Sat project are as follows:

Glitra/Sat Property			
Term	Cash Payments USD\$	Work Commitments USD\$	Share Payments
At closing (paid)	\$40,000	-	-
March 1, 2022 (paid)	\$40,000	-	-
March 1, 2023 (paid)	\$50,000	\$75,000	100,000 shares
March 1, 2024 (paid)	The greater of \$50,000 and 29 ounces of gold	\$150,000	100,000 shares
March 1, 2025	The greater of \$50,000 and 29 ounces of gold	\$225,000	100,000 shares
March 1, 2026	The greater of \$50,000 and 29 ounces of gold	\$350,000	100,000 shares

SIERRA GRANDE MINERALS INC.
MANAGEMENT DISCUSSION AND ANALYSIS
Nine months ended September 30, 2024

The Company has an option to buy this property with the payments of all the annual lease payments plus the greater of USD\$395,000 and 232 ounces of gold.

As of the date of this MDA the Company has not issued the share payments and is currently working on an amended earn in option agreement with the Optionor to amend certain terms of the agreement. During this period the Company has made its cash payments and remains in good standing with the option agreement.

The terms of the lease payments and work commitments of the B&C Springs/Mildred project is as follows:

B&C Springs/Mildred Property			
Term	Cash Payments USDS	Work Commitments USDS	Share Payments
At closing (paid)	\$15,000	-	-
March 1, 2022 (paid)	\$20,000	-	-
March 1, 2023 (paid)	\$30,000	\$75,000	100,000 shares
March 1, 2024 (paid)	The greater of \$40,000 and 24 ounces of gold	\$150,000	100,000 shares
March 1, 2025	The greater of \$50,000 and 29 ounces of gold	\$225,000	100,000 shares
March 1, 2026	The greater of \$50,000 and 29 ounces of gold	\$350,000	100,000 shares

The Company has an option to buy this property with the payments of all the annual lease payments plus the greater of USD\$295,000 and 174 ounces of gold.

As of the date of this MDA the Company has not issued the share payments and is currently working on an amended earn in option agreement with the Optionor to amend certain terms of the agreement. During this period the Company has made its cash payments and remains in good standing with the option agreement.

The terms of the lease payments and work commitments of the Betty East project are as follows:

Betty East Property			
Term	Cash Payments USDS	Work Commitments USDS	Share Payments
At closing (paid)	\$20,000	-	-
March 1, 2022 (paid)	\$25,000	-	-
March 1, 2023 (paid)	\$30,000	\$75,000	100,000 shares
March 1, 2024 (paid)	The greater of \$50,000 and 29 ounces of gold	\$150,000	100,000 shares
March 1, 2025	The greater of \$50,000 and 29 ounces of gold	\$225,000	100,000 shares
March 1, 2026	The greater of \$50,000 and 29 ounces of gold	\$350,000	100,000 shares

SIERRA GRANDE MINERALS INC.
MANAGEMENT DISCUSSION AND ANALYSIS
Nine months ended September 30, 2024

The Company has an option to buy this property with the payments of all the annual lease payments plus the greater of USD\$275,000 and 162 ounces of gold.

As of the date of this MDA the Company has not issued the share payments and is currently working on an amended earn in option agreement with the Optionor to amend certain terms of the agreement. During this period the Company has made its cash payments and remains in good standing with the option agreement.

SIERRA GRANDE MINERALS INC.
MANAGEMENT DISCUSSION AND ANALYSIS
Nine months ended September 30, 2024

Primus Properties - Description

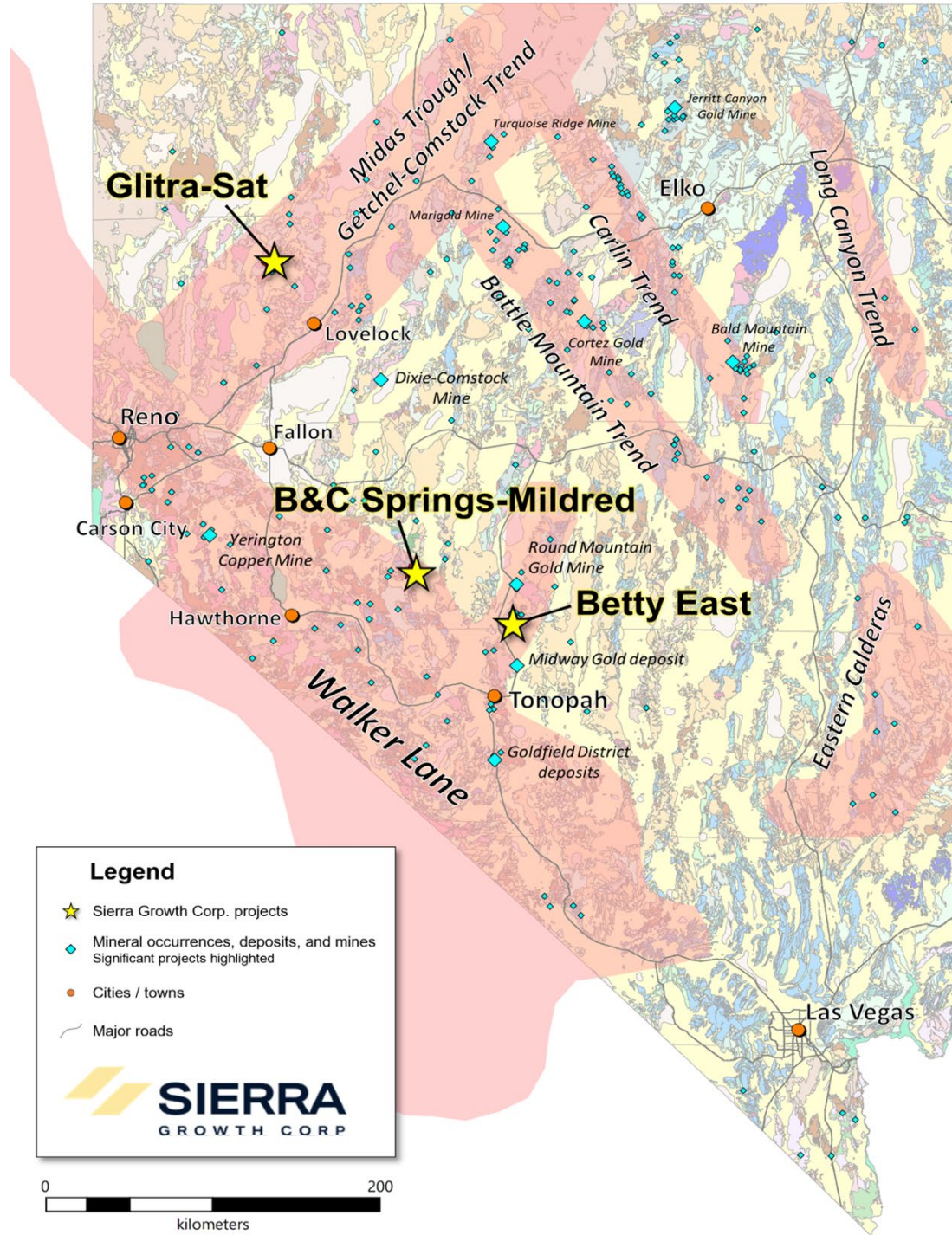


Figure 1. Simplified geologic map of Nevada, showing broad mineralized corridors and locations of the Betty East, Glitra-Sat and Mildred-B&C Springs properties

SIERRA GRANDE MINERALS INC.
MANAGEMENT DISCUSSION AND ANALYSIS
Nine months ended September 30, 2024

Mildred/ B&C Springs

The Mildred claims, the historical Mildred mine, and the nearby B&C Springs property are located in the southern Paradise Range in west-central Nevada, within the Fairplay Mining District, which is readily accessible from nearby Hawthorne or Tonopah via highways and well-maintained gravel roads and off-road trails (Figure 1). Exploration at B&C Springs was previously focused on skarn and vein occurrences hosting molybdenum, copper, and silver, which were interpreted to be genetically associated with Triassic-Jurassic intrusions such as the nearby Buzzard Peak stock. Historical workings are found throughout the property, and on the contiguous Mildred property, where precious metals mineralization within the host sedimentary rocks is associated with calc-silicate horizons, fault zones and dikes of probable Tertiary age. The possibility that a secondary epithermal event has overprinted an earlier porphyry/skarn mineralizing event will be evaluated. The area encompassed by the B&C Springs-Mildred properties total approximately 1,450 acres.

Glitra/Sat

The Glitra/Sat claims are located in Pershing County, western Nevada, in the Seven Troughs Range of the Farrell Mining District, which hosts numerous historical and modern-day mineral occurrences and deposits (Figure 1). The properties are 45 kilometers northwest of Lovelock, a fully serviced town on Interstate 80, and are accessible via paved and well-maintained gravel and dirt roads. Both the Glitra and Sat properties have seen historical small-scale mining and limited amounts of modern-day exploration, most recently in the 1980's and early 1990's, when trenching and limited shallow RC drilling was undertaken. Several known gold showings with attractive epithermal-style alteration and veining occur on the property. They are commonly associated with felsic dikes and lie along a mineralized trend that links the historical Seven Troughs mining area immediately south (Timberline Resources), with the Wildcat property (Waterton Global Resource Management) immediately north. At Sat, an extensive and high-tenor gold-in-soil geochemical anomaly lies along a sub-parallel trend that was outlined by previous operators and is similarly associated with epithermal-style alteration and local veining. The total area encompassed by the Glitra and Sat properties equals roughly 1,130 acres.

Betty East

The Betty East property is located in west-central Nevada, approximately 40 miles north of the town of Tonopah, in Nye County. The claims, which cover 403 acres, lie at the southern end of the Manhattan Mining District, immediately north of Liberty Gold's Baxter Springs project and less than 20 km south of the world class Round Mountain Gold Mine. Work on the Betty East property by Nevada Goldfields in the 1990's outlined a north-northwest trending gold-mineralized zone on the core claims that coincides with a number of historical pits, shallow shafts, and adits and this trend will be the initial focus for the Betty East exploration program. The property is readily accessible from Tonopah via state highway 376 and a network of well-maintained gravel roads.

Exploration Update

During the year ended December 31, 2023, Sierra completed certain exploration activities at its 3 properties, Glitra/Sat, Betty East, and B&C Springs, located in the northern part of the Walker Lane trend of west-central Nevada. The focus of the work was the completion of two drone-based aeromagnetic surveys along with soil and rock geochemical data and preliminary geologic mapping to further highlight exploration potential at Glitra-Sat and B&C Springs properties, respectively.

SIERRA GRANDE MINERALS INC.
MANAGEMENT DISCUSSION AND ANALYSIS
Nine months ended September 30, 2024

Glitra/Sat Results

The Glitra/Sat properties are contiguous with Millennial Precious Metals Wildcat Project which hosts a 43-101 compliant inferred mineral resource and they lie a few kms north of Timberline Resources Seven Troughs Project.

The drone-mag survey at Glitra-Sat featured 50 metre line spacings along NE-SW azimuths, with a total surveyed area of 693 line kilometres.

Results of the drone-mag survey at Sat showed an excellent correlation between an aeromagnetic low and an existing 600 metre long north-northeast to northeast trending gold-in-soil geochemical anomaly returning gold results ranging up to 904 ppb. Recently a short geological traverse confirmed that the anomaly coincides with brecciated and commonly limonitic felsic rocks that appear to cut mafic volcanic rocks of probable Tertiary age. The felsic rocks and their immediate wall rocks have been altered and mineralized by hydrothermal activity that have “bleached” their hosts and which likely generated the geochemical anomalies. Other nearby but less well-defined geochemical anomalies on the Sat property also appear to be associated with similar magnetic lows, and while generally poorly exposed, these adjacent areas also show a close association with similarly clay, pyrite and silica altered and brecciated rocks that are evident in float as well as in sparse local outcrop and subcrop.

The Glitra property is underlain by a diverse and generally older suite of host rocks with a different magnetic signature to that at Sat. However, the Glitra property shows a similarly close association between altered and mineralized rocks, precious metals enriched soil and rock geochemistry, and a strong and persistent north-northeast trending airborne magnetic low. The soil geochemical anomaly hosts a number of samples exceeding 1 g/t gold. The Glitra property also shows a number of intriguing subparallel linear magnetic features that remain to be investigated. The Company looks forward to investigating these features with geologic mapping, and rock and soil geochemical sampling, all as part of its 2023 exploration program.

SIERRA GRANDE MINERALS INC.
MANAGEMENT DISCUSSION AND ANALYSIS
 Nine months ended September 30, 2024

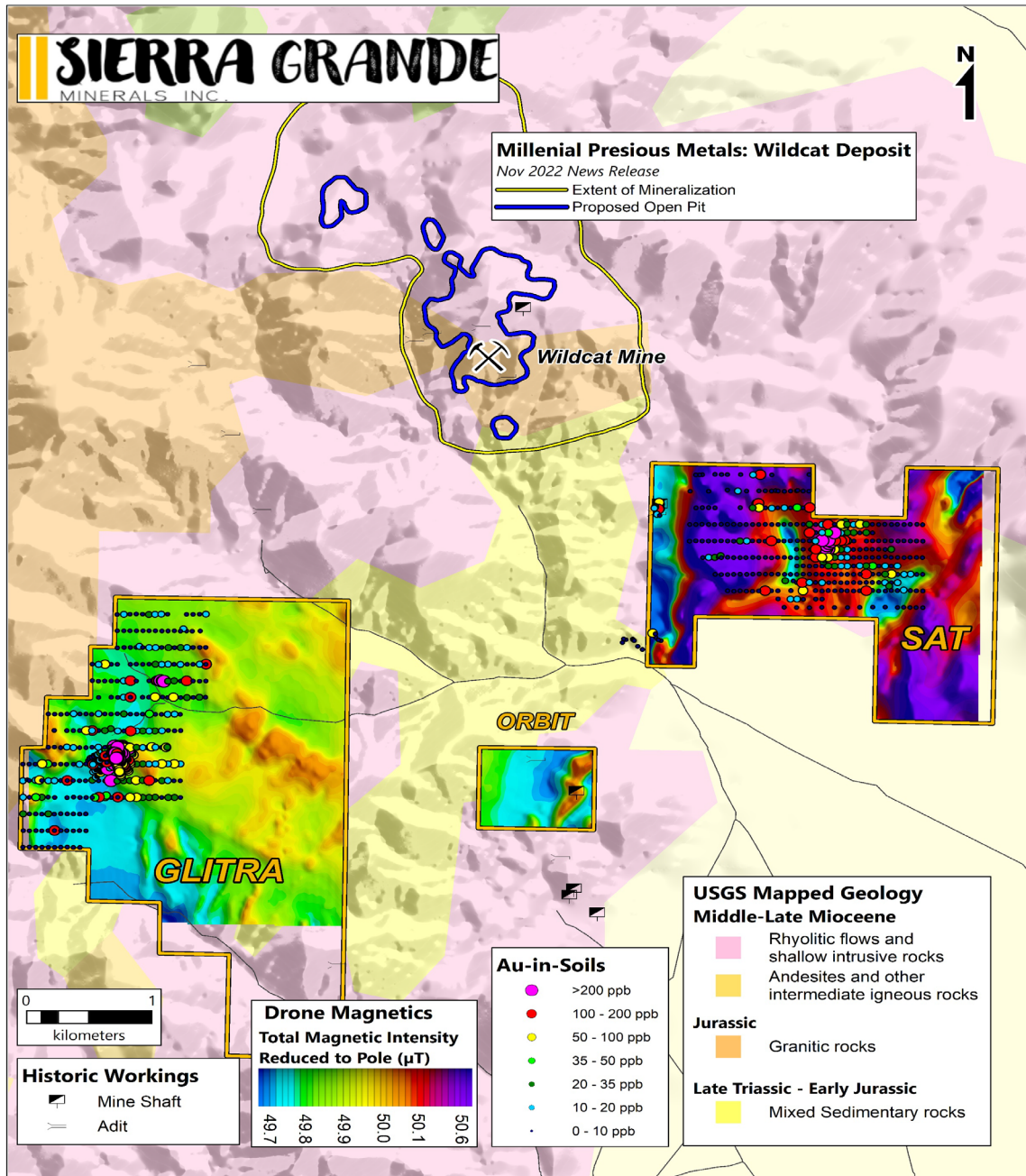


Figure 2 Glitra-Sat Plan View with Highlighted Soil Geochemistry and Magnetic Survey Data

SIERRA GRANDE MINERALS INC.
MANAGEMENT DISCUSSION AND ANALYSIS
Nine months ended September 30, 2024

B&C Springs-Mildred Results

The B&C Springs property mirrors the potential of the Fairplay District in that it has both base (copper-silver-molybdenum) and precious (gold-silver) metals potential. Much of the focus for previous work at B&C Springs, including a considerable amount of drilling, was on a Mo-Cu-Ag mineralized zone on the east side of the property. However, farther west, in the Mildred Mine area, numerous historical prospecting pits, adits and shallow shafts exist, and the soil geochemical response for gold and silver in that area confirms that there is potential for precious metals mineralization. Still farther west, across the area of the pediment, the Company's expanded property holdings about Almadex Minerals Ltd.'s Paradise Valley project, which has long seen exploration for precious metals. The historical work on either side of the pediment area hints at further potential for precious metals exploration beneath the shallow overburden of the upper part of the pediment, and that potential was further reinforced by the results of Sierra's recent staking-related prospecting program, in which grab samples returned values up to 150.5 g/t gold (see above and Image 1). In the vicinity of the Mildred Mine and toward the southwestern part of the property, where there are numerous historical prospect pits, adits and shallow shafts, the soil geochemical response for gold and silver confirms the potential of that area for precious metals mineralization. It also hints at further potential for precious metals, to the west beneath the shallow overburden of the pediment area, which is an area staked very recently by the Company.

The drone-mag survey at B&C Springs featured 50 metre line spacings along NE-SW azimuths, with a total surveyed area of 1,298 line kilometres.

The magnetic lineaments and magnetic relief, which commonly correlate with altered and potentially demagnetized host rocks on structures, also correlate closely with anomalous precious metals values outlined in the Company's 2020 geological evaluations, and in its 2021 soil and rock geochemical sampling. The results of the Company's present compilation work will be employed in 2023 to focus further geological mapping and geochemical sampling efforts, and to lay a foundation for ground geophysical surveys (for example, Controlled Source Audio Magneto-Telluric (CSAMT) and/or induced Polarization (IP) surveys). The aim is that these surveys will lead to drill-testing of targets which display the most attractive combination of geological, geochemical, and geophysical features.

The drone-mag surveys at B&CS covered the entirety of the property with flight lines spaced 50m apart and flown on lines perpendicular to known and/or interpreted stratigraphic, structural, mineralized and altered trends (see Figures 1-2; technical details for the survey are given below). The goal of the survey was to better outline and target altered and mineralized trends and allow the Company to trace the trends beneath areas that are partially to completely covered by overburden.

On the B&CS property there is extensive but generally thin overburden comprising the head of a broad pediment fan which obscures a large area separating precious metals showings to the west, on Almadex's Davis Gold Property, from showings to the east, in the Mildred Mine area, where the Company's earlier soil sampling work yielded a number of highly anomalous samples (News release dated August 31, 2021; See Figure 1). During Q1 of 2022, following the Company's recognition of the potential of the covered area, and after staking a large number of new claims, a short prospecting program yielded a number of high-grade grab samples, including those returning 17.35, 30.9 and 150.5 g/t Au. Furthermore, limited outcrop exposed in drainages lying within the bounds of the pediment area indicates that the overburden there is generally thin and that the rocks are altered along structures.

Now that the airborne magnetometer work is complete, the Company is contemplating next steps. These include plans for ground-based CSAMT (controlled source audio-magnetic telluric) and/or IP (Induced Polarization) geophysical surveys, but not until further mapping, prospecting, and sampling are undertaken.

SIERRA GRANDE MINERALS INC.
MANAGEMENT DISCUSSION AND ANALYSIS
Nine months ended September 30, 2024

The purpose of this follow-up work will be to closely define drill targets along trends showing the greatest potential to host economic mineralization.

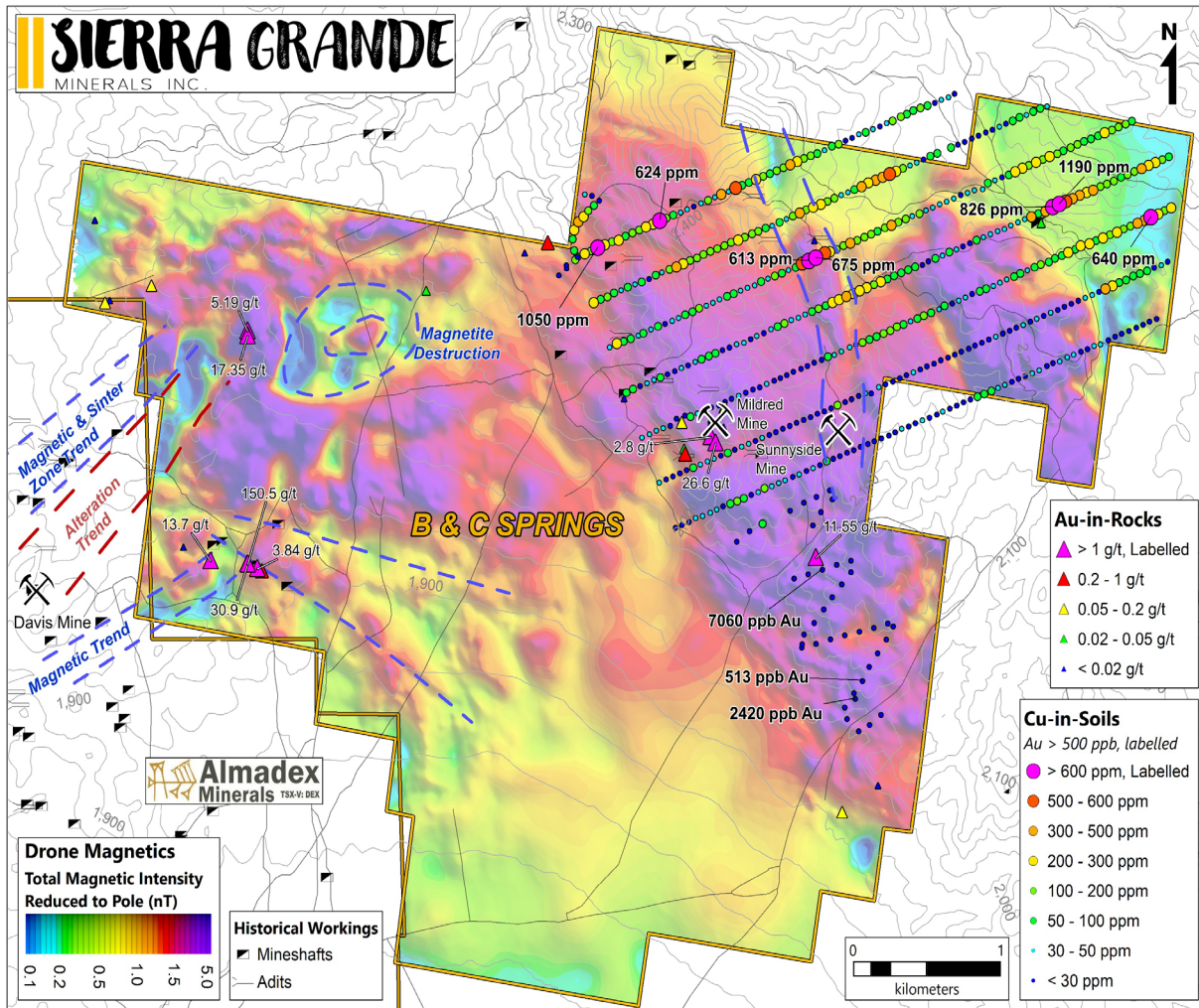


Figure 3. B&C Springs Magnetic survey data with Cu-in-soil geochemical results and Au grab sample results

Beatty East Results

The Betty/East claims, which cover 653 acres, lie at the southern end of the Manhattan Mining District, adjacent to and immediately north of Huntsman Exploration's/Liberty Gold's Baxter Springs project and less than 20 km south of the world class Round Mountain Gold Mine (see figure 4).

SIERRA GRANDE MINERALS INC.
MANAGEMENT DISCUSSION AND ANALYSIS
Nine months ended September 30, 2024

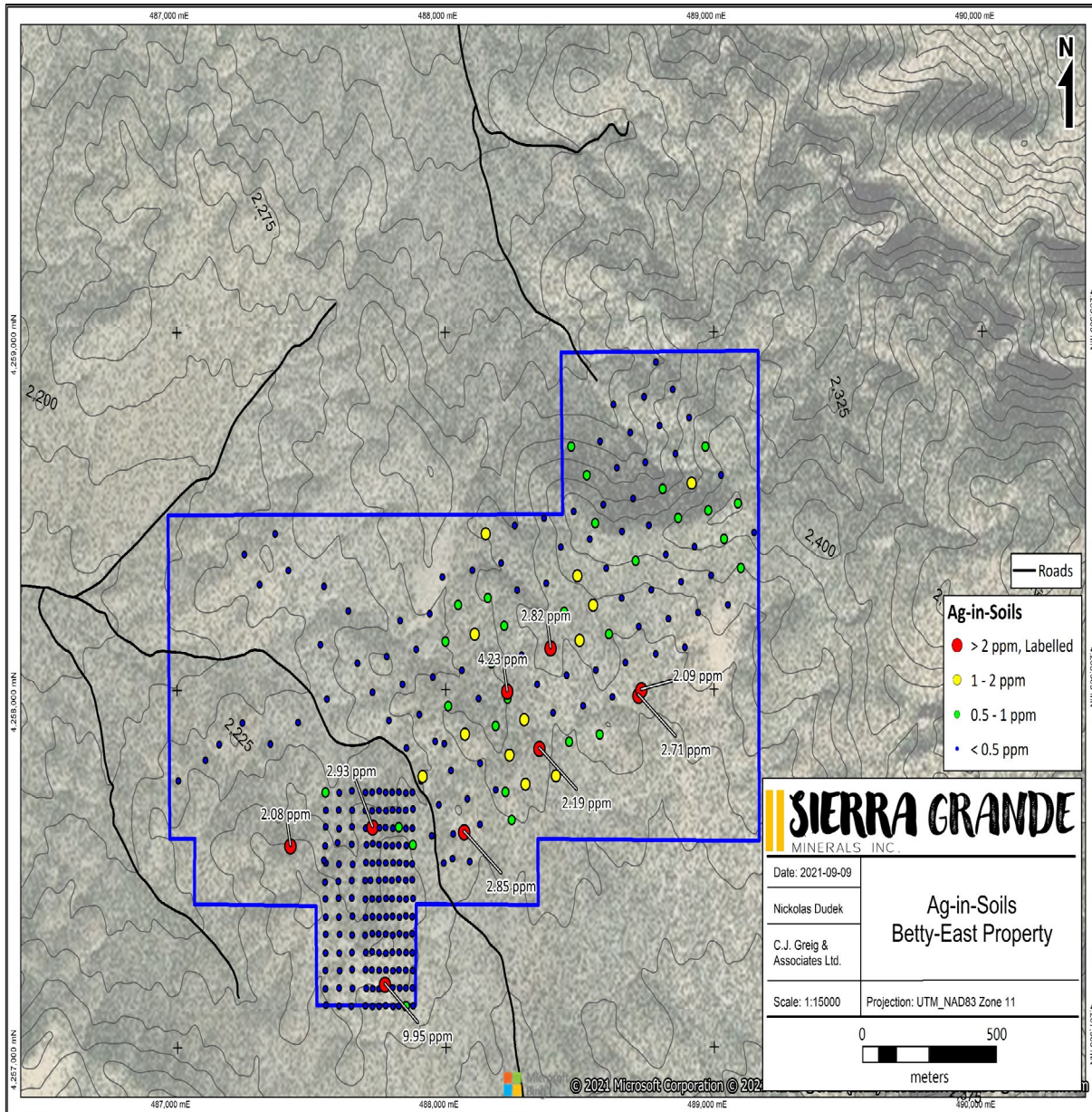


Figure 4. Betty East Regional Setting with Arsenic-in-soil results

Two prospective trends are apparent in the soil geochemical data. One, known as “The Knolls,” trends northerly, has been explored previously and displays a pronounced Au-As-Ag-Hg epithermal signature. The other is a newly-emerging and more extensive trend. It appears to trend east-northeastward from the Knolls, and displays an Ag-As-Sb-Hg-Mo (Zn-Cu-W) signature.

- The Knolls trend has locally very high gold-in-soil results, including values of 6270, 5060, 1185 and 690 ppb gold, within an envelope of values that are anomalous in gold and arsenic
- The newly emerging east-northeast trend is extensive (>1.5km long by up to 1km wide) and displays elements of both epithermal and intrusive-related signatures, with highly anomalous

SIERRA GRANDE MINERALS INC.
MANAGEMENT DISCUSSION AND ANALYSIS
Nine months ended September 30, 2024

As-Hg-Ag-Sb-Mo, along with locally elevated gold and consistently elevated Zn-Cu-W. This trend appears to merge with the Knolls anomaly in the southwest part of the property

Additional Staking at the Nevada Properties was Completed in 2021 and 2022

Upon receipt of the encouraging results from the Company's soil geochemical programs in Nevada, all three projects were expanded materially through additional claim-staking during the course of the late summer and early fall of 2021.

- At Glitra/Sat, 90 additional claims were staked to ensure that the anomalous trends identified by the soil geochemical program were sufficiently covered and buffered. The combined properties now total 1,130 acres.
- At B&C Springs 225 additional claims were staked. This expanded the property to the west and south west, in part to cover the encouraging Cu-Mo-Ag geochemical trend on the north, but also to cover the potential for precious metals mineralized zones between the historical workings around and to the south of the Mildred Mine where there are numerous historical prospect pits, adits and shallow shafts. Many of the new claims were staked to the west of this area, encompassing a pediment area covered by shallow overburden that lies north of the main B&C Springs access road. Initial prospecting efforts there and along the west side of the pediment area, along with numerous historical workings in that area and on the adjacent Almadex property suggest that there is excellent potential the remains to be explored on the new Sierra claims. The B&C Springs project now totals 4,607 acres.
- At Beatty East 28 additional claims were staked to cover the newly extensive and newly recognized east-northeast soil geochemical trend. The Beatty East Project now totals 653 acres.

Continuity of the Company's exploration and evaluation assets is as follow:

	Glitra/Sat	B&C Springs	Betty East	Total
	\$	\$	\$	\$
Balance, December 31, 2022	371,878	423,760	129,992	925,630
Acquisition – option payments	107,424	123,041	58,082	288,547
Field Expenses	2,635	2,728	2,728	8,092
Geophysical analysis	11,399	12,272	5,131	28,801
Surveying	-	5,810	-	5,810
Balance, December 31, 2023	\$493,336	\$567,611	\$195,933	\$1,256,880
Acquisition – option payments	104,806	169,461	9,260	283,527
Deferred exploration cost:				
Field Expenses	473	473	-	946
Geological Consulting	1,575	1,575	-	3,150
Geophysical analysis	-	293	-	293
Surveying	-	20,768	-	20,768
Balance September 30, 2024	\$600,190	\$760,181	\$205,193	\$1,565,564

SIERRA GRANDE MINERALS INC.
MANAGEMENT DISCUSSION AND ANALYSIS
Nine months ended September 30, 2024

Silveria Property

During the year ended December 31, 2020, the Company entered into an agreement with Consorcio De Ingenieros Ejecutores Mineros S.A., a private Peruvian company (“CIEMSA”) and sold its Silveria mining concessions located in Peru to CIEMSA.

On February 20, 2023, the Company entered into an amended agreement with CIEMSA. The original and amended terms of the option agreement are outlined as follows:

Option Agreement (Silveria)			
August 21, 2020 Original Agreement		February 20, 2023 Modified Agreement	
NSR 1% Amount	Date	NSR 1% Amount	Date
\$200,000	Upon Registration (Paid)	\$200,000	Credit from original agreement
\$100,000	12 months thereon	\$82,527	Upon Execution (paid)
\$450,000	24 months thereon	\$82,527	December 29, 2023 (paid)
\$250,000	36 months thereon	\$165,000	June 28, 2024
		\$165,108	December 30, 2024
		\$250,000	Court Confirmation (Peru)
\$1,000,000		\$945,162	

During the nine months ended September 30, 2024, the Company received USD332,500(CAD337,717) (2023 – USD35,000 (CAD47,873)) and recorded the amount as Other Income.

Summary of quarterly results

Quarter ended,	30-Sept-24	30-June-24	31-Mar-24	31-Dec-23
	\$	\$	\$	\$
Income (Loss) for the period	(72,895)	(23,064)	175,139	(126,033)
Income (Loss) per share	(0.00)	0.01	0.01	(0.00)
Quarter ended,	30-Sept-23	30-June-23	31-Mar-23	31-Dec-22
	\$	\$	\$	\$
Income (Loss) for the period	(56,474)	(109,959)	(82,589)	(127,375)
Loss per share	(0.00)	(0.00)	(0.00)	(0.00)

The Company’s quarterly historical results were not subject to seasonality. During the nine months ended September 30, 2024 the Company received USDNil (CADNil) in connection to the Silveria option agreement which led to an increase in net loss for the quarter. Operating expenses remain relatively constant between quarters and fluctuates primarily due irregular transactions such as loss on debt settlements, fluctuation in the valuation of marketable securities and timing for the Silveria option payments.

SIERRA GRANDE MINERALS INC.
MANAGEMENT DISCUSSION AND ANALYSIS
Nine months ended September 30, 2024

	Three months ended		Nine months ended	
	September 30,		September 30,	
			2024	2023
			\$	\$
Operating expenses				
Advertising and promotion	-	2,500	-	3,423
Filing and transfer fees	8,157	3,690	38,064	35,331
Foreign exchange loss (gain)	(5,498)	(657)	10,212	36
Management and consulting	64,252	47,800	225,791	223,540
Office and miscellaneous	7,732	9,215	33,064	32,924
Professional fees	5,377	(6,074)	78,061	9,293
	80,020	56,474	364,768	304,547
Other Income (expense)				
Interest income	82	-	805	3,875
Loss on debt settlement	-	-	-	(1,223)
Realized loss on marketable securities	(50)	-	(50)	-
Unrealized gain (loss) on marketable securities	7,093	-	(7,193)	-
Other income	-	-	450,386	52,873
Net income (loss) and comprehensive income (loss)	\$(72,895)	\$(56,474)	\$79,180	\$(249,022)
Basic and diluted loss per share	\$(0.00)	\$(0.00)	\$(0.00)	\$(0.01)
Total Assets	\$2,258,285	\$2,194,257	\$2,258,285	\$2,194,257

During the three months ended September 30, 2024, the Company had an increase in operating losses compared to the three months ended September 30, 2023. Primary drivers of this increase were increase filing fees in connection to hosting the Company's Annual General Meeting ("AGM"), increased management and consulting fees as activity has picked up during the year with additional analysis being performed on current and potential opportunities, increased professional fees in connection with hosting the Company's AGM where in the prior period there was a gain recorded due to the reversal of certain accruals. Offsetting these increases primarily relates to an increased gain from foreign exchange which fluctuates depending on market conditions. The Company had an increase in other income primarily due to the unrealized gain on marketable securities which it never held in the prior period. The unrealized gain/loss is based on market factors and can fluctuate depending on market conditions.

During the nine months ended September 30, 2024, the Company had a increase in operating losses compared to the prior period ending September 30, 2023. This increase primarily stemmed from an increase in professional fees in connection to the collection of the Silveria option payment and preparation of the Company's AGM. During the nine months ended September 30, 2024, the Company also had an increase in foreign exchange losses which is due to FX fluctuations between CAD and USD. During the period ended September 30, 2024, the Company had an increase other income which relates to payments received in connection the Silveria option agreement.

SIERRA GRANDE MINERALS INC.
MANAGEMENT DISCUSSION AND ANALYSIS
Nine months ended September 30, 2024

During the nine months ended September 30, 2024, the Company's cash balance decreased by \$306,028 which is mainly the result of investments made during the period that was offset by inflows of \$102,106 from operating activities and expenditures of \$308,684 in exploration activities.

Capital Resources and Liquidity

As of September 30, 2024, the Company believes its resources (cash - \$571,707; working capital - \$654,519) is adequate to finance its operations in the next twelve months. However, management realizes that the financial resources on hand may not be enough to achieve its long-term business goals. The Company has a history of securing financing when needed in the past but there is no guarantee that the Company can do the same in the future.

Future planned commitments relate to the Company continuing to make its option and Bureau of Land Management payments to ensure the claims held remain in good standing over the course of exploration. As at September 30, 2024, the Company had sufficient cash resources to meet the commitments due within 1 year.

Disclosure of Outstanding Share Data

As at September 30, 2024 and the reporting date of this MD&A, there are 29,311,215 common shares, 1,350,000 options and 18,585,999 warrants outstanding.

Related Party Transactions

Key management personnel include those persons having authority and responsibility for planning, directing and controlling the activities of the Company as a whole. The Company has determined that key management personnel consist of members of the Company's Board of Directors and corporate officers.

The Company enters into transactions with management, the CEO and CFO, to compensate them for their in managing the operations of the company. Additionally other members of the Company, such as directors, are compensated for their time for their involvement in the oversight of the Company. The Company has a management services agreement with a company with common management which provides office space, and back office and administrative support for day-to-day business operations.

During the nine months ended September 30, 2024, the Company was charged the following consulting fees by the Company's officers/ directors, and/or entities controlled by them:

	Nature	2024	2023
		\$	\$
Chief Executive Office	Consulting	124,600	70,118
Chief Financial Officer	Consulting	20,250	18,000
Former Chief Financial Officer	Consulting	-	12,900
Company related to Officers and Directors	Management services and office rent	53,238	110,279
Directors	Consulting	36,628	38,996
		<u>\$264,716</u>	<u>\$250,293</u>

SIERRA GRANDE MINERALS INC.
MANAGEMENT DISCUSSION AND ANALYSIS
Nine months ended September 30, 2024

During the nine months ended September 30, 2024, the Company issued Nil common shares (2023 – 83,333) to a director to settle outstanding debt of \$Nil (2023 - \$5,444 (USD4,000)) with a fair value of \$Nil (2023 - \$6,667) and recorded a loss on settlement of \$Nil (2023 - \$1,223).

As at September 30, 2024, there was an amount owing of \$10,280 (December 31, 2023 - \$2,388) due to related parties that was included in the Company’s trade payables and accrued liabilities.

As at September 30, 2024, there was an amount of \$Nil (December 31, 2023 - \$11,004) due from a related party that was included in the Company’s accounts receivables.

As of September 30, 2024, the note receivable from related parties is \$Nil (December 31, 2023 - \$Nil) (Note 9). During the nine months ended September 30, 2023, the Company received repayment of the loans in full plus accrued interest of \$3,875 and a loan fee of \$5,000 recorded in Other Income.

Proposed Transactions

The Company does not have any proposed transactions that are material to disclose.

Off Balance Sheet Arrangements

The Company does not have off balance sheet arrangements nor transactions.

Significant Accounting Policies

A full listing of the Company’s significant accounting policies is available in the consolidated financial statements and notes for the year ended December 31, 2023. The Company has not adopted new accounting policies since the last year ended December 31, 2023.

Controls and Procedures

Venture issuers are not required to include representations relating to the establishment and maintenance of disclosure controls and procedures (DC&P) and internal control over financial reporting (ICFR), as defined in National Instrument 52-109 Certification of Disclosure in Issuer’s Annual and Interim Filings (“NI 52-109”). In particular, the Company’s certifying officers are not making any representations relating to the establishment and maintenance of:

- i) controls and other procedures designed to provide reasonable assurance that information required to be disclosed by the Company in its annual filings, interim filings of other reports filed or submitted under securities legislation is recorded, processed, summarized and reported within the time periods specified in securities legislation; and
- ii) a process to provide reasonable assurance regarding the reliability of financial reporting and the preparation of financial statements for external purposes in accordance with the Company’s generally accepted accounting principles.

SIERRA GRANDE MINERALS INC.
MANAGEMENT DISCUSSION AND ANALYSIS
Nine months ended September 30, 2024

The Company's certifying officers are responsible for ensuring that processes are in place to provide them with sufficient knowledge to support the representations they make. Investors should be aware that inherent limitations on the ability of the Company are certifying officers to design and implement on a cost-effective basis.

Financial Risk Management

The Company is exposed in varying degrees to a variety of financial instrument related risks. The Board of Directors reviews and monitors the risk management processes, inclusive of documented investment policies, counterparty limits and controlling and reporting structures. The type of risk exposure and the way in which such exposure is managed is provided as follows:

Credit Risk

Credit risk is the risk that one party to a financial instrument will fail to discharge an obligation and cause the other party to incur a financial loss. The Company's primary exposure to credit risk is on its cash held in bank accounts. The majority of cash is deposited in bank accounts held with major banks in Canada and Peru. As most of the Company's cash is held by two banks, there is a concentration of credit risk. However, this risk is managed by using major banks that are high credit quality financial institutions as determined by rating agencies.

Liquidity Risk

Liquidity risk is the risk that the Company will not be able to meet its financial obligations as they fall due. The Company has a planning and budgeting process in place to help determine the funds required to support the Company's normal operating requirements on an ongoing basis. The Company ensures that there are sufficient holdings of cash and cash equivalents to meet its short-term exploration and evaluation requirements and anticipated operating cash flows.

Historically, the Company's sole source of funding has been the issuance of equity securities for cash, primarily through private placements. The Company's access to financing is always uncertain. There can be no assurance of continued access to significant equity funding.

Foreign Exchange Risk

Foreign currency risk is the risk that the fair values of future cash flows of a financial instrument will fluctuate because they are denominated in currencies that differ from the respective functional currency. The Company's Peruvian subsidiaries are exposed to currency risk as they incur expenditures that are denominated in US dollars and the Peruvian Soles, and their functional currency is the Canadian dollar. The Company does not hedge its exposure to fluctuations in foreign exchange rates.

Interest Rate Risk

Interest rate risk refers to the risk that fair values of future cash flows of a financial instrument will fluctuate due to changes in market interest rates. The Company does not have material financial assets or liabilities that are exposed to fluctuation of interest rate. As a result, the exposure to interest rate risk is not significant.

SIERRA GRANDE MINERALS INC.
MANAGEMENT DISCUSSION AND ANALYSIS
Nine months ended September 30, 2024

Classification of Financial Instruments

Financial assets and liabilities in the statement of financial position are as follows:

	Fair value measurement	Classification	September 30, 2024	December 31, 2023
			\$	\$
Financial assets:				
Accounts receivable		Amortized cost	28,807	29,911
Cash		Amortized cost	571,707	877,735
Investment in common shares of public companies	Level 1	FVTPL	92,207	-
Loan receivable		Amortized Cost	-	-
Financial liabilities:				
Trade payables and accrued liabilities		Amortized cost	38,202	23,623

Risks Disclosure

Business Risk

The Company's financial results may be significantly influenced by its business environment. Business risks include, but not limited to:

- cost to find, develop, produce and deliver commodities;
- satisfactory title to property it has agreed to develop;
- government regulations; and
- cost of capital.

Uncertainty of Exploration and Development Programs

Mineral exploration involves a high degree of risk and there is no assurance that expenditures made on exploration by the Company will result in discoveries or production of minerals in commercial quantities. It is difficult to project the costs of implementing an exploratory drilling program due to the inherent uncertainties of drilling unknown formations and the costs associated with encountering various drilling conditions. The long-term success of the Company's mineral programs depends on its ability to find, acquire, develop and commercially produce mineral properties.

There is no assurance that the Company will be able to locate satisfactory properties for acquisition or participation. Even if such acquisitions or participations are identified, the Company may determine that current markets, terms of acquisition and participation or pricing conditions make such acquisitions, or participations uneconomic. Future mineral exploration may involve unprofitable efforts, not only from unsuccessful exploration drilling, but also from deposits that do not produce sufficient net revenues to return a profit after mining, operating and other costs.

SIERRA GRANDE MINERALS INC.
MANAGEMENT DISCUSSION AND ANALYSIS
Nine months ended September 30, 2024

In addition, mining hazards or environmental damage could greatly increase the costs of operations, and various field operating conditions, such as delays in obtaining any necessary governmental consent or approvals, extreme weather conditions or insufficient transportation capacity, may adversely affect the production from successful mines. Mineral exploration and development activities are also dependent on the availability of drilling and related equipment in the particular areas where such activities will be conducted. Demand for such limited equipment or access restrictions may affect the availability of such equipment to the Company and may delay exploration and development activities.

Future Acquisition

The Company undertakes evaluations of potential opportunities to acquire additional mining assets from time to time. Any resultant acquisitions or joint ventures may be significant in size, may change the scale of the Company's business and may expose the Company to new geographic, political, operating, financial and geological risks. The Company's success in its growth strategies depends on its ability to identify suitable acquisitions, acquire them on acceptable terms and integrate them successfully into those already in existence.

Any future acquisitions would be accompanied by risks, such as changes in commodity prices, reserves proving to be below expectations; the difficulty of assimilating the operations and personnel of any acquired companies; the potential disruption of the Company's ongoing business; the inability of management to maximize the financial and strategic position of the Company through the successful integrations of acquired assets; the maintenance of uniform standards, controls, procedures and policies; the potential unknown liabilities associated with acquired assets and businesses. In addition, the Company may need additional capital to finance new acquisitions of assets. Equity financing may expose the Company and its existing shareholders to dilution. There can be no assurance that the Company would be successful in overcoming these risks or any other problems encountered in connection with such acquisition of assets.

Regulatory Risk

The operations of all mineral explorers and producers are subject to extensive controls and regulations imposed by various levels of government. The Company monitors and adheres to all regulations which could affect its operations and has established standards of operating practice which are designed to minimize risk to our employees, the community and the environment. Changes to regulations could have an adverse effect on the Company's result of operations and financial condition.

Safety and Environmental Risk

The mineral exploration business is subject to extensive regulation pursuant to various state, national and international conventions and regulations. Environmental legislation provides for, among other things, restrictions and prohibitions on mine size, mill size and overburden and tailing management.

The Company is committed to meeting its environmental and safety policy that is designed, at minimum to comply with current governmental regulations set for the mineral exploration industry. Changes to government regulations are monitored to ensure compliance. Environmental reviews are completed as part of the due diligence process when evaluating acquisitions and developments.