

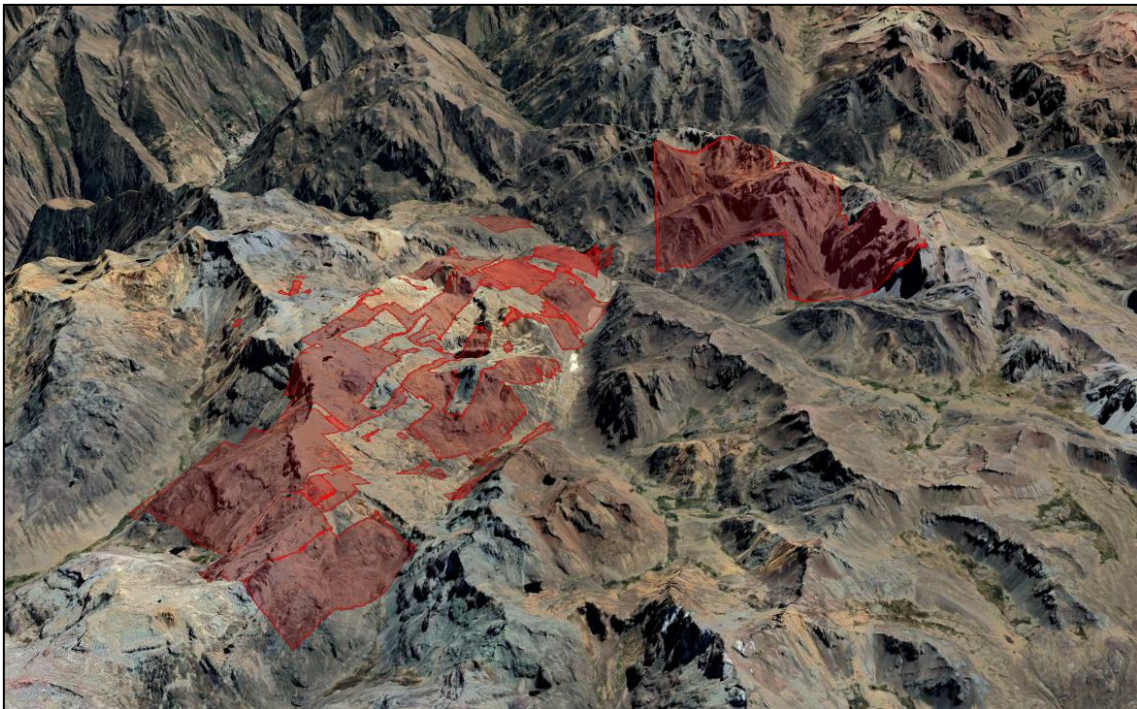


NI 43-101 Technical Report

Silveria Property

Central Peru

Longitude: -76.25 Latitude: -11.85



Projection of the Property Concessions on Google Earth Imagery



Prepared by: David Seers MGeol (Hons) AusIMM (CP)

Effective Date: February 10th, 2021

Date and Signature Page

The report titled “NI 43-101 Technical Report Silveria Property Central Peru” with an effective date of February 10th, 2021 was prepared on behalf of Sierra Growth Corp. by David Seers (QP).

Name	Signed	Date Signed (dd/mm/yyyy)
David Seers		13/12/2021

Table of Contents

Contents

Date and Signature Page	1
Table of Contents	2
1 Summary	4
2 Introduction	6
3 Reliance on Other Experts.....	7
4 Property Description and Location	8
5 Accessibility, Climate, Local Resources, Infrastructure and Physiography	19
6 History.....	21
6.1 General History	21
6.2 Property Ownership and Recent Exploration	21
7 Geological Setting and Mineralisation.....	23
7.1 Regional Geology	23
7.2 Local Geology.....	25
7.3 Property Geology	27
8 Deposit Type.....	28
9 Exploration	29
10 Drilling	31
11 Sampling Preparation, Analyses and Security	32
12 Data Verification	33
13 Mineral Processing and Metallurgical Testing.....	34
14 Mineral Resources Estimates	35
23 Adjacent Properties	36
24 Other Relevant Data and Information	37
25 Interpretation and Conclusions	38
26 Recommendations.....	39
27 References.....	40

List of Figures

Figure 4-1: Property Location	8
Figure 4-2: Property Concessions.....	10
Figure 5-1: Projection of the Property Concessions over topography using Google Earth	19
Figure 5-2: Property Access	20
Figure 7-1: Regional Geology – Summarized from Mapsheet 24-K by Mr Seers (QP).	24
Figure 7-2: Simplified cross-section through regional geology. The line of section (A-B) is represented on Figure 7-1.	24
Figure 7-3: Local Geology.....	26
Figure 23-1: Adjacent Properties	36

List of Tables

Table 4-1: Approximate Centre Coordinate of the Property	9
Table 4-2: Property Concessions	11
Table 4-3: Property Concessions with Known Environmental Liability	18
Table 6-1: Various Veins - Grab Sampling - Highlight Assays - Grenville	21
Table 6-2: Reserva Vein - Chip Channel Sampling - Highlight Assays - Grenville	22
Table 9-1: Historical Grab Samples (Reported June 2007)	29
Table 9-2: Historical Grab Channel Samples (Reported January 2010)	29

1 Summary

Following a Technical Disclosure review, Sierra Growth Corp. (Sierra, or the Issuer) has prepared a Technical Report in accordance with NI 43-101 for the Silveria Property (Property) in the Lima region of central Peru.

On October 27, 2020, Sierra reported the sale of its interest in the Property to CIEMSA, a private Peruvian company. Under the terms of sale, CIEMSA agree to pay Sierra US\$1M in staged payments over a three-year period commencing August 21, 2020. Sierra retain a 1% NSR for three years commencing upon the date of mineral extraction/production.

Mr David Seers (QP) has been commissioned by Sierra to prepare the Technical Report (Report). Access agreements with local communities are not in place and for this reason and it has not been possible for Mr Seers (QP) to undertake an independent visit of the Property.

Mr Seers (QP) has used the following information sources to prepare the Report:

- Press releases issued by Sierra
- Data provided by Dra. Greta Castillo (legal counsel to the Issuer) related to the property concessions and recorded environmental liabilities
- 1:100k geological mapping and bulletins published by the Instituto Geológico Minero y Metalúrgico (INGEMMET), part of Peru's Ministry of Energy and Mines (MINEM)
- Google Earth imagery

The Property is in the Pacococha Mining District close to the town of San Mateo in the central Peruvian Andes. The Property consists of 203 concessions with a combined area of approximately 3,270 hectares.

The Pacococha Mining District is underlain by thick sequences of volcanic flows and deposits. The andesite-dacite Millotingo Formation of volcanics has been down-dropped and preserved between two sub-parallel northwest trending faults. In the area of the Property, older and more andesitic Rimac Formation of volcanics are juxtaposed against the Millotingo Formation. Folded cretaceous sediment that forms basement geology and Eocene volcano-sediments are exposed to the northeast of the Property.

Subvolcanic bodies of diorite and rhyodacite composition bound the Millotingo volcanics, color anomalies are clearly visible on Google Earth imagery around rhyodacite bodies indicating hydrothermal alteration.

Mineralisation in the Pacococha Mining District is spatially related to sub-volcanic bodies and associated colour anomalies. Polymetallic, quartz-carbonate, epithermal veins are recognised throughout the Pacococha Mining District. Northeast trending structures with mine workings are evident on Google Earth at the Property, at least four of these structures have been mined for polymetallic mineralisation.

Tailings deposits and infrastructure are clearly visible in and around the Property on Google Earth imagery hinting at a significant history of mining. Formal production at the Property ceased in 1992.

The Issuer has not had sufficient access to the Property to enable it to undertake significant exploration. Exploration results reported in press releases In June 2007 by Grenville Gold Corporation (now Sierra) detailed assay results for 4 grab samples taken from 4 different veins confirming polymetallic mineralisation at the Property. In January 2010, Grenville Gold Corporation released

assay results for 6 chip channel samples from an 86-channel sample program on 345 level of the Reserva vein that confirmed polymetallic mineralisation across intervals of up to 1.85m.

Mr Seers (QP) concludes the following:

- The Property is in regionally prospective metallogenic belt XX1-A and Pacococha Mining District recognized for hosting polymetallic epithermal veins
- The Property hosts multiple epithermal veins and at least four of these veins have been exploited
- Historical mining at the Property demonstrates continuity of mineralized structures over significant strike and vertical distances
- The concessions that make up the Property are interrupted by third-party concessions; a single mineralised structure may extend across concessions held by multiple owners. This has the potential to complicate any future operational plans
- Social and community issues are a known complication in the area including at the Property, if these issues are not overcome it will not be possible to determine the economic potential of the Property
- Exploration at the Property is limited and has not tested potential extensions of veins beyond historical workings
- There is significant potential to identify extensions of known structures along strike and to depth
- There is potential to identify lower grade disseminated mineralisation in sub-volcanic bodies.

Mr Seers (QP) emphasizes that it will not be possible to evaluate the geological potential of the Property until access rights have been agreed with local communities. Furthermore, social and community issues are known in the area of the Property and there is no guarantee that access to the Property can be negotiated.

Mr Seers (QP) highlights that the Issuer has sold the Property, for this reason he has not presented budgeted exploration programs. Notwithstanding this, he recommends consultation to determine the social and community issues related to the Property and how they can be overcome. The Dirección Regional de Energía y Minas (DREM) in Lima should be consulted in this regard.

Assuming access to the Property can be negotiated the following programs are recommended:

- Enter safely accessible mine workings to map veins and to determine relative sizes and endowment of vein structures and if any mineralisation remain in-situ
- Determine the cost to remediate legacy environmental liabilities.

2 Introduction

Following a Technical Disclosure review, Sierra Growth Corp. (Sierra or the Issuer) has prepared a Technical Report in accordance with NI 43-101 for the Silveria Property (Property) in the Lima region of central Peru.

Mr David Seers (QP) has been commissioned by Sierra Growth Corp. (Sierra or the Issuer) to complete a Technical Report (the Report) in accordance with NI 43-101 for the Silveria Property (Property) in the Lima region of central Peru.

Sierra Growth Corp. is listed on the Canadian Securities Exchange (CSE) under the ticker (CSE:SGRO).

On October 27, 2020, Sierra announced the sale of the Property to the private Peruvian entity CIMESA. The sale is subject to staged payments over three-years. Sierra's interest in the Property is a 1% NSR related to any production from the Property for a period of three years from first production.

Information contained in this report has been sourced from:

- The Sierra Growth Corp. website (<https://www.sierragrowth.com/>)
- Dra. Greta Castillo (legal counsel to Sierra)
- Geocatmin web-portal (<https://geocatmin.ingemmet.gob.pe/geocatmin/>) made available by the Instituto Geológico Minero y Metalúrgico "INGEMMET", part of Peru's Ministry of Energy and Mines
- Mapsheet 24-k Matucana
- Boletín 36 Geología de los Cuadrangulos de: Matucana y Huarochiri
- Discussions between David (QP) and representatives of Sierra Growth Corp.

The Property is an early-stage exploration Property, and the Issuer has not been able to access the Property; local communities are nervous about receiving foreign visitors during the Coronavirus Pandemic. In accordance with Section 9.2 (2) & (3) of NI 43-101 Mr David Seers (QP) has not undertaken a personal inspection of the Property.

Units of Measure

The metric system has been used throughout this report and all currency has been presented in US dollars 'US\$'.

Coordinate System

The UTM, WGS84 (Zone 18S) coordinate systems have been used throughout this Technical Report.

3 Reliance on Other Experts

Mr David Seers is the Qualified Person (QP) responsible for the contents of all sections of the Report.

Mr Seers (QP) has relied on Dra. Greta Castillo (legal counsel to Sierra) for a list of concessions that make up the Property and a list of environmental liabilities as reported in section 4 of the Report. The list of concessions was provided via email dated February 5th, 2021. Mr Seers has independently sourced information related to the listed concessions from the Geocatmin website on February 10th, 2020.

Mr Seers (QP) is not qualified to provide comment on legal, political, environmental or tax matters relevant to the Report. Inclusion of statements related to these matters in Section 4 of the Technical Report have been based entirely on information provided by the Issuer and Dra. Greta Castillo and have not been independently verified. This information was provided in an email from Dra. Greta Castillo to David Seers "Silveria 43-101" dated 11th February 2021.

4 Property Description and Location

The Property straddles the Municipalities of San Damian and San Mateo in the Province of Huarochiri and Region Lima in Central Peru (Figure 4-1).

On October 27, 2020, Sierra reported the sale of its interest in the Property to CIEMSA, a private Peruvian company. Under the terms of sale, CIEMSA agree to pay Sierra US\$1M in staged payments over a three-year period commencing August 21, 2020. Sierra retain a 1% NSR for three years commencing upon the date of first mineral production.

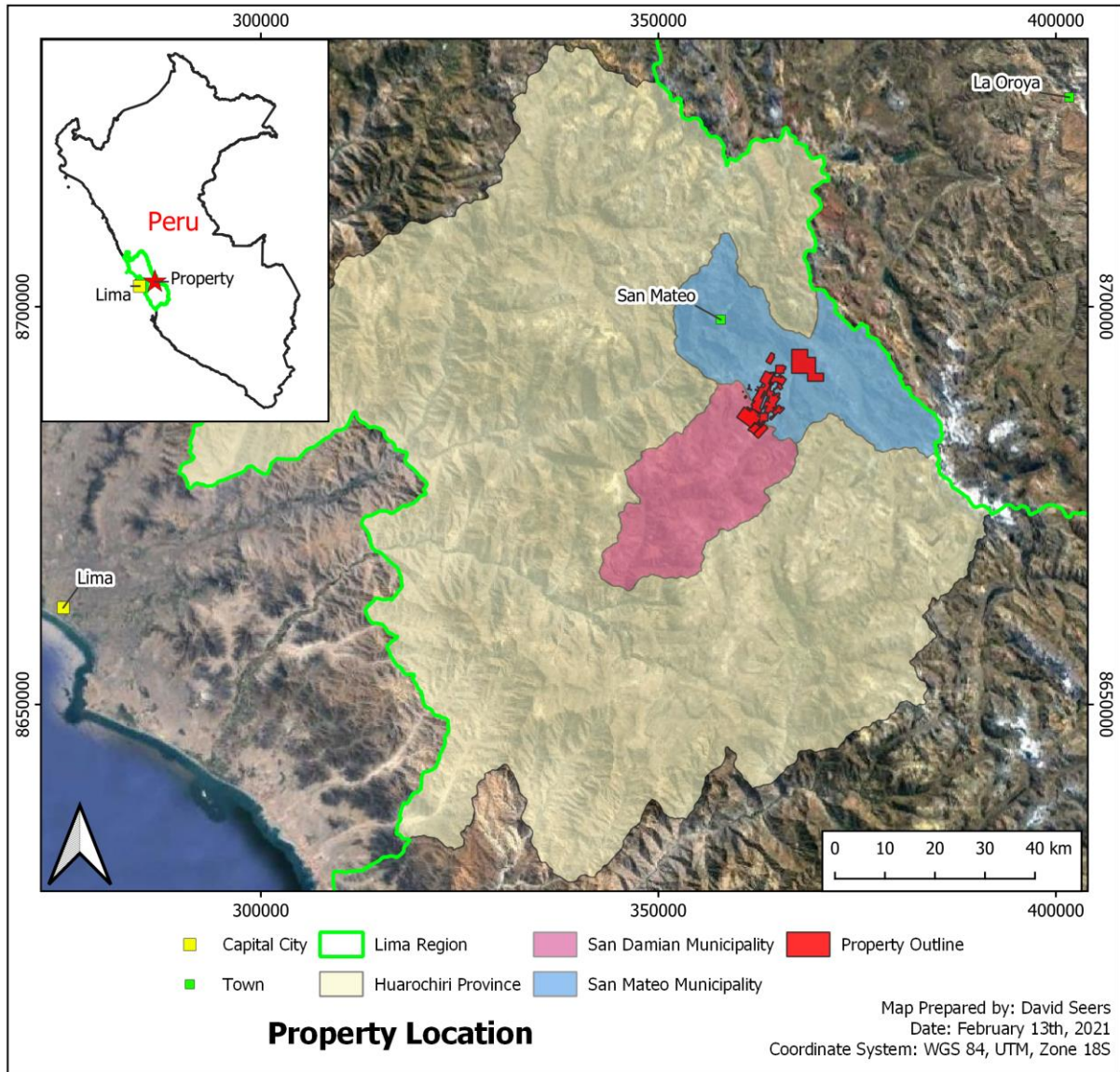


Figure 4-1: Property Location

The approximate centre of the Property in the UTM, Latitude/Longitude, and WGS 84, UTM, Zone 18S coordinate system is provided in (Table 4-1).

Table 4-1: Approximate Centre Coordinate of the Property

Coordinate System	Easting / Longitude	Northing / Latitude
WGS 84, UTM, Zone 18S	363372	8688796
UTM, Latitude/Longitude	-76.254	-11.859

The Property consists of 203 concessions (Figure 4-2 and Table 4-2) in the Pacococha Mining District with a combined area of approximately 3,270 hectares. Property concessions are distributed in an irregular form including larger blocks and smaller isolated blocks interrupted by third party concessions. The Millotingo, Pacococha, Silveria, and Germania areas of the Property have been identified in Figure 4-2.

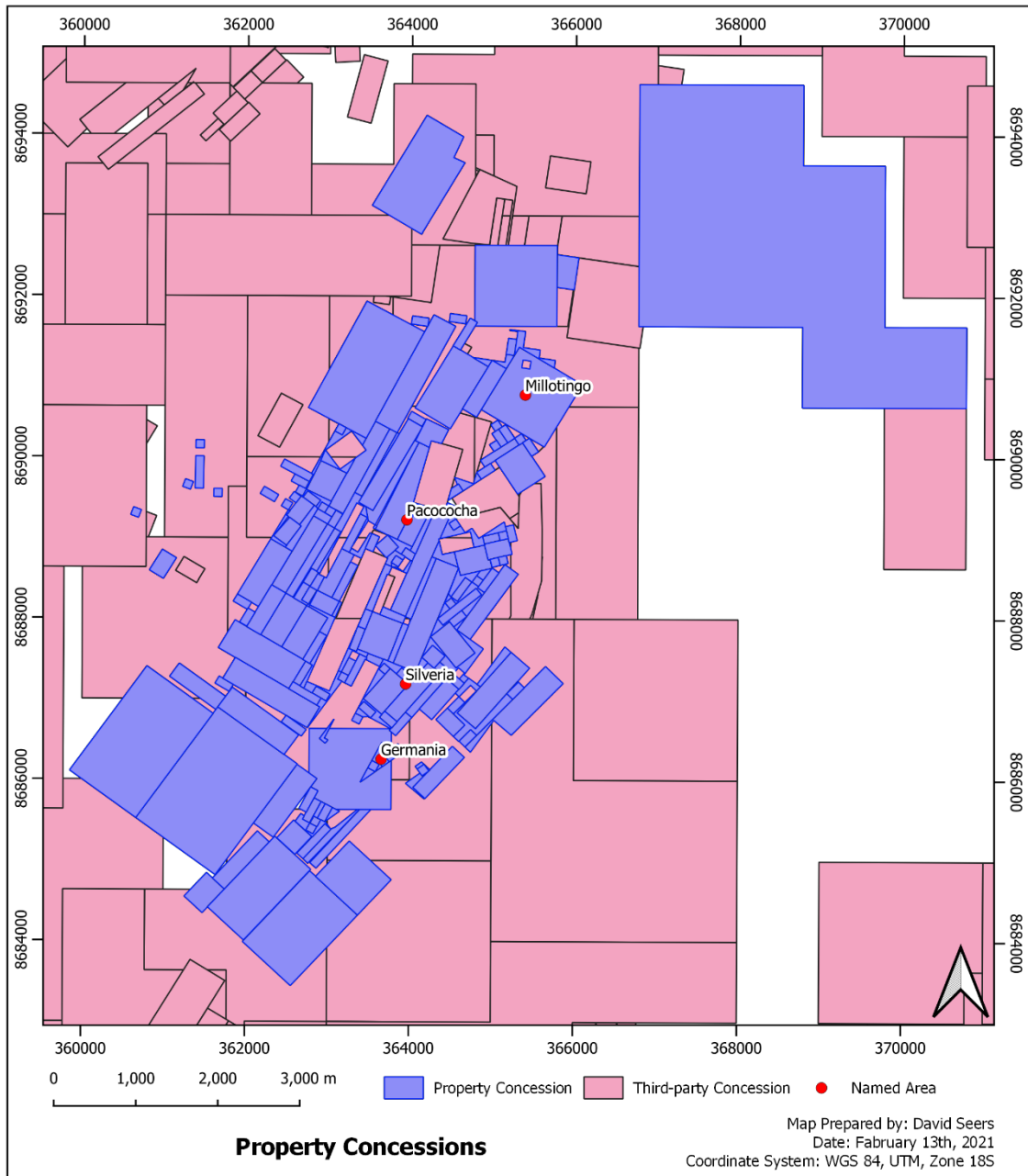


Figure 4-2: Property Concessions

Three entities are recorded as the holders of the Property concessions:

- Consorcio de Mineros Ejecutores Mineros S.A. (55 x concessions)
- Minera Grenville S.A.C. (4 x concessions)
- Inversiones Mineros Alexander S.A.C. (144 x concessions)

Prior to the sale of the Property, concessions were 100% owned by Sierra.

Table 4-2: Property Concessions

#	Concession Code	Concession Name	Concession Holder	Area Hectares	Date Granted (dd/mm/yyyy)
1	10089607	CORAYMA	CONSORCIO DE INGENIEROS EJECUTORES MINEROS S.A.	15.9	31/05/2007
2	10106407	CORAYMA 1	CONSORCIO DE INGENIEROS EJECUTORES MINEROS S.A.	4.0	29/08/2007
3	10106607	CORAYMA 2	CONSORCIO DE INGENIEROS EJECUTORES MINEROS S.A.	5.7	31/07/2007
4	10394306	DOÑA VANESSA 2	CONSORCIO DE INGENIEROS EJECUTORES MINEROS S.A.	2.0	09/03/2007
5	10394406	DOÑA VANESSA 3	CONSORCIO DE INGENIEROS EJECUTORES MINEROS S.A.	6.0	27/04/2007
6	10363406	EL NEVADO CMG	CONSORCIO DE INGENIEROS EJECUTORES MINEROS S.A.	29.9	09/03/2007
7	10384706	EL NEVADO CMG I	CONSORCIO DE INGENIEROS EJECUTORES MINEROS S.A.	13.9	31/07/2007
8	30025407	FRANCISCA ALEXANDRA II	CONSORCIO DE INGENIEROS EJECUTORES MINEROS S.A.	86.0	06/04/2009
9	30025207	FRANCISCA ALEXANDRA IV	CONSORCIO DE INGENIEROS EJECUTORES MINEROS S.A.	29.9	30/12/2008
10	30024807	FRANCISCA ALEXANDRA VIII	CONSORCIO DE INGENIEROS EJECUTORES MINEROS S.A.	1.5	04/09/2008
11	30024607	FRANCISCA ALEXANDRA X	CONSORCIO DE INGENIEROS EJECUTORES MINEROS S.A.	2.0	01/08/2008
12	10503006	HATUM 47	CONSORCIO DE INGENIEROS EJECUTORES MINEROS S.A.	16.0	27/04/2007
13	10503206	HATUM 49	CONSORCIO DE INGENIEROS EJECUTORES MINEROS S.A.	12.0	27/04/2007
14	10503306	HATUM 50	CONSORCIO DE INGENIEROS EJECUTORES MINEROS S.A.	71.9	31/05/2007
15	10503406	HATUM 51	CONSORCIO DE INGENIEROS EJECUTORES MINEROS S.A.	41.9	31/05/2007
16	10503606	HATUM 53	CONSORCIO DE INGENIEROS EJECUTORES MINEROS S.A.	95.8	27/04/2007
17	10343106	LA ENGREIDA DEL VIEJITO	CONSORCIO DE INGENIEROS EJECUTORES MINEROS S.A.	20.0	31/01/2007
18	10146307	PRETOR XXII	CONSORCIO DE INGENIEROS EJECUTORES MINEROS S.A.	4.3	31/10/2007
19	10187006	SAN JORGE 2006	CONSORCIO DE INGENIEROS EJECUTORES MINEROS S.A.	28.6	30/11/2006
20	10343006	SAN JUDAS TADEO 26 03	CONSORCIO DE INGENIEROS EJECUTORES MINEROS S.A.	5.0	09/03/2007
21	10269006	SAN PABLO B G	CONSORCIO DE INGENIEROS EJECUTORES MINEROS S.A.	10.7	29/12/2006
22	10364706	SANTA ANA DE PACOTA	CONSORCIO DE INGENIEROS EJECUTORES MINEROS S.A.	100.0	25/05/2010
23	10364506	SANTA ANA DE PACOTA I	CONSORCIO DE INGENIEROS EJECUTORES MINEROS S.A.	1.4	27/04/2007
24	10364606	SANTA ANA DE PACOTA II	CONSORCIO DE INGENIEROS EJECUTORES MINEROS S.A.	10.0	29/08/2007

#	Concession Code	Concession Name	Concession Holder	Area Hectares	Date Granted (dd/mm/yyyy)
25	10364406	SANTA ANA DE PACOTA III	CONSORCIO DE INGENIEROS EJECUTORES MINEROS S.A.	6.0	31/07/2007
26	10268906	SANTA MARIA B G	CONSORCIO DE INGENIEROS EJECUTORES MINEROS S.A.	10.0	29/12/2006
27	10317706	SANTA MARIA BG 1	CONSORCIO DE INGENIEROS EJECUTORES MINEROS S.A.	2.0	31/01/2007
28	10351106	SANTA MARIA BG 3	CONSORCIO DE INGENIEROS EJECUTORES MINEROS S.A.	20.0	31/01/2007
29	10351006	SANTA MARIA BG 4	CONSORCIO DE INGENIEROS EJECUTORES MINEROS S.A.	23.3	31/05/2007
30	10343206	SANTA ROSITA 86 2006	CONSORCIO DE INGENIEROS EJECUTORES MINEROS S.A.	29.4	31/01/2007
31	10187806	SHADDAY 1	CONSORCIO DE INGENIEROS EJECUTORES MINEROS S.A.	41.9	31/08/2006
32	10187906	SHADDAY 2	CONSORCIO DE INGENIEROS EJECUTORES MINEROS S.A.	5.2	31/08/2006
33	10362107	SHEILA	CONSORCIO DE INGENIEROS EJECUTORES MINEROS S.A.	1000.0	15/03/2011
34	10142507	SILVERIA MINE 159	CONSORCIO DE INGENIEROS EJECUTORES MINEROS S.A.	2.2	30/11/2007
35	10499706	SILVERIA MINE 18	CONSORCIO DE INGENIEROS EJECUTORES MINEROS S.A.	16.0	31/05/2007
36	10499406	SILVERIA MINE 19	CONSORCIO DE INGENIEROS EJECUTORES MINEROS S.A.	15.0	31/05/2007
37	10181207	SILVERIA MINE 206	CONSORCIO DE INGENIEROS EJECUTORES MINEROS S.A.	2.4	14/12/2007
38	10200707	SILVERIA MINE 216	CONSORCIO DE INGENIEROS EJECUTORES MINEROS S.A.	1.8	30/11/2007
39	10200907	SILVERIA MINE 218	CONSORCIO DE INGENIEROS EJECUTORES MINEROS S.A.	2.1	06/02/2008
40	10207207	SILVERIA MINE 219	CONSORCIO DE INGENIEROS EJECUTORES MINEROS S.A.	1.0	31/10/2007
41	10207507	SILVERIA MINE 223	CONSORCIO DE INGENIEROS EJECUTORES MINEROS S.A.	7.2	30/05/2008
42	10221507	SILVERIA MINE 224	CONSORCIO DE INGENIEROS EJECUTORES MINEROS S.A.	2.4	30/11/2007
43	10221607	SILVERIA MINE 225	CONSORCIO DE INGENIEROS EJECUTORES MINEROS S.A.	2.0	01/08/2008
44	010237007A	SILVERIA MINE 227-A	CONSORCIO DE INGENIEROS EJECUTORES MINEROS S.A.	2.1	02/07/2008
45	10351707	SILVERIA MINE 228	CONSORCIO DE INGENIEROS EJECUTORES MINEROS S.A.	0.5	09/03/2009
46	10416207	SILVERIA MINE 234	CONSORCIO DE INGENIEROS EJECUTORES MINEROS S.A.	3.6	31/10/2008
47	10416007	SILVERIA MINE 235	CONSORCIO DE INGENIEROS EJECUTORES MINEROS S.A.	2.0	10/02/2009
48	10577007	SILVERIA MINE 238	CONSORCIO DE INGENIEROS EJECUTORES MINEROS S.A.	0.4	31/07/2009
49	10576907	SILVERIA MINE 239	CONSORCIO DE INGENIEROS EJECUTORES MINEROS S.A.	0.1	30/12/2008
50	10576707	SILVERIA MINE 241	CONSORCIO DE INGENIEROS EJECUTORES MINEROS S.A.	1.6	31/10/2008
51	10505506	SILVERIA MINE 45	CONSORCIO DE INGENIEROS EJECUTORES MINEROS S.A.	5.0	31/05/2007
52	10497906	SILVERIA MINE 5	CONSORCIO DE INGENIEROS EJECUTORES MINEROS S.A.	80.1	07/07/2010
53	10237007	SILVERIA MINE 63	CONSORCIO DE INGENIEROS EJECUTORES MINEROS S.A.	0.9	06/02/2008
54	10106507	TESSY	CONSORCIO DE INGENIEROS EJECUTORES MINEROS S.A.	3.9	26/06/2007

#	Concession Code	Concession Name	Concession Holder	Area Hectares	Date Granted (dd/mm/yyyy)
55	10259706	WISKY	CONSORCIO DE INGENIEROS EJECUTORES MINEROS S.A.	20.0	29/12/2006
56	10498006	SILVERIA M MINE 4	INVERSIONES MINERAS ALEXANDER S.A.C.	13.9	31/05/2007
57	10497606	SILVERIA MINE 1	INVERSIONES MINERAS ALEXANDER S.A.C.	119.8	26/06/2007
58	10498906	SILVERIA MINE 10	INVERSIONES MINERAS ALEXANDER S.A.C.	1.2	31/05/2007
59	10515606	SILVERIA MINE 100	INVERSIONES MINERAS ALEXANDER S.A.C.	1.0	31/05/2007
60	10515506	SILVERIA MINE 101	INVERSIONES MINERAS ALEXANDER S.A.C.	1.8	31/05/2007
61	10515706	SILVERIA MINE 103	INVERSIONES MINERAS ALEXANDER S.A.C.	3.5	31/07/2007
62	10515806	SILVERIA MINE 104	INVERSIONES MINERAS ALEXANDER S.A.C.	2.1	31/05/2007
63	10516006	SILVERIA MINE 105	INVERSIONES MINERAS ALEXANDER S.A.C.	0.1	31/05/2007
64	10536506	SILVERIA MINE 108	INVERSIONES MINERAS ALEXANDER S.A.C.	1.6	29/08/2007
65	10498806	SILVERIA MINE 11	INVERSIONES MINERAS ALEXANDER S.A.C.	3.0	31/05/2007
66	10536706	SILVERIA MINE 110	INVERSIONES MINERAS ALEXANDER S.A.C.	2.0	31/05/2007
67	10536806	SILVERIA MINE 111	INVERSIONES MINERAS ALEXANDER S.A.C.	1.0	31/07/2007
68	10536906	SILVERIA MINE 112	INVERSIONES MINERAS ALEXANDER S.A.C.	1.0	26/06/2007
69	10537006	SILVERIA MINE 113	INVERSIONES MINERAS ALEXANDER S.A.C.	2.0	31/05/2007
70	10537106	SILVERIA MINE 114	INVERSIONES MINERAS ALEXANDER S.A.C.	1.0	31/05/2007
71	10537206	SILVERIA MINE 115	INVERSIONES MINERAS ALEXANDER S.A.C.	2.0	31/05/2007
72	10537306	SILVERIA MINE 116	INVERSIONES MINERAS ALEXANDER S.A.C.	4.6	30/11/2007
73	10537406	SILVERIA MINE 117	INVERSIONES MINERAS ALEXANDER S.A.C.	2.0	31/05/2007
74	10537506	SILVERIA MINE 118	INVERSIONES MINERAS ALEXANDER S.A.C.	7.8	26/06/2007
75	10537606	SILVERIA MINE 119	INVERSIONES MINERAS ALEXANDER S.A.C.	2.0	26/06/2007
76	10498406	SILVERIA MINE 12	INVERSIONES MINERAS ALEXANDER S.A.C.	1.0	31/05/2007
77	10537706	SILVERIA MINE 120	INVERSIONES MINERAS ALEXANDER S.A.C.	2.2	31/05/2007
78	10072607	SILVERIA MINE 121	INVERSIONES MINERAS ALEXANDER S.A.C.	2.0	31/05/2007
79	10072707	SILVERIA MINE 123	INVERSIONES MINERAS ALEXANDER S.A.C.	1.0	29/08/2007
80	10072807	SILVERIA MINE 124	INVERSIONES MINERAS ALEXANDER S.A.C.	1.0	31/05/2007
81	10498506	SILVERIA MINE 13	INVERSIONES MINERAS ALEXANDER S.A.C.	3.0	31/05/2007
82	10140207	SILVERIA MINE 138	INVERSIONES MINERAS ALEXANDER S.A.C.	1.0	29/08/2007
83	10140307	SILVERIA MINE 139	INVERSIONES MINERAS ALEXANDER S.A.C.	1.0	30/11/2007
84	10499206	SILVERIA MINE 14	INVERSIONES MINERAS ALEXANDER S.A.C.	6.0	31/05/2007
85	10140407	SILVERIA MINE 140	INVERSIONES MINERAS ALEXANDER S.A.C.	1.0	29/08/2007

#	Concession Code	Concession Name	Concession Holder	Area Hectares	Date Granted (dd/mm/yyyy)
86	10140507	SILVERIA MINE 141	INVERSIONES MINERAS ALEXANDER S.A.C.	2.0	29/08/2007
87	10140607	SILVERIA MINE 142	INVERSIONES MINERAS ALEXANDER S.A.C.	2.9	29/08/2007
88	10140707	SILVERIA MINE 143	INVERSIONES MINERAS ALEXANDER S.A.C.	1.0	29/08/2007
89	10140807	SILVERIA MINE 144	INVERSIONES MINERAS ALEXANDER S.A.C.	1.0	19/03/2008
90	10140907	SILVERIA MINE 145	INVERSIONES MINERAS ALEXANDER S.A.C.	4.0	29/08/2007
91	10141207	SILVERIA MINE 146	INVERSIONES MINERAS ALEXANDER S.A.C.	1.0	29/08/2007
92	10141307	SILVERIA MINE 147	INVERSIONES MINERAS ALEXANDER S.A.C.	1.0	29/08/2007
93	10141407	SILVERIA MINE 148	INVERSIONES MINERAS ALEXANDER S.A.C.	2.0	28/09/2007
94	10141507	SILVERIA MINE 149	INVERSIONES MINERAS ALEXANDER S.A.C.	1.0	29/08/2007
95	10499006	SILVERIA MINE 15	INVERSIONES MINERAS ALEXANDER S.A.C.	2.0	31/05/2007
96	10141607	SILVERIA MINE 150	INVERSIONES MINERAS ALEXANDER S.A.C.	1.0	29/08/2007
97	10141707	SILVERIA MINE 151	INVERSIONES MINERAS ALEXANDER S.A.C.	4.0	29/08/2007
98	10141907	SILVERIA MINE 152	INVERSIONES MINERAS ALEXANDER S.A.C.	2.0	30/11/2007
99	10141807	SILVERIA MINE 153	INVERSIONES MINERAS ALEXANDER S.A.C.	3.0	29/08/2007
100	10142107	SILVERIA MINE 155	INVERSIONES MINERAS ALEXANDER S.A.C.	2.2	29/08/2007
101	10142207	SILVERIA MINE 156	INVERSIONES MINERAS ALEXANDER S.A.C.	3.0	29/08/2007
102	10142307	SILVERIA MINE 157	INVERSIONES MINERAS ALEXANDER S.A.C.	2.0	29/08/2007
103	10499106	SILVERIA MINE 16	INVERSIONES MINERAS ALEXANDER S.A.C.	15.0	31/05/2007
104	10142707	SILVERIA MINE 161	INVERSIONES MINERAS ALEXANDER S.A.C.	2.9	06/02/2008
105	10143007	SILVERIA MINE 163	INVERSIONES MINERAS ALEXANDER S.A.C.	1.4	29/08/2007
106	10143207	SILVERIA MINE 165	INVERSIONES MINERAS ALEXANDER S.A.C.	2.0	29/08/2007
107	10143607	SILVERIA MINE 169	INVERSIONES MINERAS ALEXANDER S.A.C.	2.0	28/09/2007
108	10499306	SILVERIA MINE 17	INVERSIONES MINERAS ALEXANDER S.A.C.	4.0	31/05/2007
109	10144107	SILVERIA MINE 173	INVERSIONES MINERAS ALEXANDER S.A.C.	4.2	29/08/2007
110	10144207	SILVERIA MINE 174	INVERSIONES MINERAS ALEXANDER S.A.C.	4.0	29/08/2007
111	10144307	SILVERIA MINE 175	INVERSIONES MINERAS ALEXANDER S.A.C.	2.0	29/08/2007
112	10144407	SILVERIA MINE 176	INVERSIONES MINERAS ALEXANDER S.A.C.	1.0	29/08/2007
113	10144607	SILVERIA MINE 178	INVERSIONES MINERAS ALEXANDER S.A.C.	2.0	30/11/2007
114	10144707	SILVERIA MINE 179	INVERSIONES MINERAS ALEXANDER S.A.C.	2.0	29/08/2007
115	10144807	SILVERIA MINE 180	INVERSIONES MINERAS ALEXANDER S.A.C.	3.0	29/08/2007
116	10145007	SILVERIA MINE 182	INVERSIONES MINERAS ALEXANDER S.A.C.	6.0	29/08/2007

#	Concession Code	Concession Name	Concession Holder	Area Hectares	Date Granted (dd/mm/yyyy)
117	10145107	SILVERIA MINE 183	INVERSIONES MINERAS ALEXANDER S.A.C.	2.0	14/12/2007
118	10145207	SILVERIA MINE 184	INVERSIONES MINERAS ALEXANDER S.A.C.	1.0	28/09/2007
119	10145307	SILVERIA MINE 185	INVERSIONES MINERAS ALEXANDER S.A.C.	3.5	29/08/2007
120	10145607	SILVERIA MINE 188	INVERSIONES MINERAS ALEXANDER S.A.C.	1.0	29/08/2007
121	10161407	SILVERIA MINE 189	INVERSIONES MINERAS ALEXANDER S.A.C.	4.0	29/08/2007
122	10161607	SILVERIA MINE 191	INVERSIONES MINERAS ALEXANDER S.A.C.	2.0	29/08/2007
123	10161707	SILVERIA MINE 192	INVERSIONES MINERAS ALEXANDER S.A.C.	2.6	02/07/2008
124	10161807	SILVERIA MINE 193	INVERSIONES MINERAS ALEXANDER S.A.C.	1.0	30/11/2007
125	10161907	SILVERIA MINE 194	INVERSIONES MINERAS ALEXANDER S.A.C.	6.0	30/11/2007
126	10162107	SILVERIA MINE 196	INVERSIONES MINERAS ALEXANDER S.A.C.	2.0	29/08/2007
127	10162207	SILVERIA MINE 197	INVERSIONES MINERAS ALEXANDER S.A.C.	2.0	29/08/2007
128	10162307	SILVERIA MINE 198	INVERSIONES MINERAS ALEXANDER S.A.C.	2.0	29/08/2007
129	10497706	SILVERIA MINE 2	INVERSIONES MINERAS ALEXANDER S.A.C.	44.9	31/07/2007
130	10500006	SILVERIA MINE 20	INVERSIONES MINERAS ALEXANDER S.A.C.	20.0	31/05/2007
131	10499806	SILVERIA MINE 21	INVERSIONES MINERAS ALEXANDER S.A.C.	6.0	31/05/2007
132	10499906	SILVERIA MINE 22	INVERSIONES MINERAS ALEXANDER S.A.C.	10.0	31/05/2007
133	10206007	SILVERIA MINE 220	INVERSIONES MINERAS ALEXANDER S.A.C.	100.0	10/11/2010
134	10207307	SILVERIA MINE 221	INVERSIONES MINERAS ALEXANDER S.A.C.	1.0	30/11/2007
135	10207407	SILVERIA MINE 222	INVERSIONES MINERAS ALEXANDER S.A.C.	0.2	30/11/2007
136	10313307	SILVERIA MINE 226	INVERSGoogleEarth.AS ALEXANDER S.A.C.	9.0	14/12/2007
137	10500206	SILVERIA MINE 24	INVERSIONES MINERAS ALEXANDER S.A.C.	6.0	31/05/2007
138	10500506	SILVERIA MINE 27	INVERSIONES MINERAS ALEXANDER S.A.C.	14.0	31/05/2007
139	10500806	SILVERIA MINE 29	INVERSIONES MINERAS ALEXANDER S.A.C.	3.6	31/05/2007
140	10497806	SILVERIA MINE 3	INVERSIONES MINERAS ALEXANDER S.A.C.	44.9	31/05/2007
141	10501006	SILVERIA MINE 30	INVERSIONES MINERAS ALEXANDER S.A.C.	5.4	31/05/2007
142	10500906	SILVERIA MINE 31	INVERSIONES MINERAS ALEXANDER S.A.C.	1.4	31/05/2007
143	10501106	SILVERIA MINE 32	INVERSIONES MINERAS ALEXANDER S.A.C.	9.6	31/07/2007
144	10501406	SILVERIA MINE 34	INVERSIONES MINERAS ALEXANDER S.A.C.	24.0	31/05/2007
145	10501506	SILVERIA MINE 35	INVERSIONES MINERAS ALEXANDER S.A.C.	203.6	31/05/2007
146	10501606	SILVERIA MINE 36	INVERSIONES MINERAS ALEXANDER S.A.C.	159.7	31/05/2007
147	10504706	SILVERIA MINE 37	INVERSIONES MINERAS ALEXANDER S.A.C.	24.0	31/05/2007

#	Concession Code	Concession Name	Concession Holder	Area Hectares	Date Granted (dd/mm/yyyy)
148	10504806	SILVERIA MINE 38	INVERSIONES MINERAS ALEXANDER S.A.C.	9.0	31/05/2007
149	10504906	SILVERIA MINE 39	INVERSIONES MINERAS ALEXANDER S.A.C.	5.7	31/05/2007
150	10505006	SILVERIA MINE 40	INVERSIONES MINERAS ALEXANDER S.A.C.	4.7	31/05/2007
151	10505106	SILVERIA MINE 41	INVERSIONES MINERAS ALEXANDER S.A.C.	1.6	31/05/2007
152	10505206	SILVERIA MINE 42	INVERSIONES MINERAS ALEXANDER S.A.C.	2.0	31/05/2007
153	10505306	SILVERIA MINE 43	INVERSIONES MINERAS ALEXANDER S.A.C.	2.0	31/05/2007
154	10505406	SILVERIA MINE 44	INVERSIONES MINERAS ALEXANDER S.A.C.	6.2	31/05/2007
155	10505706	SILVERIA MINE 47	INVERSIONES MINERAS ALEXANDER S.A.C.	0.8	31/05/2007
156	10505806	SILVERIA MINE 48	INVERSIONES MINERAS ALEXANDER S.A.C.	5.4	31/05/2007
157	10505906	SILVERIA MINE 49	INVERSIONES MINERAS ALEXANDER S.A.C.	18.0	31/05/2007
158	10506006	SILVERIA MINE 50	INVERSIONES MINERAS ALEXANDER S.A.C.	18.0	31/07/2007
159	10506106	SILVERIA MINE 51	INVERSIONES MINERAS ALEXANDER S.A.C.	12.0	31/05/2007
160	10506206	SILVERIA MINE 52	INVERSIONES MINERAS ALEXANDER S.A.C.	39.9	31/05/2007
161	10506306	SILVERIA MINE 53	INVERSIONES MINERAS ALEXANDER S.A.C.	35.9	31/05/2007
162	10506406	SILVERIA MINE 54	INVERSIONES MINERAS ALEXANDER S.A.C.	3.0	31/07/2007
163	10506506	SILVERIA MINE 55	INVERSIONES MINERAS ALEXANDER S.A.C.	4.0	26/06/2007
164	10506606	SILVERIA MINE 56	INVERSIONES MINERAS ALEXANDER S.A.C.	4.5	31/05/2007
165	10506706	SILVERIA MINE 57	INVERSIONES MINERAS ALEXANDER S.A.C.	1.0	31/05/2007
166	10506806	SILVERIA MINE 58	INVERSIONES MINERAS ALEXANDER S.A.C.	29.9	31/05/2007
167	10506906	SILVERIA MINE 59	INVERSIONES MINERAS ALEXANDER S.A.C.	14.0	31/05/2007
168	10498106	SILVERIA MINE 6	INVERSIONES MINERAS ALEXANDER S.A.C.	2.0	31/05/2007
169	10507006	SILVERIA MINE 60	INVERSIONES MINERAS ALEXANDER S.A.C.	26.9	31/05/2007
170	10507106	SILVERIA MINE 61	INVERSIONES MINERAS ALEXANDER S.A.C.	1.0	26/06/2007
171	10507206	SILVERIA MINE 62	INVERSIONES MINERAS ALEXANDER S.A.C.	3.2	31/05/2007
172	10507406	SILVERIA MINE 64	INVERSIONES MINERAS ALEXANDER S.A.C.	1.0	31/07/2007
173	10507506	SILVERIA MINE 65	INVERSIONES MINERAS ALEXANDER S.A.C.	1.0	31/05/2007
174	10507606	SILVERIA MINE 66	INVERSIONES MINERAS ALEXANDER S.A.C.	1.0	31/05/2007
175	10507706	SILVERIA MINE 67	INVERSIONES MINERAS ALEXANDER S.A.C.	0.9	31/05/2007
176	10498206	SILVERIA MINE 7	INVERSIONES MINERAS ALEXANDER S.A.C.	6.0	26/06/2007
177	10508206	SILVERIA MINE 72	INVERSIONES MINERAS ALEXANDER S.A.C.	3.0	31/05/2007
178	10508406	SILVERIA MINE 74	INVERSIONES MINERAS ALEXANDER S.A.C.	2.8	31/07/2007

#	Concession Code	Concession Name	Concession Holder	Area Hectares	Date Granted (dd/mm/yyyy)
179	10508506	SILVERIA MINE 75	INVERSIONES MINERAS ALEXANDER S.A.C.	3.0	31/05/2007
180	10508606	SILVERIA MINE 76	INVERSIONES MINERAS ALEXANDER S.A.C.	1.0	31/05/2007
181	10508706	SILVERIA MINE 77	INVERSIONES MINERAS ALEXANDER S.A.C.	1.0	31/05/2007
182	10508806	SILVERIA MINE 78	INVERSIONES MINERAS ALEXANDER S.A.C.	1.2	31/05/2007
183	10508906	SILVERIA MINE 79	INVERSIONES MINERAS ALEXANDER S.A.C.	2.0	31/07/2007
184	10498606	SILVERIA MINE 8	INVERSIONES MINERAS ALEXANDER S.A.C.	11.6	31/05/2007
185	10509006	SILVERIA MINE 80	INVERSIONES MINERAS ALEXANDER S.A.C.	0.9	31/05/2007
186	10509106	SILVERIA MINE 81	INVERSIONES MINERAS ALEXANDER S.A.C.	9.0	31/05/2007
187	10509206	SILVERIA MINE 82	INVERSIONES MINERAS ALEXANDER S.A.C.	5.0	31/05/2007
188	10514306	SILVERIA MINE 85	INVERSIONES MINERAS ALEXANDER S.A.C.	10.5	31/05/2007
189	10514406	SILVERIA MINE 86	INVERSIONES MINERAS ALEXANDER S.A.C.	1.1	31/05/2007
190	10514206	SILVERIA MINE 87	INVERSIONES MINERAS ALEXANDER S.A.C.	4.8	31/07/2007
191	10514106	SILVERIA MINE 89	INVERSIONES MINERAS ALEXANDER S.A.C.	2.1	31/05/2007
192	10498706	SILVERIA MINE 9	INVERSIONES MINERAS ALEXANDER S.A.C.	1.0	31/05/2007
193	10514506	SILVERIA MINE 90	INVERSIONES MINERAS ALEXANDER S.A.C.	0.1	31/05/2007
194	10514606	SILVERIA MINE 91	INVERSIONES MINERAS ALEXANDER S.A.C.	2.0	26/06/2007
195	10514806	SILVERIA MINE 93	INVERSIONES MINERAS ALEXANDER S.A.C.	4.0	29/08/2007
196	10514906	SILVERIA MINE 94	INVERSIONES MINERAS ALEXANDER S.A.C.	9.7	31/05/2007
197	10515106	SILVERIA MINE 96	INVERSIONES MINERAS ALEXANDER S.A.C.	4.9	26/06/2007
198	10515206	SILVERIA MINE 98	INVERSIONES MINERAS ALEXANDER S.A.C.	0.6	31/05/2007
199	10515306	SILVERIAMINE 97	INVERSIONES MINERAS ALEXANDER S.A.C.	0.3	31/05/2007
200	10101308	SILVERIA MINE 242	MINERA GRENVILLE S.A.C.	1.7	31/10/2008
201	10281608	SILVERIA MINE 256	MINERA GRENVILLE S.A.C.	0.1	31/07/2009
202	10281508	SILVERIA MINE 257	MINERA GRENVILLE S.A.C.	0.3	30/12/2008
203	10259107	SILVERIA MINE 68	MINERA GRENVILLE S.A.C.	6.0	10/02/2009

Pursuant to article 39 of the General Mining Law, titleholders of mining concessions should pay an Annual Maintenance Fee (derecho de vigencia). The Annual Maintenance Fee is due on June 30th of each year, is paid one year in advance and is calculated at a rate of US\$3.00/ha. Failure to pay the Annual Maintenance Fee for two consecutive years causes the termination (caducidad) of the mining concession. However, according to article 59 of the General Mining Law, payment for one year may be delayed without penalty and the mining concessions remain in good standing. The outstanding payment for the past year can be paid on the following June 30th.

If Annual Maintenance Fees are paid, concessions can be held in perpetuity.

A mining concession does not grant the titleholder right of access. Right of access must be negotiated between the landowner(s) and concession holder.

The Property and wider Pacococha Mining District has a history of social and community issues and landowners have not allowed representatives of Sierra to access the Property and agreements to access the Property have not been reached.

Activos Mineros, a government agency, maintains a list of “pasivos ambientales” (environmental liabilities) related to historical mining activities throughout Peru. Activos Mineros has recorded 13 environmental liabilities at the Property consisting of mine workings, tailings, and concentrator plant (Table 4-3). Mr Seers (QP) notes that other environmental liabilities may exist at the Property.

Table 4-3: Property Concessions with Known Environmental Liability

Concession	Description
SILVERIA MINE 65	Germania Mining Unit
SILVERIA MINE 64	Germania Mining Unit
SILVERIA MINE 66	Germania Mining Unit
SILVERIA MINE 62	Germania Mining Unit
SILVERIA MINE 21	Silveria Mining Unit
SILVERIA MINE 180	Silveria Mining Unit
SILVERIA MINE 5	Millotingo Tailings
SAN JORGE 2006	Pacococha Mining Unit
SILVERIA MINE 149	Pacococha Mining Unit
SILVERIA MINE 223	Pacococha Mining Unit
SILVERIA MINE 223	Concentrator Plant
SILVERIA MINE 123	Concentrator Plant
SILVERIA MINE 121	Concentrator Plant

Programs recommended by Mr Seers (QP) in Section 26 of the Technical Report require the negotiation of right of access. Mr Seers (QP) is not aware of any other factors that might impede the recommended programs presented in the Technical Report.

5 Accessibility, Climate, Local Resources, Infrastructure and Physiography

The Property is in the Peruvian Andes at elevations between 4100 and 5250 meters above sea level (masl). Topography is characterised by deep steep-sided valleys and high plateaus (Figure 5-1). As is typical of the high Andes, vegetation is sparse and is limited to grasses and occasional low shrubs.

Access to the Property is possible throughout the year, however, landslides can temporarily block access during rainy periods (typically November to March). Exploration is possible throughout the year.

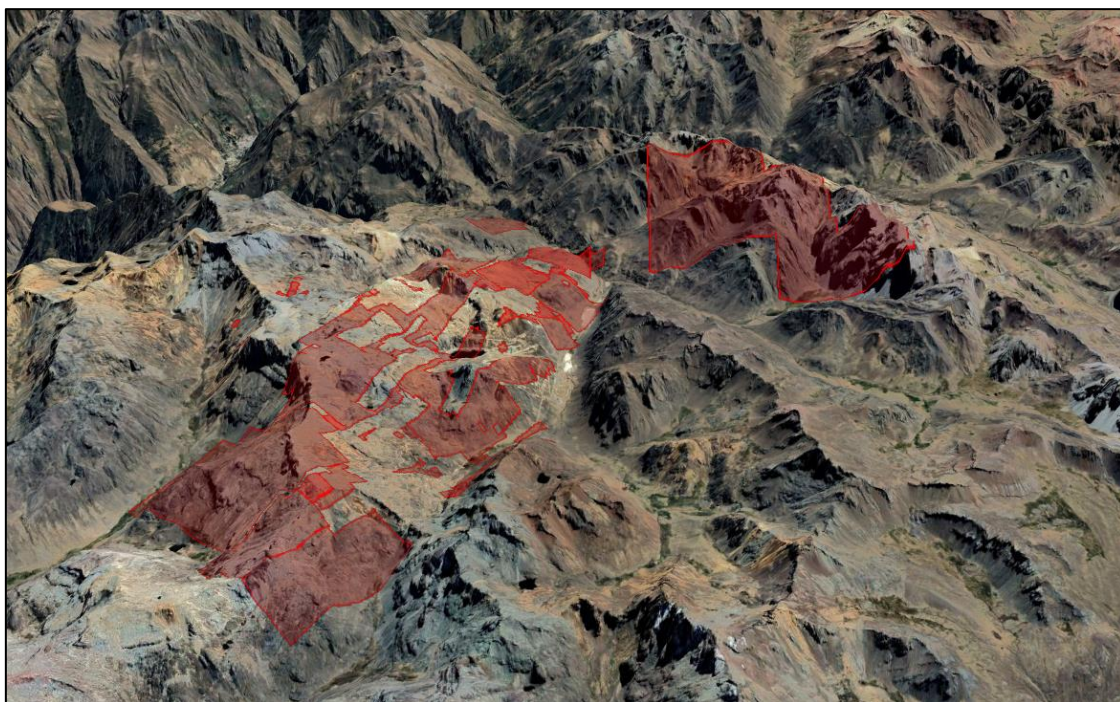


Figure 5-1: Projection of the Property Concessions over topography using Google Earth

The Property is located approximately 100km east-northeast of Lima in the Pacococha Mining District (Figure 5-2).

Driving from Lima, the Property is accessed via the Carretera Central (Major National Highway) and the town of San Mateo. Unpaved roads from San Mateo lead to large parts of the Property, including the Millotingo, Pacococha, Silveria and Germania areas. The total drive time from Lima to the Property is approximately 4 hours.

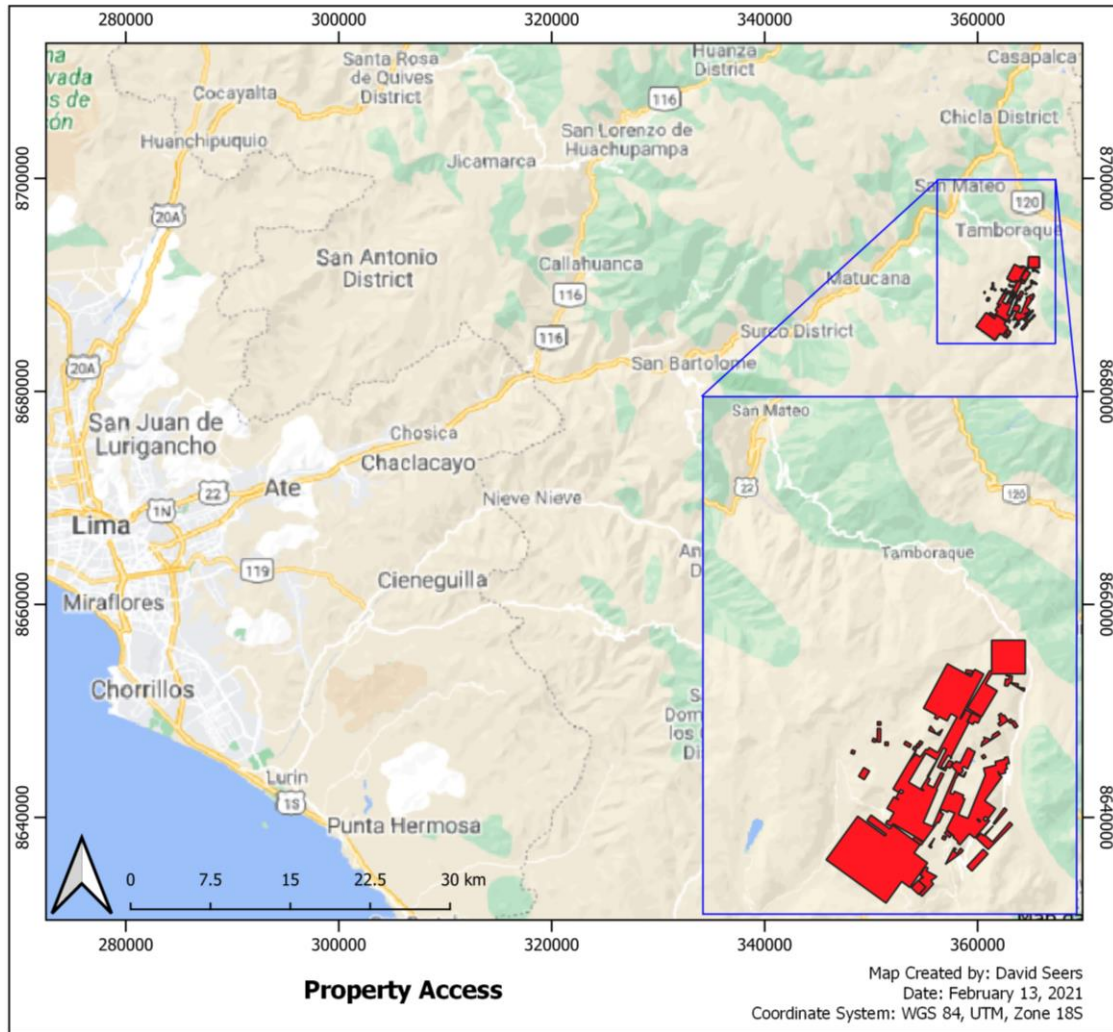


Figure 5-2: Property Access

In a direct line, the town of San Mateo is approximately 12km north-northwest of the Property, 4x4 vehicles are recommended to drive to the Property from San Mateo. San Mateo provides basic amenities and services, including mains electricity, water, sewage, landline and mobile communications, police, medical post, and hotels. Mobile communications are available in parts of the Property.

Mr Seers (QP) notes that formal studies related to potential locations for mining infrastructure (i.e., camp, processing plant, tailings, waste rock storage) have not been completed. Based on a review of Google Earth imagery Mr Seers (QP) has noted sites that he considers may be suitable for mining infrastructure. The development of any mining infrastructure is subject to permissions and permitting.

6 History

6.1 General History

Mining of mineralised veins in the Pacococha Mining District pre-dates colonial times.

Mr Seers (QP) notes that tailings deposits and abandoned infrastructure are clearly visible on Google Earth imagery indicating a significant history of mining at and around the Property.

6.2 Property Ownership and Recent Exploration

Mr Seers (QP) has compiled the following information based on press releases:

January 18, 2006 - Grenville Gold Corporation announced its acquisition of the Silveria and Germania mines to the San Mateo District Land Package.

June 4, 2007 – Grenville Gold Corporation announced grab sample assays for samples taken at the property, that confirmed significant vein hosted base metal mineralization (Table 6-1).

Table 6-1: Various Veins - Grab Sampling - Highlight Assays - Grenville

Sample	Vein	Au g/t	Ag g/t	Cu %	Pb %	Zn %
PA-17	Germania	0.325	274	3.9	3.65	4.92
PA-21	Reserva	0.322	103	0.13	2.32	19.7
PA-28	Ernesto Segundo	0.717	2200	0.12	6.79	8.85
PA-34	Millotingo	2.63	401	0.01	0.04	0.07

February 5, 2008 – Grenville Gold Corporation entered in a Joint Venture agreement (JV) with Journey Resources Corp. (Journey). Under the terms of the JV, Journey has the right to acquire 75% of the Property.

June 2008 – Journey commissions SRK Exploration Services (SRKES) to complete an NI 43-101 Technical Report for the Silveria Property.

November 14, 2008 – The JV agreement between Journey and Grenville was terminated and Grenville assumed control of the Property.

January 15, 2010 – Grenville reported underground chip channel sample results for the Property (Table 6-2). The 345 level of the Reserva Vein was sampled, 56 channels were defined across the vein and 86 samples were taken with between one and three contiguous samples per channel. Highlight samples reported were:

Table 6-2: Reserva Vein - Chip Channel Sampling - Highlight Assays - Grenville

Sample Line	Sample Count	Width (m)	Au g/t	Ag g/t	Zn %	Pb %
5	1	0.50	-	211.0	5.01	9.99
25	1	0.90	-	134.0	3.66	4.07
35	1	0.80	-	312.0	10.25	5.93
45	1	0.60	-	240.0	5.82	2.18
235	2	1.85	0.812	235.2	10.94	8.59
275	1	0.60	0.453	446.0	15.65	21.3

December 23, 2010 – Grenville Gold Corporation announced a change of name to Grenville Gold Corp.

February 25, 2019 – Grenville Gold Corp. announce a change of name to Sierra Growth Corp. (Sierra).

October 27, 2020 – Sierra announces the sale of its interest in the Property to CIMESA.

7 Geological Setting and Mineralisation

7.1 Regional Geology

The Instituto Geológico Minero y Metalúrgico (INGEMMET), part of Peru's Ministry of Energy and Mines (MINEM), publish regional geological maps at 1:100k scale with accompanying bulletins that describe the regional geology of Peru.

The geological setting of the Property is reported in 1:100k map sheet 24k "Matucana" and bulletin N° 36 "Geología de los Cuadrangulos de: Matucana y Huarochiri, Hojas 24-k y 25-k". Mr Seers (QP) has summarized key regional geological features taken from these publications in Figure 7-1 and Figure 7-2.

Basement geology consists of Palaeozoic and Mesozoic sediments, tightly folded along the Andean trend (northwest to north-northwest), is exposed to the northeast of the Property. In the area of the Property, Cenozoic volcanic sequences cover folded sediments. Intrusive plugs and sub-volcanic bodies of varying compositions are exposed through the volcanic sequences and to a minor extent in the folded sediments.

The Andean Orogeny has driven extensive faulting in the region. Major structural orientations include folding and faulting along the Andean Trend and northeast trending transfer faults. Transfer faulting is a significant mineralizing control throughout the Andes. East-west faulting is also mapped, including in the area of the Property.

Reduced compression from the mid-tertiary led to reversed fault movement and facilitated the introduction of sub-volcanic bodies that are spatially and temporally related to mineralisation in the region and wider Andes.

The Property is centrally located in metallogenic belt XX1-A and the Pacococha Mining District that are recognised for hosting epithermal Au-Ag deposits.

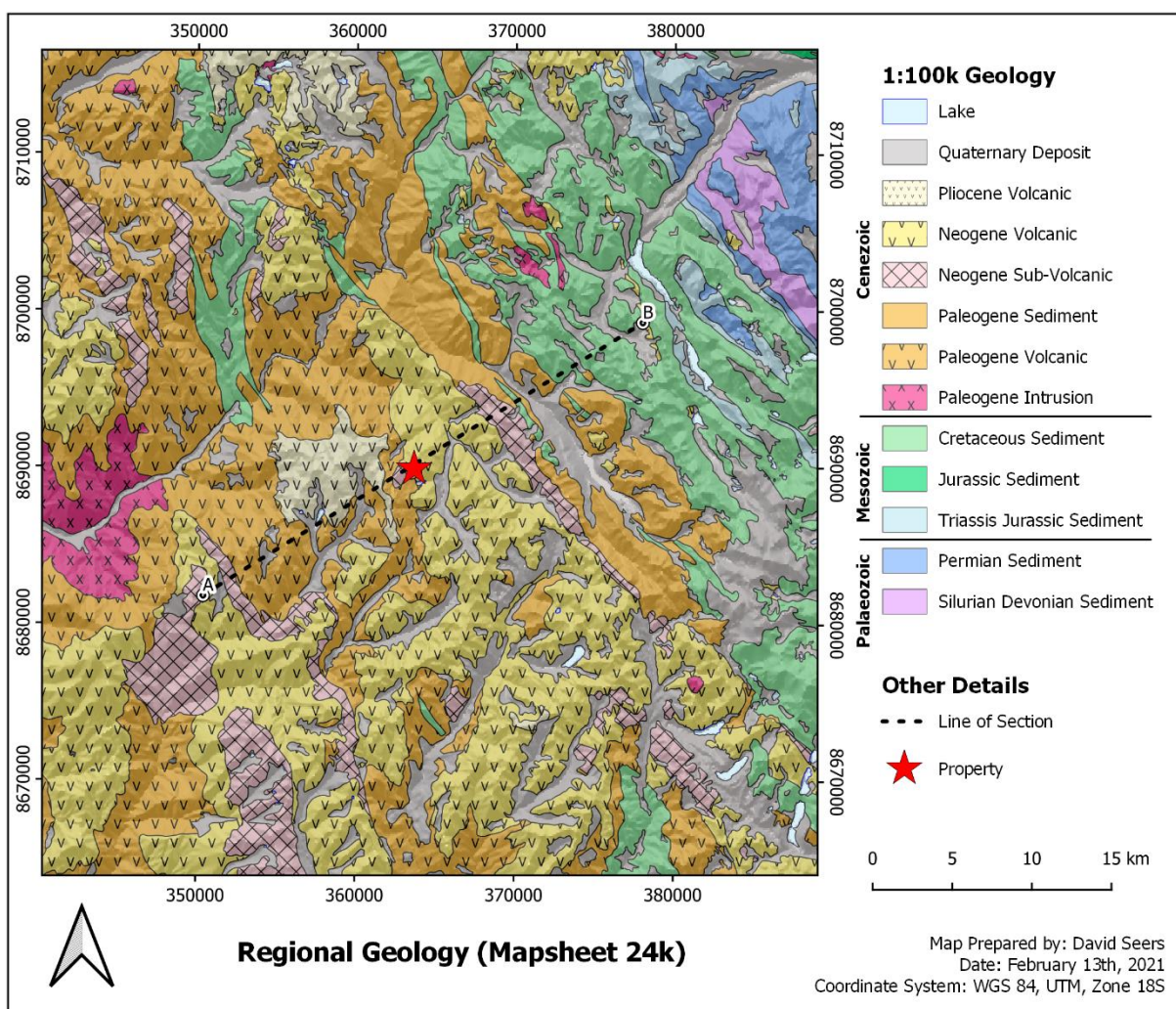


Figure 7-1: Regional Geology – Summarized from Mapsheet 24-K by Mr Seers (QP).

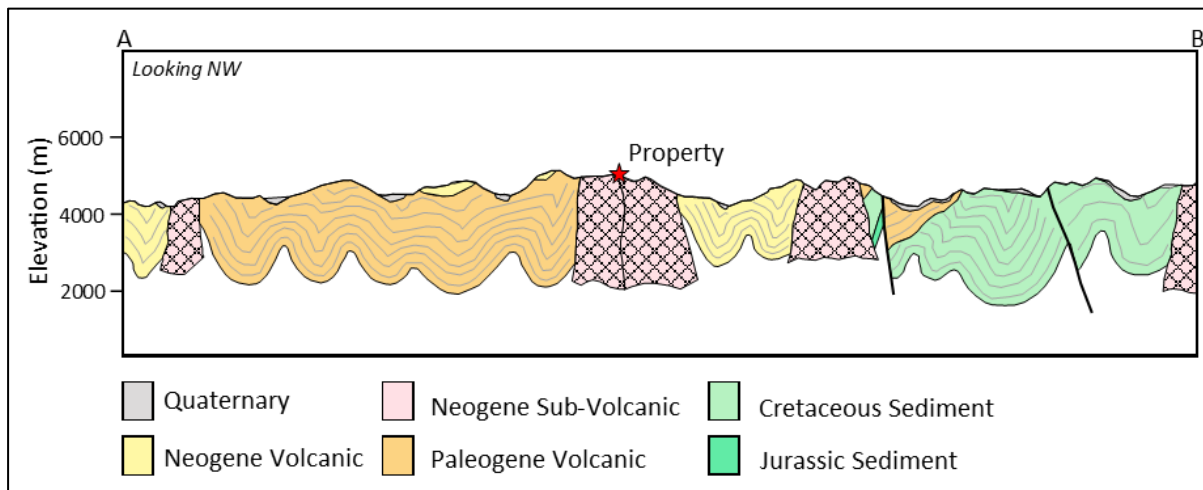


Figure 7-2: Simplified cross-section through regional geology. The line of section (A-B) is represented on Figure 7-1.

7.2 Local Geology

Local geology has been described based on 1:100k map sheet 24k “Matucana” and bulletin N° 36 “Geología de los Cuadrangulos de: Matucana y Huarochiri, Hojas 24-k y 25-k (Figure 7-3).

Tightly folded Mesozoic sediments (Jumasha Formation Limestone) are exposed to the northeast of the Property. Thick sequences of Cenozoic volcanics (flows, breccias and tuffs), deposited over Mesozoic sediments, dominate local geology.

A northwest trending band of the andesite-dacite Millotingo Formation (Miocene) volcanics has been down-dropped is marked by the introduction of rhyodacite and diorite bodies at its margins.

Folded Mesozoic sediments are exposed to the northeast of the Millotingo volcanics along with volcano-sediments of the Carlos Francisco Formation (Eocene). Southwest of the Millotingo volcanics, andesitic volcanics of the Rimac formation (Palaeocene) and Pacococha volcanics (Pliocene) have been exposed.

Quaternary deposits of fluvio-glacial and glacial sediments are deposited along valley sides and bottoms throughout the area.

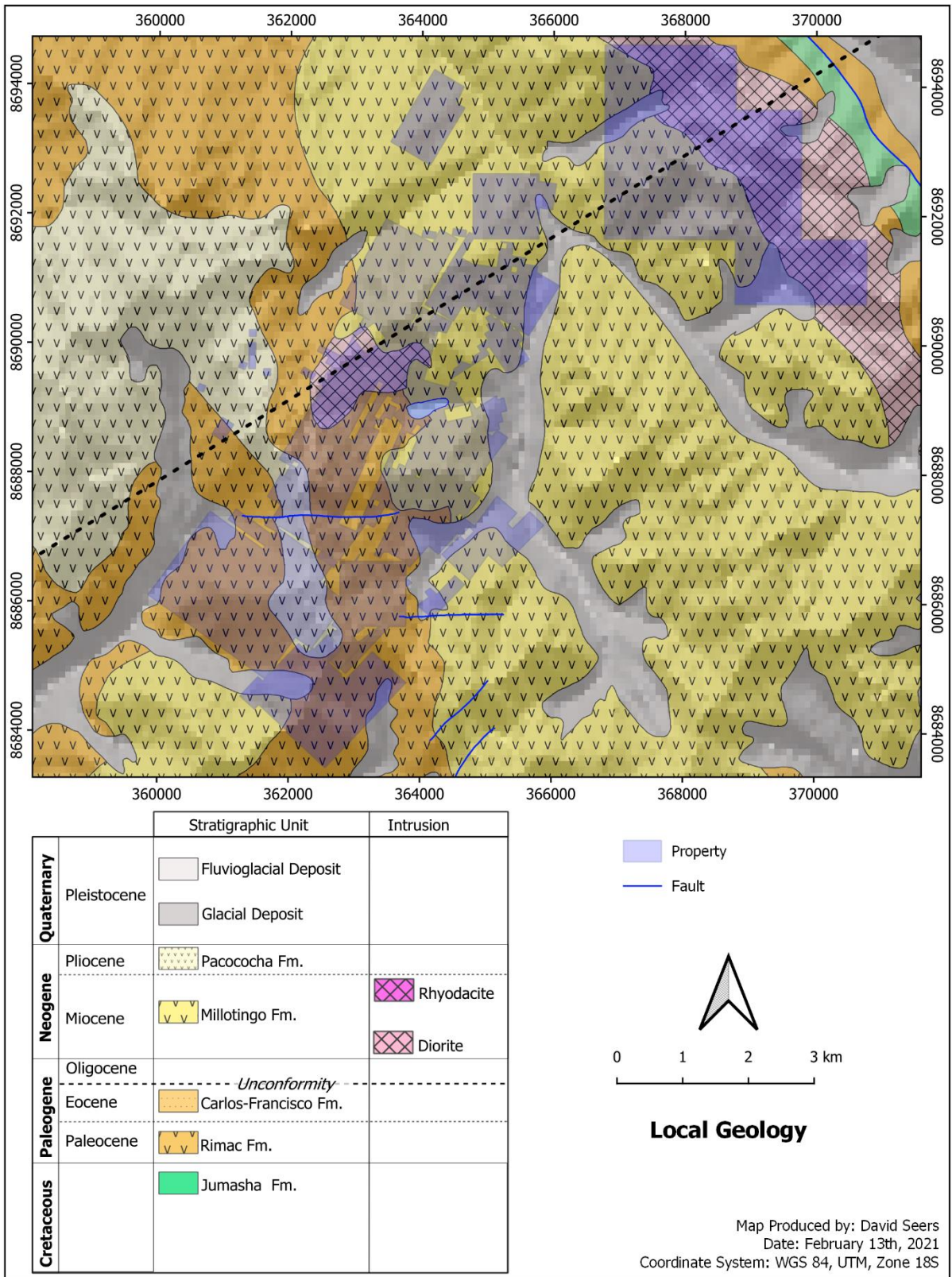


Figure 7-3: Local Geology

7.3 Property Geology

Mr Seers (QP) has not been able to undertake a personal inspection of the Property and has not independently reviewed the Property Geology.

As soon as access to the Property is possible, Sierra will arrange for Mr Seers (QP) to undertake a personal inspection of the Property and will issue the Technical Report with his observations.

8 Deposit Type

Mr Seers (QP) notes that the Property is situated in the Pacococha Mining District that is recognized for hosting polymetallic, quartz-carbonate, epithermal veins. Mineralization reported by Grenville Gold Corporation (now Sierra) (June 2007) is consistent with polymetallic quartz-carbonate, epithermal veins.

Mr Seers (QP) notes the following general characteristics of polymetallic epithermal veins:

- Potential for mineralization to extend hundreds of meters along strike and down-dip. Zones of structural opening are separated by zones of closure. Zones of structural opening may host zones of enhanced width and grade, and zones of closure may host reduced width and grade
- Mineralization in veins may be vertically zoned. Veins may be enriched in Au at higher elevations, transitioning to Ag, Pb and Zn at greater depth and Cu at even greater depth
- There is potential for wall rock around veins to host lower-grade mineralisation.

Mr Seers (QP) considers that the mineralised structures at the Property are likely to be polymetallic quartz-carbonate, epithermal veins and that these veins have significant potential to continue along strike and down dip.

9 Exploration

Mr Seers (QP) has compiled the following information from press releases:

In June 2007, the Issuer (known at the time as Grenville Gold Corporation) released highlight assay results for four grab samples taken from four veins at the Property (Table 9-1). Sample coordinates have not been reported.

Table 9-1: Historical Grab Samples (Reported June 2007)

Sample	Vein	Au g/t	Ag g/t	Cu %	Pb %	Zn %
PA-17	Germania	0.325	274	3.9	3.65	4.92
PA-21	Reserva	0.322	103	0.13	2.32	19.7
PA-28	Ernesto Segundo	0.717	2200	0.12	6.79	8.85
PA-34	Millotingo	2.63	401	0.01	0.04	0.07

Mr Seers (QP) notes the following:

- Grab samples are useful for identifying mineralisation but, as they are selective, grab samples are not indicative of wider mineralization
- The grades are within ranges typical of polymetallic epithermal veins in Peru.

In January 2010, the Issuer (known at the time as Grenville Gold Corporation) reported underground sample results for the Property (Table 9-2). The 345 level of the Reserva Vein was sampled, 56 channels were defined across the vein and 86 samples were taken with between one and three contiguous samples per channel. Sample coordinates have not been reported.

Table 9-2: Historical Grab Channel Samples (Reported January 2010)

Sample Line	Sample Count	Width (m)	Au g/t	Ag g/t	Zn %	Pb %
5	1	0.50	-	211.0	5.01	9.99
25	1	0.90	-	134.0	3.66	4.07
35	1	0.80	-	312.0	10.25	5.93
45	1	0.60	-	240.0	5.82	2.18
235	2	1.85	0.812	235.2	10.94	8.59
275	1	0.60	0.453	446.0	15.65	21.3

Mr Seers (QP) notes the following:

- Well taken chip channel samples across structure can provide reliable indications of mineralisation across structures
- Sample widths range between 0.5 and 1.85m, based on available information it is not possible to determine if these widths include wall rock beyond vein margins
- Of 86 samples taken 6 have been highlighted, it is reasonable to assume that samples that have not been reported have significantly lower grades and or widths than the reported samples.

10 Drilling

The Issuer has not undertaken any drilling at the Property.

There are no historical records of drilling at the Property.

11 Sampling Preparation, Analyses and Security

Mr Seers (QP) has not seen any records of sample preparation, analyses, and security, and he is not able to offer a qualified opinion on suitability.

Mr Seers (QP) notes that the January 15, 2010 press release detailing chip channel sampling states that ALS Chemex S.A.C. in Peru undertook the sample analyses and that ALS Chemex S.A.C. is an ISO 9001:2000 certified laboratory.

12 Data Verification

Mr Seers (QP) has undertaken the following steps to verify the data presented in the Technical Report:

- Reviewed documentation provided to him
- Referenced the INGEMMET's "GEOCATMIN" web portal to confirm Property concession details.

Mr Seers (QP) has not had access to the Property, and he is therefore not able to comment on the geology and mineralisation styles at the Property.

Mr Seers (QP) considers that the data contained in this report is sufficient to indicate the prospectivity of the Property, however significant further exploration is required before the economic potential of the Property can be assessed.

13 Mineral Processing and Metallurgical Testing

Mr Seers (QP) is not aware of any mineral processing or metallurgical testing of mineralization from the Property.

14 Mineral Resources Estimates

There is insufficient information to support a Mineral Resource Estimate for the Property.

23 Adjacent Properties

Mr Seers (QP) has not verified the information contained in Section 23 of the Report. Information included in Section 23 of the Report has been sourced from publicly available sources and is not necessarily indicative of the mineralisation on the Property.

Great Panther Mining Limited’s Coricancha Mine (currently under care and maintenance) is approximately 10km northwest of the Property. Coricancha hosts polymetallic quartz-carbonate veins in andesitic volcanics, the main vein has been exploited over 840m vertical extent and along strike for over 1,400m.

The Canapé project is approximately 5km south of the Silveria Property. Inca Minerals explored the Canapé project from epithermal gold-silver and porphyry copper-molybdenum-silver-gold systems. Mineralisation styles at Canapé includes brecciated bodies and altered intrusions.

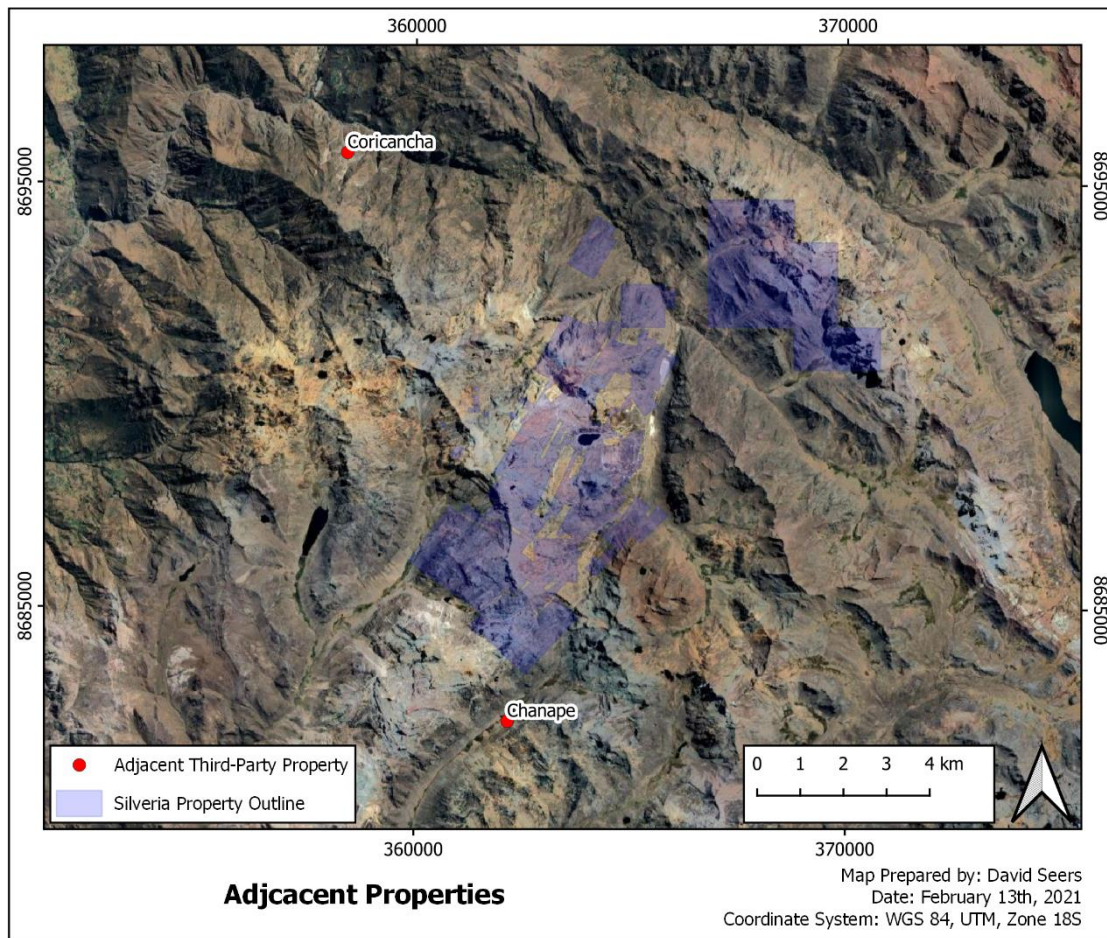


Figure 23-1: Adjacent Properties

24 Other Relevant Data and Information

Mr Seers (QP) believes all available information relevant to the accurate understanding of the Property is included within this Technical Report.

25 Interpretation and Conclusions

Mr Seers (QP) concludes the following:

- The Property is in the regionally prospective metallogenic belt XX1-A and Pacococha Mining District recognized for hosting polymetallic epithermal veins
- The Property hosts multiple epithermal veins, records indicate that at least four of these veins have been exploited
- Historical mining at the Property demonstrates continuity of mineralised structures over significant strike and vertical distances
- The concessions that make up the Property are interrupted by third-party concessions; a single mineralised structure may extend across concessions held by multiple owners. This could complicate any future operational plans
- Social and community issues are a known complication in the area including at the Property, if these issues are not overcome it will not be possible to determine the economic potential of the Property
- Exploration at the Property is limited and has not tested potential extensions of veins beyond historical workings
- There is significant potential to identify extensions of known structures along strike and to depth
- There is potential to identify lower grade disseminated mineralisation in volcanic plugs.

26 Recommendations

Mr Seers (QP) highlights that the Issuer has sold the Property, for this reason he has not presented budgeted exploration programs. Notwithstanding this, he recommends consultation to determine the social and community issues related to the Property and how they can be overcome. The Dirección Regional de Energía y Minas (DREM) in Lima should be consulted in this regard.

Assuming access to the Property can be negotiated the following programs are recommended:

- Enter safely accessible mine workings to map veins and to determine relative sizes and endowment of vein structures and if any mineralisation remain in-situ
- Determine the cost to remediate legacy environmental liabilities.

27 References

Mr Seers (QP) used the following references when compiling the Technical Report:

Regional Mapping

Geological mapping published by the Instituto Geológico Minero y Metalúrgico (INGEMMET), part of Peru's Ministry of Energy and Mines (MINEM)

- 1:100k map sheet 24k "Matucana"
- Boletín N° 36 "Geología de los Cuadrangulos de: Matucana y Huarochiri, Hojas 24-k y 25-k"

Press Releases

Various press releases by the Issuer (Sierra, previously Grenville), available via Sedar (<https://sedar.com/>)

- January 18, 2006
- June 4, 2007
- February 5, 2008
- November 14, 2008
- January 15, 2010
- December 23, 2010
- February 25, 2019
- October 27, 2020

Webpages

- GEOCATMIN web-portal (<http://geocatmin.ingemmet.gob.pe/geocatmin/>)
- Sierra Growth Corp. (<https://www.sierragrowth.com/>)