

December 11, 2023
For Immediate Release

CSE: **RFR**
OTCQB: **RFHRF**

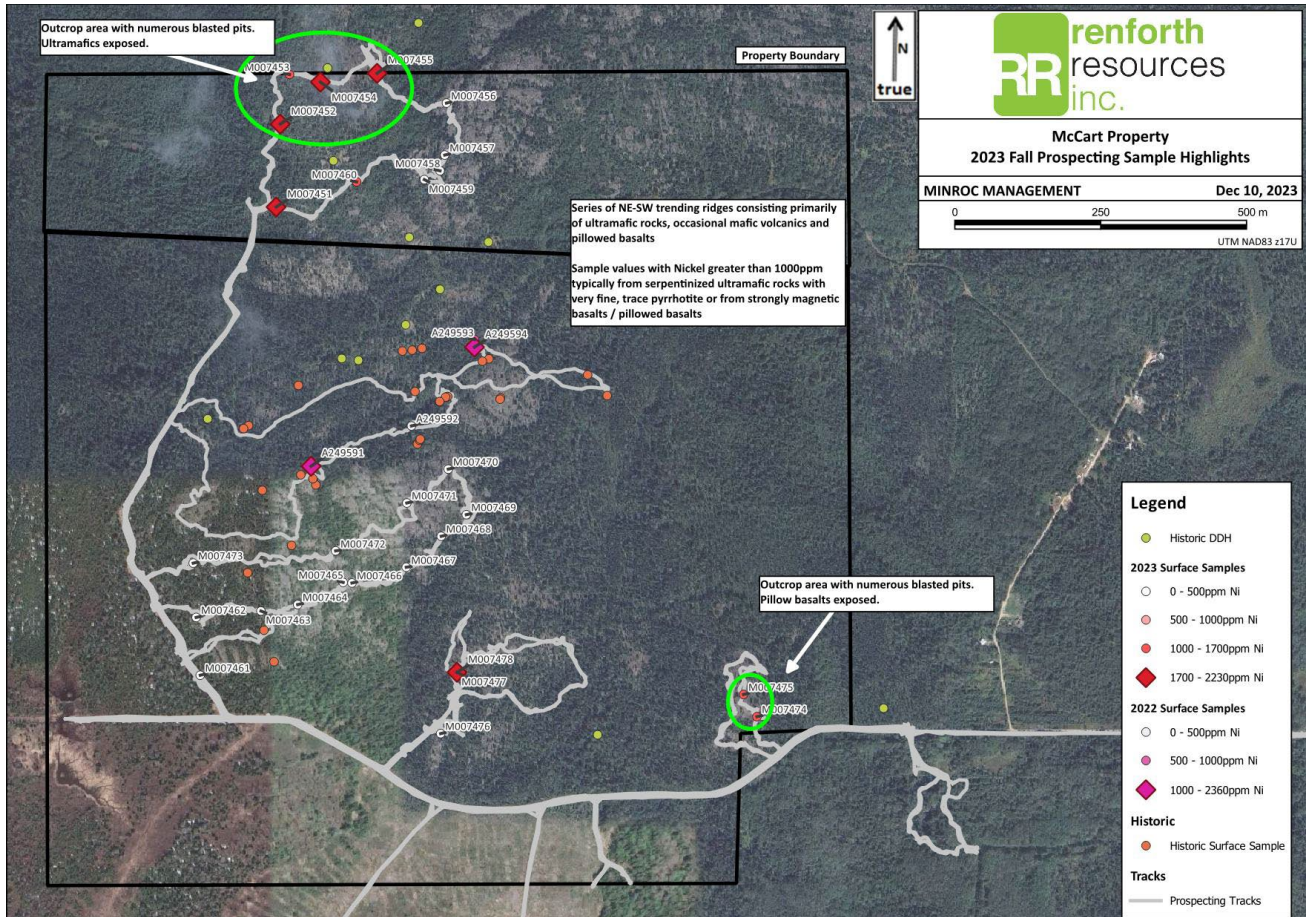
McCart Yields Ontario Surface Nickel Numbers, End of Last Hole on Victoria in Quebec Surprises with Unexpected Mineralized Occurrences

Renforth Resources Inc. (CSE – RFR) (OTCQB– RFHRF) (FSE-9RR) (“Renforth” or the “Company”) would like to update shareholders on successful recent nickel prospecting on the McCart Property, near Iroquois Falls Ontario and the unexpected, mineralized occurrences at the very end of the last drill hole on Victoria.

McCart Sampling Program Results

The McCart claims lie atop a thick ultramafic sequence. The large, broad ridges expose komatiites, peridotites and dunites, and run approximately NE-SW. Pillowed basalts are exposed in the southeastern area of the property. The ridge in the northern part of the property contains numerous blasted pits and trenches in a broad area along and across the northern property boundary. Additional blasted trenches and pits were found in the southeastern corner of the property as well. Samples taken during the Fall 2023 Prospecting program consisted primarily of ultramafic and mafic units with very fine sulfide mineralization. Twenty-eight samples were taken during the program, of which 10 samples returned assay values greater than 1000ppm Ni. Five samples were in the range of 1700-2230ppm Ni, with 2230ppm Ni from Sample M007452 being the highest assay value of this program.

Sample numbers	UTM E	UTM N	Sample description	Co ppm	Cu ppm	Ni ppm	Zn ppm
M007451	508660	5402687	Coarse grained, deeply weathered ultramafic, dark green with round grey-white albite crystals. Orange fractures (fe-carb and fe staining). Weak to mod mag, shallow dip, cannot measure	164.5	80.2	1955	12
M007452	508667	5402829	Coarse grained, weathered ultramafic, dark green with round grey-white albite crystals. Orange fractures (fe-carb and fe staining). Weak to mod mag, foliated at 239/3deg NW	105	3.5	2230	20
M007453	508683	5402914	mafic volcanic, very fine grained, massive, mod to strong mag, blue-grey colour. Basalt? Trace to 1% very fine disseminated pyrite throughout, rare <1mm serpentine stringers/fractures throughout	111	4.9	1665	30
M007454	508736	5402901	mafic volcanic, fine grained, massive, mod to strong mag, blue-grey colour. Basalt? rare <1mm serpentine stringers/fractures throughout	93.6	2.5	1710	59
M007455	508833	5402916	Fine grained maf vol/umaf, blue green colour fine 1-5mm serpentine fractures/stringers throughout, strong mag, no visible sulfide	101.5	1.9	1705	26
M007460	508798	5402730	maf vol, fine grained, dark-black colour, pyroxene-rich+trace fine po, mod-str mag, massive	124	75.4	1255	31
M007474	509484	5401814	pillow basalt, fine to med grained, dark green colour, massive, serpentine fractures and stringers (1-3mm thick). Trace to 1% Po, very strongly magnetic.	140.5	18.1	1070	60
M007475	509461	5401852	pillow basalt, fine to med grained, dark green colour, massive, serpentine fractures and stringers (1-5cm thick), very strongly magnetic.	105.5	52.3	1205	26
M007477	508970	5401890	massive serpentine vein oriented 250/80Nm dark green colour, strong mag, vein approx. 5-10cm thick. Serpentinite?	127	25	1665	63
M007478	508970	5401890	Host to serpentine vein, massive, blue-green colour, mod mag. Pillow basalt.	116.5	35	1910	43

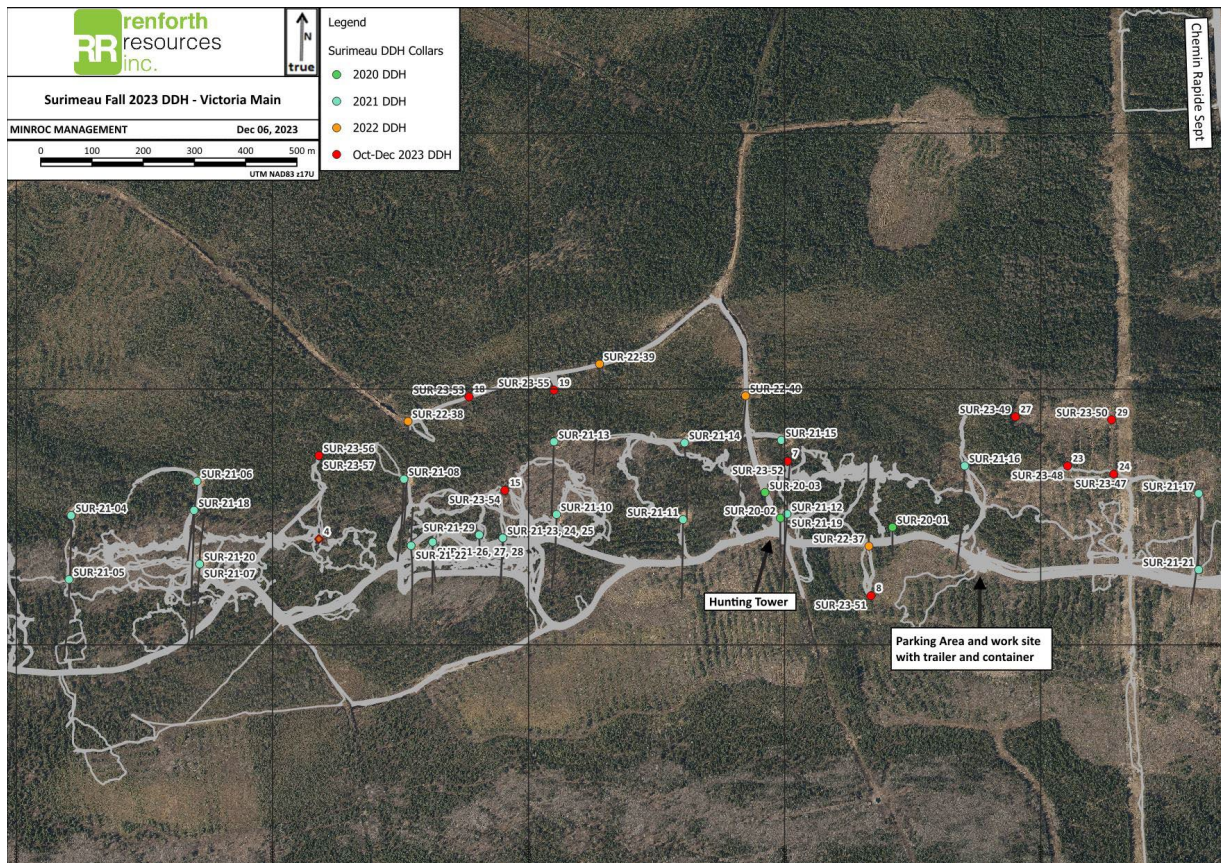


Victoria Drill Program Final Hole

The last hole drilled at Victoria was continued, in typical fashion, to the sedimentary contact at the bottom of the hole. As the three mineralized horizons had already been intersected, undercutting, and continuing the mineralization encountered in the prior, shallower, hole SUR-23-56 down dip, there was little expectation of the end of this hole.

Two additional mineralized occurrences were found at the end of hole SUR-23-57 in two forms. The first is within the typical blue/green ultramafics, which as deep as 373m down the hole included dark grey-black bands of graphite and magnetite which returned mineralized values in XRF testing. The second occurrence is a zone of very intense carbonate-plagioclase alteration and recrystallization from 296.6-300.15m, only seen once before in any of Renforth's drilling at Victoria in SUR-21-16, significantly east of this hole.

"Ending our program with bonus mineralization at the end of the hole is of course exciting, but also illustrates that we have not yet defined what Victoria is, it keeps getting better. We look forward to our assays coming back in the new year and planning our next work on this exciting, large scale mineralized property that keeps on growing. The potential we see on our 100% owned, 20km long Victoria mineralized structure is significant" states Nicole Brewster, President and CEO of Renforth.



About Renforth

Renforth is a battery metals area play with the dominant brownfield land position south of the world class Cadillac-Larder Lake Fault ("CLLF") in the prolific Cadillac and Malartic mining camps of Quebec's

Abitibi. Offering exposure to gold, zinc, nickel, copper, cobalt and more, including lithium, Renforth's land position encompasses several areas of interest.

Renforth's position is unique in that the both the battery metals mineralization at Surimeau and our gold deposit at Parbec are road accessible, with hydro power crossing the properties, in an established and secure mining jurisdiction which regularly ranks as Top 10 (as determined by the Fraser Institute) in the world.

Renforth is engaged in the active exploration of the proven Surimeau battery metals mineralization, working towards a maiden resource statement, and the remodeling of our Parbec gold deposit to incorporate the ~15,000m drilled subsequent to the 2019 effective date of the last MRE.

Technical disclosure in this press release has been reviewed and approved by Francis R. Newton PGeo, OGQ a "qualified person" pursuant to NI 43-101.

For further information please contact:

Renforth Resources Inc.

Nicole Brewster

President and Chief Executive Officer

C:416-818-1393

E: nicole@renforthresources.com

#Unit 1B – 955 Brock Road, Pickering ON L1W 2X9

Follow Renforth on Facebook, LinkedIn and Instagram!

No securities regulatory authority has approved or disapproved of the contents of this news release.

Forward Looking Statements

This news release contains forward-looking statements and information under applicable securities laws. All statements, other than statements of historical fact, are forward looking. Forward-looking statements are frequently identified by such words as 'may', 'will', 'plan', 'expect', 'believe', 'anticipate', 'estimate', 'intend' and similar words referring to future events and results. Such statements and information are based on the current opinions and expectations of management. All forward-looking information is inherently uncertain and subject to a variety of assumptions, risks and uncertainties, including the speculative nature of mineral exploration and development, fluctuating commodity prices, the risks of obtaining necessary approvals, licenses and permits and the availability of financing, as described in more detail in the Company's securities filings available at www.sedar.com. Actual events or results may differ materially from those projected in the forward-looking statements and the reader is cautioned against placing undue reliance thereon. Forward-looking information speaks only as of the date on which it is provided, and the Company assumes no obligation to revise or update these forward-looking statements except as required by applicable law.