



FOR IMMEDIATE RELEASE

Nov 22, 2022

TSX-V: WIN, OTCQB: WINKF, FSE: L72C

PUMA EXPLORATION RENEWS PARTNERSHIP WITH WINDFALL GEOTEK TO IDENTIFY HIGH PROBABILITY TARGETS

DOES NOT CONSTITUTE AN OFFER OF THE SECURITIES DESCRIBED HEREIN

Brossard, Quebec / The Newswire / Nov 22nd, 2022 – Windfall Geotek (TSX-V: WIN, OTCQB: WINKF, FSE: L7C2) a leader in the use of Artificial Intelligence (AI) with advanced knowledge-extraction techniques since 2005 in the mining sector is pleased to announce that it has conducted a large scale AI targeting project of PUMA Exploration Inc's (TSX-V:PUMA) William's Brook Gold Property. 22 AI Targets were generated based on 3 different AI targeting models.

Table 1: AI Williams Brook Project gold targets list, Model 1

Nr	Target ID	X (Center) Nad83 UTM19	Y (Center) Nad83 UTM19	Area (sqkm)	Perimt. (km)	NTS Sheet	Geology (NB)
1	AI_Puma_WB_Model_1_Au_01	661610	5264550	0.018	0.602	21O10	Felsic Volcanic; Deep Water Clastic
2	AI_Puma_WB_Model_1_Au_02	661291	5264420	0.012	0.434	21O10	Felsic Volcanic
3	AI_Puma_WB_Model_1_Au_03	661387	5264720	0.018	0.580	21O10	Felsic Volcanic
4	AI_Puma_WB_Model_1_Au_04	661908	5265010	0.019	0.598	21O10	Felsic Volcanic
5	AI_Puma_WB_Model_1_Au_05	662340	5265710	0.006	0.305	21O10	Deep Water Clastic
6	AI_Puma_WB_Model_1_Au_06	661263	5259570	0.028	0.887	21O07	Mafic Volcanic
7	AI_Puma_WB_Model_1_Au_07	661035	5259270	0.006	0.304	21O07	Mafic Volcanic

8	AI_Puma_WB_Model_1_Au_08	660899	5259030	0.014	0.488	21O07	Mafic Volcanic; Deep Water Clastic
---	--------------------------	--------	---------	-------	-------	-------	--

Table 2: AI Williams Brook Project gold targets list, Model 2a

Nr	Target ID	X (Center) Nad83 UTM19	Y (Center) Nad83 UTM19	Area (sqkm)	Perimt. (km)	NTS Sheet	Geology (NB)
1	AI_Puma_WB_Model_2a_Au_01	661626	5264730	0.056	1.371	21O10	Felsic Volcanic
2	AI_Puma_WB_Model_2a_Au_02	661560	5264520	0.008	0.364	21O10	Felsic Volcanic; Deep Water Clastic
3	AI_Puma_WB_Model_2a_Au_03	661290	5264420	0.005	0.301	21O10	Felsic Volcanic
4	AI_Puma_WB_Model_2a_Au_04	661864	5265000	0.006	0.303	21O10	Felsic Volcanic
5	AI_Puma_WB_Model_2a_Au_05	662295	5265720	0.009	0.351	21O10	Felsic Volcanic; Deep Water Clastic
6	AI_Puma_WB_Model_2a_Au_06	658575	5262290	0.028	0.859	21O07	Terrestrial Sediments
7	AI_Puma_WB_Model_2a_Au_07	680877	5266440	0.032	1.173	21O10	Mafic Intrusion

Table 3: AI Williams Brook Project gold targets list, Model 2b

Nr	Target ID	X (Center) Nad83 UTM19	Y (Center) Nad83 UTM19	Area (sqkm)	Perimt. (km)	NTS Sheet	Geology (NB)
1	AI_Puma_WB_Model_2b_Au_01	661676	5264710	0.097	1.421	21O10	Felsic Volcanic; Deep Water Clastic
2	AI_Puma_WB_Model_2b_Au_02	679488	5265610	0.020	0.554	21O10	Terrestrial Sediments
3	AI_Puma_WB_Model_2b_Au_03	683078	5267140	0.013	0.484	21O10	Deep Water Clastic

Table 4: AI Williams Brook Project gold targets list, Model 3

Nr	Target ID	X (Center) Nad83 UTM19	Y (Center) Nad83 UTM19	Area (sqkm)	Perimt. (km)	NTS Sheet	Geology (NB)
1	AI_Puma_WB_Model_3_Au_01	659999	5258190	0.150	1.749	21O07	Deep Water Clastic
2	AI_Puma_WB_Model_3_Au_02	653953	5262020	0.068	1.111	21O07	Deep Water Clastic
3	AI_Puma_WB_Model_3_Au_03	658546	5262580	0.047	0.978	21O07	Terrestrial Sediments
4	AI_Puma_WB_Model_3_Au_04	669752	5266500	0.054	1.045	21O10	Deep Water Clastic

Dinesh Kandanchatha, Chairman of Windfall Geotek commented: *“Our unique technology achieves maximum leverage when we partner for multiple years with our clients. We have supported Puma as they develop their project, refining their thinking and exploration plan with our digital solutions.”*

Marcel Robillard, CEO of Puma Exploration commented: “Puma uses all the best available scientific tools to generate exploration targets and prioritize them. The proprietary AI algorithm of Windfall Geotek is one of them and the large set of digital data Puma has assembled over the years makes it perfect for the use of AI. PUMA has already begun exploring some of these Windfall targets”

The scientific and technical data contained in this press release was reviewed and prepared under the supervision of Grigor Heba, Ph.D., P.Geo., Principal Geologist and a Qualified Person as defined by National Instrument 43-101.

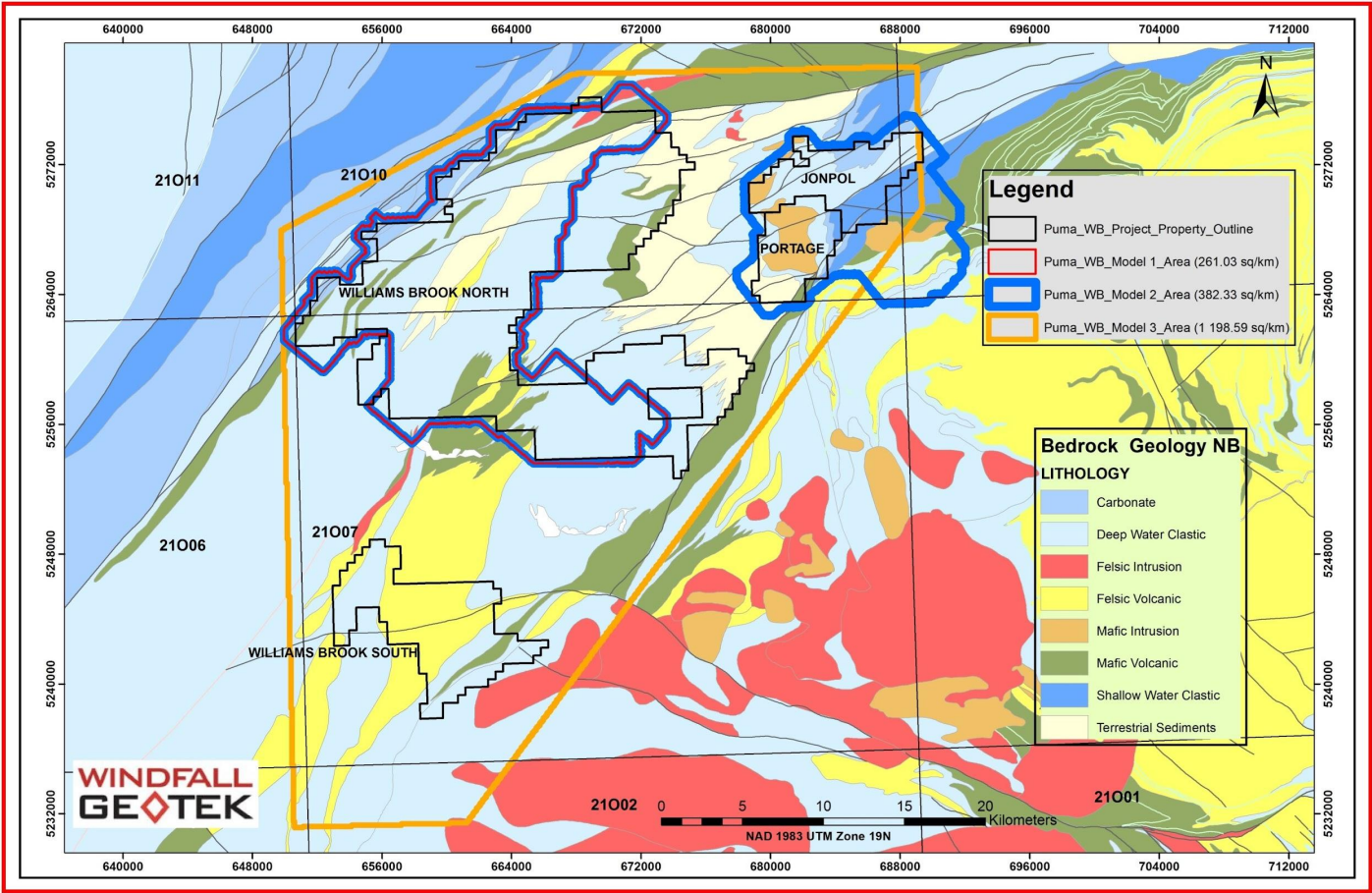


Figure 1: Williams Brook Project Outline & AI Target Areas

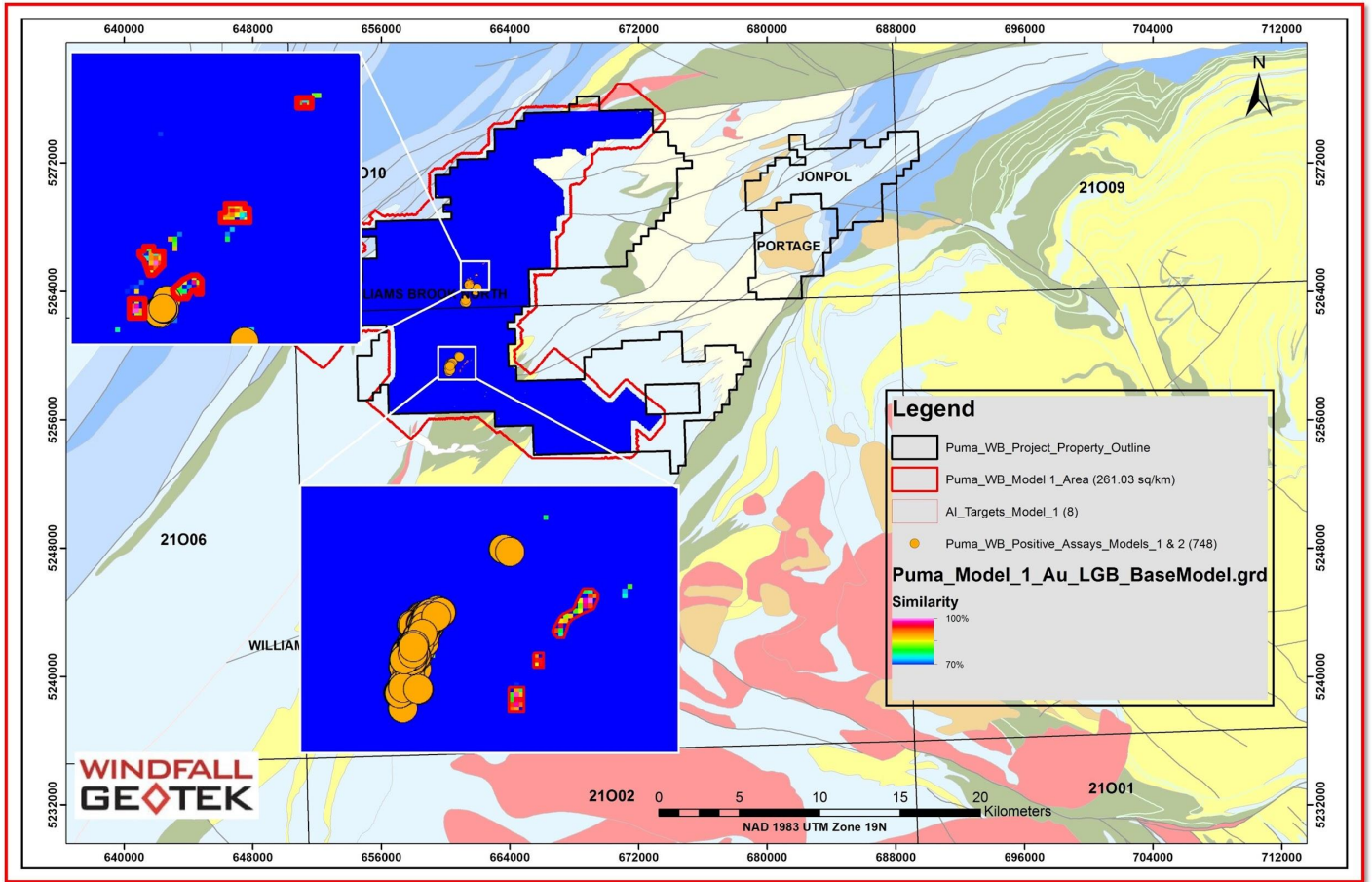


Figure 2: Williams Brook Project - AI Target Model 1

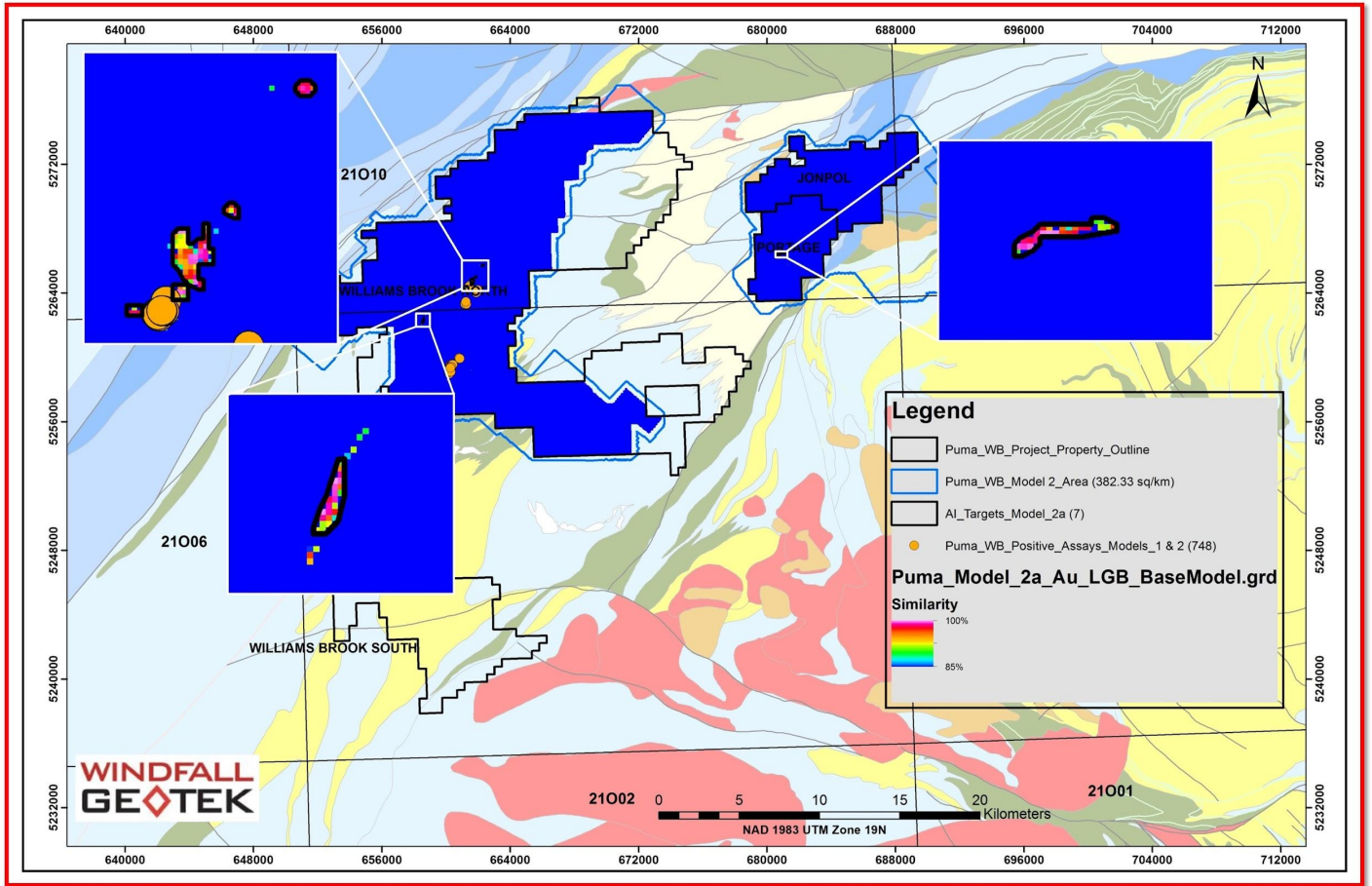


Figure 3: Williams Brook Project - AI Target Model 2A

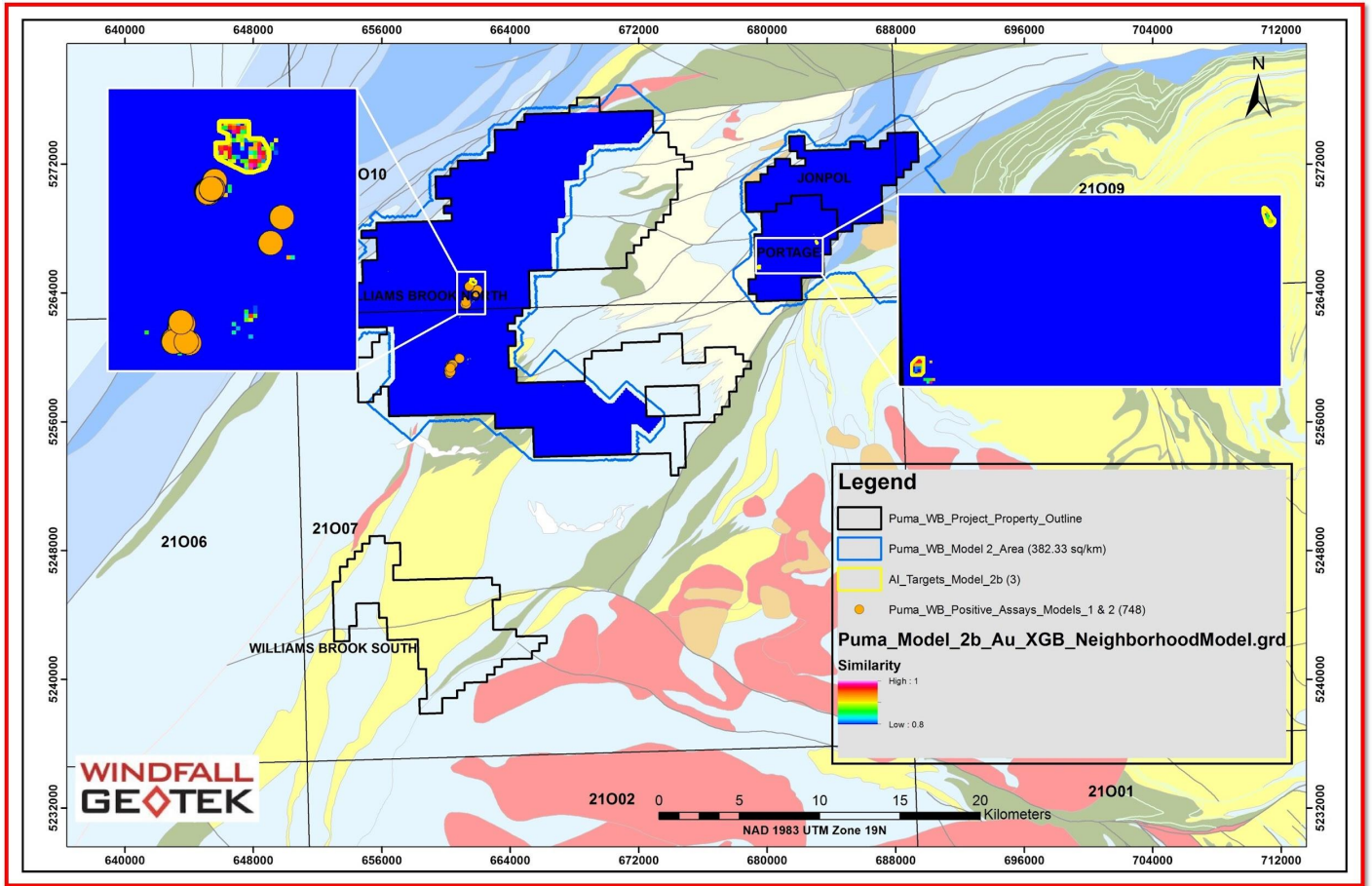


Figure 4: Williams Brook Project - AI Target Model 2B

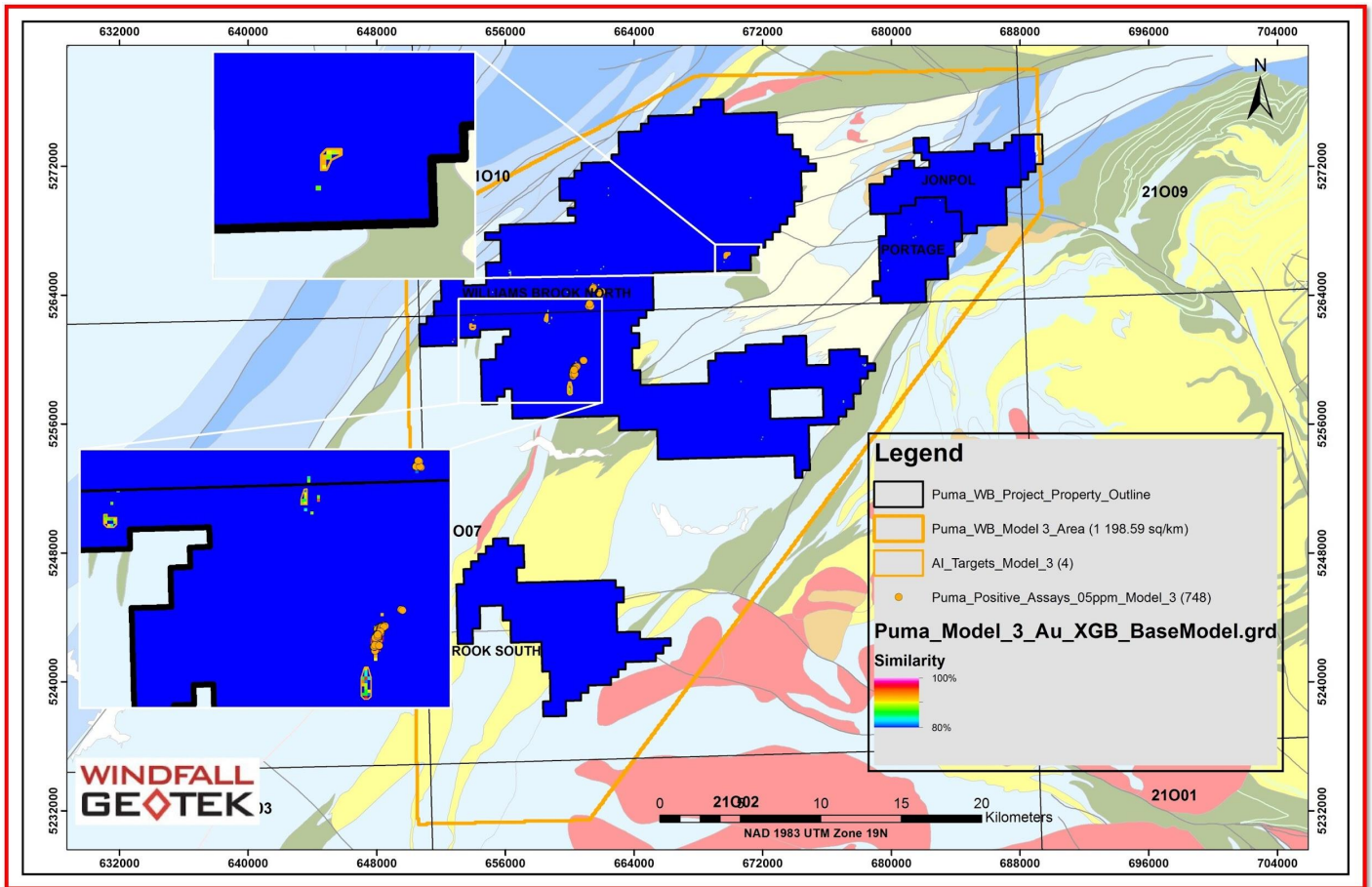


Figure 5: Williams Brook Project - AI Target Model 3

About Windfall Geotek – Powered by Artificial Intelligence (AI) since 2005

Windfall is an Artificial Intelligence company that has been in business for over 15 years developing its proprietary CARDS analysis (AI) and data mining techniques. Windfall Geotek can count on a multidisciplinary team that includes professionals in geophysics, geology, Artificial Intelligence, and mathematics. It combines available public and private datasets including geophysical, drill hole and surface data. The algorithms designed and employed by Windfall are calculated to highlight areas of interest that have the potential to be geologically similar to other gold deposits and mineralization. The Company's objective is to develop a new royalty stream by significantly enhancing and participating in the exploration success rate of mining and to continue the Land Mine detection application as a high priority. Windfall has played a part in numerous past discoveries utilizing its methodology as described at: <https://windfallgeotek.com/>.

For further information, please contact:

Simran Kamboj

President and CTO of Windfall Geotek

Email: simran@windfallgeotek.com

Website: www.windfallgeotek.com

Additional information about the Company is available under Windfall Geotek's profile on SEDAR at www.sedar.com. Neither the TSX Venture Exchange nor does its Regulation Services Provider (as that term is defined in the policies of the TSX Venture Exchange) accept responsibility for the adequacy or accuracy of this release.

FORWARD-LOOKING STATEMENTS: This news release contains forward-looking statements, which relate to future events or future performance and reflect management's current expectations and assumptions. Such forward-looking statements reflect management's current beliefs and are based on assumptions made by and using information currently available to the Company. Investors are cautioned that these forward-looking statements are neither promises nor guarantees, and they are subject to risks and uncertainties that may cause future results to differ materially from those expected. These forward-looking statements are made as of the date hereof and, except as required under applicable securities legislation, the Company does not assume any obligation to update or revise them to reflect new events or circumstances. All forward-looking statements made in this press release are qualified by these cautionary statements and by those made in our filings with SEDAR in Canada (available at WWW.SEDAR.COM).