

WINDFALL GEOTEK GENERATES HIGH PROBABILITY AI EXPLORATION TARGETS FOR MACDONALD MINES SPJ GOLD PROJECT NEAR SUDBURY, ONTARIO

DOES NOT CONSTITUTE AN OFFER OF THE SECURITIES DESCRIBED HEREIN

Highlights:

- New high priority targets identified outside of known mineralization near the former Scadding Gold Mine
- Windfall Geotek's AI targets will help accelerate MacDonald Mines exploration programs
- The SPJ Project comprises 19,380 hectares in the Davis, Street and Scadding Townships, 40 kilometres East of Sudbury, Ontario and close to key infrastructure (rail, road, power, qualified workforce) and in a mining friendly jurisdiction.
- The SPJ project is unique due to it's high grades & potential to be a large scale IOCG System.

Brossard, Quebec / The Newswire / December 16th, 2021 – Windfall Geotek Inc. (TSX-V: WIN, OTCQB: WINKF, FSE: L7C2) a leader in the use of Artificial Intelligence (AI) with advanced knowledge-extraction techniques since 2005 in the mining sector and is pleased to announce it has provided and completed it's AI Mineral Exploration targeting services for MacDonald Mines Exploration Ltd (TSX-V:BMK) for it's SPJ Gold Project located North East of Sudbury, Ontario.

Windfall Geotek generated 18 new high priority AI targets for further exploration work to assist MacDonald Mines future exploration programs. The AI analysis showed significant upside potential with high probability AI targets outside of the already known high grade gold areas in & around the Scadding mine.

Project Highlights

- 18 priority AI targets identified (Figure 1,2,3,4)
- The work comprised of more than 1 million data points in a surface area of 264.7km²
- Windfall Geotek was able to locate old historical showings in which data points were not available showing significant accuracy and significance of drill targets.

Geological Context

The McDonald Mines's SPJ Project is a gold-rich iron-oxide-copper-gold (IOCG) property located 20 km northeast of Sudbury, Ontario, Canada.

Regionally, the SPJ Project is located within the Paleoproterozoic Huronian Supergroup of the Southern Province, which consists of a series of steeply dipping metasedimentary rocks with subordinate metavolcanic rocks. Intrusive rocks in the region include the Cutler, Killarney, and Chief Lake granitic intrusions, while the mafic intrusions include the Nipissing diabase suite, the East Bull Lake intrusion-type and the Sudbury Igneous Complex.

Primary Target Model List

Nr	Gold_Target_ID	X_Center Nad83_UTM _17N	Y_Center Nad83_UTM _17N	Area (sq- km)	Perimeter (km)	NTS Sheet	Geol_OGS
1	PT1	527224	5167430	0.036	0.76	41I10	Quartz-feldspar sandstone, argillite and conglomerate
2	PT2	530309	5170690	0.020	0.57	41I10	Conglomerate, sandstone, siltstone, argillite
3	PT3	527736	5171690	0.029	0.69	41I10	Quartz-feldspar sandstone, argillite and conglomerate
4	PT4	527899	5171640	0.032	0.80	41I10	Quartz-feldspar sandstone, argillite and conglomerate
5	PT5	536210	5168600	0.049	0.89	41I10	Conglomerate, sandstone, siltstone, argillite; Mafic and related intrusive rocks and mafic dikes
6	PT6	536490	5168310	0.019	0.55	41I10	Mafic and related intrusive rocks and mafic dikes
7	PT7	538821	5167430	0.029	0.71	41I09	Mafic and related intrusive rocks and mafic dikes
8	PT8	535998	5167670	0.009	0.38	41I10	Conglomerate, sandstone, siltstone, argillite
9	PT9	535588	5166190	0.009	0.40	41I10	Conglomerate, sandstone, siltstone, argillite

Secondary Target Model List

Nr	Gold_Target_ID	X_Center Nad83_UT M_17N	Y_Center Nad83_UTM _17N	Area (sq- km)	Perimeter (km)	NTS Sheet	Geol_OGS
1	ST1	534882	5166700	0.015	0.50	41I10	Conglomerate, sandstone, siltstone, argillite

2	ST2	536790	5165990	0.035	0.77	41110	Conglomerate, sandstone, siltstone, argillite
3	ST3	537669	5166870	0.033	0.74	41110	Conglomerate, sandstone, siltstone, argillite
4	ST4	537428	5170620	0.048	0.91	41110	Conglomerate, sandstone, siltstone, argillite
5	ST5	538778	5171410	0.013	0.47	41109	Conglomerate, sandstone, siltstone, argillite
6	ST6	538881	5171500	0.004	0.25	41109	Conglomerate, sandstone, siltstone, argillite
7	ST7	539010	5172200	0.008	0.36	41109	Conglomerate, sandstone, siltstone, argillite
8	ST8	539221	5170690	0.020	0.61	41109	Conglomerate, sandstone, siltstone, argillite
9	ST9	539079	5168550	0.012	0.45	41109	Conglomerate, sandstone, siltstone, argillite

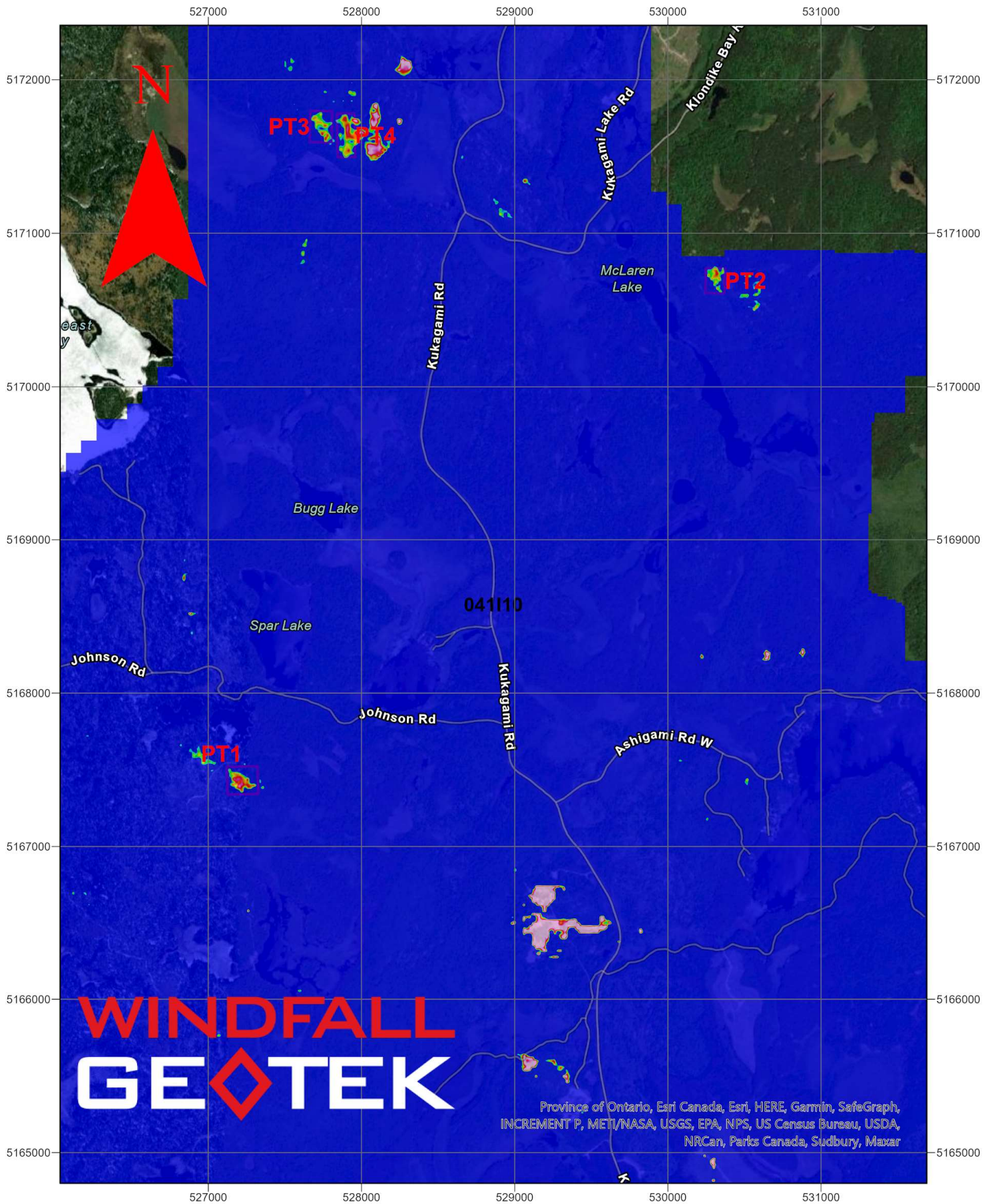


Figure 1: Primary Model - Western Portion of SPJ Project

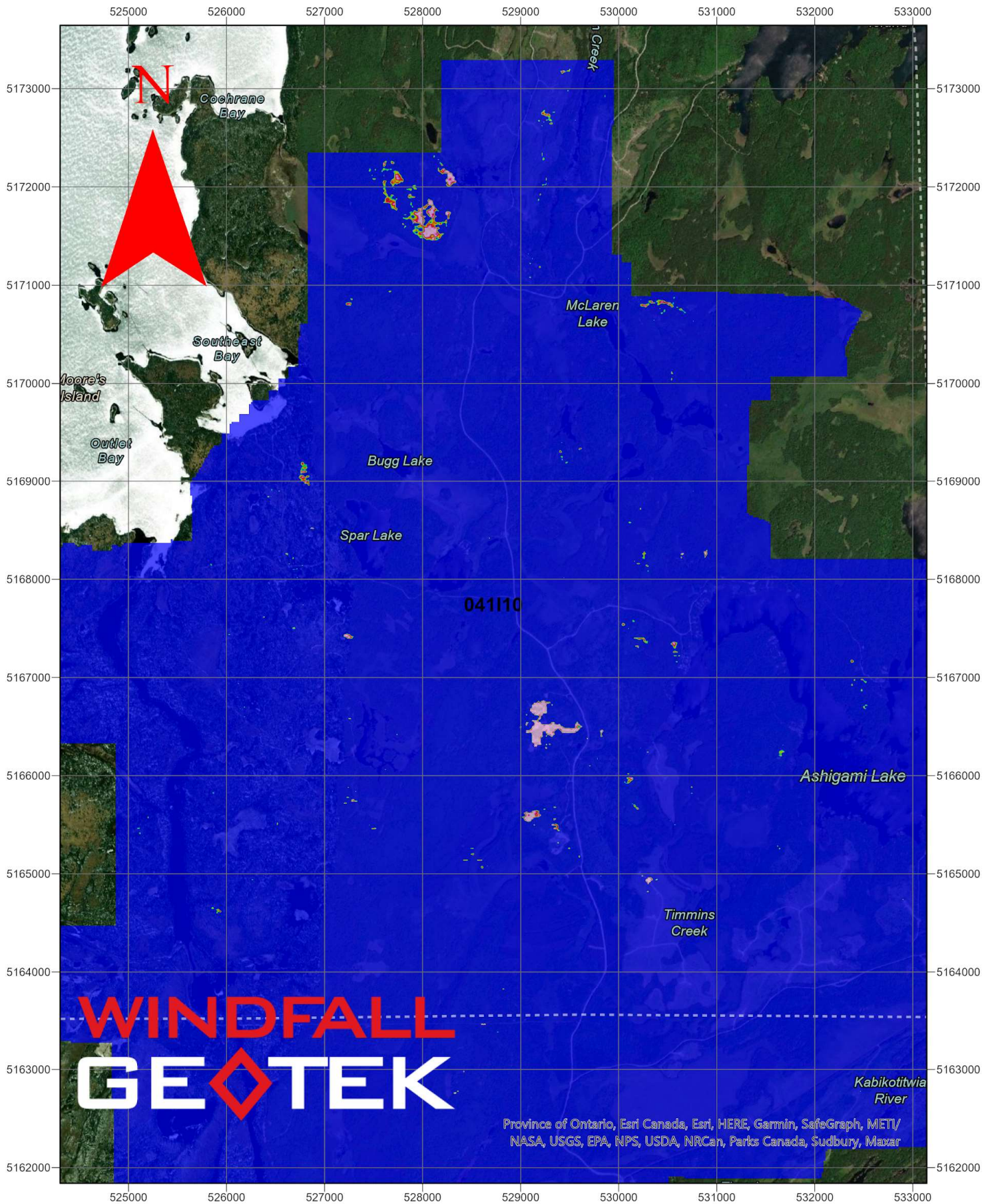


Figure 2: Secondary Model - Western Portion of SPJ Project

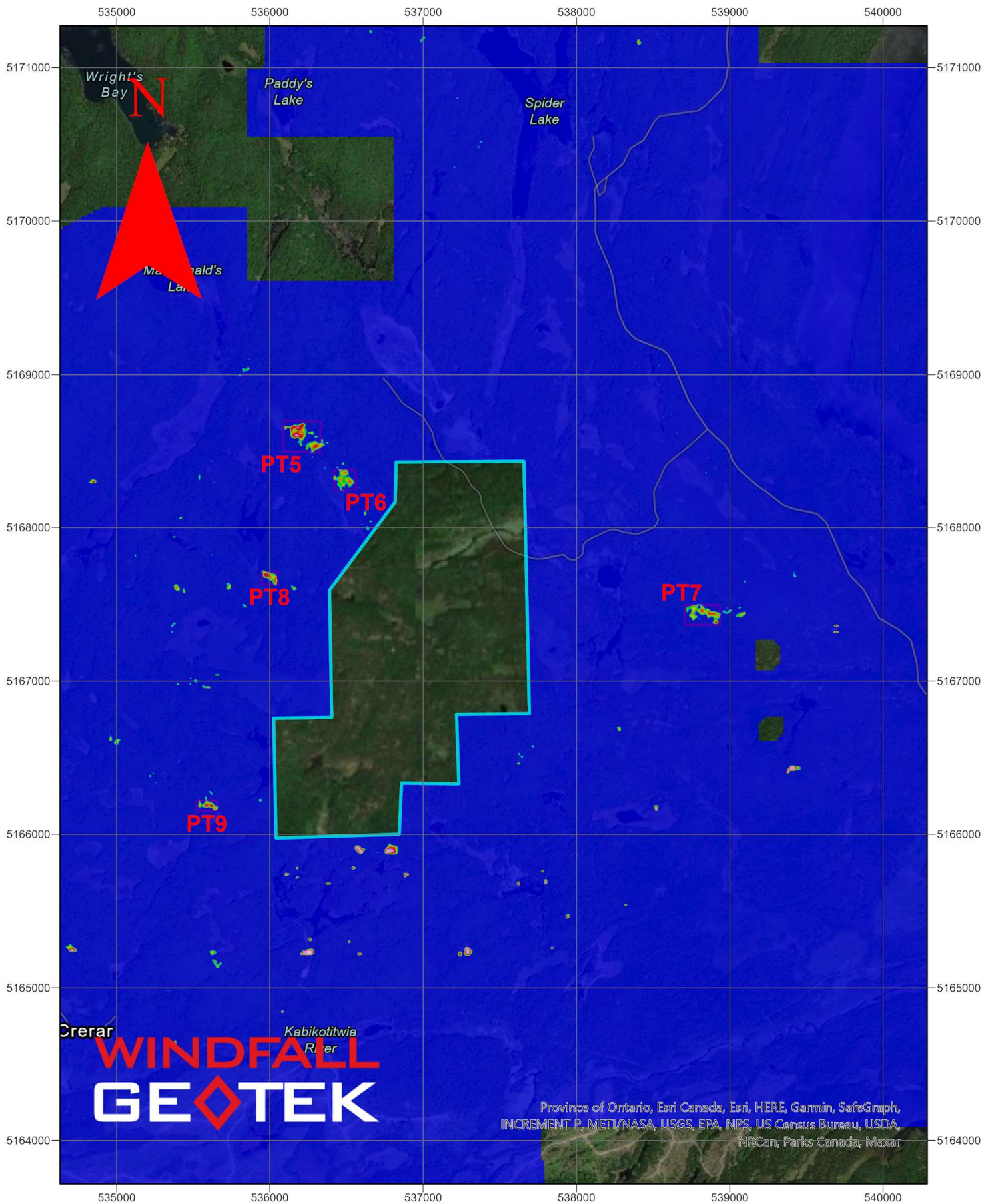


Figure 3: Primary Model - Eastern Portion of SPJ Project

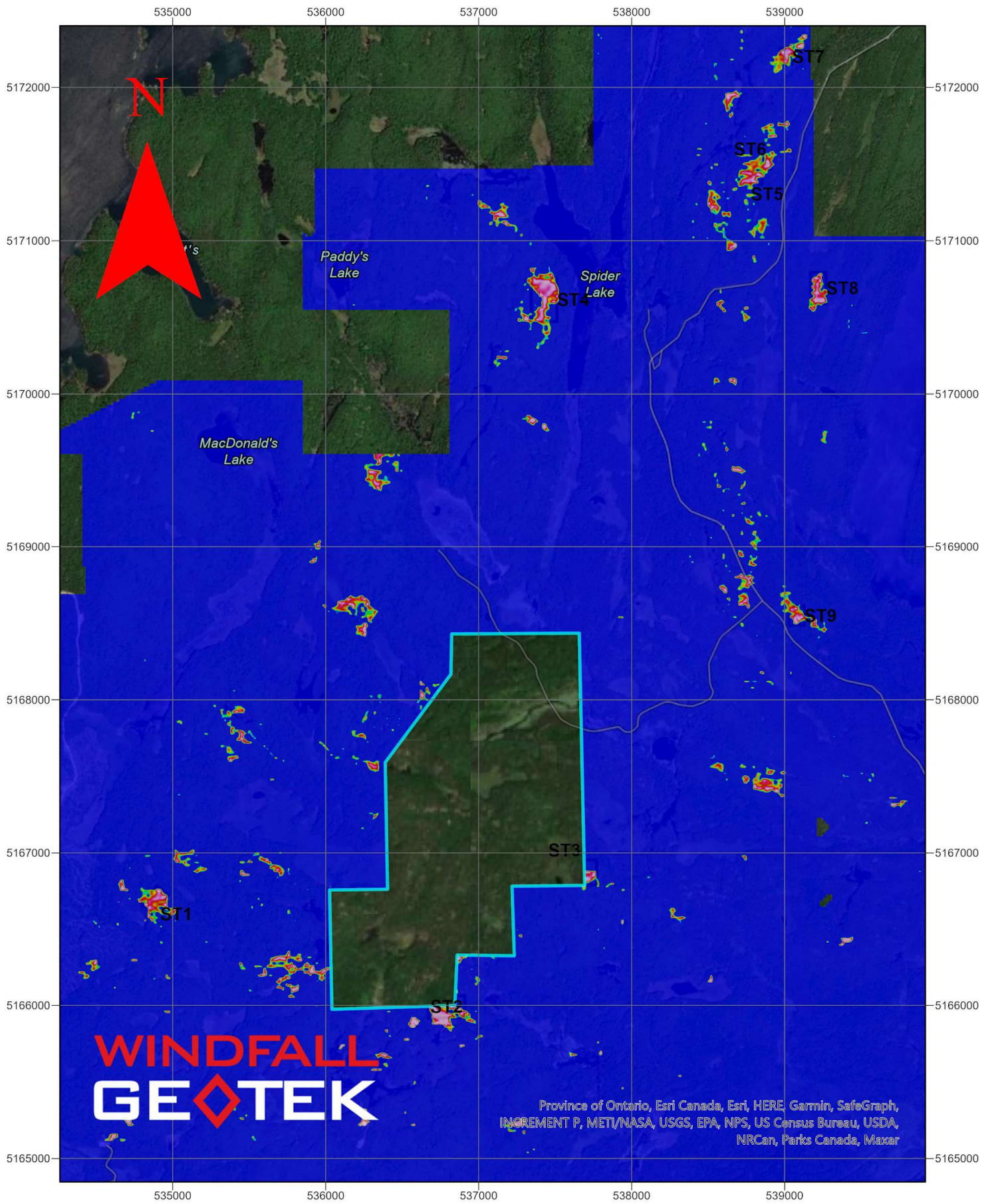


Figure 4: Secondary Model - Eastern Portion of SPJ Project

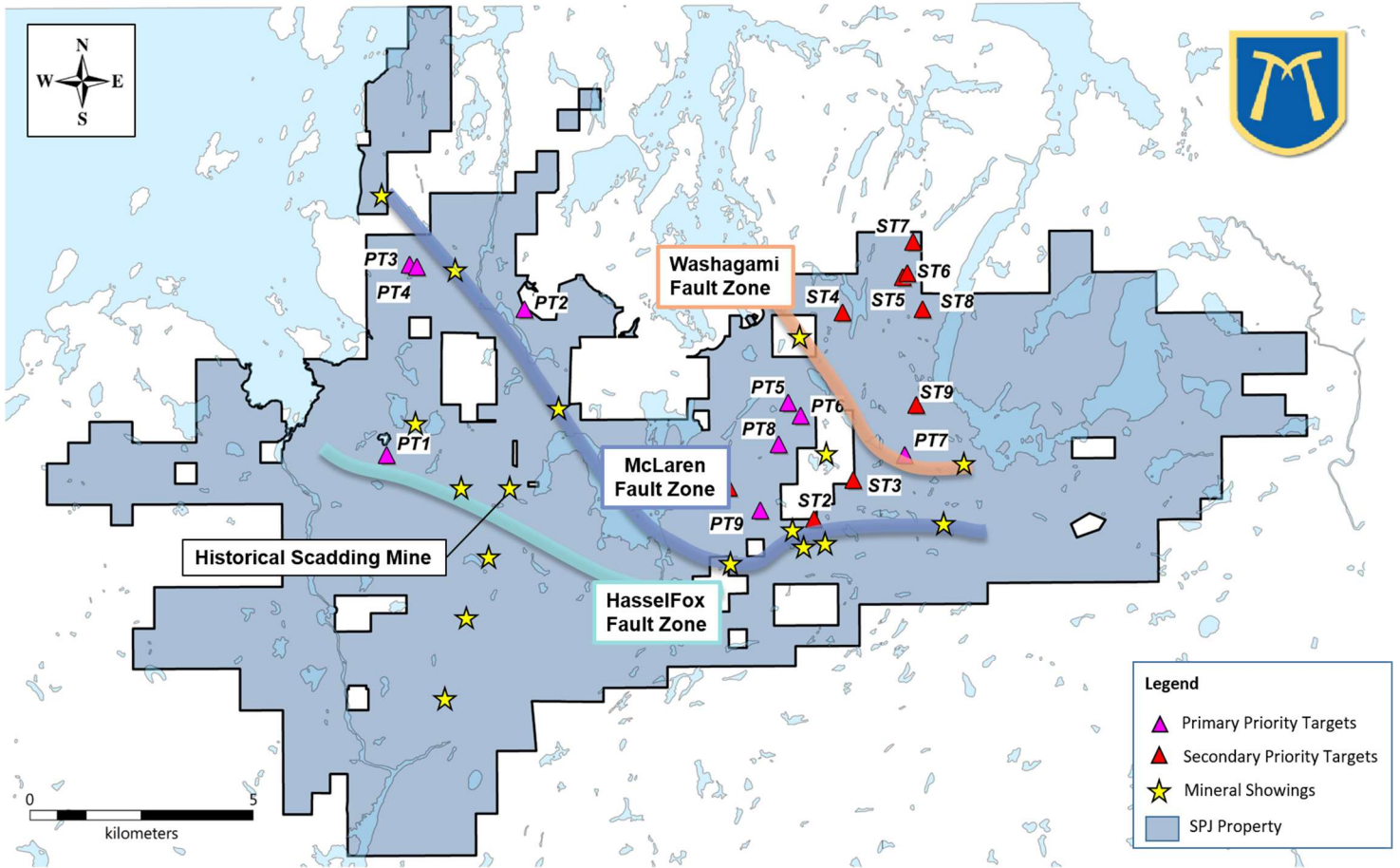


Figure 5: MacDonal Mines Property Wide Map of AI Targets produced by Windfall Geotek Inc.

The scientific and technical data contained in this press release was reviewed and prepared under the supervision of Grigor Heba, Ph.D., P.Geo., Principal Geologist and a Qualified Person as defined by National Instrument 43-101.

About Windfall Geotek – Powered by Artificial Intelligence (AI) since 2005

Windfall is an Artificial Intelligence company that has been in business for over 15 years developing its proprietary CARDS analysis (AI) and data mining techniques. Windfall Geotek can count on a multidisciplinary team that includes professionals in geophysics, geology, Artificial Intelligence, and mathematics. It combines available public and private datasets including geophysical, drill hole and surface data. The algorithms designed and employed by Windfall are calculated to highlight areas of interest that have the potential to be geologically similar to other gold deposits and mineralization. The Company's objective is to develop a new royalty stream by significantly enhancing and participating in the exploration success rate of mining and to continue the Land Mine detection application as a high priority. Windfall has played a part in numerous past discoveries utilizing its methodology as described at: <https://windfallgeotek.com/>.

For further information, please contact:for

President and CTO of Windfall Geotek

Email: simran@windfallgeotek.com

Website:

Phone: 1-855-946-5145

www.windfallgeotek.com

Additional information about the Company is available under Windfall Geotek's profile on SEDAR at www.sedar.com. Neither the TSX Venture Exchange nor does its Regulation Services Provider (as that term is defined in the policies of the TSX Venture Exchange) accept responsibility for the adequacy or accuracy of this release.

FORWARD-LOOKING STATEMENTS: *This news release contains forward-looking statements, which relate to future events or future performance and reflect management's current expectations and assumptions. Such forward-looking statements reflect management's current beliefs and are based on assumptions made by and using information currently available to the Company. Investors are cautioned that these forward-looking statements are neither promises nor guarantees, and they are subject to risks and uncertainties that may cause future results to differ materially from those expected. These forward-looking statements are made as of the date hereof and, except as required under applicable securities legislation, the Company does not assume any obligation to update or revise them to reflect new events or circumstances. All forward-looking statements made in this press release are qualified by these cautionary statements and by those made in our filings with SEDAR in Canada (available at WWW.SEDAR.COM).*