

Champion Electric Metals Reports First Lithium Drill Intersections from Its Property in James Bay, Quebec

Toronto, Ontario--(Newsfile Corp. - May 14, 2024) - Champion Electric Metals Inc. (CSE: LTHM) (OTCQB: CHELF) (FSE: 1QB0) ("**Champion Electric**" or the "**Company**") is pleased to report that it has intersected lithium in its [maiden exploration drill program](#) on the Western Prospect at the Lithium Property in James Bay, Quebec (the "Property").

Drill hole EIQ24-007 intersected **10.0 metres (m) at 0.42% Li₂O**, including **3.0 m at 0.62% Li₂O, 2.0 m at 0.50% Li₂O and 2.0 m at 0.54% Li₂O**. Drill hole EIQ24-008 intersected **1.85 m at 0.56% Li₂O** (see Figure 1, Tables 1 and 2). These drill intersections are from the Western Prospect on a high-priority pegmatite target directly up-ice from the [previously reported spodumene grains in till discovery](#).

Jonathan Buick, President and CEO, commented: *"Discovering a lithium bearing pegmatite in our maiden drill program is a fantastic achievement. We believe we have intersected the edge of a mineralised system which may extend to the NE for some distance. Our upcoming field program will pick up immediately to the NE of the mineralised pegmatite, as the spring thaw prevented drill access in this direction. We are still in the early stages of exploration on our vast property, but we have now established a successful exploration workflow that we intend to apply over the whole property."*

The lithium bearing intervals were also anomalous in the pathfinder elements tantalum (Ta), cesium (Cs), niobium (Nb), and rubidium (Rb) (Table 1).

The spodumene crystals vary from light to medium green in colour and are up to 7 centimetres in length. Other associated minerals include quartz, albite, muscovite, white feldspar, orange feldspar and, less frequently, garnet.

The drill holes intersected a combination of mafic volcanic rocks, magnetite-rich iron formation and tonalite. The preliminary interpretation is that the pegmatite dyke intersected is near flat lying and subcrops beneath the glacial till at a vertical depth of approximately 5 metres (Figure 2). There is potential to extend these drill intersections to the northeast where outcropping pegmatites with anomalous Cs and K/Rb occur. The Company's technical team has used mapping, sampling, and geophysics to identify two parallel corridors of pegmatite stretching for more than 5 kilometres (Figure 3). There are numerous outcrops and till samples demonstrating that the pegmatites along the corridor are fractionated with chemistry favorable for more lithium mineralisation. As exploration moves along these corridors, the team will be looking for indications of multiple parallel or stacked dykes of mineralised pegmatite and/or down dip continuation from this initial shallow discovery.

Hole_ID	From	To	Metres	Li_ppm	Li2O%	Ta_ppm	Cs_ppm	Nb_ppm	K_%	Mn_ppm	Rb_ppm
EIQ24-007	12	22	10	1962	0.42%	69	349	79	1.95	782	1955
including	12	15	3	2900	0.62%	58	271	85	1.7	1589	1691
including	16	18	2	2310	0.50%	138	651	91	2.55	485	2995
including	20	22	2	2500	0.54%	54	302	89	2.25	572	1905
EIQ24-008	16.15	18	1.85	2601	0.56%	25	177	39	1.68	572	1506

Table 1: 2024 Drill Intersections

To view an enhanced version of this graphic, please visit:

https://images.newsfilecorp.com/files/8681/208980_champion_table1.jpg

Hole	UTM_East_NAD83_Z18	UTM_North_NAD83_Z18	UTM_Elevation	Azimuth	Dip	EOH (m)
EIQ24-001	521189.4	5933364.4	261.3	190	-50	278.88
EIQ24-002	521249.2	5933277.3	264.4	300	-50	216.04
EIQ24-003	521250.7	5933274.7	265.2	155	-50	273.6
EIQ24-004	521340.6	5933160.4	262.3	155	-50	371.97
EIQ24-005	521380.4	5933451.3	257	150	-50	246.22
EIQ24-006	521443.2	5933367.1	259	150	-50	233.91
EIQ24-007	521607.6	5933448.4	257.9	150	-50	120
EIQ24-008	521611.4	5933404.4	259.5	330	-50	123
EIQ24-009	521539.4	5933444.1	261.5	150	-50	195.08
EIQ24-010	520623.8	5933342.9	263.2	180	-50	204.26
Total						2262.96

Table 2: Drill Hole Locations

To view an enhanced version of this graphic, please visit:

https://images.newsfilecorp.com/files/8681/208980_champion_table2.jpg

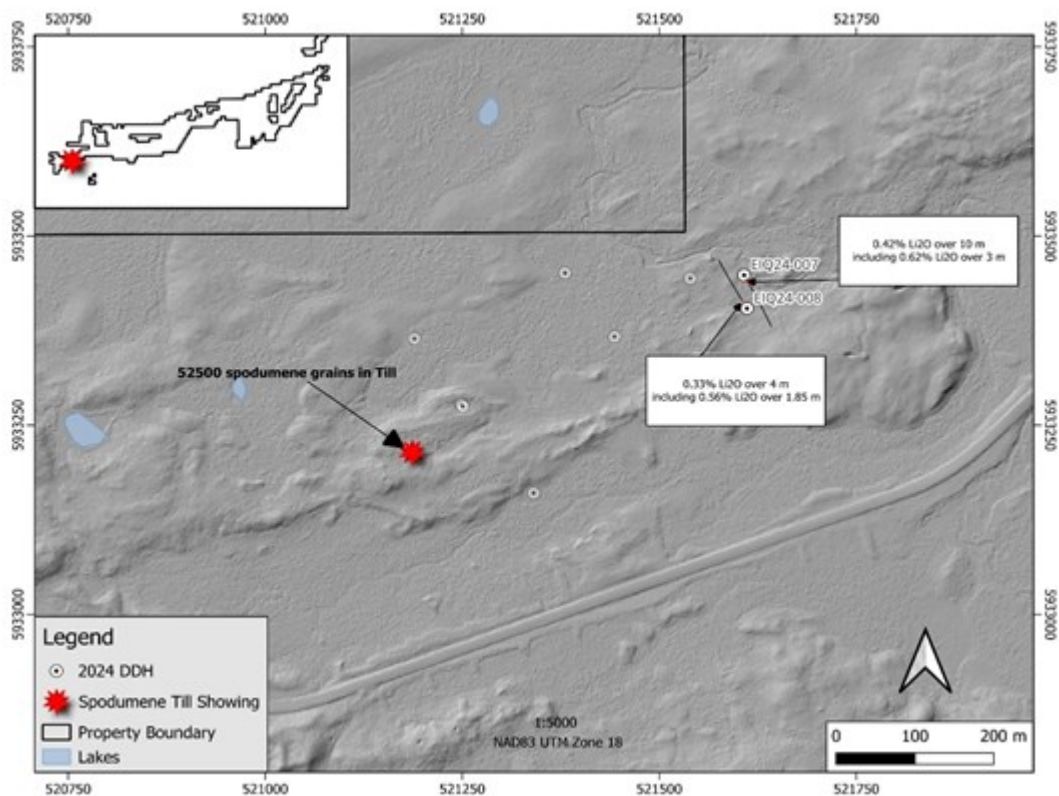


Figure 1: Location map of the 2024 drill holes (EIQ24-007/008 highlighted)

To view an enhanced version of this graphic, please visit:

https://images.newsfilecorp.com/files/8681/208980_768497f744838aed_003full.jpg

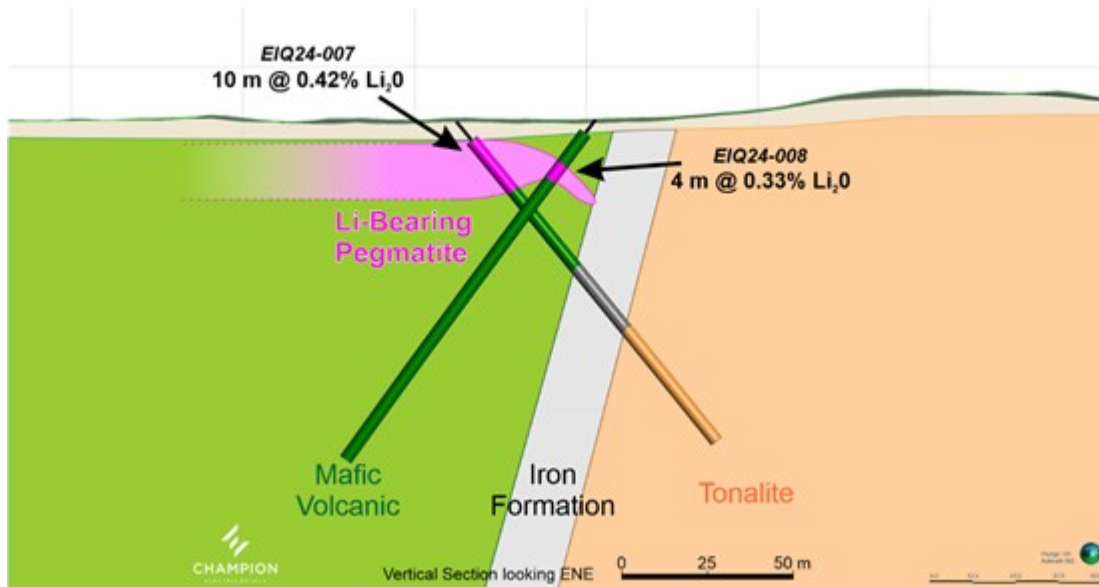


Figure 2: Cross section of EIQ24-007 and EIQ24-008

To view an enhanced version of this graphic, please visit:

https://images.newsfilecorp.com/files/8681/208980_768497f744838aed_004full.jpg

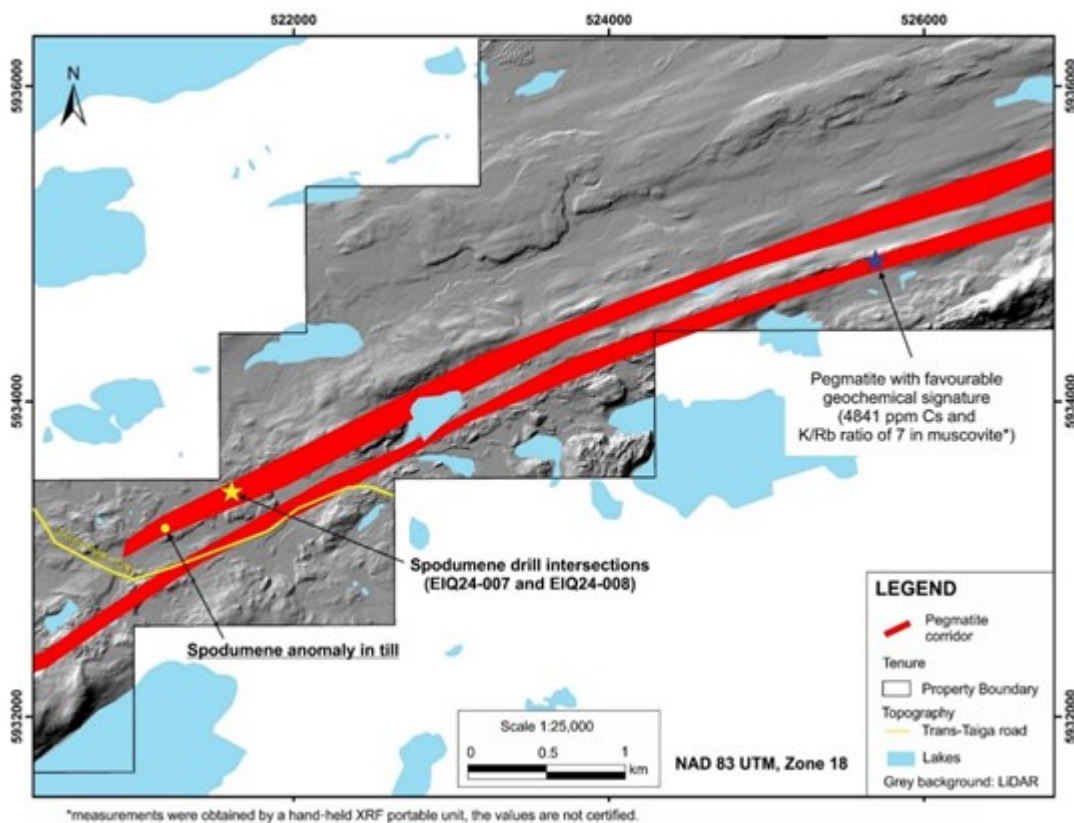


Figure 3: Exploration potential along strike

To view an enhanced version of this graphic, please visit:

https://images.newsfilecorp.com/files/8681/208980_768497f744838aed_005full.jpg

About the Project

The Champion Electric Lithium Property is close to the Trans-Taiga Road and covers the northern extension of the Lac Guyer Greenstone Belt, which hosts neighbouring Patriot Battery Metals' Corvette and [Winsome Resources' Cancet advanced project](#)s in the prolific James Bay region of Quebec (Figure

4).

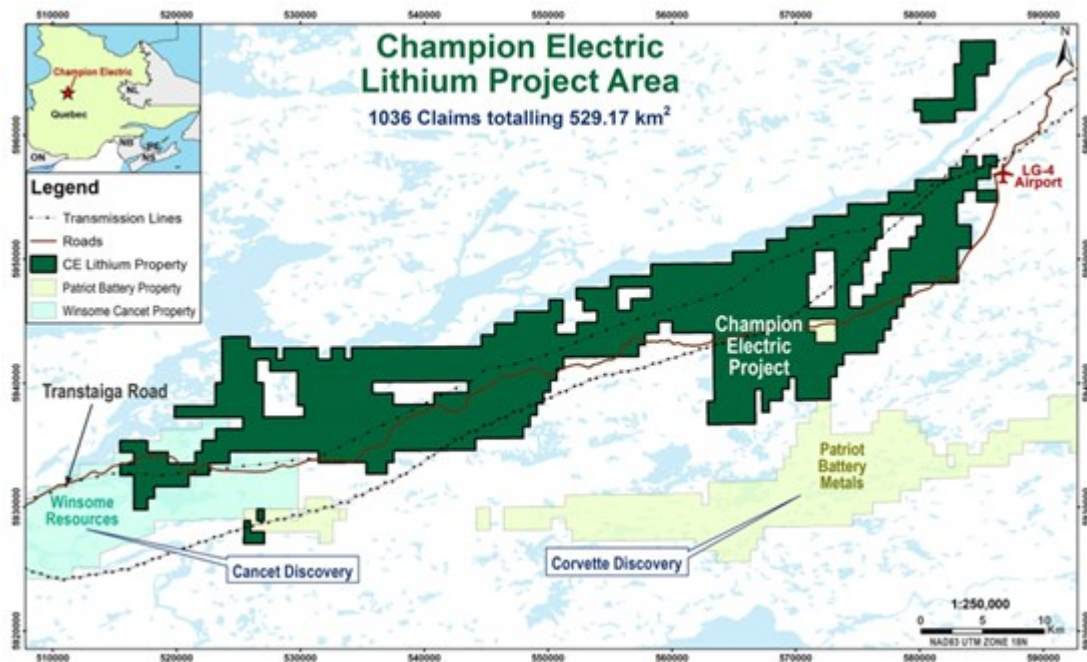


Figure 4: Champion Electric Lithium Project location map

To view an enhanced version of this graphic, please visit:

https://images.newsfilecorp.com/files/8681/208980_768497f744838aed_006full.jpg

QA/QC

The NQ drill core was transported by truck from the drill site to the core logging facility at the Mirage camp by the drilling company Forage Vortex. All drill core was logged, photographed and the pegmatite intervals tagged for sampling. The core samples were cut in half with a diamond core saw at 1.0 m intervals to ensure representativity. Each sample interval consists of one half of the cut NQ drill core. Blanks and certified reference materials for lithium were inserted every 25 samples. Each sample was bagged with a numbered tag and groups of samples were placed in larger rice bags and sealed to maintain a chain of custody. All sample preparation and analytical work was performed by Activation Laboratories in Val D'or, Québec. All results passed the QA/QC screening at the lab and all the inserted standards and blanks returned results that were within acceptable limits.

Qualified Person

Dr. Eric Hebert, P.Geo., Senior Geological consultant, is a member (#0842) of the Ordre des Géologues du Québec (OGQ) and a qualified person within the meaning of National Instrument 43-101 and has reviewed and approved the technical information contained in this press release. All aspects of the drilling program were supervised by the Qualified Person.

About Champion Electric Metals Inc.

Champion Electric is a discovery-focused exploration company that is committed to advancing its highly prospective lithium properties in Quebec, Canada and cobalt properties in Idaho, United States. In addition, the Company owns the Baner gold project in Idaho County and the Champagne polymetallic project in Butte County near Arco.

The Company's shares trade on the CSE under the trading symbol "LTHM", on the OTCQB under the trading symbol "CHELF", and on the Frankfurt Stock Exchange under the symbol "1QB0". Champion Electric strives to be a responsible environmental steward, stakeholder, and contributing citizen to the local communities where it operates, taking its social license seriously, employing local community

members and service providers at its operations whenever possible.

ON BEHALF OF THE BOARD OF CHAMPION ELECTRIC

"Jonathan Buick"

Jonathan Buick, President, and CEO

To learn more, please visit the Company's SEDAR profile at www.sedarplus.ca or the Company's corporate website at www.champem.com.

For further information, please contact:

Investor Relations and Communications

Phone: (647) 249-9298

Email: iryna@grovecorp.ca

THIS PRESS RELEASE DOES NOT CONSTITUTE AN OFFER TO SELL OR THE SOLICITATION OF AN OFFER TO BUY ANY SECURITIES IN ANY JURISDICTION, NOR SHALL THERE BE ANY OFFER, SALE, OR SOLICITATION OF SECURITIES IN ANY STATE IN THE UNITED STATES IN WHICH SUCH OFFER, SALE, OR SOLICITATION WOULD BE UNLAWFUL.

Cautionary Statements

Neither the Canadian Securities Exchange nor its regulation services provider has reviewed or accepted responsibility for the adequacy or accuracy of this press release. This press release may include forward-looking information within the meaning of Canadian securities legislation, concerning the business of the Company. Forward-looking information is based on certain key expectations and assumptions made by management of the Company, including closing of the Transactions and the prospectivity of the Projects for lithium. Although the Company believes that the expectations and assumptions on which such forward-looking information is based on are reasonable, undue reliance should not be placed on the forward-looking information because the Company can give no assurance that they will prove to be correct. Forward-looking statements contained in this press release are made as of the date of this press release. The Company disclaims any intent or obligation to update publicly any forward-looking information, whether as a result of new information, future events or results or otherwise, other than as required by applicable securities laws.

The Projects are at an early stage of exploration, and the Company cautions that the qualified persons who have reviewed and approved this news release have not verified scientific or technical information produced by third parties.



CHAMPION

ELECTRIC METALS

To view the source version of this press release, please visit

<https://www.newsfilecorp.com/release/208980>