



GREAT THUNDER

GOLD CORP.

FORM 51-102F3

MATERIAL CHANGE REPORT

Item 1: Name and Address of Company

Great Thunder Gold Corp. (the “Company” or “Great Thunder”)
Suite 830, 1100 Melville Street
Vancouver, BC, V6E 4A6

Item 2: Date of Material Change

June 3, 2021

Item 3: News Release

A news release was issued June 3, 2021 and was disseminated by Newsfile.

Item 4: Summary of Material Change

Great Thunder Gold Corp. has entered into an option agreement to acquire 197 claims totaling 4,925 hectares located 45 kilometres northeast of Gander, NL.

Item 5: Full Description of Material Change

Great Thunder Gold Corp. has entered into an option agreement to acquire 197 claims totaling 4,925 hectares located 45 kilometres northeast of Gander, NL (Figure 1). The GRUB and Bursey’s Properties (the “Property”) lie along the GRUB line, a crustal scale structural corridor believed to be one of the major fluid conduits related to the Gander Gold belt and New Found Gold’s “Keats Zone” hosting bonanza high-grade gold mineralization.

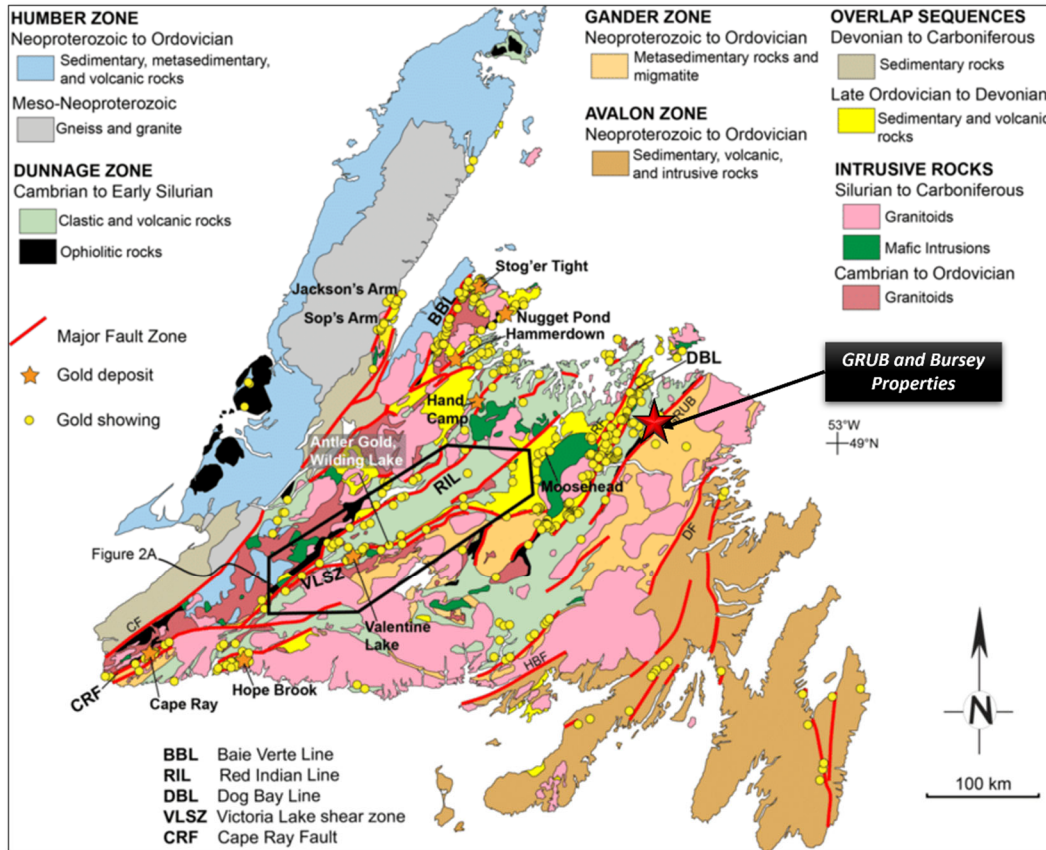


Figure 1: Regional location of the GRUB and Bursej properties

Under the terms of the option agreement, Great Thunder can acquire a 100% interest in the GRUB and Bursej's claim groups from the optionors by paying \$15,000 and issuing 592,000 shares immediately and incurring \$300,000 of exploration expenditures within two years. Access is deemed excellent through a network of logging roads.

GRUB and Bursej's Claim Group

The Property lies along the GRUB Fault, a crustal scale fault zone that divides the Gander Zone from the Exploits Subzone and extends over 200 km in a southwest trend (Figure 2). The GRUB structural corridor and related splay faulting hosts the Appleton Fault and JBP Fault home to the Queensway Gold Project of New Found Gold that reportedly contains 2 gold discoveries, the Keats and Lotto Zones, and an additional 10 high grade gold showings.

The GRUB and Bursej's Properties are located over and adjacent to a carbonatized ultramafic unit with quartz-carbonate veining known as the Gander River Ultramafic Belt. The spatial relationship of gold mineralization to faults zones with carbonatized ultramafic rocks suggests a comparison to the Mother Lode Belt in California, a general deposit model where the carbonatization of ultramafic rocks and the development of gold veins in and above thrusts, reverse and normal faults has been

used as a guide for exploration in these areas. Since the initial phase of exploration in the 1980's no further work has been completed on the claim groups.

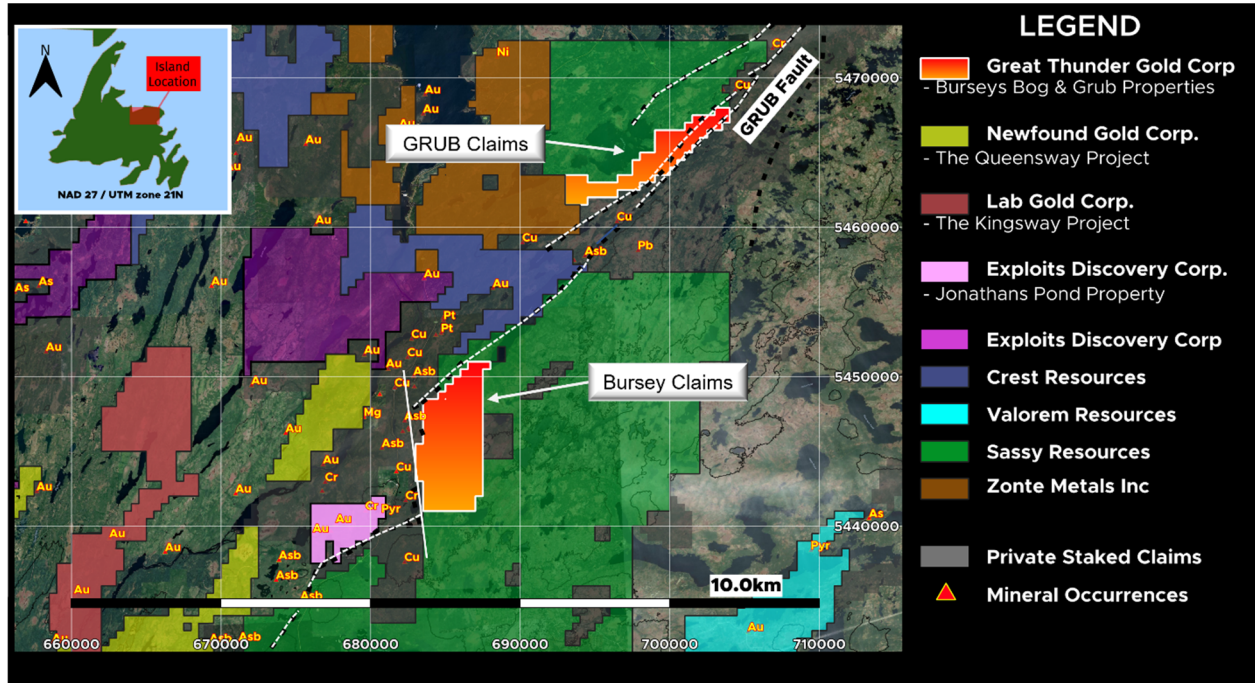


Figure 2: GRUB and Bursley claim group along the GRUB Fault line

Commentary from the CEO

Blair Naughty, CEO of Great Thunder states: “As CEO of GTG it is my duty to our shareholders to get our company positioned into prolific areas with a high opportunity to discover new deposits. We are extremely pleased to bring Great Thunder to Newfoundland. Newfoundland has recently become one of the most exciting mining districts globally thanks a lot to, whom many call the world’s greatest gold prospector, Shawn Ryan, and Newfoundland’s legendary multi-generational Keats family. These claims we are acquiring are strategically located along the GRUB Fault structural corridor northeast of New Found Gold’s aggressive 200,000 metre drilling campaign. We are very aware of how geological structure plays a prominent role in gold discoveries in Newfoundland which especially excites us about these claims. While we await the drill results from our two campaigns in Quebec, we are looking forward to commence our initial field work in Newfoundland on this well-situated project.”

Qualified Person

Mr. Mike Kilbourne, P. Geo, an independent qualified person as defined in National Instrument 43-101, has reviewed, and approved the technical contents herein on behalf of the Company.

The QP has not completed sufficient work to verify the historic information on the Bursley’s and GRUB properties particularly regarding historical exploration, neighbouring companies, and

government geological work. The information provides an indication of the exploration potential of the Property but may not be representative of expected results.

Item 6: Reliance on Subsection 7.1(2) or (3) of National Instrument 51-102

Not applicable

Item 7: Omitted Information

Not applicable

Item 8: Executive Officer

Blair Naughty, President and Chief Executive Officer
Telephone (604) 346-7613

DATED AT Victoria, British Columbia this 3rd day of June, 2021.

GREAT THUNDER GOLD CORP.

Signed "*Glen Wallace*"

per Glen Wallace, CFO